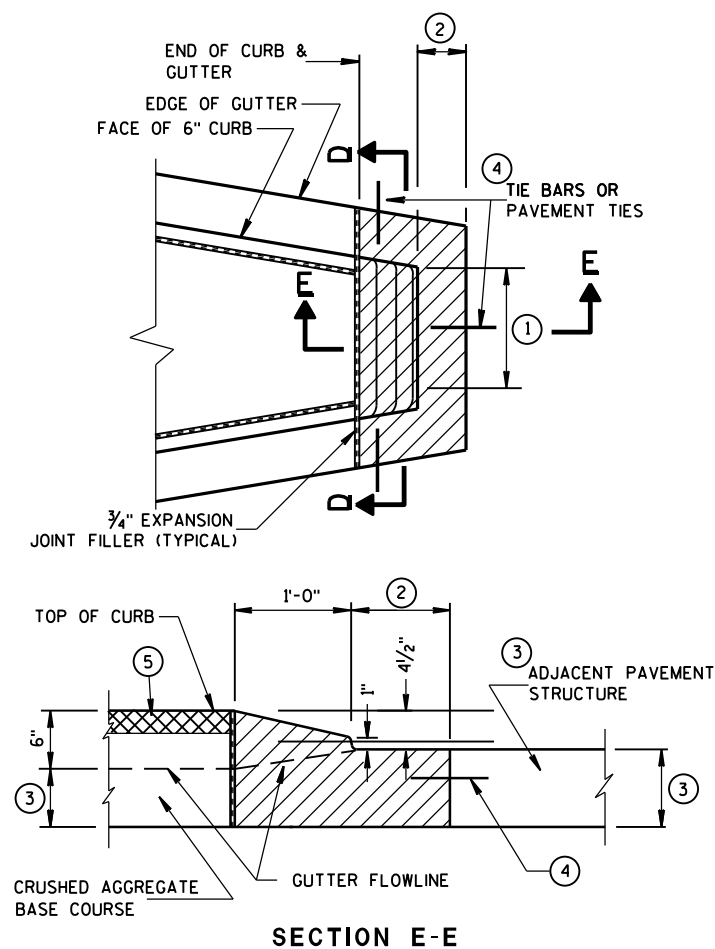


CONCRETE MEDIAN BLUNT NOSE DETAIL

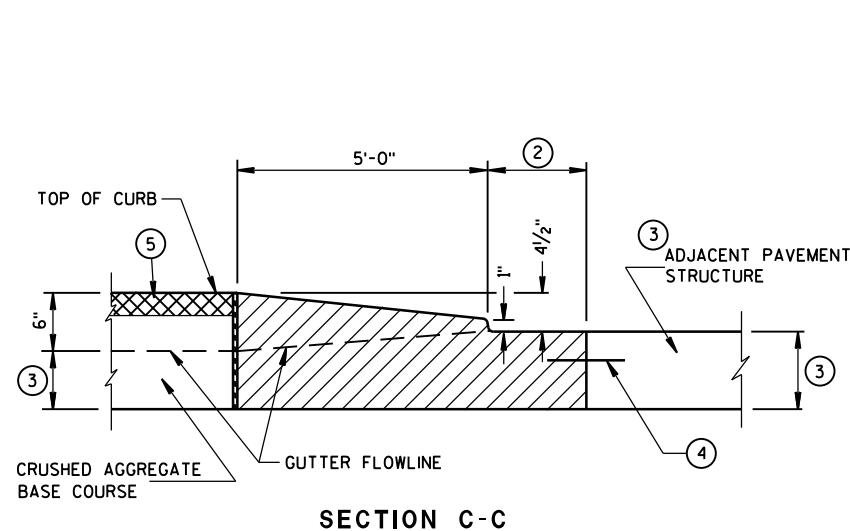
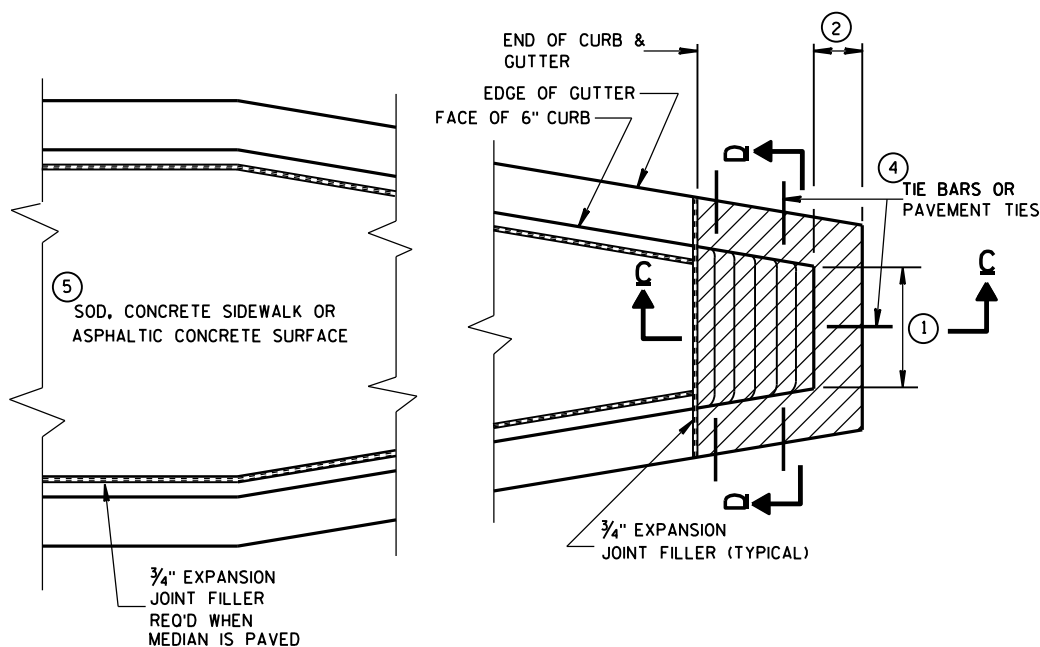
GENERAL NOTES

DETAILS OF CONSTRUCTION, MATERIALS AND WORKMANSHIP NOT SHOWN ON THIS DRAWING SHALL CONFORM TO THE PERTINENT REQUIREMENTS OF THE STANDARD SPECIFICATIONS AND THE APPLICABLE SPECIAL PROVISIONS.

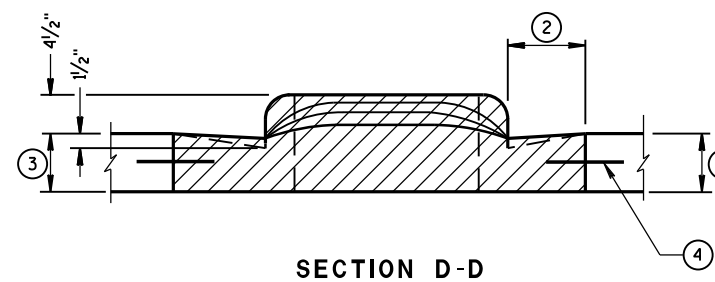
- ① SEE PLAN FOR MEDIAN NOSE WIDTH AND RADIUS (FOR ROUND NOSE ALTERNATE).
- ② WIDTH OF GUTTER TO MATCH EXISTING ADJACENT GUTTER OR AS SPECIFIED ELSEWHERE IN THE PLAN.
- ③ DEPTH EQUAL TO ADJACENT PAVEMENT. ADJACENT PAVEMENT STRUCTURE DETAILS ARE SHOWN ON THE PLAN. TYPICAL OPTIONS ARE:
 - (1) NEW OR EXISTING CONCRETE PAVEMENT.
 - (2) ASPHALTIC CONCRETE PAVEMENT OVER NEW OR EXISTING CONCRETE BASE COURSE.
 - (3) ASPHALTIC CONCRETE PAVEMENT OVER CRUSHED AGGREGATE BASE COURSE.
- ④ TIE BARS OR PAVEMENT TIES REQUIRED IN NEW CONCRETE PAVEMENT OR CONCRETE BASE COURSE. TIE BARS SHALL BE NO. 4 X 2'-0" SPACED AT 2'-0" C-C.
- PAVEMENT TIES REQUIRED IN EXISTING CONCRETE BASE COURSE. PAVEMENT TIES SHALL BE NO. 6 X 1'-0" SPACED AT 3'-0" C-C INSTALLED ON A HORIZONTAL SKEW OF 6:1. THE DIRECTION OF SKEW SHALL ALTERNATE AFTER EVERY ONE OR TWO BARS.
- ⑤ SURFACE TYPE AND DETAILS ARE SHOWN ELSEWHERE IN THE PLAN.



CONCRETE MEDIAN SLOPED NOSE TYPE 2



CONCRETE MEDIAN SLOPED NOSE TYPE 1



CONCRETE MEDIAN NOSE	
STATE OF WISCONSIN DEPARTMENT OF TRANSPORTATION	
APPROVED 6-8-2006 DATE	/s/ Jerry H. Zogg ROADWAY STANDARDS DEVELOPMENT ENGINEER
FHWA	

6

6

S.D.D. 11 B 2-2

S.D.D. 11 B 2-2

Concrete Median Nose

References:

[FDM 11-20-1](#)

Bid items associated with this drawing:

<u>ITEM NUMBER</u>	<u>DESCRIPTION</u>	<u>UNIT</u>
305.0110 - 0135	Base Aggregate Dense (x-inch).....	TON or CY
415.0060 - 0199	Concrete Pavement (inch)	SY
415.1080 - 1199	Concrete Pavement HES (inch)	SY
460.1100 - 1700	HMA Pavement Type (xx)	TON
601.0300 - 0399	Concrete Curb & Gutter (inch)	LF
601.0400 - 0499	Concrete Curb & Gutter (inch)(type)	LF
620.0200	Concrete Median Blunt Nose	SF
620.0300	Concrete Median Sloped Nose	SF

Standardized Special Provisions associated with this drawing:

NONE

Other SDDs associated with this drawing:

[SDD 8D1](#) Concrete Curb, Concrete Curb & Gutter and Ties

Design Notes:

Use of this SDD requires that the following project specific information be shown elsewhere in the plan; gutter width median nose width or radius, and details about the surface type required for the median (See General Notes 1, 2, and 5).

Use the Type 1 (5 foot) median nose where the length does not interfere with a pedestrian crossing pavement marking and there is not a pedestrian activated push button in the median.

Use the Type 2 (1 foot) median nose where the shorter nose maintains straight pedestrian crossing pavement marking, or there is a pedestrian activated push button in the median.

A pedestrian activated push button in the median must be within 2 feet of the marked crosswalk and must be ADA accessible.

The blunt nose or sloped nose Type 2 is recommended for grade crossings.

Include the median nose type in the miscellaneous quantities.

Concrete median nose is measured and paid for by the square feet.

Contact Person:

Mark Zander (608) 267-7327