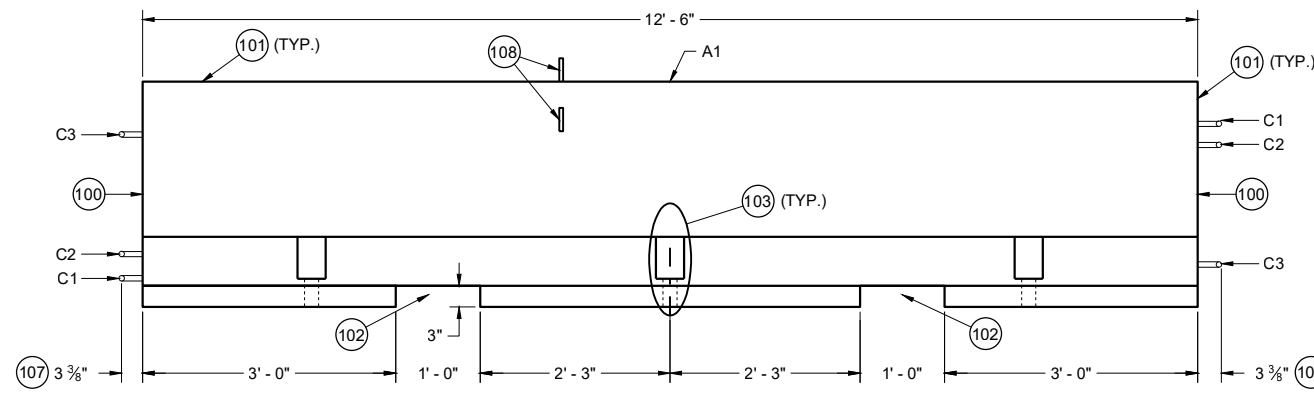
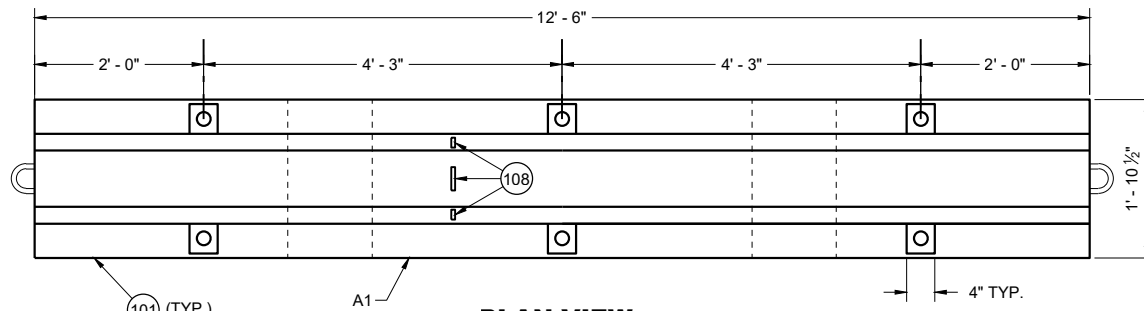


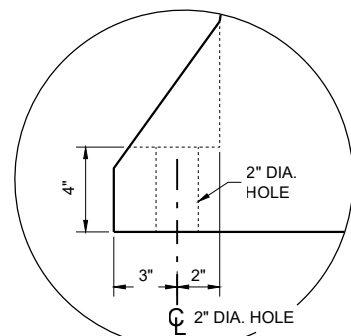
CROSS SECTION



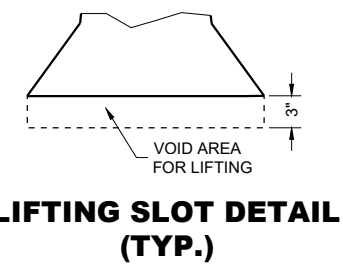
PROFILE VIEW



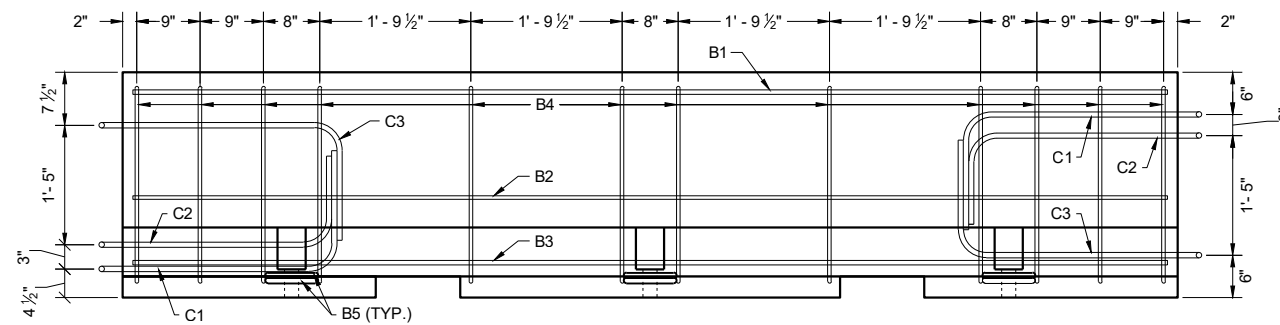
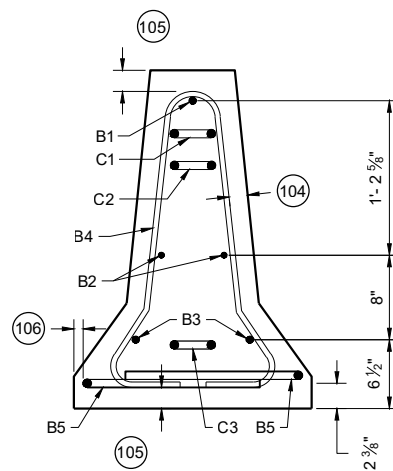
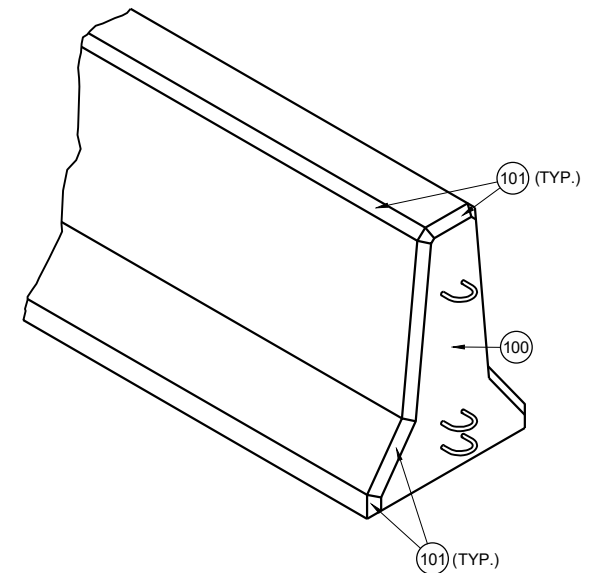
**PLAN VIEW
TEMPORARY BARRIER**



**ANCHOR BLOCK
DETAIL**



**LIFTING SLOT
DETAIL
(TYP.)**



**PROFILE VIEW
TEMPORARY BARRIER REINFORCEMENT**

GENERAL NOTES

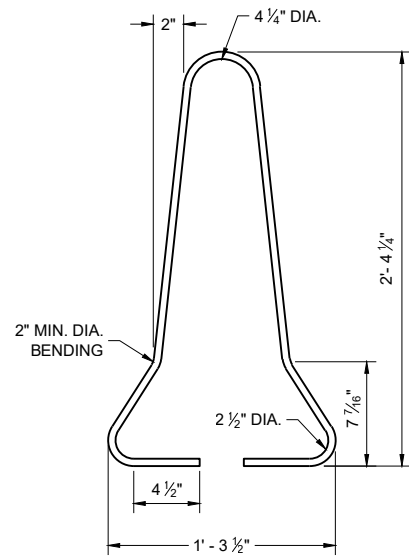
PLACE BARRIER ON PAVED SURFACE. BEFORE PLACEMENT OF TEMPORARY BARRIER, REMOVE ALL LOOSE MATERIAL FROM PAVED SURFACE.

LOOP BARS C1, C2 AND C3 ARE NOT FOR PLACEMENT OR MOVEMENT OF BARRIER.

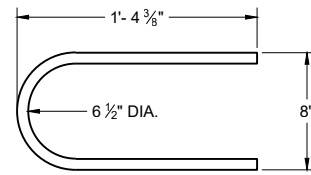
- 100 PERMANENTLY FORM INTO ONE END OF BARRIER THE FOLLOWING INFORMATION:
A. TYPE OF BARRIER: WI-CBTP
B. MANUFACTURER
C. DATE OF MANUFACTURE (MONTH AND YEAR)
- 101 1" OPTIONAL CHAMFER
- 102 SEE LIFTING SLOT DETAIL
- 103 SEE ANCHOR BLOCK DETAIL
- 104 1 3/4" MIN. CLEAR COVER
- 105 2" MIN. CLEAR COVER
- 106 1" MIN. CLEAR COVER
- 107 ± 1/8" MEASURED FROM FACE OF CONCRETE BARRIER TO OUTSIDE OF LOOP BAR (TYP.)
- 108 USE DELINEATORS CONFORMING TO SECTION 633 OF THE STANDARD SPECIFICATIONS. CONTRACTOR MY USE ALTERNATE SHAPES AND HOUSING. INSTALL DELINEATORS ACCORDING TO MANUFACTURERS INSTRUCTION. INSTALL YELLOW REFLECTORS WHEN BARRIER IS LOCATED LEFT OF TRAFFIC AND WHITE WHEN BARRIER IS LOCATED RIGHT OF TRAFFIC. SPACE DELINEATORS A MAXIMUM OF 25 FEET APART, PROVIDE TO MOUNTED DELINEATORS IN ADDITION TO SIDE MOUNTED DELINEATORS ON BARRIER INSTALLATIONS LOCATED ON A CURVED ALIGNMENT LONGER THAT 200 FEET AND ON BARRIERS USED TO SEPARATE OPPOSING TRAFFIC.

**CONCRETE BARRIER
TEMPORARY PRECAST,
12' - 6"**

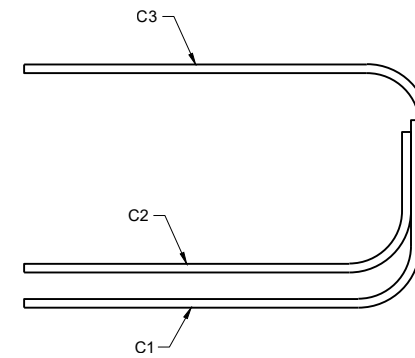
STATE OF WISCONSIN
DEPARTMENT OF TRANSPORTATION



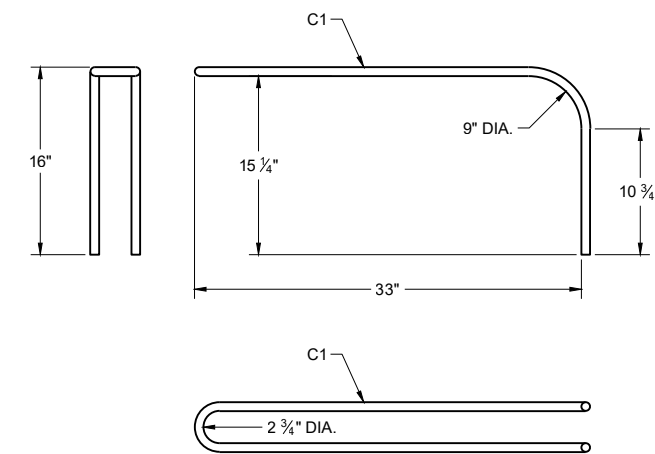
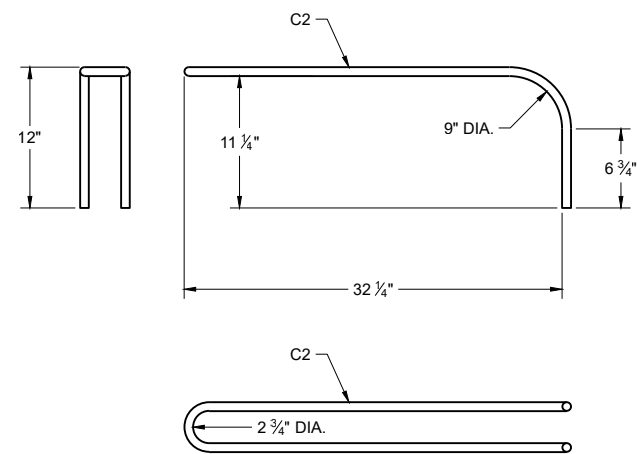
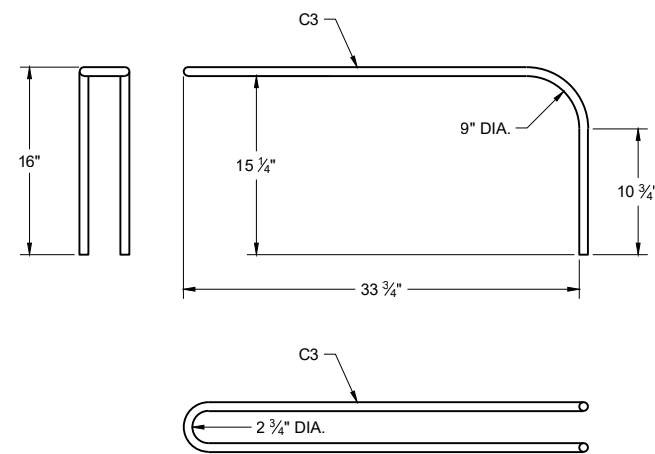
B4 BAR DETAIL



B5 BAR DETAIL



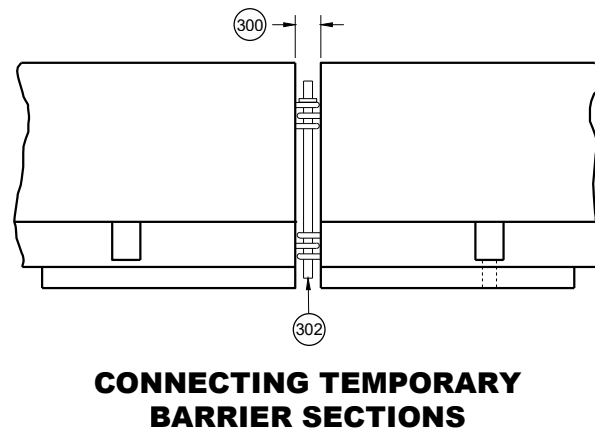
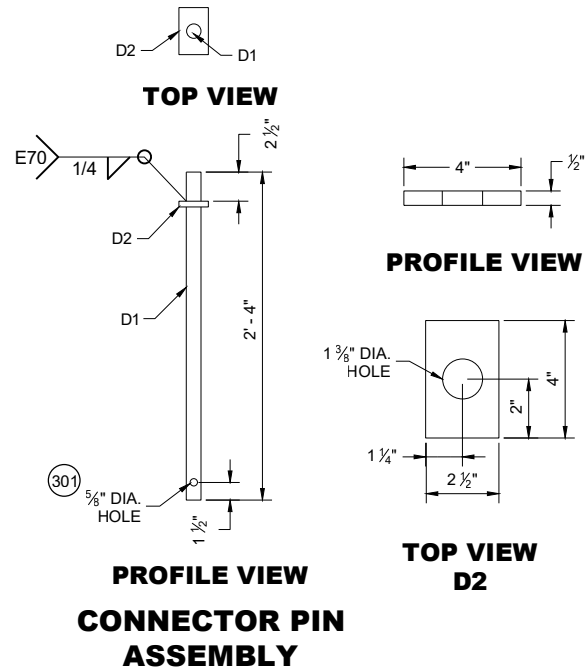
**PROFILE VIEW
LOOP BAR ASSEMBLY**



C BAR DETAILS

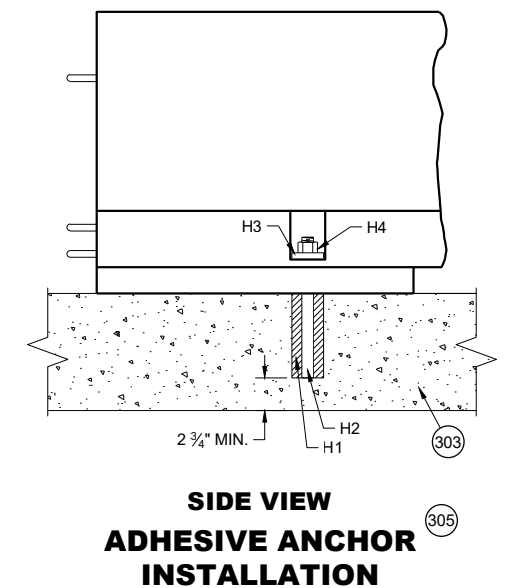
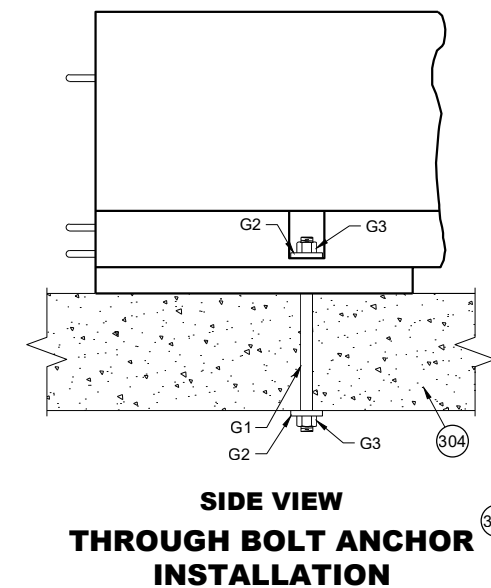
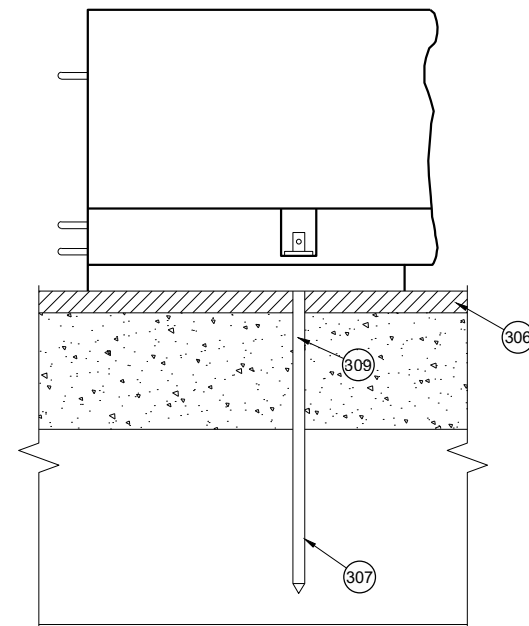
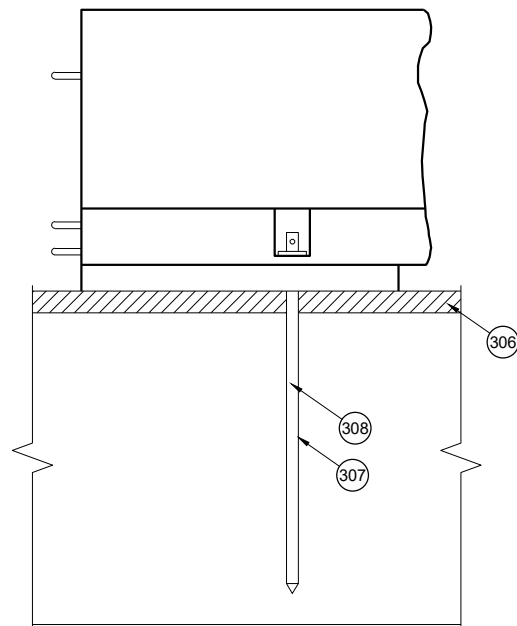
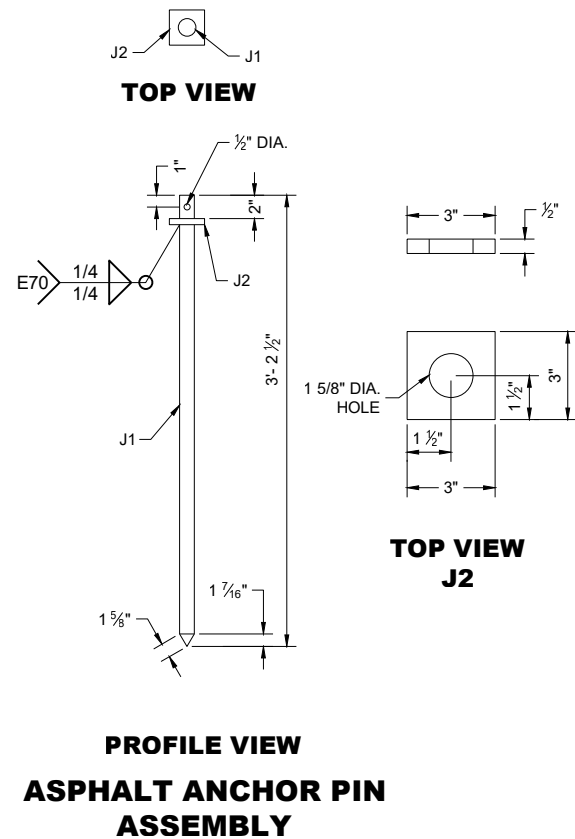
**CONCRETE BARRIER
TEMPORARY PRECAST,
12' - 6"**

STATE OF WISCONSIN
DEPARTMENT OF TRANSPORTATION



GENERAL NOTES

- (300) SET WITH 3 5/8" WOOD BLOCK.
- (301) HOLE IS OPTIONAL.
- (302) CONNECTOR PIN ASSEMBLY.
- (303) CONCRETE PAVEMENT, APPROACH SLAB, OR DECK.
- (304) CONCRETE DECK.
- (305) DO NOT USE ON CONCRETE BRIDGE DECK WITH ASPHALT OVERLAY OR CONCRETE PAVEMENT WITH ASPHALT OVERLAY.
- (306) MINIMUM OF 2" OF ASPHALT.
- (307) ASPHALT ANCHOR PIN ASSEMBLY
- (308) IF DRILLING A PILOT HOLE, THE MAX. DIA. OF THE HOLE IS 3/4"
- (309) WHEN THERE IS ASPHALT OVERLAYING CONCRETE PAVEMENT, A 1 5/8" DIA. PILOT HOLE CAN BE DRILLED INTO THE OVERLAY AND CONCRETE. IF NEEDED DRILL A 3/4" PILOT HOLE IN BASE COURSE.



6

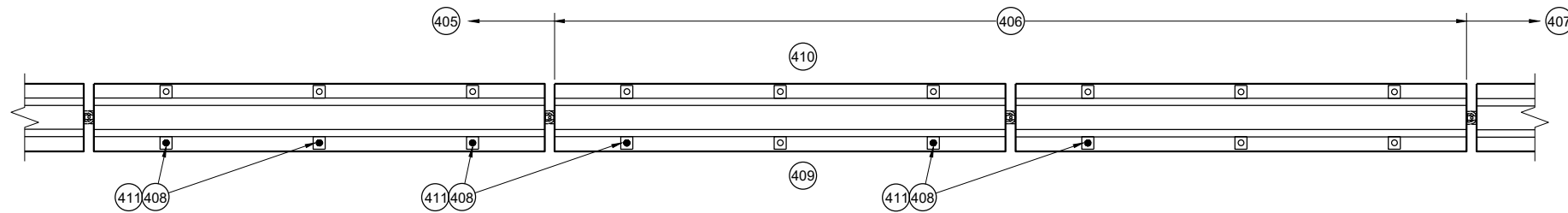
6

SDD 14B07-16C

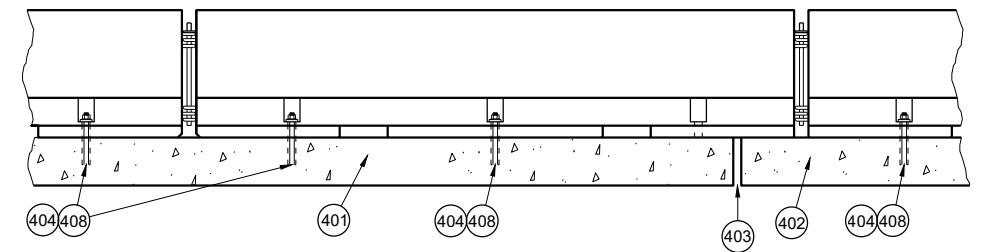
SDD 14B07-16C

**CONCRETE BARRIER
TEMPORARY PRECAST,
12' - 6"**

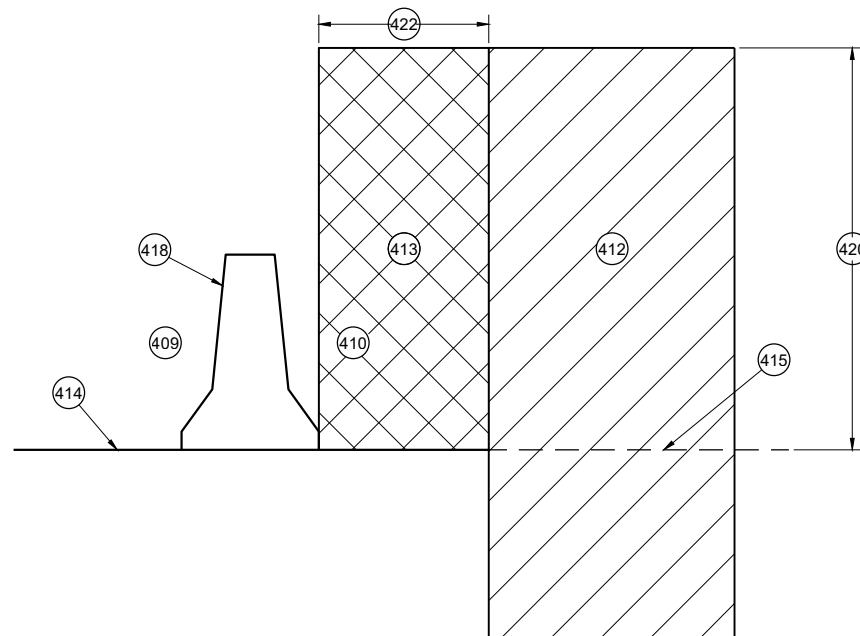
STATE OF WISCONSIN
DEPARTMENT OF TRANSPORTATION



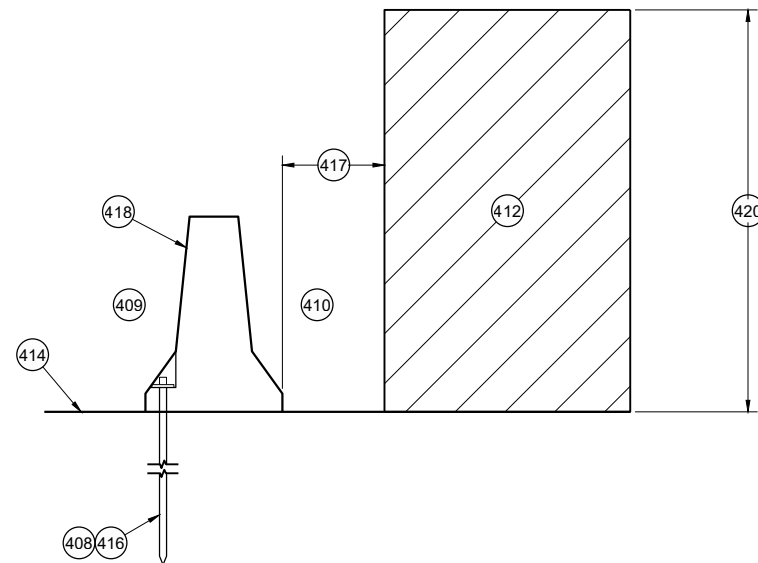
PLAN VIEW
TRANSITION FROM FREE STANDING TO ANCHORED BARRIER



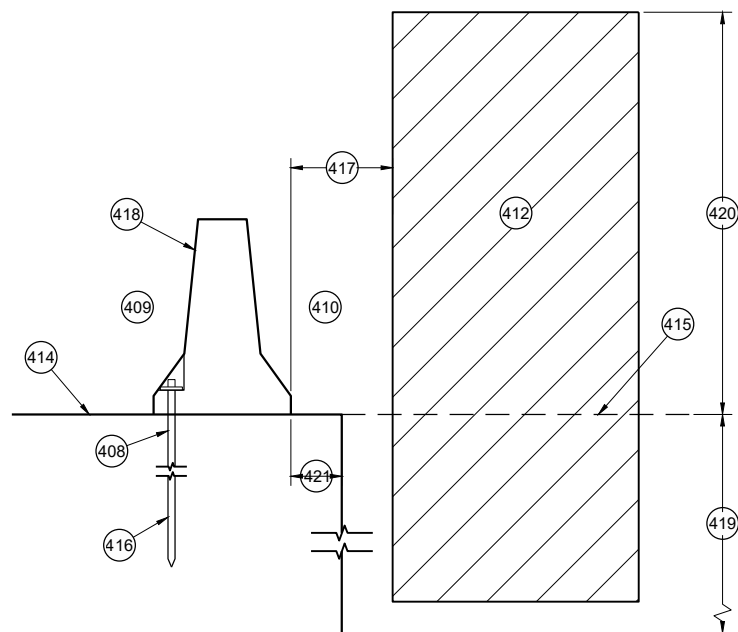
PROFILE VIEW
ANCHORED BARRIER NEAR EXPANSION JOINT



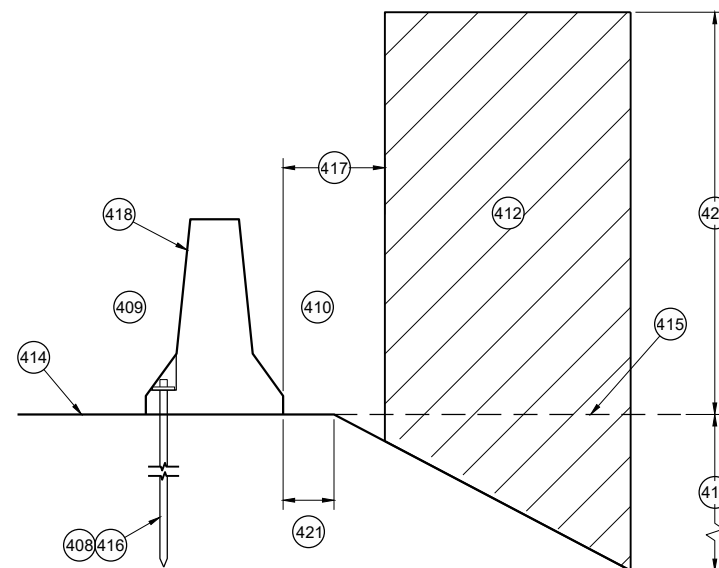
CROSS SECTION
FREE STANDING BARRIER



CROSS SECTION
ANCHORED BARRIER FOR OBJECTS ABOVE THE GRADE LINE AND NEAR THE BARRIER



CROSS SECTION
ANCHORED BARRIER NEAR VERTICAL DROP OFF



CROSS SECTION
ANCHORED BARRIER NEAR A SLOPE

GENERAL NOTES

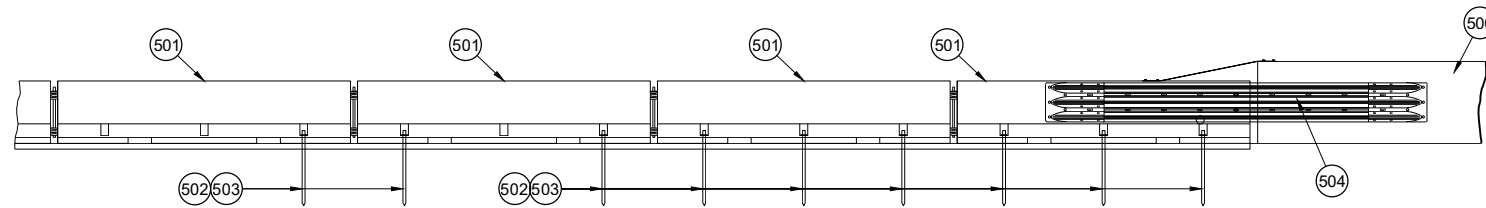
- 400 NO SINGLE CONCRETE BARRIER SECTION SHALL BE ANCHORED TO BOTH THE BRIDGE DECK AND THE APPROACH SLAB. ALL ANCHOR BOLT LOCATIONS SHALL BE ANCHORED TO THE DECK IN ACCORDANCE WITH THE DETAIL. NO MORE THAN ONE ANCHOR BOLT SHALL BE ELIMINATED FROM A BARRIER SECTION WHEN SPANNING AN EXPANSION JOINT.
- 401 CONCRETE DECK
- 402 CONCRETE DECK OR APPROACH SLAB.
- 403 EXPANSION JOINT
- 404 ADHESIVE ANCHOR SHOWN. SEE ANCHOR DETAILS.
- 405 ANCHORED TEMPORARY BARRIER
- 406 TRANSITION FROM ANCHORED TEMPORARY BARRIER TO FREE STANDING
- 407 FREE STANDING BARRIER
- 408 REMOVE ALL ANCHORS WHEN NO LONGER NEEDED. FILL CONCRETE PAVEMENTS, DECKS AND APPROACH SLABS WITH NON-SHRINK COMMERCIAL GROUT FROM THE APPROVED PRODUCT LIST. FILL ASPHALT PAVEMENTS WITH ASTM D6690 TYPE II RUBBERIZED CRACK FILLER.
- 409 TRAFFIC SIDE
- 410 NON-TRAFFIC SIDE
- 411 ANCHOR LOCATION. SEE ANCHORING DETAILS.
- 412 WORK AREA
- 413 AREA FREE OF OBJECTS AND WORKERS
- 414 GRADE LINE
- 415 EXTENDED GRADE LINE
- 416 ANCHORED TEMPORARY BARRIER. SEE BOLT THROUGH DECK, REMOVABLE ADHESIVE ANCHOR, OR AN ASPHALT ANCHOR ROD DETAILS FOR MORE INFORMATION. ASPHALT ANCHOR ROD SHOWN.
- 417 WHEN OBJECTS EXTEND ABOVE THE GRADE. A MINIMUM OF 1 FOOT IS REQUIRED FROM BACK OF BARRIER TO OBJECT.
- 418 OBJECTS ARE NOT TO BE PLACED ON, MOUNTED TO, OR ALLOWED TO LEAN AGAINST THE BARRIER WITHOUT WRITTEN PERMISSION OF THE PROJECT ENGINEER.
- 419 DEPTHS OF 3 FEET OR MORE.
- 420 Y = 6.5'
- 421 OFFSET FROM BACK OF BARRIER EDGE:
 CONCRETE PAVEMENT 0.5'
 ASPHALT 0.5'
- 422 POSTED SPEED (MPH):
 45 OR GREATER 4.0'
 40 OR LOWER 2.0'

CONCRETE BARRIER
TEMPORARY PRECAST,
12' - 6"

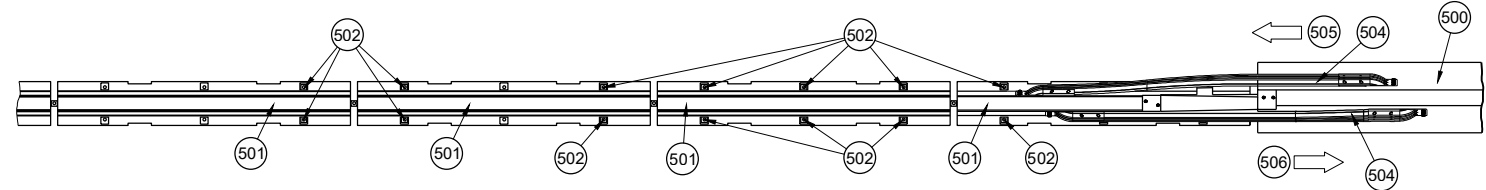
STATE OF WISCONSIN
 DEPARTMENT OF TRANSPORTATION

GENERAL NOTES

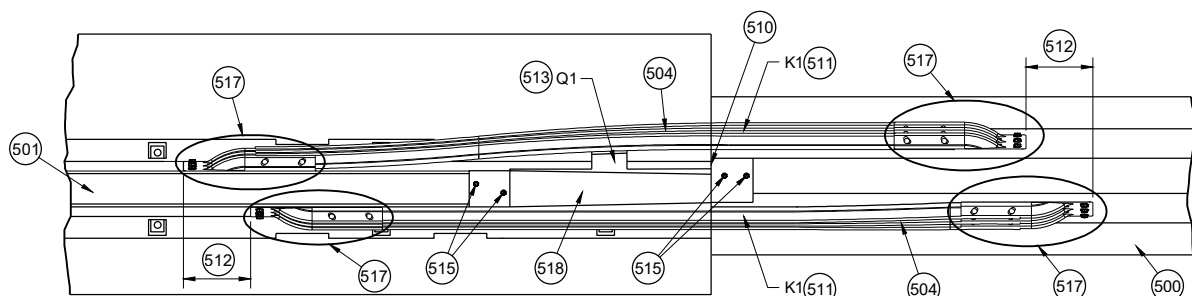
- (500) EXISTING RIGID BARRIERS (VARIES)
- (501) TEMPORARY BARRIER
- (502) SEE OTHER DETAIL ON HOW TO ANCHOR TEMPORARY BARRIER (BARRIER ASPHALT ANCHOR SHOWN).
- (503) ANCHORS ARE REQUIRED ON BOTH SIDE OF THE TEMPORARY BARRIER.
- (504) NESTED RAILS ARE REQUIRED ON BOTH SIDES OF THE TEMPORARY BARRIER FOR ALL INSTALLATIONS.
- (505) TRAFFIC TRAVELS FROM PERMANENT BARRIER TO TEMPORARY BARRIER.
- (506) TRAFFIC TRAVELS FROM TEMPORARY BARRIER TO PERMANENT BARRIER.
- (507) VERTICAL BARRIER
- (508) SAFETY SHAPE BARRIER
- (509) SINGLE SLOPE BARRIER
- (510) CAP END PLATE PLACED FLUSH WITH UPSTREAM END OF RIGID BARRIER.
- (511) BENT THRIE BEAM TO FIT.
- (512) THRIE BEAM PIECES ARE OFFSET 15 1/4" TO PREVENT INTERFERENCE FROM THE ANCHORS ON OPPOSING SIDES.
- (513) TWO (2) P1, P2 AND P3 ARE REQUIRED
- (514) FIVE (5) N1, N2 AND N3 ARE REQUIRED
- (515) TWO (2) R1, R2 AND R3 ARE REQUIRED
- (516) CUT WOOD BLOCK TO FIT.
- (517) SEE THRIE BEAM RAIL TERMINAL CONNECTOR DETAIL ASSEMBLY.
- (518) CAP ASSEMBLY
- (519) 4" MAX. GAP BETWEEN TEMPORARY BARRIER AND RIGID BARRIER.
- (520) ALL TWELVE SPLICE HOLES REQUIRE M1 AND M2



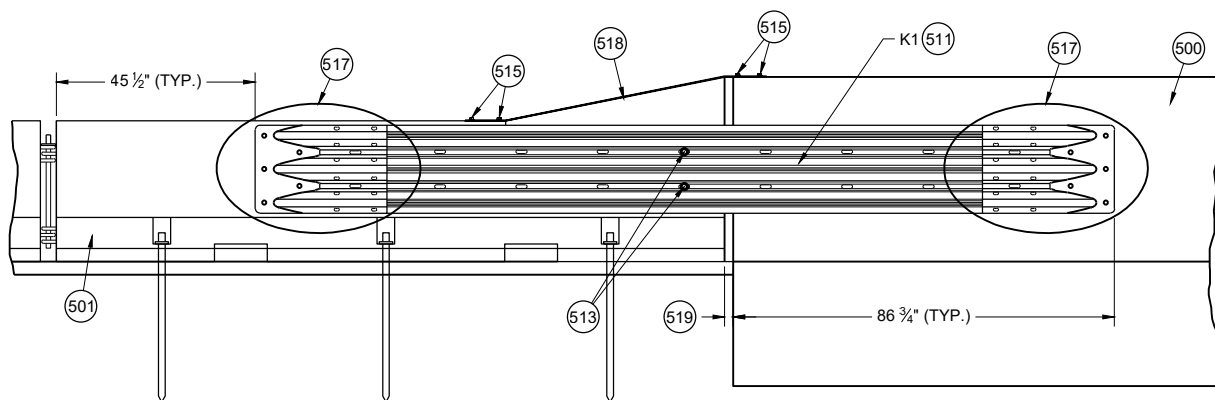
PROFILE VIEW



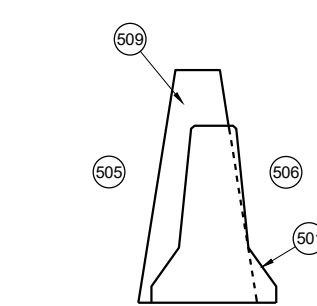
**PLAN VIEW
TRANSITION TO RIGID BARRIER**



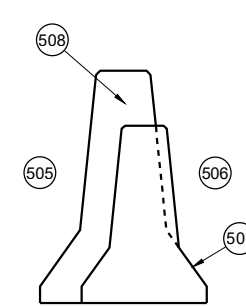
**PLAN DETAIL VIEW
TRANSITION TO RIGID BARRIER**



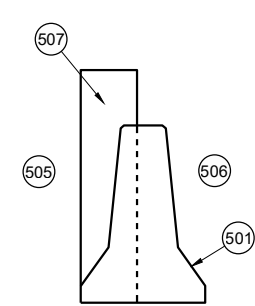
**FRONT DETAIL VIEW
TRANSITION TO RIGID BARRIER**



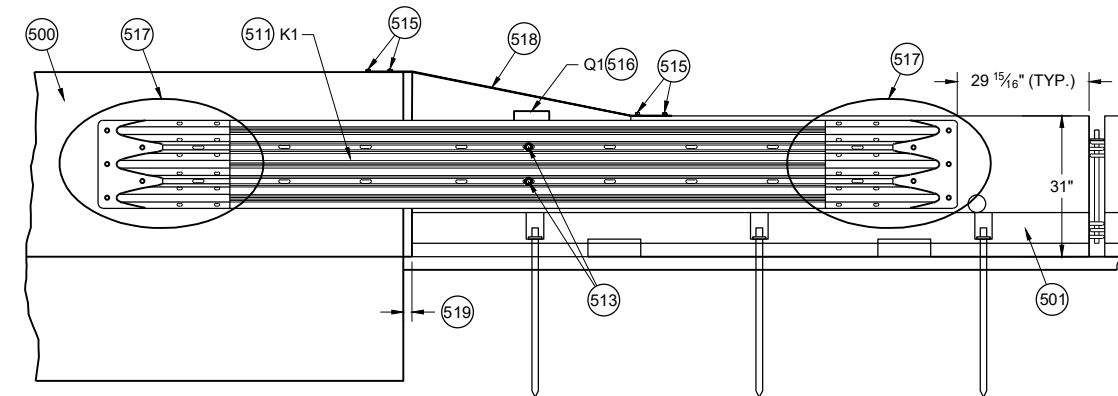
**CROSS SECTION
TEMPORARY BARRIER
PLACEMENT SINGLE SLOPE**



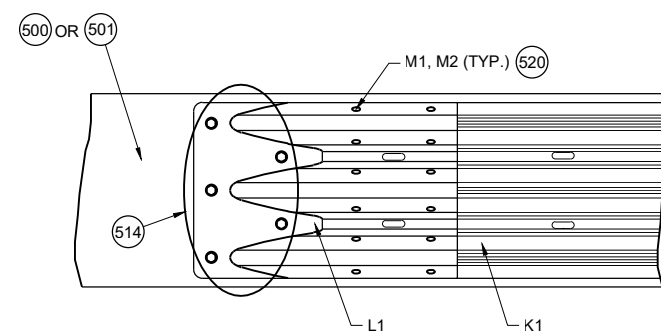
**CROSS SECTION
TEMPORARY BARRIER
PLACEMENT SAFETY SHAPE**



**CROSS SECTION
TEMPORARY BARRIER
PLACEMENT VERTICAL**



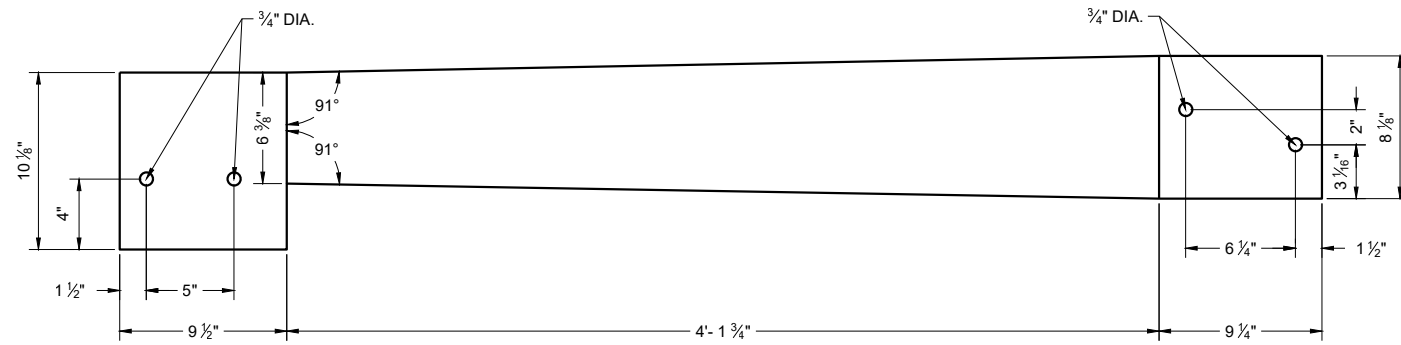
**BACK DETAIL VIEW
TRANSITION TO RIGID BARRIER**



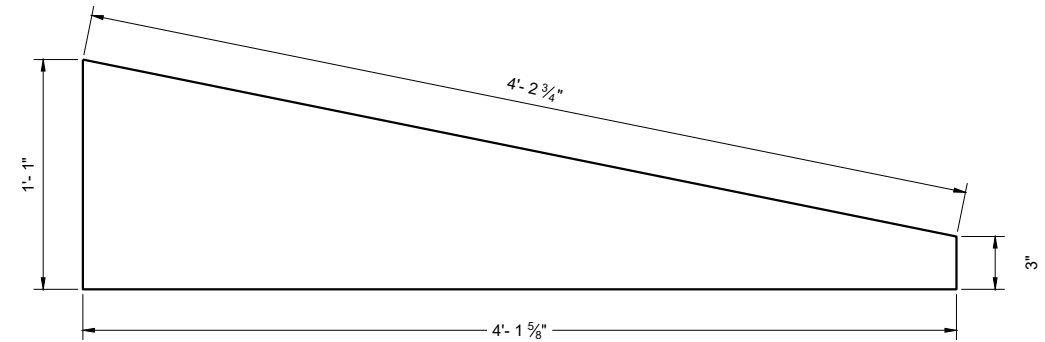
**(517) DETAIL PLAN VIEW
THRIE BEAM RAIL TERMINAL CONNECTOR ASSEMBLY**

**CONCRETE BARRIER
TEMPORARY PRECAST,
12' - 6"**

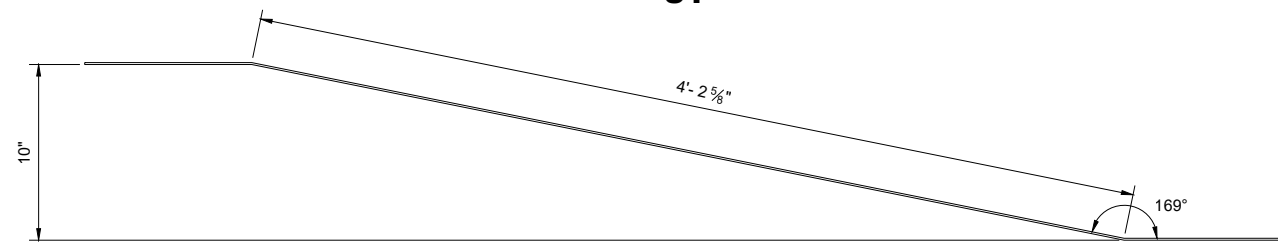
STATE OF WISCONSIN
DEPARTMENT OF TRANSPORTATION



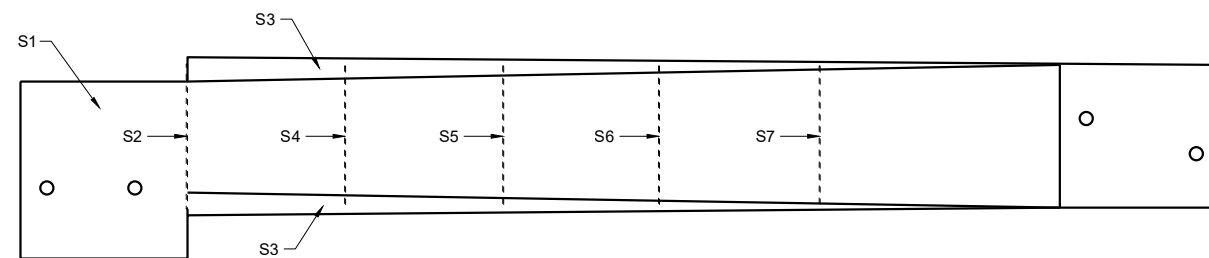
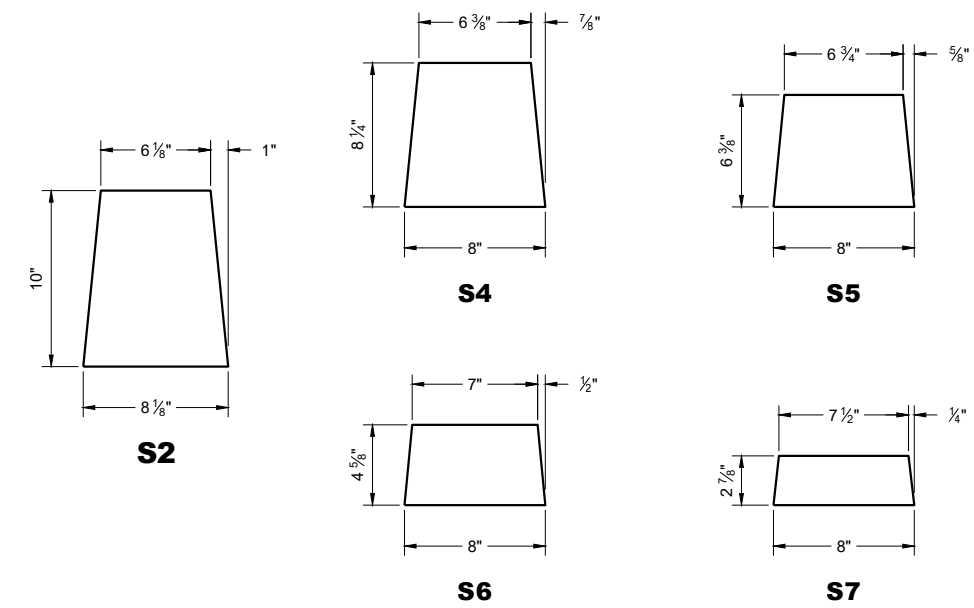
**TOP VIEW
S1**



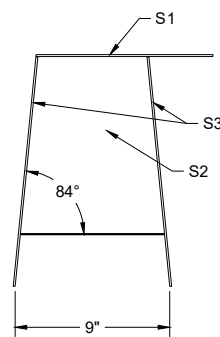
**SIDE VIEW
S3**



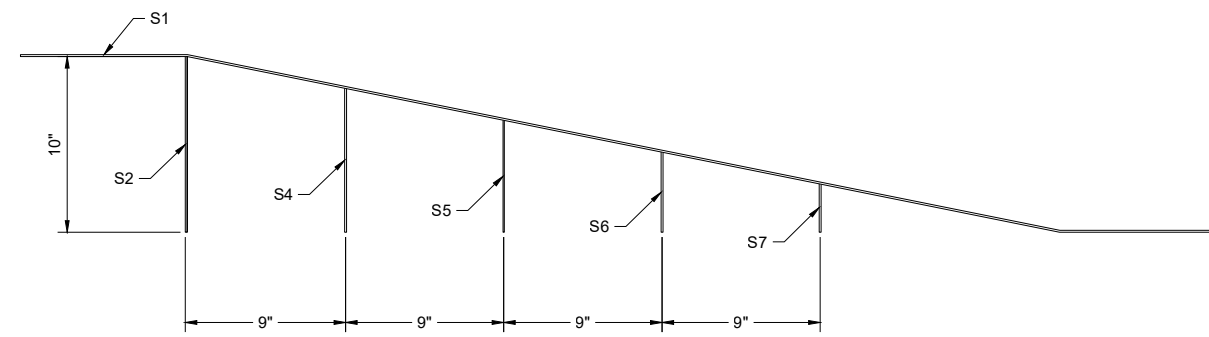
**ELEVATION VIEW
S1**



PLAN VIEW



BACK VIEW



SIDE VIEW ⁶⁰⁰

GENERAL NOTES

STITCH WELD GUSSET PLATES AND END PLATES ON THREE SIDES

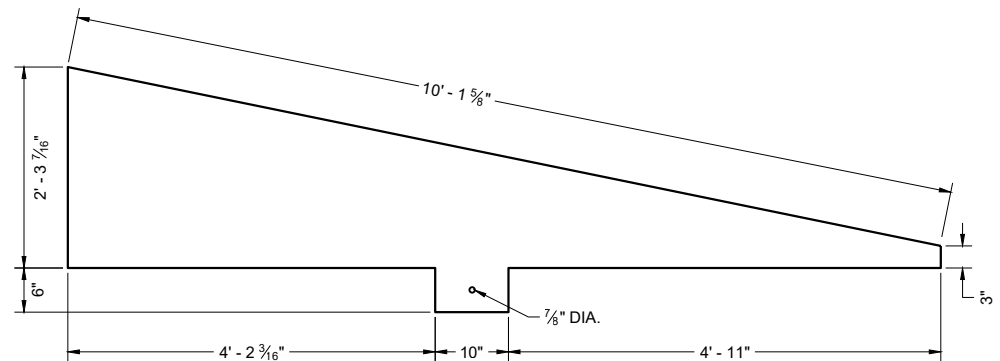
STITCH WELD TWO SIDE PLATES TO TOP PLATE, END PLATE AND GUSSETS.

⁶⁰⁰ SIDE PLATES (S3) NOT SHOWN FOR CLARITY.

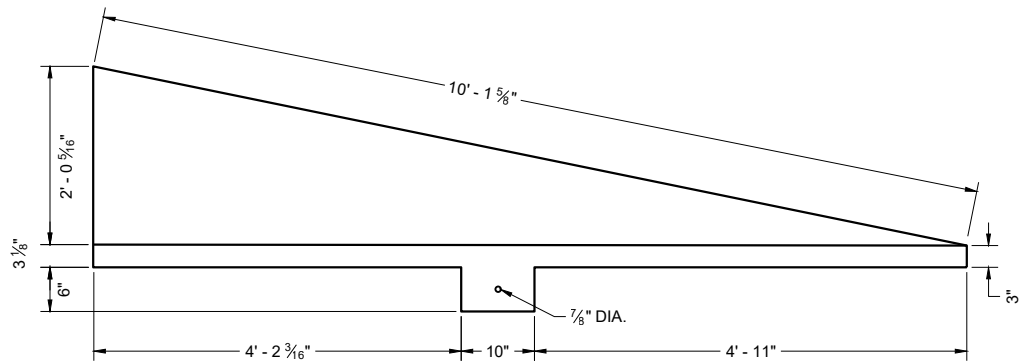
42" TOP CAP ASSEMBLY

**CONCRETE BARRIER
TEMPORARY PRECAST,
12' - 6"**

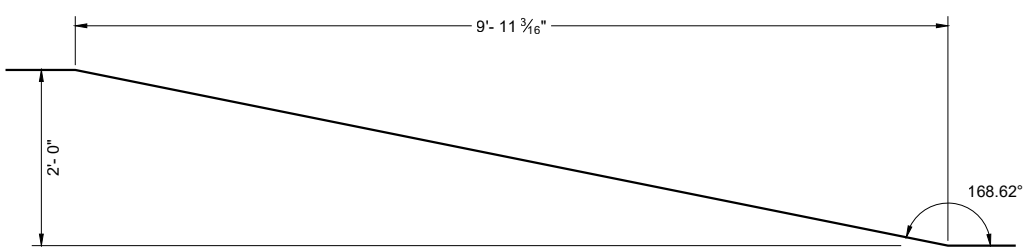
STATE OF WISCONSIN
DEPARTMENT OF TRANSPORTATION



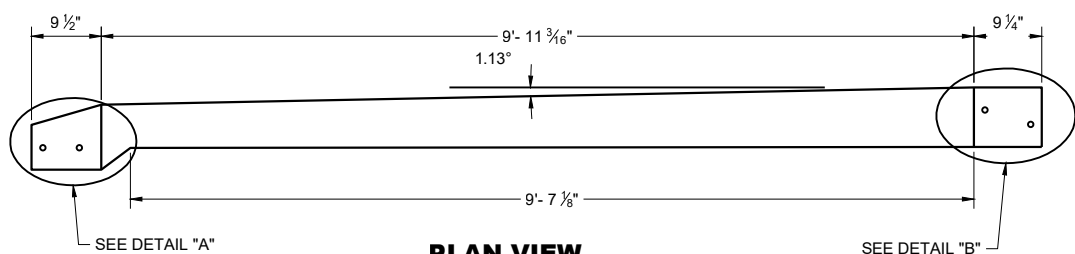
**SIDE VIEW
T4**



**SIDE VIEW
T3**



**SIDE VIEW
TOP PLATE T1**



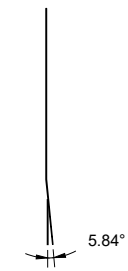
**PLAN VIEW
TOP PLATE T1**

GENERAL NOTES

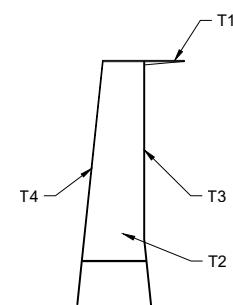
STITCH WELD GUSSET PLATES AND END PLATES ON THRIE SIDES
 STITCH WELD TWO SIDE PLATES TO TOP PLATE, END PLATE AND GUSSETS.
 SIDE PLATES, TOP PLATE, END PLATE AND GUSSETS ARE 12 GAUGE ASTM A36 GALVANIZED STEEL.

(700) SIDE PLATES (T3 AND T4) NOT SHOWN FOR CLARITY.

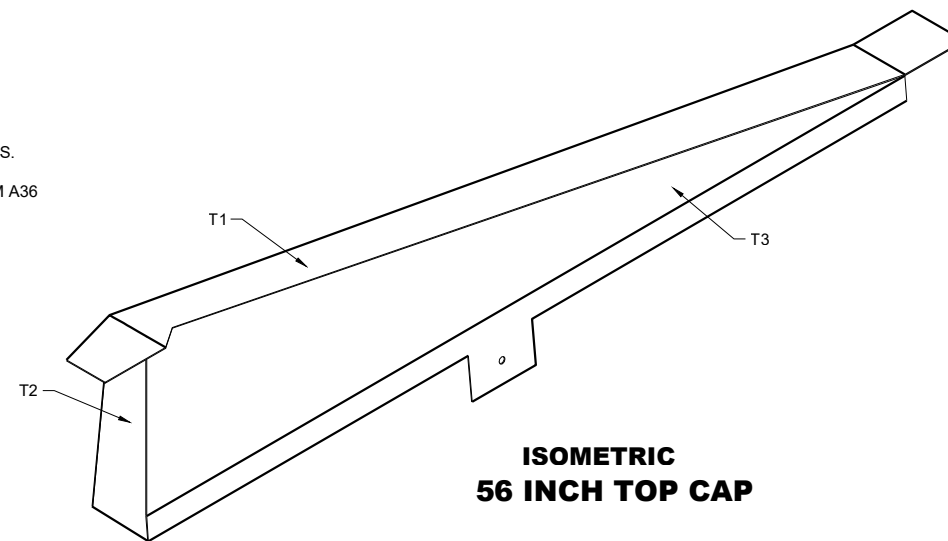
END VIEW



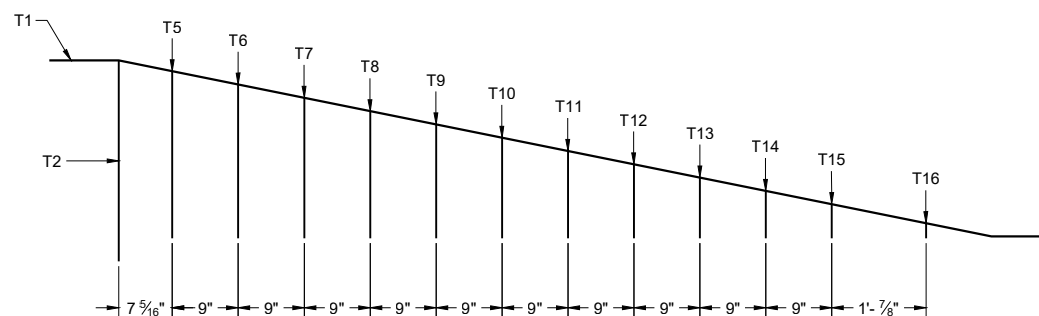
END VIEW



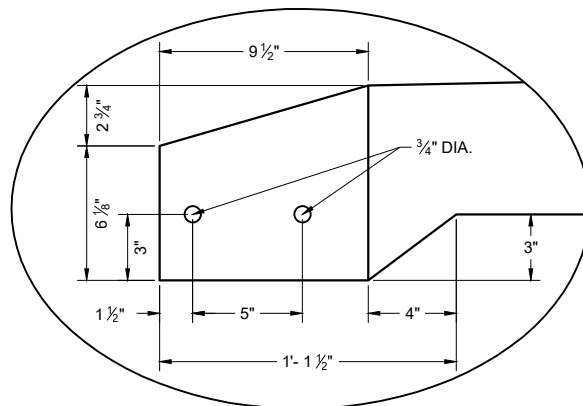
**END VIEW
56 INCH TOP CAP**



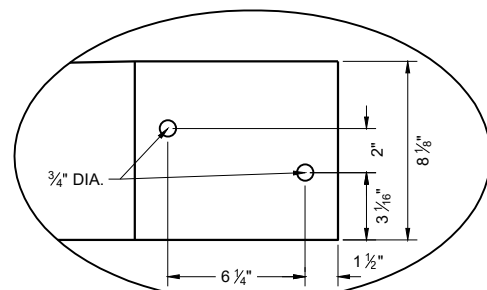
**ISOMETRIC
56 INCH TOP CAP**



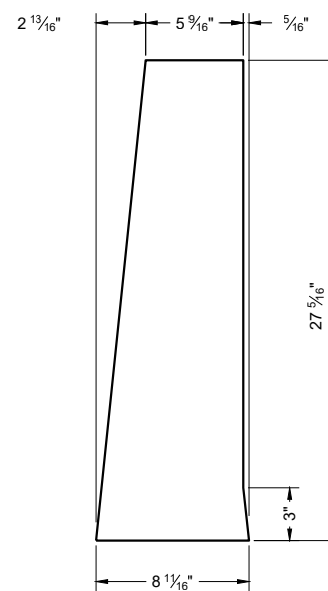
**SIDE VIEW
56 INCH TOP CAP (700)**



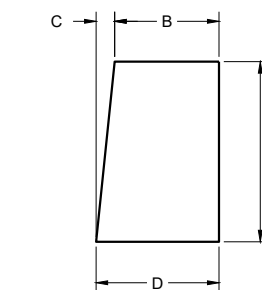
DETAIL "A"



DETAIL "B"



END PLATE T2

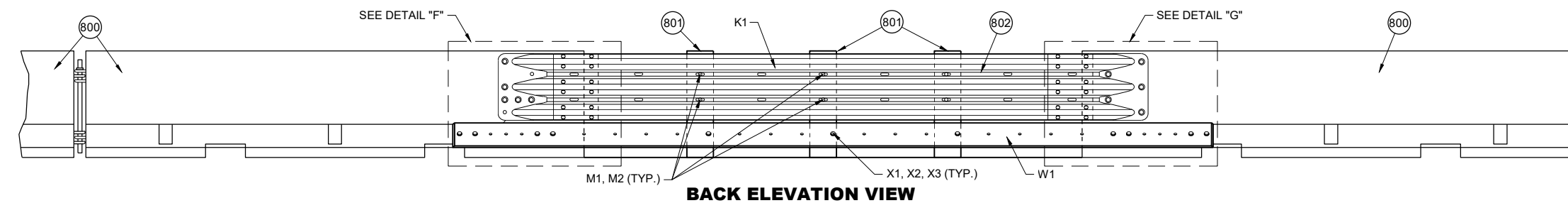
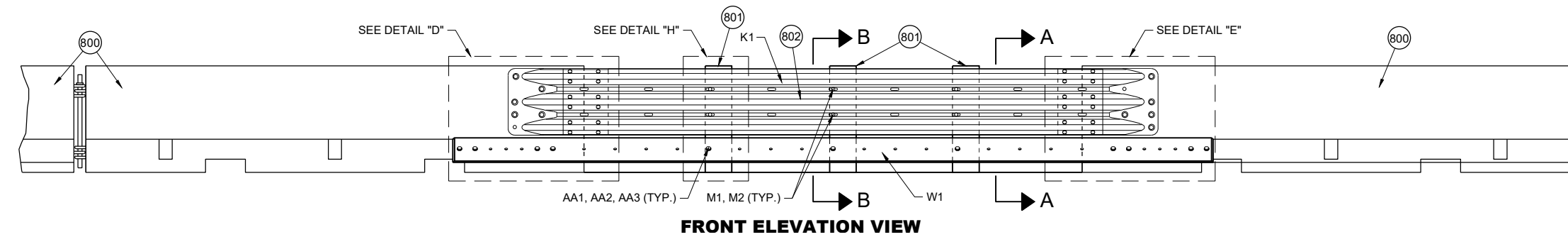
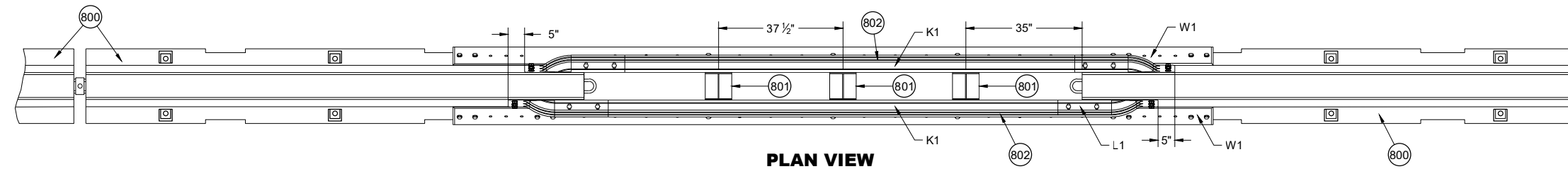
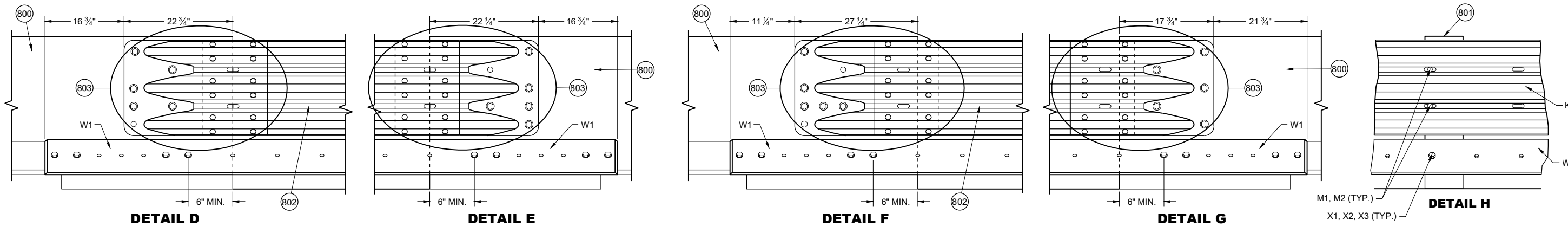


**GUSSET PLATES
T5 - T16**

GUSSET DIMENSIONS				
GUSSET NO.	A	B	C	D
T5	22 13/16"	5 11/16"	2 5/16"	8 1/16"
T6	21"	5 7/8"	2 3/16"	8 1/16"
T7	19 3/16"	6 1/16"	1 15/16"	8 1/16"
T8	17 3/8"	6 1/4"	1 13/16"	8 1/16"
T9	15 9/16"	6 7/16"	1 9/16"	8 1/16"
T10	13 3/4"	6 5/8"	1 7/16"	8 1/16"
T11	11 15/16"	6 13/16"	1 1/4"	8 1/16"
T12	10 1/2"	7"	1 1/16"	8 1/16"
T13	8 5/16"	7 3/16"	7/8"	8 1/16"
T14	6 1/2"	7 3/8"	1 1/16"	8 1/16"
T15	4 1/16"	7 9/16"	1/2"	8"
T16	2 7/8"	7 3/4"	1/4"	8"

**CONCRETE BARRIER
TEMPORARY PRECAST,
12' - 6"**

STATE OF WISCONSIN
DEPARTMENT OF TRANSPORTATION

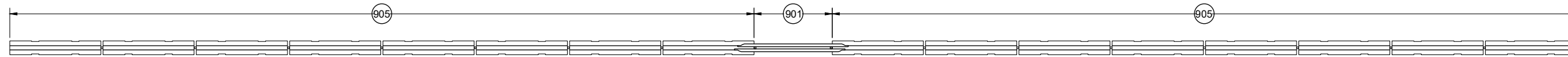


PORTABLE CONCRETE BARRIER GAP THRIE BEAM COVER

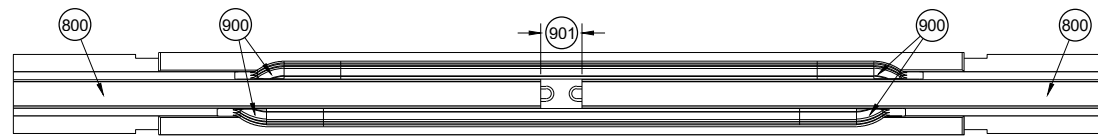
- GENERAL NOTES**
- (800) FREE STANDING TEMPORARY BARRIER
 - (801) GAP STIFFENER ASSEMBLY
 - (802) THRIE BEAMS ARE NESTED ON BOTH SIDES OF THE TEMPORARY BARRIER.
 - (803) SEE THRIE BEAM RAIL TERMINAL CONNECTOR DETAIL

**CONCRETE BARRIER
TEMPORARY PRECAST,
12' - 6"**

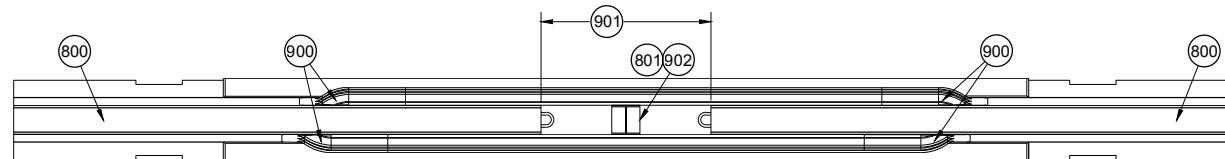
STATE OF WISCONSIN
DEPARTMENT OF TRANSPORTATION



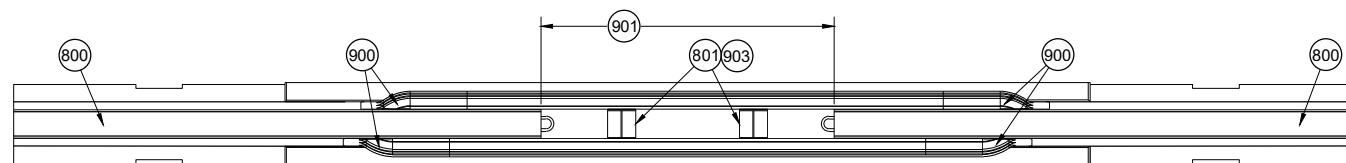
**PLAN VIEW
GAP WITHIN SPACING**



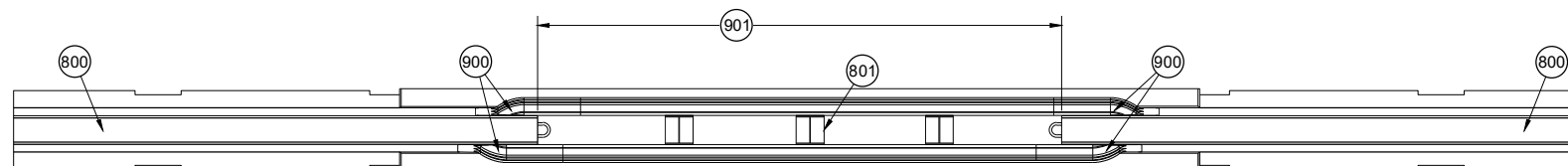
**PLAN VIEW
TEMPORARY BARRIER GAP OVER 4" TO 1' MAX.**



**PLAN VIEW
TEMPORARY BARRIER GAP OVER 1' TO 4' MAX.**



**PLAN VIEW
TEMPORARY BARRIER GAP OVER 4' TO 7' MAX.**



**PLAN VIEW
TEMPORARY BARRIER GAP OVER 7' TO 12.5' MAX.**

GENERAL NOTES

- 900 SEE OTHER DETAILS FOR TEMPORARY GAP HARDWARE (TYP.)
- 901 TEMPORARY BARRIER GAP
- 902 GAP STIFFENER ASSEMBLY CENTERED IN THE GAP.
- 903 GAP STIFFENER ASSEMBLY IS OFFSET 18 3/4" FROM CENTER
- 904 MINIMUM NUMBER OF GAP STIFFENERS SHOWN FOR THE GAP RANGE SHOWN.
- 905 MINIMUM OF 8 CONTINUOUS FREE STANDING TEMPORARY BARRIERS

6

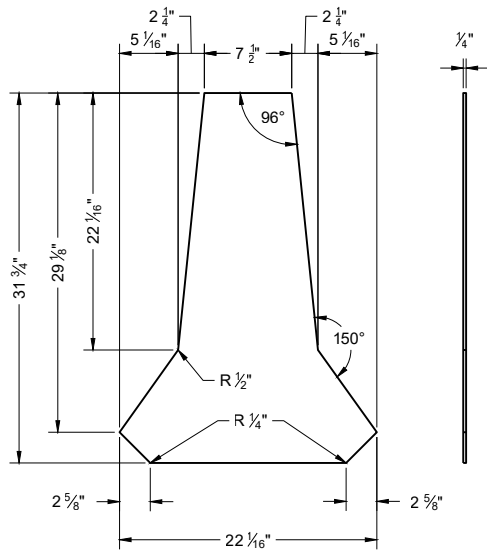
6

SDD 14B07-16i

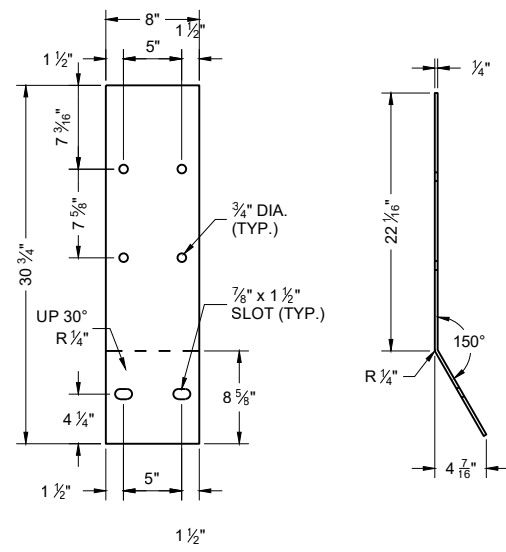
SDD 14B07-16i

**CONCRETE BARRIER
TEMPORARY PRECAST,
12' - 6"**

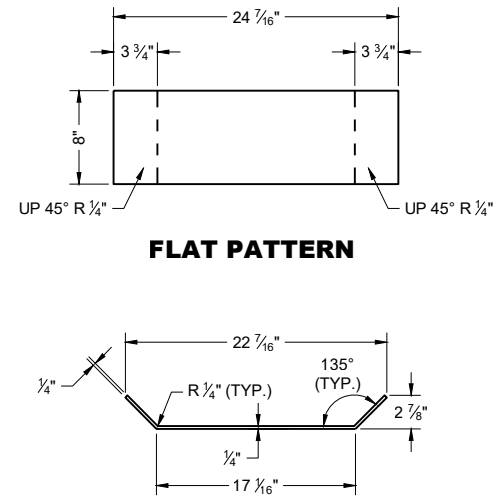
STATE OF WISCONSIN
DEPARTMENT OF TRANSPORTATION



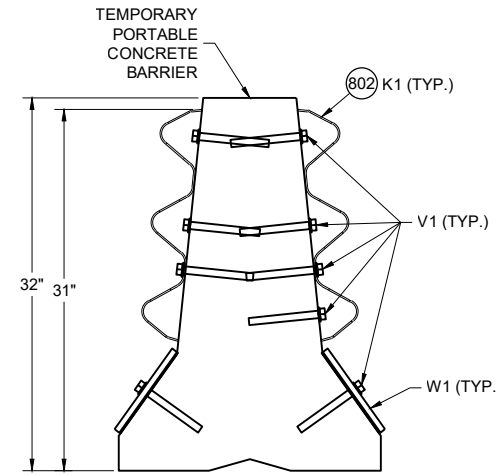
PROFILE VIEW **SIDE VIEW**
STIFFENER ASSEMBLY
CENTER PANEL U1



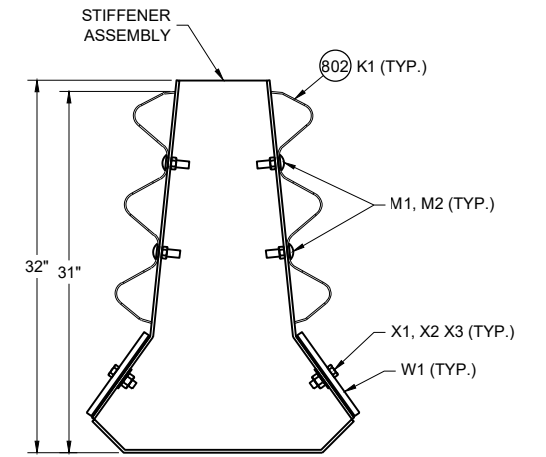
FLAT PATTERN **SIDE VIEW**
STIFFENER ASSEMBLY
SIDE PANEL U2



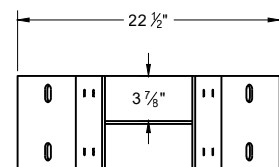
PROFILE VIEW
STIFFENER ASSEMBLY
BOTTOM PANEL U3



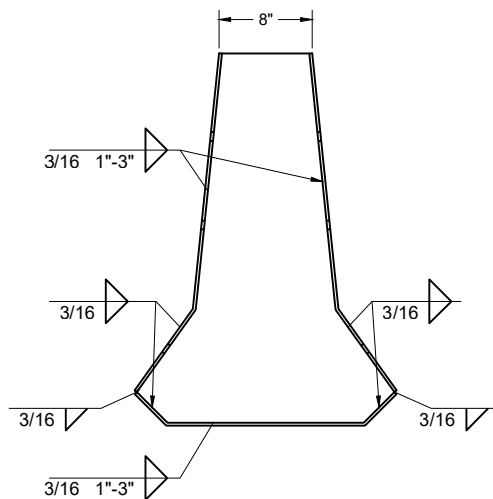
SECTION A - A



SECTION B - B

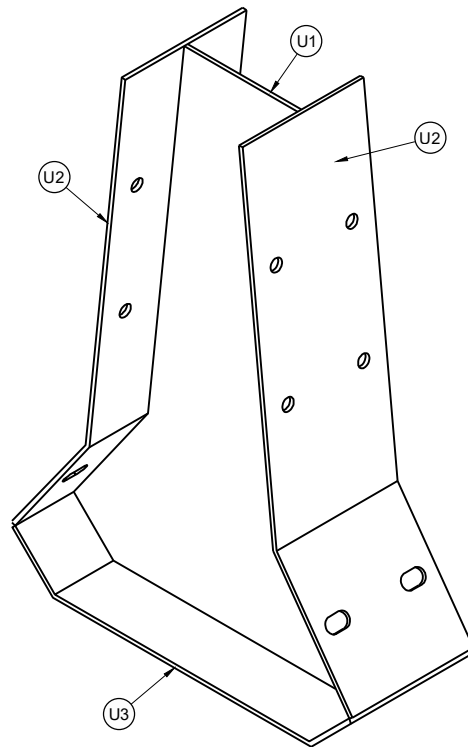


PLAN VIEW

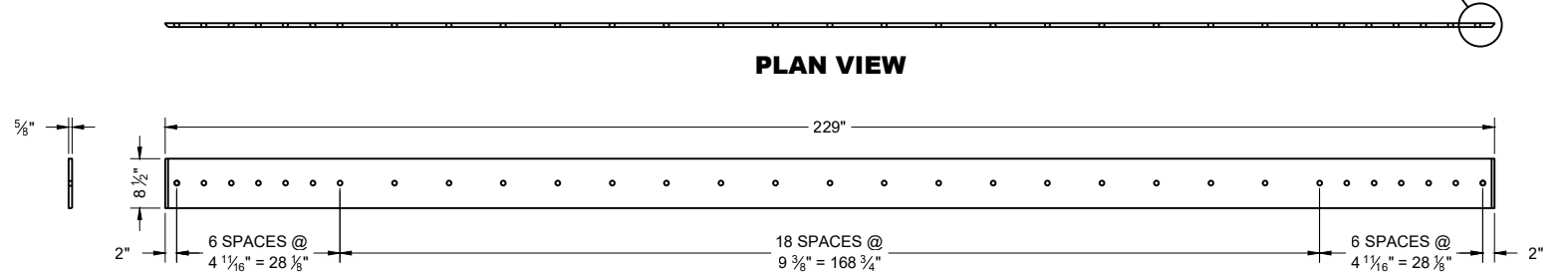


PROFILE VIEW **SIDE VIEW**

GAP STIFFENER ASSEMBLY

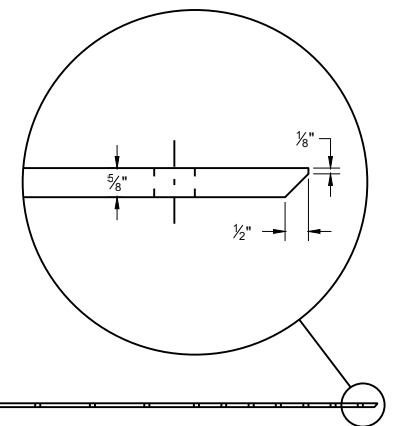


ISOMETRIC



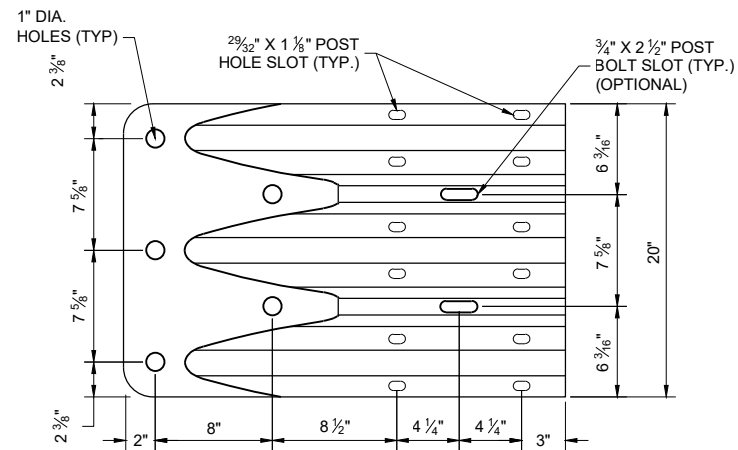
SIDE VIEW

ELEVATION VIEW
W1 TOE PLATE



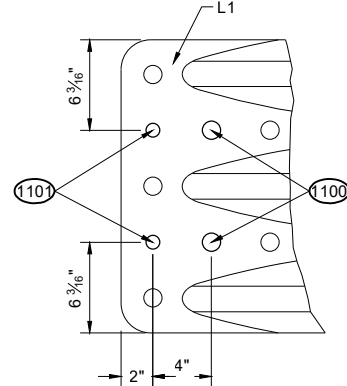
CONCRETE BARRIER
TEMPORARY PRECAST,
12' - 6"

STATE OF WISCONSIN
 DEPARTMENT OF TRANSPORTATION



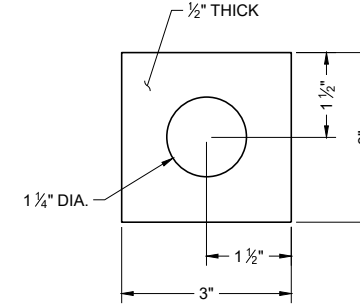
ELEVATION VIEW

**THRIE BEAM
TERMINAL CONNECTOR**



ELEVATION VIEW

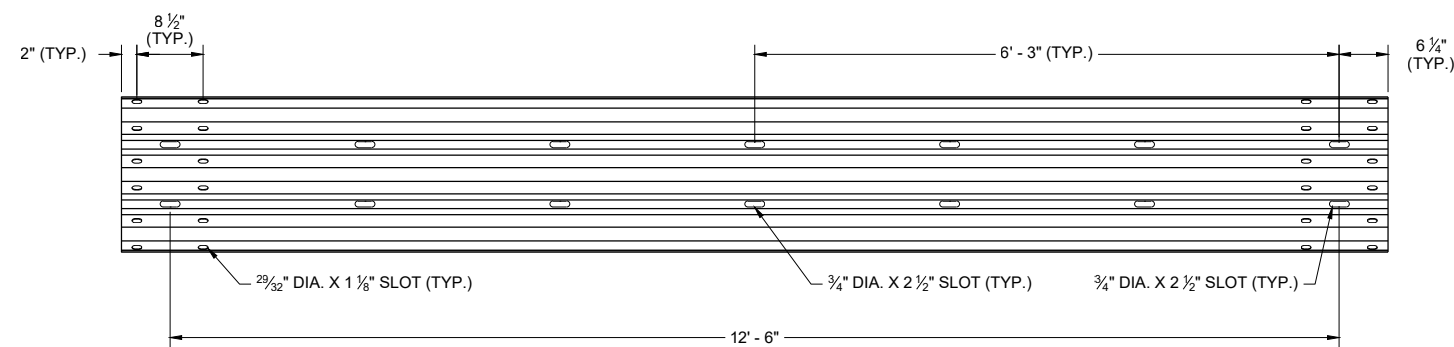
**ADDITIONAL THRIE BEAM
TERMINAL CONNECTOR HOLE DETAIL** (1102)



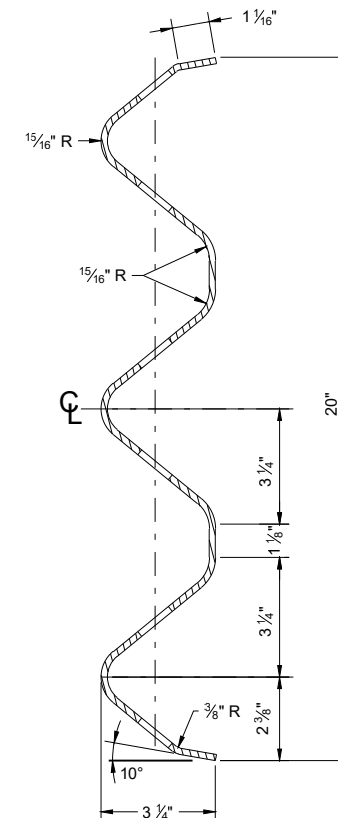
**PLATE WASHER DETAIL
G2, H3**

GENERAL NOTES

- (1100) 1" DIA. HOLE
- (1101) 3/4" DIA. HOLE
- (1102) PROVIDE HOLES IN THRIE BEAM TERMINAL CONNECTOR TO LIMIT STEEL REINFORCEMENT OR LOOP BAR CONFLICT. CONTRACTOR MAY FIELD DRILL ADDITIONAL HOLE OR PROVIDE THRIE BEAM TERMINAL CONNECTOR WITH ADDITIONAL HOLES FROM SUPPLIER.



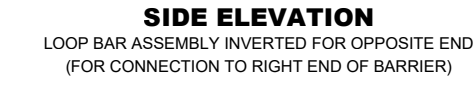
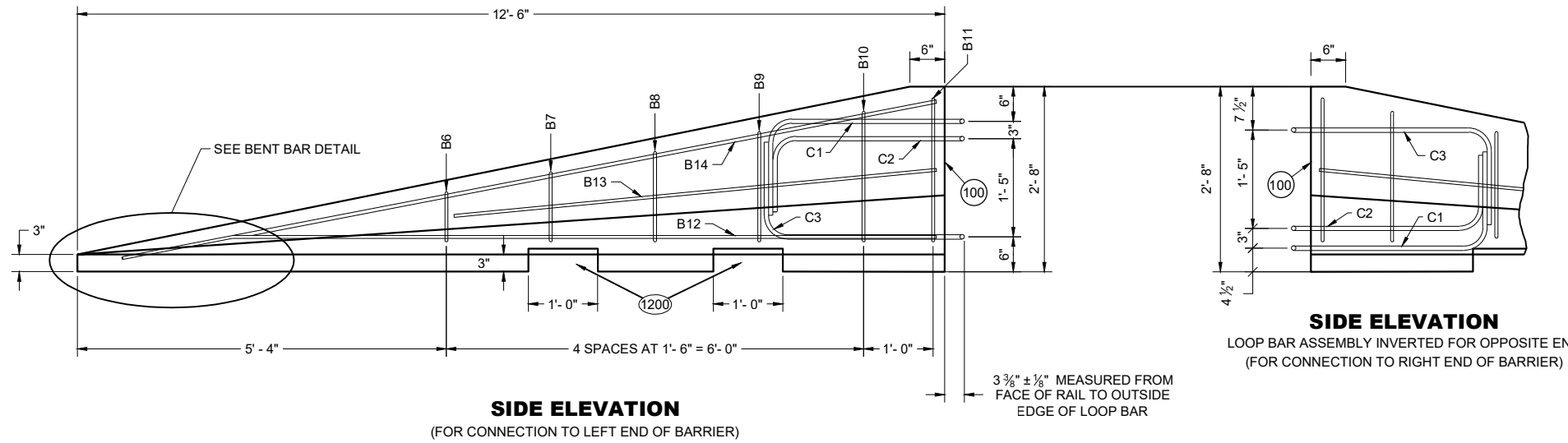
SLOTTED THRIE BEAM RAIL K1



**SECTION THROUGH
BEAM K1**

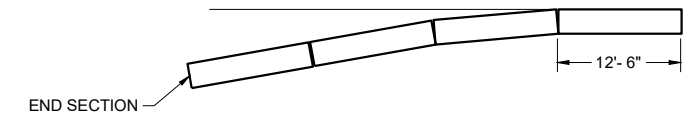
**CONCRETE BARRIER
TEMPORARY PRECAST,
12' - 6"**

STATE OF WISCONSIN
DEPARTMENT OF TRANSPORTATION

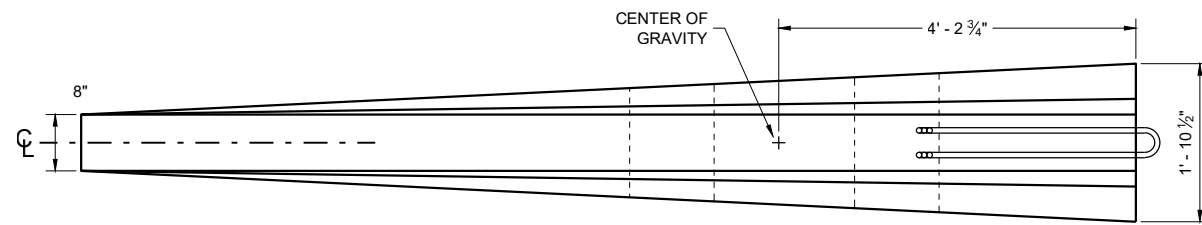


GENERAL NOTES

(1200) SEE LIFTING SLOT DETAIL. LOCATION OF LIFTING SLOTS DETERMINED BY CONTRACTOR.

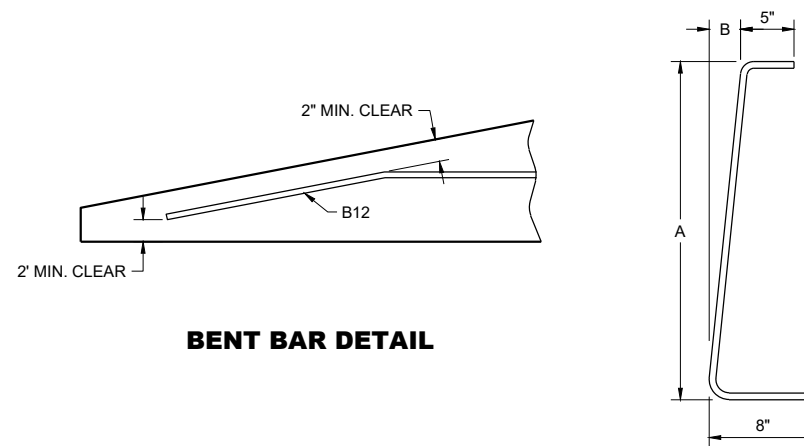
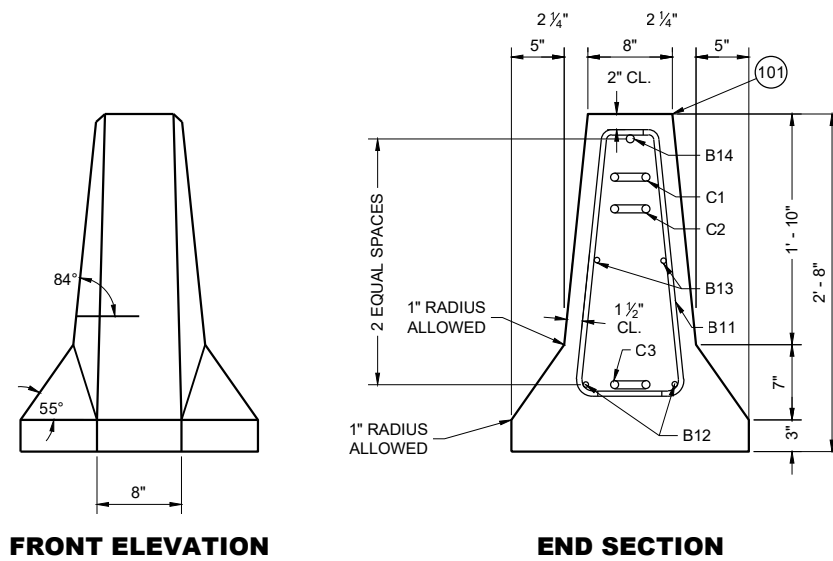
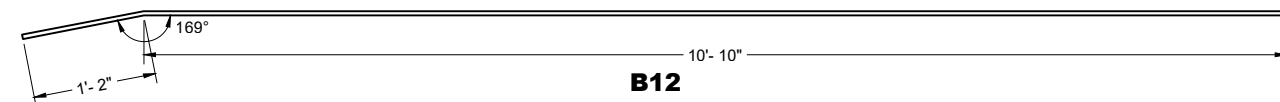


POSTED SPEED, (MPH)	FLARE RATE
40 OR LESS	6:1
45 OR GREATER	8:1



6

6



BAR	A	B
B6	10"	1"
B7	1'- 1"	1 1/4"
B8	1'- 5"	1 5/8"
B9	1'- 8"	1 7/8"
B10	2'- 0 1/2"	2 3/8"
B11	2'- 3"	2 3/4"

B BARS

2 OF EACH SIZE REQUIRED FOR STIRRUP ASSEMBLY

DETAILS OF BARRIER TAPER SECTION

**CONCRETE BARRIER
TEMPORARY PRECAST,
12' - 6"**

STATE OF WISCONSIN
DEPARTMENT OF TRANSPORTATION

SDD 14B07-16I

SDD 14B07-16I

BILL OF MATERIALS - CONCRETE BARRIER PRECAST

PART	DESCRIPTION	MATERIALS SPECIFICATIONS	NOTES
A1	PRECAST TEMPORARY BARRIER - CONCRETE	MIN. = f'c 5000 PSI	
B1	REBAR	STANDARD SPEC. 505.2 GRADE 60 UNCOATED REBAR	#5 REBAR, LENGTH 12'-2"
B2	REBAR	STANDARD SPEC. 505.2 GRADE 60 UNCOATED REBAR	#4 REBAR, LENGTH 12'-2"
B3	REBAR	STANDARD SPEC. 505.2 GRADE 60 UNCOATED REBAR	#5 REBAR, LENGTH 12'-2"
B4	REBAR	STANDARD SPEC. 505.2 GRADE 60 UNCOATED REBAR	#4 REBAR, LENGTH 6'-0"
B5	REBAR	STANDARD SPEC. 505.2 GRADE 60 UNCOATED REBAR	#6 REBAR, LENGTH 2'-11"
B6	REBAR	STANDARD SPEC. 505.2 GRADE 60 UNCOATED REBAR	#4 REBAR, LENGTH 1'-11"
B7	REBAR	STANDARD SPEC. 505.2 GRADE 60 UNCOATED REBAR	#4 REBAR, LENGTH 2'-2"
B8	REBAR	STANDARD SPEC. 505.2 GRADE 60 UNCOATED REBAR	#4 REBAR, LENGTH 2'-6"
B9	REBAR	STANDARD SPEC. 505.2 GRADE 60 UNCOATED REBAR	#4 REBAR, LENGTH 2'-9"
B10	REBAR	STANDARD SPEC. 505.2 GRADE 60 UNCOATED REBAR	#4 REBAR, LENGTH 3'-2"
B11	REBAR	STANDARD SPEC. 505.2 GRADE 60 UNCOATED REBAR	#4 REBAR, LENGTH 3'-4"
B12	REBAR	STANDARD SPEC. 505.2 GRADE 60 UNCOATED REBAR	#4 REBAR, LENGTH 12'-0"
B13	REBAR	STANDARD SPEC. 505.2 GRADE 60 UNCOATED REBAR	#4 REBAR, LENGTH 7'-9"
B14	REBAR	STANDARD SPEC. 505.2 GRADE 60 UNCOATED REBAR	#5 REBAR, LENGTH 11'-9"
C1	LOOP BAR	ASTM A709 GRADE 70 SMOOTH BAR OR ASTM A706 GRADE 60 REBAR UNCOATED	¾" DIA.
C2	LOOP BAR	ASTM A709 GRADE 70 SMOOTH BAR OR ASTM A706 GRADE 60 REBAR UNCOATED	¾" DIA.
C3	LOOP BAR	ASTM A709 GRADE 70 SMOOTH BAR OR ASTM A706 GRADE 60 REBAR UNCOATED	¾" DIA.
D1	CONNECTION PIN - ROD	ASTM A36 MIN. STRENGTH 36 KSI / ASTM A529 MAX. STRENGTH 50 KSI / ASTM A572 MAX STRENGTH 50 KSI / ASTM A709 MAX STRENGTH 50 KSI / ASTM A992 MAX STRENGTH 50 KSI	1 ¼" DIA.
D2	CONNECTION PIN - TOP PLATE	ASTM A36 MIN. STRENGTH 36 KSI / ASTM A529 MAX. STRENGTH 50 KSI / ASTM A572 MAX STRENGTH 50 KSI / ASTM A709 MAX STRENGTH 50 KSI / ASTM A992 MAX STRENGTH 50 KSI	
G1	BOLT THROUGH ANCHOR - THREADED ROD	HOT DIP AASHTO M232 CLASS / ASTM A153 CLASS C / ASTM F2329 C OR MECHANICAL GALVANIZE TO AASHTO M298 CLASS 55 TYPE 2 / ASTM B695 CLASS 55 TYPE 2 A307 GRADE A OR SAE J429 GRADE 2 UNC	1 ½" DIA.
G2	BOLT THROUGH ANCHOR - WASHER, SQUARE	ASTM A36 MIN. STRENGTH 36 KSI / ASTM A529 MAX. STRENGTH 50 KSI / ASTM A572 MAX STRENGTH 50 KSI / ASTM A709 MAX STRENGTH 50 KSI / ASTM A992 MAX STRENGTH 50 KSI	
G3	BOLT THROUGH ANCHOR - NUT	HOT DIP AASHTO M232 CLASS / ASTM A153 CLASS C / ASTM F2329 C OR MECHANICAL GALVANIZE TO AASHTO M298 CLASS 55 TYPE 2 / ASTM B695 CLASS 55 UNC OVER TAP NUTS AS SPECIFIED IN AASHTO 291 / ASTM A 563 HEAVY HEX HEAD ASTM A563DH OR SAE J995 GRADE 5	
H1	ADHESIVE ANCHOR - ADHESIVE	ICC-ES-AC308 5 ½" EMBEDMENT WITH A MIN. BOND STRENGTH OF 1,650 PSI. SEE 603.2 AND 603.3.1.2 OF THE WISCONSIN STANDARD SPECIFICATIONS FOR MORE INFORMATION ON ADHESIVE ANCHORS.	
H2	ADHESIVE ANCHOR - THREADED ROD	HOT DIP AASHTO M232 CLASS / ASTM A153 CLASS C / ASTM F2329 C OR MECHANICAL GALVANIZE TO AASHTO M298 CLASS 55 TYPE 2 / ASTM B695 CLASS 55 TYPE 2 A307 GRADE A / SAE J429 GRADE 2 UNC	1 ½" DIA.
H3	ADHESIVE ANCHOR - WASHER, SQUARE	ASTM A36 MIN. STRENGTH 36 KSI / ASTM A529 MAX. STRENGTH 50 KSI / ASTM A572 MAX STRENGTH 50 KSI / ASTM A709 MAX STRENGTH 50 KSI / ASTM A992 MAX STRENGTH 50 KSI	
H4	ADHESIVE ANCHOR - NUT	HOT DIP AASHTO M232 CLASS / ASTM A153 CLASS C / ASTM F2329 C OR MECHANICAL GALVANIZE TO AASHTO M298 CLASS 55 TYPE 2 / ASTM B695 CLASS 55 UNC OVER TAP NUTS AS SPECIFIED IN AASHTO 291 / ASTM A 563 HEAVY HEX HEAD ASTM A563DH OR SAE J995 GRADE 5	
J1	ASPHALT ANCHOR PIN - ROD	ASTM A36 MIN. STRENGTH 36 KSI / ASTM A529 MAX. STRENGTH 50 KSI / ASTM A572 MAX STRENGTH 50 KSI / ASTM A709 MAX STRENGTH 50 KSI / ASTM A992 MAX STRENGTH 50 KSI	1 ½" DIA.
J2	ASPHALT ANCHOR PIN - STOP PLATE	ASTM A36 MIN. STRENGTH 36 KSI / ASTM A529 MAX. STRENGTH 50 KSI / ASTM A572 MAX STRENGTH 50 KSI / ASTM A709 MAX STRENGTH 50 KSI / ASTM A992 MAX STRENGTH 50 KSI	
K1	THRIE BEAM RAIL	AASHTO M180 CLASS A TYPE 2 APPROVED PRODUCER	12 GAUGE
L1	THRIE BEAM RAIL - TERMINAL	AASHTO M180 CLASS A TYPE 2 APPROVED PRODUCER	12 GAUGE

PART	DESCRIPTION	MATERIALS SPECIFICATIONS	NOTES
M1	SPLICE BOLT	HOT DIP AASHTO M232 CLASS / ASTM A153 CLASS C / ASTM F2329 C OR MECHANICAL GAL. TO AASHTO M298 CLASS 55 TYPE 2 / ASTM B695 CLASS 55 TYPE 2 UNC AASHTO M180 HEAD ASTM A307 GRADE B OR SAE J429 GRADE 2 OR ASTM F1554 GRADE 36	½" DIA.
M2	SPLICE BOLT - NUT	HOT DIP AASHTO M232 CLASS / ASTM A153 CLASS C / ASTM F2329 C OR MECHANICAL GALVANIZE TO AASHTO M298 CLASS 55 TYPE 2 / ASTM B695 CLASS 55 UNC OVER TAP NUTS AS SPECIFIED IN AASHTO 291 / ASTM A 563 AASHTO M180 RECESSED HEAVY HEX HEAD ASTM A563DH OR SAE J995 GRADE 5	
N1	THRIE BEAM RAIL TERMINAL - MECHANICAL ANCHOR	HOT DIP AASHTO M232 CLASS / ASTM A153 CLASS C / ASTM F2329 C OR MECHANICAL GALVANIZE TO AASHTO M298 CLASS 55 TYPE 2 / ASTM B695 CLASS 55 UNC OVER TAP NUTS AS SPECIFIED IN AASHTO 291 / ASTM A 563 AASHTO M180 RECESSED HEAVY HEX HEAD ASTM A563DH OR SAE J995 GRADE 5	¾" DIA. LENGTH 6"
N2	THRIE BEAM RAIL TERMINAL - WASHER	HOT DIP AASHTO M232 CLASS / ASTM A153 CLASS C / ASTM F2329 C OR MECHANICAL GALVANIZE TO AASHTO M298 CLASS 55 TYPE 2 / ASTM B695 CLASS 55 TYPE 2 F436 TYPE 1	
N3	THRIE BEAM RAIL TERMINAL MECHANICAL OR ADHESIVE ANCHOR	MINIMUM MECHANICAL OR ADHESIVE ANCHOR STRENGTH REQUIREMENTS: ULTIMATE TENSILE LOAD 17.9 KIPS AND ULTIMATE SHEAR LOAD 21.96 KIPS. SEE 603.2 AND 603.3.1.2 OF THE WISCONSIN STANDARD SPECIFICATIONS FOR MORE INFORMATION ON ADHESIVE ANCHORS.	
P1	THRIE BEAM RAIL CONNECTION 1-BOLT	HOT DIP AASHTO M232 CLASS / ASTM A153 CLASS C / ASTM F2329 C OR MECHANICAL GALVANIZE TO AASHTO M298 CLASS 55 TYPE 2 / ASTM B695 CLASS 55 UNC OVER TAP NUTS AS SPECIFIED IN AASHTO 291 / ASTM A 563 AASHTO M180 RECESSED HEAVY HEX HEAD ASTM A563DH OR SAE J995 GRADE 5	¾" DIA.
P2	THRIE BEAM RAIL CONNECTION 1-WASHER	HOT DIP AASHTO M232 CLASS / ASTM A153 CLASS C / ASTM F2329 C OR MECHANICAL GAL. TO AASHTO M298 CLASS 55 TYPE 2 / ASTM B695 CLASS 55 TYPE 2 F436 TYPE 1	
P3	THRIE BEAM RAIL CONNETION 1- MECHANICAL OR ADHESIVE ANCHOR	MINIMUM MECHANICAL OR ADHESIVE ANCHOR STRENGTH REQUIREMENTS: ULTIMATE TENSILE LOAD 9.48 KIPS AND ULTIMATE SHEAR LOAD 10.48 KIPS. SEE 603.2 AND 603.3.1.2 OF THE WISCONSIN STANDARD SPECIFICATIONS FOR MORE INFORMATION ON ADHESIVE ANCHORS.	
Q1	BLOCK WOOD	SEE STANDARD SPEC. 614	
R1	CAP - BOLT	HOT DIP AASHTO M232 CLASS / ASTM A153 CLASS C / ASTM F2329 C OR MECHANICAL GALVANIZE TO AASHTO M298 CLASS 55 TYPE 2 / ASTM B695 CLASS 55 UNC OVER TAP NUTS AS SPECIFIED IN AASHTO 291 / ASTM A 563 AASHTO M180 RECESSED HEAVY HEX HEAD ASTM A563DH OR SAE J995 GRADE 5	½" DIA.
R2	CAP - BOLT - WASHER	HOT DIP AASHTO M232 CLASS / ASTM A153 CLASS C / ASTM F2329 C OR MECHANICAL GAL. TO AASHTO M298 CLASS 55 TYPE 2 / ASTM B695 CLASS 55 TYPE 2 F436 TYPE 1	
R3	CAP - BOLT - MECHANICAL ANCHOR	MINIMUM MECHANICAL OR ADHESIVE ANCHOR STRENGTH REQUIREMENTS ULTIMATE TENSILE LOAD 12.14 KIPS AND ULTIMATE SHEAR LOAD 17.5 KIPS. SEE 603.2 AND 603.3.1.2 OF THE WISCONSIN STANDARD SPECIFICATIONS FOR MORE INFORMATION ON ADHESIVE ANCHORS.	12 GAUGE
S1	CAP 42-INCH TOP PLATE	AASHTO M111 / ASTM A123 ASTM A36 MIN. STRENGTH 36 KSI, OR ASTM A529 MAX. STRENGTH 50 KSI, OR ASTM A572 MAX. STRENGTH 50 KSI, OR ASTM A709 MAX. STRENGTH 50 KSI, OR ASTM A992 MAX. STRENGTH 50 KSI	12 GAUGE
S2	CAP 42-INCH END PLATE	AASHTO M111 / ASTM A123 ASTM A36 MIN. STRENGTH 36 KSI, OR ASTM A529 MAX. STRENGTH 50 KSI, OR ASTM A572 MAX. STRENGTH 50 KSI, OR ASTM A709 MAX. STRENGTH 50 KSI, OR ASTM A992 MAX. STRENGTH 50 KSI	12 GAUGE
S3	CAP 42-INCH SIDE PLATE	AASHTO M111 / ASTM A123 ASTM A36 MIN. STRENGTH 36 KSI, OR ASTM A529 MAX. STRENGTH 50 KSI, OR ASTM A572 MAX. STRENGTH 50 KSI, OR ASTM A709 MAX. STRENGTH 50 KSI, OR ASTM A992 MAX. STRENGTH 50 KSI	12 GAUGE
S4	CAP 42-INCH GUSSET 1	AASHTO M111 / ASTM A123 ASTM A36 MIN. STRENGTH 36 KSI, OR ASTM A529 MAX. STRENGTH 50 KSI, OR ASTM A572 MAX. STRENGTH 50 KSI, OR ASTM A709 MAX. STRENGTH 50 KSI, OR ASTM A992 MAX. STRENGTH 50 KSI	12 GAUGE
S5	CAP 42-INCH GUSSET 2	AASHTO M111 / ASTM A123 ASTM A36 MIN. STRENGTH 36 KSI, OR ASTM A529 MAX. STRENGTH 50 KSI, OR ASTM A572 MAX. STRENGTH 50 KSI, OR ASTM A709 MAX. STRENGTH 50 KSI, OR ASTM A992 MAX. STRENGTH 50 KSI	12 GAUGE
S6	CAP 42-INCH GUSSET 3	AASHTO M111 / ASTM A123 ASTM A36 MIN. STRENGTH 36 KSI, OR ASTM A529 MAX. STRENGTH 50 KSI, OR ASTM A572 MAX. STRENGTH 50 KSI, OR ASTM A709 MAX. STRENGTH 50 KSI, OR ASTM A992 MAX. STRENGTH 50 KSI	12 GAUGE
S7	CAP 42-INCH GUSSET 4	AASHTO M111 / ASTM A123 ASTM A36 MIN. STRENGTH 36 KSI, OR ASTM A529 MAX. STRENGTH 50 KSI, OR ASTM A572 MAX. STRENGTH 50 KSI, OR ASTM A709 MAX. STRENGTH 50 KSI, OR ASTM A992 MAX. STRENGTH 50 KSI	12 GAUGE

6

SDD 14B07-16m

6

SDD 14B07-16m

**CONCRETE BARRIER
TEMPORARY PRECAST,
12' - 6"**

STATE OF WISCONSIN
DEPARTMENT OF TRANSPORTATION

BILL OF MATERIALS - CONCRETE BARRIER PRECAST

PART	DESCRIPTION	MATERIALS SPECIFICATIONS	NOTES
T1	CAP 56-INCH TOP PLATE	AASHTO M111 / ASTM A123 ASTM A36 MIN. STRENGTH 36 KSI, OR ASTM A529 MAX. STRENGTH 50 KSI, OR ASTM A572 MAX. STRENGTH 50 KSI, OR ASTM A709 MAX. STRENGTH 50 KSI, OR ASTM A992 MAX. STRENGTH 50 KSI	12 GAUGE
T2	CAP 56-INCH END PLATE	AASHTO M111 / ASTM A123 ASTM A36 MIN. STRENGTH 36 KSI, OR ASTM A529 MAX. STRENGTH 50 KSI, OR ASTM A572 MAX. STRENGTH 50 KSI, OR ASTM A709 MAX. STRENGTH 50 KSI, OR ASTM A992 MAX. STRENGTH 50 KSI	12 GAUGE
T3	CAP 56-INCH SIDE PLATE 1	AASHTO M111 / ASTM A123 ASTM A36 MIN. STRENGTH 36 KSI, OR ASTM A529 MAX. STRENGTH 50 KSI, OR ASTM A572 MAX. STRENGTH 50 KSI, OR ASTM A709 MAX. STRENGTH 50 KSI, OR ASTM A992 MAX. STRENGTH 50 KSI	12 GAUGE
T4	CAP 56-INCH SIDE PLATE 2	AASHTO M111 / ASTM A123 ASTM A36 MIN. STRENGTH 36 KSI, OR ASTM A529 MAX. STRENGTH 50 KSI, OR ASTM A572 MAX. STRENGTH 50 KSI, OR ASTM A709 MAX. STRENGTH 50 KSI, OR ASTM A992 MAX. STRENGTH 50 KSI	12 GAUGE
T5	CAP 56-INCH GUSSET 1	AASHTO M111 / ASTM A123 ASTM A36 MIN. STRENGTH 36 KSI, OR ASTM A529 MAX. STRENGTH 50 KSI, OR ASTM A572 MAX. STRENGTH 50 KSI, OR ASTM A709 MAX. STRENGTH 50 KSI, OR ASTM A992 MAX. STRENGTH 50 KSI	12 GAUGE
T6	CAP 56-INCH GUSSET 2	AASHTO M111 / ASTM A123 ASTM A36 MIN. STRENGTH 36 KSI, OR ASTM A529 MAX. STRENGTH 50 KSI, OR ASTM A572 MAX. STRENGTH 50 KSI, OR ASTM A709 MAX. STRENGTH 50 KSI, OR ASTM A992 MAX. STRENGTH 50 KSI	12 GAUGE
T7	CAP 56-INCH GUSSET 3	AASHTO M111 / ASTM A123 ASTM A36 MIN. STRENGTH 36 KSI, OR ASTM A529 MAX. STRENGTH 50 KSI, OR ASTM A572 MAX. STRENGTH 50 KSI, OR ASTM A709 MAX. STRENGTH 50 KSI, OR ASTM A992 MAX. STRENGTH 50 KSI	12 GAUGE
T8	CAP 42-INCH GUSSET 4	AASHTO M111 / ASTM A123 ASTM A36 MIN. STRENGTH 36 KSI, OR ASTM A529 MAX. STRENGTH 50 KSI, OR ASTM A572 MAX. STRENGTH 50 KSI, OR ASTM A709 MAX. STRENGTH 50 KSI, OR ASTM A992 MAX. STRENGTH 50 KSI	12 GAUGE
T9	CAP 42-INCH GUSSET 5	AASHTO M111 / ASTM A123 ASTM A36 MIN. STRENGTH 36 KSI, OR ASTM A529 MAX. STRENGTH 50 KSI, OR ASTM A572 MAX. STRENGTH 50 KSI, OR ASTM A709 MAX. STRENGTH 50 KSI, OR ASTM A992 MAX. STRENGTH 50 KSI	12 GAUGE
T10	CAP 42-INCH GUSSET 6	AASHTO M111 / ASTM A123 ASTM A36 MIN. STRENGTH 36 KSI, OR ASTM A529 MAX. STRENGTH 50 KSI, OR ASTM A572 MAX. STRENGTH 50 KSI, OR ASTM A709 MAX. STRENGTH 50 KSI, OR ASTM A992 MAX. STRENGTH 50 KSI	12 GAUGE
T11	CAP 42-INCH GUSSET 7	AASHTO M111 / ASTM A123 ASTM A36 MIN. STRENGTH 36 KSI, OR ASTM A529 MAX. STRENGTH 50 KSI, OR ASTM A572 MAX. STRENGTH 50 KSI, OR ASTM A709 MAX. STRENGTH 50 KSI, OR ASTM A992 MAX. STRENGTH 50 KSI	12 GAUGE
T12	CAP 42-INCH GUSSET 8	AASHTO M111 / ASTM A123 ASTM A36 MIN. STRENGTH 36 KSI, OR ASTM A529 MAX. STRENGTH 50 KSI, OR ASTM A572 MAX. STRENGTH 50 KSI, OR ASTM A709 MAX. STRENGTH 50 KSI, OR ASTM A992 MAX. STRENGTH 50 KSI	12 GAUGE
T13	CAP 42-INCH GUSSET 9	AASHTO M111 / ASTM A123 ASTM A36 MIN. STRENGTH 36 KSI, OR ASTM A529 MAX. STRENGTH 50 KSI, OR ASTM A572 MAX. STRENGTH 50 KSI, OR ASTM A709 MAX. STRENGTH 50 KSI, OR ASTM A992 MAX. STRENGTH 50 KSI	12 GAUGE
T14	CAP 42-INCH GUSSET 10	AASHTO M111 / ASTM A123 ASTM A36 MIN. STRENGTH 36 KSI, OR ASTM A529 MAX. STRENGTH 50 KSI, OR ASTM A572 MAX. STRENGTH 50 KSI, OR ASTM A709 MAX. STRENGTH 50 KSI, OR ASTM A992 MAX. STRENGTH 50 KSI	12 GAUGE
T15	CAP 42-INCH GUSSET 11	AASHTO M111 / ASTM A123 ASTM A36 MIN. STRENGTH 36 KSI, OR ASTM A529 MAX. STRENGTH 50 KSI, OR ASTM A572 MAX. STRENGTH 50 KSI, OR ASTM A709 MAX. STRENGTH 50 KSI, OR ASTM A992 MAX. STRENGTH 50 KSI	12 GAUGE
T16	CAP 42-INCH GUSSET 12	AASHTO M111 / ASTM A123 ASTM A36 MIN. STRENGTH 36 KSI, OR ASTM A529 MAX. STRENGTH 50 KSI, OR ASTM A572 MAX. STRENGTH 50 KSI, OR ASTM A709 MAX. STRENGTH 50 KSI, OR ASTM A992 MAX. STRENGTH 50 KSI	12 GAUGE
U1	GAP STIFFENER	AASHTO M111 / ASTM A123 ASTM A36 MIN. STRENGTH 36 KSI, OR ASTM A529 MAX. STRENGTH 50 KSI, OR ASTM A572 MAX. STRENGTH 50 KSI, OR ASTM A709 MAX. STRENGTH 50 KSI, OR ASTM A992 MAX. STRENGTH 50 KSI	
U2	GAP STIFFENER - CONNECTOR PLATE 1	AASHTO M111 / ASTM A123 ASTM A36 MIN. STRENGTH 36 KSI, OR ASTM A529 MAX. STRENGTH 50 KSI, OR ASTM A572 MAX. STRENGTH 50 KSI, OR ASTM A709 MAX. STRENGTH 50 KSI, OR ASTM A992 MAX. STRENGTH 50 KSI	
U3	GAP STIFFENER - CONNECTOR PLATE 2	AASHTO M111 / ASTM A123 ASTM A36 MIN. STRENGTH 36 KSI, OR ASTM A529 MAX. STRENGTH 50 KSI, OR ASTM A572 MAX. STRENGTH 50 KSI, OR ASTM A709 MAX. STRENGTH 50 KSI, OR ASTM A992 MAX. STRENGTH 50 KSI	

PART	DESCRIPTION	MATERIALS SPECIFICATIONS	NOTES
V1	THRIE BEAM RAIL TERMINAL MECHANICAL OR ADHESIVE ANCHOR	MINIMUM MECHANICAL OR ADHESIVE ANCHOR STRENGTH REQUIREMENTS ULTIMATE TENSILE LOAD 24.0 KIPS AND ULTIMATE SHEAR LOAD 21.5 KIPS. SEE 603.2 AND 603.3.1.2 OF THE WISCONSIN STANDARD SPECIFICATIONS FOR MORE INFORMATION ON ADHESIVE ANCHORS.	¾" DIA.
V2	GAP STIFFENER - BOLT - NUT	HOT DIP AASHTO M232 CLASS / ASTM A153 CLASS C / ASTM F2329 C O R MECHANICAL GALVANIZE TO AASHTO M298 CLASS 50 TYPE 1 / ASTM B695 CLASS 50 TYPE 1 UNC OVER TAP NUTS AS SPECIFIED IN AASHTO 291/ASTM A 563 HEAVY HEX HEAD ASTM A563DH OR SAE J995 GRADE 5	
W1	TOE PLATE	AASHTO M111/ASTM A123 ASTM A36 MIN STRENGTH 36 KSI, OR ASTM A529 MAX. STRENGTH 50 KSI, OR ASTM A572 MAX. STRENGTH 50 KSI, OR ASTM A709 MAX. STRENGTH 50 KSI, OR ASTM A992 MAX. STRENGTH 50 KSI	
X1	TOE PLATE - CONNECTION BOLT	HOT DIP AASHTO M232 CLASS / ASTM A153 CLASS C / ASTM F2329 C OR MECHANICAL GALVANIZE TO AASHTO M298 CLASS 55 TYPE 2 / ASTM B695 CLASS 55 TYPE 2 UNC HEAVY HEX HEAD OR AASTHO M180 HEAD, ASTM F3125 GRADE A325 TYPE 1 HEAVY HEX HEAD OR SAE J429 GRADE 5 HEAVY HEX HEAD / ASTM A449 TYPE 1 HEAVY HEX HEAD. BOLTS MAY BE FULLY THREADED. PROVIDE ENOUGH THREADING FOR PROPER TIGHTENING OF BOLT.	¾" DIA.
X2	TOE PLATE - CONNECTION BOLT - WASHER	HOT DIP AASHTO M232 CLASS / ASTM A153 CLASS C / ASTM F2329 C OR MECHANICAL GALVANIZE TO AASHTO M298 CLASS 55 TYPE 2 / ASTM B695 CLASS 55 TYPE 2 F436 TYPE 1 (HARDEN WASHER ONLY)	
X3	TOE PLATE - CONNECTION BOLT - NUT	HOT DIP AASHTO M232 CLASS / ASTM A153 CLASS C / ASTM F2329 C OR MECHANICAL GALVANIZE TO AASHTO M298 CLASS 55 TYPE 2 / ASTM B695 CLASS 55 UNC OVER TAP NUTS AS SPECIFIED IN AASHTO 291 / ASTM A 563 HEAVY HEX HEAD ASTM A563DH OR SAE J995 GRADE 5	

6

6

SDD 14B07-16n

SDD 14B07-16n

CONCRETE BARRIER TEMPORARY PRECAST, 12' - 6"	
STATE OF WISCONSIN DEPARTMENT OF TRANSPORTATION	
APPROVED February 2023 DATE	/s/ Rodney Taylor ROADWAY STANDARDS DEVELOPMENT UNIT SUPERVISOR
FHWA	

Concrete Barrier Temporary Precast

References:[Standard Spec 603](#)[Standard Spec 614](#)[FDM 11-45-50](#)[FDM 11-45-30](#)

MwRSF TRP-03-64-96

MwRSF TRP-03-113-03

MwRSF TRP-03-134-03

MwRSF TRP-03-180-06

MwRSF TRP-03-208-10

MwRSF TRP-03-264-12

MwRSF TRP-03-337-17

MwRSF TRP-03-387a-21

MwRSF TRP-03-387b-20

Bid items associated with this drawing:

<u>ITEM NUMBER</u>	<u>DESCRIPTION</u>	<u>UNIT</u>
603.8000	Concrete Barrier Temporary Precast Delivered.....	LF
603.8125	Concrete Barrier Temporary Precast Installed	LF
603.8500	Anchoring Concrete Barrier Temporary Precast.....	LF
603.8505	Anchoring Concrete Barrier Temporary Precast on Bridge Decks	LF
614.0700	Sand Barrel Array	EACH
614.0905	Crash Cushions Temporary.....	EACH

Standardized Special Provisions associated with this drawing:

<u>STSP NUMBER</u>	<u>TITLE</u>
NONE	

Other SDDs associated with this drawing:

SDD 14B8	Crash Cushion/Sand Barrel Array and Other Temporary Barrier Layout Details (Required)
SDD 15D3	Traffic Control, Lane Closure, Speeds Greater than 40 M.P.H. with Barrier
SDD 15D5	Traffic Control, Single Lane Crossover Entrance with Barrier
SDD 15D10	Traffic Control, Single Lane Crossover Exit with Barrier
SDD 15D32	Traffic Control, One Lane Road Stop Condition
SDD 15D33	Traffic Control, One Lane Road with Temporary Signals

Design Notes:

Each section of the barrier weighs approximately 2.7 tons. The mass of the barrier and the friction between the barrier and the underlying surface tend to limit lateral and overturning movements of the barrier when struck by an errant vehicle.

Freestanding temporary concrete barriers are often placed adjacent to drop offs (e.g. the edge of a bridge deck during deck replacement, repair, maintenance, or reconstruction). When temporary concrete barriers are used on the edge of a bridge deck, or other drop-offs greater than 2 feet, the risk of the entire line of barriers falling off of the deck or drop-off, requires that deflection of the barrier be limited to the gap between the backside of the barrier and the edge of the bridge deck or drop-off. Anchor the traffic side of the concrete barrier temporary if the distance to a 2-foot or greater drop off that is steeper than 3 H : 1 V, for example the edge of a bridge deck or a drop off at the edge of pavement, is less than 4 feet from the side of the barrier closest to the drop off and the posted speed is 45 mph or greater, or if the distance to a 2-foot or greater drop off that is steeper than 3 H : 1 V, for example the edge of a bridge deck or a drop off at the edge of pavement, is less than 2 feet from the side of the barrier closest to the drop off and the posted speed is 40 mph or less. Locate the line of anchored barrier on the deck such that the gap between the backside of the barrier and the bridge deck is at least 6-inches.

Place temporary barrier on paved surface that is no steeper than 10:1. Provide approach grades to the temporary barrier that are 10:1 or flatter. Barrier may not operate as intended or errant vehicle may not engage barrier correctly if grading is not provided.

Use the following methods to treat the blunt end(s) of the barrier:

- a) Flare approach end of the barrier away from the traffic lane.
- b) Use an approved crash cushion or sand barrel array to terminate the temporary barrier installation.
- c) Overlap barriers (see SDD 14B8)
- d) Connect temporary barrier to permanent barrier (see SDD 14B8)

When posted speed is over 30 mph, use temporary crash cushion or sand barrier array (see Approved Products List, FDM 11-45-30.4.4.1.3). Provide individual construction drawing detailing the installation crash cushions and sand barrel arrays.

If a freestanding temporary concrete barrier system is connected to a rigid barrier, such as a concrete bridge parapet, there needs to be a transition in the relative stiffness and deflection of the systems. Otherwise, there is a serious potential for pocketing of the barrier, snagging of the wheels or other vehicle components on the rigid barrier, as well as problems with vehicle stability. SDD has been updated to reflect this change.

The tie-down system is not recommended for use on bridge decks with an asphalt overlay. The asphalt overlay may induce high bending moments in the anchor bolts at the interface between the asphalt layer and the concrete surface, causing failure at much lower dynamic loads. Coordinate with BPD.

Where an expansion joint falls between two anchor bolts of a single barrier, one anchor bolt adjacent to the joint may be omitted to allow for free movement of the slab underneath. Provide a transition section whenever a freestanding section is connected to an anchored section of barriers. Length of freestanding barrier influences the amount of room behind the barrier.

Anchoring temporary barrier on bridge decks may require bolting completely through the deck. Avoid placing anchored temporary barrier over girder and beams on bridge decks. Review epoxy anchoring requirements and barrier locations on structures during the initial design of the traffic control plan with structural engineer.

No other methods to anchor temporary barrier are to be used without preapproval by BPD. No other bid items, special provisions, or detail drawings are to be used for temporary barrier without preapproval of BPD.

Review payment of concrete barrier bid items after traffic control plans are developed. Staging of the plan, location of barrier and other factors can influence how temporary barrier is paid. Some general considerations on payment items are:

- Pay Concrete Barrier Temporary Precast Delivered and Concrete Barrier Temporary Precast Installed when barrier is initially installed on a project
- Barrier is a hazard. Remove temporary barrier from the right of way that is no longer needed to shield hazards or being used to delineate between phases (e.g. over a winter shut down the barrier is not needed to shield hazards or delineate traffic). If temporary barrier is to remain within right of way when not shielding hazards or providing delineation, provide documentation in DSR.
- Pay Concrete Barrier Temporary Precast Delivered and Concrete Barrier Temporary Precast Installed if barriers are required to move across a live lane of travel in the next traffic control phase (e.g. Don't swing barrier over live lanes. Have contractor load barrier on to a truck).
- Pay Concrete Barrier Temporary Precast Installed when shifting a barrier laterally. Do not pay for a delivery unless the lateral shift is a significant distance (e.g. if it needs to be loaded into a truck).
- Pay Concrete Barrier Temporary Precast Delivered and Concrete Barrier Temporary Precast Installed if barrier is moved longitudinally (e.g. up or down station by putting it on a truck).

Temporary barrier is not intended for permanent applications. Contact BPD if intending on using temporary barrier for permanent applications.

Portable concrete barrier gap thrie beam cover is designed for tangent free standing temporary barrier.

Contact Person:

Erik Emerson (608) 266-2842