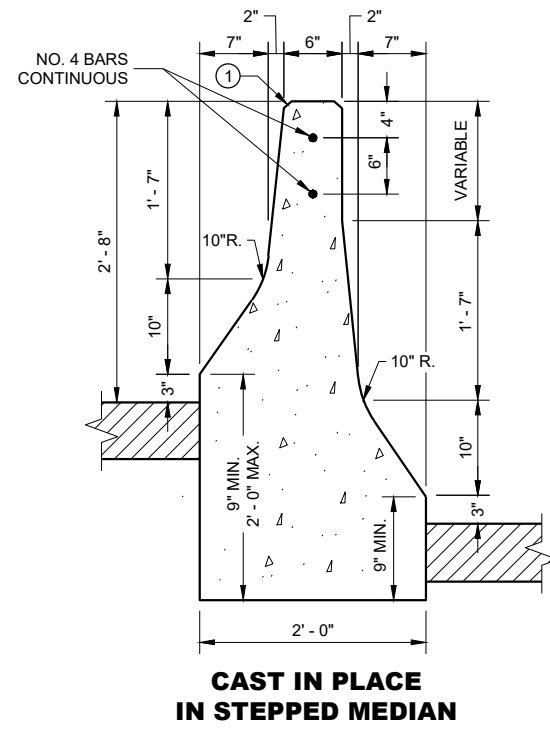
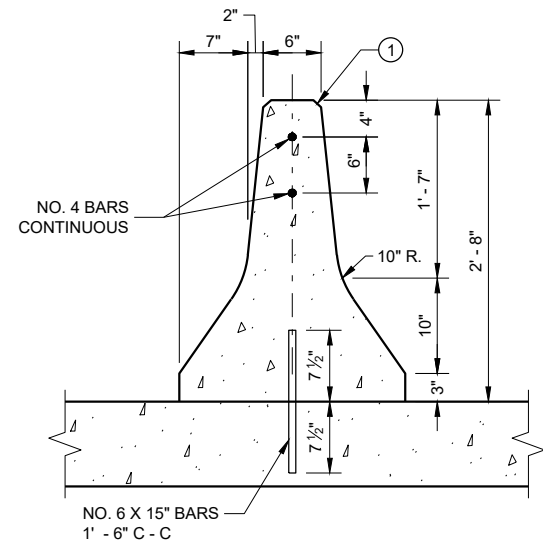


CAST IN PLACE



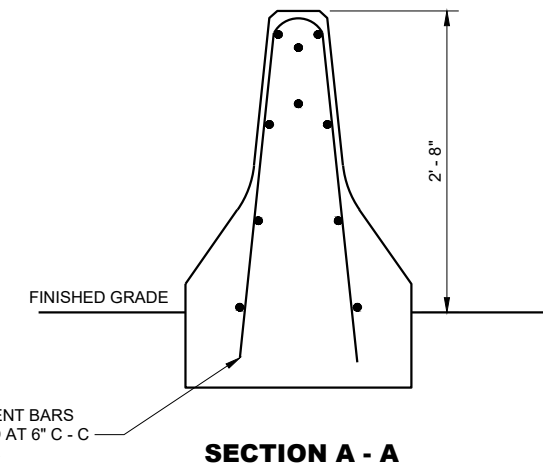
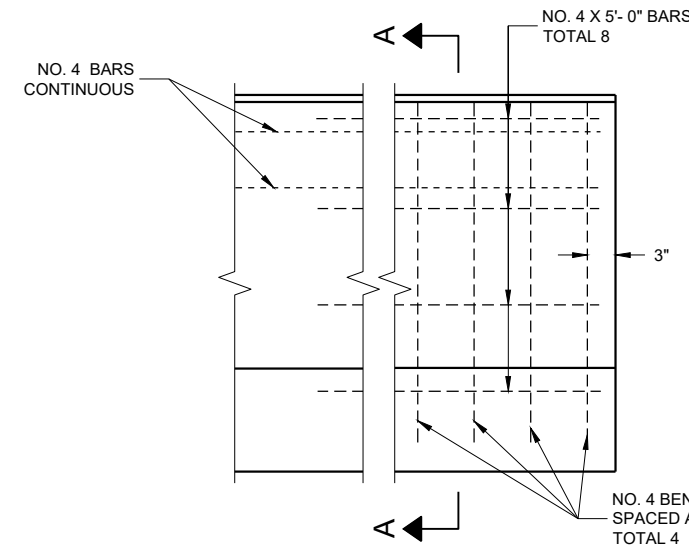
**CAST IN PLACE
IN STEPPED MEDIAN**

CONCRETE MEDIAN BARRIER WITH INTEGRAL FOOTING



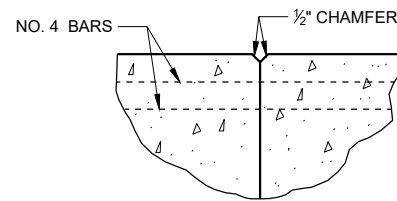
CAST IN PLACE

**CONCRETE MEDIAN BARRIER
ON NEW OR EXISTING RIGID BASE**

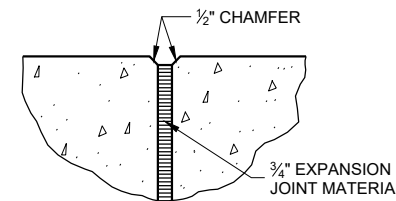


SECTION A - A

**STEM REINFORCEMENT AT BARRIER END^④
(BARRIER WITH FOOTING IS SHOWN)**



CONSTRUCTION JOINT^③



EXPANSION JOINT^②

JOINT DETAILS

GENERAL NOTES

ALL BAR STEEL REINFORCEMENT SHALL BE EPOXY COATED IN CONFORMANCE WITH SUBSECTION 505.2.4 OF THE STANDARD SPECIFICATIONS.

SPLICES OF LONGITUDINAL BARS SHALL BE MADE WITH THE BARS LAPPED AT LEAST 18 INCHES AND FIRMLY TIED OR FASTENED TOGETHER.

ALL BAR STEEL REINFORCEMENT SHALL BE EMBEDDED AT LEAST 2 INCHES.

NO. 6 BARS TO ANCHOR THE BARRIERS SHALL BE EITHER INSTALLED IN THE SUPPORTING SURFACE WHEN PLACED, OR IN DRILLED HOLES USING AN EPOXY RESIN APPROVED BY THE ENGINEER.

4000 PSI AIR ENTRAINMENT PER STANDARD SPECIFICATION 501

- ① 3/4" BEVEL OR 1" RADIUS (TYPICAL).
- ② EXPANSION JOINTS SHALL BE PLACED AT EXISTING EXPANSION JOINTS IN THE PAVEMENT AND AT STRUCTURES.
- ③ NO. 4 BARS SHALL BE CONTINUED THROUGH CONSTRUCTION JOINTS.
- ④ STEM REINFORCEMENT REQUIRED AT EXPANSION JOINTS AND WHERE CONCRETE BARRIER IS TERMINATED.

CONCRETE BARRIER (DOUBLE FACED)	
STATE OF WISCONSIN DEPARTMENT OF TRANSPORTATION	
APPROVED November 2022 DATE	/S/ Rodney Taylor ROADWAY STANDARDS DEVELOPMENT ENGINEER
FHWA	

*Concrete Barrier (Double Faced)***References:**

NONE

Bid items associated with this drawing:

<u>ITEM NUMBER</u>	<u>DESCRIPTION</u>	<u>UNIT</u>
NONE		

Standardized Special Provisions associated with this drawing:

<u>STSP NUMBER</u>	<u>TITLE</u>
NONE	

Other SDDs associated with this drawing:

NONE

Design Notes:

After August 2011, new installations of concrete barrier are to use single slope barrier. This SDD may be used to retro-fit existing NJ concrete barrier. See FDM 11-45-30 for more information.

Contact Person:

Erik Emerson (608) 266-2842