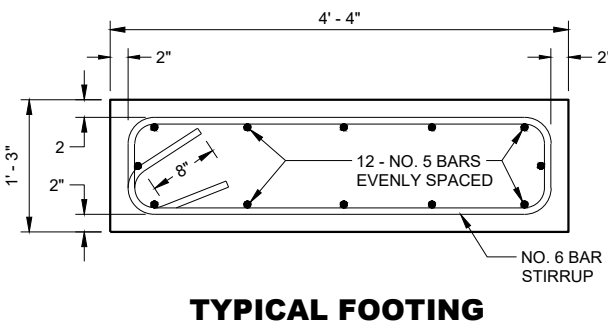
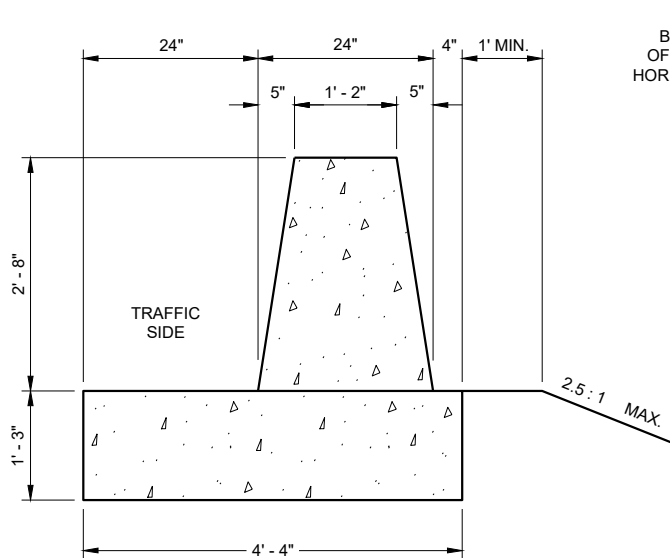


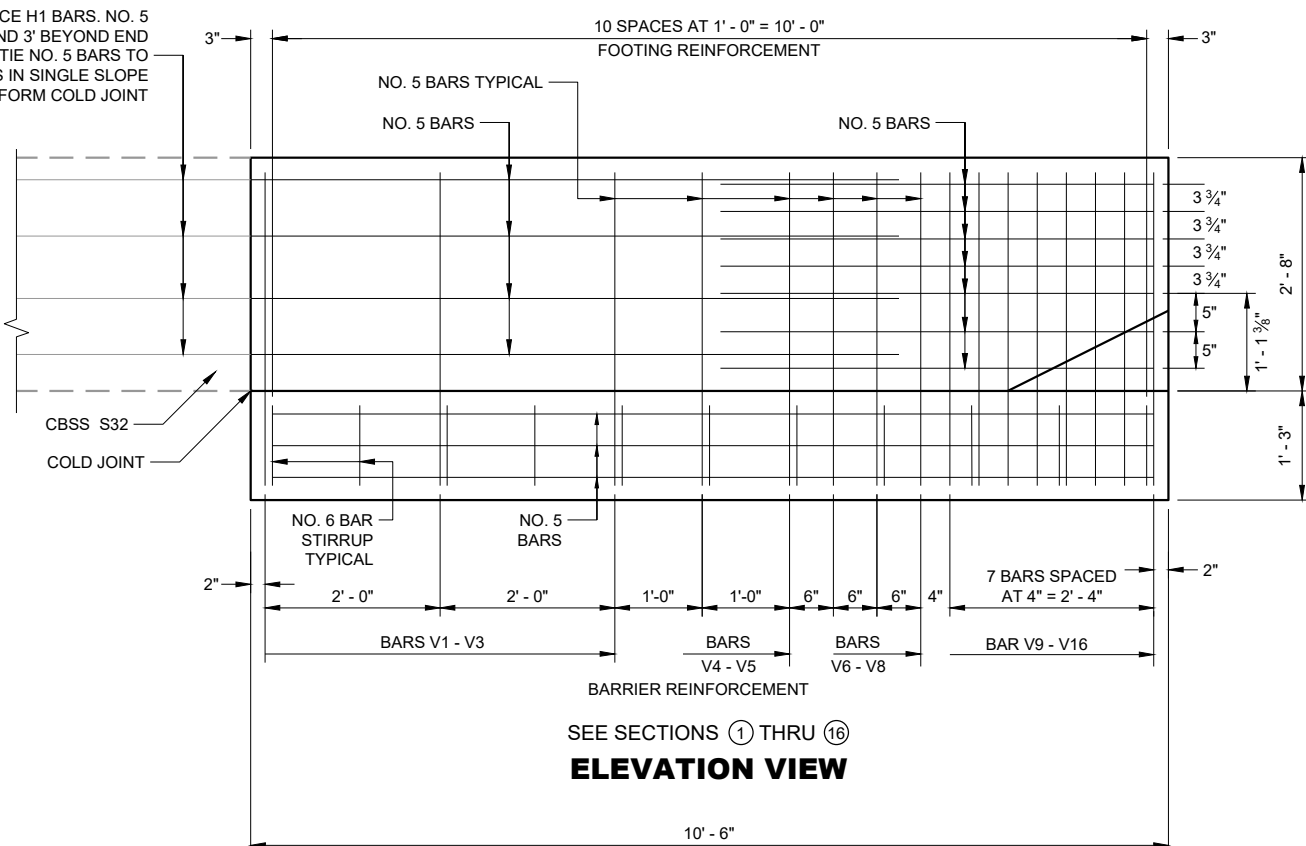
SDD 14B33-a Concrete Barrier Single Slope 32" Thrie Beam Anchor - Barrier Layout



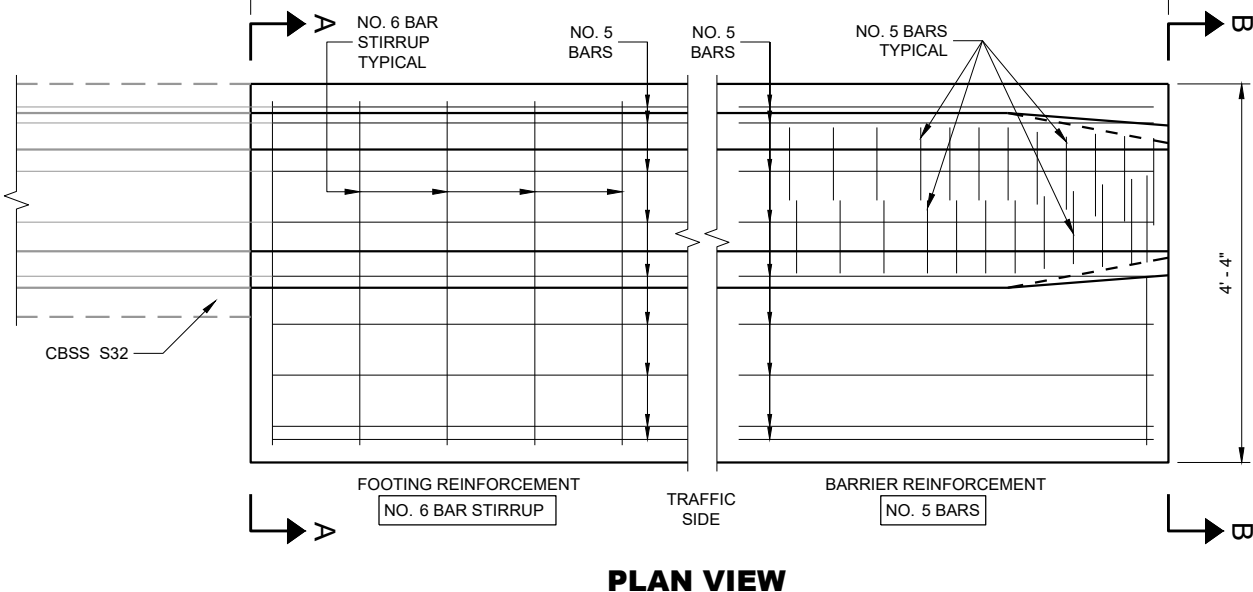
GENERAL NOTES

- CONSTRUCT PER STANDARD SPECIFICATION 603.
- SPLICES OF LONGITUDINAL BARS TO BE 2' LONG AND FIRMLY TIED AND FASTENED TOGETHER UNLESS OTHERWISE NOTED.
- 4000 PSI CONCRETE AIR ENTRAINMENT PER STANDARD SPECIFICATIONS SECTION 501.
- USE 3/4" BEVEL OR 1" RADIUS ON ALL EXPOSED SHARP EDGES UNLESS OTHERWISE NOTED.
- THRIE BEAM ANCHOR INCIDENTAL TO CONCRETE BARRIER ITEM.
- INSTALL SCHEDULE 40 PVC PIPE 1" DIAMETER AT LOCATIONS INDICATED.
- EXTEND PVC PIPE COMPLETELY THROUGH BARRIER.
- CUT ENDS OF PVC PIPE FLUSH WITH FINISHED FACE OF BARRIER.
- THE NUMBER IN BAR DESIGNATION REPRESENTS THE BARS LOCATION.
- 2" CLEAR COVER TYPICAL.

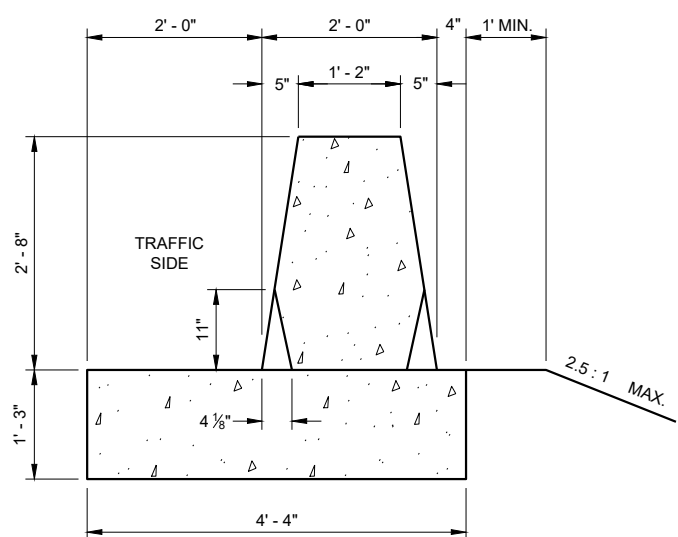
EVENLY SPACE H1 BARS. NO. 5 BARS TO EXTEND 3' BEYOND END OF TRANSITION. TIE NO. 5 BARS TO HORIZONTAL BARS IN SINGLE SLOPE BARRIER TO FORM COLD JOINT



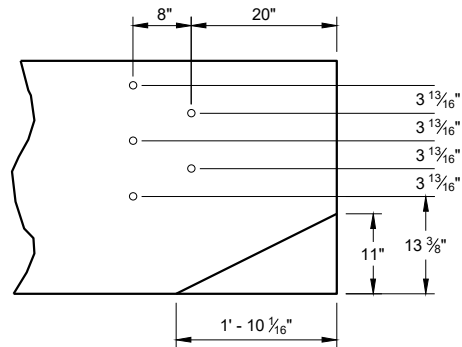
SEE SECTIONS (1) THRU (16) ELEVATION VIEW



PLAN VIEW



SECTION B - B



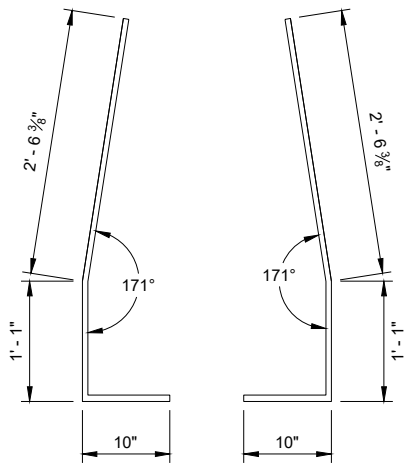
PVC PIPE LOCATIONS

**CONCRETE BARRIER
SINGLE SLOPE 32"
THRIE BEAM ANCHOR**

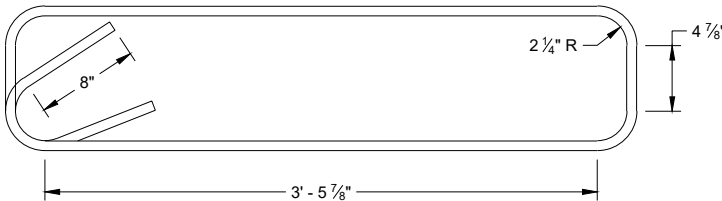
STATE OF WISCONSIN
DEPARTMENT OF TRANSPORTATION



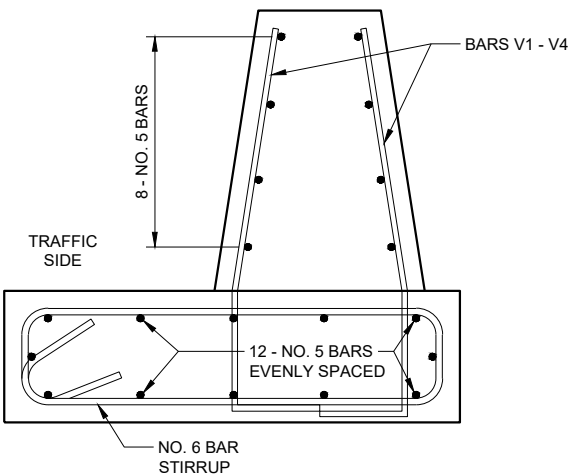
SDD 14B33-b Concrete Barrier Single Slope 32" Thrie Beam Anchor - Steel Layout #1



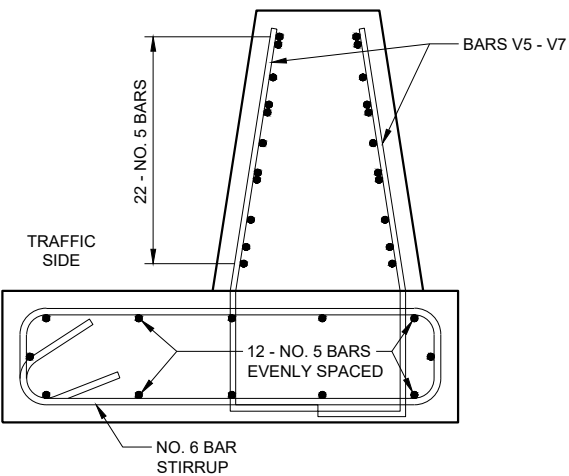
**BAR BENDING DETAIL
BARS 1 - 11**



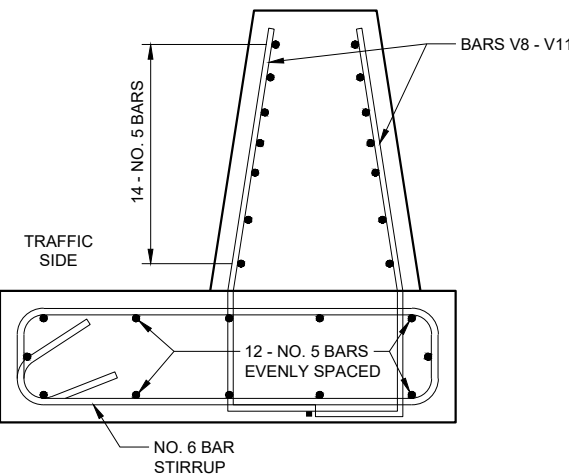
**STIRRUP BAR
BENDING DETAIL**



**BAR DETAIL
SECTIONS 1 - 4**



**BAR DETAIL
SECTIONS 5 - 7**



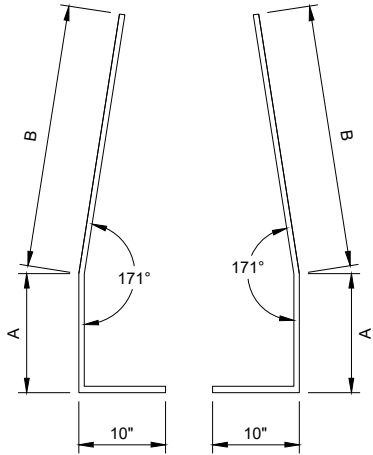
**BAR DETAIL
SECTIONS 8 - 11**

**CONCRETE BARRIER
SINGLE SLOPE 32"
THRIE BEAM ANCHOR**

STATE OF WISCONSIN
DEPARTMENT OF TRANSPORTATION

**BAR CHART
BAR POSITIONS
12 - 13**

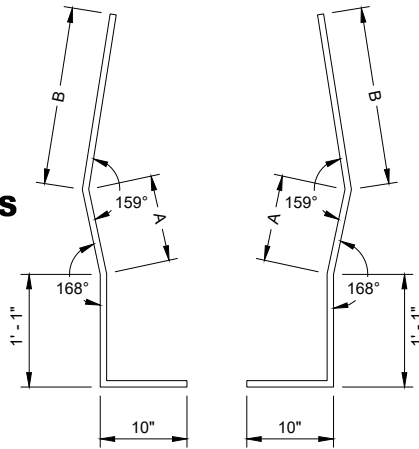
BAR	A	B
V12	1' - 3"	2' - 6"
V13	1' - 8"	2' - 1 1/2"



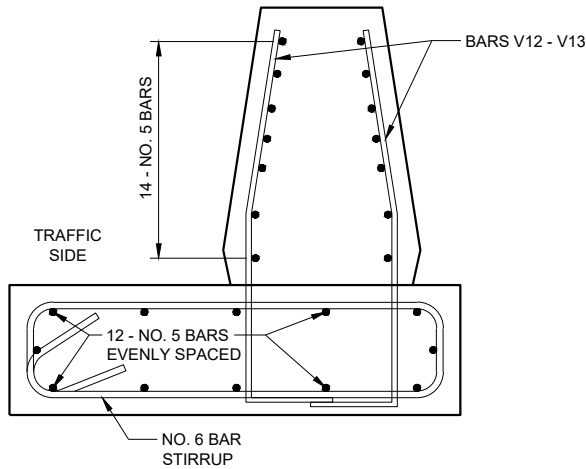
**BAR BENDING DETAIL
SECTIONS V12- V13**

**BAR CHART
BAR POSITIONS
14 - 16**

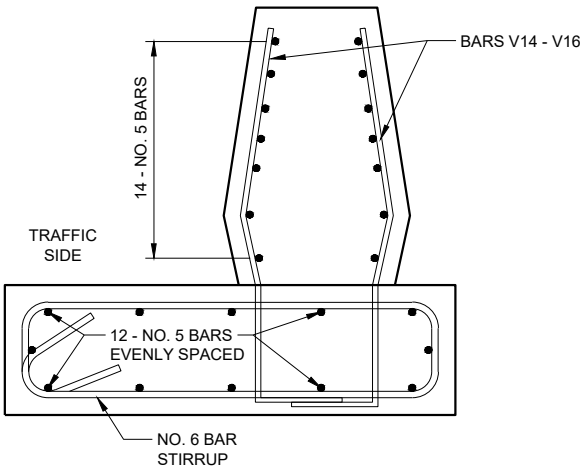
BAR	A	B
V14	6"	2' - 1"
V15	8"	1' - 11"
V16	10"	1' - 8 1/2"



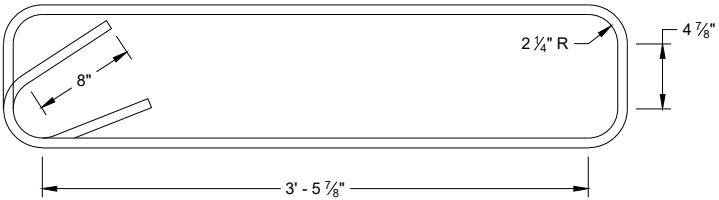
**BAR BENDING DETAIL
SECTIONS V14 - V16**



**BAR DETAIL
SECTIONS 12 - 13**



**BAR DETAIL
SECTIONS 14 - 16**



**STIRRUP BAR
BENDING DETAIL**

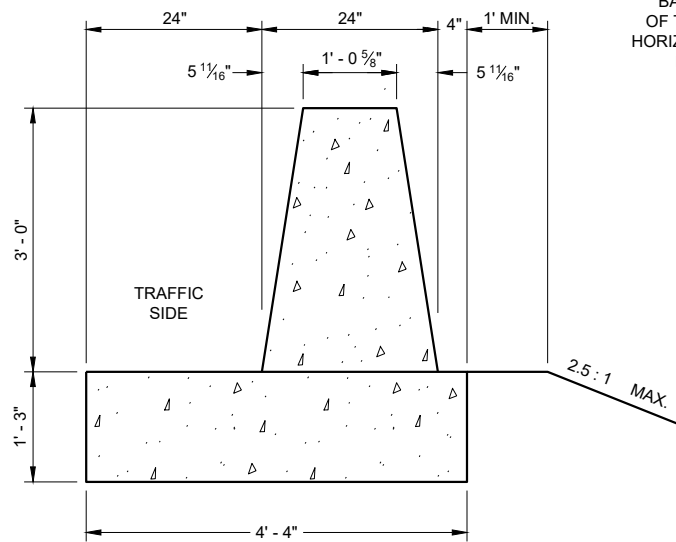
**CONCRETE BARRIER
SINGLE SLOPE 32"
THRIE BEAM ANCHOR**

STATE OF WISCONSIN
DEPARTMENT OF TRANSPORTATION

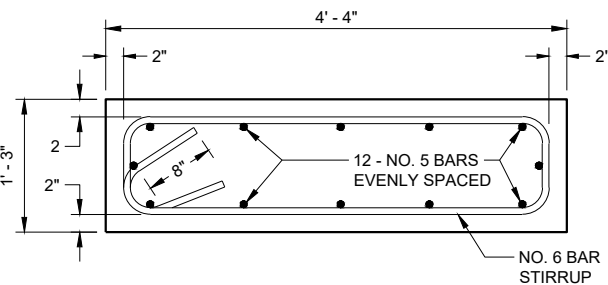
APPROVED
February 2020
DATE /S/ Rodney Taylor
ROADWAY STANDARDS DEVELOPMENT
ENGINEER

FHWA

SDD 14B33-d Concrete Barrier Single Slope 36" Thrie Beam Anchor - Barrier Layout



SECTION A - A

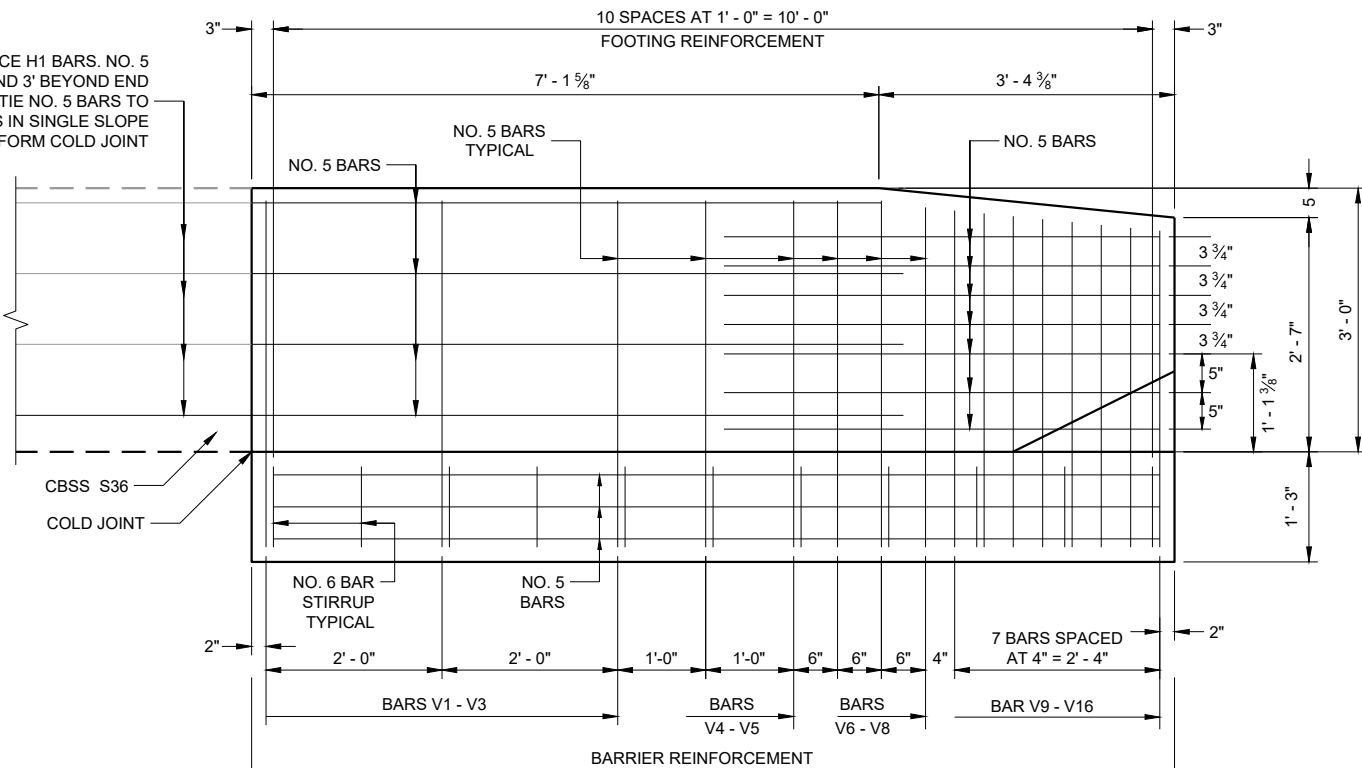


TYPICAL FOOTING

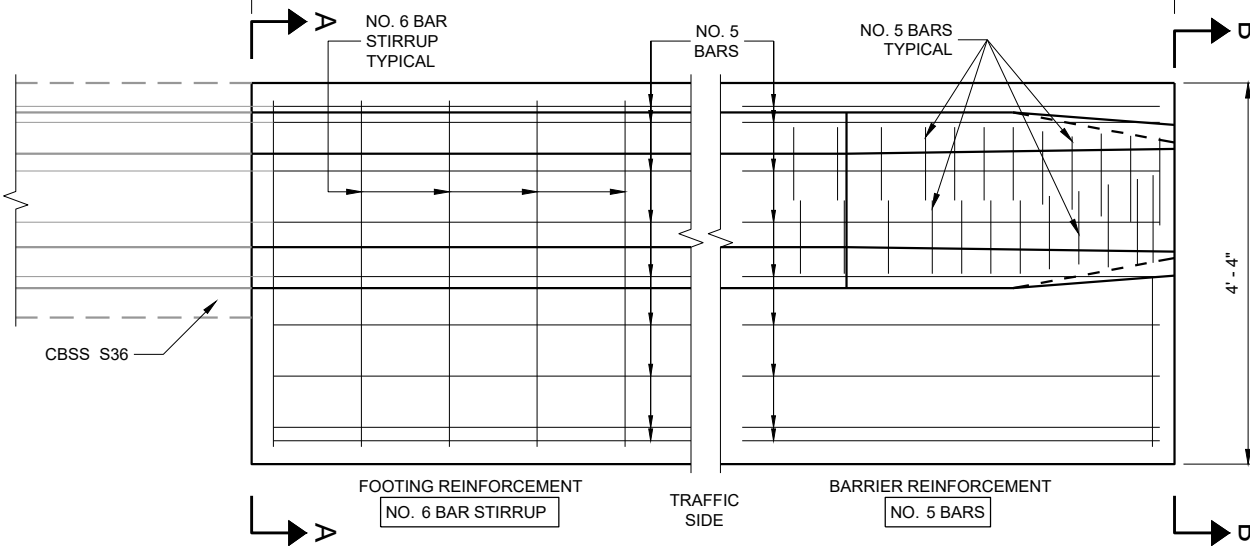
GENERAL NOTES

- CONSTRUCT PER STANDARD SPECIFICATION 603.
- SPLICES OF LONGITUDINAL BARS TO BE 2' LONG AND FIRMLY TIED AND FASTENED TOGETHER UNLESS OTHERWISE NOTED.
- 4000 PSI CONCRETE AIR ENTRAINMENT PER STANDARD SPECIFICATIONS SECTION 501.
- USE 3/4" BEVEL OR 1" RADIUS ON ALL EXPOSED SHARP EDGES UNLESS OTHERWISE NOTED.
- THRIE BEAM ANCHOR INCIDENTAL TO CONCRETE BARRIER ITEM.
- INSTALL SCHEDULE 40 PVC PIPE 1" DIAMETER AT LOCATIONS INDICATED.
- EXTEND PVC PIPE COMPLETELY THROUGH BARRIER.
- CUT ENDS OF PVC PIPE FLUSH WITH FINISHED FACE OF BARRIER.
- THE NUMBER IN BAR DESIGNATION REPRESENTS THE BARS LOCATION.
- 2" CLEAR COVER TYPICAL.

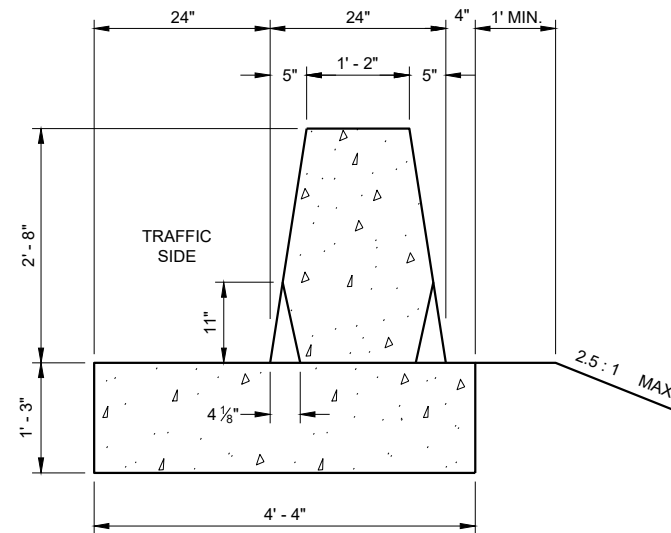
EVENLY SPACE H1 BARS. NO. 5 BARS TO EXTEND 3' BEYOND END OF TRANSITION. TIE NO. 5 BARS TO HORIZONTAL BARS IN SINGLE SLOPE BARRIER TO FORM COLD JOINT



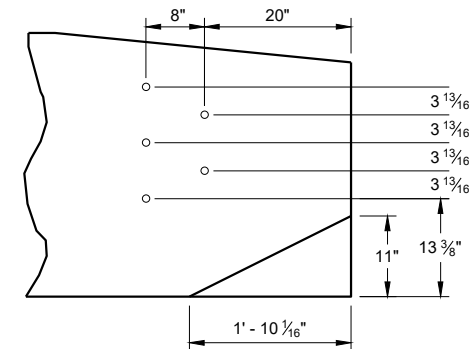
ELEVATION VIEW



PLAN VIEW



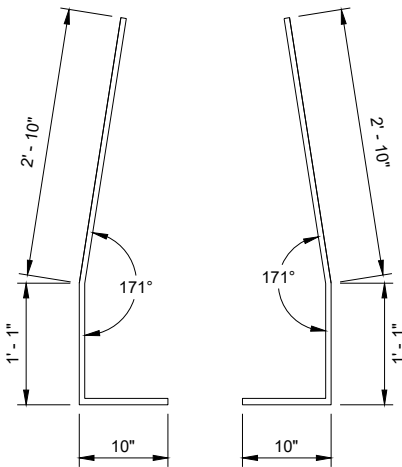
SECTION B - B



PVC PIPE LOCATIONS

**CONCRETE BARRIER
SINGLE SLOPE 36"
THRIE BEAM ANCHOR**

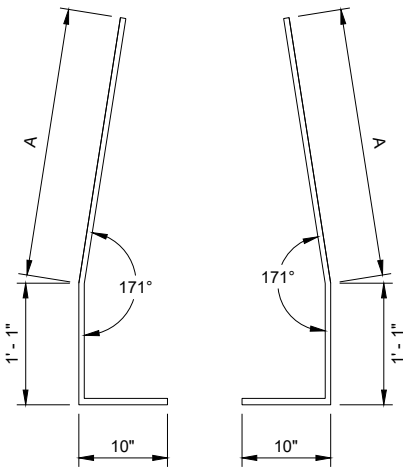
STATE OF WISCONSIN
DEPARTMENT OF TRANSPORTATION



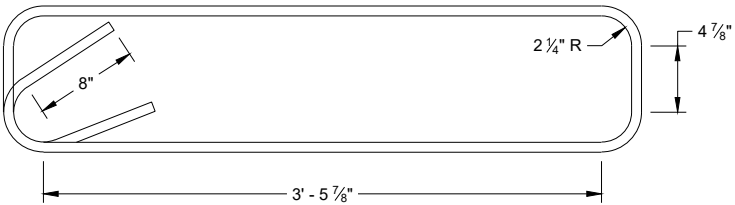
BAR BENDING DETAIL
SECTIONS V1- V6

BAR CHART
BAR POSITIONS
7 - 11

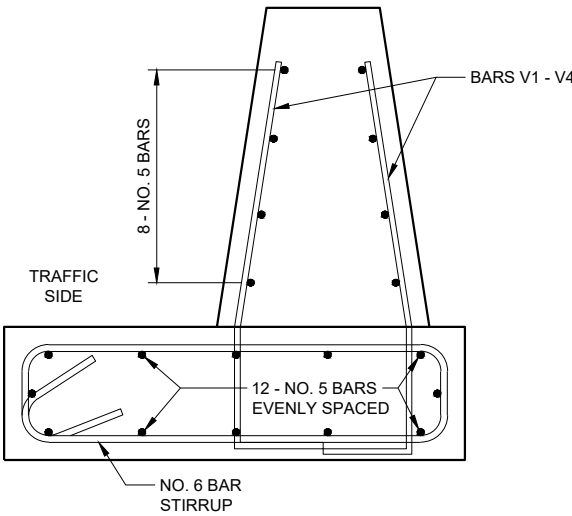
BAR	A
V7	2' - 10 ¼"
V8	2' - 9 ¾"
V9	2' - 9 ¼"
V10	2' - 9"
V11	2' - 8 ½"



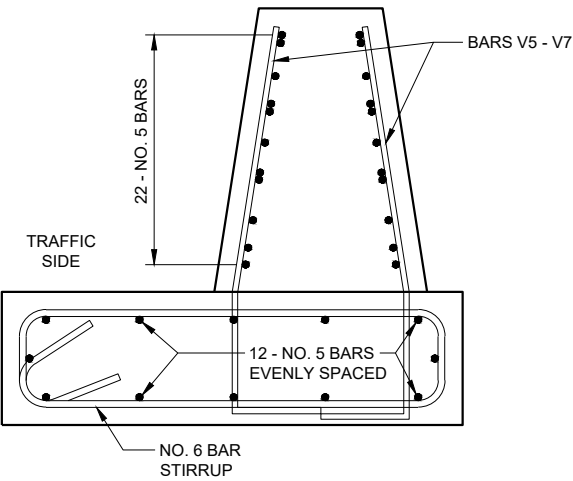
BAR BENDING DETAIL
SECTIONS V7- V11



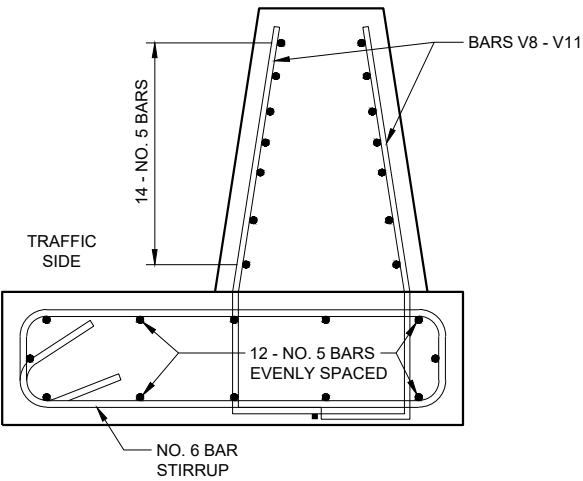
STIRRUP BAR
BENDING DETAIL



BAR DETAIL
SECTIONS 1 - 4



BAR DETAIL
SECTIONS 5 - 7



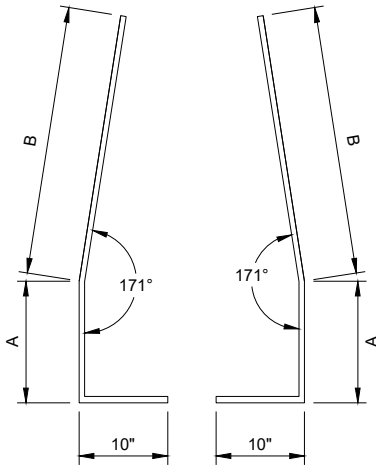
BAR DETAIL
SECTIONS 8 - 11

CONCRETE BARRIER
SINGLE SLOPE 36"
THRIE BEAM ANCHOR

STATE OF WISCONSIN
DEPARTMENT OF TRANSPORTATION

BAR CHART BAR POSITIONS 12 - 13

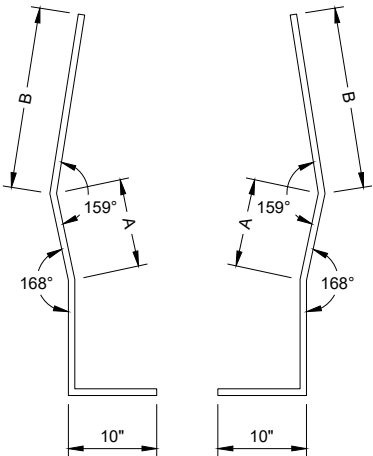
BAR	A	B
V12	1' - 3"	2' - 6"
V13	1' - 8"	2' - 1 1/2"



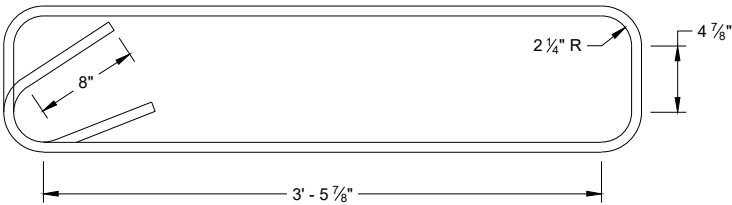
**BAR BENDING DETAIL
SECTIONS V12 - V13**

BAR CHART BAR POSITIONS 14 - 16

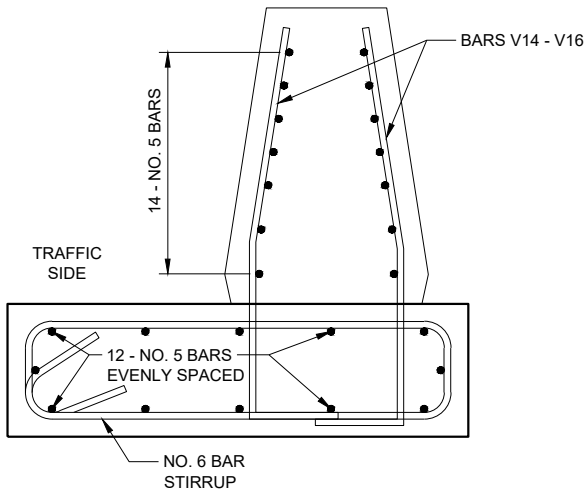
BAR	A	B
V14	6"	2' - 1"
V15	8"	1' - 11"
V16	10"	1' - 8 1/2"



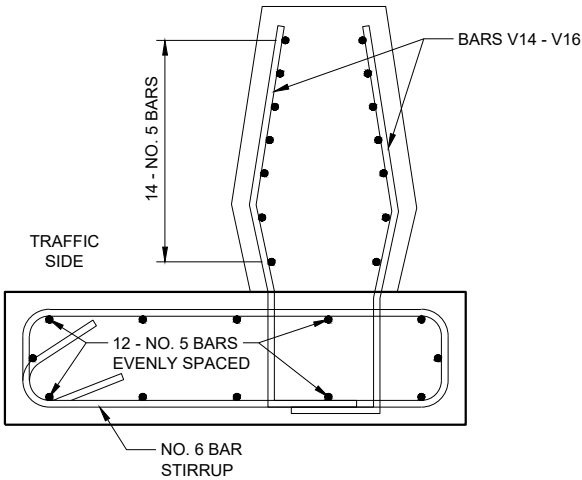
**BAR BENDING DETAIL
SECTIONS V14 - V16**



**STIRRUP BAR
BENDING DETAIL**



**BAR DETAIL
SECTIONS 12 - 13**



**BAR DETAIL
SECTIONS 14 - 16**

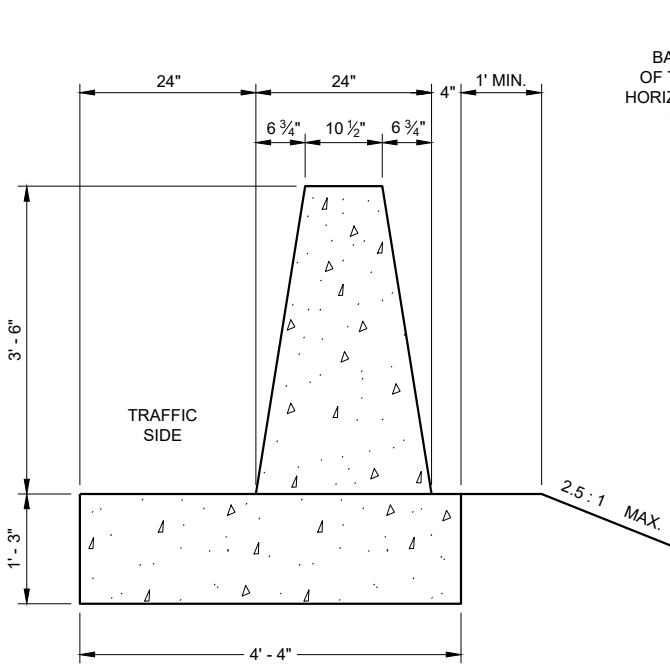
CONCRETE BARRIER SINGLE SLOPE 36" THRIE BEAM ANCHOR

STATE OF WISCONSIN
DEPARTMENT OF TRANSPORTATION

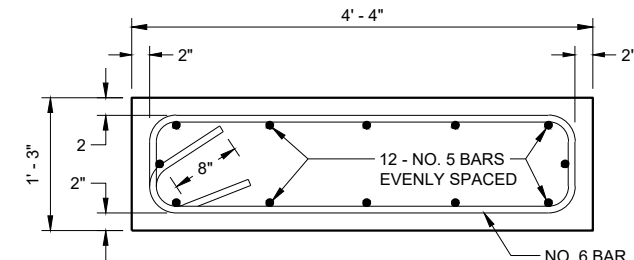
APPROVED
February 2020
DATE /S/ Rodney Taylor
ROADWAY STANDARDS DEVELOPMENT
ENGINEER

FHWA

SDD 14B33-g Concrete Barrier Single Slope 42" Thrie Beam Anchor - Barrier Layout



SECTION A - A

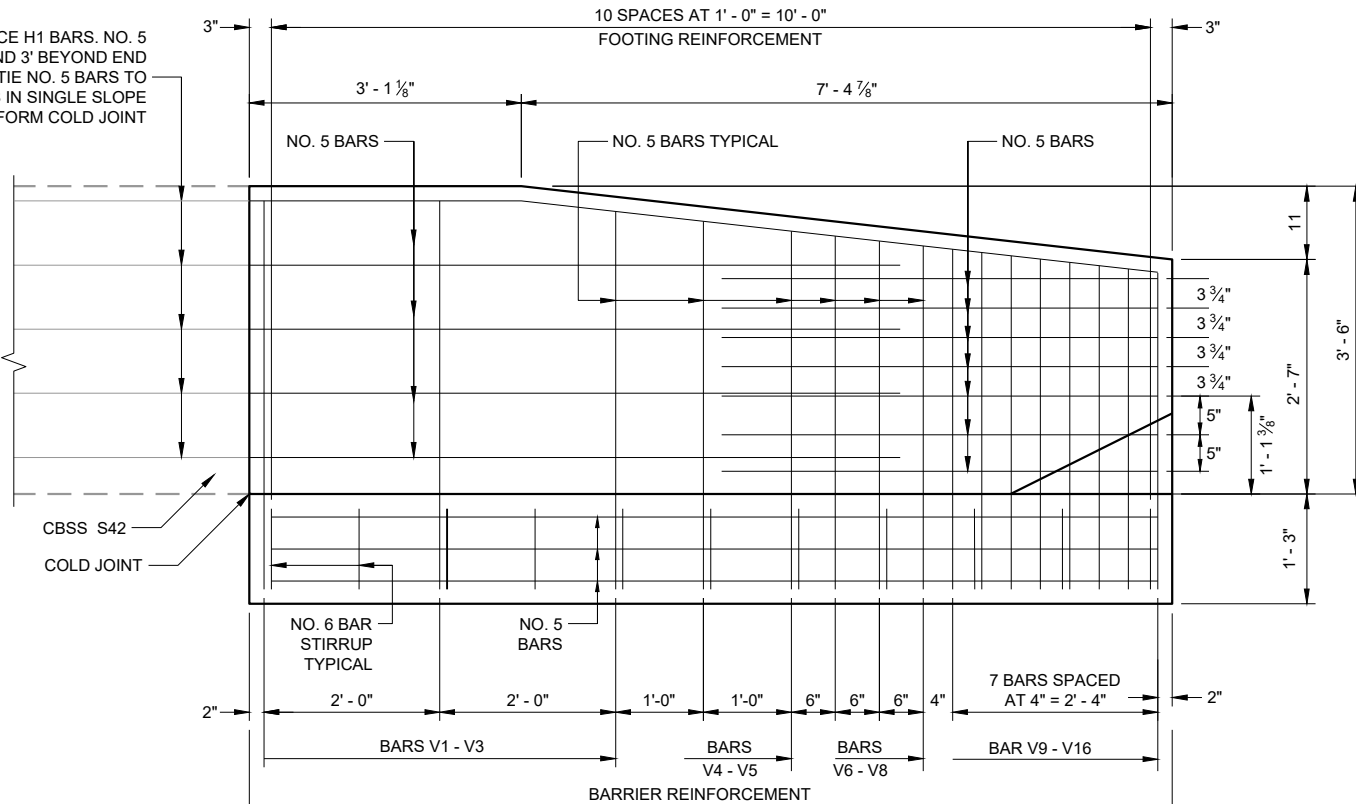


TYPICAL FOOTING

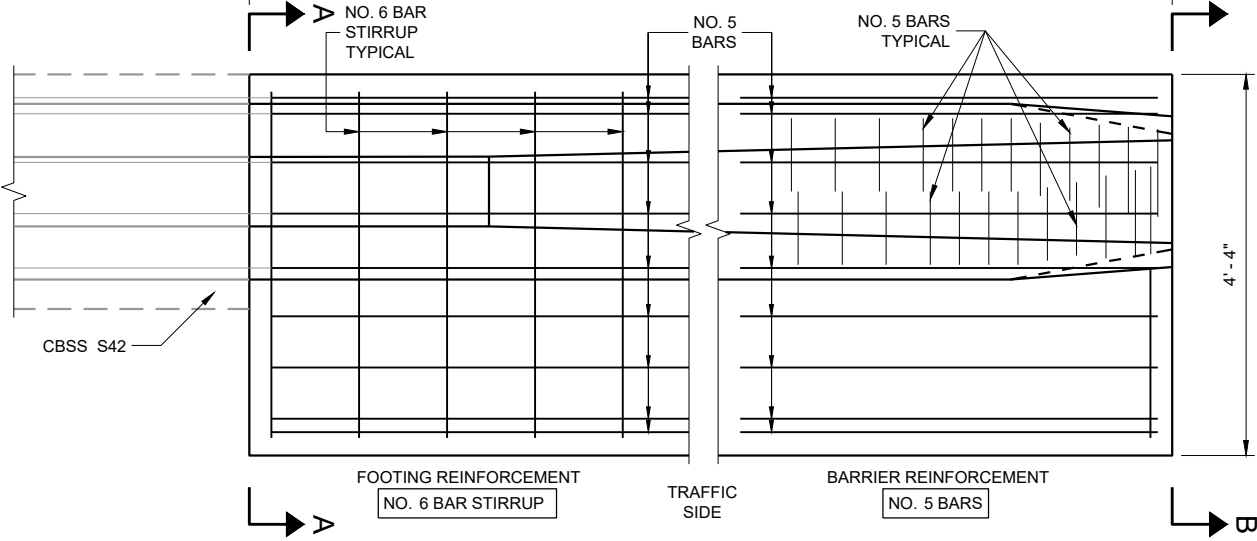
GENERAL NOTES

- CONSTRUCT PER STANDARD SPECIFICATION 603.
- SPLICES OF LONGITUDINAL BARS TO BE 2' LONG AND FIRMLY TIED AND FASTENED TOGETHER UNLESS OTHERWISE NOTED.
- 4000 PSI CONCRETE AIR ENTRAINMENT PER STANDARD SPECIFICATIONS SECTION 501.
- USE 3/4" BEVEL OR 1" RADIUS ON ALL EXPOSED SHARP EDGES UNLESS OTHERWISE NOTED.
- THRIE BEAM ANCHOR INCIDENTAL TO CONCRETE BARRIER ITEM.
- INSTALL SCHEDULE 40 PVC PIPE 1" DIAMETER AT LOCATIONS INDICATED.
- EXTEND PVC PIPE COMPLETELY THROUGH BARRIER.
- CUT ENDS OF PVC PIPE FLUSH WITH FINISHED FACE OF BARRIER.
- THE NUMBER IN BAR DESIGNATION REPRESENTS THE BARS LOCATION.
- 2" CLEAR COVER TYPICAL.

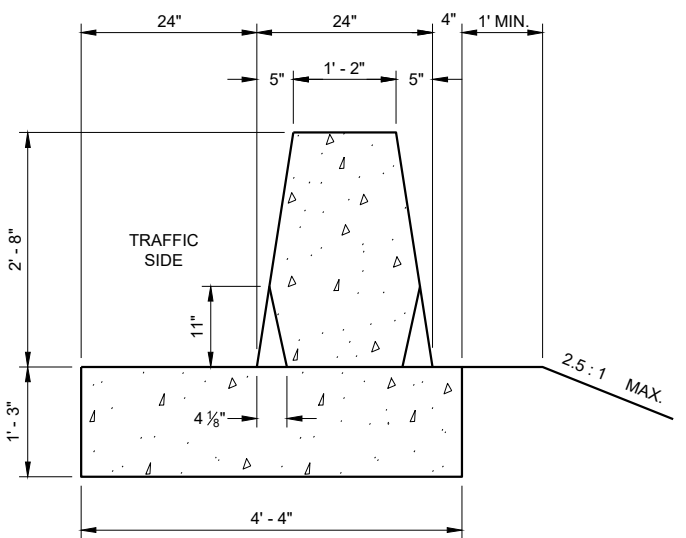
EVENLY SPACE H1 BARS. NO. 5 BARS TO EXTEND 3' BEYOND END OF TRANSITION. TIE NO. 5 BARS TO HORIZONTAL BARS IN SINGLE SLOPE BARRIER TO FORM COLD JOINT



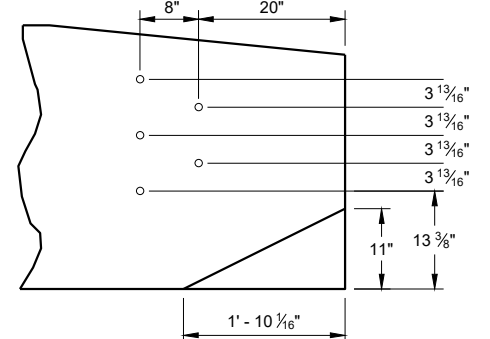
ELEVATION VIEW



PLAN VIEW



SECTION B - B



PVC PIPE LOCATIONS

**CONCRETE BARRIER
SINGLE SLOPE 42"
THRIE BEAM ANCHOR**

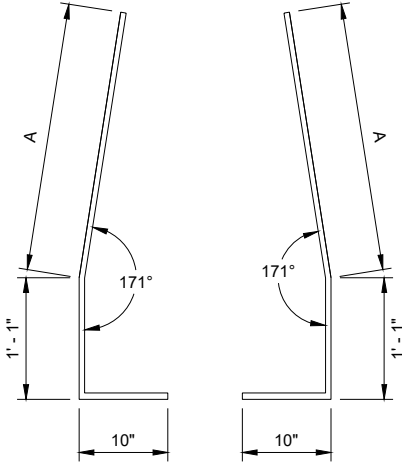
STATE OF WISCONSIN
DEPARTMENT OF TRANSPORTATION



SDD 14B33-h Concrete Barrier Single Slope 42" Thrie Beam Anchor - Steel Layout

BAR CHART
BAR POSITIONS
1 - 11

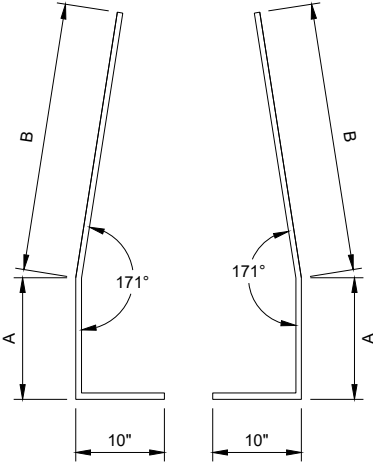
BAR	A
V1	3' - 4 1/2"
V2	3' - 4 1/2"
V3	3' - 2 1/2"
V4	3' - 1"
V5	2' - 11 1/2"
V6	2' - 11"
V7	2' - 10 1/2"
V8	2' - 9 1/2"
V9	2' - 9"
V10	2' - 8 1/2"
V11	2' - 8"



BAR BENDING DETAIL
SECTIONS V1 - V4

BAR CHART
BAR POSITIONS
12 - 13

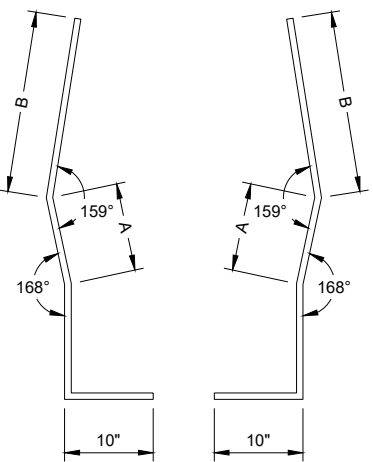
BAR	A	B
V12	1' - 3"	2' - 6"
V13	1' - 8"	2' - 1 1/2"



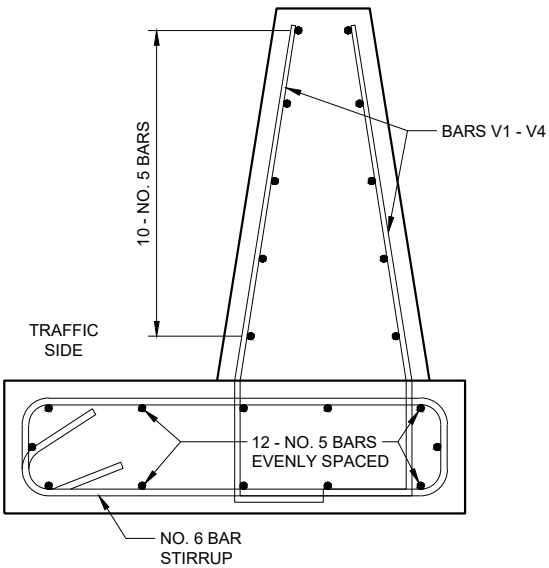
BAR BENDING DETAIL
SECTIONS V12 - V13

BAR CHART
BAR POSITIONS
14 - 16

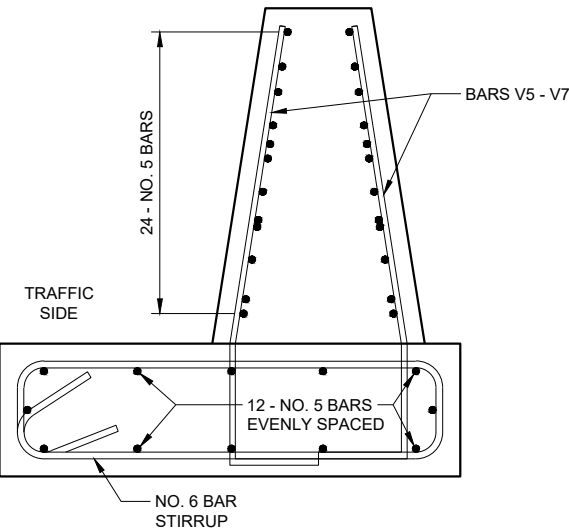
BAR	A	B
V14	6"	2' - 1"
V15	8"	1' - 11"
V16	10"	1' - 8 1/2"



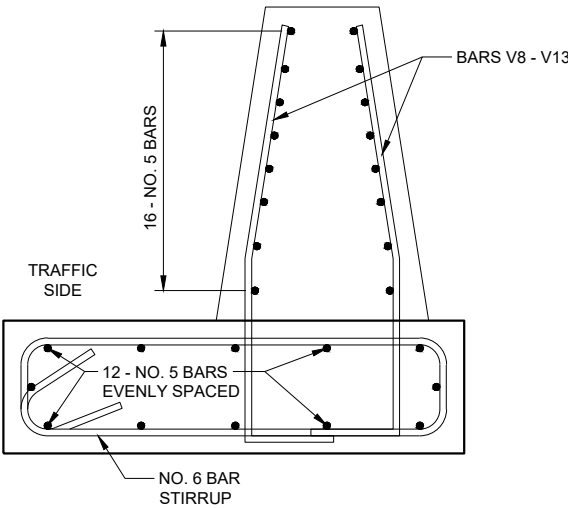
BAR BENDING DETAIL
SECTIONS V14 - V16



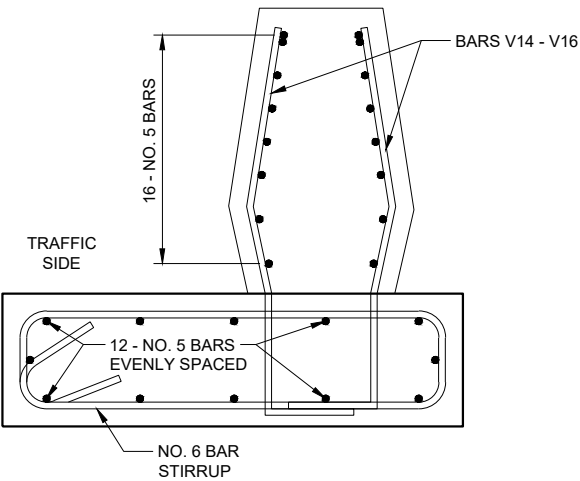
BAR DETAIL
SECTIONS 1 - 4



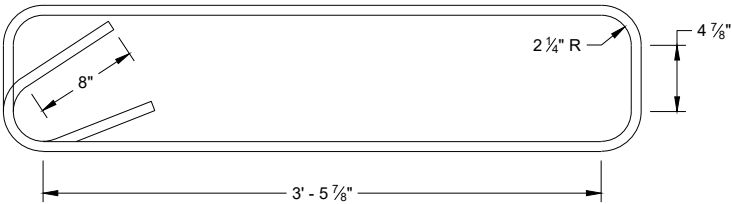
BAR DETAIL
SECTIONS 5 - 7



BAR DETAIL
SECTIONS 8 - 13



BAR DETAIL
SECTIONS 14 - 16



STIRRUP BAR
BENDING DETAIL

CONCRETE BARRIER
SINGLE SLOPE 42"
THRIE BEAM ANCHOR

STATE OF WISCONSIN
DEPARTMENT OF TRANSPORTATION

APPROVED
February 2020
DATE /S/ Rodney Taylor
ROADWAY STANDARDS DEVELOPMENT
ENGINEER
FHWA

*Concrete Barrier Single Slope Thrie Beam Anchorage***References:**

MwRSF Report No. TRP-03-47-95

Bid items associated with this drawing:

<u>ITEM NUMBER</u>	<u>DESCRIPTION</u>	<u>UNIT</u>
NONE		

Standardized Special Provisions associated with this drawing:

<u>STSP NUMBER</u>	<u>TITLE</u>
NONE	

Other SDDs associated with this drawing:

SDD 14B20	Thrie Beam Structure Approaches
SDD 14B32	Concrete Barrier Single Slope
SDD 14B34	Concrete Barrier Single Slope Class B
SDD 14B41	Roadside Retaining Walls

Design Notes:

NONE

Contact Person:

Erik Emerson (608) 266-2842