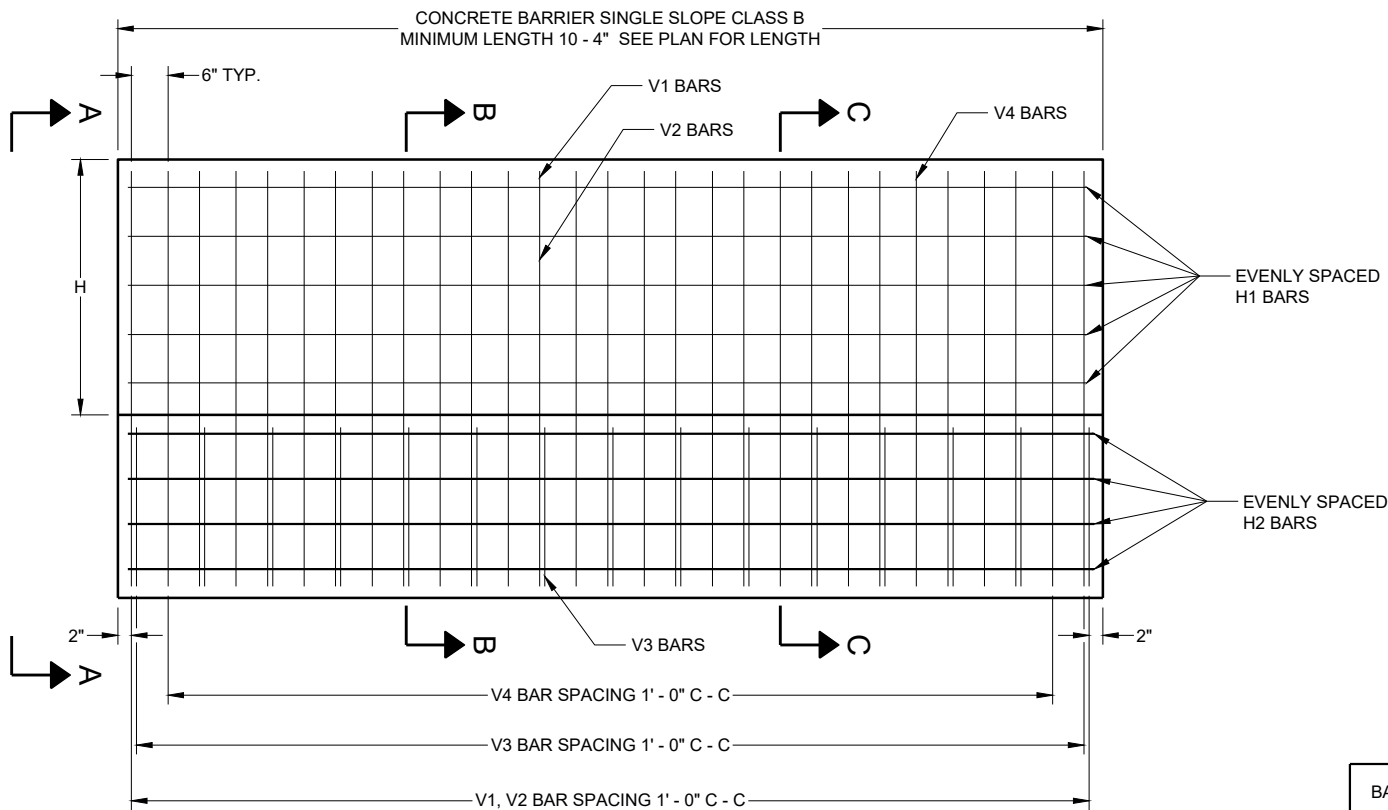
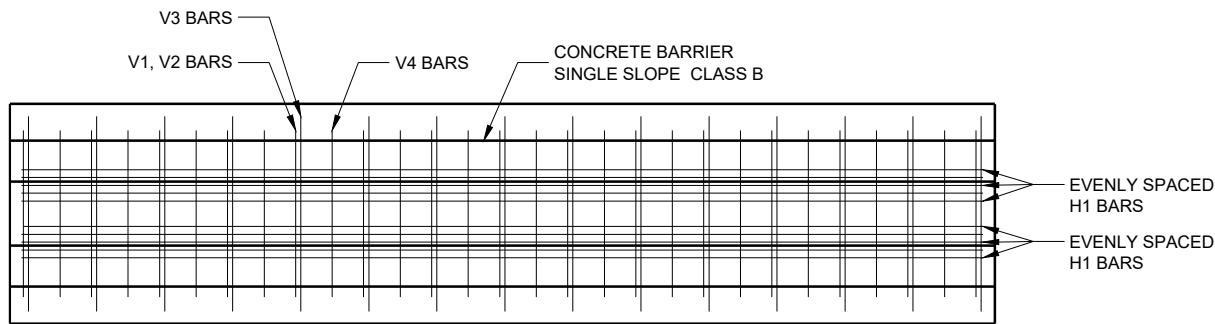




SDD 14B34-a 32", 36", & 42" Concrete Barrier Single Slope, Class B



ELEVATION VIEW

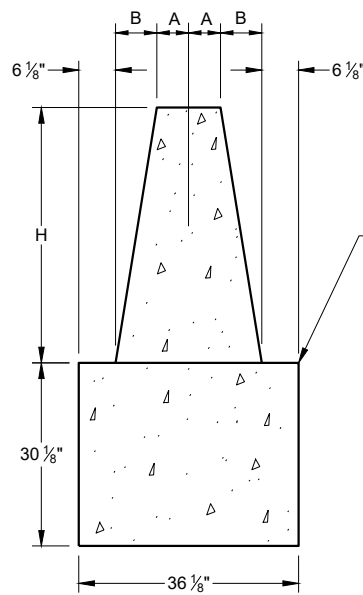


PLAN VIEW

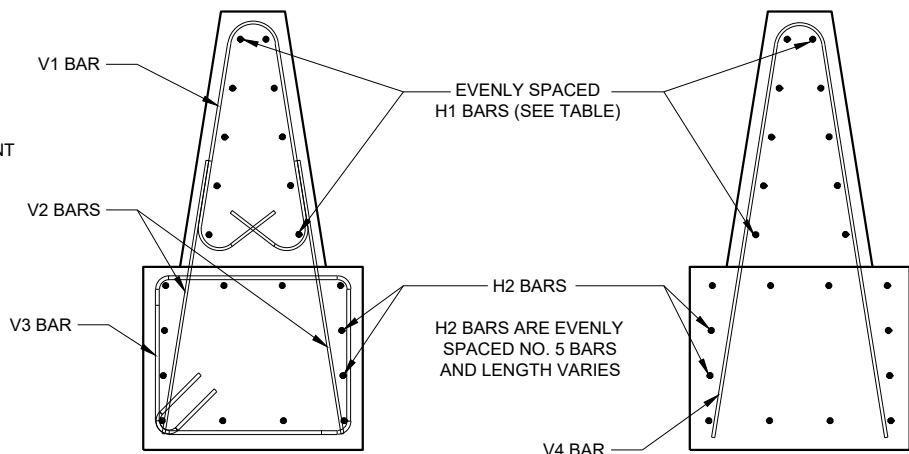
H2 BARS NOT SHOWN

GENERAL NOTES

- CONSTRUCT PER STANDARD SPECIFICATION 603.
- SPLICES OF LONGITUDINAL BARS TO BE 2' LONG AND FIRMLY TIED AND FASTENED TOGETHER UNLESS NOTED OTHERWISE.
- 4000 PSI CONCRETE AIR ENTRAINMENT PER STANDARD SPECIFICATIONS 501.
- USE 3/4" BEVEL OR 1" RADIUS ON ALL EXPOSED SHARP EDGES UNLESS NOTED OTHERWISE.
- THE NUMBER IN BAR DESIGNATION REPRESENTS THE BARS LOCATION.
- 2" CLEAR COVER TYPICAL.
- WHERE THE CONCRETE BARRIER IS ADDED TO THE FACE OF EXISTING CONCRETE STRUCTURE, MATCH EXISTING WEEP HOLES.
- PAVEMENT AND PRINCIPAL WALL JOINTS. EXPANSION JOINT FILLER MATERIAL.
- PLACE BARRIER PERPENDICULAR TO SHOULDER GRADE, UNLESS INDICATED IN PLAN.
- WHEN SWITCHING BETWEEN SLIP FORM AND CAST-IN-PLACE OPERATIONS, EXTEND LONGITUDINAL STEEL 3 FEET BEYOND SLIP-FORMING CUT OFF POINT. EXPOSED STEEL INTO NEXT POURS REINFORCEMENT. LAPS TO BE FIRMLY TIED.
- IF REQUIRED USE THRIE BEAM ANCHOR. NO OTHER ANCHOR REQUIRED.



SECTION A - A

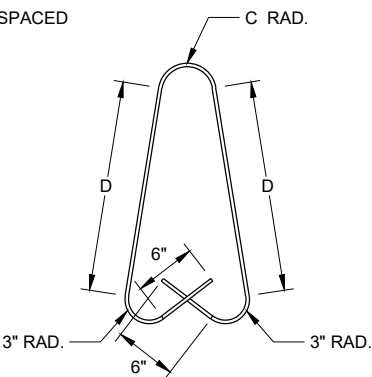


SECTION B - B

SECTION C - C

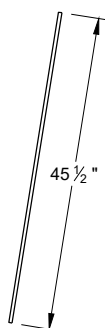
BARRIER HEIGHT H INCHES	V1 BAR		NUMBER OF H1 BARS EACH
	C RAD. INCHES	D INCHES	
32	5 5/8	18 3/4	8
36	4 3/4	23 3/4	8
42	3 5/8	30 1/2	10

BARRIER HEIGHT H INCHES	V1 BAR		V4 BAR	
	C RAD. INCHES	D INCHES	E RAD. INCHES	F INCHES
32	5 5/8	18 3/4	5 1/2	53 3/4
36	4 3/4	23 3/4	4 7/8	58 3/8
42	3 5/8	30 1/2	3 5/8	65 3/8



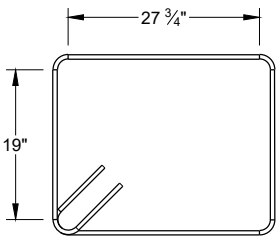
V1 BAR BENDING DETAIL

V1 BARS ARE NO. 4 BARS



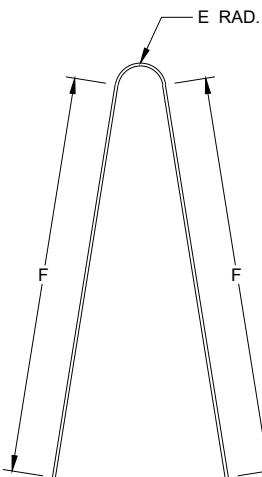
V2 BAR DETAIL

V2 BARS ARE NO. 5 BARS



V3 BAR BENDING DETAIL

V3 BARS ARE NO. 6 BARS



V4 BAR BENDING DETAIL

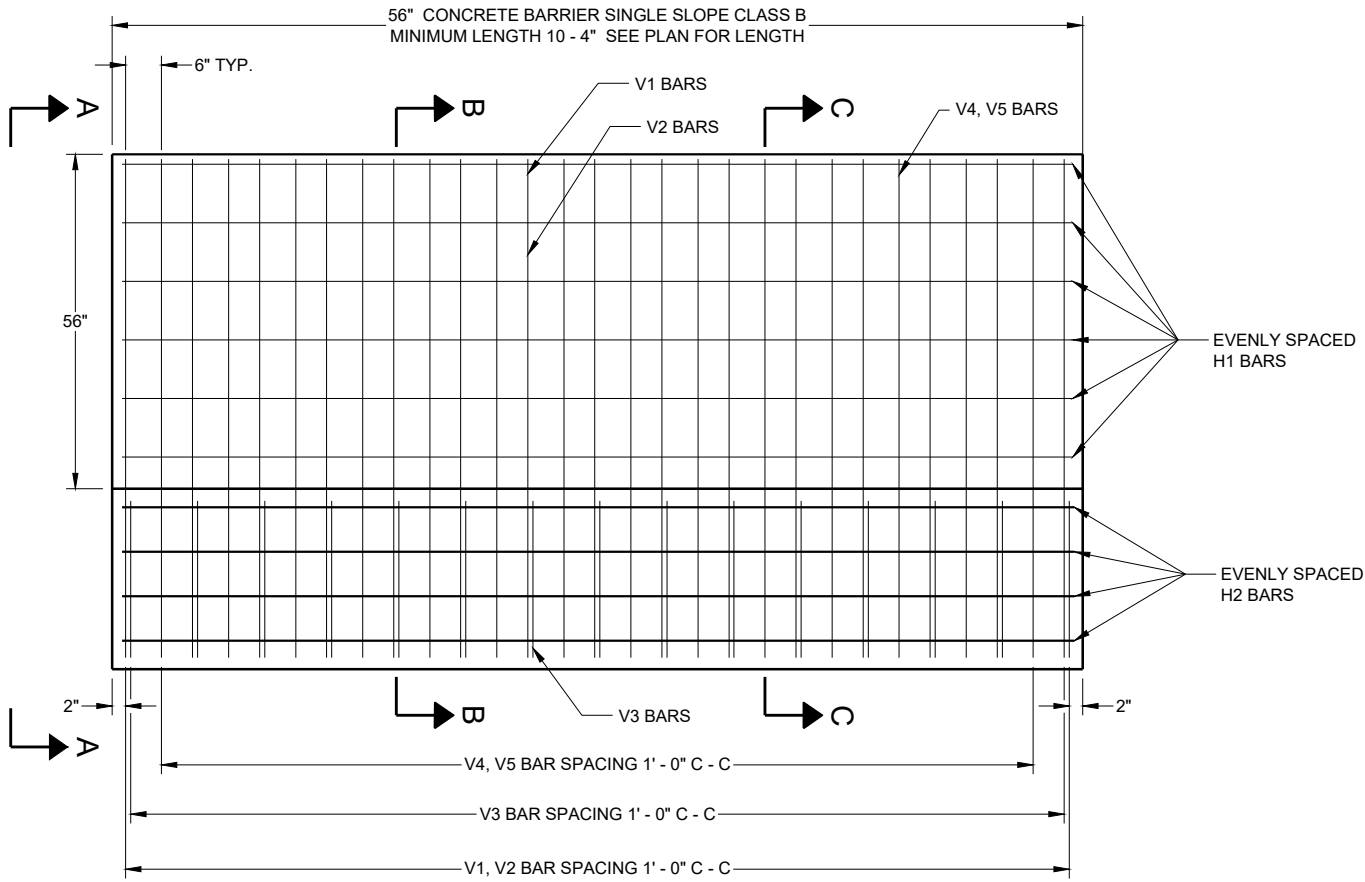
V4 BARS ARE NO. 6 BARS

32", 36", & 42"
CONCRETE BARRIER
SINGLE SLOPE CLASS B

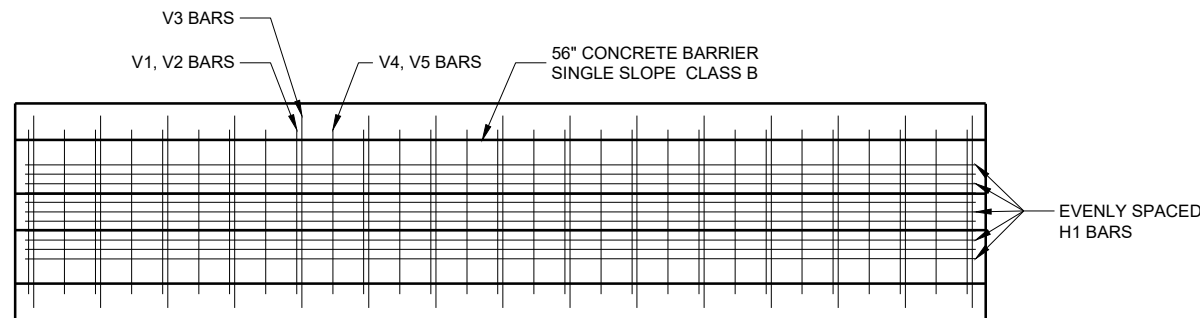
STATE OF WISCONSIN
DEPARTMENT OF TRANSPORTATION



SDD 14B34-b 56" Concrete Barrier Single Slope, Class B



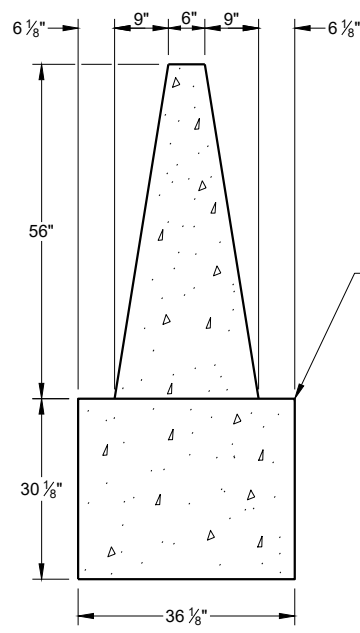
ELEVATION VIEW



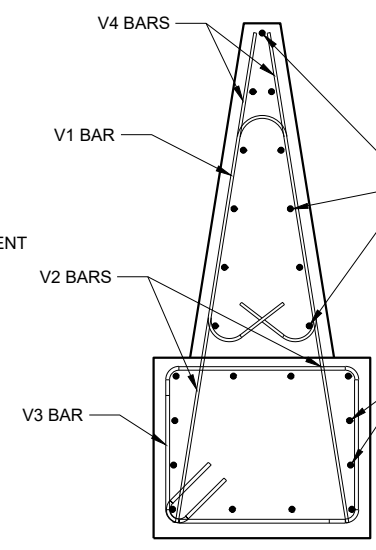
PLAN VIEW

GENERAL NOTES

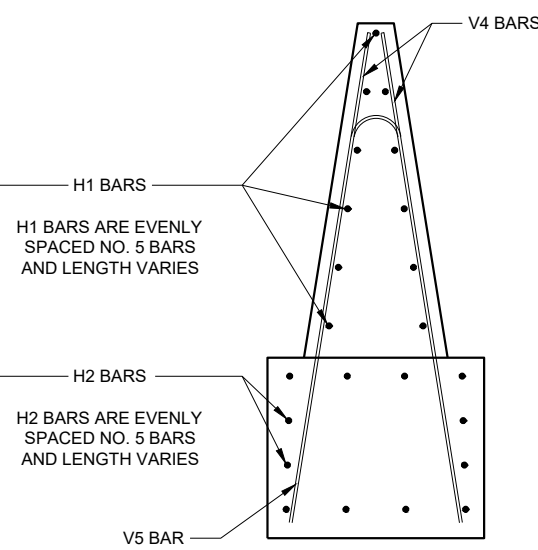
- CONSTRUCT PER STANDARD SPECIFICATION 603.
- SPLICES OF LONGITUDINAL BARS TO BE 2' LONG AND FIRMLY TIED AND FASTENED TOGETHER UNLESS NOTED OTHERWISE.
- 4000 PSI CONCRETE AIR ENTRAINMENT PER STANDARD SPECIFICATIONS 501.
- USE 3/4" BEVEL OR 1" RADIUS ON ALL EXPOSED SHARP EDGES UNLESS NOTED OTHERWISE.
- THE NUMBER IN BAR DESIGNATION REPRESENTS THE BARS LOCATION.
- 2" CLEAR COVER TYPICAL.
- WHERE THE CONCRETE BARRIER IS ADDED TO THE FACE OF EXISTING CONCRETE STRUCTURE, MATCH EXISTING WEEP HOLES.
- PAVEMENT AND PRINCIPAL WALL JOINTS. EXPANSION JOINT FILLER MATERIAL.
- PLACE BARRIER PERPENDICULAR TO SHOULDER GRADE, UNLESS INDICATED IN PLAN.
- WHEN SWITCHING BETWEEN SLIP FORM AND CAST-IN-PLACE OPERATIONS, EXTEND LONGITUDINAL STEEL 3 FEET BEYOND SLIP-FORMING CUT OFF POINT. EXPOSED STEEL INTO NEXT POURS REINFORCEMENT. LAPS TO BE FIRMLY TIED.
- IF REQUIRED USE THRIE BEAM ANCHOR. NO OTHER ANCHOR REQUIRED.



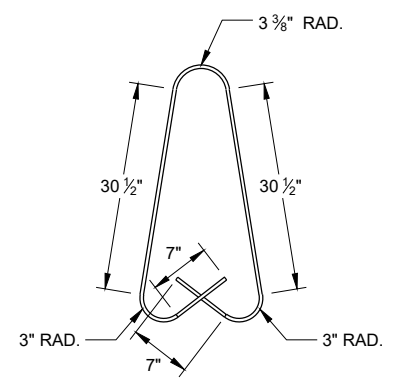
SECTION A - A



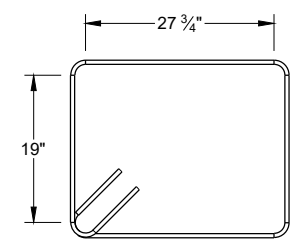
SECTION B - B



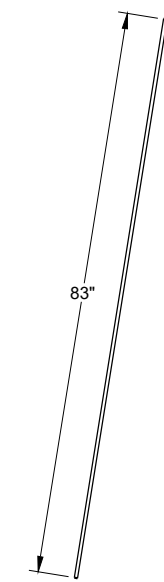
SECTION C - C



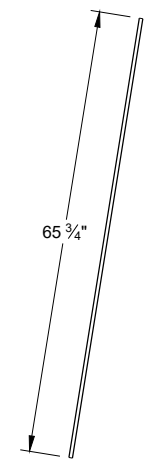
V1 BAR BENDING DETAIL
V1 BARS ARE NO. 4 BARS



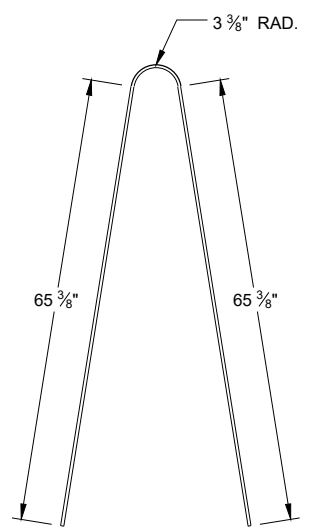
V3 BAR BENDING DETAIL
V3 BARS ARE NO. 6 BARS



V2 BAR DETAIL
V2 BARS ARE NO. 5 BARS



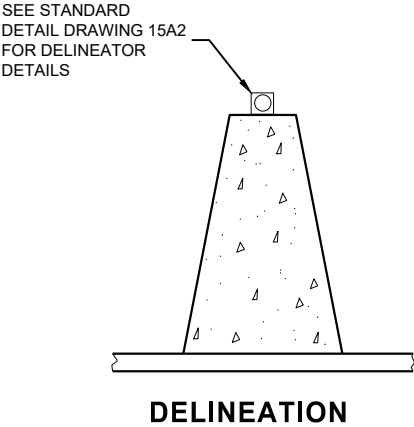
V4 BAR DETAIL
V4 BARS ARE NO. 5 BARS



V5 BAR BENDING DETAIL
V5 BARS ARE NO. 6 BARS

56" CONCRETE BARRIER
SINGLE SLOPE CLASS B

STATE OF WISCONSIN
DEPARTMENT OF TRANSPORTATION



**DELINEATOR SPACING
ON HORIZONTAL CURVES**

RADIUS OF CURVE	APPROXIMATE SPACING ON CURVE
50 FEET	20 FEET
115 FEET	25 FEET
180 FEET	35 FEET
250 FEET	40 FEET
300 FEET	50 FEET
400 FEET	55 FEET
500 FEET	65 FEET
600 FEET	70 FEET
700 FEET	75 FEET
800 FEET	80 FEET
900 FEET	85 FEET
1000 FEET	90 FEET

**DELINEATOR SPACING ON RADIUS GREATER
THAN 1000 FEET OR TANGENT SECTIONS**

	LENGTH OF BARRIER	REFLECTOR SPACING	NO. SURFACES REFLECTORIZED	MIN. NO. REFLECTORS
ONE WAY TRAFFIC	< 200'	50' C - C	1	3
	> 200'	100' C - C	1	
TWO WAY TRAFFIC	< 200'	25' C - C	1	3
	> 200'	50' C - C	1	
TWO WAY TRAFFIC	< 200'	50' C - C	2	6
	> 200'	100' C - C	2	

**CONCRETE BARRIER
SINGLE SLOPE CLASS B**

STATE OF WISCONSIN
DEPARTMENT OF TRANSPORTATION

APPROVED
07/2018
DATE

/S/ Rodney Taylor
ROADWAY STANDARDS DEVELOPMENT
UNIT SUPERVISOR

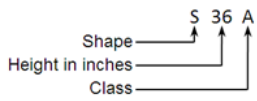
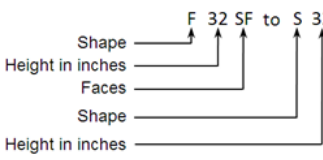
FHWA

Concrete Barrier Single Slope for Runs under 40-Feet Long**References:**

NONE

Bid items associated with this drawing:

Bid items for single slope barrier and associated transitions are encoded as follows:

BARRIER BID ITEM TYPES		DESCRIPTION		CODE
 <p><i>example: Concrete Barrier Type S36A is a 36" single sloped median retaining wall barrier</i></p>		SHAPE	New Jersey shape	NJ
			F shape	F
			Vertical	V
			Single slope barrier	S
TRANSITION BID ITEM TYPES		CLASS	Standard barrier section	none
 <p><i>example: Concrete Barrier Transition Type F32SF to S32 is a transition from 32" single faced F barrier to a 32" single sloped barrier</i></p>			Median retaining wall	A
			Short barrier section	B
			Roadside retaining wall	C
		FACES	Double faced barrier	DF
			Single faced barrier	SF

<u>ITEM NUMBER</u>	<u>DESCRIPTION</u>	<u>UNIT</u>
204.0157	Removing Concrete Barrier	LF
603.1332	Concrete Barrier Type S32B	LF
603.1336	Concrete Barrier Type S36B	LF
603.1342	Concrete Barrier Type S42B	LF
603.1356	Concrete Barrier Type S56B	LF
614.0200	Steel Thrie Beam Structure Approach	LF
614.0700	Sand Barrel Array	EACH
614.0800	Crash Cushions Permanent	EACH
614.0805	Crash Cushions Permanent Low Maintenance	EACH
614.0905	Crash Cushion Temporary	EACH
633.0500	Delineator Reflectors	EACH
633.1000	Delineator Barrier Wall	EACH
690.0150	Sawing Asphalt	LF
690.0250	Sawing Concrete	LF

Standardized Special Provisions associated with this drawing:

STSP NUMBER TITLE
 NONE

Other SDDs associated with this drawing:

[SDD 14B20](#) Steel Thrie Beam Structure Approach
[SDD 14B33](#) Concrete Barrier Single Slope Thrie Beam Anchorages
[SDD 15A4](#) Delineator Post with Reflective Sheeting

Design Notes:

Barrier is not structural protection for bridge substructure.

Contact Person:

Erik Emerson (608) 266-2842