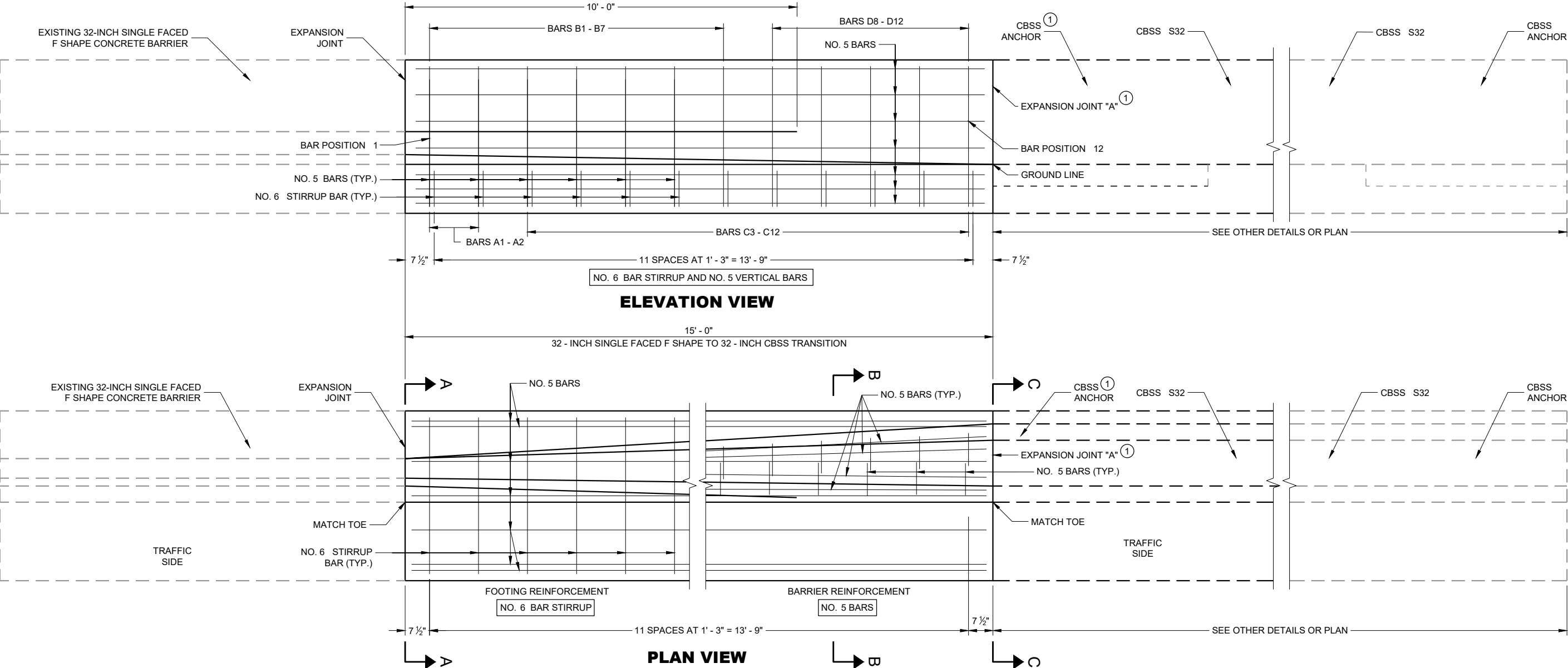


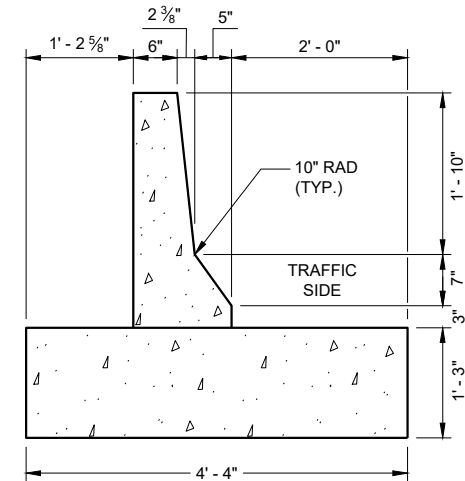


SDD 14B36-a 32" Single Faced F Shape Concrete Barrier to 32" Single Slope Concrete Barrier Transition Layout

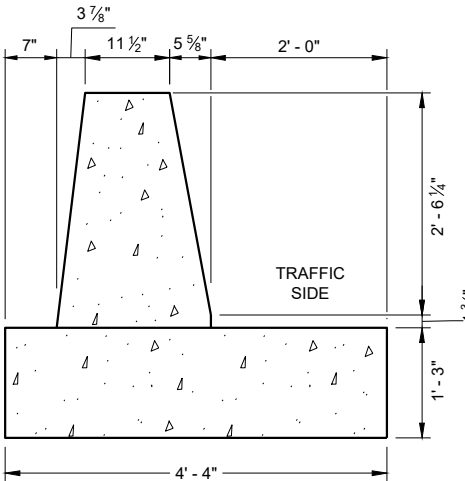


GENERAL NOTES

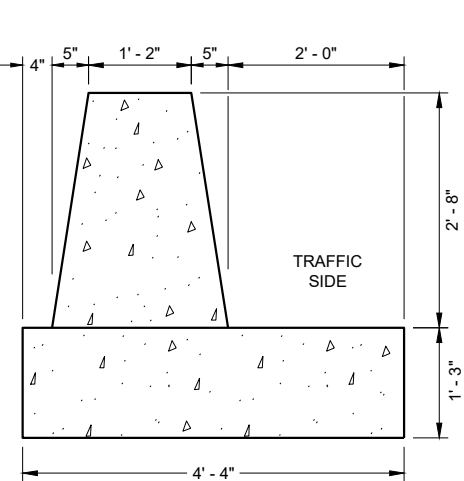
- CONSTRUCT PER STANDARD SPECIFICATION 603.
- SPLICES OF LONGITUDINAL BARS TO BE 2' LONG AND FIRMLY TIED AND FASTENED TOGETHER UNLESS OTHERWISE NOTED.
- 4000 PSI CONCRETE AIR ENTRAINMENT PER STANDARD SPECIFICATIONS SECTION 501.
- USE 3/4" BEVEL OR 1" RADIUS ON ALL EXPOSED SHARP EDGES UNLESS OTHERWISE NOTED.
- THE NUMBER IN BAR DESIGNATION REPRESENTS THE BARS LOCATION.
- 2" CLEAR COVER TYPICAL.
- ① EXPANSION JOINT "A" MAY BE REPLACED WITH A COLD JOINT PROVIDED THAT 3 FEET OF LAP OF LONGITUDINAL STEEL IS PROVIDED. IF COLD JOINT IS USED, ANCHOR IS NOT REQUIRED.



SECTION A - A



SECTION B - B



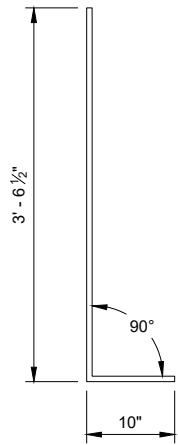
SECTION C - C

32 - INCH SINGLE FACED F SHAPE
CONCRETE BARRIER TO 32 - INCH SINGLE
SLOPE CONCRETE BARRIER TRANSITION

STATE OF WISCONSIN
DEPARTMENT OF TRANSPORTATION

SDD 14B36-b 32" Single Faced F Shape Concrete Barrier to 32" Single Slope Concrete Barrier Transition - Steel Layout

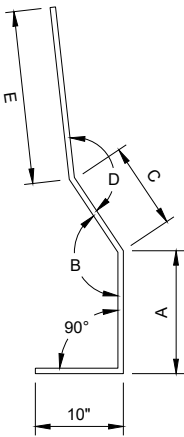
"A" BAR
POSITIONS 1 - 2



"A" BAR
BENDING DETAIL

"B" BAR CHART
BAR POSITIONS
1 - 7

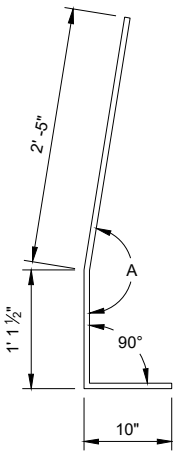
BAR	A	B	C	D	E
B1	1' - 2"	148°	10"	154°	1' - 7 3/4"
B2	1' - 2"	154°	9 3/4"	162°	1' - 7 3/4"
B3	1' - 2"	154°	9 3/4"	163°	1' - 7 1/2"
B4	1' - 2"	157°	9 3/4"	165°	1' - 7 1/2"
B5	1' - 1 1/2"	161°	10"	169°	1' - 7 1/2"
B6	1' - 1 1/2"	163°	10"	172°	1' - 7 1/2"
B7	1' - 1 1/2"	166°	10"	175°	1' - 7 1/2"



"B" BAR
BENDING DETAIL

"C" BAR CHART
BAR POSITIONS
3 - 12

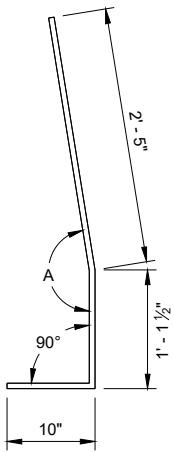
BAR	A
C3	177°
C4	177°
C5	176°
C6	176°
C7	174°
C8	174°
C9	173°
C10	173°
C11	173°
C12	172°



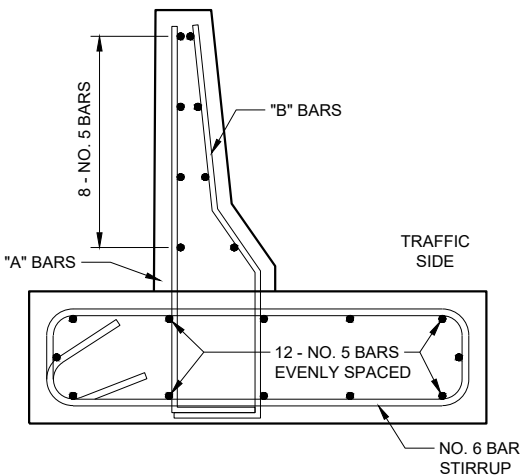
"C" BAR
BENDING DETAIL

"D" BAR CHART
BAR POSITIONS
8 - 12

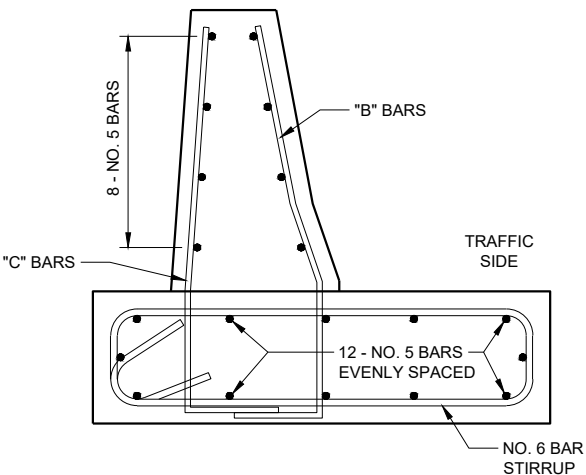
BAR	A
D8	170°
D9	170°
D10	170°
D11	171°
D12	171°



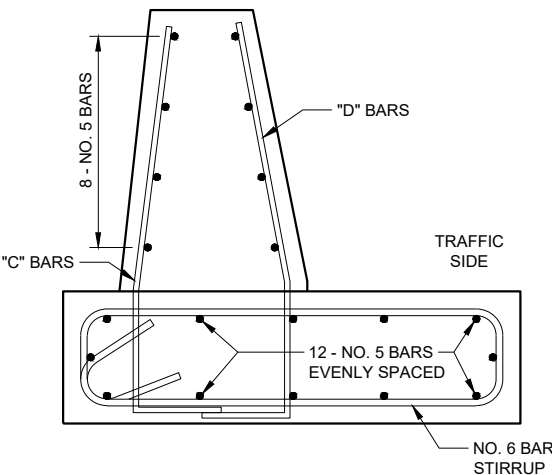
"D" BAR
BENDING DETAIL



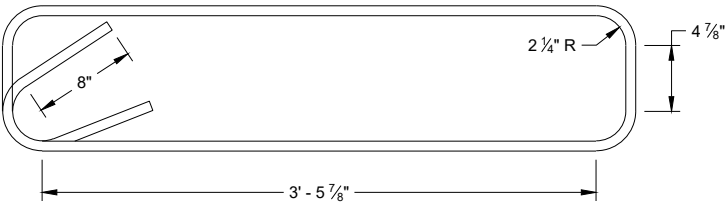
BAR DETAIL
BAR POSITIONS 1 - 2



BAR DETAIL
BAR POSITIONS 3 - 7



BAR DETAIL
BAR POSITIONS 8 - 12



STIRRUP BAR
BENDING DETAIL

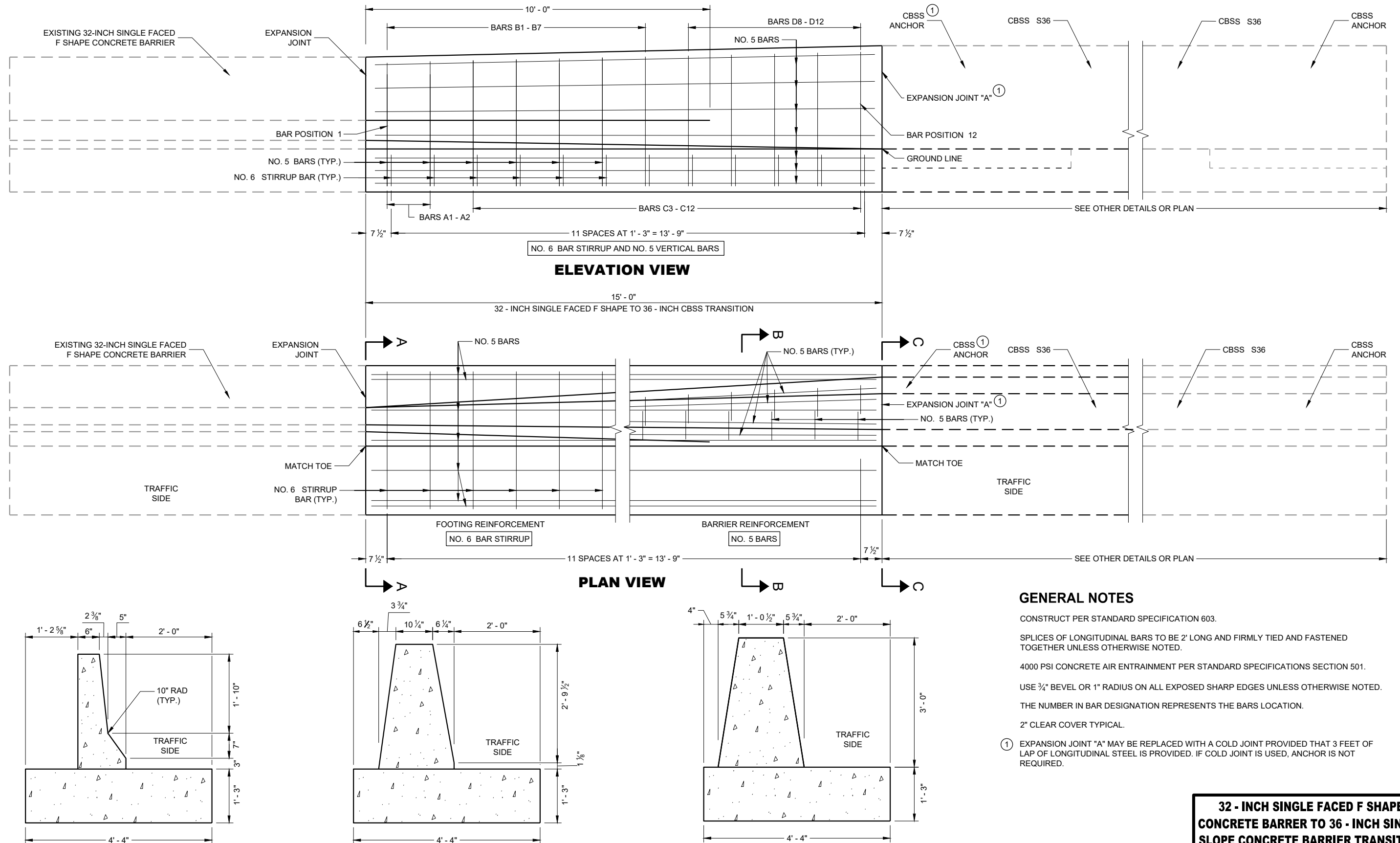
32 - INCH SINGLE FACED F SHAPE
CONCRETE BARRIER TO 32 - INCH SINGLE
SLOPE CONCRETE BARRIER TRANSITION

STATE OF WISCONSIN
DEPARTMENT OF TRANSPORTATION

APPROVED
February 2020 /S/ Rodney Taylor
DATE ROADWAY STANDARDS DEVELOPMENT
ENGINEER
FHWA



SDD 14B36-c 32-Inch Single Faced F Shape Concrete Barrier to 36-Inch Single Slope Concrete Barrier Transition



GENERAL NOTES

CONSTRUCT PER STANDARD SPECIFICATION 603.

SPLICES OF LONGITUDINAL BARS TO BE 2' LONG AND FIRMLY TIED AND FASTENED TOGETHER UNLESS OTHERWISE NOTED.

4000 PSI CONCRETE AIR ENTRAINMENT PER STANDARD SPECIFICATIONS SECTION 501.

USE 3/4" BEVEL OR 1" RADIUS ON ALL EXPOSED SHARP EDGES UNLESS OTHERWISE NOTED.

THE NUMBER IN BAR DESIGNATION REPRESENTS THE BARS LOCATION.

2" CLEAR COVER TYPICAL.

① EXPANSION JOINT "A" MAY BE REPLACED WITH A COLD JOINT PROVIDED THAT 3 FEET OF LAP OF LONGITUDINAL STEEL IS PROVIDED. IF COLD JOINT IS USED, ANCHOR IS NOT REQUIRED.

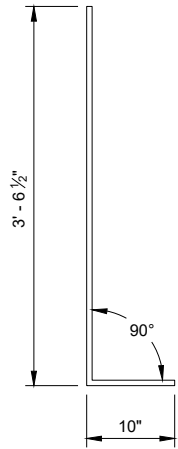
**32 - INCH SINGLE FACED F SHAPE
CONCRETE BARRIER TO 36 - INCH SINGLE
SLOPE CONCRETE BARRIER TRANSITION**

STATE OF WISCONSIN
DEPARTMENT OF TRANSPORTATION



SDD 14B36-d 32" Single Faced F Shape Concrete Barrier to 36" Single Slope Concrete Barrier Transition - Steel Layout

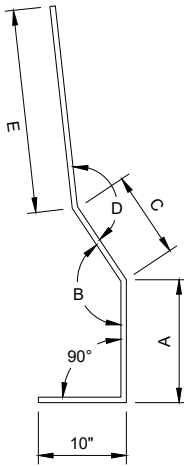
"A" BAR
POSITIONS 1 - 2



"A" BAR
BENDING DETAIL

"B" BAR CHART
BAR POSITIONS
1 - 7

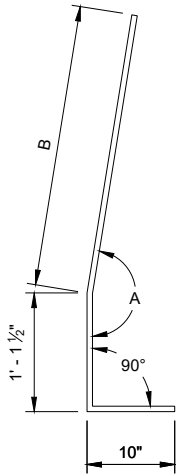
BAR	A	B	C	D	E
B1	1' - 2"	148°	10"	154°	1' - 8 1/4"
B2	1' - 2"	154°	9 3/4"	162°	1' - 8 1/2"
B3	1' - 2"	154°	9 3/4"	163°	1' - 8 3/4"
B4	1' - 2"	157°	9 3/4"	165°	1' - 9"
B5	1' - 1 1/2"	161°	10"	169°	1' - 9 1/4"
B6	1' - 1 1/2"	163°	10"	172°	1' - 9 1/2"
B7	1' - 1 1/2"	166°	10"	175°	1' - 10"



"B" BAR
BENDING DETAIL

"C" BAR CHART
BAR POSITIONS
3 - 12

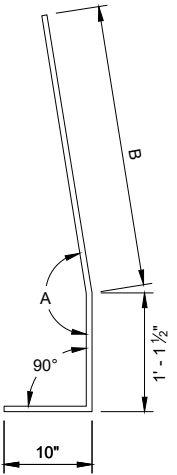
BAR	A	B
C3	177°	2' - 6"
C4	177°	2' - 6 1/2"
C5	176°	2' - 6 3/4"
C6	176°	2' - 7"
C7	174°	2' - 7 1/2"
C8	174°	2' - 7 3/4"
C9	173°	2' - 8 1/2"
C10	173°	2' - 8 1/2"
C11	173°	2' - 9"
C12	172°	2' - 9 1/2"



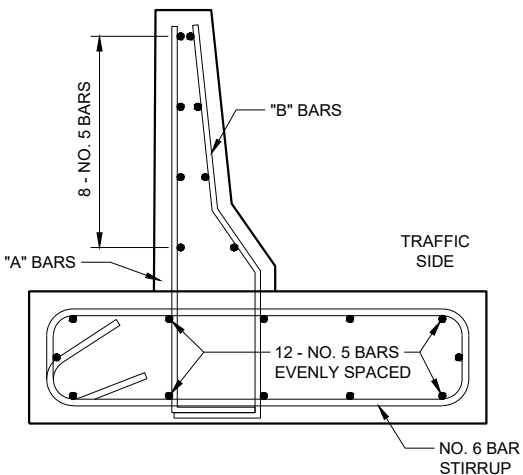
"C" BAR
BENDING DETAIL

"D" BAR CHART
BAR POSITIONS
8 - 12

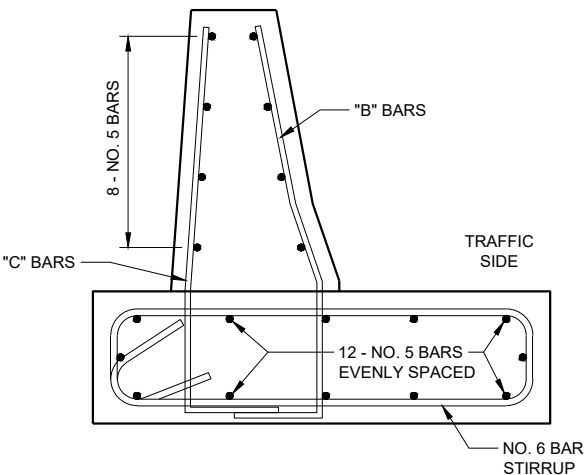
BAR	A	B
D8	170°	2' - 7 3/4"
D9	170°	2' - 8 1/2"
D10	170°	2' - 8 1/2"
D11	171°	2' - 9"
D12	171°	2' - 9 1/2"



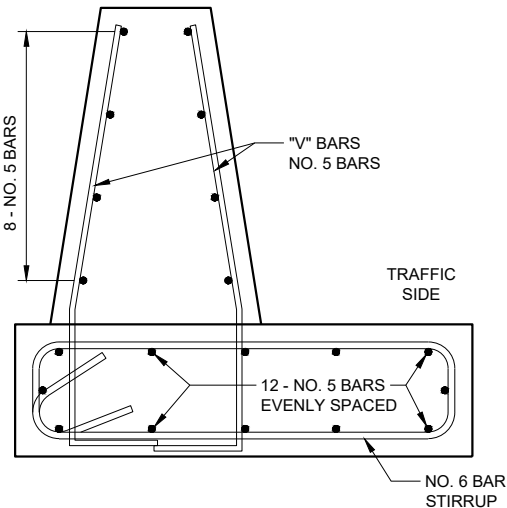
"D" BAR
BENDING DETAIL



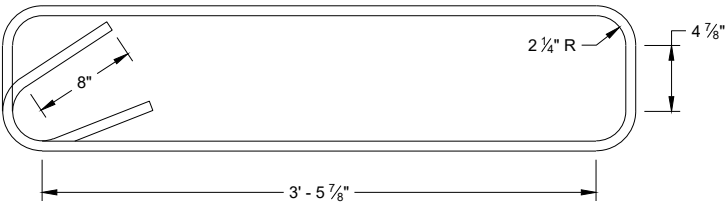
BAR DETAIL
BAR POSITIONS 1 - 2



BAR DETAIL
BAR POSITIONS 3 - 7



BAR DETAIL
BAR POSITIONS 8 - 12



STIRRUP BAR
BENDING DETAIL

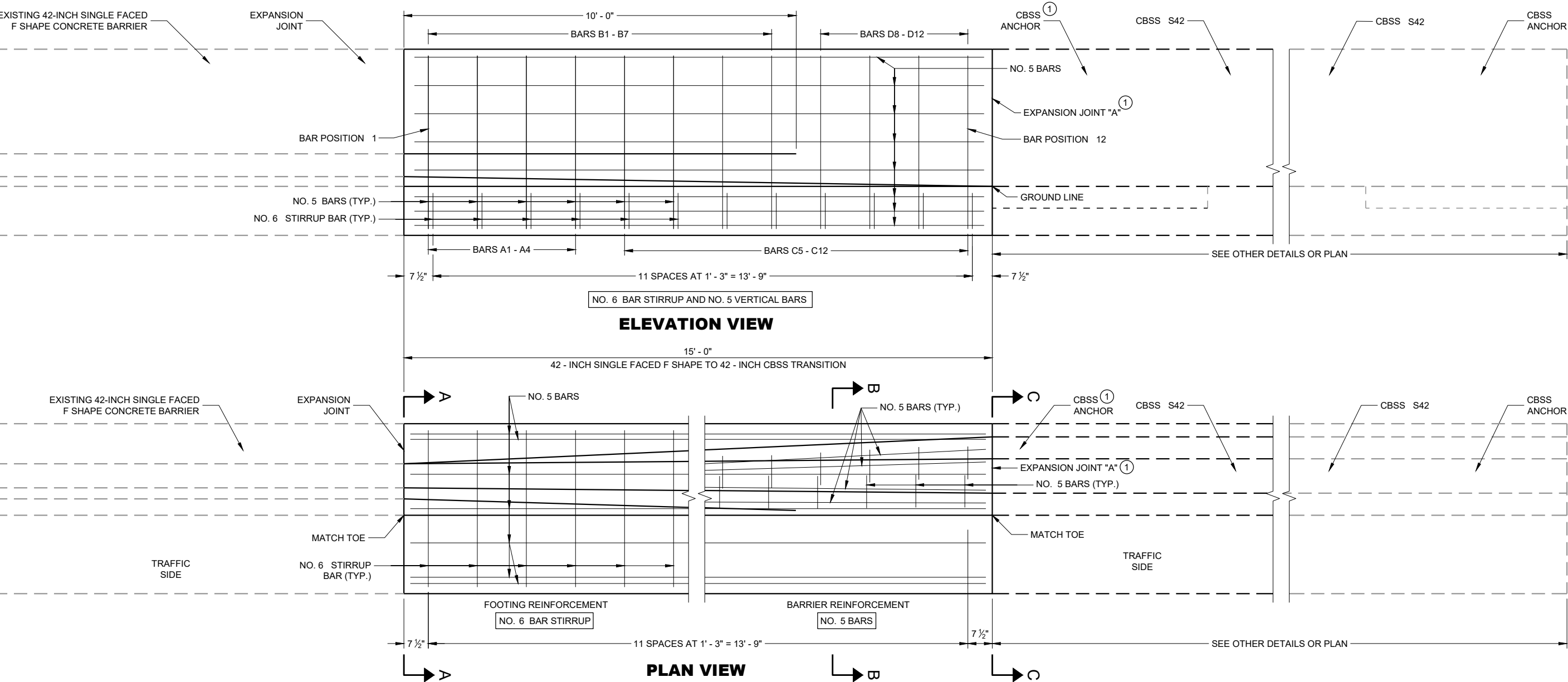
32 - INCH SINGLE FACED F SHAPE
CONCRETE BARRIER TO 36 - INCH SINGLE
SLOPE CONCRETE BARRIER TRANSITION

STATE OF WISCONSIN
DEPARTMENT OF TRANSPORTATION

APPROVED
February 2020 /S/ Rodney Taylor
DATE ROADWAY STANDARDS DEVELOPMENT
ENGINEER
FHWA



SDD 14B36-e 42-Inch Single Faced F Shape to 42-Inch Single Slope Concrete Barrier Transition Layout



GENERAL NOTES

- CONSTRUCT PER STANDARD SPECIFICATION 603.
- SPLICES OF LONGITUDINAL BARS TO BE 2' LONG AND FIRMLY TIED AND FASTENED TOGETHER UNLESS OTHERWISE NOTED.
- 4000 PSI CONCRETE AIR ENTRAINMENT PER STANDARD SPECIFICATIONS SECTION 501.
- USE 3/4" BEVEL OR 1" RADIUS ON ALL EXPOSED SHARP EDGES UNLESS OTHERWISE NOTED.
- THE NUMBER IN BAR DESIGNATION REPRESENTS THE BARS LOCATION.
- 2" CLEAR COVER TYPICAL.
- ① EXPANSION JOINT "A" MAY BE REPLACED WITH A COLD JOINT PROVIDED THAT 3 FEET OF LAP OF LONGITUDINAL STEEL IS PROVIDED. IF COLD JOINT IS USED, ANCHOR IS NOT REQUIRED.

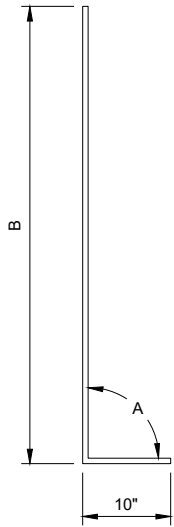
**42 - INCH SINGLE FACED F SHAPE
CONCRETE BARRER TO 42 - INCH SINGLE
SLOPE CONCRETE BARRIER TRANSITION**

STATE OF WISCONSIN
DEPARTMENT OF TRANSPORTATION

SDD 14B36-f 42-Inch Single Faced F Shape to 42-Inch Single Slope Concrete Barrier Transition - Steel Layout

"A" BAR CHART
BAR POSITIONS
1 - 4

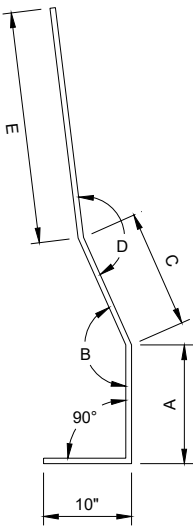
BAR	A	B
A1	90°	4' - 4 3/4"
A2	89°	4' - 5"
A3	88°	4' - 5"
A4	88°	4' - 5"



"A" BAR
BENDING DETAIL

"B" BAR CHART
BAR POSITIONS
1 - 7

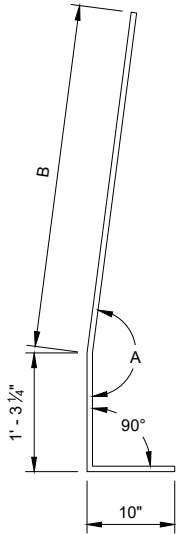
BAR	A	B	C	D	E
B1	1' - 3"	148°	8 1/2"	154°	2' - 6 3/4"
B2	1' - 3"	149°	8 1/2"	156°	2' - 6 1/2"
B3	1' - 3"	152°	8 1/2"	159°	2' - 6 1/2"
B4	1' - 2 1/2"	157°	8 1/2"	165°	2' - 6 1/2"
B5	1' - 2 1/2"	160°	8 1/2"	168°	2' - 6 1/2"
B6	1' - 2 1/2"	163°	8 1/2"	172°	2' - 6 1/2"
B7	1' - 2"	166°	8 1/2"	176°	2' - 7"



"B" BAR
BENDING DETAIL

"C" BAR CHART
BAR POSITIONS
5 - 12

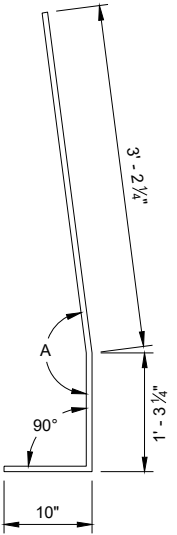
BAR	A	B
C5	177°	3' - 1 3/4"
C6	176°	3' - 1 3/4"
C7	175°	3' - 1 3/4"
C8	174°	3' - 2"
C9	174°	3' - 2"
C10	173°	3' - 2"
C11	172°	3' - 2"
C12	171°	3' - 2"



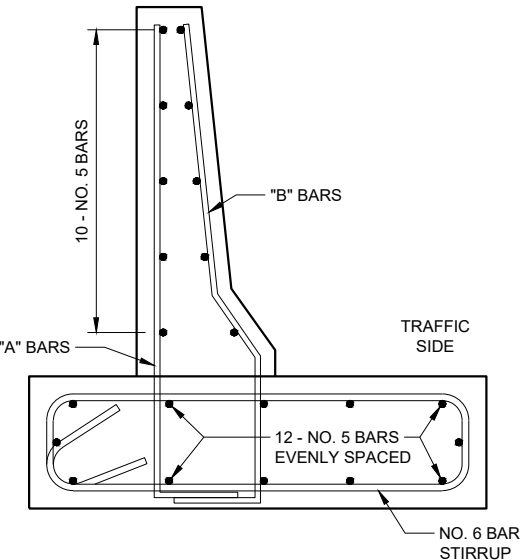
"C" BAR
BENDING DETAIL

"D" BAR CHART
BAR POSITIONS
8 - 12

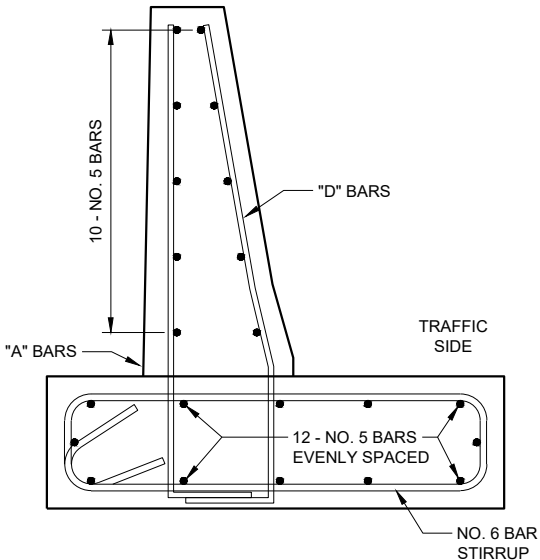
BAR	A
D8	170°
D9	170°
D10	170°
D11	171°
D12	171°



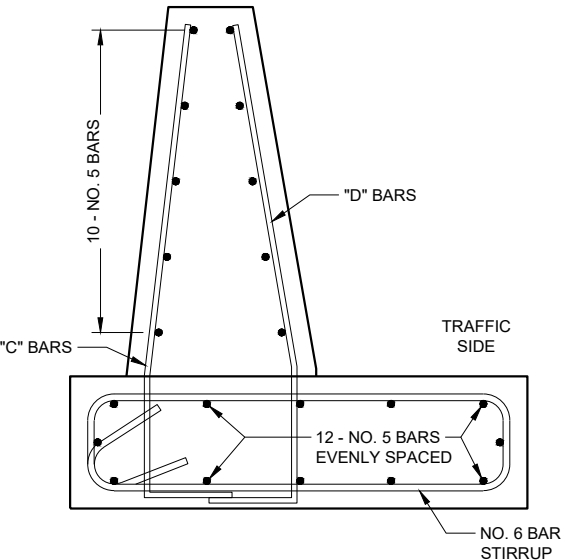
"D" BAR
BENDING DETAIL



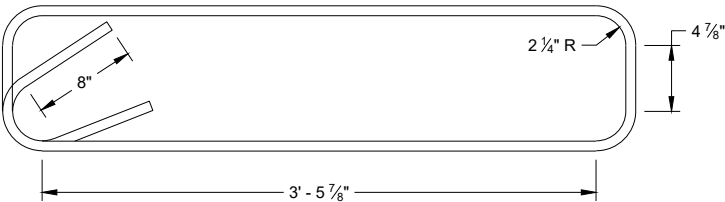
BAR DETAIL
BAR POSITIONS 1 - 4



BAR DETAIL
BAR POSITION 5 - 7



BAR DETAIL
BAR POSITIONS 8 - 12



STIRRUP BAR
BENDING DETAIL

42 - INCH SINGLE FACED F SHAPE
CONCRETE BARRIER TO 42 - INCH SINGLE
SLOPE CONCRETE BARRIER TRANSITION

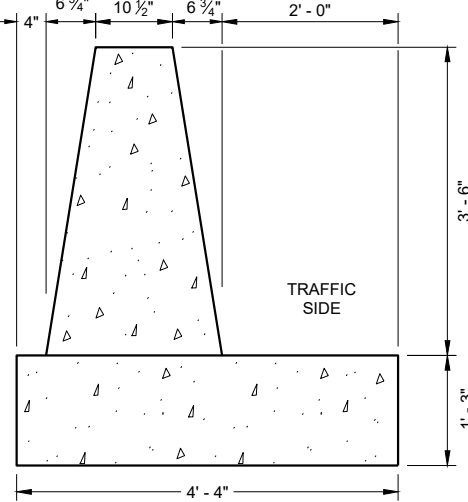
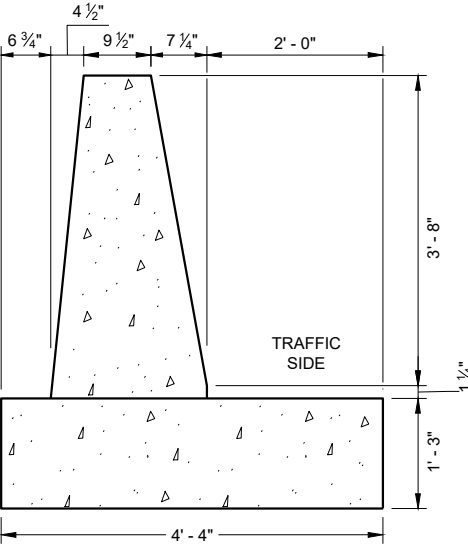
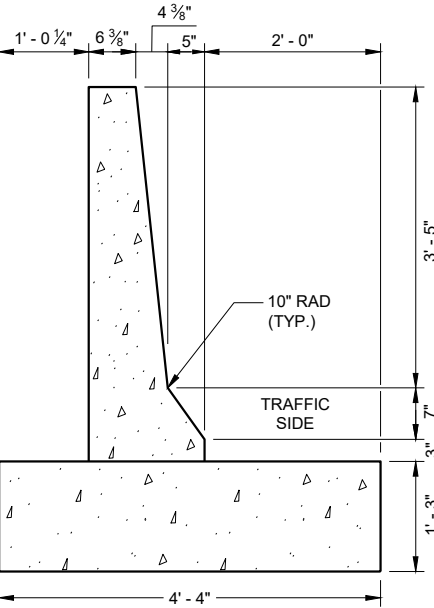
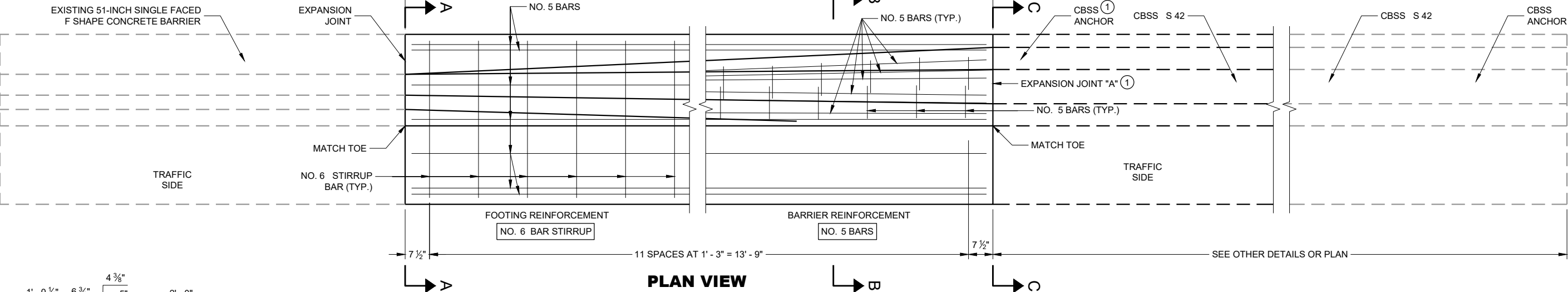
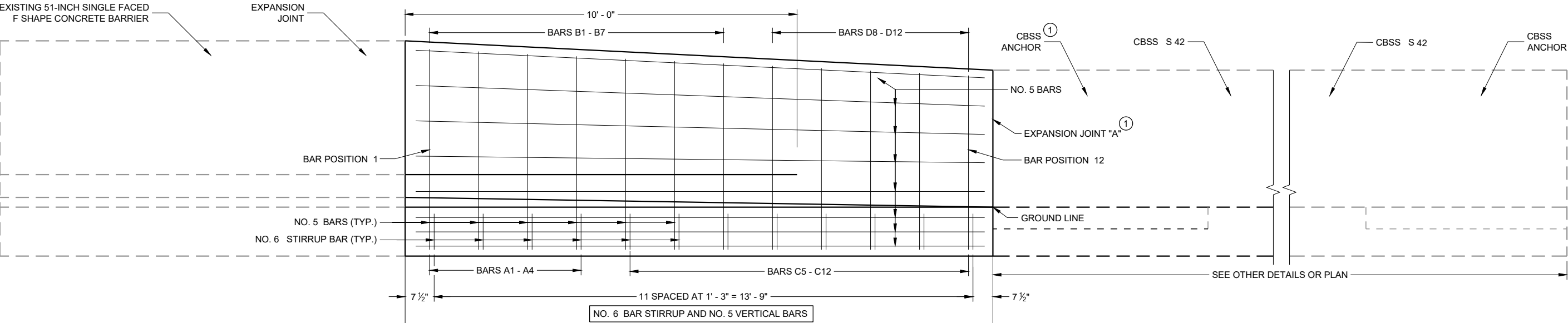
STATE OF WISCONSIN
DEPARTMENT OF TRANSPORTATION

APPROVED
February 2020
DATE
/S/ Rodney Taylor
ROADWAY STANDARDS DEVELOPMENT
ENGINEER

FHWA



SDD 14B36-g 51-Inch Single Faced F Shape to 42-Inch Single Slope Concrete Barrier Transition - Transition Layout



- GENERAL NOTES**
- CONSTRUCT PER STANDARD SPECIFICATION 603.
- SPLICES OF LONGITUDINAL BARS TO BE 2' LONG AND FIRMLY TIED AND FASTENED TOGETHER UNLESS OTHERWISE NOTED.
- 4000 PSI CONCRETE AIR ENTRAINMENT PER STANDARD SPECIFICATIONS SECTION 501.
- USE 3/4" BEVEL OR 1" RADIUS ON ALL EXPOSED SHARP EDGES UNLESS OTHERWISE NOTED.
- THE NUMBER IN BAR DESIGNATION REPRESENTS THE BARS LOCATION.
- 2" CLEAR COVER TYPICAL.
- ① EXPANSION JOINT "A" MAY BE REPLACED WITH A COLD JOINT PROVIDED THAT 3 FEET OF LAP OF LONGITUDINAL STEEL IS PROVIDED. IF COLD JOINT IS USED, ANCHOR IS NOT REQUIRED.

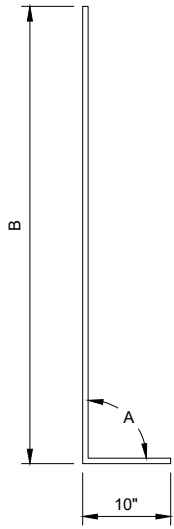
**51 - INCH SINGLE FACED F SHAPE
CONCRETE BARRER TO 42 - INCH SINGLE
SLOPE CONCRETE BARRIER TRANSITION**

STATE OF WISCONSIN
DEPARTMENT OF TRANSPORTATION

SDD 14B36-h 51-Inch Single Faced F Shape to 42-Inch Single Slope Concrete Barrier Transition - Steel Layout

"A" BAR CHART
BAR POSITIONS
1 - 4

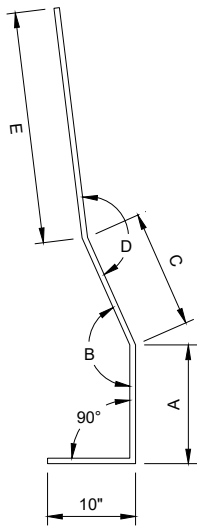
BAR	A	B
A1	90°	5' - 1 1/4"
A2	89°	5' - 0 1/2"
A3	88°	4' - 11 1/2"
A4	88°	4' - 11"



"A" BAR
BENDING DETAIL

"B" BAR CHART
BAR POSITIONS
1 - 7

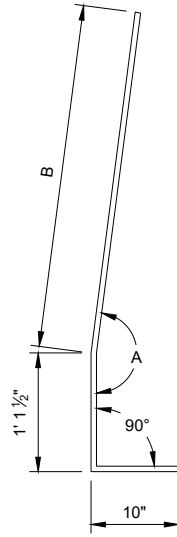
BAR	A	B	C	D	E
B1	1' - 3"	148°	8 1/2"	154°	3' - 3 1/4"
B2	1' - 3"	149°	8 1/2"	156°	3' - 2 1/2"
B3	1' - 3"	152°	8 1/2"	159°	3' - 1 1/2"
B4	1' - 2 1/2"	157°	8 1/2"	165°	3' - 1"
B5	1' - 2 1/2"	160°	8 1/2"	168°	3' - 0 3/4"
B6	1' - 2 1/2"	163°	8 1/2"	172°	2' - 11 1/2"
B7	1' - 2"	166°	8 1/2"	175°	2' - 11"



"B" BAR
BENDING DETAIL

"C" BAR CHART
BAR POSITIONS
5 - 12

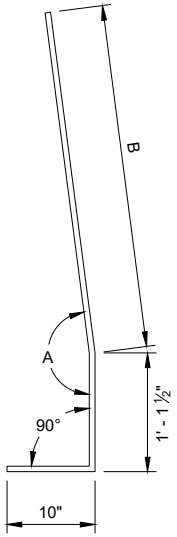
BAR	A	B
C5	177°	3' - 7 1/4"
C6	176°	3' - 6 1/2"
C7	175°	3' - 5 3/4"
C8	175°	3' - 5"
C9	174°	3' - 4 1/2"
C10	173°	3' - 3 3/4"
C11	172°	3' - 3"
C12	171°	3' - 2 1/2"



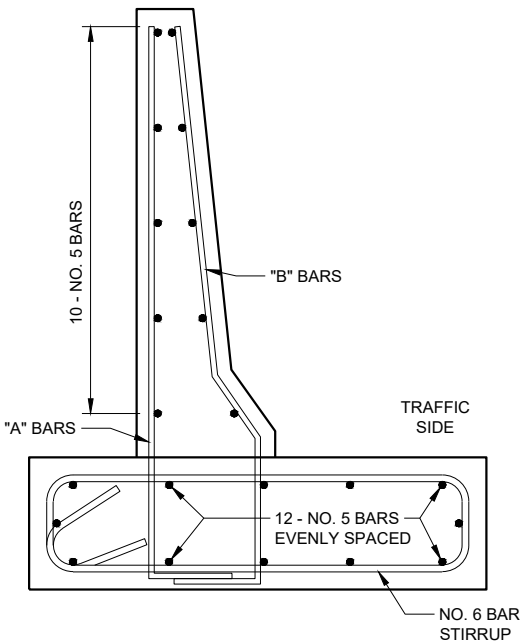
"C" BAR
BENDING DETAIL

"D" BAR CHART
BAR POSITIONS
8 - 12

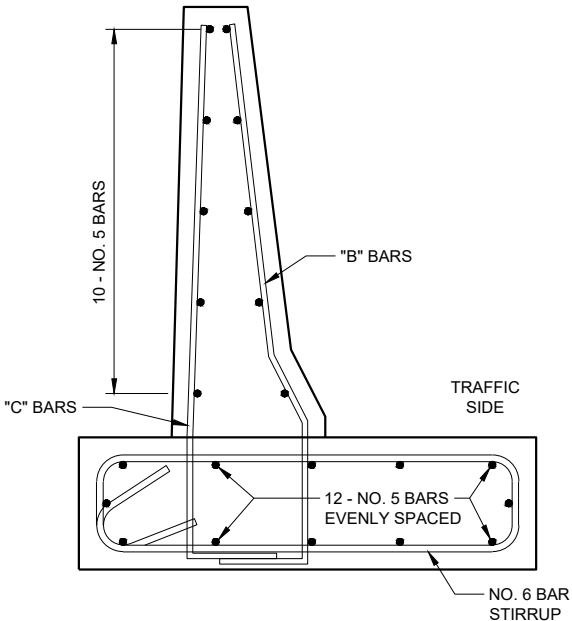
BAR	A	B
D8	170°	3' - 5 1/2"
D9	170°	3' - 4 3/4"
D10	170°	3' - 4"
D11	171°	3' - 3 1/4"
D12	171°	3' - 2 1/2"



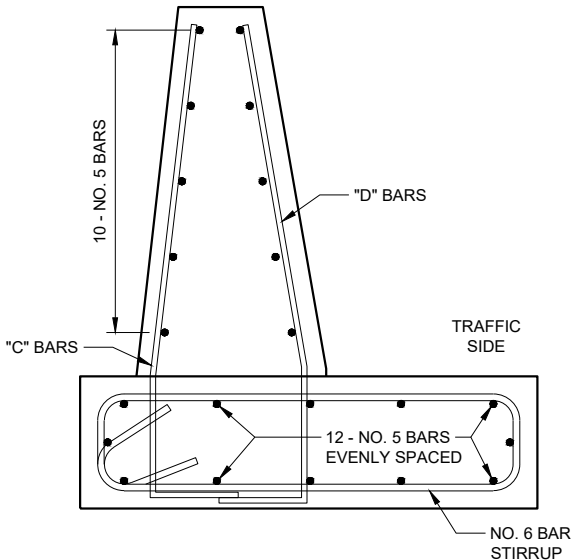
"D" BAR
BENDING DETAIL



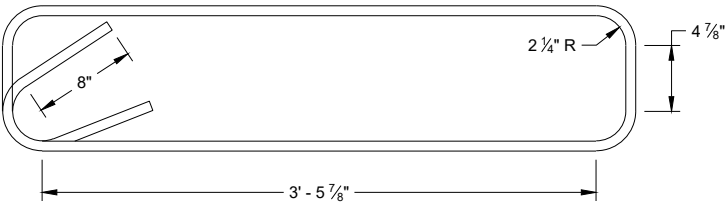
BAR DETAIL
BAR POSITIONS 1 - 2



BAR DETAIL
BAR POSITIONS 3 - 7



BAR DETAIL
BAR POSITIONS 8 - 12



STIRRUP BAR
BENDING DETAIL

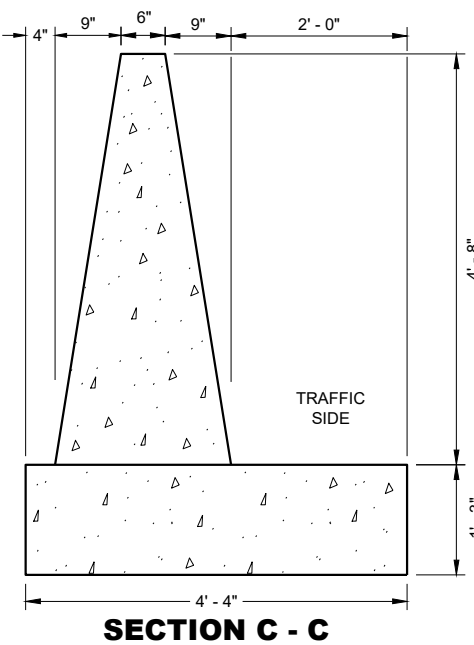
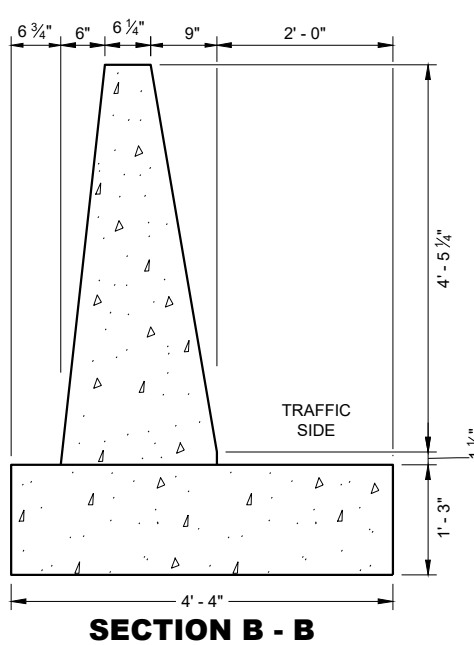
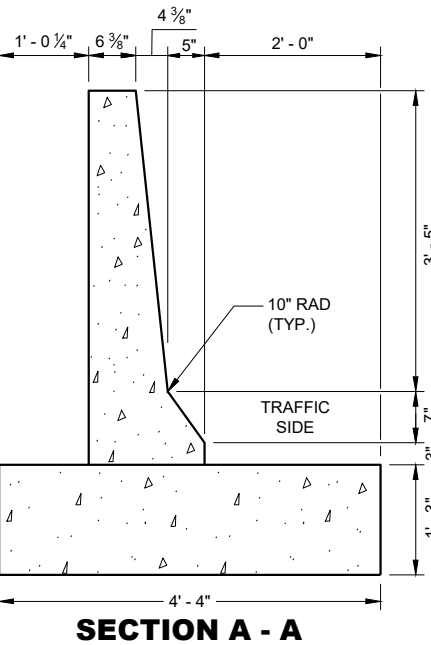
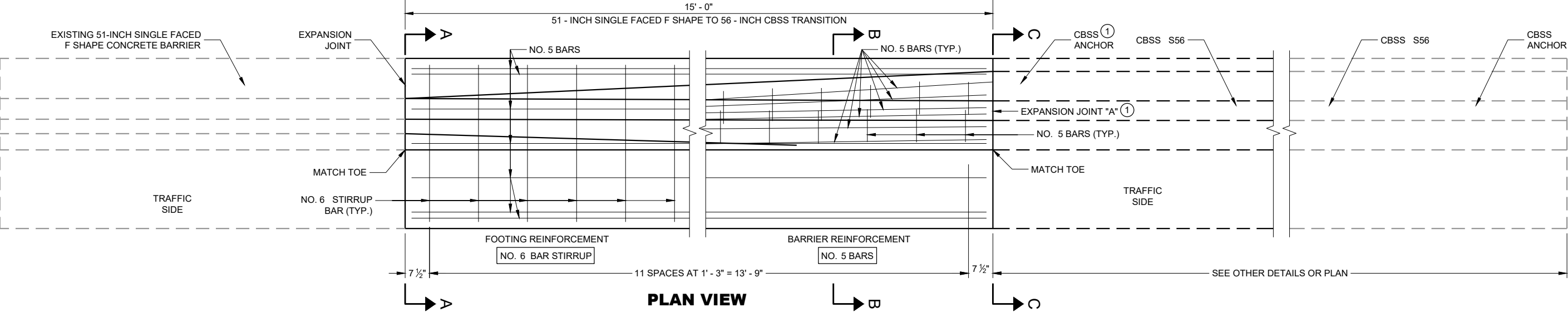
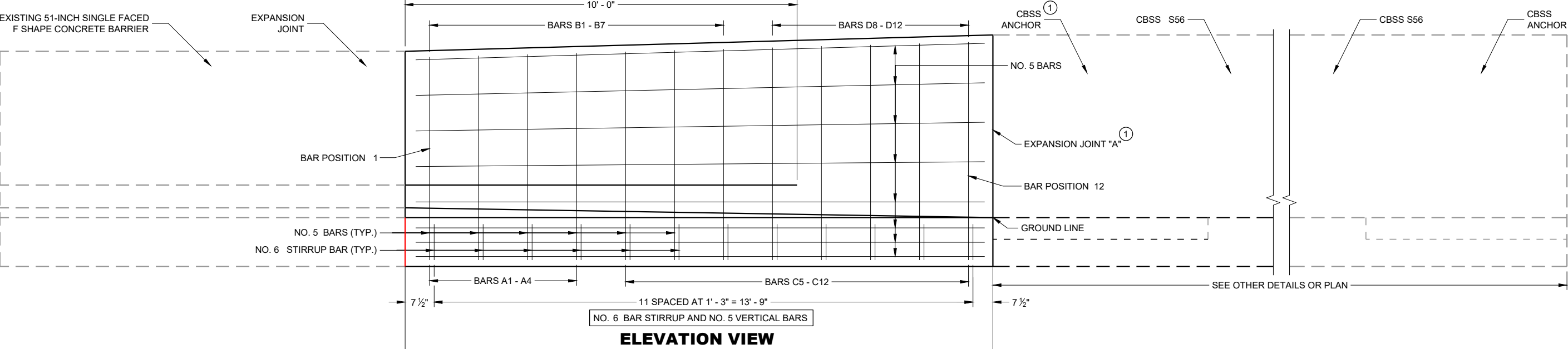
51 - INCH SINGLE FACED F SHAPE
CONCRETE BARRIER TO 42 - INCH SINGLE
SLOPE CONCRETE BARRIER TRANSITION

STATE OF WISCONSIN
DEPARTMENT OF TRANSPORTATION

APPROVED
February 2020 /S/ Rodney Taylor
DATE ROADWAY STANDARDS DEVELOPMENT
ENGINEER
FHWA



SDD 14B36-i 51-Inch Single Faced F Shape to 56-Inch Single Slope Concrete Barrier Transition - Transition Layout



GENERAL NOTES

- CONSTRUCT PER STANDARD SPECIFICATION 603.
- SPLICES OF LONGITUDINAL BARS TO BE 2' LONG AND FIRMLY TIED AND FASTENED TOGETHER UNLESS OTHERWISE NOTED.
- 4000 PSI CONCRETE AIR ENTRAINMENT PER STANDARD SPECIFICATIONS SECTION 501.
- USE 3/4" BEVEL OR 1" RADIUS ON ALL EXPOSED SHARP EDGES UNLESS OTHERWISE NOTED.
- THE NUMBER IN BAR DESIGNATION REPRESENTS THE BARS LOCATION.
- 2" CLEAR COVER TYPICAL.
- ① EXPANSION JOINT "A" MAY BE REPLACED WITH A COLD JOINT PROVIDED THAT 3 FEET OF LAP OF LONGITUDINAL STEEL IS PROVIDED. IF COLD JOINT IS USED, ANCHOR IS NOT REQUIRED.

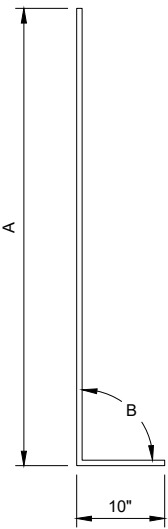
**51 - INCH SINGLE FACED F SHAPE
CONCRETE BARRER TO 56 - INCH SINGLE
SLOPE CONCRETE BARRIER TRANSITION**

STATE OF WISCONSIN
DEPARTMENT OF TRANSPORTATION

SDD 14B36-j 51-Inch Single Faced F Shape to 56-Inch Single Slope Concrete Barrier Transition - Steel Layout

"A" BAR CHART
BAR POSITIONS
1 - 4

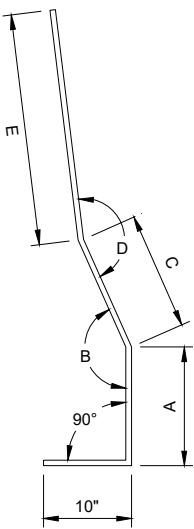
BAR	A	B
A1	90°	5' - 2"
A2	89°	5' - 2 ½"
A3	88°	4' - 11 ½"
A4	87°	4' - 11"



"A" BAR
BENDING DETAIL

"B" BAR CHART
BAR POSITIONS
1 - 7

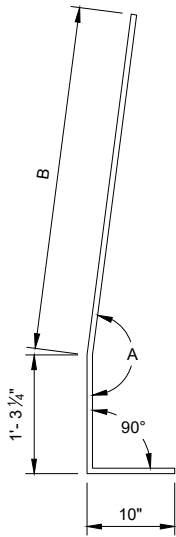
BAR	A	B	C	D	E
B1	1' - 3"	148°	8 ½"	154°	3' - 4"
B2	1' - 3"	149°	8 ½"	156°	3' - 4 ½"
B3	1' - 3"	152°	8 ½"	159°	3' - 4 ¾"
B4	1' - 2 ½"	157°	8 ½"	165°	3' - 5 ½"
B5	1' - 2 ½"	160°	8 ½"	168°	3' - 5 ¾"
B6	1' - 2 ½"	163°	8 ½"	172°	3' - 6"
B7	1' - 2"	166°	8 ½"	175°	3' - 7"



"B" BAR
BENDING DETAIL

"C" BAR CHART
BAR POSITIONS
5 - 12

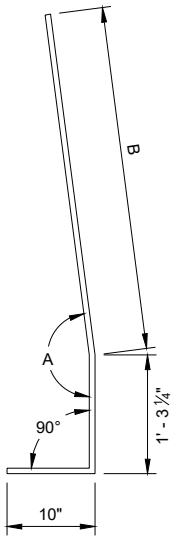
BAR	A	B
C5	177°	4' - 0 ¾"
C6	176°	3' - 6 ½"
C7	175°	3' - 5 ¾"
C8	175°	3' - 5"
C9	174°	3' - 4 ½"
C10	173°	3' - 3 ¾"
C11	172°	3' - 3"
C12	171°	3' - 2 ½"



"C" BAR
BENDING DETAIL

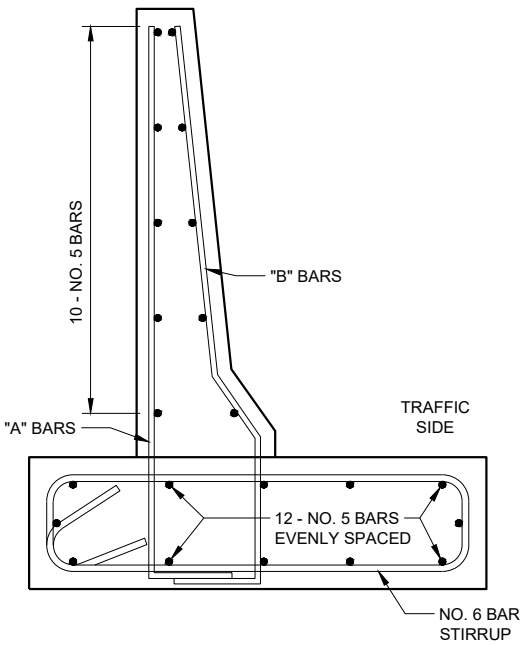
"D" BAR CHART
BAR POSITIONS
8 - 12

BAR	A	B
D8	170°	3' - 5 ½"
D9	170°	4' - 3"
D10	170°	4' - 3 ½"
D11	171°	4' - 3 ¾"
D12	171°	4' - 4"

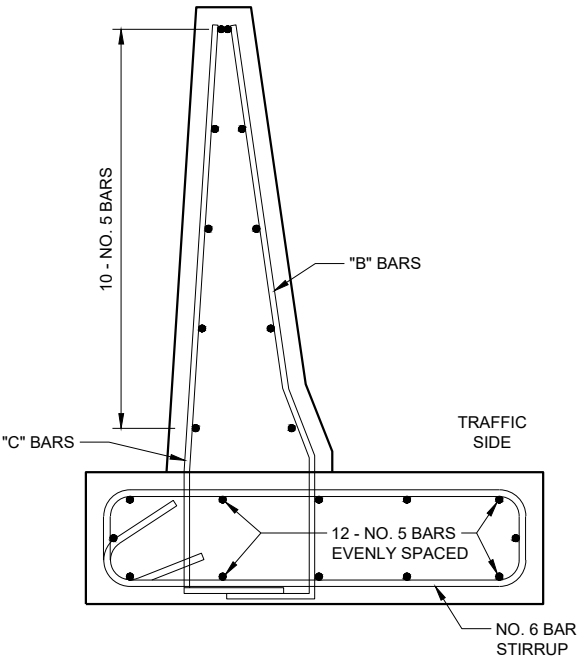


"D" BAR
BENDING DETAIL

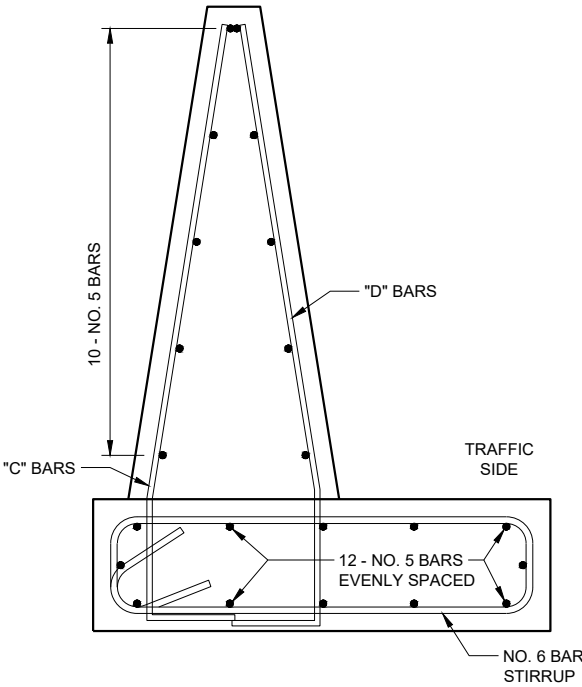
6



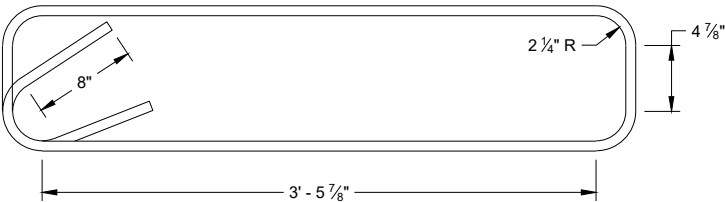
BAR DETAIL
BAR POSITIONS 1 - 2



BAR DETAIL
BAR POSITIONS 3 - 7



BAR DETAIL
BAR POSITIONS 8 - 12



STIRRUP BAR
BENDING DETAIL

6

51 - INCH SINGLE FACED F SHAPE
CONCRETE BARRIER TO 56 - INCH SINGLE
SLOPE CONCRETE BARRIER TRANSITION

STATE OF WISCONSIN
DEPARTMENT OF TRANSPORTATION

APPROVED
February 2020 /S/ Rodney Taylor
DATE ROADWAY STANDARDS DEVELOPMENT
ENGINEER
FHWA

F Shape Concrete Barrier to Single Slope Concrete Barrier Transitions**References:**

NONE

Bid items associated with this drawing:

Bid items for single slope barrier and associated transitions are encoded as follows:

BARRIER BID ITEM TYPES		DESCRIPTION	CODE
<p>Shape ——— S 36 A Height in inches ——— Class ———</p> <p><i>example: Concrete Barrier Type S36A is a 36" single sloped median retaining wall barrier</i></p>	SHAPE	New Jersey shape	NJ
		F shape	F
		Vertical	V
		Single slope barrier	S
<p>Shape ——— F 32 SF to S 32 Height in inches ——— Faces ——— Shape ——— Height in inches ———</p> <p><i>example: Concrete Barrier Transition Type F32SF to S32 is a transition from 32" single faced F barrier to a 32" single sloped barrier</i></p>	CLASS	Standard barrier section	none
		Median retaining wall	A
		Short barrier section	B
		Roadside retaining wall	C
	FACES	Double faced barrier	DF
		Single faced barrier	SF

<u>ITEM NUMBER</u>	<u>DESCRIPTION</u>	<u>UNIT</u>
603.3211	Concrete Barrier Transition Type F32SF to S32	EACH
603.3213	Concrete Barrier Transition Type F32SF to S36	EACH
603.3255	Concrete Barrier Transition Type F42SF to S42	EACH
603.3275	Concrete Barrier Transition Type F51SF to S42	EACH
603.3279	Concrete Barrier Transition Type F51SF to S56	EACH
603.3200 - 3299	Concrete Barrier Transition (type).....	EACH

Standardized Special Provisions associated with this drawing:

STSP NUMBER TITLE
NONE

Other SDDs associated with this drawing:

[SDD 14B32](#) Concrete Barrier Single Slope
[SDD 14B34](#) Short Concrete Barrier Sections (Use for runs of less than 40')

Design Notes:

Use these details when a transition from a single faced F shape to a single slope barrier is needed.

Contact Person:

Erik Emerson (608) 266-2842