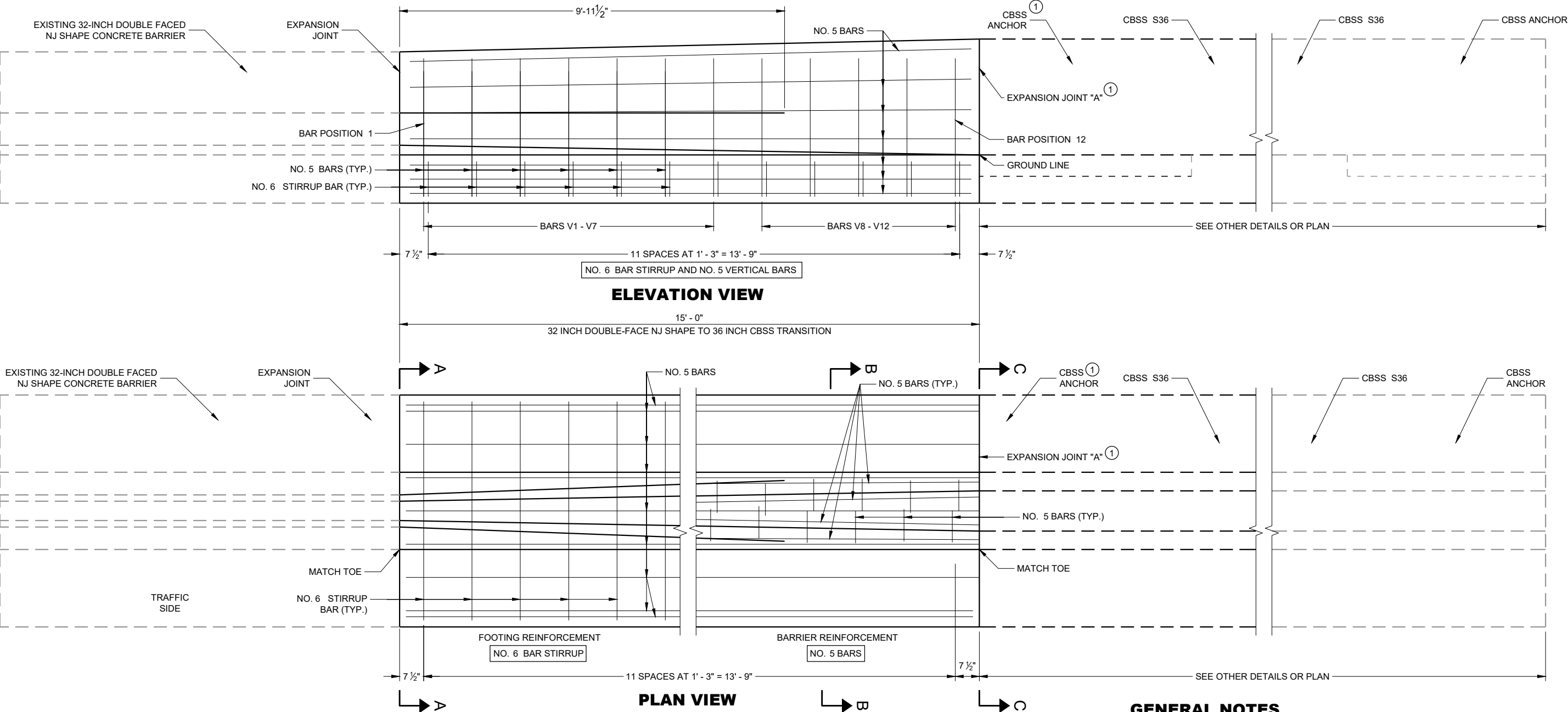


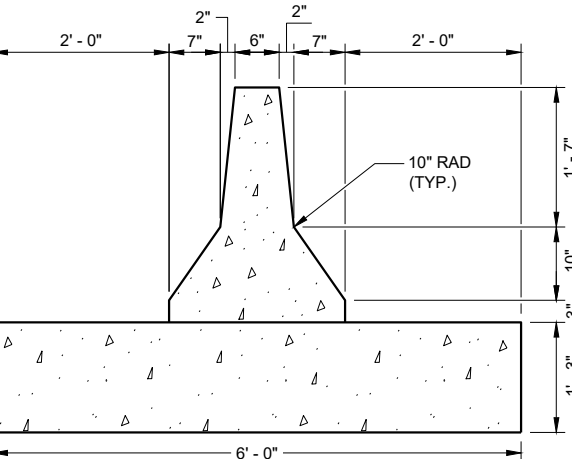


SDD 14B37-a 32" Double Faced NJ Shape Concrete Barrier to 36" Single Slope Concrete Barrier Transition Layout

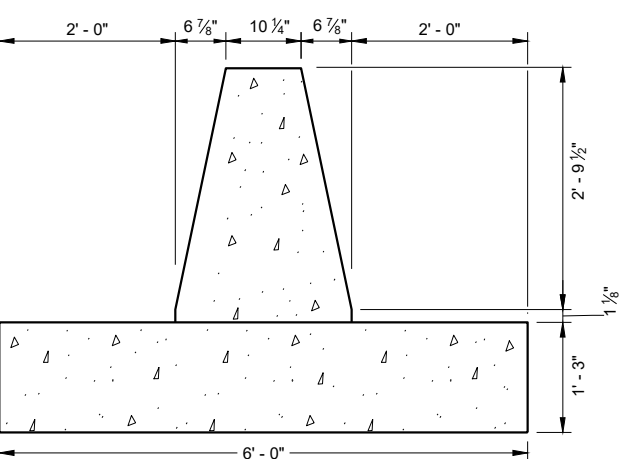


GENERAL NOTES

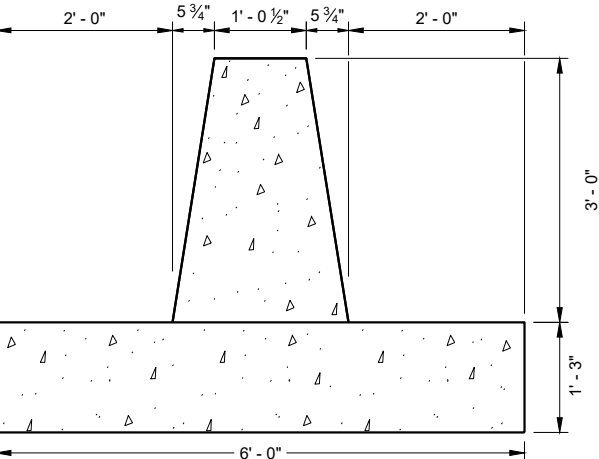
- CONSTRUCT PER STANDARD SPECIFICATION 603.
- SPLICES OF LONGITUDINAL BARS TO BE 2' LONG AND FIRMLY TIED AND FASTENED TOGETHER UNLESS OTHERWISE NOTED.
- 4000 PSI CONCRETE AIR ENTRAINMENT PER STANDARD SPECIFICATIONS SECTION 501.
- USE 3/4" BEVEL OR 1" RADIUS ON ALL EXPOSED SHARP EDGES UNLESS OTHERWISE NOTED.
- THE NUMBER IN BAR DESIGNATION REPRESENTS THE BARS LOCATION.
- 2" CLEAR COVER TYPICAL.
- ① EXPANSION JOINT "A" MAY BE REPLACED WITH A COLD JOINT PROVIDED THAT 3 FEET OF LAP OF LONGITUDINAL STEEL IS PROVIDED. IF COLD JOINT IS USED, ANCHOR IS NOT REQUIRED.



SECTION A - A



SECTION B - B



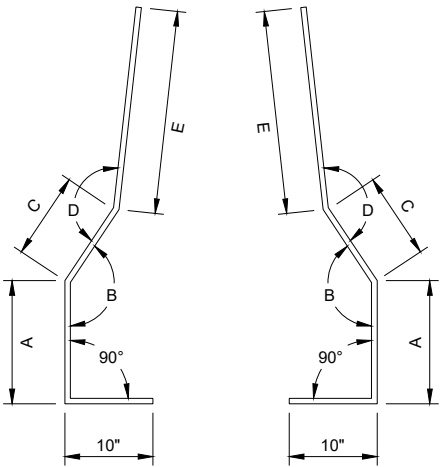
SECTION C - C

32 - INCH DOUBLE FACED NJ SHAPE
CONCRETE BARRIER TO 36 - INCH SINGLE
SLOPE CONCRETE BARRIER TRANSITION

STATE OF WISCONSIN
DEPARTMENT OF TRANSPORTATION

**BAR CHART
BAR POSITIONS
1 - 7**

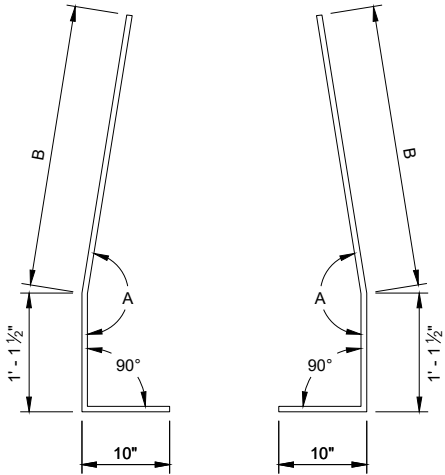
| BAR | A | B | C | D | E |
|-----|-----------|------|-----------|------|-----------|
| V1 | 1' - 2 ¼" | 148° | 1' - 1 ¼" | 154° | 1' - 5 ½" |
| V2 | 1' - 2 ¼" | 151° | 1' - 1" | 158° | 1' - 6" |
| V3 | 1' - 2" | 154° | 1' - ¾" | 161° | 1' - 6 ½" |
| V4 | 1' - 2" | 157° | 1' - ½" | 164° | 1' - 7" |
| V5 | 1' - 1 ½" | 159° | 1' - ¼" | 168° | 1' - 8" |
| V6 | 1' - 1 ½" | 162° | 1' - ¼" | 173° | 1' - 8" |
| V7 | 1' - 1 ½" | 165° | 1' - ¼" | 176° | 1' - 8" |



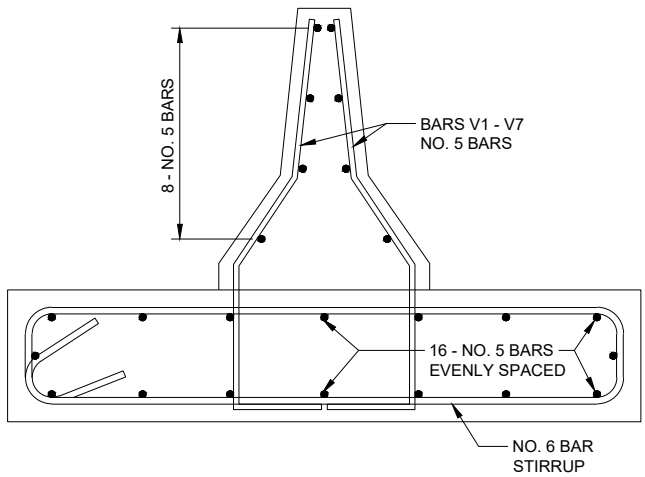
**BAR BENDING DETAIL
BARS V1 - V7**

**BAR CHART
BAR POSITIONS
8 - 12**

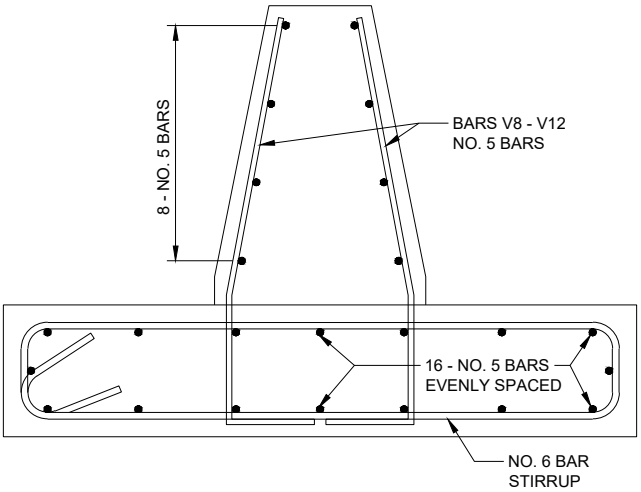
| BAR | A | B |
|-----|------|-----------|
| V8 | 169° | 2' - 8" |
| V9 | 170° | 2' - 8 ½" |
| V10 | 170° | 2' - 9" |
| V11 | 171° | 2' - 9" |
| V12 | 171° | 2' - 9 ½" |



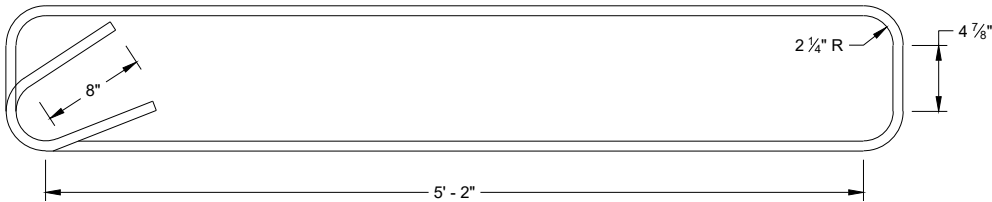
**BAR BENDING DETAIL
BARS V8 - V12**



**BAR DETAIL
BAR POSITIONS V1 - V7**



**BAR DETAIL
BAR POSITIONS V8 - V12**



**STIRRUP BAR
BENDING DETAIL**

**32 - INCH DOUBLE FACED NJ SHAPE
CONCRETE BARRIER TO 36 - INCH SINGLE
SLOPE CONCRETE BARRIER TRANSITION**

STATE OF WISCONSIN
DEPARTMENT OF TRANSPORTATION

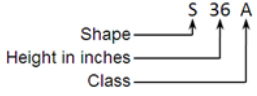
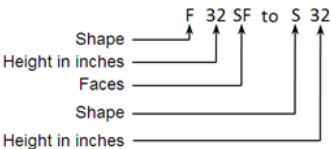
APPROVED
February 2020 /S/ Rodney Taylor
DATE ROADWAY STANDARDS DEVELOPMENT
ENGINEER
FHWA

Double-Faced NJ Shape Concrete Barrier to Single Slope Concrete Barrier Transitions**References:**

NONE

Bid items associated with this drawing:

Bid items for single slope barrier and associated transitions are encoded as follows:

| BARRIER BID ITEM TYPES | | DESCRIPTION | CODE |
|---|-------|--------------------------|------|
|  <p><i>example: Concrete Barrier Type S36A is a 36" single sloped median retaining wall barrier</i></p> | SHAPE | New Jersey shape | NJ |
| | | F shape | F |
| | | Vertical | V |
| | | Single slope barrier | S |
|  <p><i>example: Concrete Barrier Transition Type F32SF to S32 is a transition from 32" single faced F barrier to a 32" single sloped barrier</i></p> | CLASS | Standard barrier section | none |
| | | Median retaining wall | A |
| | | Short barrier section | B |
| | | Roadside retaining wall | C |
| | FACES | Double faced barrier | DF |
| | | Single faced barrier | SF |

| <u>ITEM NUMBER</u> | <u>DESCRIPTION</u> | <u>UNIT</u> |
|--------------------|--|-------------|
| 603.3311 | Concrete Barrier Transition Type NJ32DF to S32 | EACH |
| 603.3313 | Concrete Barrier Transition Type NJ32DF to S36 | EACH |
| 603.3355 | Concrete Barrier Transition Type NJ42DF to S42 | EACH |
| 603.3375 | Concrete Barrier Transition Type NJ51DF to S42 | EACH |
| 603.3300 - 3399 | Concrete Barrier Transition (type)..... | EACH |

Standardized Special Provisions associated with this drawing:STSP NUMBER TITLE

NONE

Other SDDs associated with this drawing:

[SDD 14B32](#) Concrete Barrier Single Slope

[SDD 14B34](#) Short Concrete Barrier Sections (Use for runs of less than 40')

Design Notes:

Use these details when a transition from double faced New Jersey shape to single slope barrier is needed.

Contact Person:

Erik Emerson (608) 266-2842