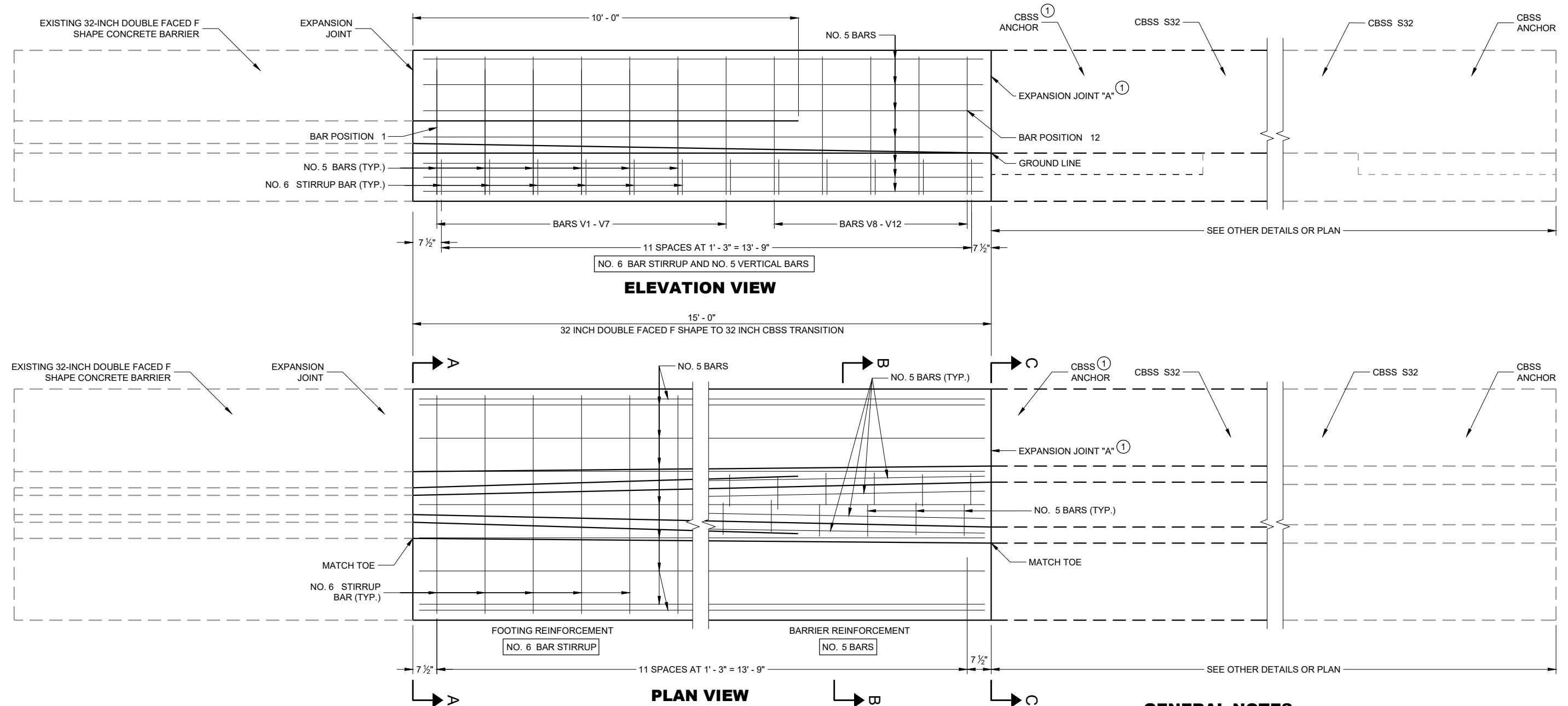


SDD 14B38-a 32" Double Faced F Shape Concrete Barrier to 32" Single Slope Concrete Barrier Transition Layout



GENERAL NOTES

CONSTRUCT PER STANDARD SPECIFICATION 603.

SPLICES OF LONGITUDINAL BARS TO BE 2' LONG AND FIRMLY TIED AND FASTENED TOGETHER UNLESS OTHERWISE NOTED.

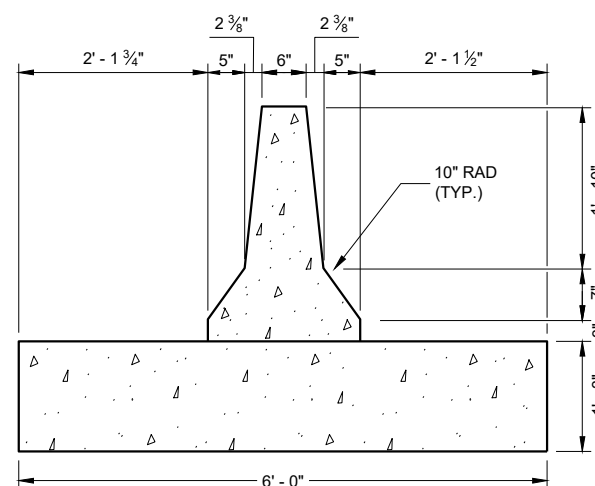
4000 PSI CONCRETE AIR ENTRAINMENT PER STANDARD SPECIFICATIONS SECTION 501.

USE 3/4" BEVEL OR 1" RADIUS ON ALL EXPOSED SHARP EDGES UNLESS OTHERWISE NOTED.

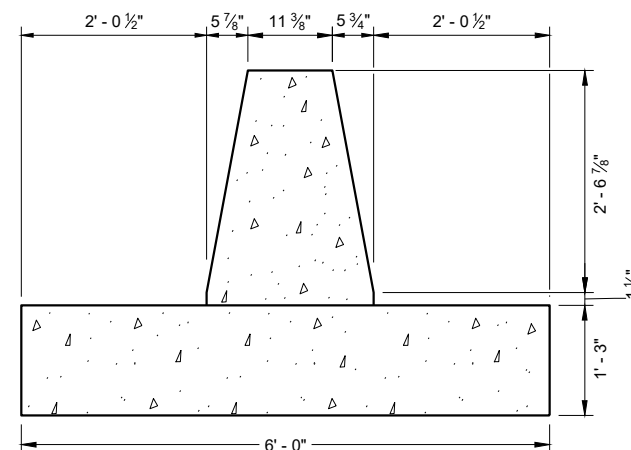
THE NUMBER IN BAR DESIGNATION REPRESENTS THE BARS LOCATION.

2" CLEAR COVER TYPICAL.

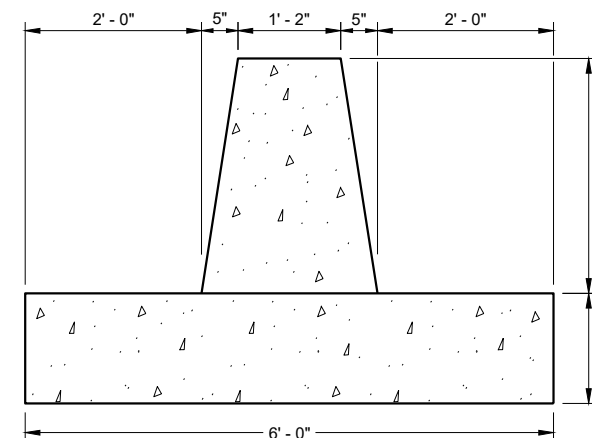
- ① EXPANSION JOINT "A" MAY BE REPLACED WITH A COLD JOINT PROVIDED THAT 3 FEET OF LAP OF LONGITUDINAL STEEL IS PROVIDED. IF COLD JOINT IS USED, ANCHOR IS NOT REQUIRED.



SECTION A - A



SECTION B - B



SECTION C - C

**32 - INCH DOUBLE FACED F SHAPE
CONCRETE BARRER TO 32 - INCH SINGLE
SLOPE CONCRETE BARRIER TRANSITION**

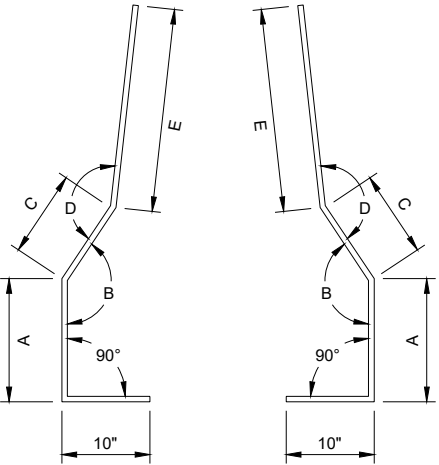
STATE OF WISCONSIN
DEPARTMENT OF TRANSPORTATION



SDD 14B38-b 32" Double Faced F Shape Concrete Barrier to 32" Single Slope Concrete Barrier Transition-Steel Layout

BAR CHART
BAR POSITIONS
1 - 7

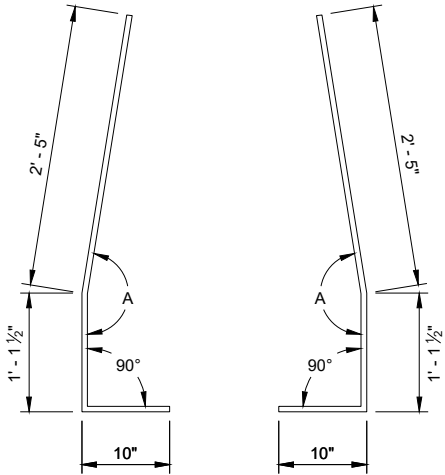
BAR	A	B	C	D	E
B1	1' - 2"	148°	10"	154°	1' - 7 3/4"
B2	1' - 2"	154°	9 3/4"	162°	1' - 7 3/4"
B3	1' - 2"	154°	9 3/4"	163°	1' - 7 1/2"
B4	1' - 2"	157°	9 3/4"	165°	1' - 7 1/2"
B5	1' - 1 1/2"	161°	10"	169°	1' - 7 1/2"
B6	1' - 1 1/2"	163°	10"	172°	1' - 7 1/2"
B7	1' - 1 1/2"	166°	10"	175°	1' - 7 1/2"



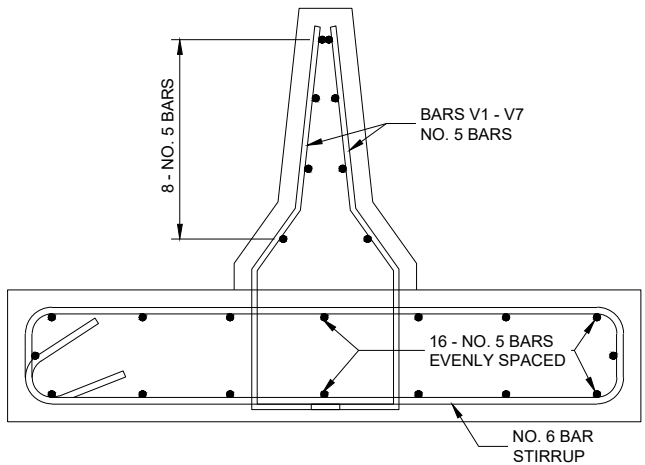
BAR BENDING DETAIL
BARS V1 - V7

BAR CHART
BAR POSITIONS
8 - 12

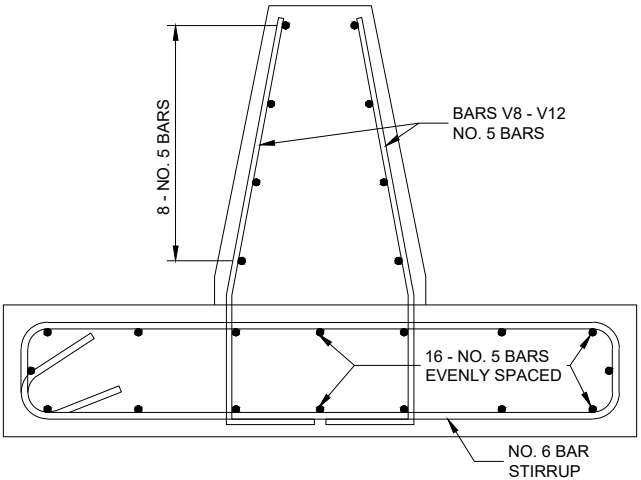
BAR	A
D8	170°
D9	170°
D10	170°
D11	171°
D12	171°



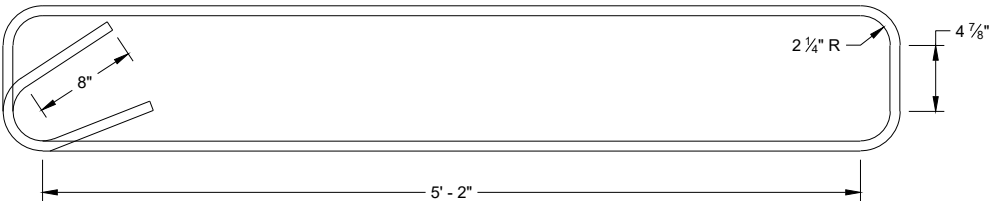
BAR BENDING DETAIL
BARS V8 - V12



BAR DETAIL
BAR POSITIONS V1 - V7



BAR DETAIL
BAR POSITIONS V8 - V12



STIRRUP BAR
BENDING DETAIL

32-INCH DOUBLE FACED F SHAPE
CONCRETE BARRIER TO 32-INCH SINGLE
SLOPE CONCRETE BARRIER TRANSITION

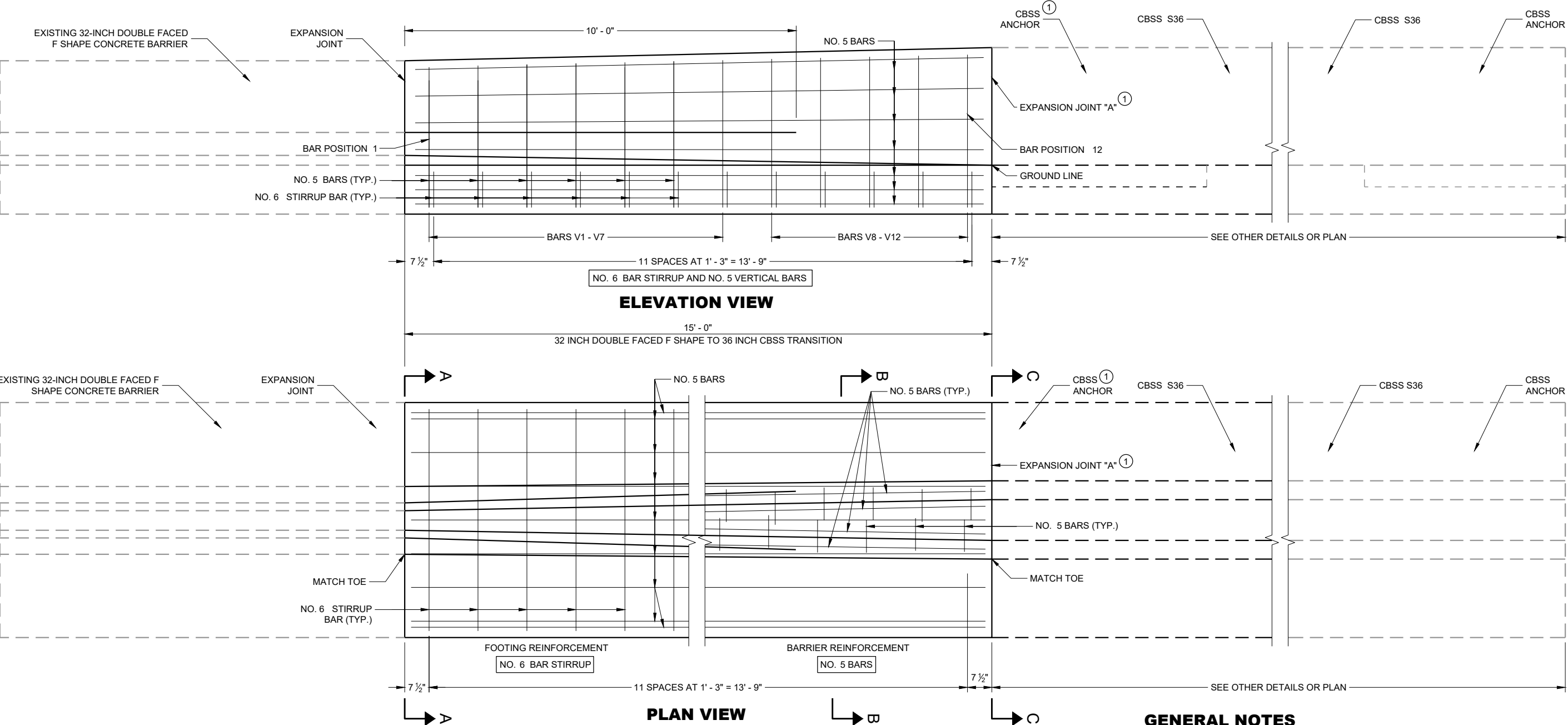
STATE OF WISCONSIN
DEPARTMENT OF TRANSPORTATION

APPROVED
0/0/00 DATE /S/ Rodney Taylor
ROADWAY STANDARDS DEVELOPMENT
ENGINEER

FHWA

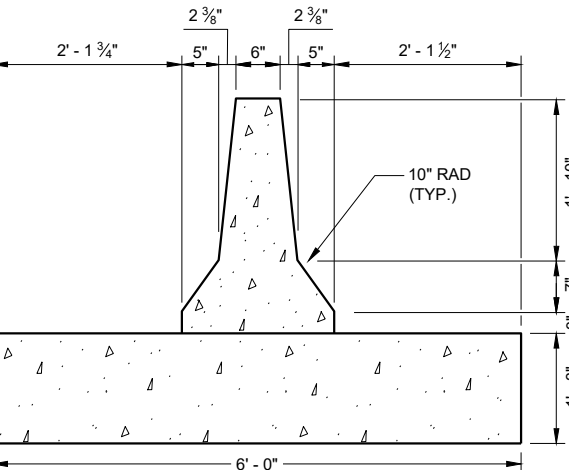


SDD 14B38-c 32" Double Faced F Shape Concrete Barrier to 36" Single Slope Concrete Barrier Transition Layout

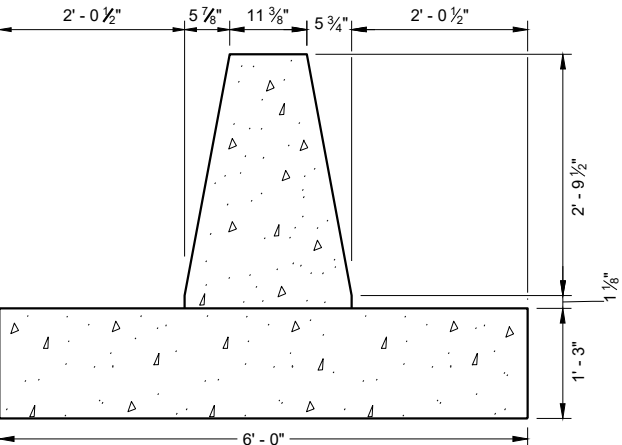


GENERAL NOTES

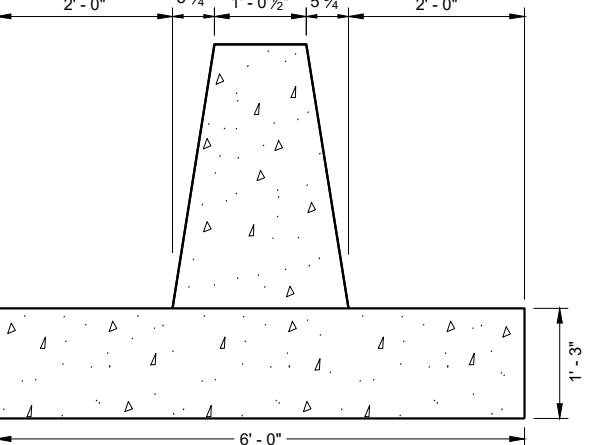
- CONSTRUCT PER STANDARD SPECIFICATION 603.
- SPLICES OF LONGITUDINAL BARS TO BE 2' LONG AND FIRMLY TIED AND FASTENED TOGETHER UNLESS OTHERWISE NOTED.
- 4000 PSI CONCRETE AIR ENTRAINMENT PER STANDARD SPECIFICATIONS SECTION 501.
- USE 3/4" BEVEL OR 1" RADIUS ON ALL EXPOSED SHARP EDGES UNLESS OTHERWISE NOTED.
- THE NUMBER IN BAR DESIGNATION REPRESENTS THE BARS LOCATION.
- 2" CLEAR COVER TYPICAL.
- ① EXPANSION JOINT "A" MAY BE REPLACED WITH A COLD JOINT PROVIDED THAT 3 FEET OF LAP OF LONGITUDINAL STEEL IS PROVIDED. IF COLD JOINT IS USED, ANCHOR IS NOT REQUIRED.



SECTION A - A



SECTION B - B



SECTION C - C

32 - INCH DOUBLE FACED F SHAPE
CONCRETE BARRIER TO 36 - INCH SINGLE
SLOPE CONCRETE BARRIER TRANSITION

STATE OF WISCONSIN
DEPARTMENT OF TRANSPORTATION

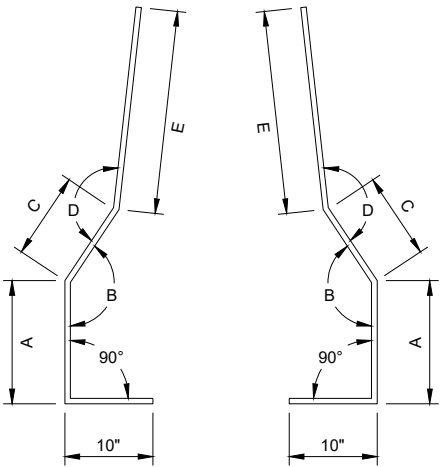
SDD 14B38 - 02c

SDD 14B38 - 02c

SDD 14B38-d 32" Double Faced F Shape Concrete Barrier to 36" Single Slope Concrete Barrier Transition-Steel Layout

**BAR CHART
BAR POSITIONS
1 - 7**

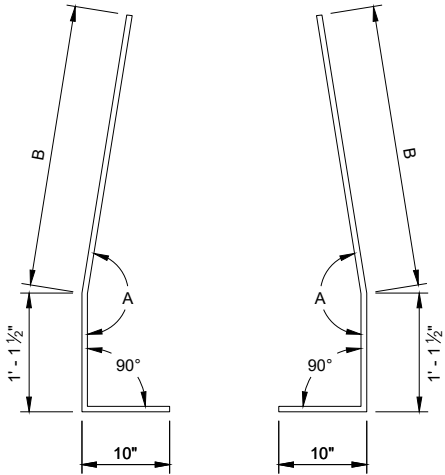
BAR	A	B	C	D	E
B1	1' - 2"	148°	10"	154°	1' - 8 ¼"
B2	1' - 2"	154°	9 ¾"	162°	1' - 8 ½"
B3	1' - 2"	154°	9 ¾"	163°	1' - 8 ¾"
B4	1' - 2"	157°	9 ¾"	165°	1' - 9"
B5	1' - 1 ½"	161°	10"	169°	1' - 9 ¼"
B6	1' - 1 ½"	163°	10"	172°	1' - 9 ½"
B7	1' - 1 ½"	166°	10"	175°	1' - 10"



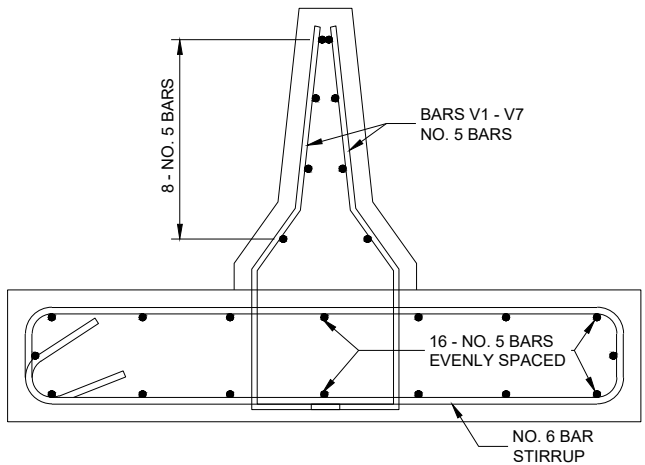
**BAR BENDING DETAIL
BARS V1 - V7**

**BAR CHART
BAR POSITIONS
8 - 12**

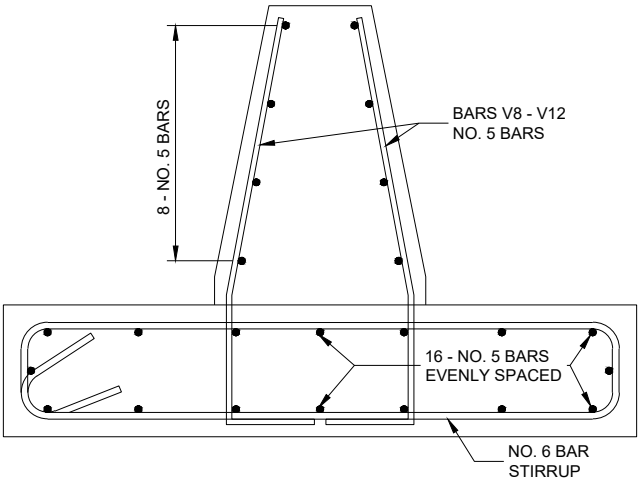
BAR	A	B
D8	170°	2' - 7 ¾"
D9	170°	2' - 8 ½"
D10	170°	2' - 8 ½"
D11	171°	2' - 9"
D12	171°	2' - 9 ½"



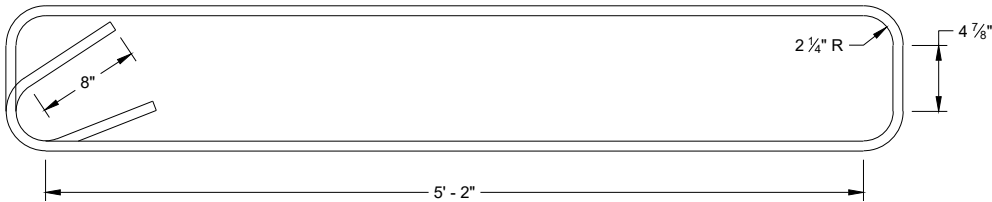
**BAR BENDING DETAIL
BARS V8 - V12**



**BAR DETAIL
BAR POSITIONS V1 - V7**



**BAR DETAIL
BAR POSITIONS V8 - V12**



**STIRRUP BAR
BENDING DETAIL**

**32-INCH DOUBLE FACED F SHAPE
CONCRETE BARRIER TO 32-INCH SINGLE
SLOPE CONCRETE BARRIER TRANSITION**

STATE OF WISCONSIN
DEPARTMENT OF TRANSPORTATION

APPROVED
February 2020 /S/ Rodney Taylor
DATE ROADWAY STANDARDS DEVELOPMENT
ENGINEER
FHWA

Double-Faced F Shape Concrete Barrier to Single Slope Concrete Barrier Transitions**References:**

NONE

Bid items associated with this drawing:

Bid items for single slope barrier and associated transitions are encoded as follows:

BARRIER BID ITEM TYPES		DESCRIPTION	CODE
<p>Shape ——— S 36 A Height in inches ——— Class ———</p> <p><i>example: Concrete Barrier Type S36A is a 36" single sloped median retaining wall barrier</i></p>	SHAPE	New Jersey shape	NJ
		F shape	F
		Vertical	V
		Single slope barrier	S
<p>Shape ——— F 32 SF to S 32 Height in inches ——— Faces ——— Shape ——— Height in inches ———</p> <p><i>example: Concrete Barrier Transition Type F32SF to S32 is a transition from 32" single faced F barrier to a 32" single sloped barrier</i></p>	CLASS	Standard barrier section	none
		Median retaining wall	A
		Short barrier section	B
		Roadside retaining wall	C
	FACES	Double faced barrier	DF
		Single faced barrier	SF

<u>ITEM NUMBER</u>	<u>DESCRIPTION</u>	<u>UNIT</u>
603.3411	Concrete Barrier Transition Type F32DF to S32	EACH
603.3413	Concrete Barrier Transition Type F32DF to S36	EACH
603.3455	Concrete Barrier Transition Type F42DF to S42	EACH
603.3475	Concrete Barrier Transition Type F51DF to S42	EACH
603.3400 - 3499	Concrete Barrier Transition (type).....	EACH

Standardized Special Provisions associated with this drawing:

STSP NUMBER TITLE

NONE

Other SDDs associated with this drawing:

[SDD 14B32](#) Concrete Barrier Single Slope
[SDD 14B34](#) Short Concrete Barrier Sections (Use for runs of less than 40')

Design Notes:

Use these details when a transition from double faced F shape to single slope barrier is needed.

Contact Person:

Erik Emerson (608) 266-2842