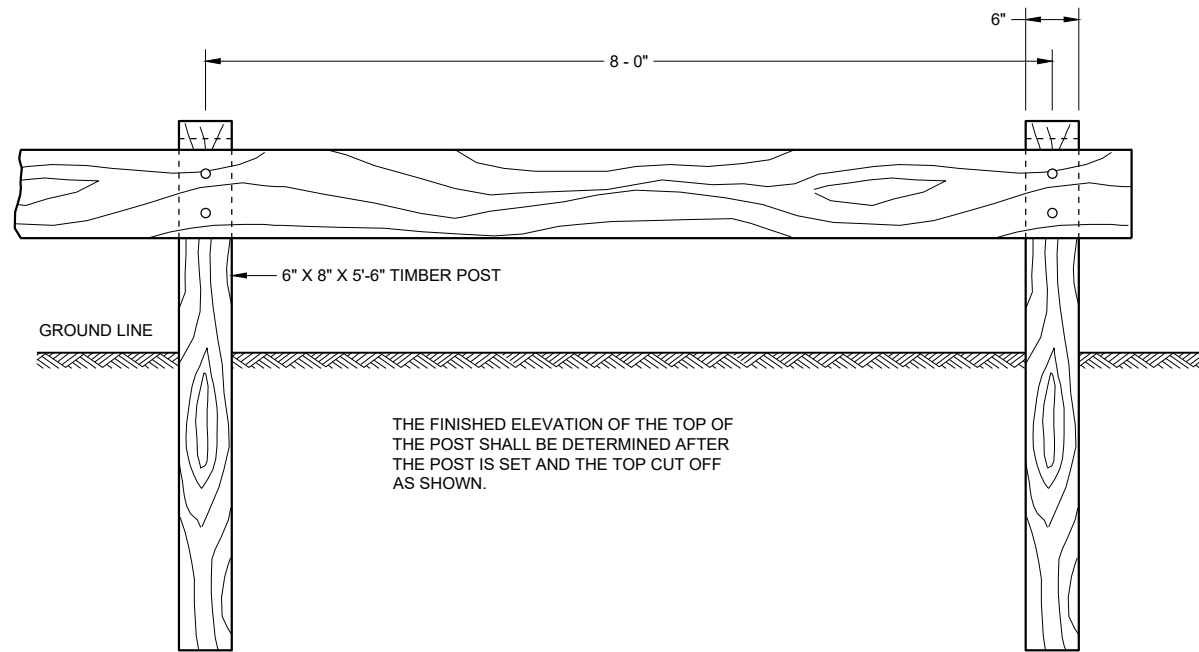


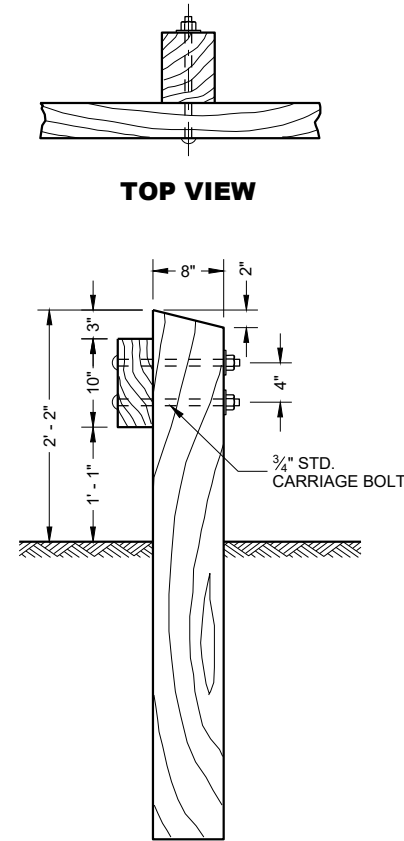


SDD 14C01 Timber Rail Guard Fence, Curb and Guard Post and Marker Post

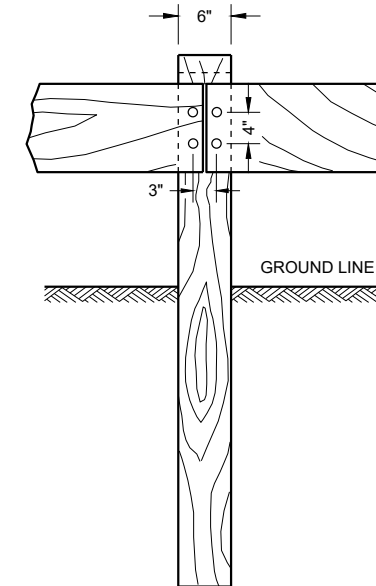


THE FINISHED ELEVATION OF THE TOP OF THE POST SHALL BE DETERMINED AFTER THE POST IS SET AND THE TOP CUT OFF AS SHOWN.

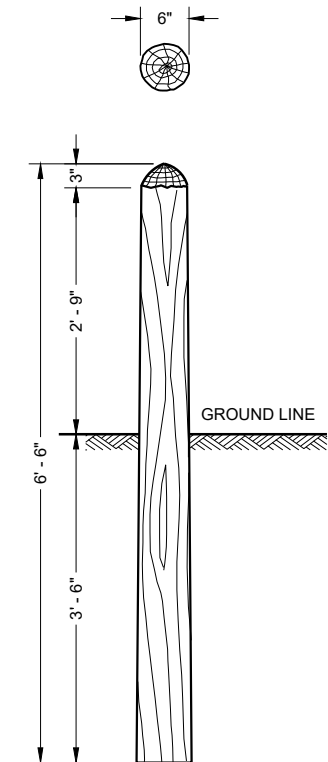
FRONT VIEW



SIDE VIEW

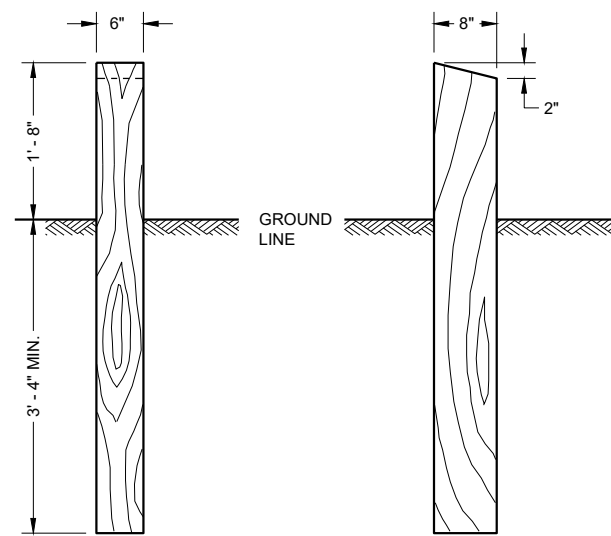


SPLICE POST



RUSTIC MARKER POST

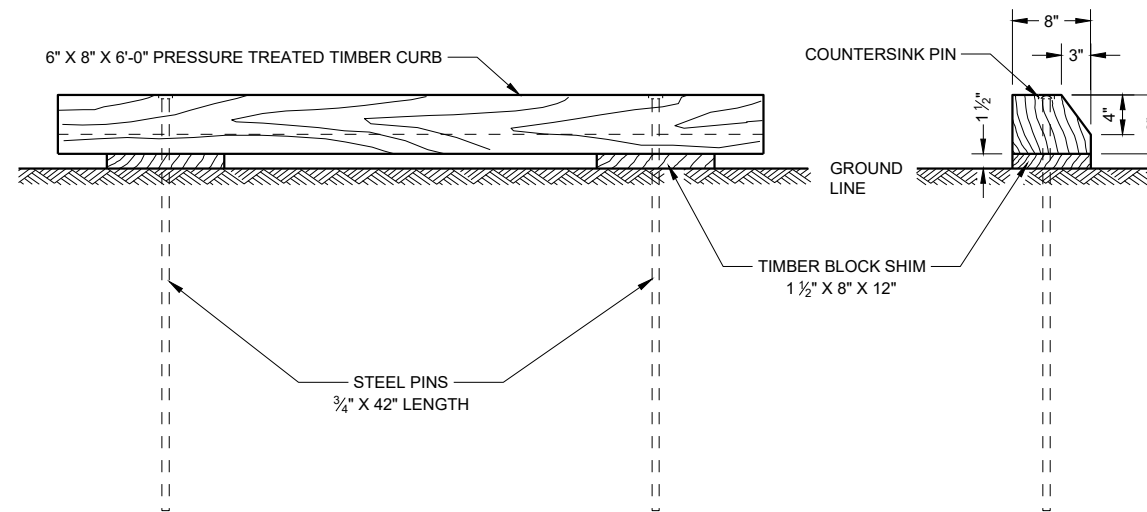
TIMBER RAIL GUARD FENCE (PARKING LOT PROTECTION)



FRONT VIEW

SIDE VIEW

TIMBER RAIL GUARD POST
(REQUIREMENTS SHALL BE THE SAME AS POSTS FOR TIMBER RAIL GUARD FENCE)



FRONT VIEW

SIDE VIEW

TREATED TIMBER CURB

GENERAL NOTES

DETAILS OF CONSTRUCTION, MATERIALS AND WORKMANSHIP NOT SHOWN ON THIS DRAWING SHALL CONFORM TO STANDARD SPECIFICATION SECTION 615. ALL POST AND RAIL DIMENSIONS ARE NOMINAL DIMENSIONS.

**TIMBER RAIL GUARD FENCE,
CURB AND GUARD POST
AND MARKER POST**

STATE OF WISCONSIN
DEPARTMENT OF TRANSPORTATION

APPROVED
May 2021 /S/ Joseph Coughlin
DATE ROADSIDE FACILITIES ENGINEER

FHWA

Timber Rail Guard Fence, Curb and Guard Post and Marker Post

References:

[Standard Spec 615](#)

Bid items associated with this drawing:

<u>ITEM NUMBER</u>	<u>DESCRIPTION</u>	<u>UNIT</u>
615.0100	Guard Fence Timber Rail	LF
615.0200	Curbs Treated Timber	EACH
615.0300	Guard Posts Timber	EACH

Standardized Special Provisions associated with this drawing:

<u>STSP NUMBER</u>	<u>TITLE</u>
NONE	

Other SDDs associated with this drawing:

NONE

Design Notes:

Standard detail is appropriate for use in rest areas or waysides.

Contact Person:

Joseph Coughlin (608) 261-8975