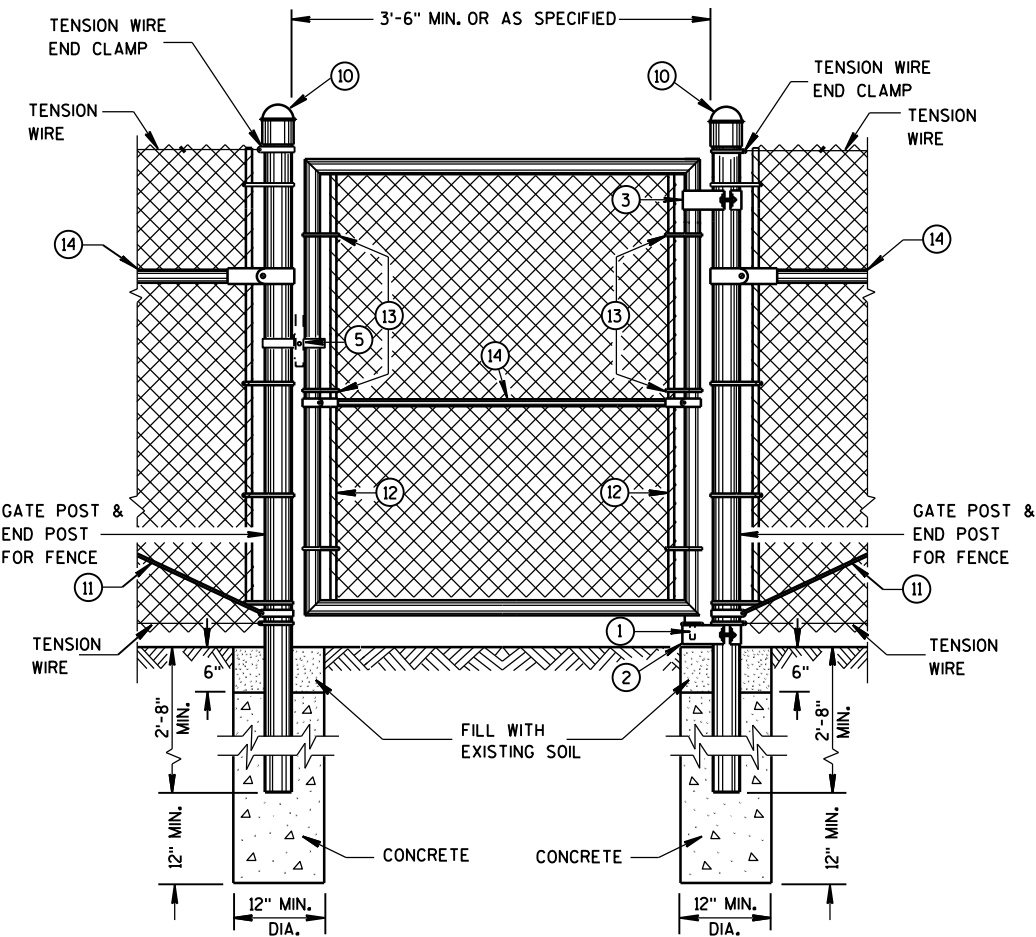


**VEHICLE GATE DETAIL**



**PEDESTRIAN GATE DETAIL**

- LEGEND**
1. STRAIGHT PLUG
  2. BOTTOM HINGE
  3. TOP HINGE
  4. PLUNGER ROD
  5. FULCRUM LATCH
  6. FORK CATCH \*
  7. PLUNGER ROD CATCH
  8. LOCK KEEPER GUIDE
  9. LOCK KEEPER
  10. DOME TOPS
  11. TRUSS RODS
  12. TENSION BAR
  13. TENSION BANDS
  14. BRACE RAIL
- \*NOT REQUIRED ON SINGLE SWING PEDESTRIAN GATE

**GENERAL NOTES**

FENCE POSTS INSTALLED ON CONCRETE WALLS SHALL BE ANCHORED INTO EMBEDDED METAL SLEEVES OR CORED HOLE BY FILLING THE ANNULAR SPACE WITH PEA GRAVEL FOLLOWED BY AN EPOXY RESIN ADHESIVE. THE EPOXY RESIN ADHESIVE SHALL CONFORM TO THE REQUIREMENTS OF AASHTO M 235, CLASS A, B OR C.

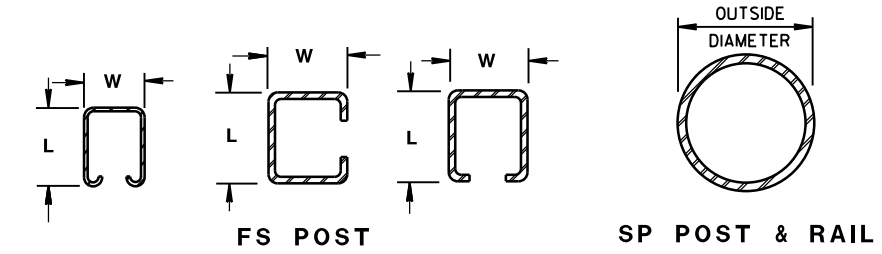
USE FENCE FABRIC KNUCKLED AT BOTH SELVAGES.

FOR LEAF GATES GREATER THAN 8 FEET WIDE, INSTALL INTERIOR VERTICAL BRACE RAIL AT 8 FOOT INTERVALS.

FOR FABRIC HEIGHTS GREATER THAN 8 FEET, INSTALL INTERIOR HORIZONTAL BRACE RAILS TO LEAF GATE.

MAXIMUM SAG FOR OUTER GATE MEMBER SHALL NOT EXCEED THE GREATER OF 1% OF THE LEAF GATE WIDTH OR 2 INCHES.

USE TYPE 2, CLASS 3, MARCELLED/CRIMPED, TENSION WIRE PER ASTM A 817.



**CROSS SECTIONS OF POSTS AND RAILS**

**ROLLED-FORMED STEEL FENCE POST (2.0 OZ./SQ. FT. COATING)**

POST TYPE	LENGTH (L) INCH	WIDTH (W) INCH	WEIGHT LBS/FT
FS1	1.625	1.25	1.35
FS2†	1.875	1.625	1.850
FS2	1.875	1.625	2.400
FS3	2.250	1.700	2.780

**ROUND STEEL FENCE POST (1.8 OZ./SQ. FT. COATING)**

POST TYPE	OUTSIDE DIMENSION INCH	WALL THICKNESS INCH	WEIGHT LBS/FT
SP1	1.660	0.140	2.270
SP2	1.900	0.145	2.720
SP3	2.375	0.154	3.650
SP4	2.875	0.203	5.800
SP5	4.000	0.226	9.120
SP6	6.625	0.280	18.990
SP7	8.625	0.322	28.580

**REQUIRED FENCE POST SIZES**

USE	FABRIC HEIGHTS FEET	POST TYPE
TERMINAL POSTS **	LESS THAN OR EQUAL TO 6 FT.	SP3
	GREATER THAN OR EQUAL TO 6 FT.	SP4
LINE POSTS	LESS THAN OR EQUAL TO 6 FT.	SP2
	LESS THAN OR EQUAL TO 8 FT.	SP3
	GREATER THAN OR EQUAL TO 8 FT.	SP4
	LESS THAN OR EQUAL TO 8 FT.	FS2 OR FS2†
	GREATER THAN OR EQUAL TO 8 FT.	FS3

**REQUIRED POST SIZE FOR GATES**

USE	LEAF WIDTHS FEET	POST TYPE
GATES	LESS THAN OR EQUAL TO 6 FT.	SP4
	LESS THAN OR EQUAL TO 13 FT.	SP5
	LESS THAN OR EQUAL TO 18 FT.	SP6
	LESS THAN OR EQUAL TO 23 FT.	SP7

**BRACE RAIL TYPES**

USE	TYPE
BRACE RAIL	SP1 OR FS1

\*\* INCLUDES END, CORNER, ANGLE, INTERSECTION AND INTERMEDIATE BRACED POSTS

**FENCE CHAIN LINK**

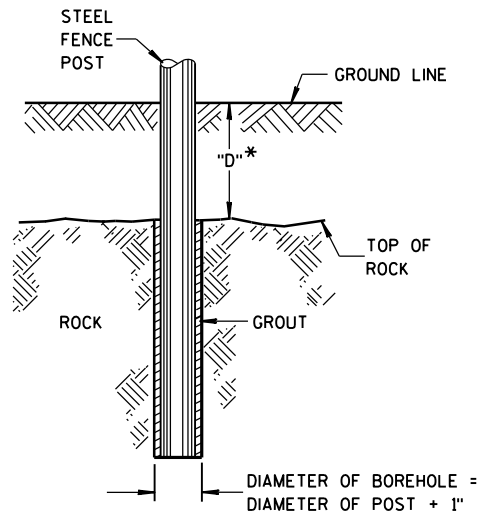
STATE OF WISCONSIN  
DEPARTMENT OF TRANSPORTATION

6

6

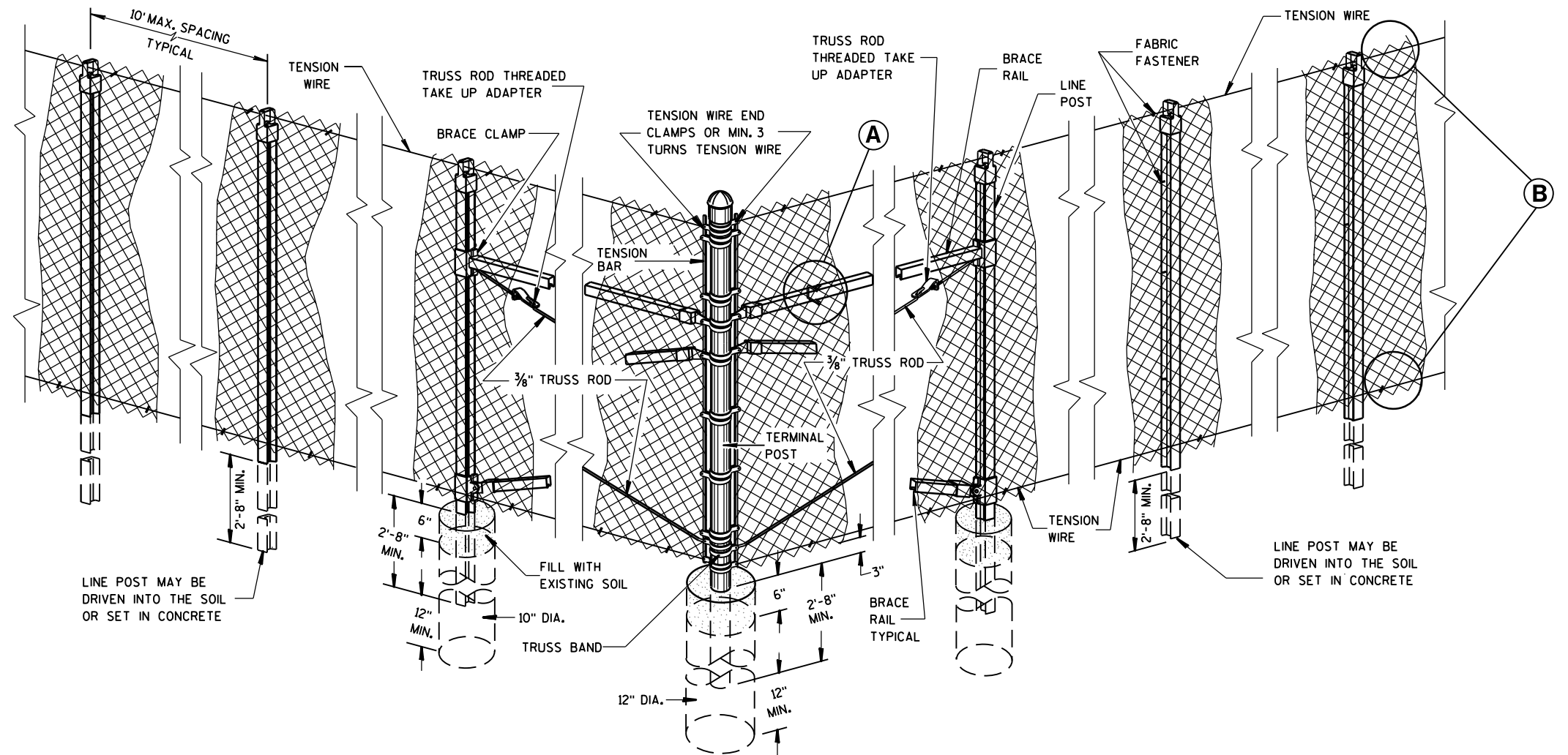
S.D.D. 15 B 3-15a

S.D.D. 15 B 3-15a



\* IF "D" IS LESS THAN 2'-6",  
DRILL ROCK AND INSTALL GROUT

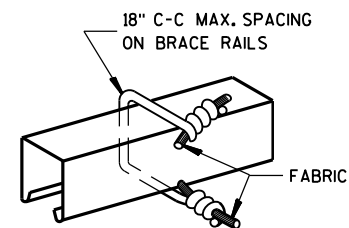
**ROCK INSTALLATION  
OF LINE POST**



LINE POST MAY BE  
DRIVEN INTO THE SOIL  
OR SET IN CONCRETE

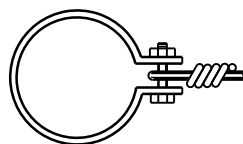
LINE POST MAY BE  
DRIVEN INTO THE SOIL  
OR SET IN CONCRETE

**END, CORNER, ANGLE  
INTERSECTION & INTERMEDIATE  
BRACED POSTS**

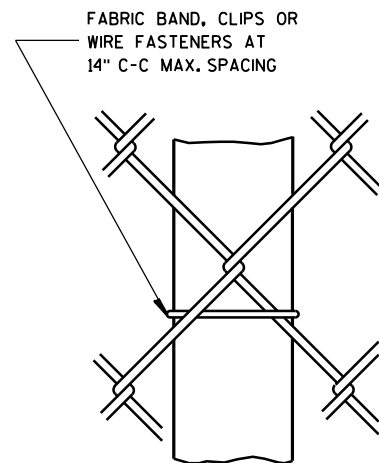


**BRACE RAIL  
FABRIC FASTENER**

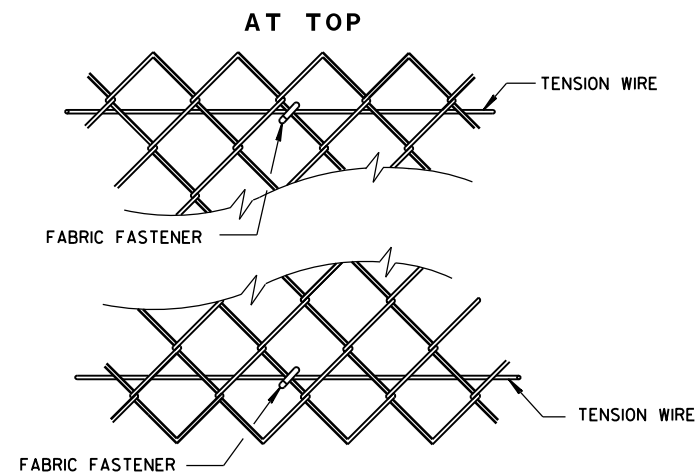
(A)



**TENSION WIRE END CLAMP**



**LINE POST  
FABRIC FASTENER**



(B)

6

6

<b>FENCE CHAIN LINK</b>	
STATE OF WISCONSIN DEPARTMENT OF TRANSPORTATION	
APPROVED FEB. 2015 DATE	/s/ Jerry H. Zogg ROADWAY STANDARDS DEVELOPMENT ENGINEER
FHWA	

*Chain Link Fence***References:**[FDM 11-45-40](#)[FDM 19-40 Exhibit 1.1](#)**Bid items associated with this drawing:**

<u>ITEM NUMBER</u>	<u>DESCRIPTION</u>	<u>UNIT</u>
616.0200 - 0299	Fence Chain Link (height).....	LF
616.0329	Gates Chain Link (width).....	EACH
616.0400 - 0499	Fence Chain Link Salvaged (height).....	LF

**Standardized Special Provisions associated with this drawing:**

<u>STSP NUMBER</u>	<u>TITLE</u>
NONE	

**Other SDDs associated with this drawing:**[SDD 15B3](#) Chain Link Fence sheet "b" is required.**Design Notes:**

Specify a pedestrian gate for maintenance access at or near bridges when warranted. Coordinate with region chief maintenance engineer.

There should be no occasion where designers would want to specify barbs given that they pose a significant safety hazard both on the top and bottom edges. Where security is a major concern, designers should specify security fencing that may include barbed chain link fabric but would use a special detail and different bid item.

Check with structural engineer or retaining wall manufacturer on how to install a fence in close proximity to retaining wall. Fence and retaining walls in close proximity may also cause construction issues (e.g. post or post footing can interfere with wall's reinforcement) and may cause maintenance issues in some locations (e.g. How to mow a short strip of grass between fence and wall?).

**Contact Person:**

Erik Emerson (608) 266-2842