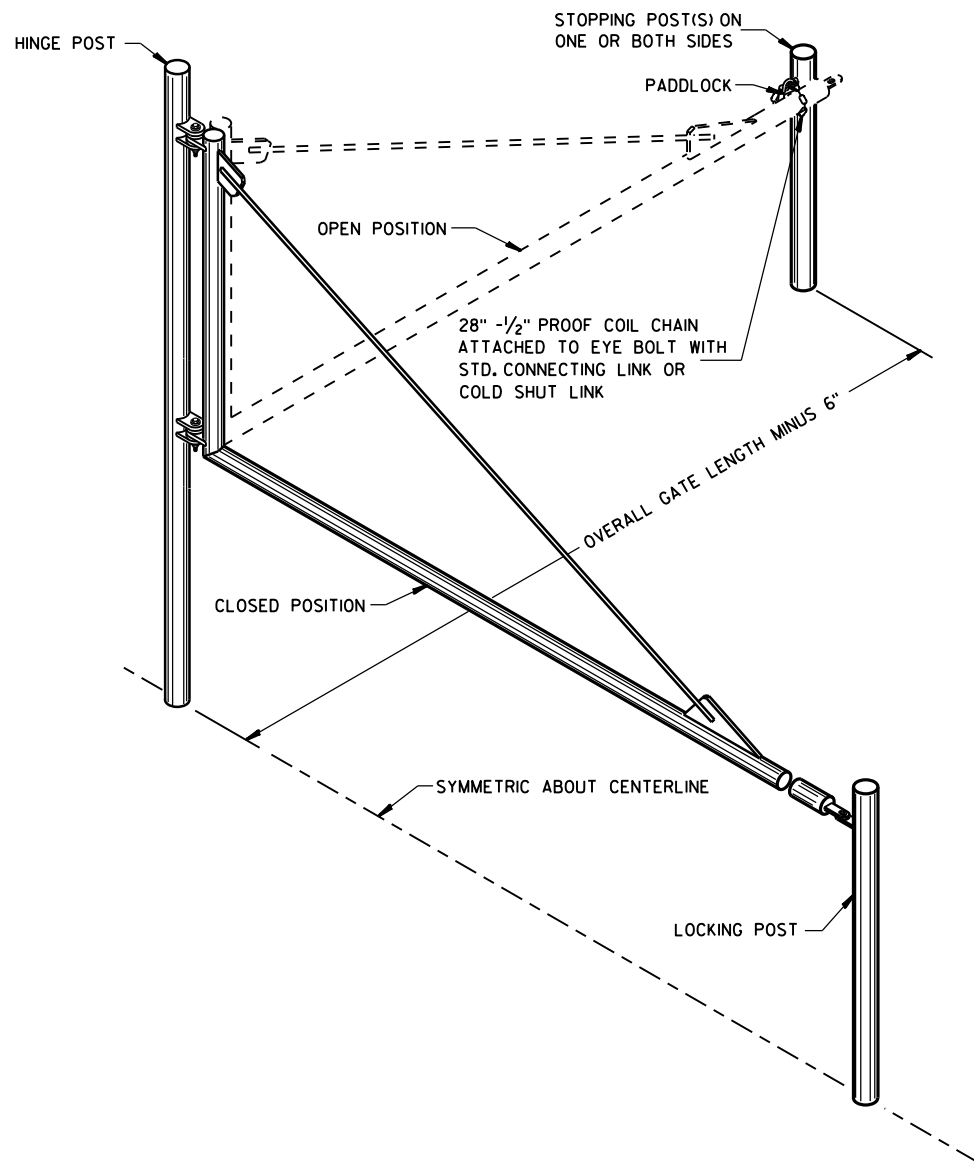
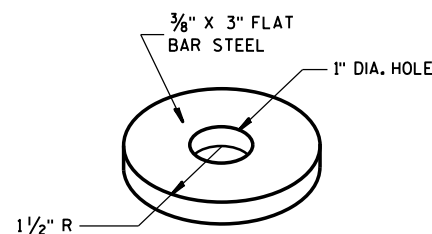


6

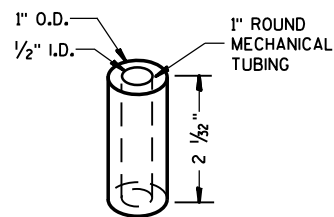
6



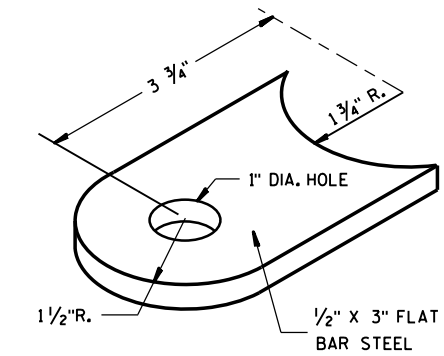
**ISOMETRIC VIEW
PIPE GATE PARTIAL LAYOUT (ONE SIDE ONLY)**



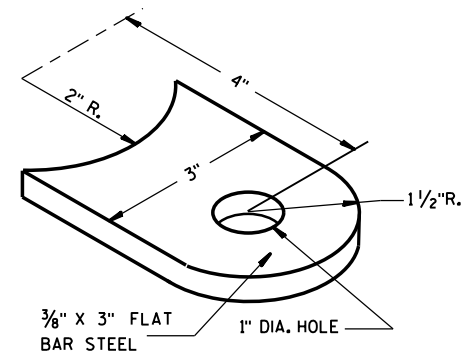
**ISOMETRIC VIEW
SPACING RING
4 REQUIRED**



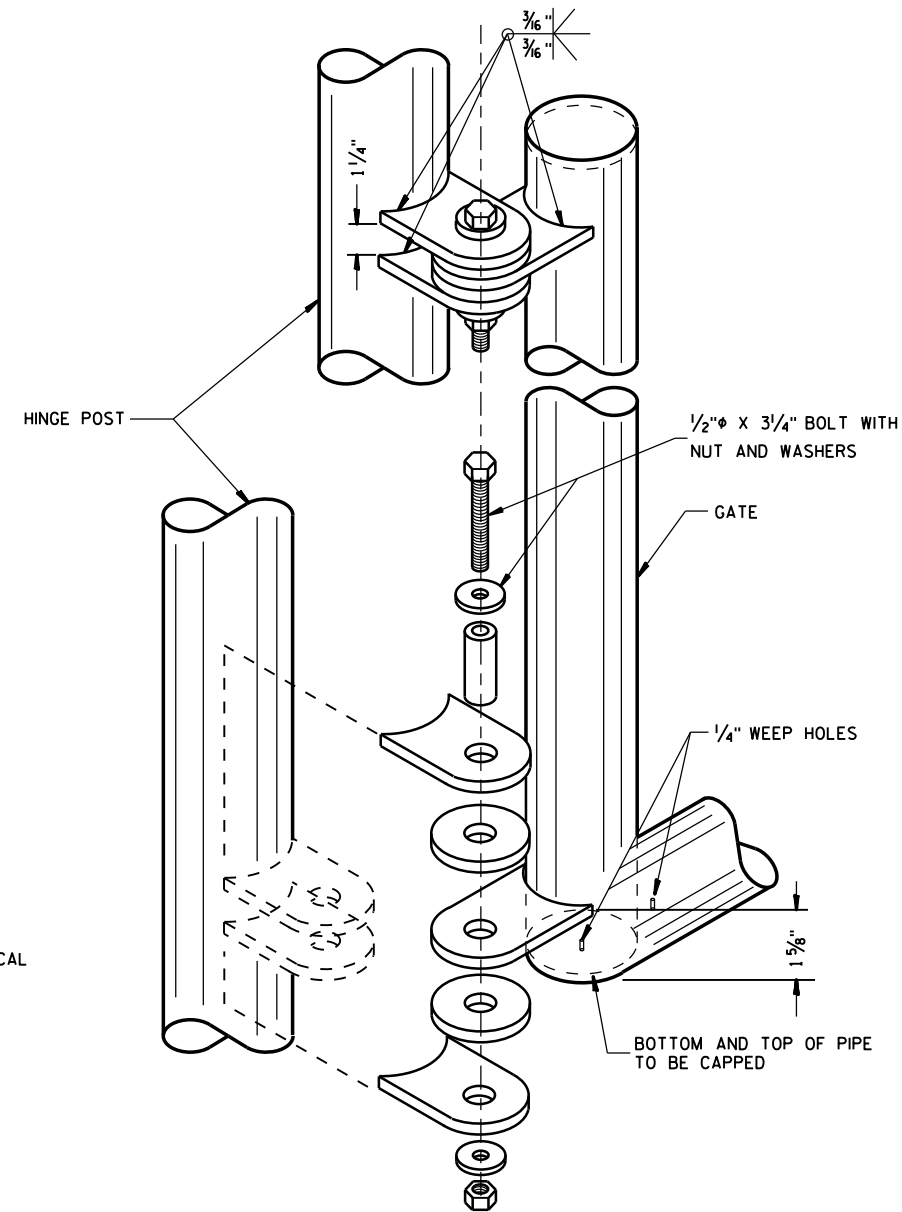
**ISOMETRIC VIEW
SLEEVE
2 REQUIRED**



**ISOMETRIC VIEW
SWING ARM BRACKET
2 REQUIRED**



**ISOMETRIC VIEW
POST BRACKET
4 REQUIRED**



**ISOMETRIC VIEW
HINGE ASSEMBLY**

GENERAL NOTES

- ALL PIPE POSTS SHALL HAVE OPEN BOTTOMS.
- ALL OTHER EXPOSED ENDS SHALL BE CAPPED AND SEALED TO PREVENT WATER FROM ENTERING.
- ALL STEEL BRACKETS SHALL BE ASTM A36.
- ALL UNITS SHALL BE SHOP FABRICATED.
- BOTH POSTS SHALL BE PLACED IN CONCRETE IN ACCORDANCE WITH THE DETAILED PLANS.
- ALL METAL SHALL BE CLEANED BY SANDBLASTING TO A SSPC-10, COMMERCIAL BLAST FINISH.
- ALL METAL SHALL BE PAINTED WITH A ZINC RICH PRIMER AND ONE COAT OF EPOXY FINISH PAINT. A SECOND FINISH COAT SHALL BE FIELD APPLIED AFTER INSTALLATION.
- GATE LOCK CAN BE MASTER KEYED AND SHALL HAVE THE FOLLOWING MINIMUM DIMENSIONS: SHACKLE DIA. OF 3/8", VERTICAL CLEARANCE OF 1 1/2", HORIZONTAL CLEARANCE OF 1 1/2".
- HINGE BOLT THREADS SHALL BE PEINED OR SPOT WELDED IN PLACE TO PREVENT REMOVAL.
- HOLE IN HINGE BRACKETS SHALL BE LARGE ENOUGH SO THAT 1" OD PIPE COLLAR JUST SLIDES THROUGH OPENING.
- ALL BOLTS, WASHERS AND NUTS SHALL BE UNL ASTM A325.

**(TABLE OF DIMENSIONS)
SINGLE GATE**

CLEAR WIDTH	END OVERHANG	DISTANCE BETWEEN POSTS	OVERALL GATE LENGTH
10'-0"	3'-5 1/4"	10'-7 1/4"	9'-9 3/4"
12'-0"	5'-5 1/4"	12'-7 1/4"	11'-9 3/4"

IF CLEAR WIDTH GREATER THAN 12'-0" THAN USE DUAL OPENING GATES.

DUAL OPENING GATES

CLEAR WIDTH	END OVERHANG	DISTANCE BETWEEN POSTS	OVERALL GATE LENGTH
14'-0"	3 1/4"	14'-7"	7'-3/4"
16'-0"	1'- 3 1/4"	16'-7"	8'-3/4"
18'-0"	2'- 3 1/4"	18'-7"	9'-3/4"

DESIGN NOTE:

GATE SIZE SHALL BE SPECIFIED AS THE CLEAR WIDTH OF OPENING.

PIPE GATE DETAILS

STATE OF WISCONSIN
DEPARTMENT OF TRANSPORTATION

APPROVED
DATE 1/5/94 /S/ Rory L. Rhinesmith
DATE CHIEF METHODS DEVELOPMENT ENGINEER
FHWA

Pipe Gate Details

References:

NONE

Bid items associated with this drawing:

<u>ITEM NUMBER</u>	<u>DESCRIPTION</u>	<u>UNIT</u>
NONE		

Standardized Special Provisions associated with this drawing:

<u>STSP NUMBER</u>	<u>TITLE</u>
NONE	

Other SDDs associated with this drawing:

NONE

Design Notes:

NONE

Contact Person:

Andrew Heidtke (414) 220-6802