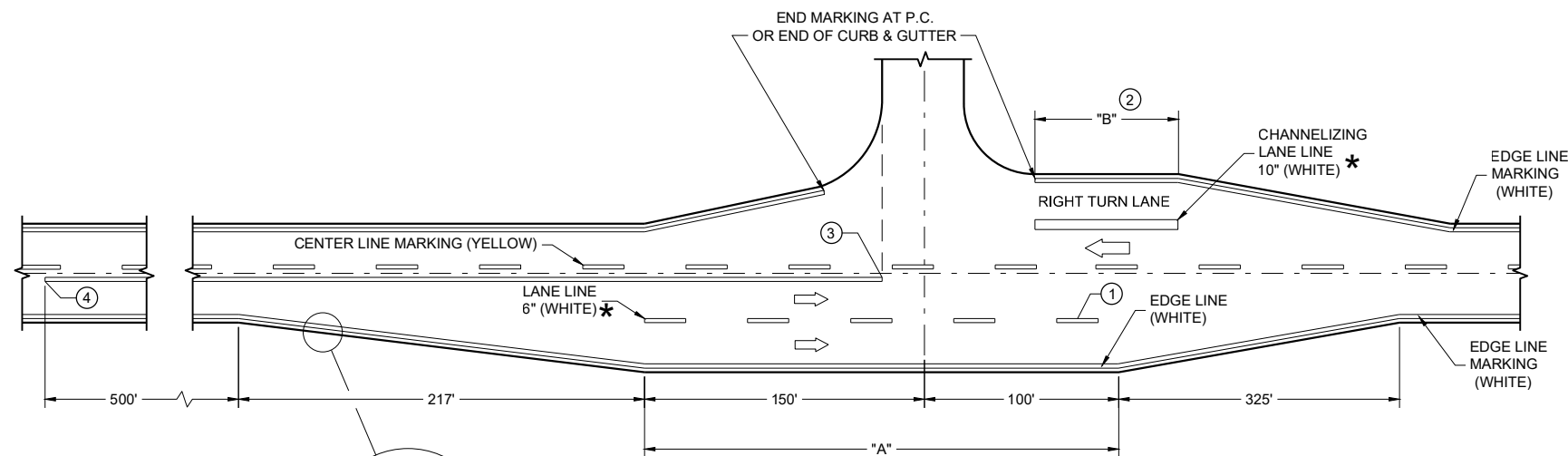


MINOR INTERSECTION



MAJOR INTERSECTIONS
(INTERSECTION WITH FULL RIGHT TURN LANE OR BYPASS LANE)

*CONFIRM MARKING LINE WIDTH WITH THE MISCELLANEOUS QUANTITIES

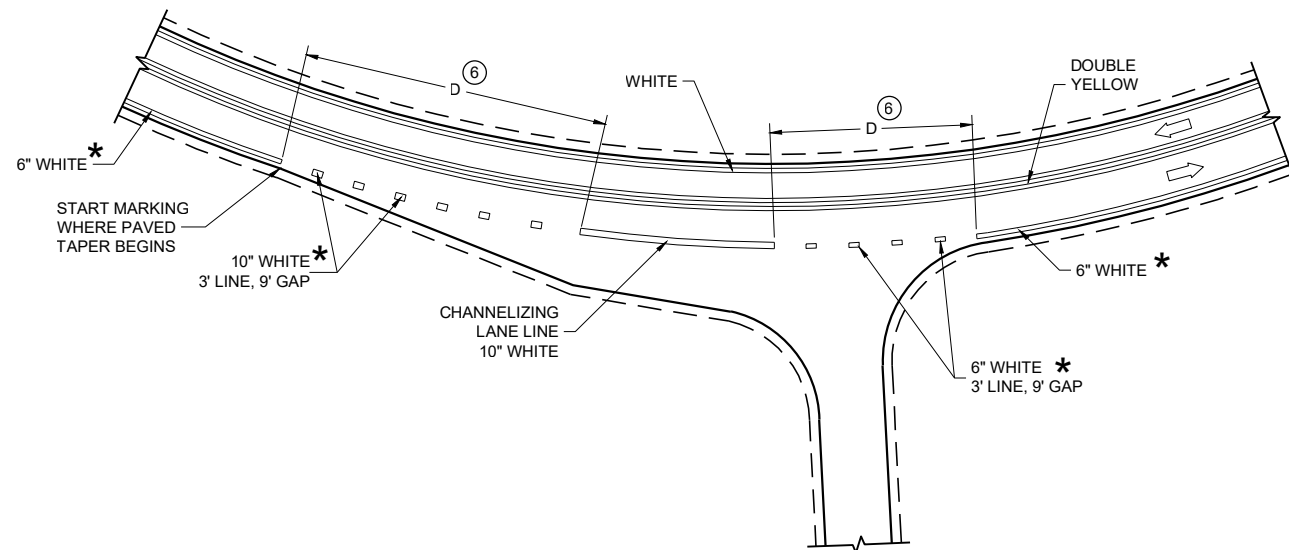
GENERAL NOTES

OMIT EDGE LINES THROUGH INTERSECTIONS. CONTINUE EDGE LINES THROUGH DRIVEWAYS.

- ① WHEN DISTANCE "A" IS LESS THAN 250 FEET, OMIT LANE LINE.
- ② WHEN DISTANCE "B" IS LESS THAN 100 FEET, OMIT CHANNELIZING LANE LINE.
- ③ BARRIER LINE ENDS AT SIDE ROAD PAVEMENT / SURFACE EDGE EXTENSION.
- ④ BARRIER LINE STARTS 500 FEET PRIOR TO THE BYPASS TAPER.
- ⑤ WHEN DISTANCE "C" IS LESS THAN 4 FEET, OMIT DOTTED EXTENSION.
- ⑥ WHEN DISTANCE "D" IS LESS THAN 50 FEET, OMIT DOTTED EXTENSION.

LEGEND

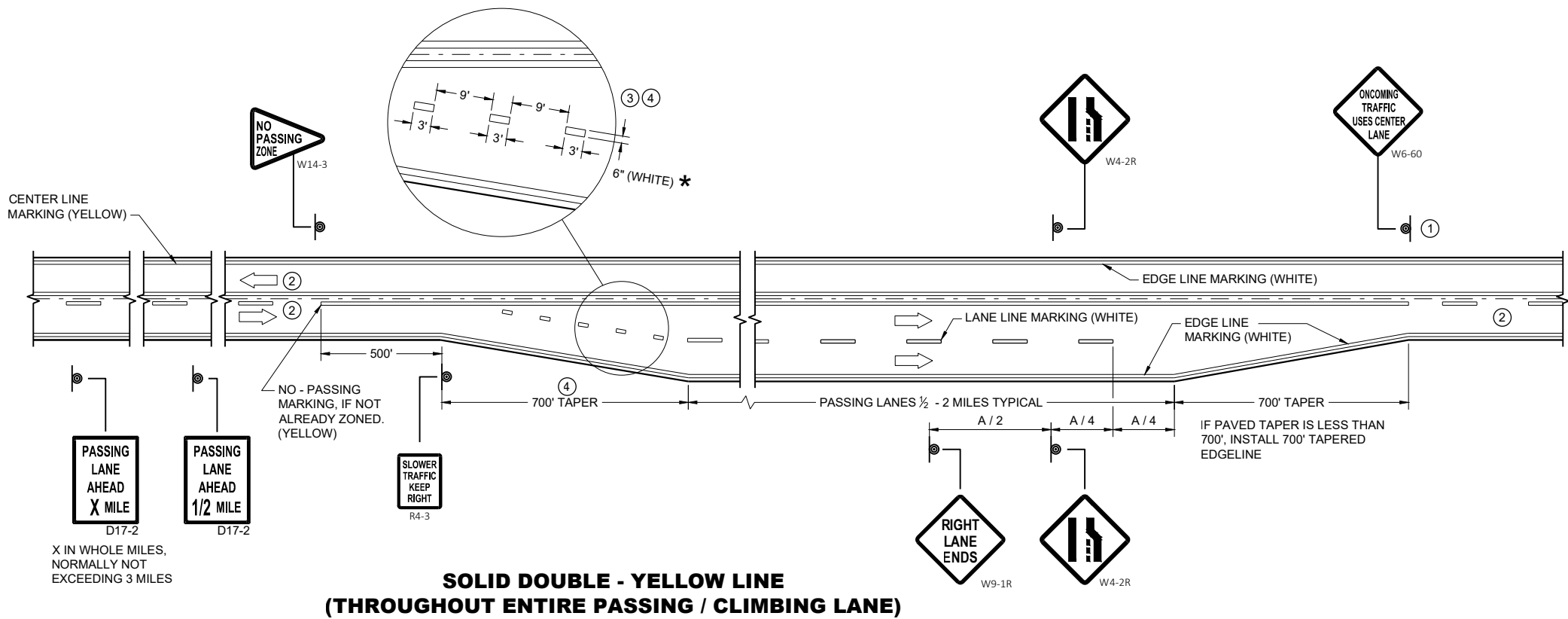
➡ DIRECTION OF TRAVEL



INTERSECTION ON OUTSIDE OF CURVE

PAVEMENT MARKING
(INTERSECTIONS)

STATE OF WISCONSIN
DEPARTMENT OF TRANSPORTATION



GENERAL NOTES

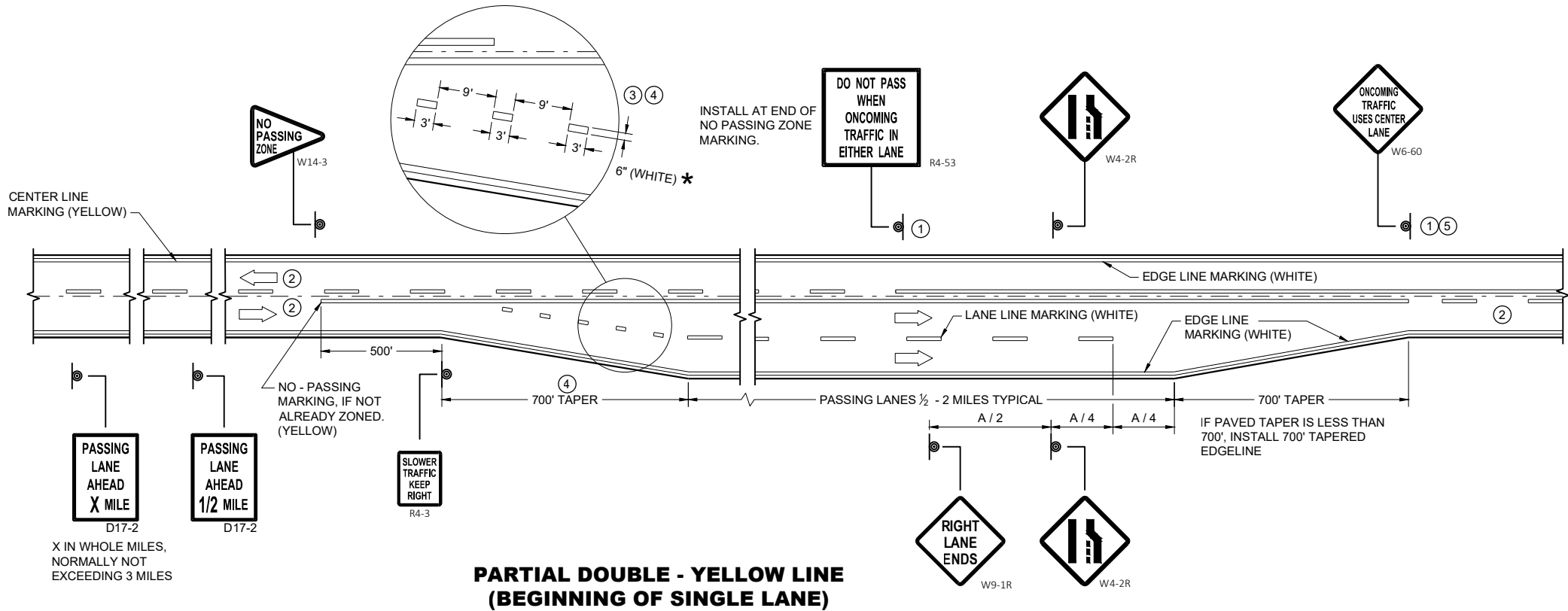
- 1 SIGN SHALL BE REPEATED AT 1 MILE INCREMENTS OR AT THE DISCRETION OF THE REGIONAL TRAFFIC ENGINEER.
- 2 THERE MAY BE SOLID YELLOW ON THE CENTERLINE DUE TO SIGHT CONDITIONS.
- 3 THE TAPER LENGTH OF THE DOTTED LINE PAVEMENT MARKING SHALL BE 700 FEET, 3' LINE, 9' GAP, EXCEPT RETRACE THE EXISTING LINE - GAP PATTERN WHERE EXISTING MARKINGS ARE IN PLACE.
- 4 WHEN THE ENTRANCE TAPER IS LESS THAN 700 FEET OR THE SHOULDER WIDTH IN THE PASSING / CLIMBING LANE IS LESS THAN THE ADJACENT HIGHWAY, DO NOT INSTALL DOTTED LINE PAVEMENT MARKING.
- 5 REPEAT EVERY 1 MILE UP UNTIL R4-53.

ARROW SYMBOL (→) SHOWS DIRECTION OF TRAVEL

DISTANCE TABLE

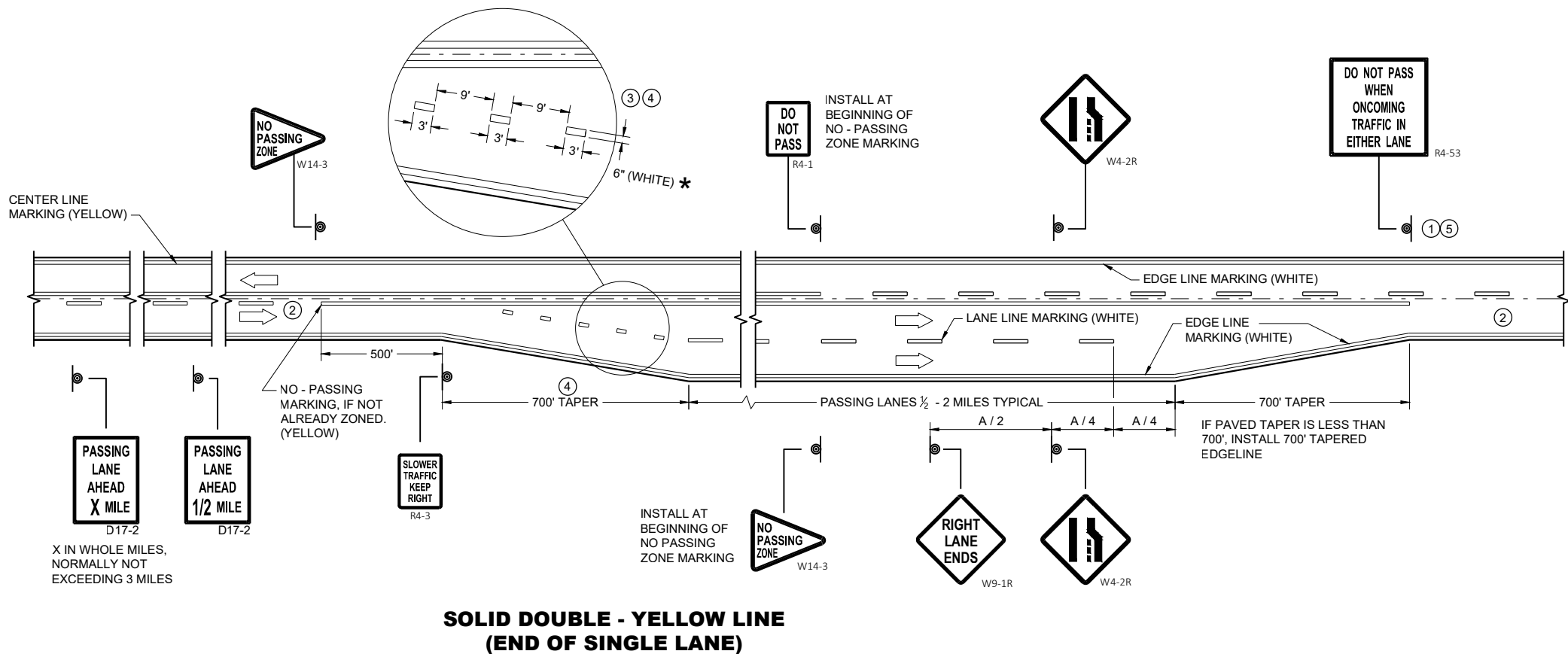
POSTED OR 85th PERCENTILE SPEED	DISTANCE "A"
45	775
50	885
55	990

*CONFIRM MARKING LINE WIDTH WITH THE MISCELLANEOUS QUANTITIES



PAVEMENT MARKING & SIGNING
(CLIMBING LANE & PASSING LANE)

STATE OF WISCONSIN
DEPARTMENT OF TRANSPORTATION



GENERAL NOTES

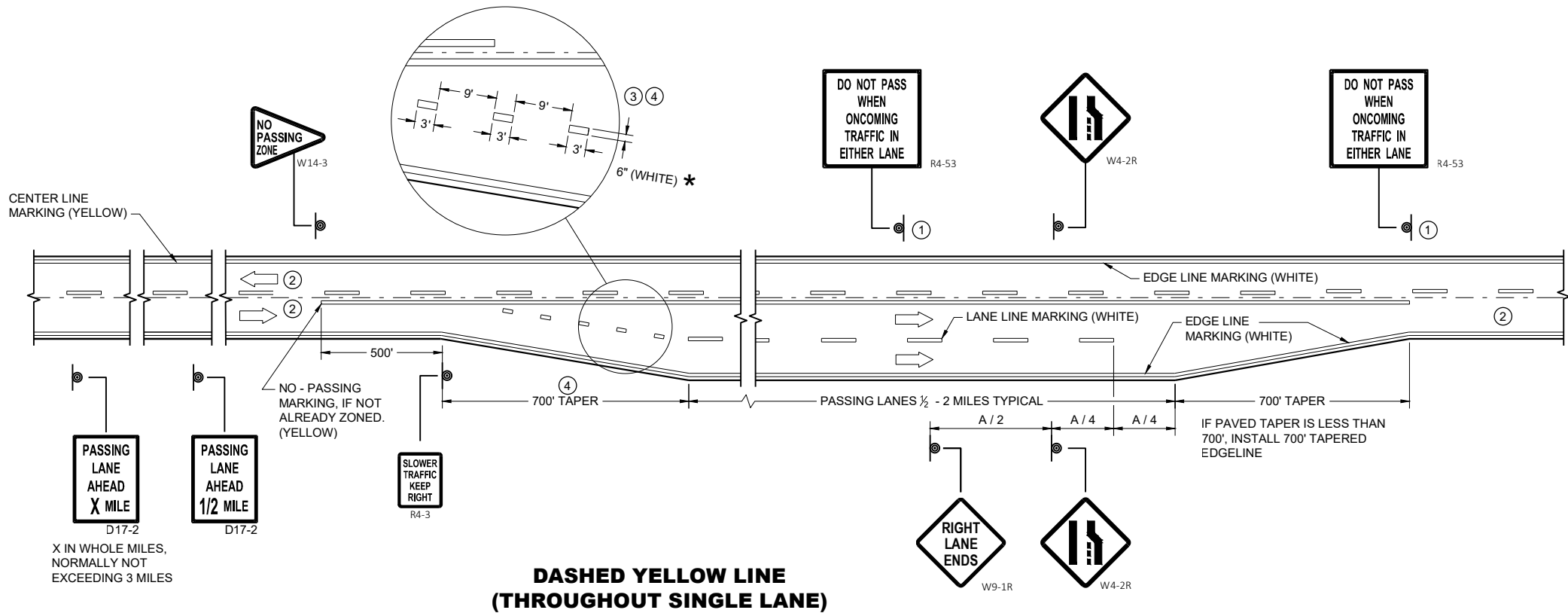
- 1 SIGN SHALL BE REPEATED AT 1 MILE INCREMENTS OR AT THE DISCRETION OF THE REGIONAL TRAFFIC ENGINEER.
- 2 THERE MAY BE SOLID YELLOW ON THE CENTERLINE DUE TO SIGHT CONDITIONS.
- 3 THE TAPER LENGTH OF THE DOTTED LINE PAVEMENT MARKING SHALL BE 700 FEET, 3' LINE, 9' GAP, EXCEPT RETRACE THE EXISTING LINE - GAP PATTERN WHERE EXISTING MARKINGS ARE IN PLACE.
- 4 WHEN THE ENTRANCE TAPER IS LESS THAN 700 FEET OR THE SHOULDER WIDTH IN THE PASSING / CLIMBING LANE IS LESS THAN THE ADJACENT HIGHWAY, DO NOT INSTALL DOTTED LINE PAVEMENT MARKING.
- 5 REPEAT EVERY ONE MILE UP UNTIL NO PASSING ZONE.

ARROW SYMBOL (→) SHOWS DIRECTION OF TRAVEL

DISTANCE TABLE

POSTED OR 85th PERCENTILE SPEED	DISTANCE "A"
45	775
50	885
55	990

*CONFIRM MARKING LINE WIDTH WITH THE MISCELLANEOUS QUANTITIES



**PAVEMENT MARKING & SIGNING
(CLIMBING LANE & PASSING LANE)**

STATE OF WISCONSIN
DEPARTMENT OF TRANSPORTATION

APPROVED
May 2023
DATE
/S/ Jeannie Silver
ROADWAY STANDARDS DEVELOPMENT
UNIT SUPERVISOR

*Pavement Marking (Intersections)***References:**

Traffic Engineering, Operations and Safety Manual, Chapter 3 ([TEOpS Chapter 3](#))
Manual on Uniform Traffic Control Devices Part 3B

Bid items associated with this drawing:

<u>ITEM NUMBER</u>	<u>DESCRIPTION</u>	<u>UNIT</u>
<i>Bid items associated with this drawing in addition to those shown on sheet a:</i>		
646.1000-4999	Marking Line (material) (width)	LF

Standardized Special Provisions associated with this drawing:

<u>STSP NUMBER</u>	<u>TITLE</u>
NONE	

Other SDDs associated with this drawing:

[SDD 15C8](#) Longitudinal Marking sheet "a" (mainline) is required.

Design Notes:

NONE

Contact Person:

Jeannie Silver (608) 246-5408
Ryan Mayer (608) 246-3810

*Pavement Marking (Climbing and Passing Lanes)***References:**

Traffic Engineering, Operations and Safety Manual, Chapter 3 ([TEOpS Chapter 3](#))
Manual on Uniform Traffic Control Devices Part 3B.

Bid items associated with this drawing:

<u>ITEM NUMBER</u>	<u>DESCRIPTION</u>	<u>UNIT</u>
<i>Bid items associated with this drawing in addition to those shown on sheet a of this SDD if permanent signing is to be included in the contract:</i>		
634.0400 - 0699	Posts Wood (size)(length).....	EACH
637.2210	Signs Type II Reflective H.....	SF
637.2230	Signs Type II Reflective F.....	SF

Standardized Special Provisions associated with this drawing:

<u>STSP NUMBER</u>	<u>TITLE</u>
NONE	

Other SDDs associated with this drawing:

[SDD 15C8](#) Longitudinal Marking sheet "a" (mainline) is required.

Design Notes:

If permanent signing is to be included in the contract, the plan letter should request insertion of the following sign plates: A4-3, A4-4, A4-8, A4-11, D17-2, R4-3, R4-51, R4-53, W4-2, W9-1 and W14-3.

Contact Person:

Jeannie Silver (608) 246-5408
Ryan Mayer (608) 246-3810

*Pavement Marking (Climbing and Passing Lanes)***References:**

Traffic Engineering, Operations and Safety Manual, Chapter 3 ([TEOpS Chapter 3](#))
Manual on Uniform Traffic Control Devices Part 3B.

Bid items associated with this drawing:

<u>ITEM NUMBER</u>	<u>DESCRIPTION</u>	<u>UNIT</u>
<i>Bid items associated with this drawing in addition to those shown on sheet a of this SDD if permanent signing is to be included in the contract:</i>		
634.0400 - 0699	Posts Wood (size)(length).....	EACH
637.2210	Signs Type II Reflective H.....	SF
637.2230	Signs Type II Reflective F.....	SF

Standardized Special Provisions associated with this drawing:

<u>STSP NUMBER</u>	<u>TITLE</u>
NONE	

Other SDDs associated with this drawing:

[SDD 15C8](#) Longitudinal Marking sheet "a" (mainline) is required.

Design Notes:

If permanent signing is to be included in the contract, the plan letter should request insertion of the following sign plates: A4-3, A4-4, A4-8, A4-11, D17-2, R4-1, R4-3, R4-51, R4-53, W4-2, W9-1 and W14-3.

Contact Person:

Jeannie Silver (608) 246-5408
Ryan Mayer (608) 246-3810