



# SDD 15D37 Traffic Control, Flagging Operation, Roundabout

## LEGEND

- SIGN ON PERMANENT SUPPORT
- TRAFFIC CONTROL DRUM
- TYPE III BARRICADE WITH ATTACHED SIGN
- DIRECTION OF TRAFFIC
- WORK AREA
- FLAGGER, EQUIPPED WITH STOP/SLOW PADDLE FASTENED ON SUPPORT STAFF

## GENERAL NOTES

ALL SIGNS ARE 48"X48" BLACK ON ORANGE UNLESS OTHERWISE NOTED. IF NECESSARY DUE TO SPACE CONSTRAINTS, 36" X 36" SIGNS MAY BE USED IF APPROVED BY THE REGIONAL TRAFFIC UNIT.

"WO" SIGN IS THE SAME AS "W" SIGN EXCEPT THE BACKGROUND IS ORANGE

ANY SIGNS TEMPORARY OR EXISTING, WHICH CONFLICT WITH THE TRAFFIC CONTROL "IN USE" SHALL BE REMOVED OR COVERED AS NEEDED AND AS APPROVED BY THE ENGINEER.

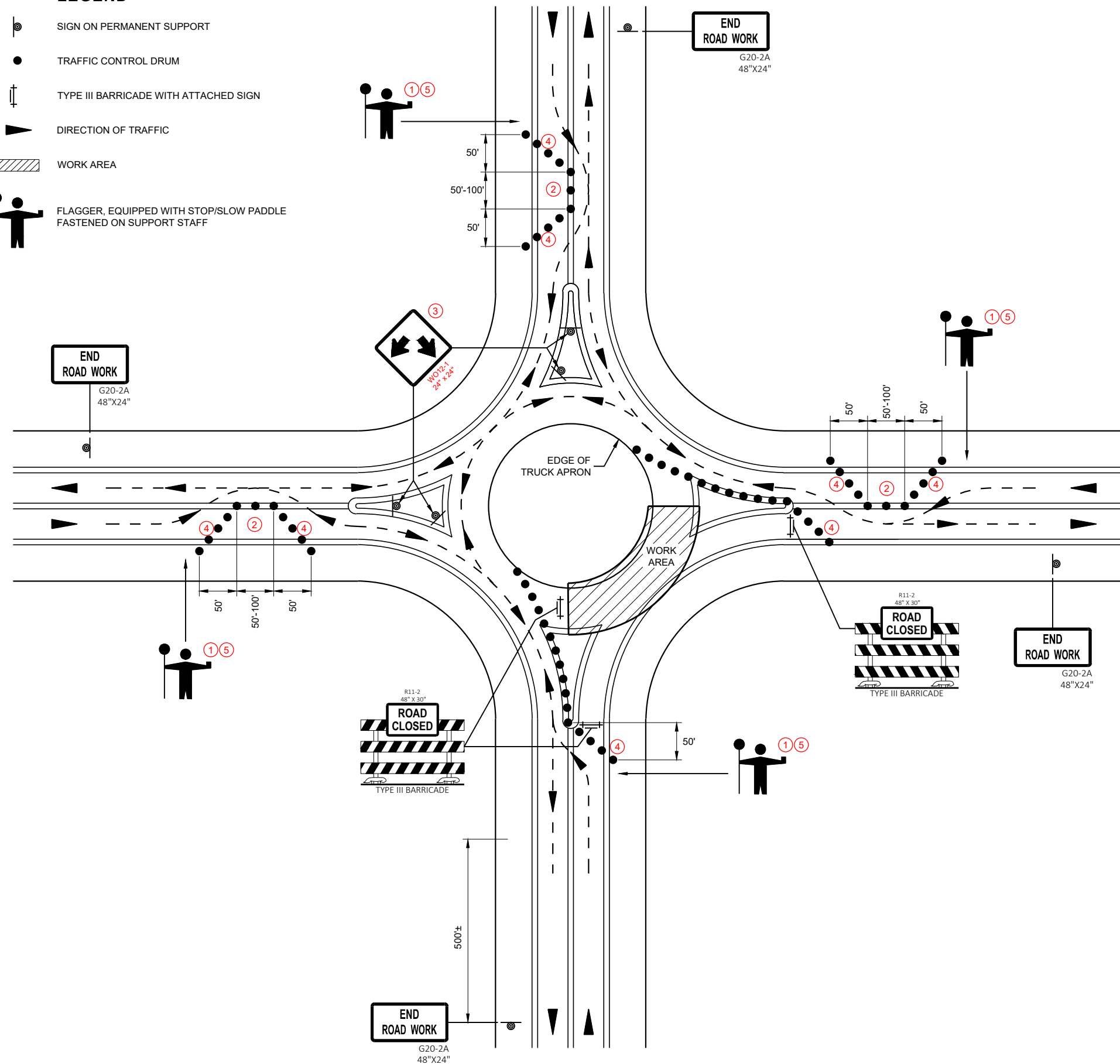
THE EXACT NUMBER, LOCATION, AND SPACING OF ALL SIGNS AND DEVICES SHALL BE ADJUSTED TO FIT FIELD CONDITIONS AS APPROVED BY THE ENGINEER.

ONLY ONE QUADRANT OF TRAFFIC SHALL BE RELEASED AT A TIME.

FLAGGERS SHALL CONTROL TRAFFIC ON ALL APPROACHES OF THE ONE-LANE ROUNDABOUT. ONE FLAGGER SHALL BE DESIGNATED LEAD FLAGGER.

NIGHT TIME WORK REQUIRES ADDITIONAL LIGHTING AT FLAGGER STATION(S).

- ① FLAGGERS SHALL BE IN DIRECT RADIO CONTACT AT ALL TIMES. THEY SHALL BE EQUIPPED WITH STOP/SLOW PADDLES FASTENED ON SUPPORT STAFFS. WHEN THE FLAGGING IS NOT IN EFFECT, COVER OR REMOVE ALL TEMPORARY TRAFFIC CONTROL SIGNS.
- ② ADJUST CHANNELIZING DEVICES TO ACCOMMODATE FOR TURNING RADIUS OF LARGE VEHICLES AS DIRECTED BY THE ENGINEER.
- ③ GUIDE SIGN WITH ROAD NAMES MAY BE USED IN LIEU OF THE DOUBLE ARROW (WO12-1) SIGN.
- ④ THE TWO-WAY TAPER SHOULD BE 50 FEET USING 5 EQUALLY SPACED DRUMS.
- ⑤ FOLLOW SDD 15C12 FOR FLAGGING AND ADVANCE WARNING.



### RECOMMENDED REDUCED DRUM SPACING WITHIN ROUNDABOUT

MPH	DRUM SPACING (FT)
0-40	25
45-55	50

6

6

SDD 15D37 - 03

SDD 15D37 - 03

## TRAFFIC CONTROL, FLAGGING OPERATION, ROUNDABOUT

STATE OF WISCONSIN  
DEPARTMENT OF TRANSPORTATION

APPROVED  
 May 2020 /S/ Andrew Heidtke  
 DATE STATEWIDE WORK ZONE TRAFFIC SAFETY ENGINEER

FHWA

Traffic Control, 2-Lane Roundabout

References:

Part VI of the Wisconsin Manual on Uniform Traffic Control Devices (WMUTCD)
FDM 11-50-1, FDM 11-26

Bid items associated with this drawing:

Table with 3 columns: ITEM NUMBER, DESCRIPTION, UNIT. Rows include items like Traffic Control Drums, Barricades Type III, Warning Lights Type A/C, Signs, and Covering Signs Type I/II.

Standardized Special Provisions associated with this drawing:

Table with 2 columns: STSP NUMBER, TITLE. Row: NONE

Other SDDs associated with this drawing:

- SDD 15C11 Channelizing Devices – Drums, Cones, Barricades and Vertical Panel
SDD 15D30 Traffic Control, Sidewalk Closure (if sidewalk will be closed)

Design Notes:

Each roundabout is unique, and the traffic control must be developed to meet the specific conditions of the location, traffic volumes, duration, and the work operation. A detour could possibly better serve traffic movement and must be considered as an alternative to the flagger operation. This drawing may be used when closing a lane on a two-lane roadway with a single lane flagging operation on a roundabout. Refer to FDM 11-26-45, Work Zone Traffic Control, for more details.

Additional warning signs may be desirable further in advance of the lane closure,

Contact Person:

Andrew Heidtke (414) 220-6802