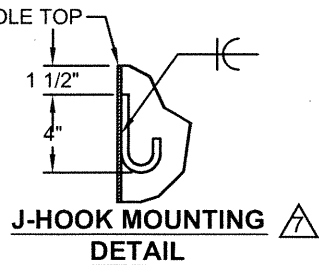
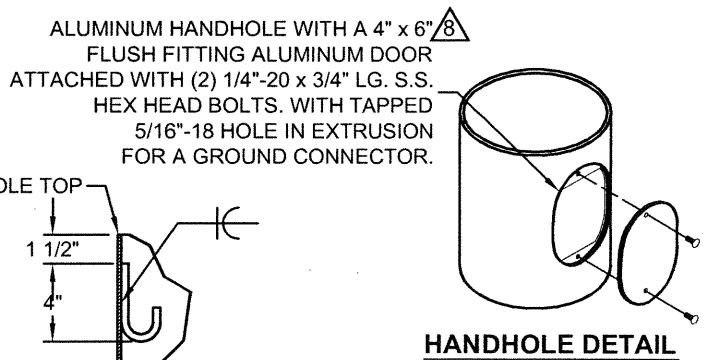
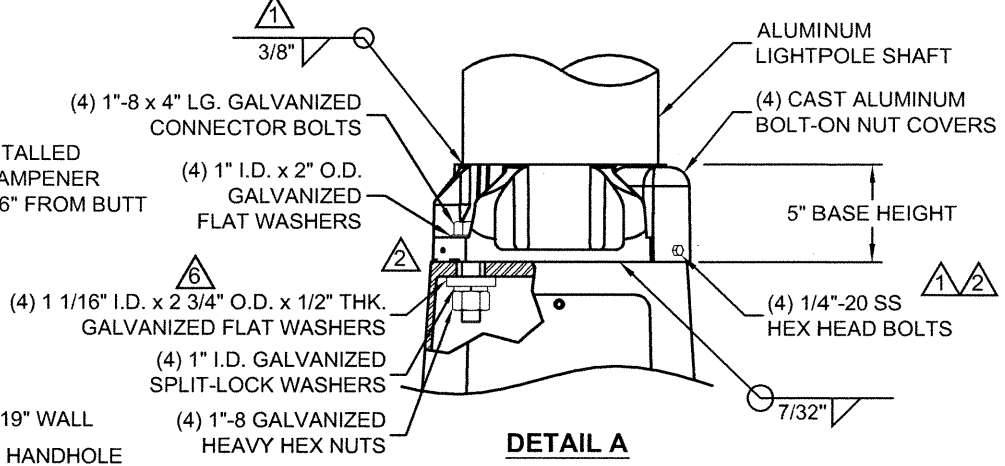
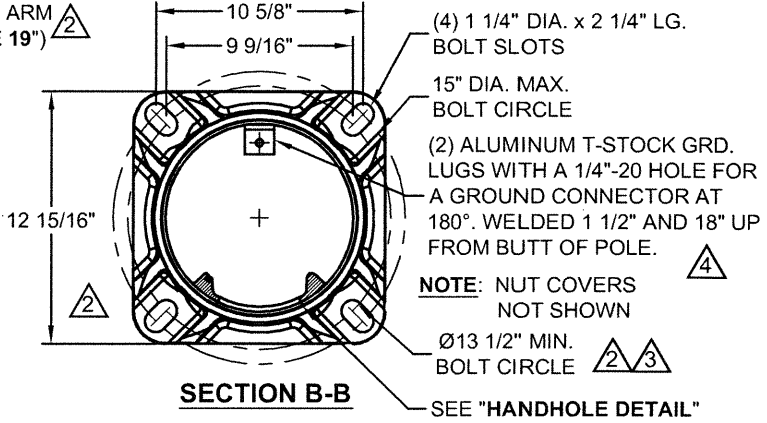


POLE RATING (PER AASHTO 2013): $\triangle 8$
 3-SEC GUST WIND SPEED: 90 MPH MAX
 EPA (LUMINAIRE): 1.5 SQ. FT. MAX
 WEIGHT (LUMINAIRE): 50 LBS MAX
 DESIGN LIFE 50 YEARS 20 FT SQ SIGN
 MOUNTED 15' ABOVE BASE TO TOP OF SIGN

NOTE: ALL STAINLESS STEEL HARDWARE TO BE COATED WITH ANTI-SEIZE COMPOUND BY CONTRACTOR IF REQUIRED $\triangle 3$

LIGHTPOLE SHAFT FABRICATED FROM 6063-T4 ALUMINUM ALLOY TUBE. LIGHTPOLE ASSEMBLY IS HEAT TREATED TO T6 CONDITION AFTER WELDING.



DO NOT SCALE

valmont 

Valmont Industries, Inc. Structures Division
 20805 Eaton Ave Farmington, Minnesota 55024-7932
 Phone: (651) 463-8990 (800) 899-7577
 Fax: (651) 463-3349

TITLE: S TYPE 7 FR TRANSFORMER BASE LIGHTPOLES		QTY: -	
MODEL NO.: 351060107T4A		DWN BY: BMS	
MATERIAL: ALUMINUM ALLOY		CHK'D BY:	
FINISH: 100 GRIT SATIN POLISH		APPR BY: <i>CEW</i>	
PROJECT: WISDOT		DATE: 12/12/05	
SOLD TO:		DWG NO: DR1154	
SHIP TO:		PAGE:	
P.O. NO:		BY: 3/25	
REP:			
$\triangle 1$	01-22-15	REV'D NOTE; CH'D EPA TO 2013; REV'D ARM	KPS
$\triangle 2$	08-25-14	REVISED J-HOOK DETAIL	KPS
$\triangle 3$	01-31-14	CHG'D WASHER DIM.	CEN
REV	DATE	REVISION DESCRIPTION	BY

****CONFIDENTIAL****

The information contained in this drawing is privileged and confidential, and may be protected from disclosure. Please be aware that any use or dissemination of this drawing may be subject to legal restriction or sanction.