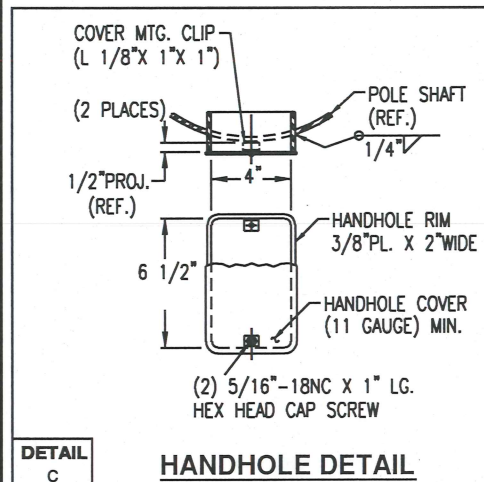
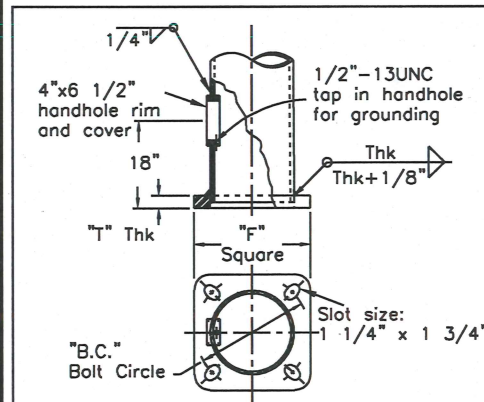


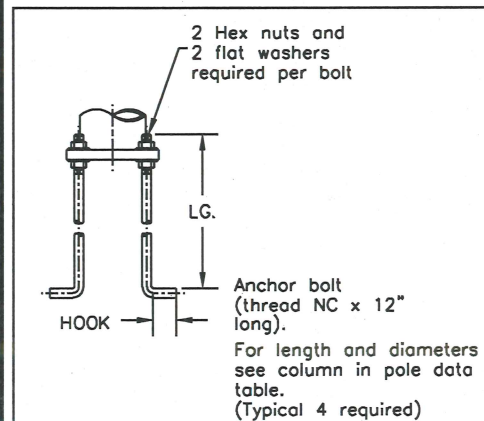
POLE DATA										BASE PLATE			ANCHOR BOLTS			
ITEM	QTY	CATALOG NUMBER	LENGTH	BASE O.D.	TOP O.D.	.1196"	.1793"	.2391"	.3125"	SQUARE "F"	B.C.	THK "T"	QTY	DIA	LG.	HOOK
		Type 5-WI15LTG01	30'-0"	8.000"	3.875"	30'-0"	-	-	-	12.000"	11.500"	1.000"	4	1.000"	42.000"	4.000"
		Type 6-WI15LTG01	35'-0"	8.688"	3.875"	35'-0"	-	-	-	12.000"	11.500"	1.000"	4	1.000"	42.000"	4.000"
		Type 17-WI15LTG01	40'-0"	11.438"	6.000"	-	40'-0"	-	-	15.000"	15.000"	1.000"	4	1.000"	60.000"	4.000"



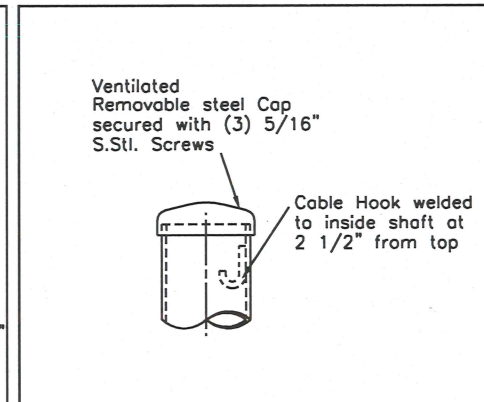
DETAIL C HANDHOLE DETAIL



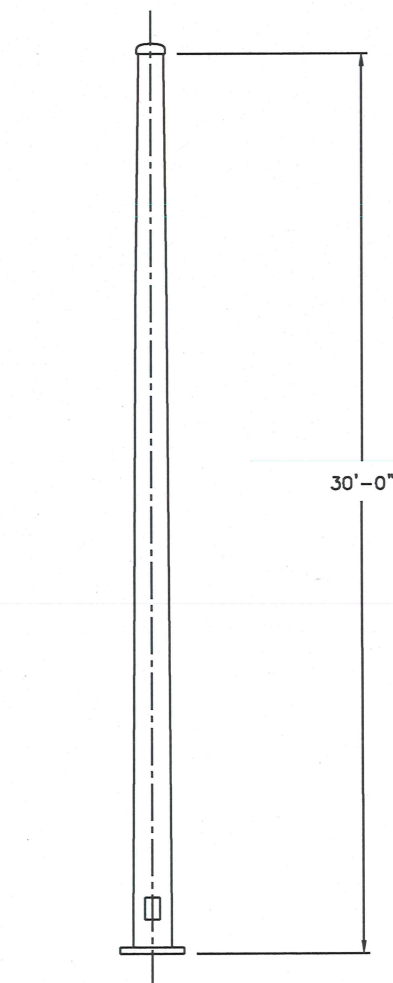
DETAIL B BASEPLATE DETAIL



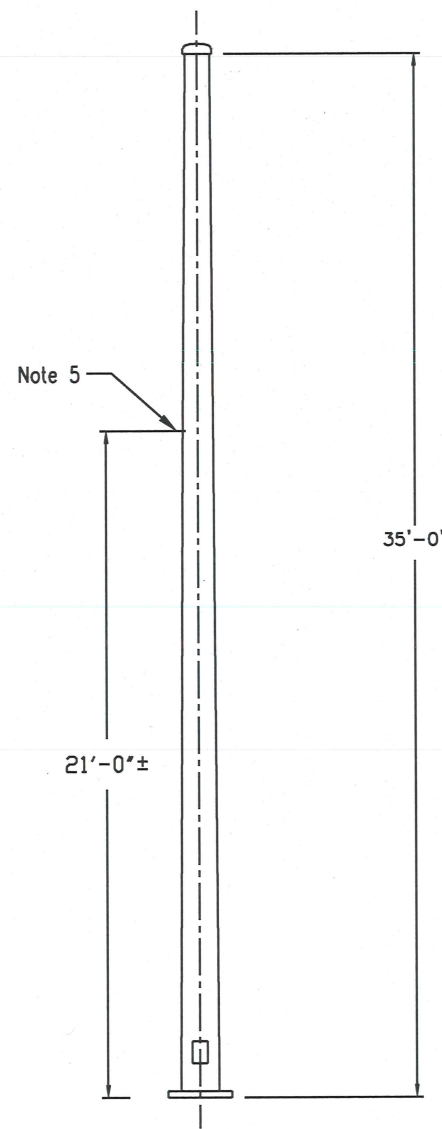
DETAIL A ANCHOR BOLT DETAIL



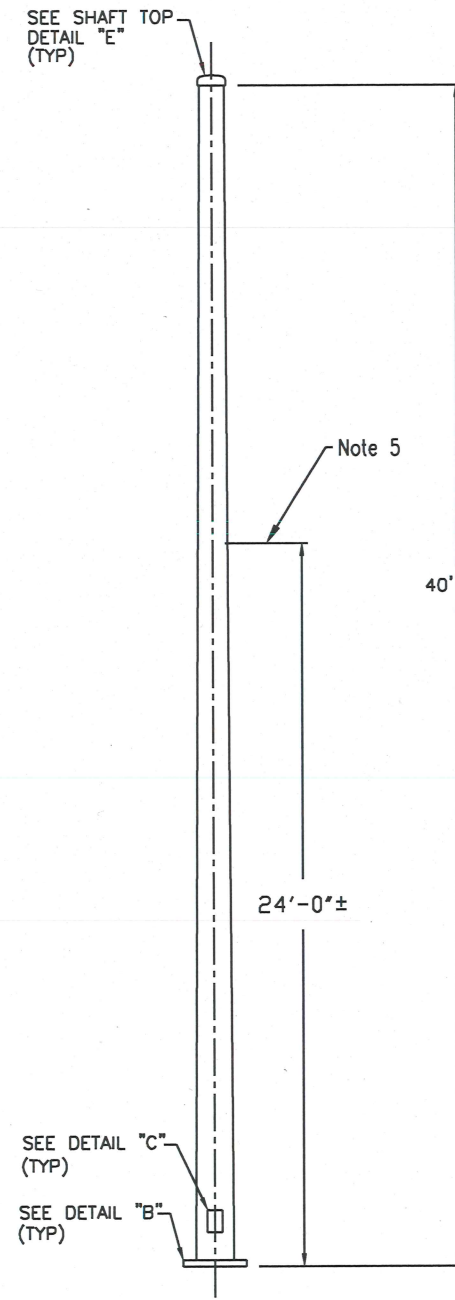
DETAIL E SHAFT TOP DETAIL



POLE TYPE-5
(1) 30'-0" SECTION



POLE TYPE-6
(1) 35'-0" SECTION



POLE TYPE-17
(1) 40'-0" SECTION

-- GENERAL NOTES --	
MATERIAL SPECIFICATIONS	
SHAFT (See Note 3)	Steel of 50,000 psi min. yield after fabrication.
BASE PLATES AND FLANGES	ASTM A-36 Steel ASTM A-36 Steel
PIPE	A-500 Gr. "B"
ANCHOR BOLTS	ASTM F-1554 GR 105 bolt min.
MANUFACTURING PROCESSES	
BUTT WELDS	Ground flush with base metal
LONGITUDINAL WELDS	All welds shall conform to AWS D1.1 weld specification
CIRCUMFERENTIAL	Butt weld with permanent back-up ring
FINISH COATING	
STRUCTURE	Hot dip galvanized per ASTM A-123
HARDWARE	Hot dip galvanized per ASTM A-153
DESIGN CRITERIA	
STRUCTURE AND HARDWARE	In accordance with the "Specifications for Structural Supports of Highway Signs, Luminaires and Traffic Signals", AASHTO 2013. 90 MPH, 3.0 second gust, no fatigue.
WELDING	In accordance with the latest edition of the AWS D1.1

- NOTES:
- Anchor bolts not supplied by AMERON. Dimensions and detail shown for information only.
 - Loading must not exceed a max of two 15 ft truss luminaires per WI DOT Sheet S.D.D. 9 E 1-14-d, e, f.
 - Pole Materials:
ASTM A-572-50
ASTM A-595-GR.A
ASTM A-709-GR.50, ASTM A-1008 GR.50
ASTM A-1011 GR.50, ASTM A-1018 GR.50
The listed materials are use based upon availability at time of purchase of material lots for producing pole and arm shafts
 - Ameron reserves the right to install tooling lugs or holes to facilitate in the galvanizing process. These lugs/holes will not impede with fit form or function of the finished product and are to be used solely by the manufacturer.
 - Type 6 and Type 17 Poles to be supplied with internal vibration dampers at approximate location shown.

REV	DATE	DESCRIPTION	BY	APPR
D	7/17	REVISED ANCHOR BOLT YIELD	JM	ST
C	7/17	PER CUSTOMER REVIEW	JM	ST
B	5/17	PER CUSTOMER REVIEW	JM	GM
A	10/16	REVISED TYPE 6 BASE OD	ST	JM

AMERON POLE PRODUCTS DIVISION				
STATE OF WISCONSIN				
TRAFFIC SIGNALS-POLE TYPES 5, 6, & 17				
<small>THIS DOCUMENT CONTAINS INFORMATION WHICH IS PROPRIETARY TO AMERON. IT SHALL NOT BE REPRODUCED, USED OR DISCLOSED TO ANYONE WITHOUT THE PRIOR WRITTEN PERMISSION OF AMERON.</small>				
DRAWN: ST	DATE: 9/15	SCALE	DWG. NO.	REV.
APPR: JM	DATE: 9/15		WI15LTG01	D