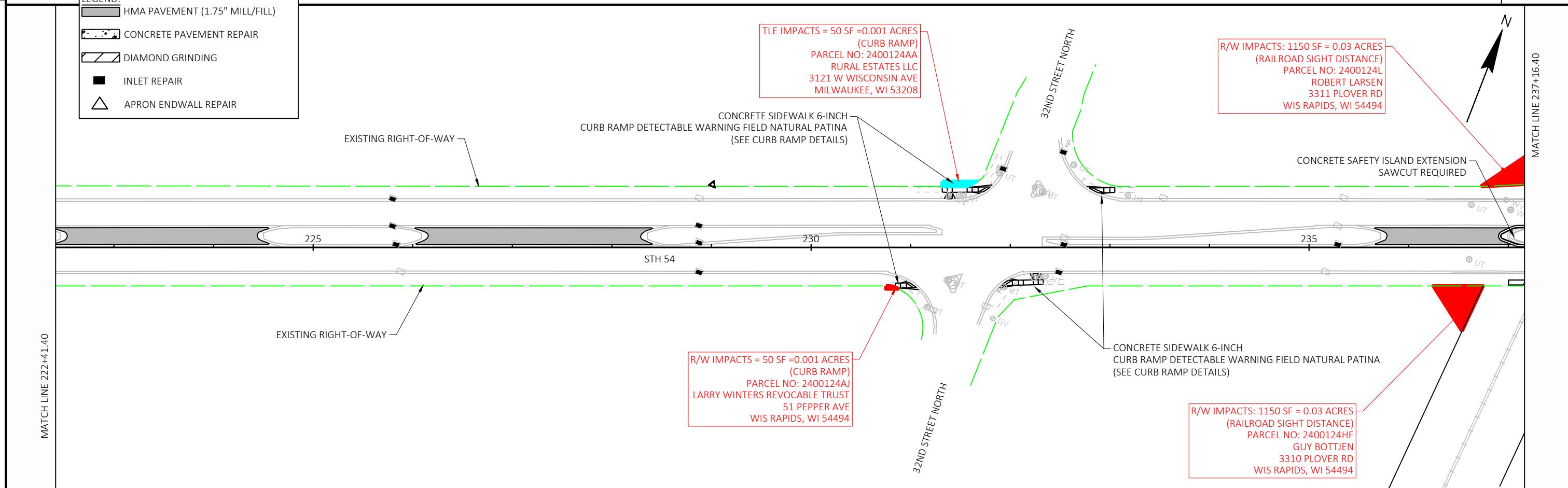
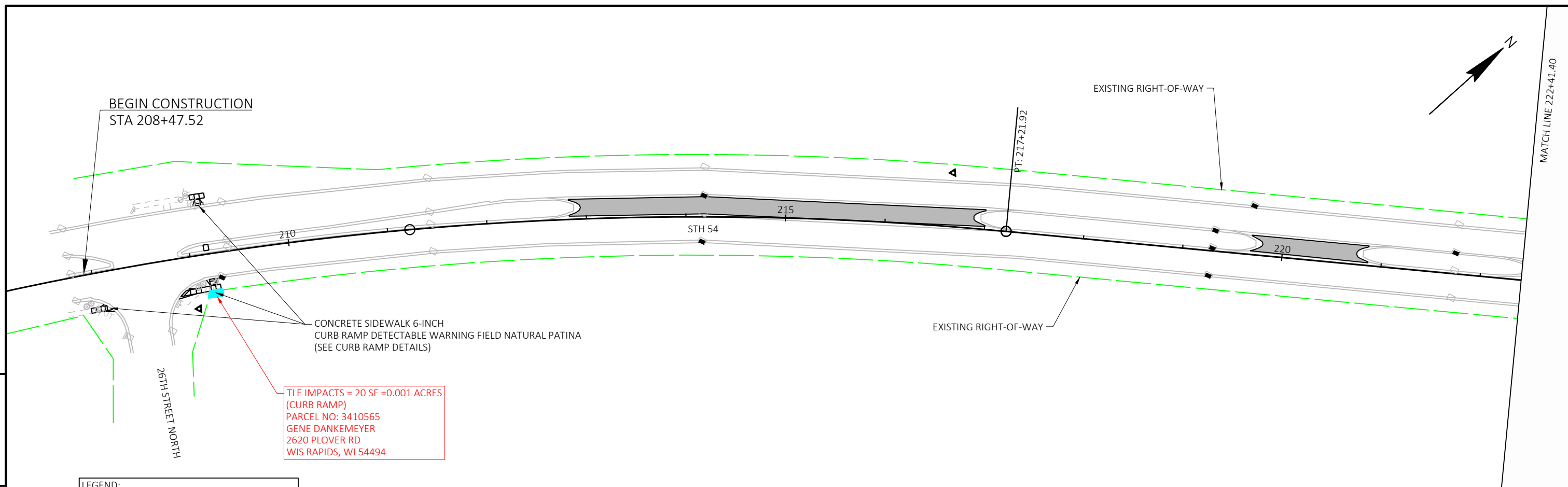


BREAKDOWNS OF SPECIFIC CURB RAMP AREAS AND RAILROAD VISION CORNERS WITH REAL ESTATE IMPACTS



PROJECT NO: 1520-01-60

HWY: STH 54

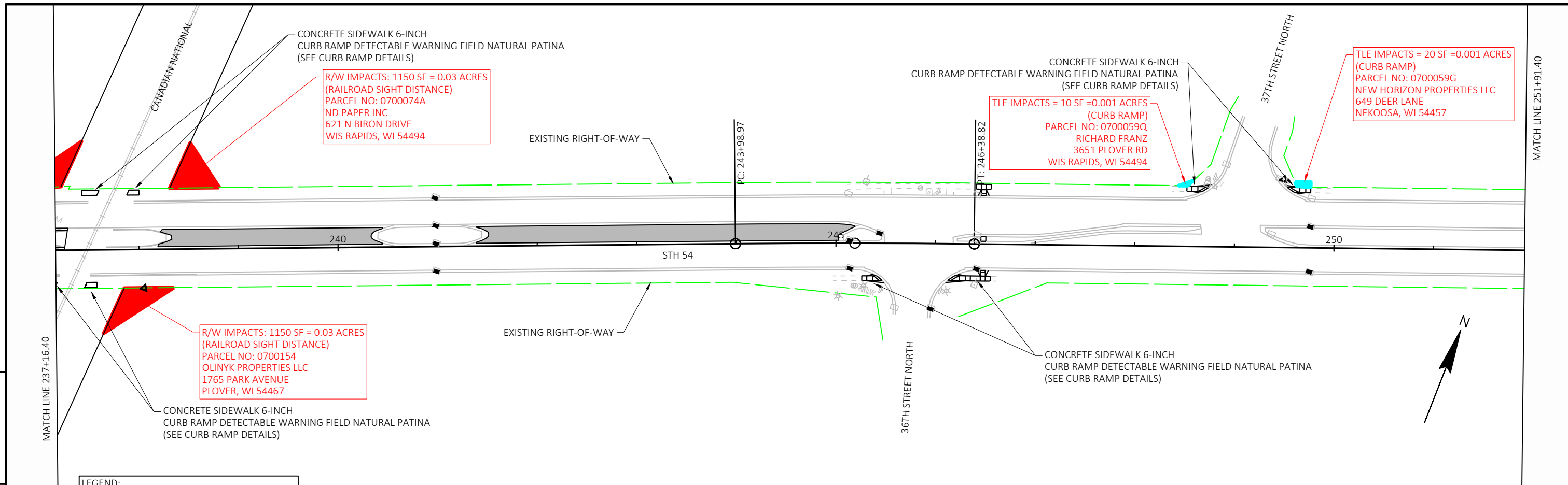
COUNTY: PORTAGE

PLAN SHEETS

SHEET

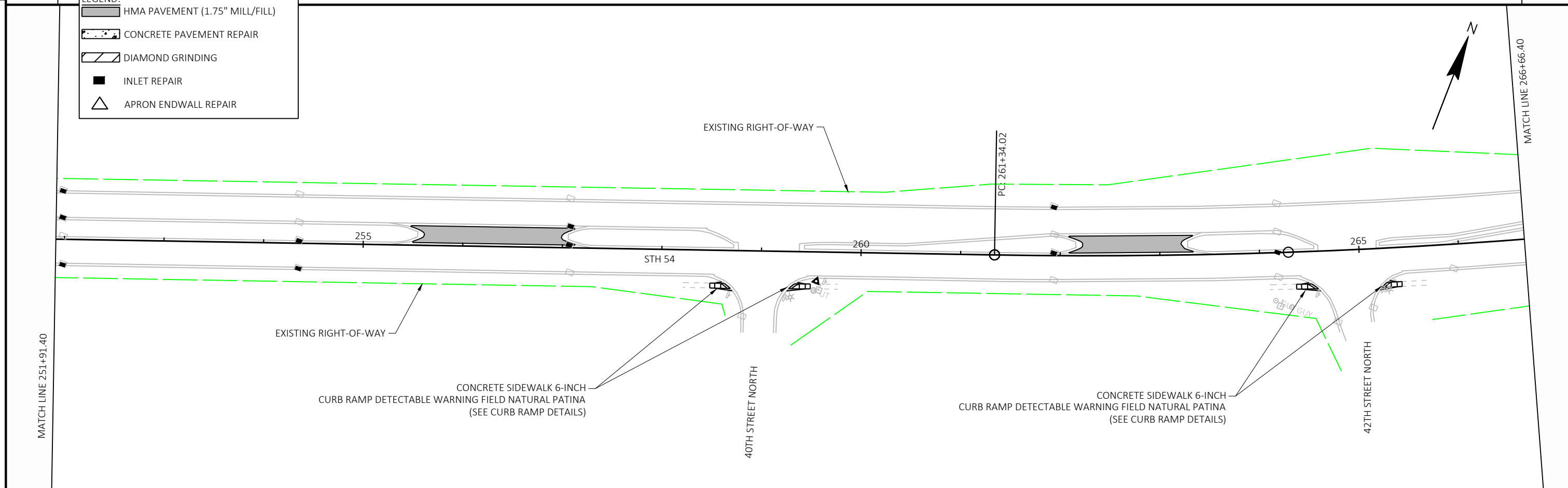
E

BREAKDOWNS OF SPECIFIC CURB RAMP AREAS AND RAILROAD VISION CORNERS WITH REAL ESTATE IMPACTS



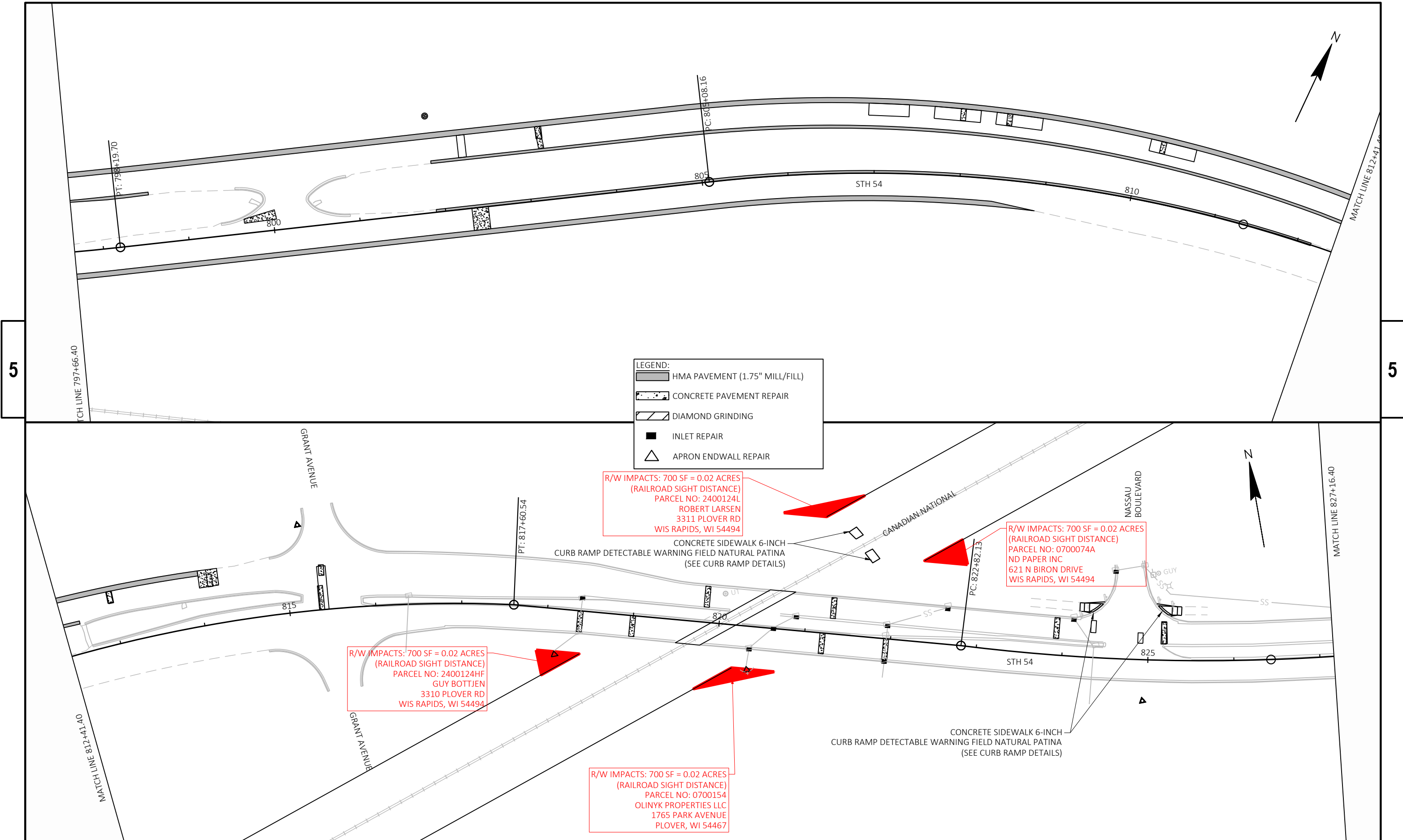
LEGEND:

	HMA PAVEMENT (1.75" MILL/FILL)
	CONCRETE PAVEMENT REPAIR
	DIAMOND GRINDING
	INLET REPAIR
	APRON ENDWALL REPAIR



PROJECT NO: 1520-01-60	HWY: STH 54	COUNTY: PORTAGE	PLAN SHEETS	SHEET	E
------------------------	-------------	-----------------	-------------	-------	---

BREAKDOWNS OF SPECIFIC CURB RAMP AREAS AND RAILROAD VISION CORNERS WITH REAL ESTATE IMPACTS



PROJECT NO: 1520-01-60

HWY: STH 54

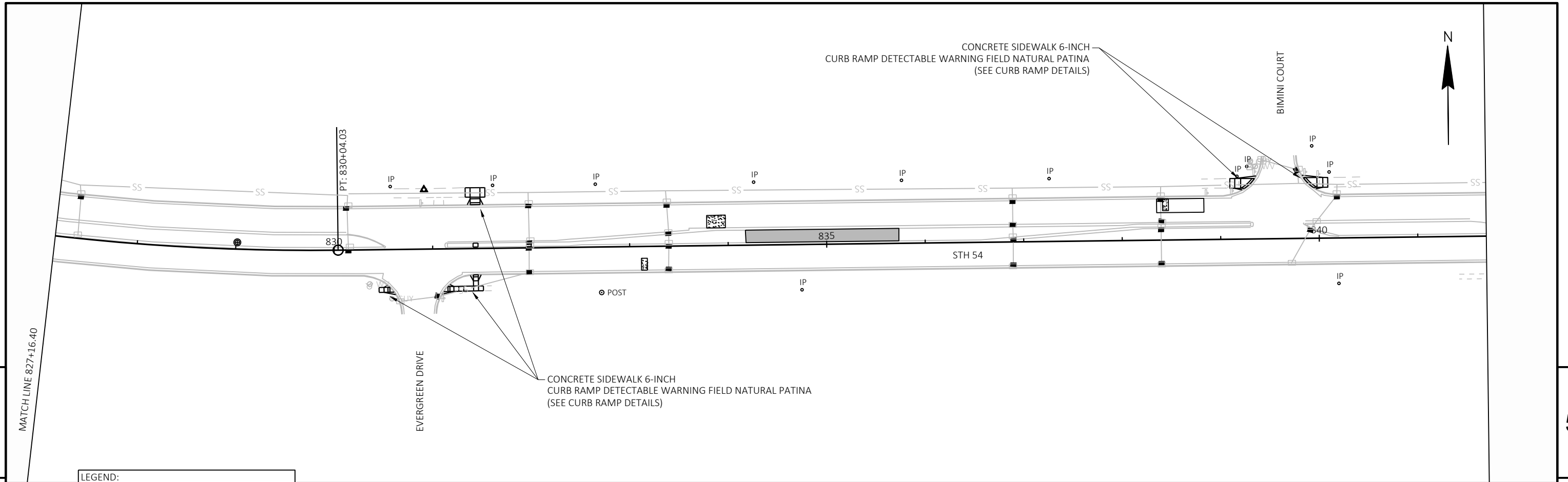
COUNTY: PORTAGE

PLAN SHEETS

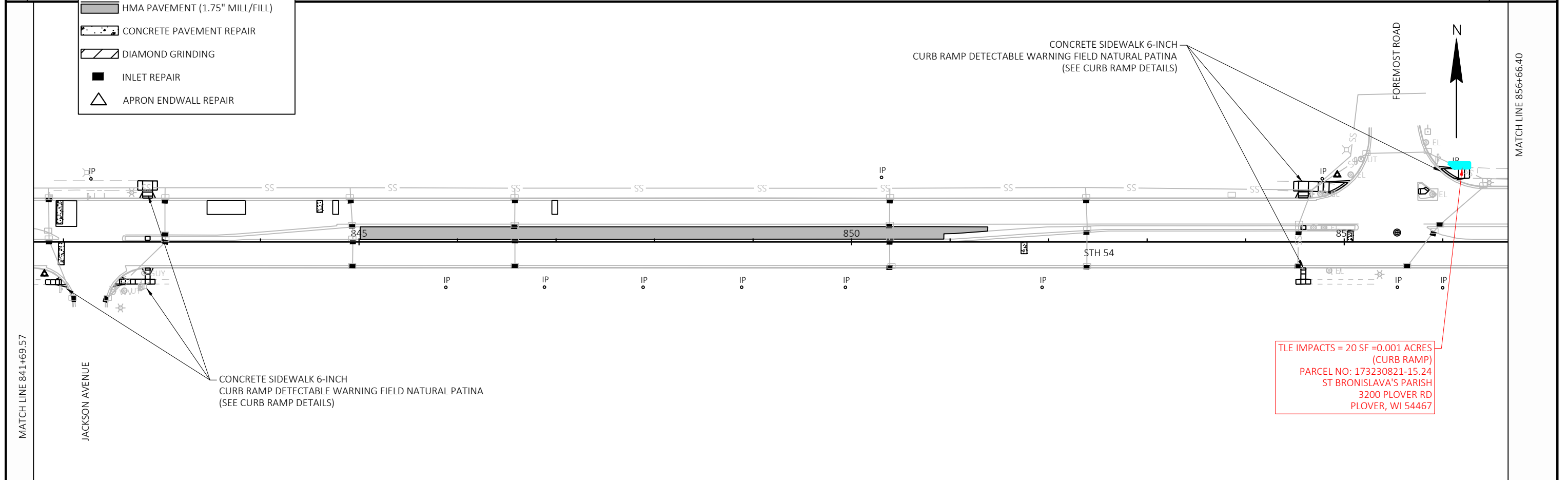
SHEET

E

BREAKDOWNS OF SPECIFIC CURB RAMP AREAS AND RAILROAD VISION CORNERS WITH REAL ESTATE IMPACTS



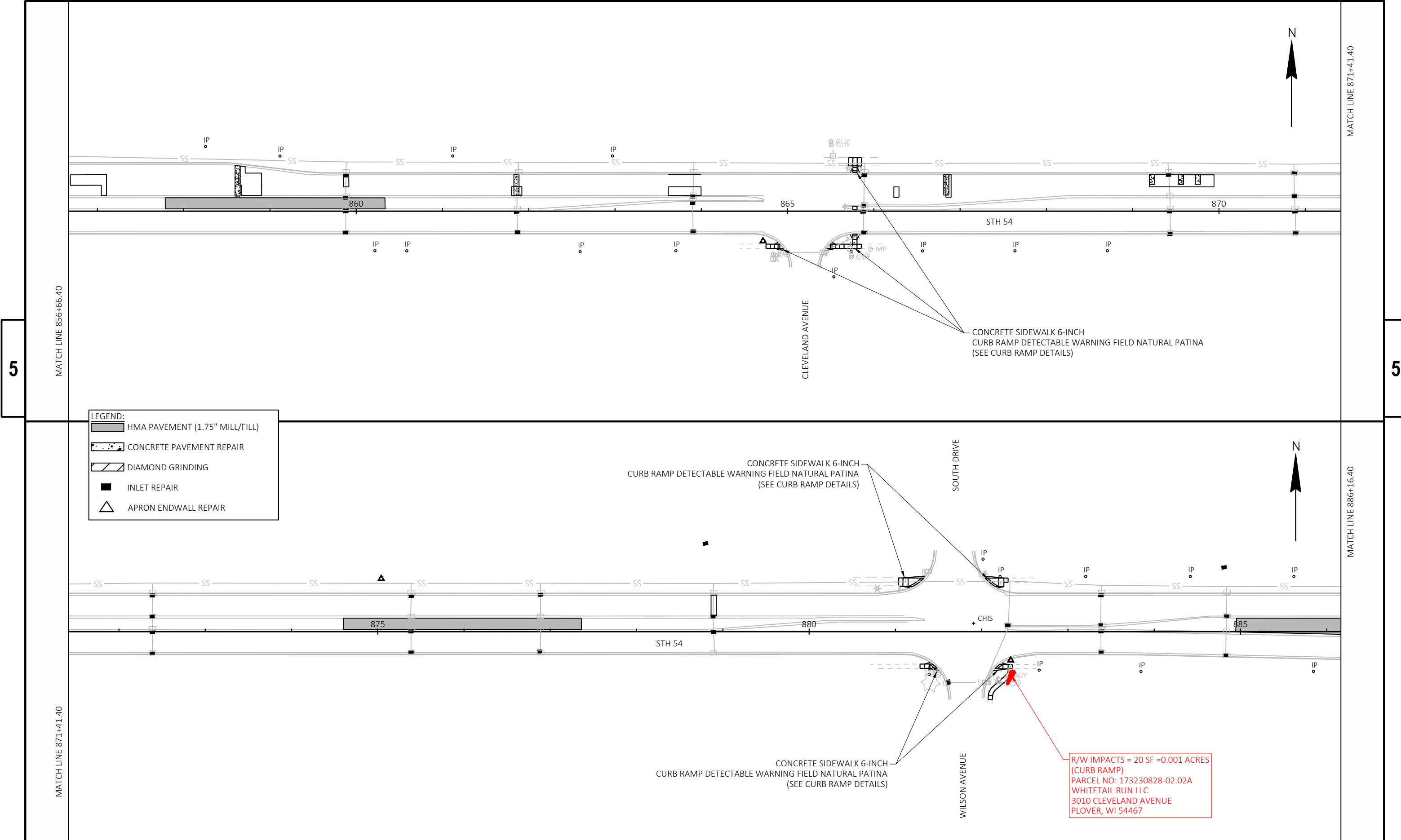
- LEGEND:
- HMA PAVEMENT (1.75" MILL/FILL)
 - CONCRETE PAVEMENT REPAIR
 - DIAMOND GRINDING
 - INLET REPAIR
 - APRON ENDWALL REPAIR



TLE IMPACTS = 20 SF = 0.001 ACRES
(CURB RAMP)
PARCEL NO: 173230821-15.24
ST BRONISLAVA'S PARISH
3200 PLOVER RD
PLOVER, WI 54467

PROJECT NO: 1520-01-60	HWY: STH 54	COUNTY: PORTAGE	PLAN SHEETS	SHEET	E
------------------------	-------------	-----------------	-------------	-------	---

BREAKDOWNS OF SPECIFIC CURB RAMP AREAS AND RAILROAD VISION CORNERS WITH REAL ESTATE IMPACTS



5

5

PROJECT NO: 1520-01-60	HWY: STH 54	COUNTY: PORTAGE	PLAN SHEETS	SHEET	E
------------------------	-------------	-----------------	-------------	-------	---