

BEGIN PROJECT  
STA 224+04.08  
MATCH EXISTING  
SAW CUT REQ'D

END PROJECT  
STA 284+91.90  
MATCH EXISTING  
SAW CUT REQ'D

**LEGEND**

- 176 EXISTING PARKING STALLS
- PARKING STALL IN T INTERSECTION (NOT ALLOWED PER STATE STATUTE) (14)
- PARKING STALL LOCATED PARTIALLY IN VISION TRIANGLE (16)
- \$131,000 MILL/OVERLAY PARKING LANES (2 PASS)
- \$70,000 MILL/OVERLAY PARKING LANES (1 PASS)

PROJECT NO: 1430-08-83	HWY: STH 23	COUNTY: GREEN LAKE	PROJECT OVERVIEW	SHEET	<b>E</b>
------------------------	-------------	--------------------	------------------	-------	----------

LEGEND

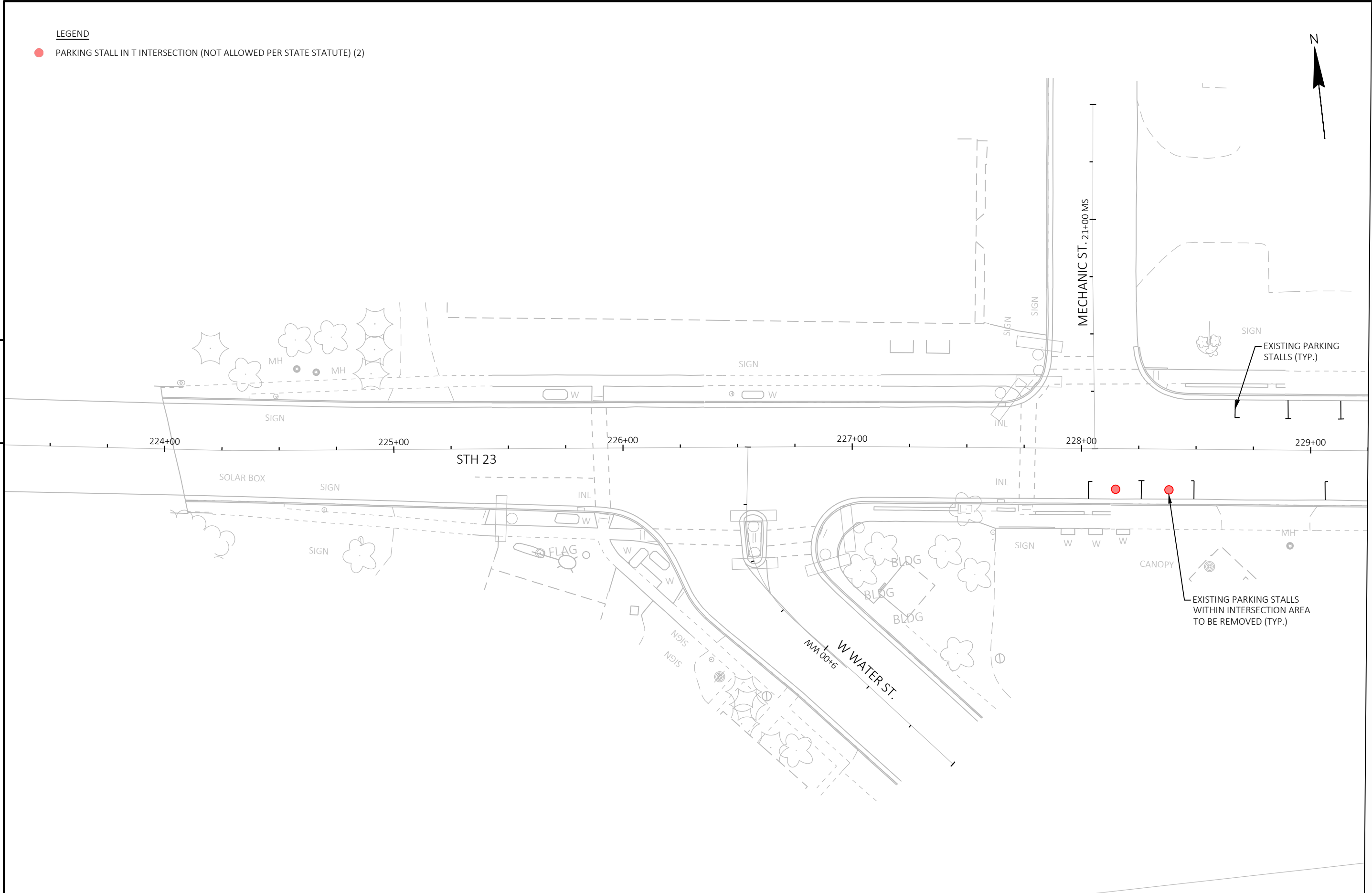
● PARKING STALL IN T INTERSECTION (NOT ALLOWED PER STATE STATUTE) (2)

N



5

5



MATCH LINE 229+25

PROJECT NO: 1430-08-83	HWY: STH 23	COUNTY: GREEN LAKE	PAVEMENT MARKING	SHEET	E
------------------------	-------------	--------------------	------------------	-------	---

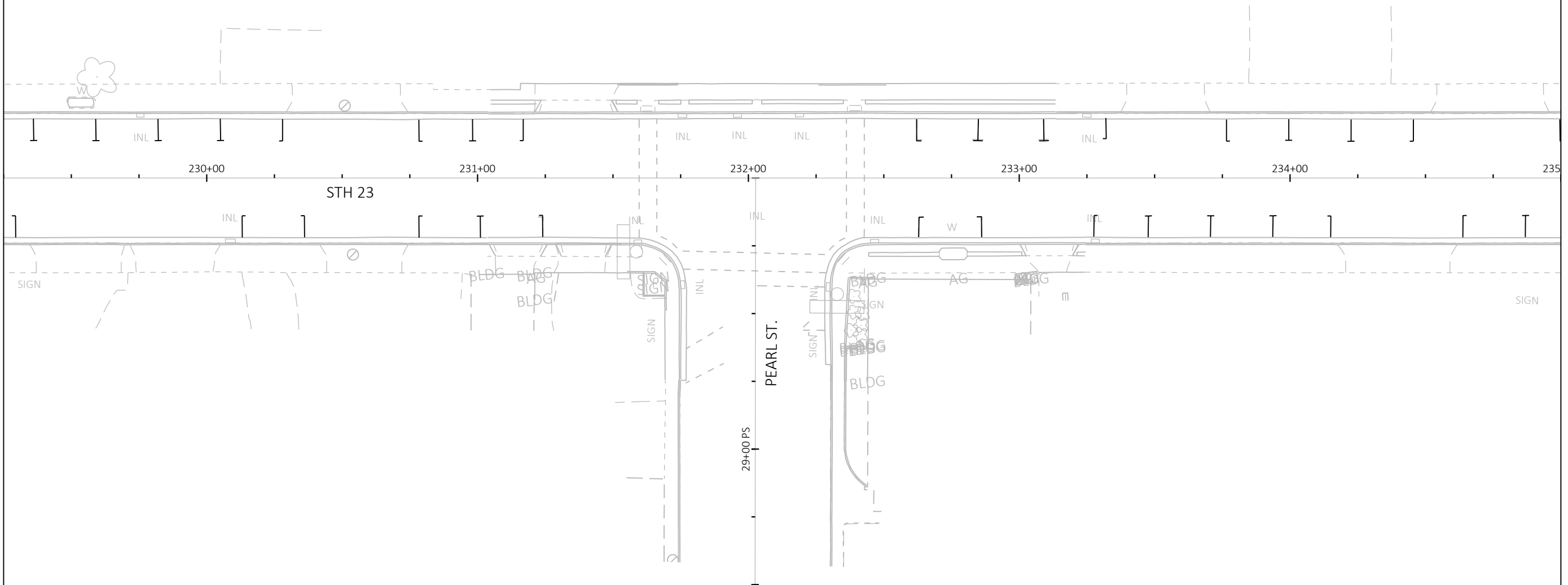
LEGEND

● PARKING STALL IN T INTERSECTION (NOT ALLOWED PER STATE STATUTE) (0)



5

MATCH LINE 229+25



5

MATCH LINE 235+00

PROJECT NO: 1430-08-83

HWY: STH 23

COUNTY: GREEN LAKE

PAVEMENT MARKING

SHEET

E

LEGEND

● PARKING STALL IN T INTERSECTION (NOT ALLOWED PER STATE STATUTE) (2)



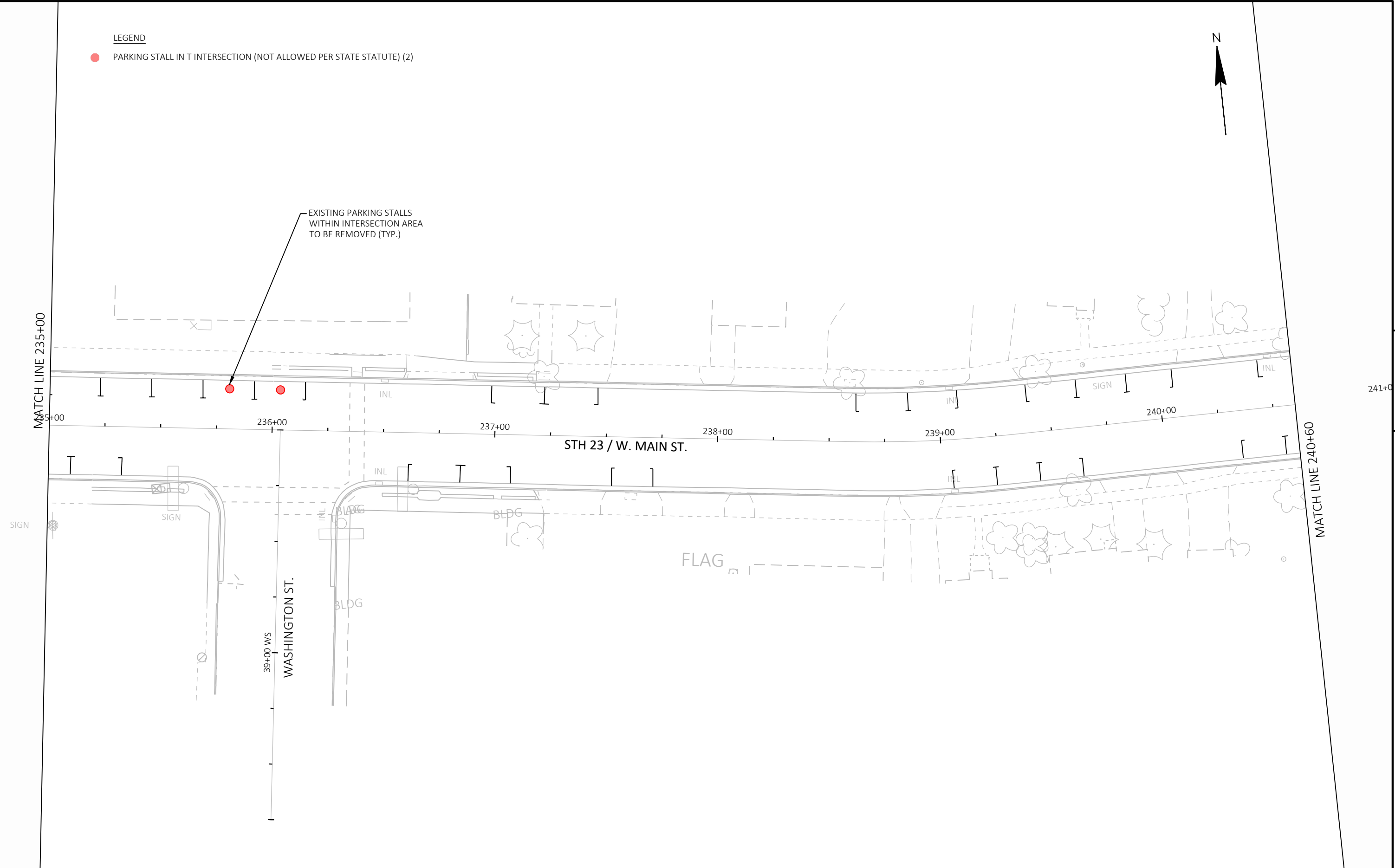
EXISTING PARKING STALLS  
WITHIN INTERSECTION AREA  
TO BE REMOVED (TYP.)

5

5

MATCH LINE 235+00

MATCH LINE 240+60



PROJECT NO: 1430-08-83	HWY: STH 23	COUNTY: GREEN LAKE	PAVEMENT MARKING	SHEET	E
------------------------	-------------	--------------------	------------------	-------	---

LEGEND

● PARKING STALL IN T INTERSECTION (NOT ALLOWED PER STATE STATUTE) (3)

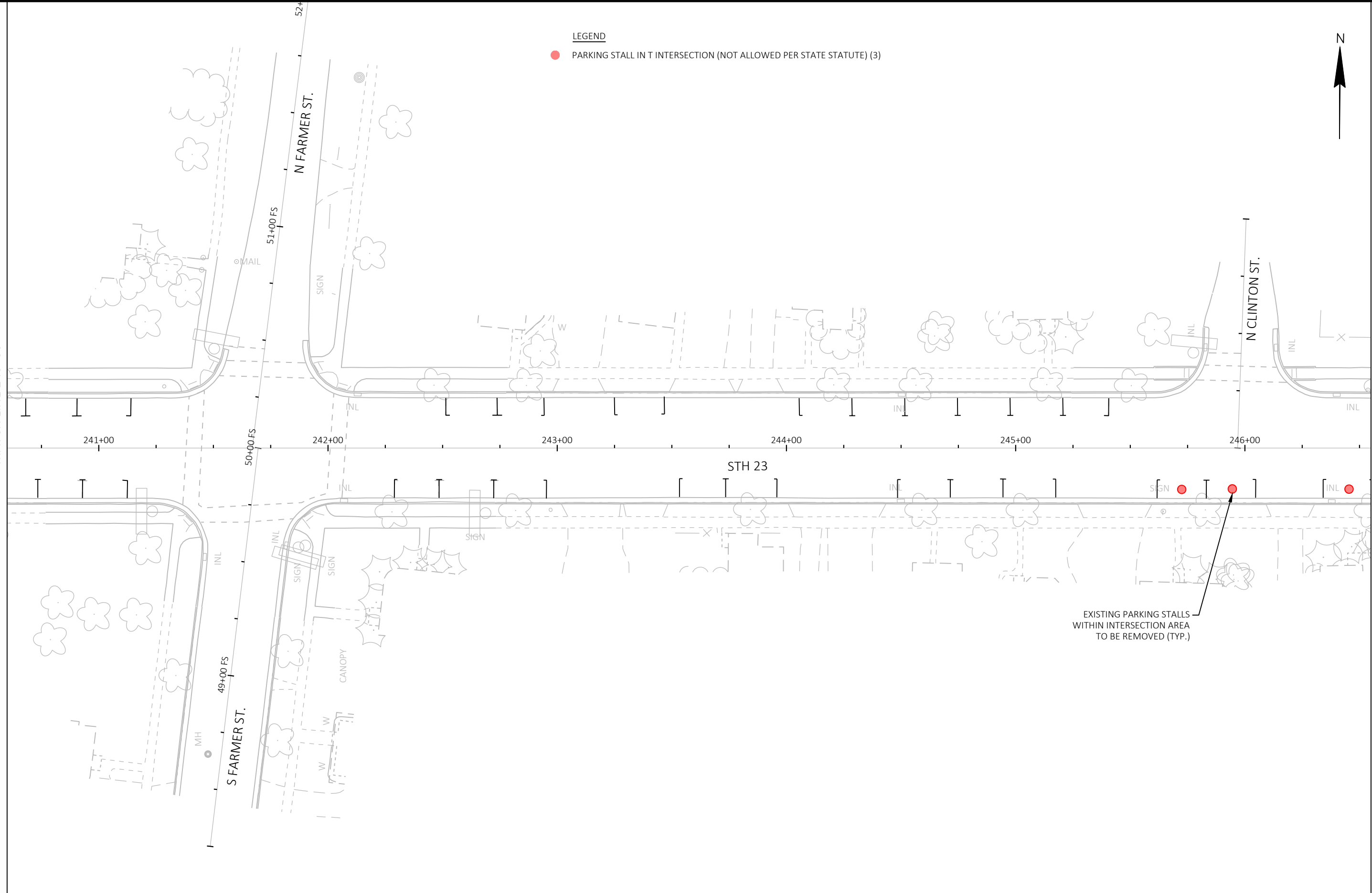


5

5

MATCH LINE 240+60

MATCH LINE 246+55



EXISTING PARKING STALLS  
WITHIN INTERSECTION AREA  
TO BE REMOVED (TYP.)

PROJECT NO: 1430-08-83	HWY: STH 23	COUNTY: GREEN LAKE	PAVEMENT MARKING	SHEET	E
------------------------	-------------	--------------------	------------------	-------	---

LEGEND

● PARKING STALL IN T INTERSECTION (NOT ALLOWED PER STATE STATUTE) (2)



5

5

MATCH LINE 246+55

MATCH LINE 252+35

INL

SGN

STH 23

EXISTING PARKING STALLS  
WITHIN INTERSECTION AREA  
TO BE REMOVED (TYP.)

247+00

248+00

249+00

250+00

251+00

252+00

N HOWARD ST.  
71+00 HS

GUY

RAMP

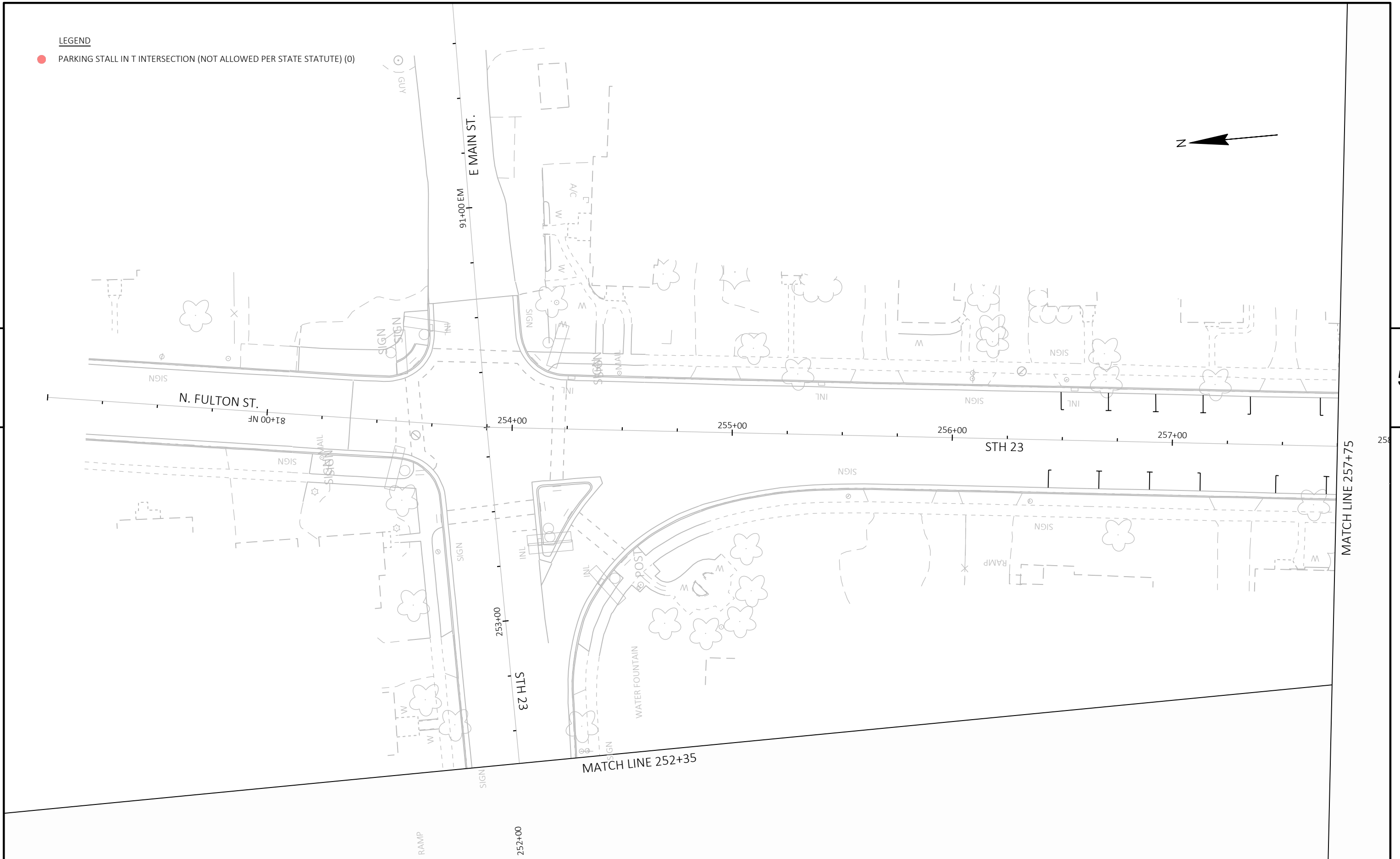
LEGEND

● PARKING STALL IN T INTERSECTION (NOT ALLOWED PER STATE STATUTE) (0)



5

5



PROJECT NO: 1430-08-83

HWY: STH 23

COUNTY: GREEN LAKE

PAVEMENT MARKING

SHEET

E

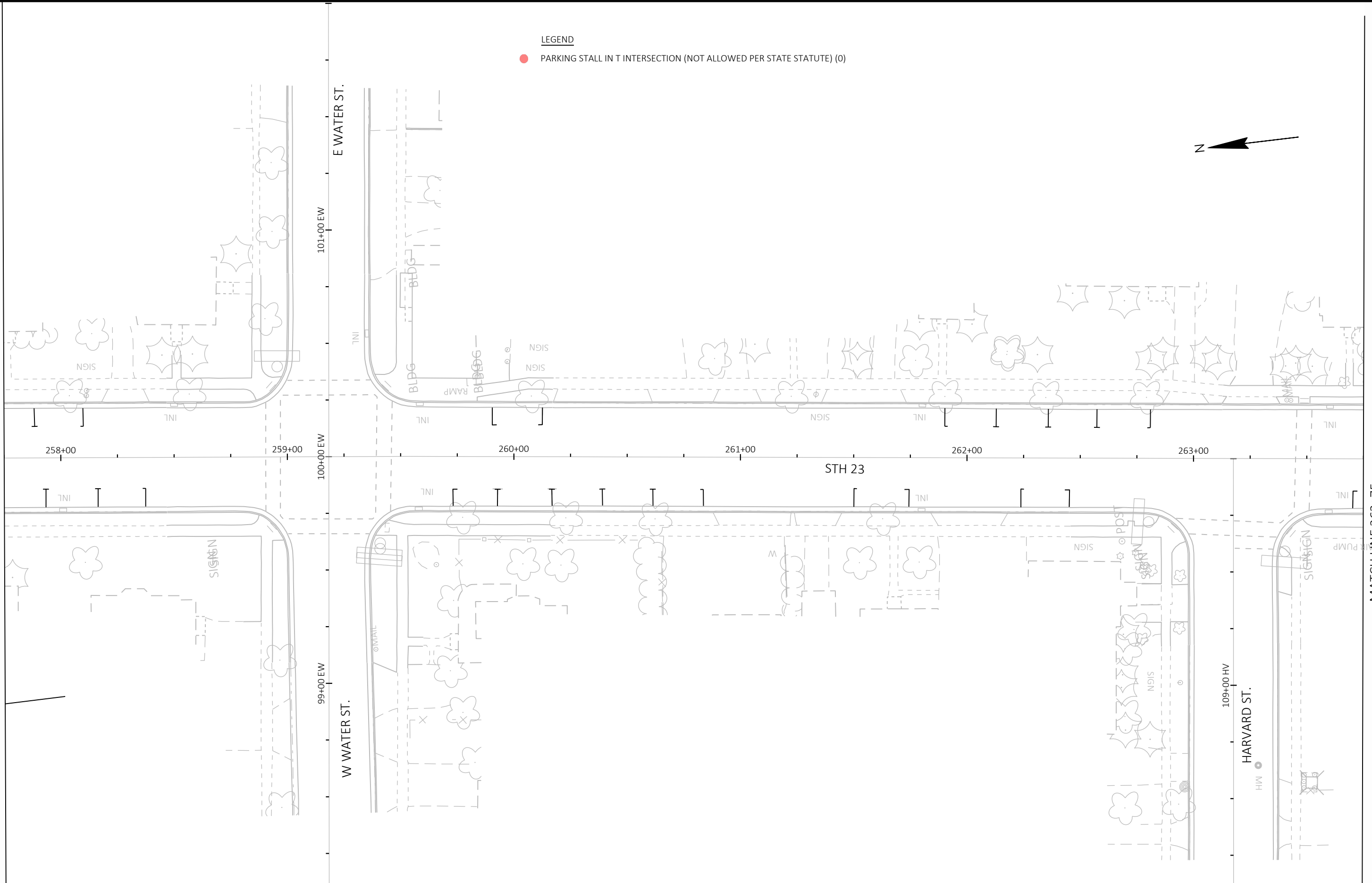
LEGEND

● PARKING STALL IN T INTERSECTION (NOT ALLOWED PER STATE STATUTE) (0)



5

MATCH LINE 257+75



5

MATCH LINE 263+75

PROJECT NO: 1430-08-83

HWY: STH 23

COUNTY: GREEN LAKE

PAVEMENT MARKING

SHEET

E



LEGEND

- PARKING STALL IN T INTERSECTION (NOT ALLOWED PER STATE STATUTE) (1)

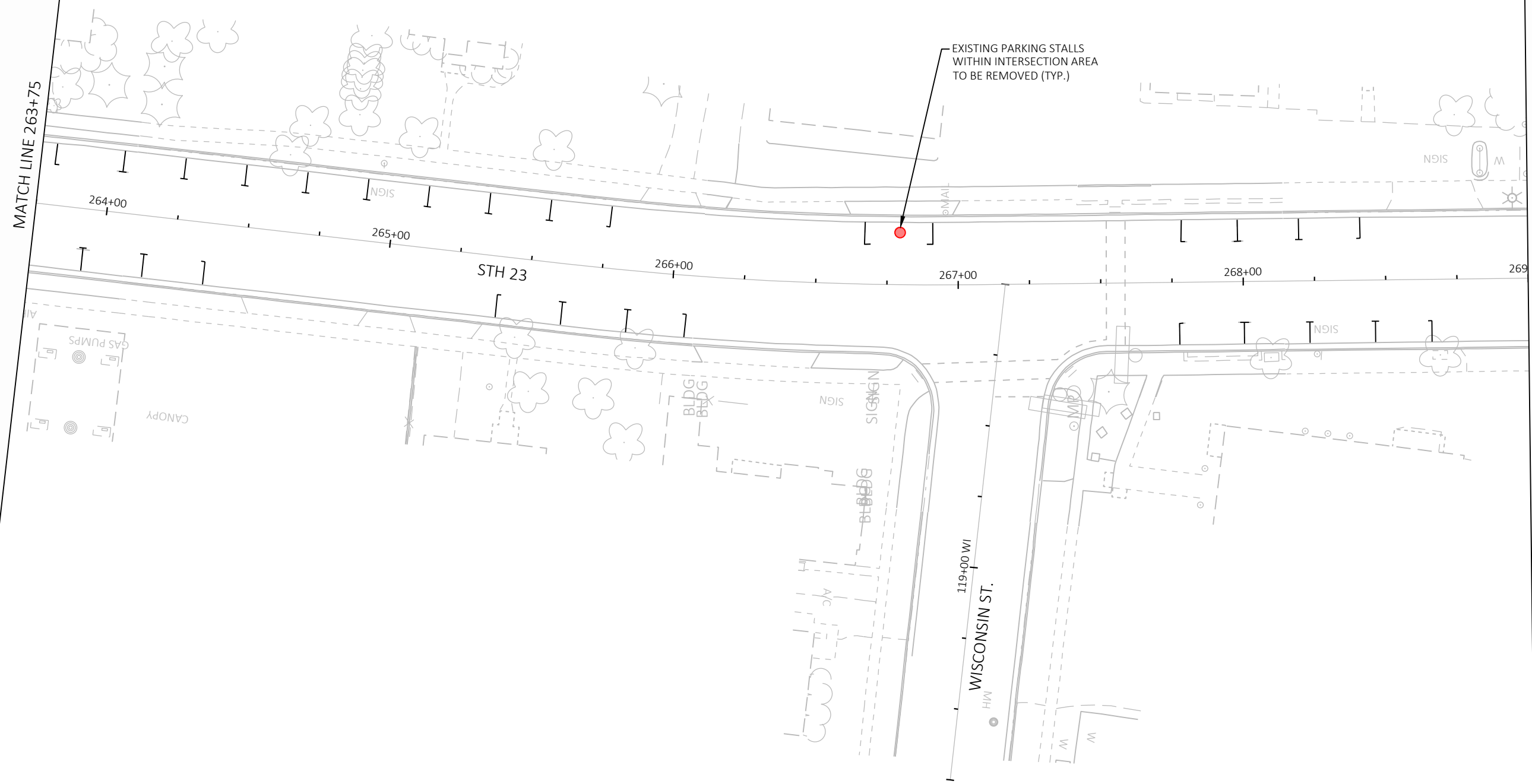


MATCH LINE 263+75

MATCH LINE 269+00

5

5



PROJECT NO: 1430-08-83

HWY: STH 23

COUNTY: GREEN LAKE

PAVEMENT MARKING

SHEET

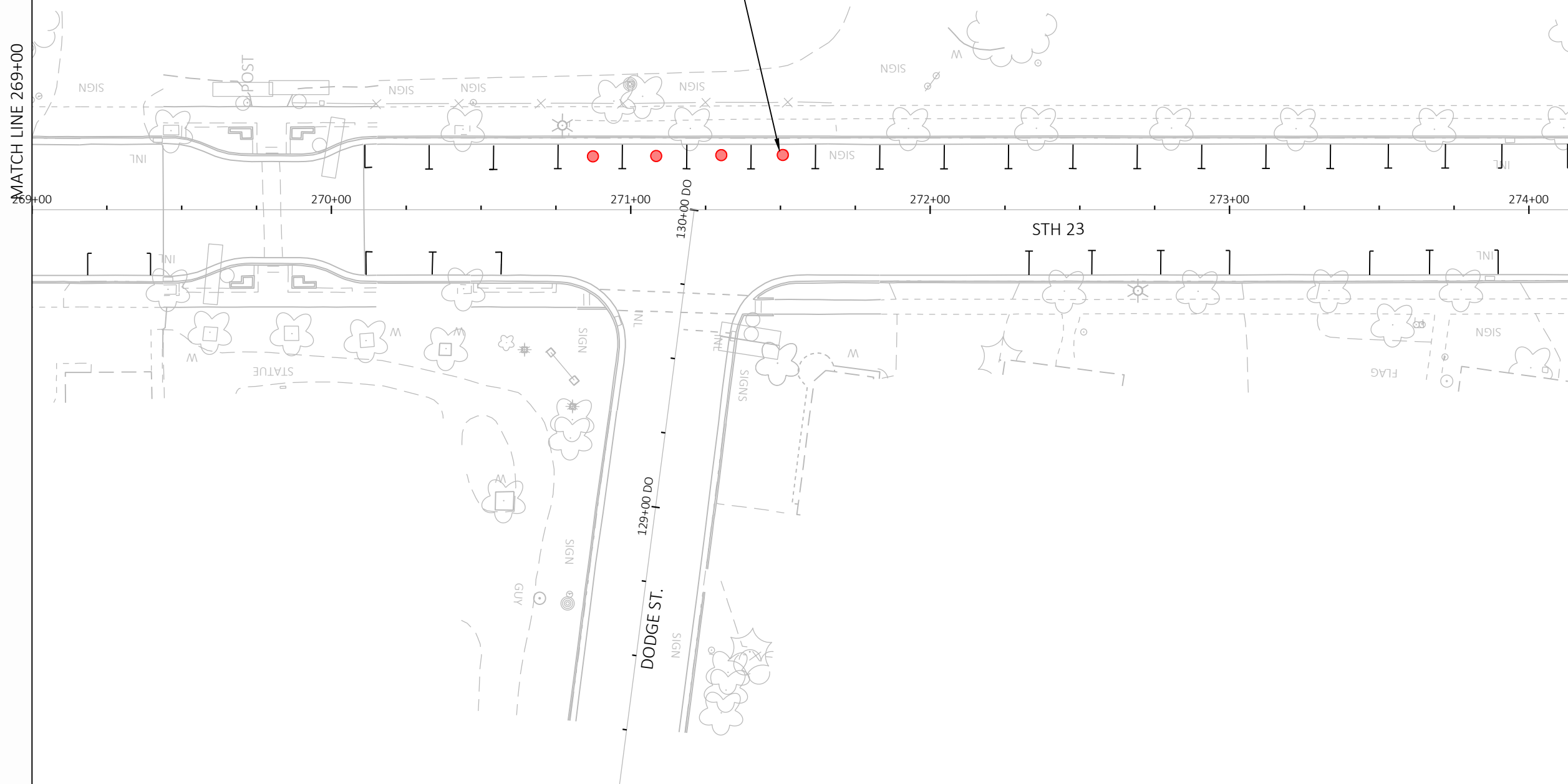
E

LEGEND

● PARKING STALL IN T INTERSECTION (NOT ALLOWED PER STATE STATUTE) (4)



EXISTING PARKING STALLS  
WITHIN INTERSECTION AREA  
TO BE REMOVED (TYP.)



5

5

PROJECT NO: 1430-08-83

HWY: STH 23

COUNTY: GREEN LAKE

PAVEMENT MARKING

SHEET

E

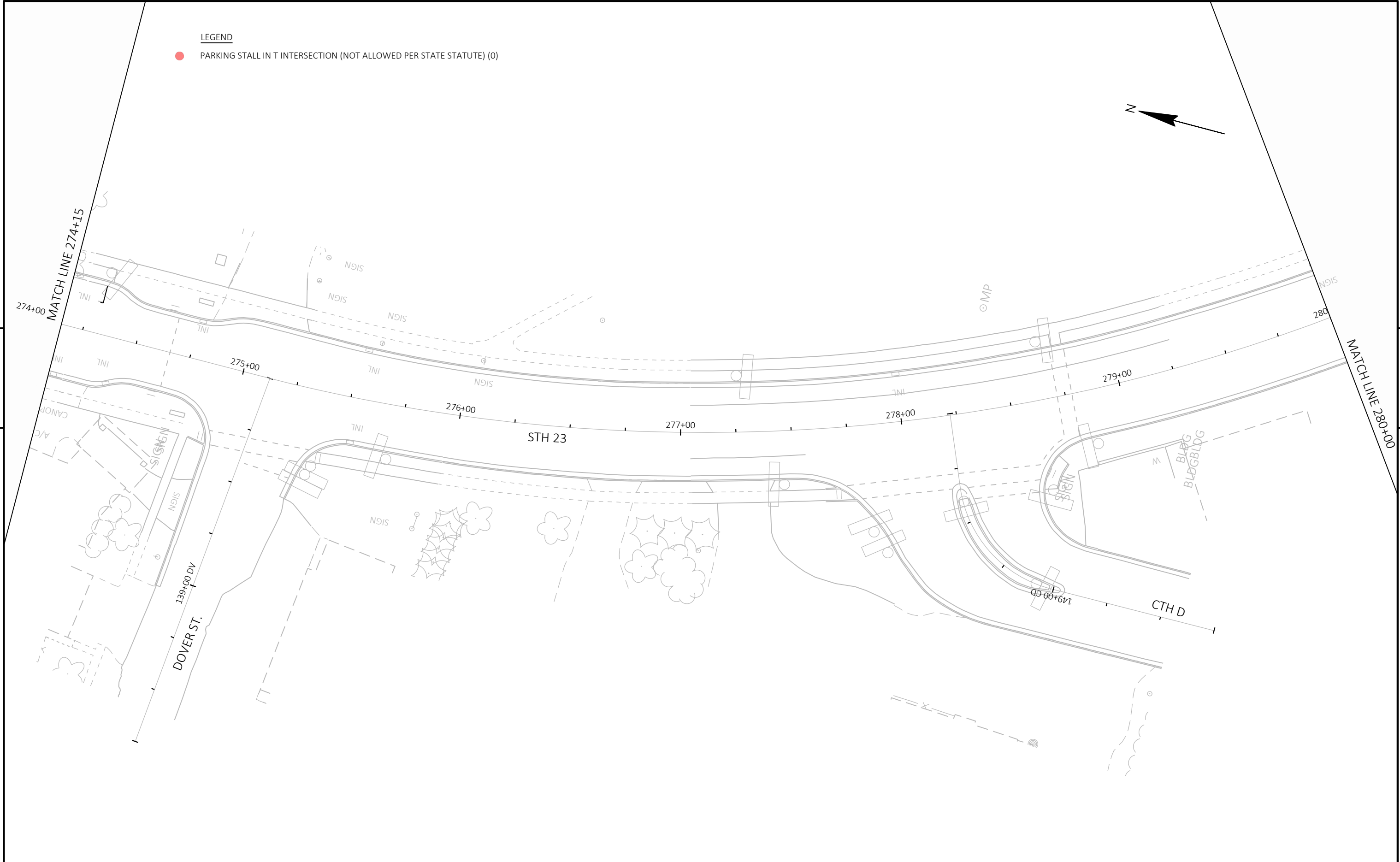
LEGEND

● PARKING STALL IN T INTERSECTION (NOT ALLOWED PER STATE STATUTE) (0)



5

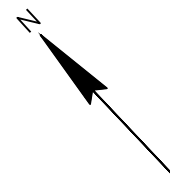
5



PROJECT NO: 1430-08-83	HWY: STH 23	COUNTY: GREEN LAKE	PAVEMENT MARKING	SHEET	E
------------------------	-------------	--------------------	------------------	-------	---

LEGEND

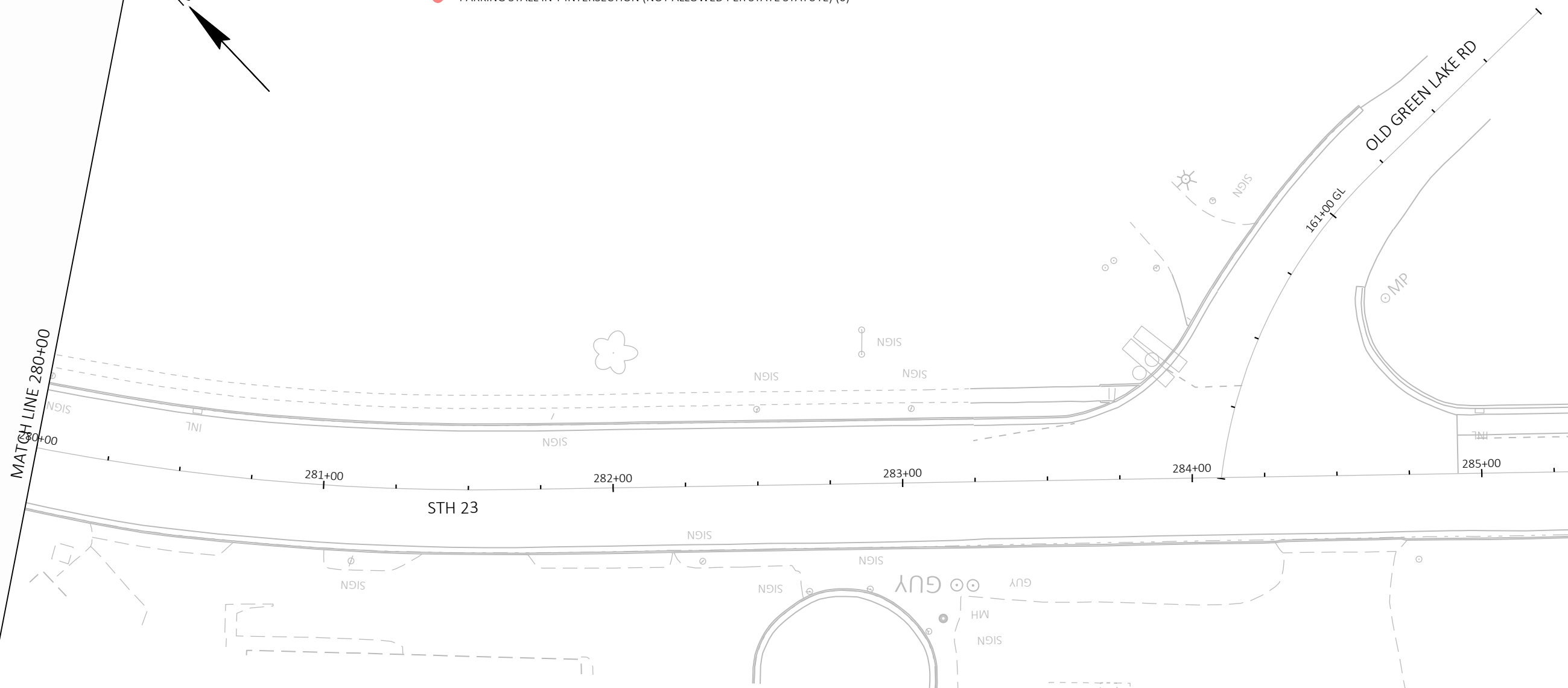
● PARKING STALL IN T INTERSECTION (NOT ALLOWED PER STATE STATUTE) (0)



MATCH LINE 280+00

5

5



PROJECT NO: 1430-08-83

HWY: STH 23

COUNTY: GREEN LAKE

PAVEMENT MARKING

SHEET

E

MINIMUM LIMITS OF NO ON-STREET PARKING - PASSENGER CAR

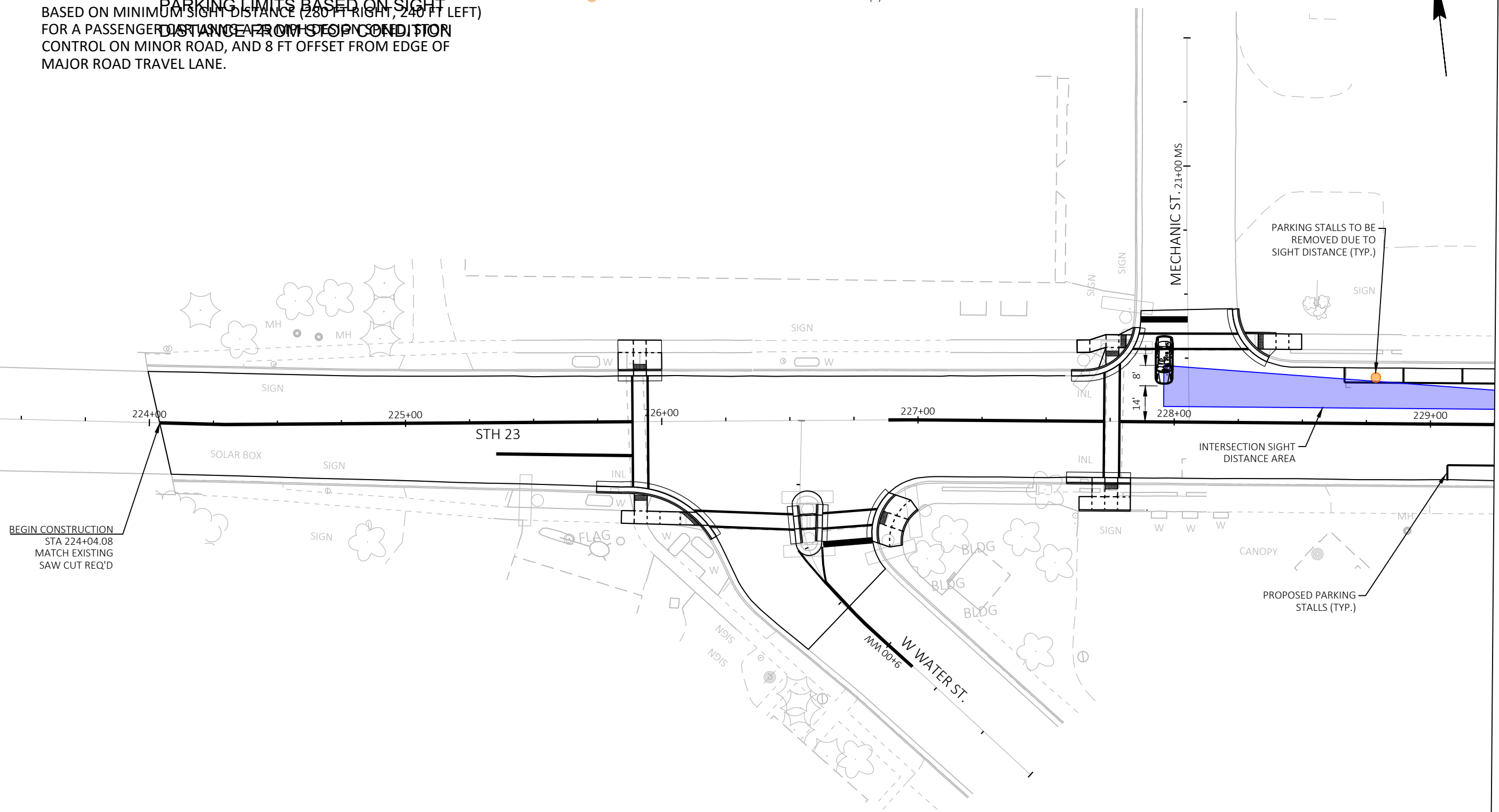
PARKING LIMITS BASED ON SIGHT  
 BASED ON MINIMUM SIGHT DISTANCE (280 FT RIGHT, 240 FT LEFT)  
 FOR A PASSENGER CAR STOPPED IN STOP CONDITION  
 DISTANCE FROM STOP CONDITION  
 CONTROL ON MINOR ROAD, AND 8 FT OFFSET FROM EDGE OF  
 MAJOR ROAD TRAVEL LANE.

LEGEND  
 ● PARKING STALL LOCATED PARTIALLY IN VISION TRIANGLE (1)



5

5



PROJECT NO: 1430-08-83	HWY: STH 23	COUNTY: GREEN LAKE	PAVEMENT MARKING	SHEET	E
------------------------	-------------	--------------------	------------------	-------	---

LEGEND

● PARKING STALL LOCATED PARTIALLY IN VISION TRIANGLE (1)



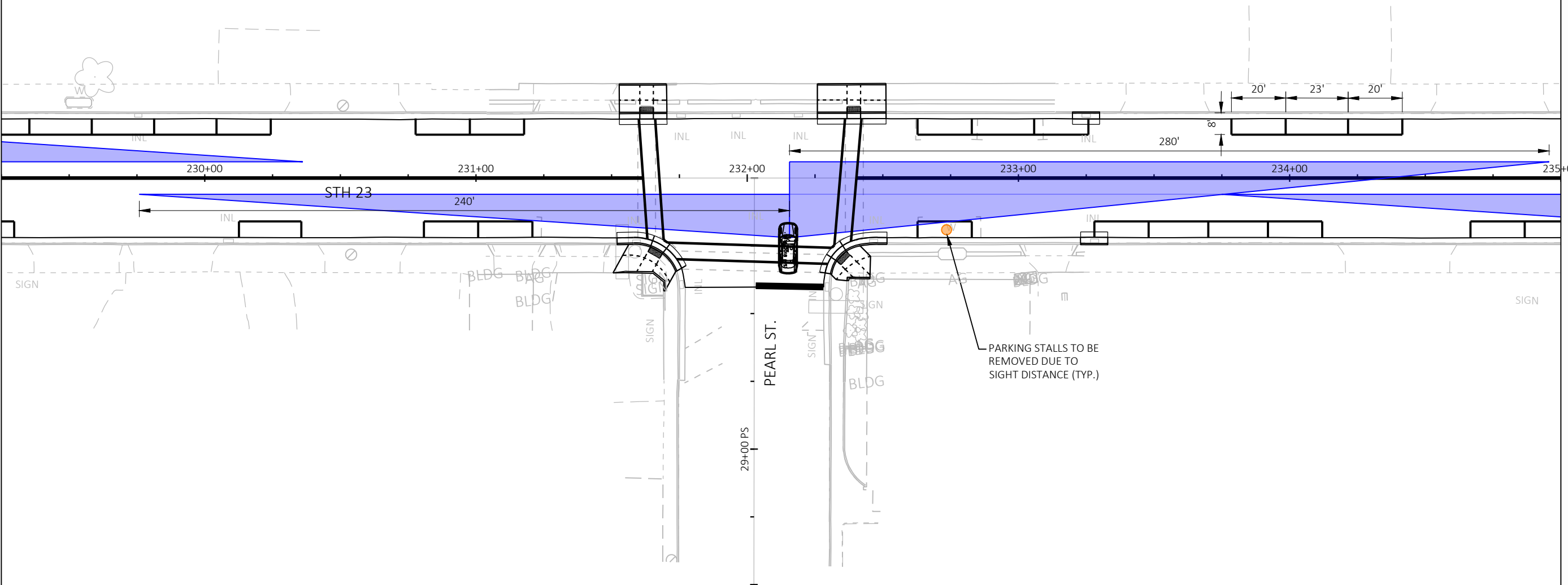
5

5

MATCH LINE 229+25

MATCH LINE 235+00

+00



PROJECT NO: 1430-08-83	HWY: STH 23	COUNTY: GREEN LAKE	PAVEMENT MARKING	SHEET	<b>E</b>
------------------------	-------------	--------------------	------------------	-------	----------

LEGEND

● PARKING STALL LOCATED PARTIALLY IN VISION TRIANGLE (2)

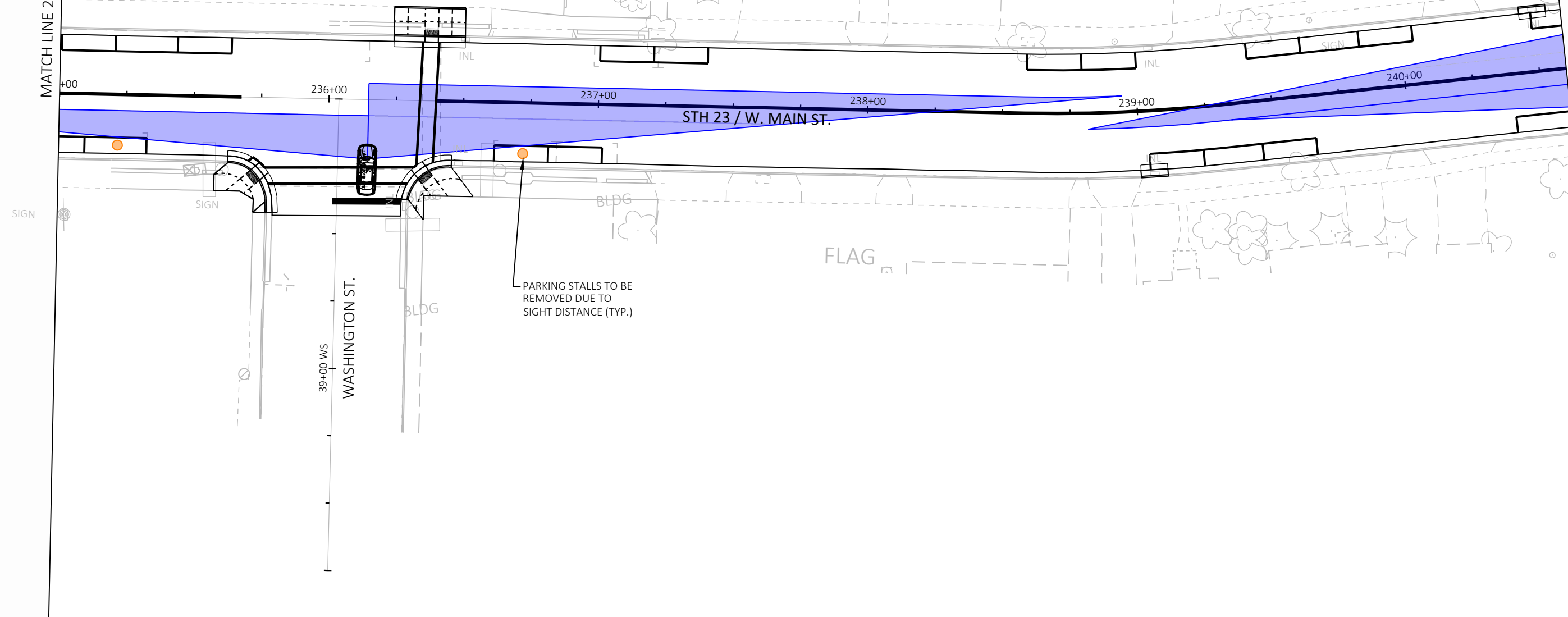


5

5

MATCH LINE 235+00

MATCH LINE 240+60



PARKING STALLS TO BE REMOVED DUE TO SIGHT DISTANCE (TYP.)

PROJECT NO: 1430-08-83	HWY: STH 23	COUNTY: GREEN LAKE	PAVEMENT MARKING	SHEET	E
------------------------	-------------	--------------------	------------------	-------	---

LEGEND

● PARKING STALL LOCATED PARTIALLY IN VISION TRIANGLE (5)



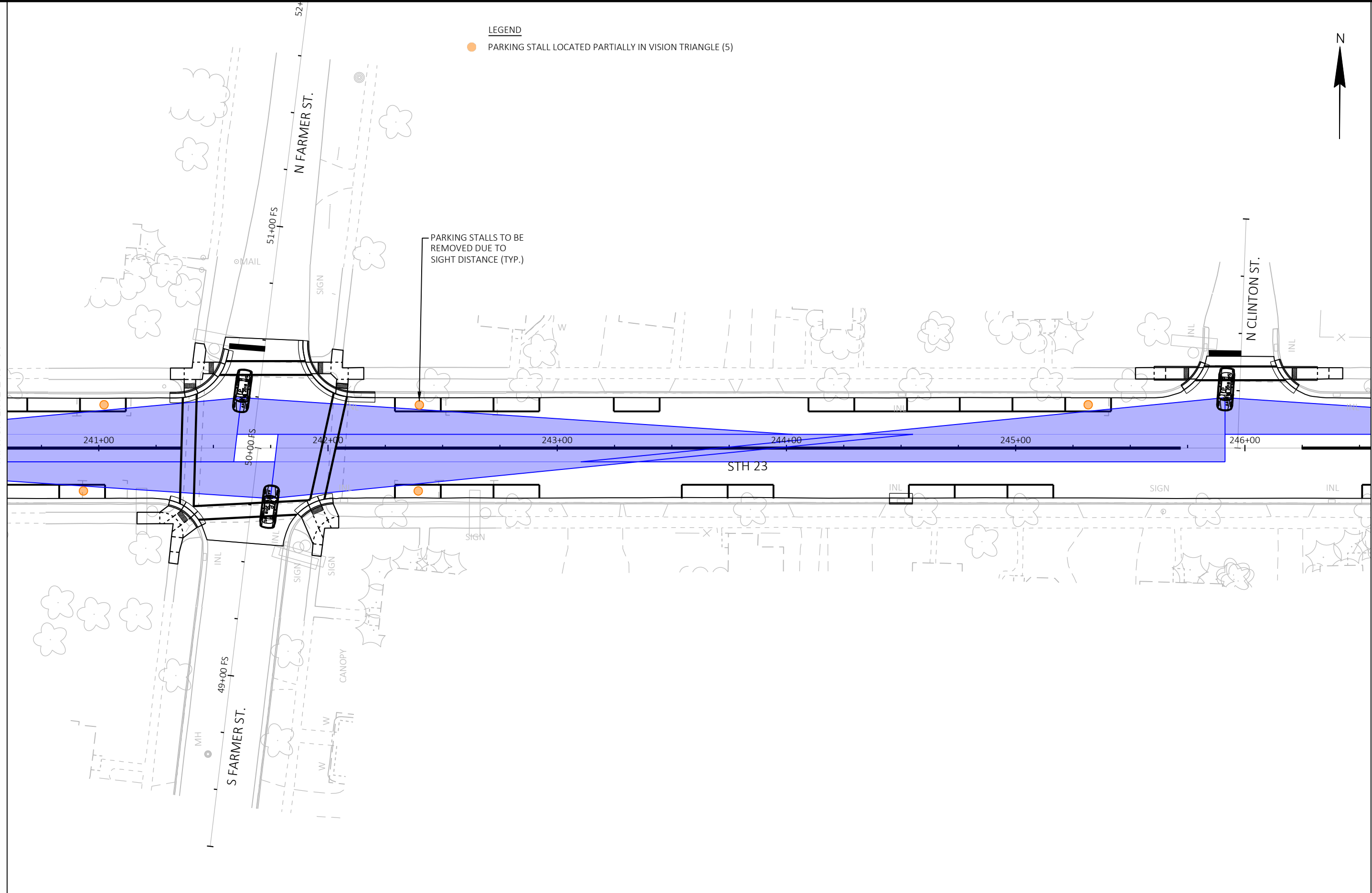
PARKING STALLS TO BE REMOVED DUE TO SIGHT DISTANCE (TYP.)

MATCH LINE 240+60

MATCH LINE 246+55

5

5



PROJECT NO: 1430-08-83	HWY: STH 23	COUNTY: GREEN LAKE	PAVEMENT MARKING	SHEET	E
------------------------	-------------	--------------------	------------------	-------	---



LEGEND

- PARKING STALL LOCATED PARTIALLY IN VISION TRIANGLE (1)



PARKING STALLS TO BE REMOVED DUE TO SIGHT DISTANCE (TYP.)

MATCH LINE 246+55

5

247+00

248+00

249+00

250+00

251+00

252+00

STH 23

N HOWARD ST.

71+00 HS

GUY

RAMP

STA 250+34.08  
MATCH EXISTING  
SAW CUT REQ'D

MATCH LINE 252+35

PROJECT NO: 1430-08-83

HWY: STH 23

COUNTY: GREEN LAKE

PAVEMENT MARKING

SHEET

E

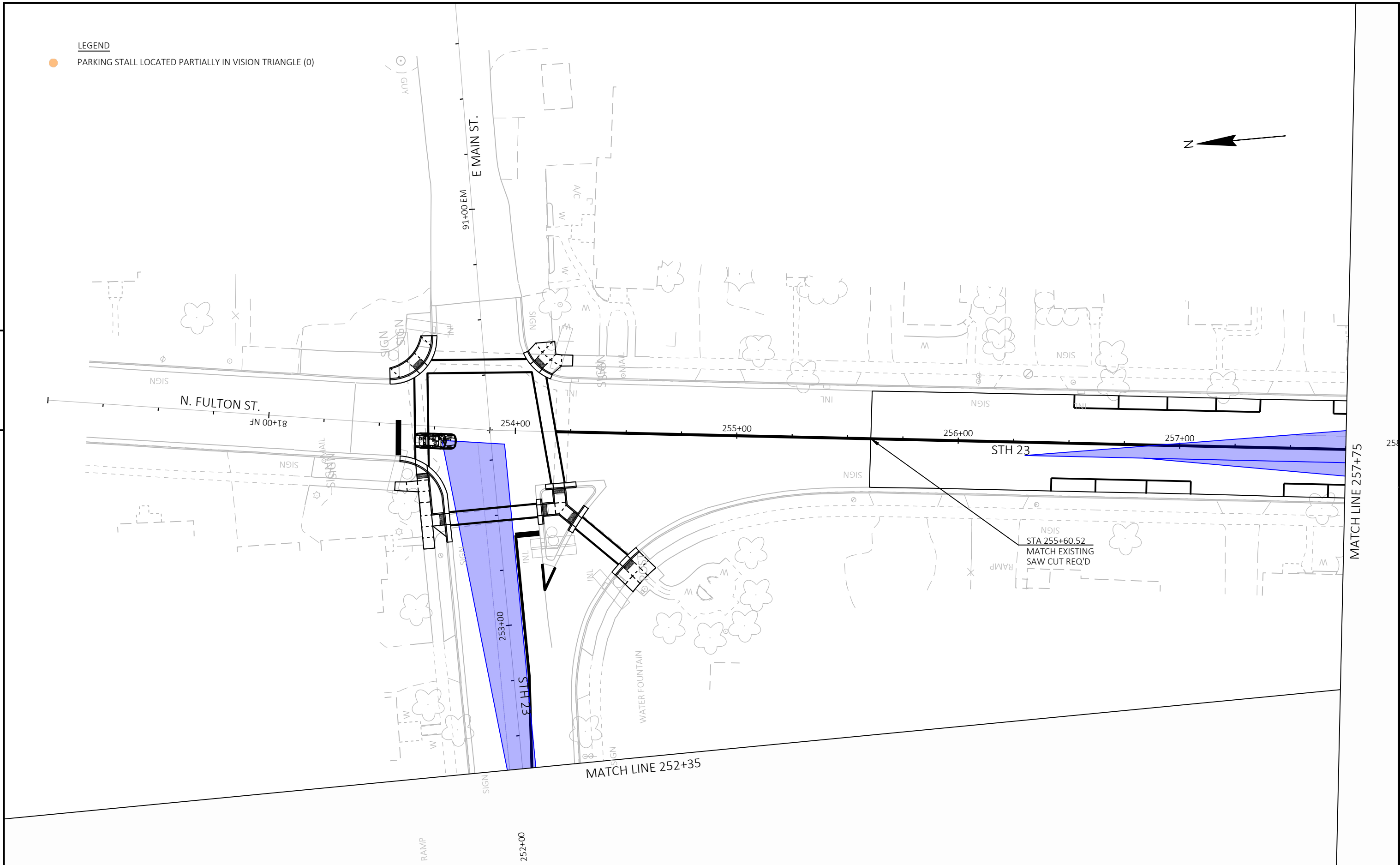
LEGEND

- PARKING STALL LOCATED PARTIALLY IN VISION TRIANGLE (0)



5

5



PROJECT NO: 1430-08-83	HWY: STH 23	COUNTY: GREEN LAKE	PAVEMENT MARKING	SHEET	E
------------------------	-------------	--------------------	------------------	-------	---

LEGEND

● PARKING STALL LOCATED PARTIALLY IN VISION TRIANGLE (3)



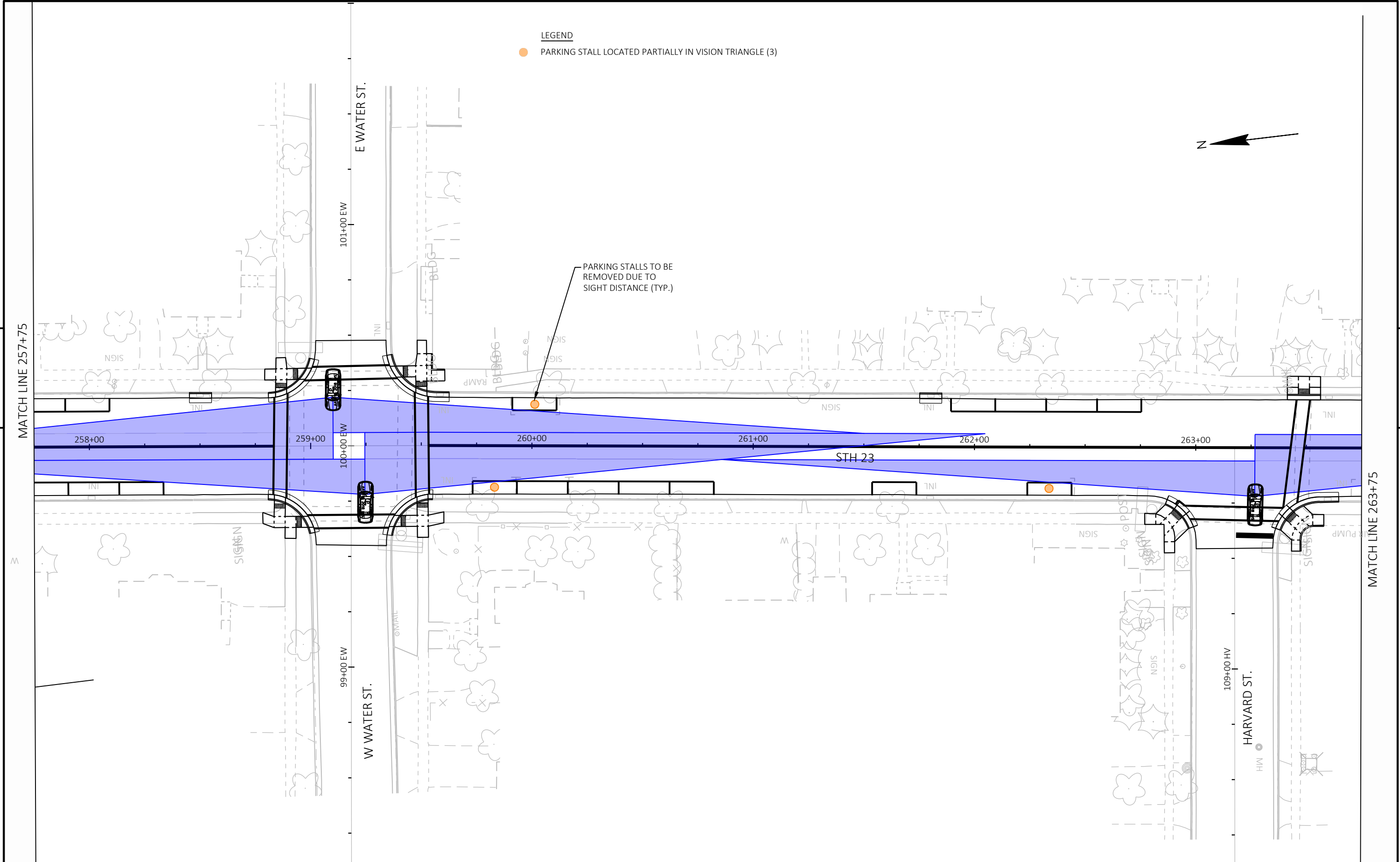
PARKING STALLS TO BE REMOVED DUE TO SIGHT DISTANCE (TYP.)

5

MATCH LINE 257+75

5

MATCH LINE 263+75



PROJECT NO: 1430-08-83	HWY: STH 23	COUNTY: GREEN LAKE	PAVEMENT MARKING	SHEET	E
------------------------	-------------	--------------------	------------------	-------	---

LEGEND

● PARKING STALL LOCATED PARTIALLY IN VISION TRIANGLE (2)

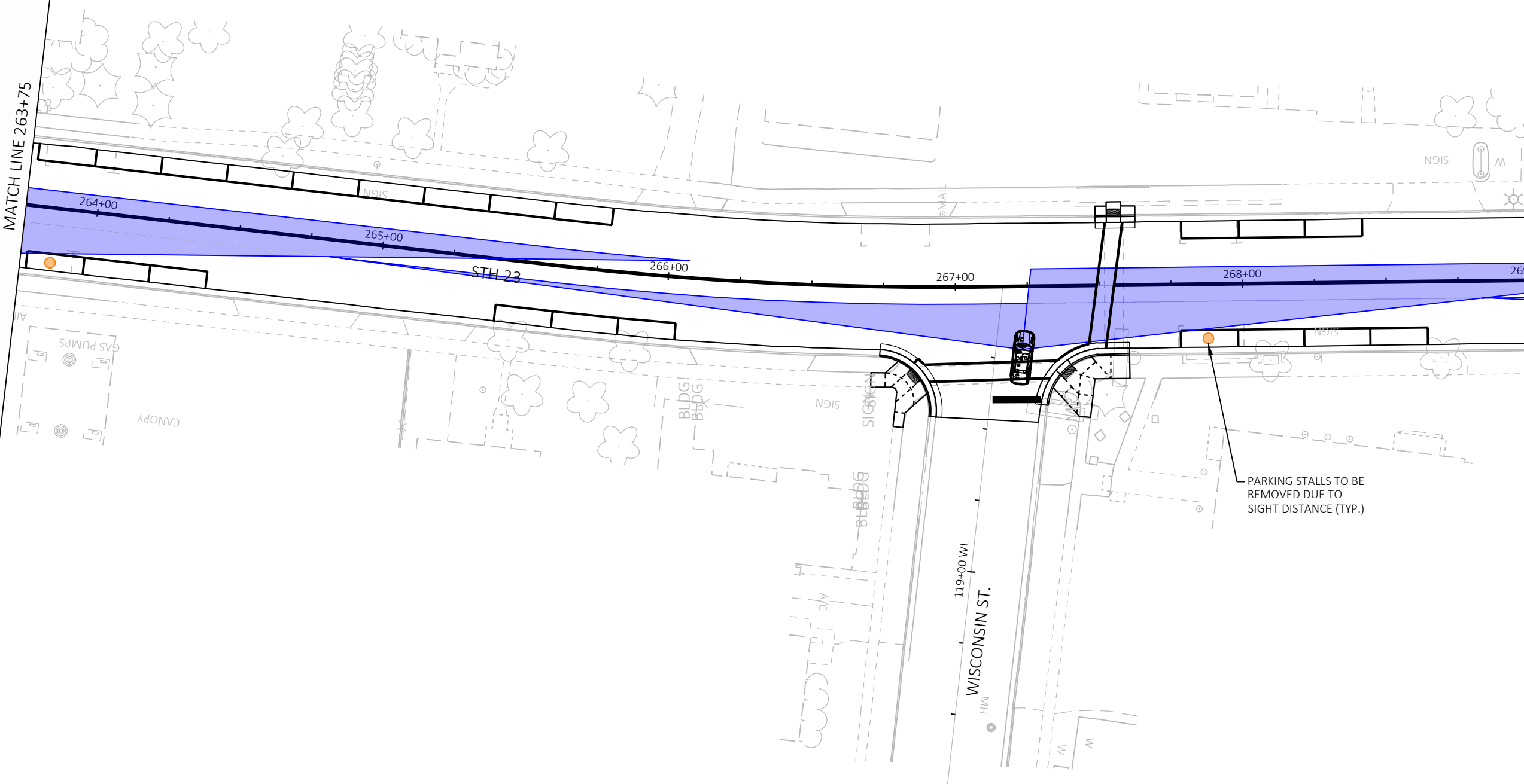


MATCH LINE 263+75

MATCH LINE 269+00

5

5



PROJECT NO: 1430-08-83

HWY: STH 23

COUNTY: GREEN LAKE

PAVEMENT MARKING

SHEET

E

LEGEND

- PARKING STALL LOCATED PARTIALLY IN VISION TRIANGLE (1)



STA 250+34.08  
MATCH EXISTING  
SAW CUT REQ'D

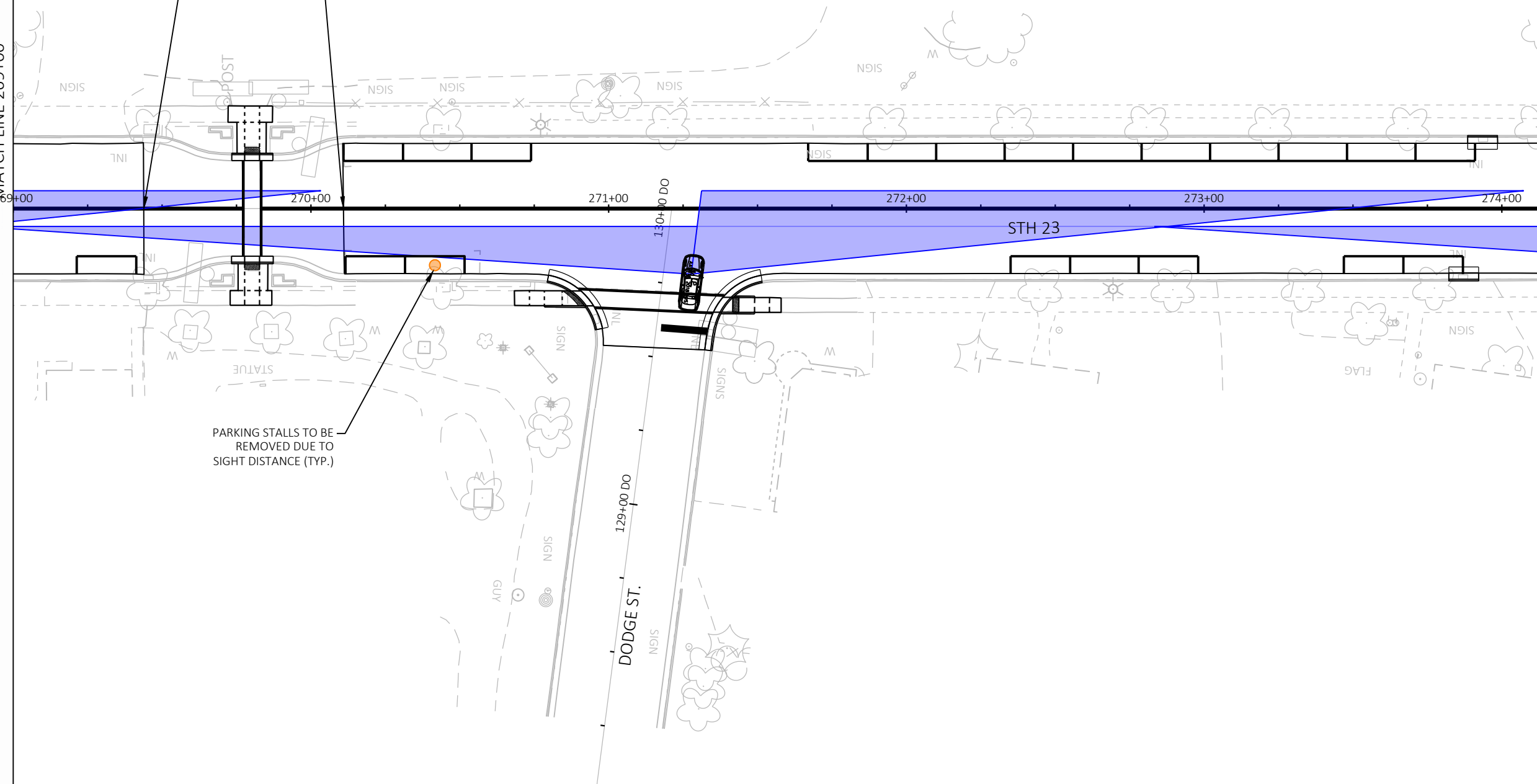
STA 250+34.08  
MATCH EXISTING  
SAW CUT REQ'D

MATCH LINE 269+00

MATCH LINE 274+15

5

5



PARKING STALLS TO BE  
REMOVED DUE TO  
SIGHT DISTANCE (TYP.)

PROJECT NO: 1430-08-83

HWY: STH 23

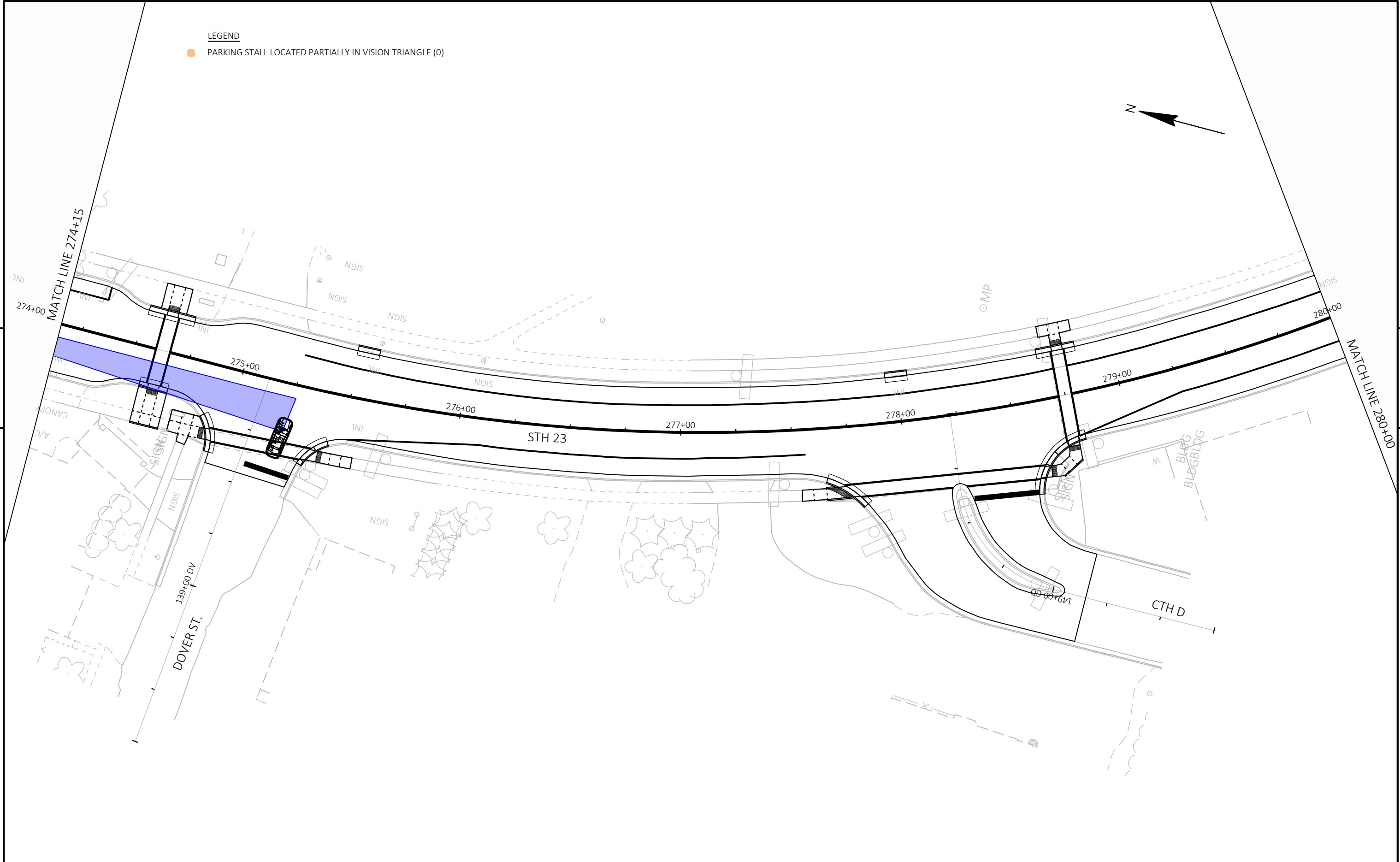
COUNTY: GREEN LAKE

PAVEMENT MARKING

SHEET

E

LEGEND  
 ● PARKING STALL LOCATED PARTIALLY IN VISION TRIANGLE (0)



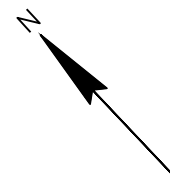
5

5

PROJECT NO: 1430-08-83	HWY: STH 23	COUNTY: GREEN LAKE	PAVEMENT MARKING	SHEET	E
------------------------	-------------	--------------------	------------------	-------	---

LEGEND

● PARKING STALL LOCATED PARTIALLY IN VISION TRIANGLE (0)



MATCH LINE 280+00

280+00

281+00

282+00

283+00

284+00

285+00

STH 23

OLD GREEN LAKE RD

161+00 GL

MP

END CONSTRUCTION  
STA 284+91.90  
MATCH EXISTING  
SAW CUT REQ'D

5

5

PROJECT NO: 1430-08-83

HWY: STH 23

COUNTY: GREEN LAKE

PAVEMENT MARKING

SHEET

E