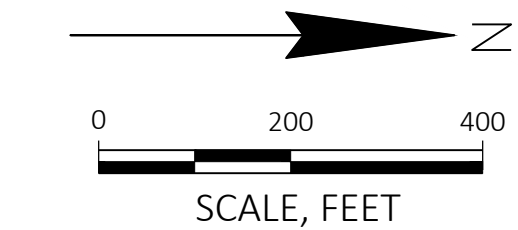
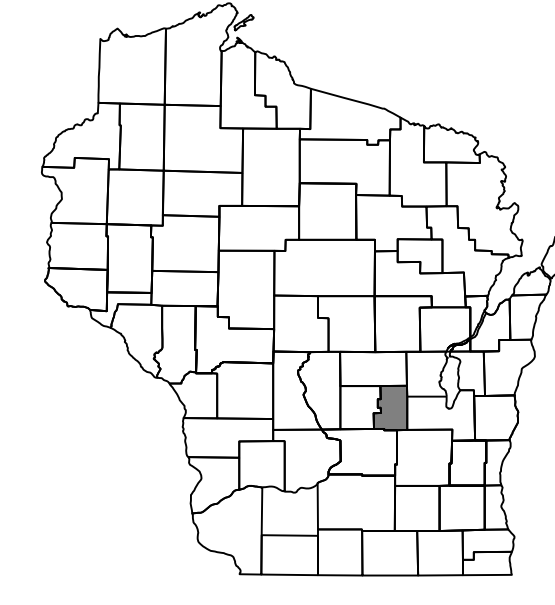


# WIS 73 IMPROVEMENTS

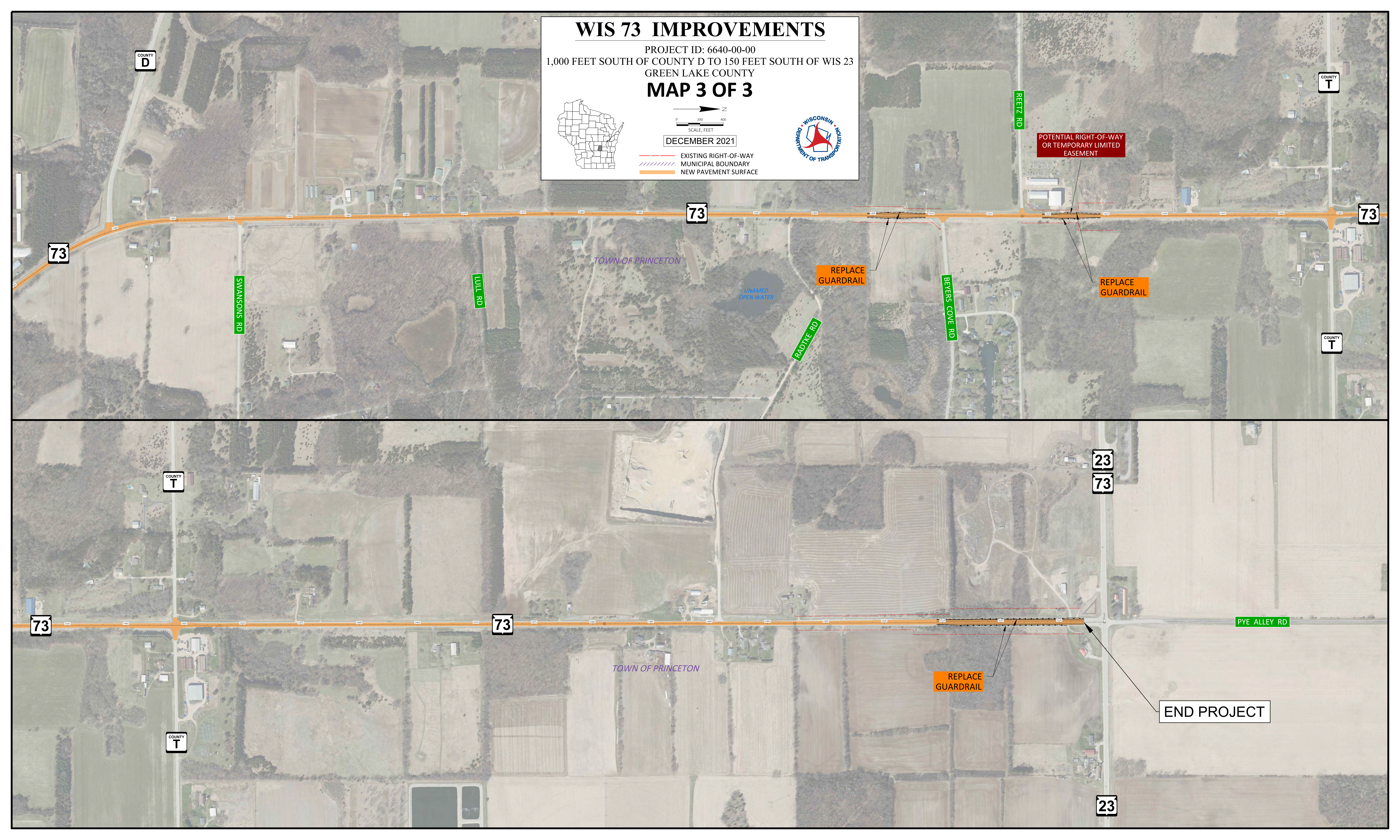
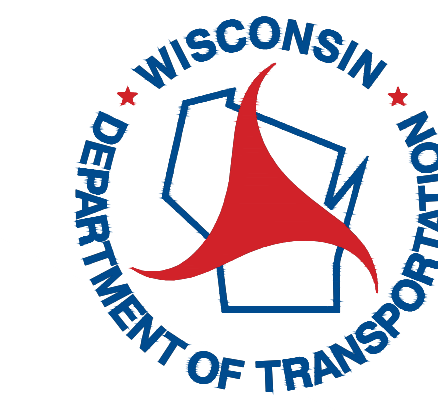
PROJECT ID: 6640-00-00  
1,000 FEET SOUTH OF COUNTY D TO 150 FEET SOUTH OF WIS 23  
GREEN LAKE COUNTY

## MAP 3 OF 3



DECEMBER 2021

- EXISTING RIGHT-OF-WAY
- MUNICIPAL BOUNDARY
- NEW PAVEMENT SURFACE



POTENTIAL RIGHT-OF-WAY OR TEMPORARY LIMITED EASEMENT

REPLACE GUARDRAIL

REPLACE GUARDRAIL

REPLACE GUARDRAIL

END PROJECT