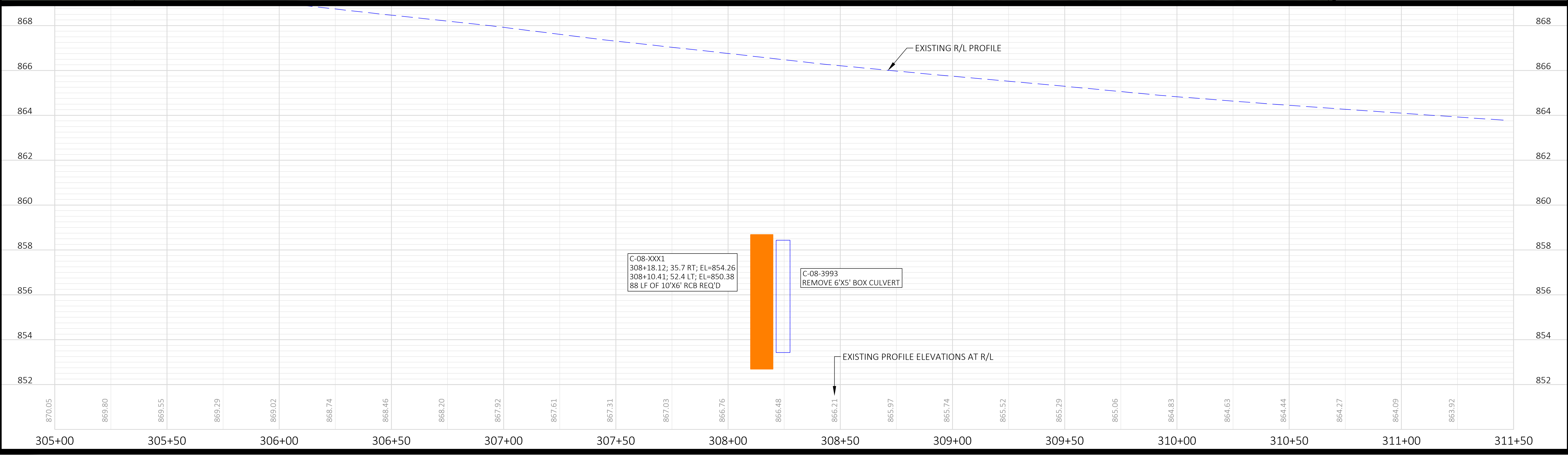
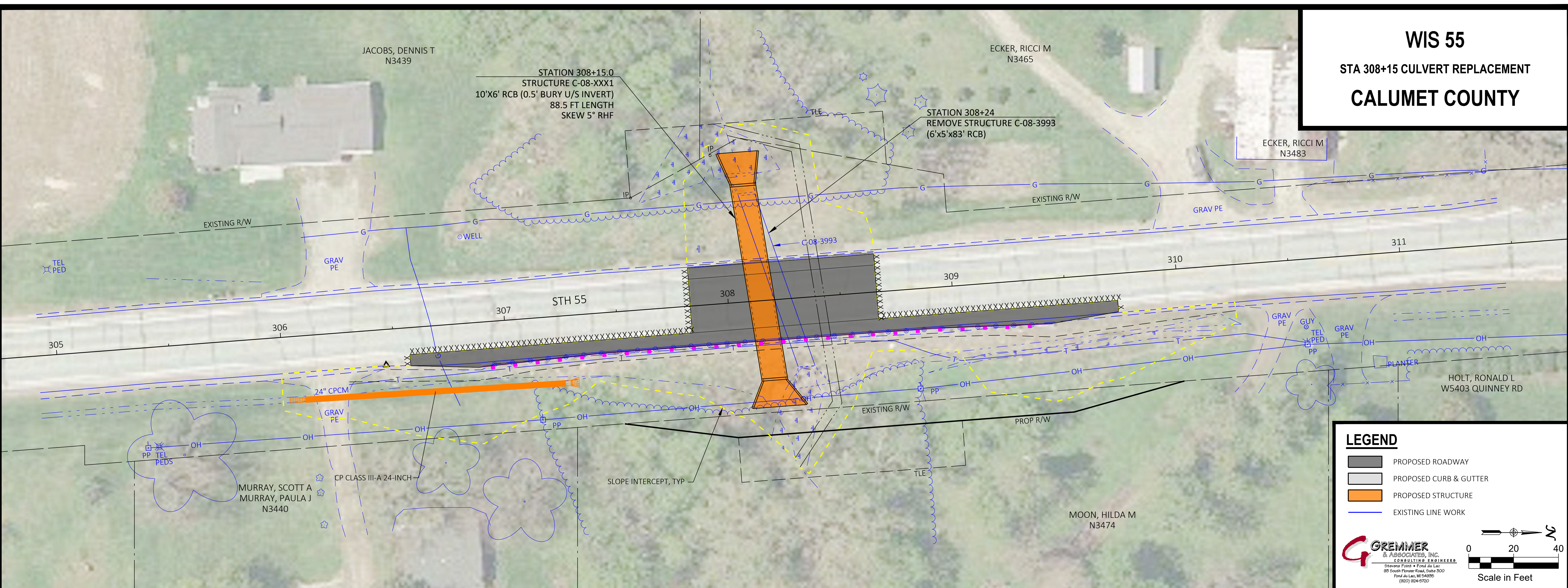
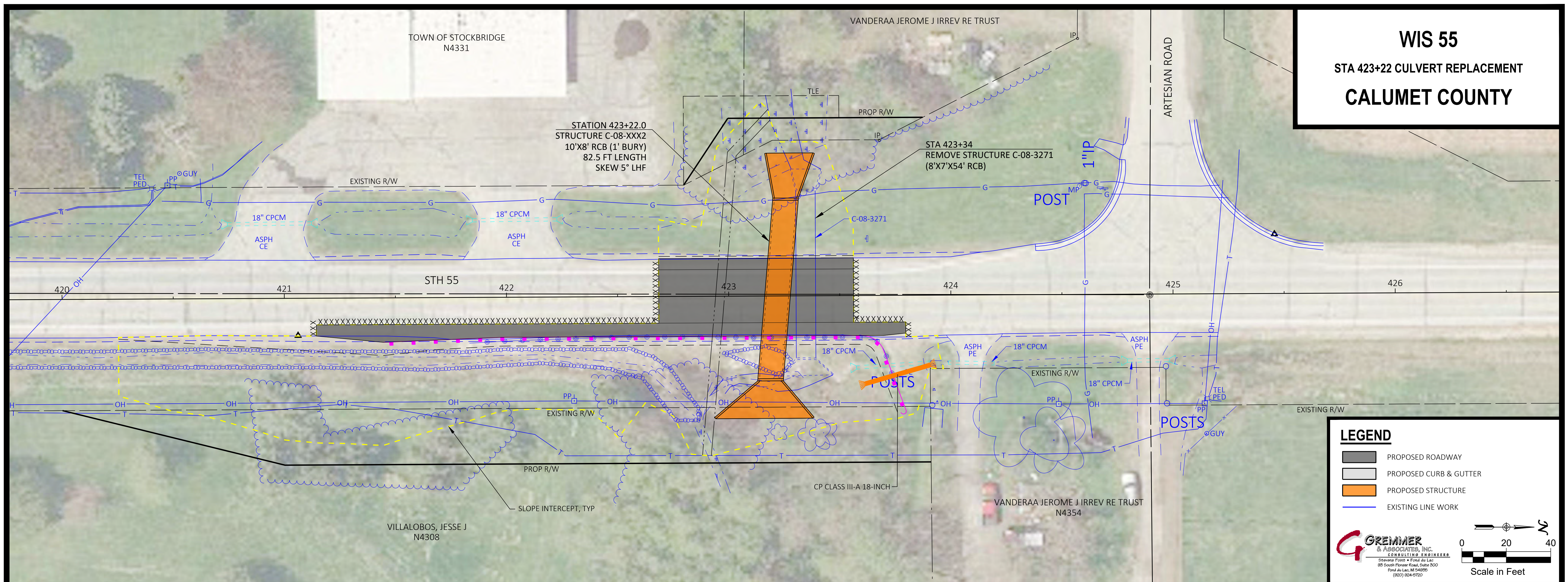


WIS 55
STA 308+15 CULVERT REPLACEMENT
CALUMET COUNTY



WIS 55
STA 423+22 CULVERT REPLACEMENT
CALUMET COUNTY

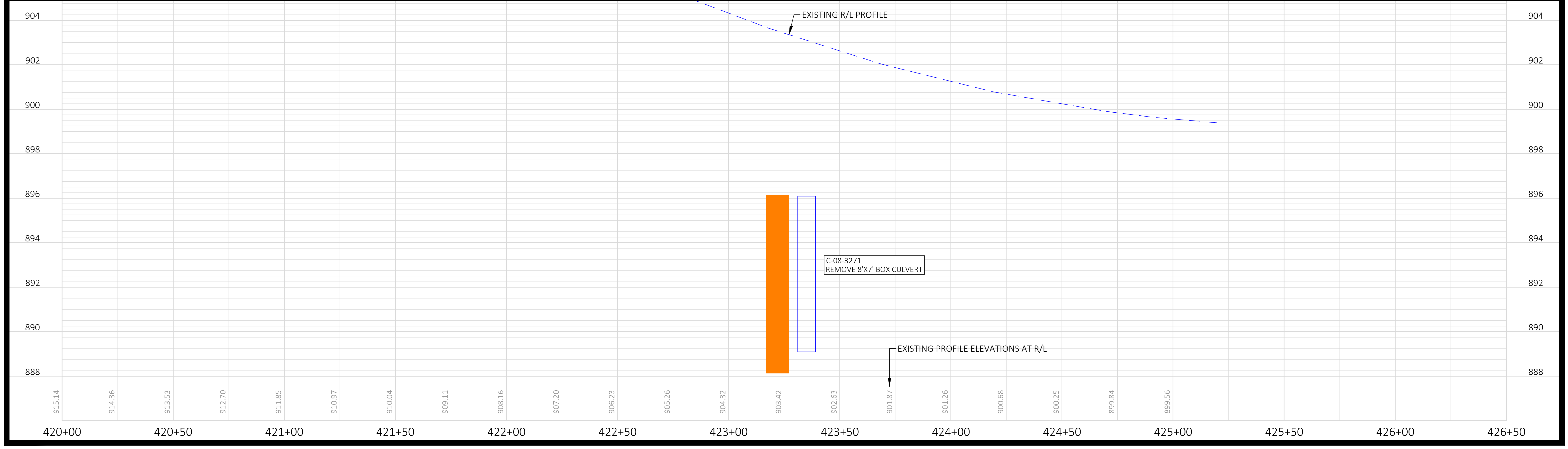


LEGEND

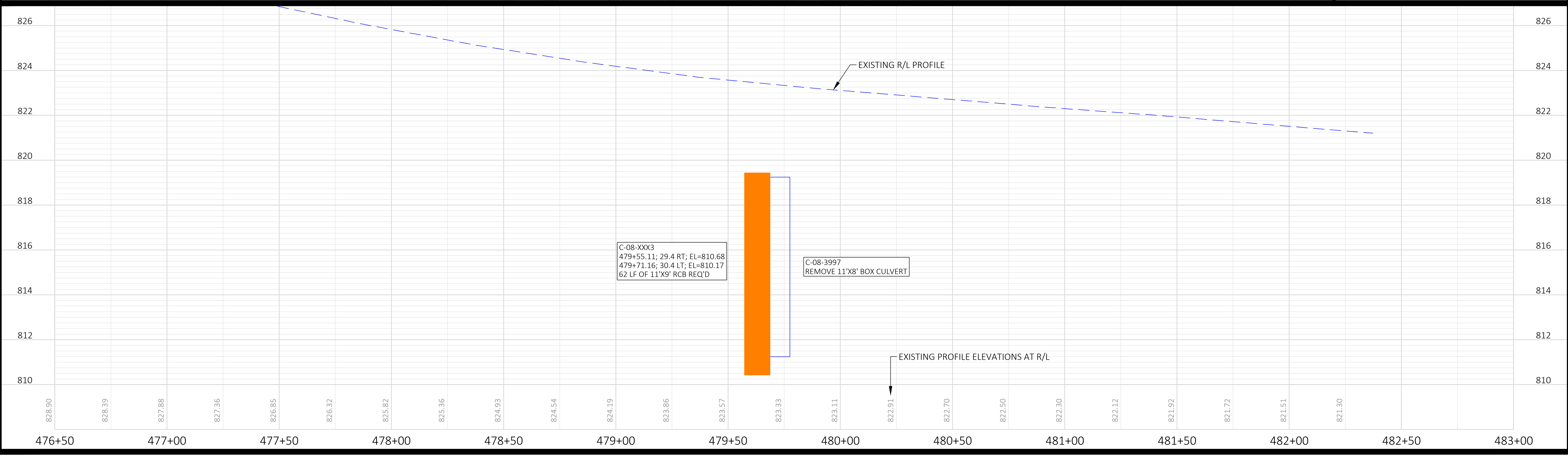
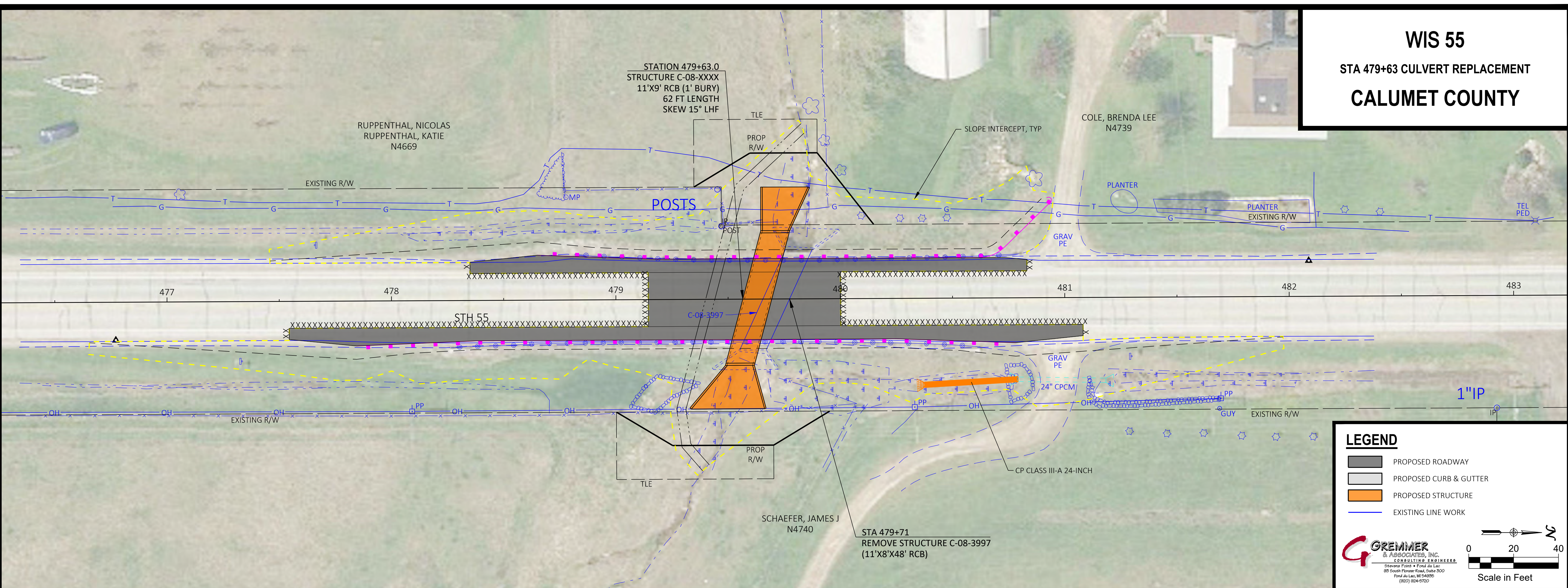
- PROPOSED ROADWAY
- PROPOSED CURB & GUTTER
- PROPOSED STRUCTURE
- EXISTING LINE WORK

GREMMER & ASSOCIATES, INC.
 CONSULTING ENGINEERS
 Steven F. Gremer - P.E. & Lic. 00000000
 88 South Florence Road, Suite 200
 Fond du Lac, WI 54601
 (920) 924-9700

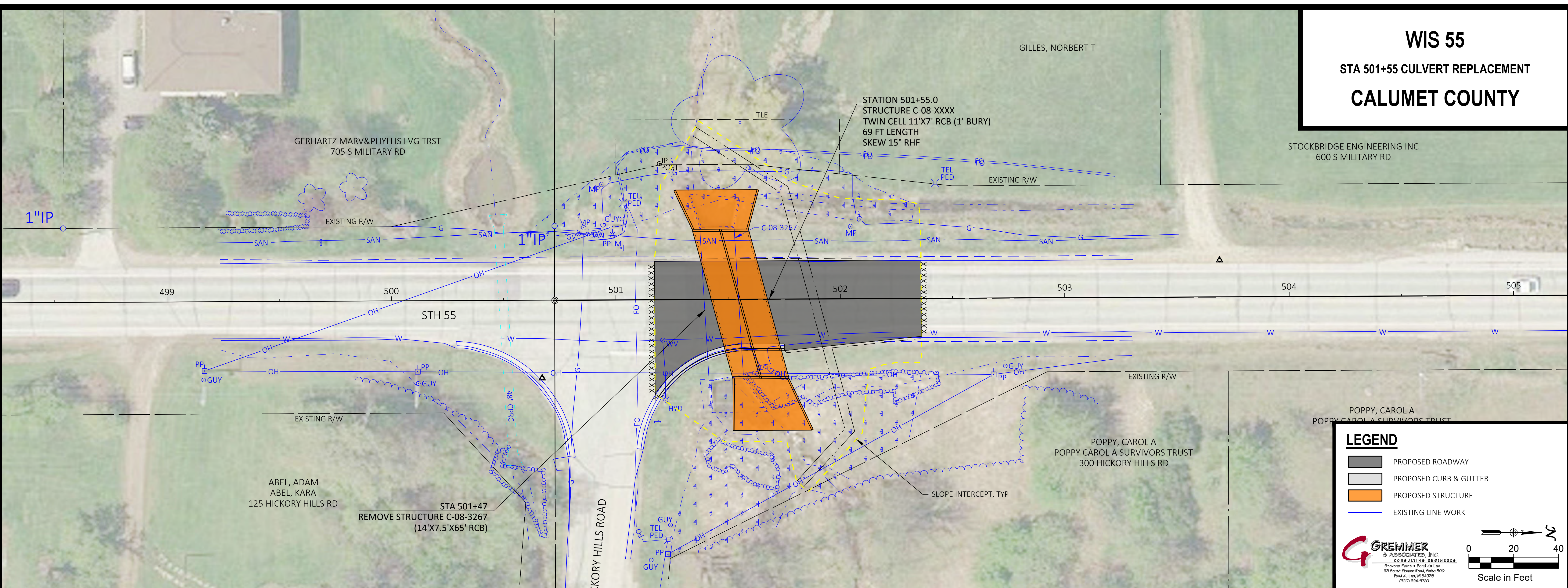
Scale in Feet
 0 20 40



WIS 55
STA 479+63 CULVERT REPLACEMENT
CALUMET COUNTY



WIS 55
STA 501+55 CULVERT REPLACEMENT
CALUMET COUNTY

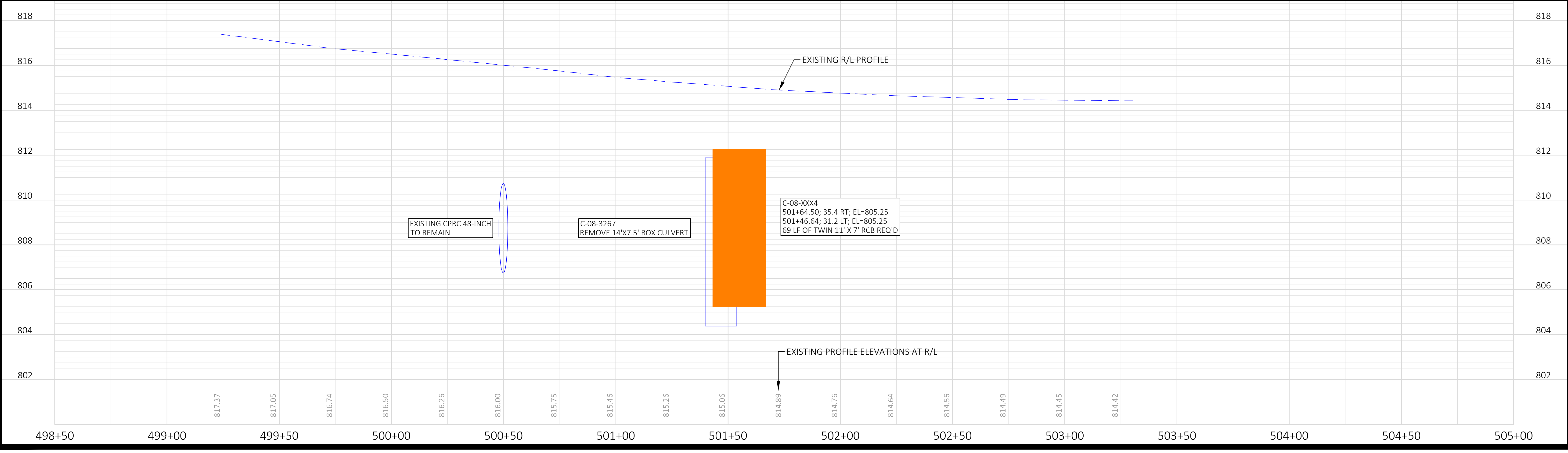


LEGEND

- PROPOSED ROADWAY
- PROPOSED CURB & GUTTER
- PROPOSED STRUCTURE
- EXISTING LINE WORK

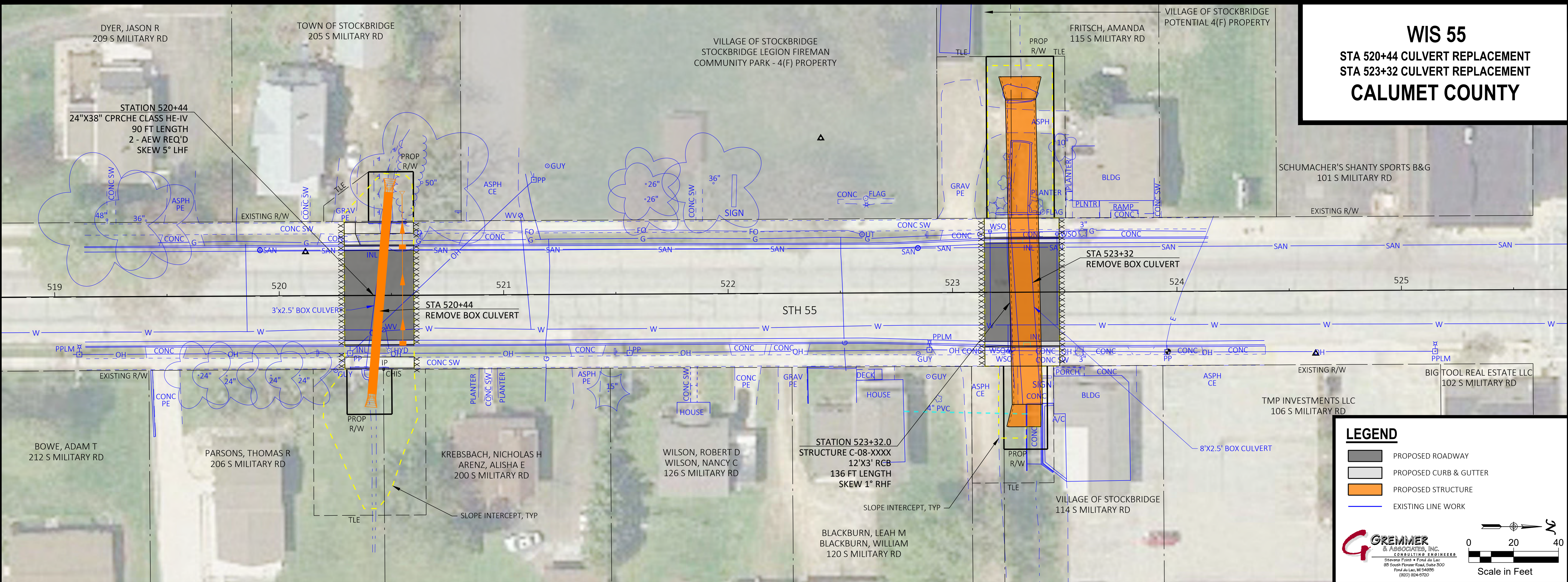
GREMMER & ASSOCIATES, INC.
 CONSULTING ENGINEERS
 Steven F. Gremer - Fond du Lac
 85 South Florence Road, Suite 200
 Fond du Lac, WI 54601
 (920) 924-9700

Scale in Feet
 0 20 40



WIS 55

STA 520+44 CULVERT REPLACEMENT STA 523+32 CULVERT REPLACEMENT CALUMET COUNTY

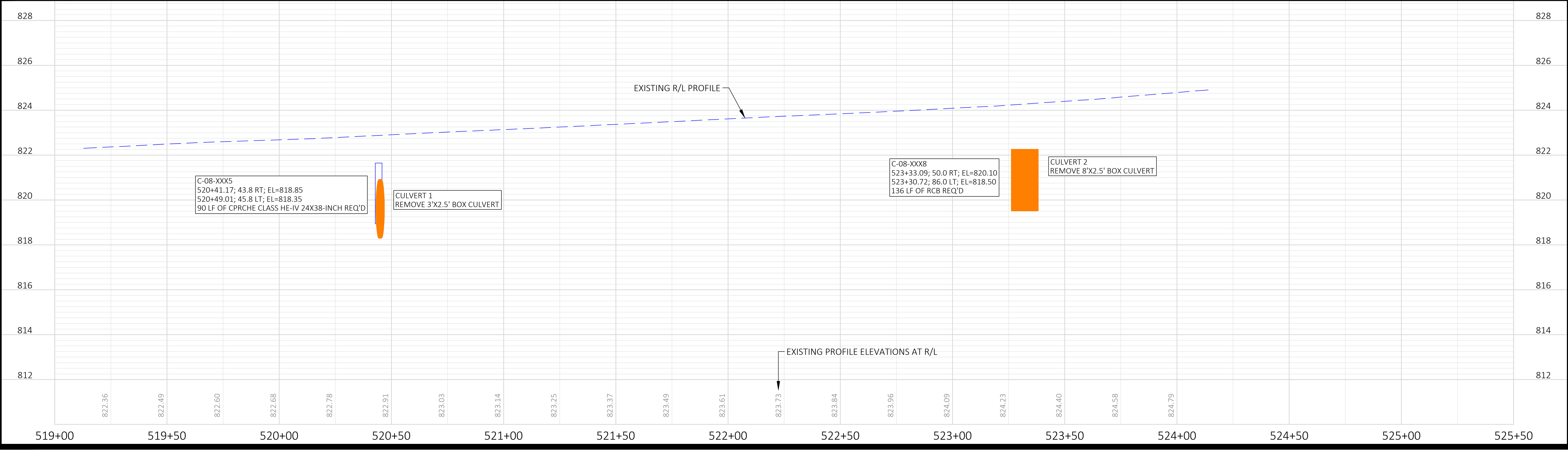


LEGEND

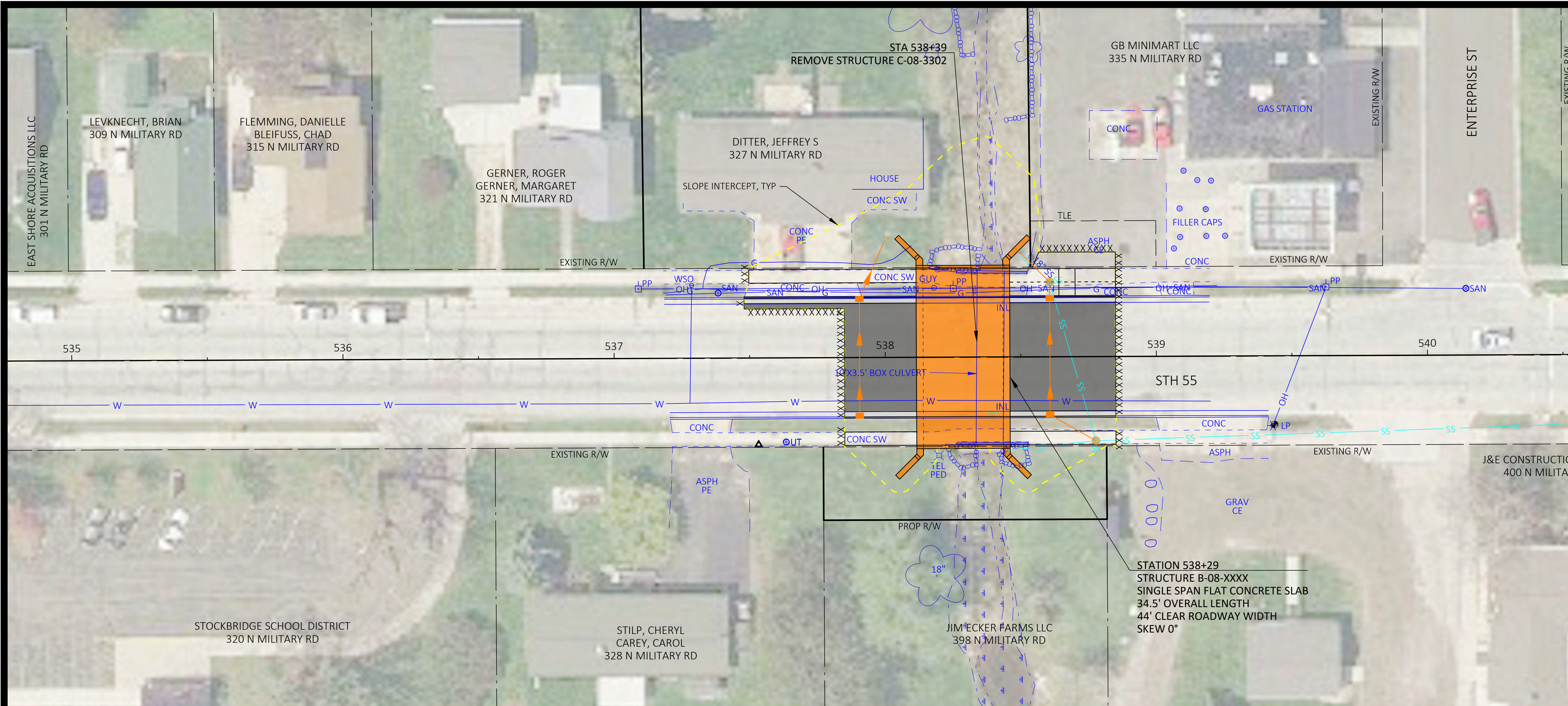
- PROPOSED ROADWAY
- PROPOSED CURB & GUTTER
- PROPOSED STRUCTURE
- EXISTING LINE WORK

GREMMER & ASSOCIATES, INC.
CONSULTING ENGINEERS
88 South Platte Road, Suite 200
Fond du Lac, WI 54936
(920) 924-9700

Scale in Feet
0 20 40



WIS 55
STA 538+29 STRUCTURE REPLACEMENT
CALUMET COUNTY

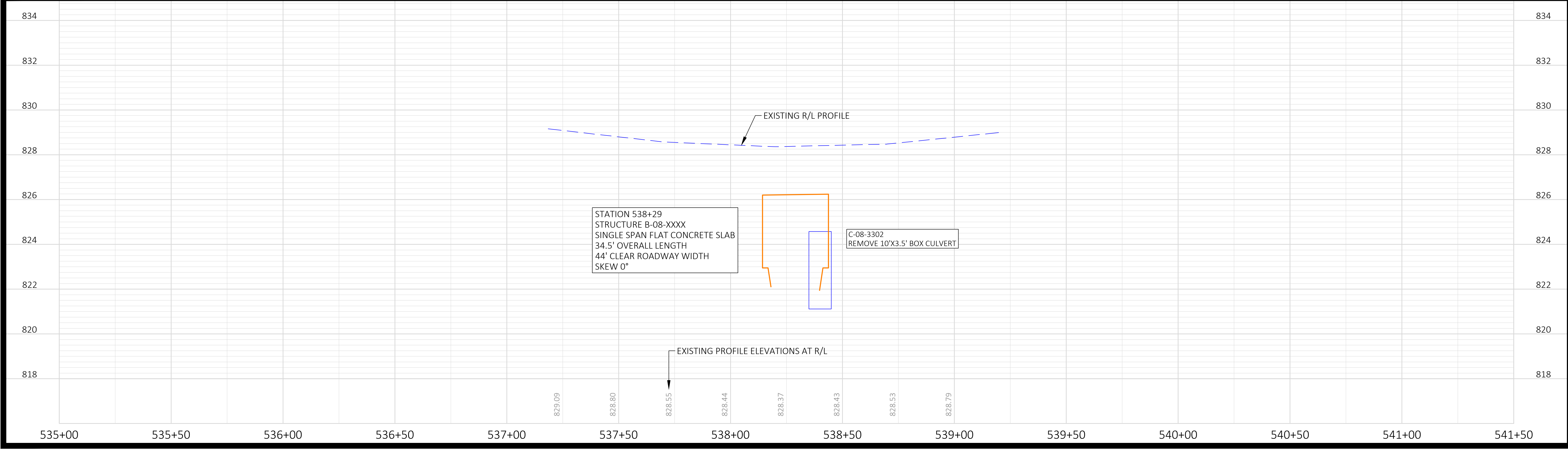


LEGEND

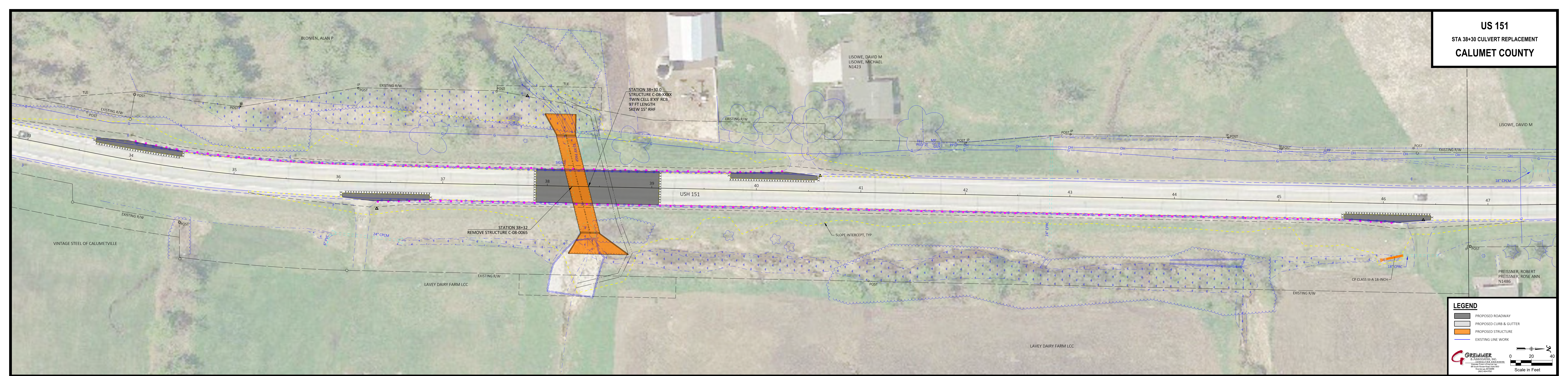
- PROPOSED ROADWAY
- PROPOSED CURB & GUTTER
- PROPOSED STRUCTURE
- EXISTING LINE WORK

GREMMER & ASSOCIATES, INC.
 CONSULTING ENGINEERS
 Steven F. Gremer, P.E., F.A.S.T.E.
 85 South Florence Road, Suite 200
 Fond du Lac, WI 54601
 (920) 924-9700

Scale in Feet
 0 20 40



US 151
STA 38+30 CULVERT REPLACEMENT
CALUMET COUNTY



LEGEND

- PROPOSED ROADWAY
- PROPOSED CURB & GUTTER
- PROPOSED STRUCTURE
- EXISTING LINE WORK

GREMMER
 ENGINEERS, INC.
 1000 W. STATE ST. SUITE 200
 CALUMET, IL 61821
 (618) 241-1111
 www.gremmer.com

Scale in Feet: 0, 20, 40

