



WIS 21 Corridor Preservation Plan

Rivermoor Road to US 41

May 2013

Contact information:

WisDOT Northeast Region

944 Vanderperren Way
Green Bay, WI 54304
Phone: (920) 492-5643
Fax: (920) 492-5640

WisDOT Web site:

www.wisconsin.gov

Project Web site:

www.wisconsin.gov/projects/neregion/21

Bryan Lipke, P.E.

WisDOT Project Manager
Phone: (920) 492-5703
bryan.lipke@dot.wi.gov

Kim A. Rudat

WisDOT Communications Manager
Phone: (920) 492-5743
kim.rudat@dot.wi.gov

Mission statement:

To provide leadership in the development and operation of a safe and efficient transportation system.

Included in this issue

Page 1:

Selected Alternative

Pages 2-3:

Expressway and Inter section Alternatives

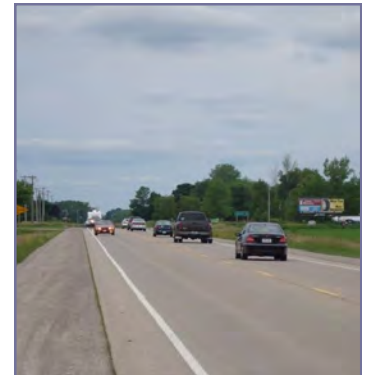
Page 4:

*What is an Official Map?
Public Meeting Invitation*

Future Expressway Alternative Selected for the WIS 21 Corridor



WIS 21 Corridor Study limits: Rivermoor Road to US 41



Two-way traffic on WIS 21

The Wisconsin Department of Transportation (WisDOT) has been working with local stakeholders to develop a long range plan for the future of the WIS 21 corridor between Omro and Oshkosh in Winnebago County. The plan will preserve corridor functionality and safety in response to changing traffic conditions and planned development in this important transportation corridor. No construction is scheduled.

At a 2010 public meeting, WisDOT presented conceptual freeway and expressway alternatives for the corridor. Residents and business people expressed a preference for an expressway alternative, which will provide more local access, whereas a freeway would require full access control. Furthermore, they were very interested in improving non-motorized travel in and across the corridor. In response, WisDOT will map an expressway that will generally follow the existing alignment of WIS 21.

The WIS 21 Corridor Preservation Plan will designate the location of a divided roadway to be constructed when traffic volumes or safety concerns warrant. Until that time, the advance planning will allow local communities to make informed decisions while pursuing development. WisDOT will also identify phased improvements to meet state, regional and local transportation objectives — in particular, the department is developing conceptual designs for corridor intersection improvements in the segments that currently have four lanes.

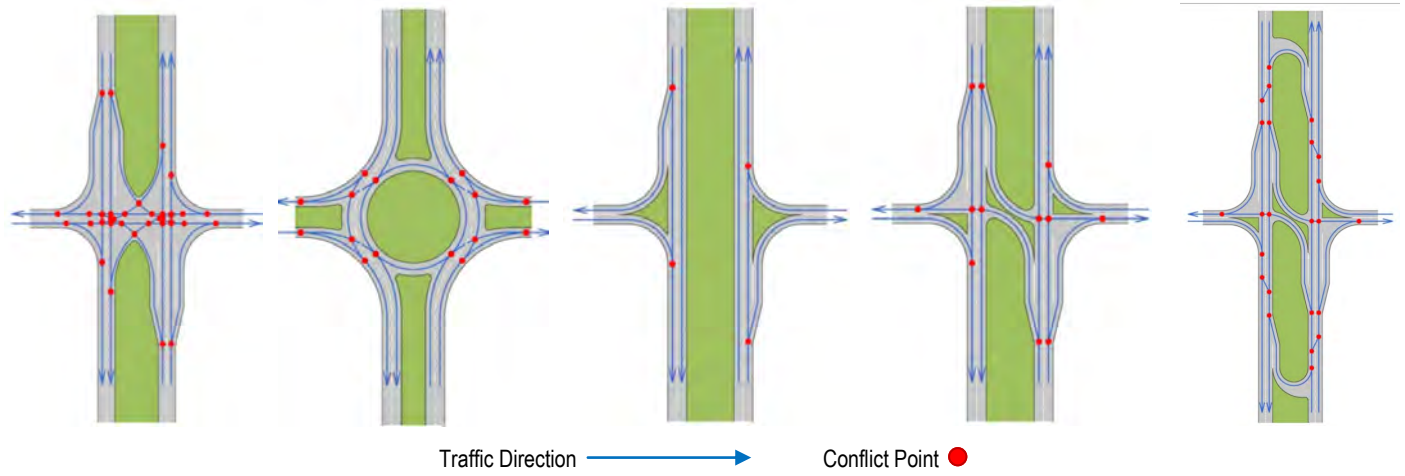
A public information meeting is scheduled to present alternatives under consideration, to outline the official mapping process and to gather opinions from corridor residents and travelers. The meeting will be held on **Tuesday, May 21, 2013 from 5:30 p.m. to 7 p.m. at Oakwood Elementary School, 1225 North Oakwood Road, Oshkosh.** See page 4 for more information.

WIS 21 Intersection Alternatives

WIS 21 provides high-speed long distance travel in the central part of the state. As a key route in Winnebago County, the highway also provides access to local roads serving numerous residences, businesses and institutions in Oshkosh and the towns of Algoma and Omro. To maintain safe access, the WIS 21 Corridor Preservation Plan will evaluate a range of intersection improvements for their applicability at corridor intersections. For the major intersections of Westhaven Drive, Oakwood Road, and

Leonard Point Road, a roundabout or signalized intersection will be considered. Analysis for the remaining intersections will include full access, right-in/right-out, right-in/right-out with left-in, and J-turn intersections. These potential treatments will be evaluated when the corridor is funded for reconstruction with capacity expansion in the future or sooner if congestion worsens or safety problems arise. A discussion of these alternatives is found in the table below.

Conceptual Overview of Intersection Types



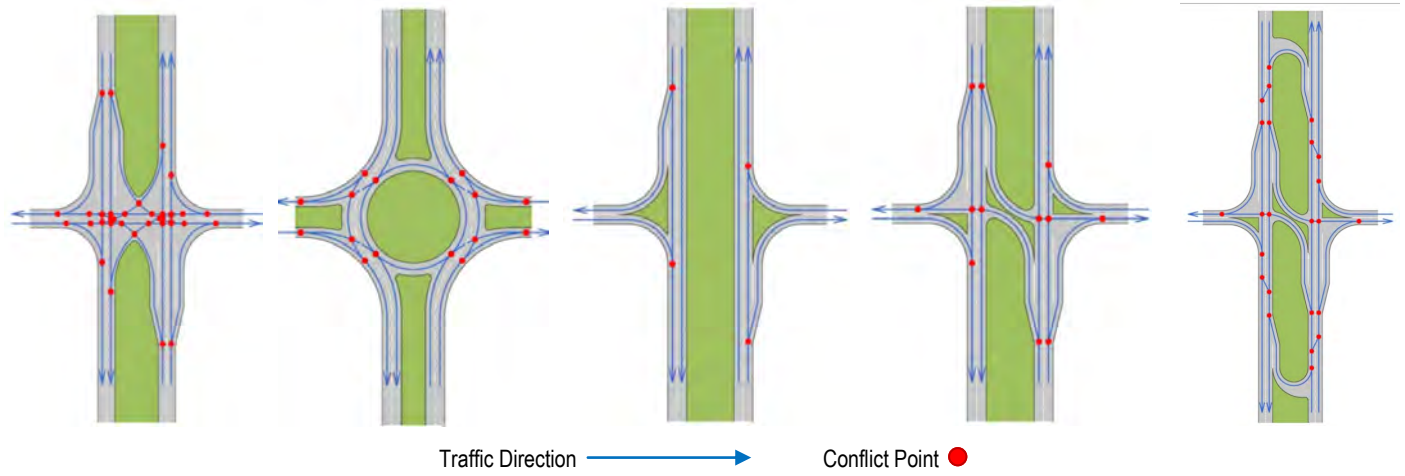
| | Full Access Intersection | Roundabout | Right-In, Right Out (RIRO) | Right In, Right Out with Left In | J-Turn |
|-----------------|---------------------------------------------|-------------------------------------------------------------------------------------------------------------------------------|-----------------------------------------------------------------------------------------------------|----------------------------------------------------------------------------------------------------|-----------------------------------------------------------------------------------------------------|
| Description | All turns and through movements are allowed | One-way circular intersection. Actual roundabout design varies with location. | Removes all left turns by closing the median | Similar to Right-In, Right Out, but allows left turns from main road to side road | Similar to RIRO with Left In, but instead of eliminating Left Out, traffic uses U-turn to turn left |
| Advantage | Familiar to most roadway users | Low entry speeds, no 90° conflict points (crashes), and maintains full access. Appropriate for high traffic volume locations. | Eliminates all conflict points due to left turns and gives traffic along the main road the priority | Eliminates most dangerous left turn conflict points, but does not fully restrict side road traffic | Eliminates all major conflict points while providing all movements and maintains full access |
| Conflict Points | 40 | 16 | 4 | 12 | 16 |

WIS 21 Intersection Alternatives

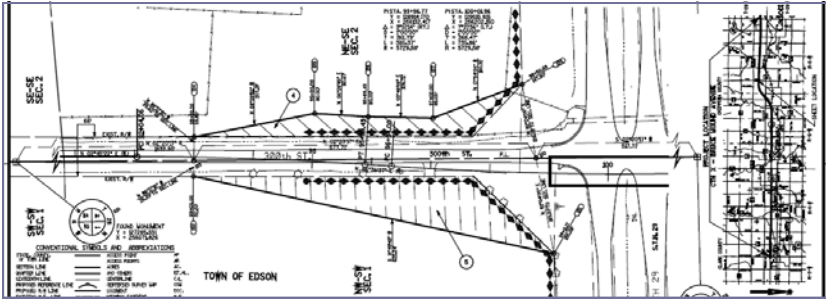
WIS 21 provides high-speed long distance travel in the central part of the state. As a key route in Winnebago County, the highway also provides access to local roads serving numerous residences, businesses and institutions in Oshkosh and the towns of Algoma and Omro. To maintain safe access, the WIS 21 Corridor Preservation Plan will evaluate a range of intersection improvements for their applicability at corridor intersections. For the major intersections of Westhaven Drive, Oakwood Road, and

Leonard Point Road, a roundabout or signalized intersection will be considered. Analysis for the remaining intersections will include full access, right-in/right-out, right-in/right-out with left-in, and J-turn intersections. These potential treatments will be evaluated when the corridor is funded for reconstruction with capacity expansion in the future or sooner if congestion worsens or safety problems arise. A discussion of these alternatives is found in the table below.

Conceptual Overview of Intersection Types



| | Full Access Intersection | Roundabout | Right-In, Right Out (RIRO) | Right In, Right Out with Left In | J-Turn |
|-----------------|---------------------------------------------|-------------------------------------------------------------------------------------------------------------------------------|-----------------------------------------------------------------------------------------------------|----------------------------------------------------------------------------------------------------|-----------------------------------------------------------------------------------------------------|
| Description | All turns and through movements are allowed | One-way circular intersection. Actual roundabout design varies with location. | Removes all left turns by closing the median | Similar to Right-In, Right Out, but allows left turns from main road to side road | Similar to RIRO with Left In, but instead of eliminating Left Out, traffic uses U-turn to turn left |
| Advantage | Familiar to most roadway users | Low entry speeds, no 90° conflict points (crashes), and maintains full access. Appropriate for high traffic volume locations. | Eliminates all conflict points due to left turns and gives traffic along the main road the priority | Eliminates most dangerous left turn conflict points, but does not fully restrict side road traffic | Eliminates all major conflict points while providing all movements and maintains full access |
| Conflict Points | 40 | 16 | 4 | 12 | 16 |



What is an Official Map?

The WIS 21 Corridor Preservation Plan will not lead to immediate construction in the corridor. Rather, it will lay the groundwork for the highway's long-term future. The conceptual alternative and environmental assessment (EA) phase identifies a range of alternatives that can be evaluated for social, cultural, and environmental impacts. Using input from the public, a Preferred Alternative will be identified at the conclusion of the EA.

Under Wisconsin Statute 84.925, WisDOT can use an Official Map to designate property needed to convert a state highway to an expressway in the future. Official mapping provides WisDOT the ability to proactively work with land owners in advance of an approved construction project. Official mapping also informs and helps land owners, the public and local communities plan so that their improvements don't conflict with future expressway conversion.

Public Information Meeting

May 21, 2013

You are invited to a public information meeting for the WIS 21 Corridor Preservation study. The meeting will be held in an open house format with a short presentation. Exhibits and project information will be available for review and comment.

Please attend: your input is very valuable in determining the future of the corridor.

When: Tuesday, May 21, 2013
5:30 p.m. to 7 p.m.
Presentation at 5:45 p.m.

Where: Oakwood Elementary School
1225 North Oakwood Road,
Oshkosh, WI 54904

Project Web site: www.dot.wisconsin.gov/projects/d3/wis21plan

944 Vanderperren Way
Green Bay, WI 54304
Phone: (920) 492-5643
Fax: (920) 492-5640
Email: ner.dtsd@dot.wi.gov

