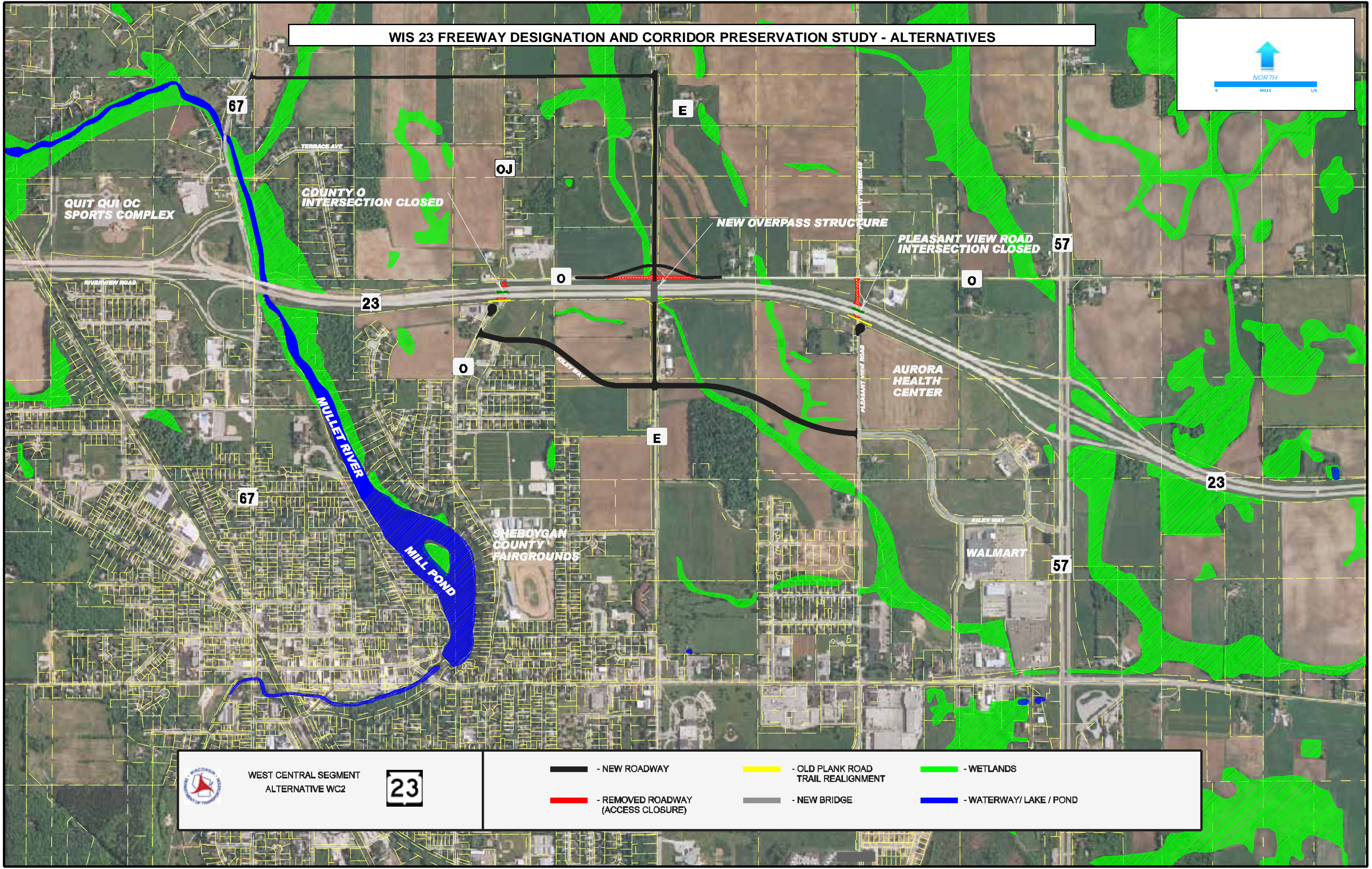
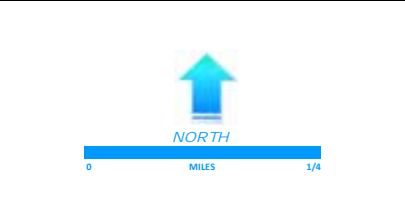


WIS 23 FREEWAY DESIGNATION AND CORRIDOR PRESERVATION STUDY - ALTERNATIVES



QUIT QUI OC SPORTS COMPLEX

COUNTY O INTERSECTION CLOSED

NEW OVERPASS STRUCTURE

PLEASANT VIEW ROAD INTERSECTION CLOSED

MULET RIVER
MILL POND

AURORA HEALTH CENTER

SHEBOYGAN COUNTY FAIRGROUNDS

WALMART

WEST CENTRAL SEGMENT
ALTERNATIVE WC2

- NEW ROADWAY
- OLD PLANK ROAD TRAIL REALIGNMENT
- REMOVED ROADWAY (ACCESS CLOSURE)
- NEW BRIDGE
- WETLANDS
- WATERWAY/ LAKE / POND