



# WIS 23 Freeway Designation and Corridor Preservation Plan

Public Information Meeting #3

March 10, 2011

County P to WIS 32

Sheboygan County

WisDOT Project ID 1440-19-00



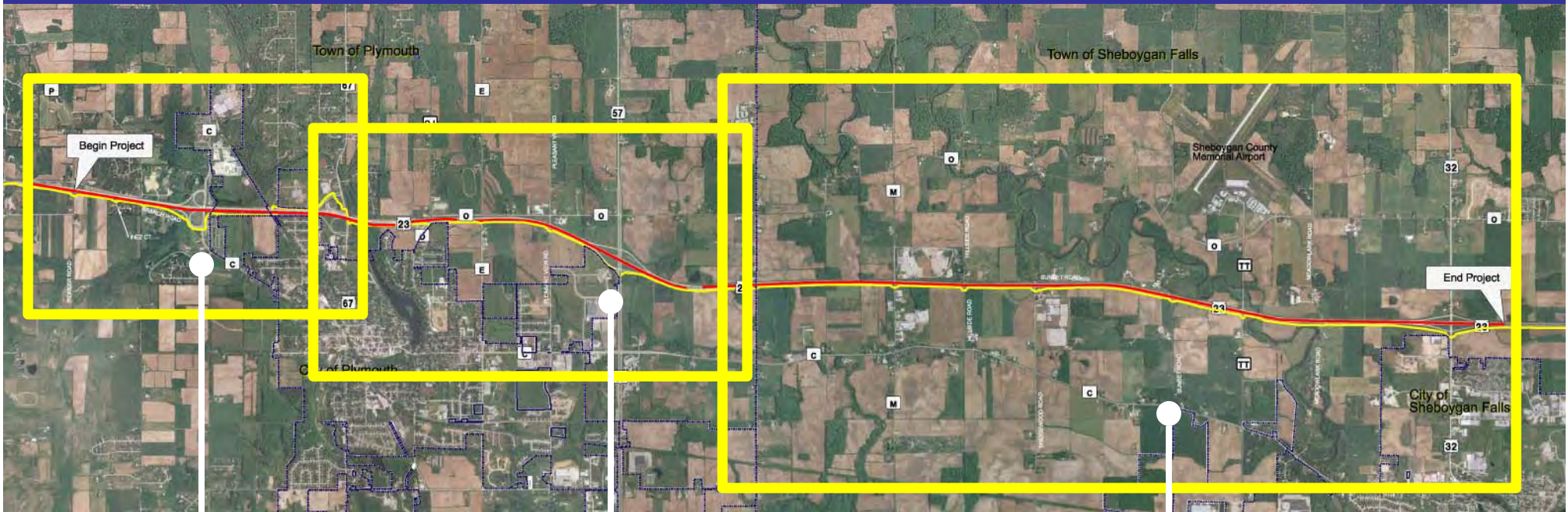
# Study Team Introduction



- Rob Wagner, P.E. – WisDOT Project Manager
- Jill Michaelson – WisDOT Supervisor
- Matt Halada – WisDOT Transportation Planner
- Joshua Mount – Consultant Project Manager



# Project Overview



Western Segment

West-Central Segment

Eastern Segment



# West Segment

## County P to WIS 67



- Discussion of comments from PIM
- Review of alternative selected for Environmental Assessment



# West Segment

## Discussion of Comments from PIM



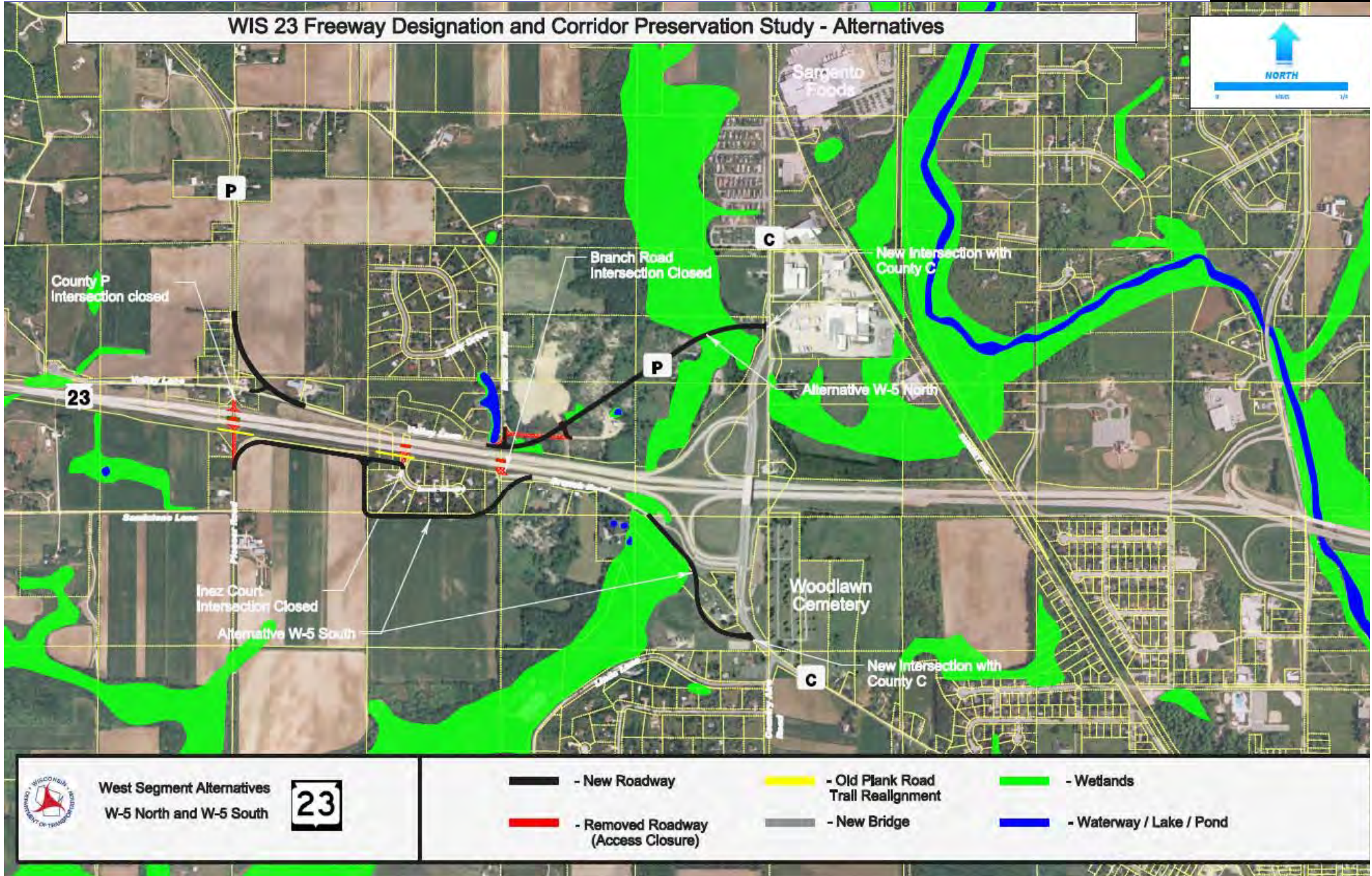
- Generally positive feedback on all West Segment alternatives
- Support for W-2 South and W-4 North
- Concern about closure of County P Intersection
- Concern with severance of agricultural land





# West Segment

## Review – Alternative W-5

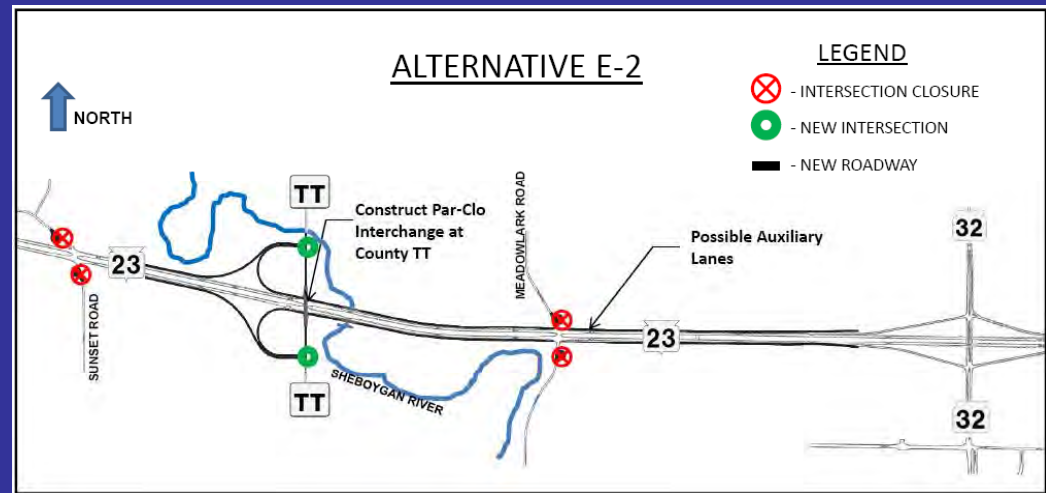


# East Segment

## WIS 57 to WIS 32



- Discussion of comments from PIM #2
- Review of alternative selected for Environmental Assessment





# East Segment

## Discussion of Comments from PIM



- Highland Road Interchange (Alternative E-1)
  - Concern about airport accessibility
  - Concern about agricultural impacts
- County TT Interchange (Alternative E-2)
  - Support from area business and local governments
  - Support from area residents
  - Preferred alternative for emergency vehicles access





# East Segment

## Discussion of Comments from PIM #2



- Bridgewood Road Interchange (Alternative E-3)
  - Some opposition based on the need or benefit of the alternative
  - Not compatible with the rate of the town's growth
- Willow Road and County M Overpass (All alternatives)
  - Farm land owners are in favor of alternative due to safety and accessibility

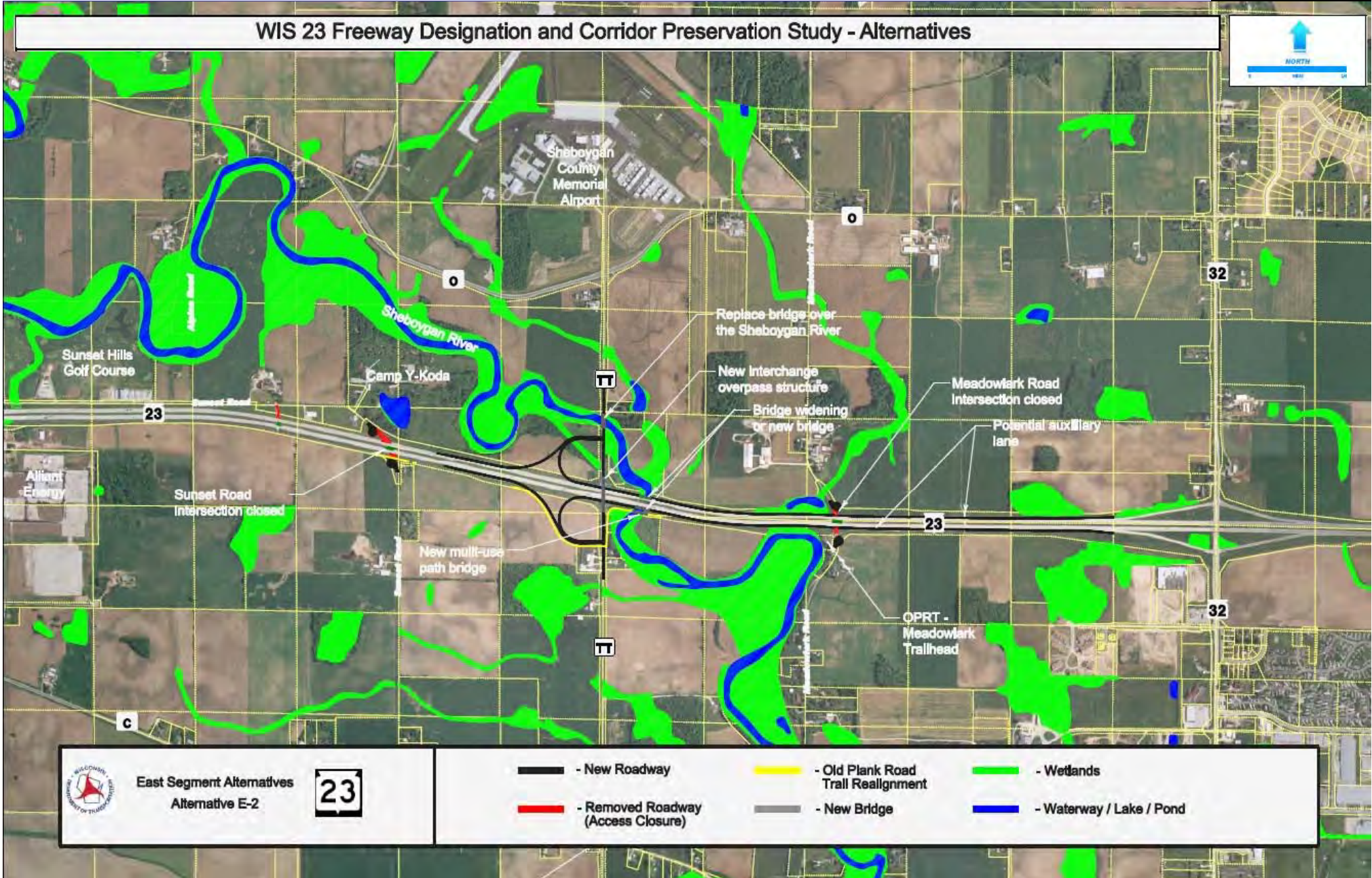




# East Segment







## Review Alternative – E2 County TT Interchange



WIS 23 Freeway Designation and Corridor Preservation Study - Alternatives




**East Segment Alternatives**  
**Alternative E-2**


-  - New Roadway
-  - Old Plank Road Trail Realignment
-  - Wetlands
-  - Removed Roadway (Access Closure)
-  - New Bridge
-  - Waterway / Lake / Pond

# Central Segment



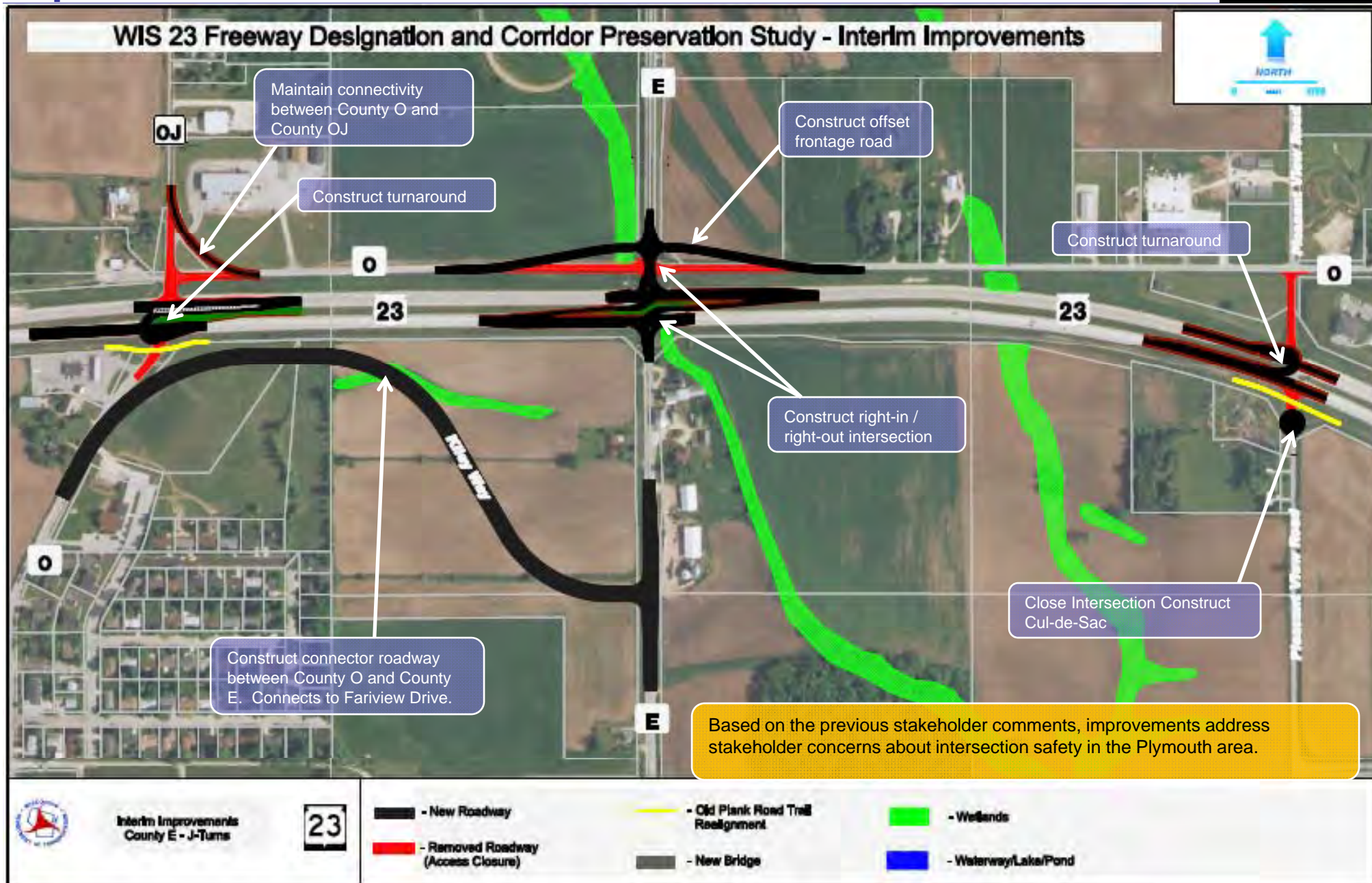
- Update on the HSIP projects (J-turns)
  - County E J-Turn
  - County M J-Turn
- Discussion of comments from PIM
- Discuss revision of alternatives
- Confirm alternatives for PIM





# Central Segment

## Updated J-turns





# Central Segment

## Discussion of comments from PIM #2

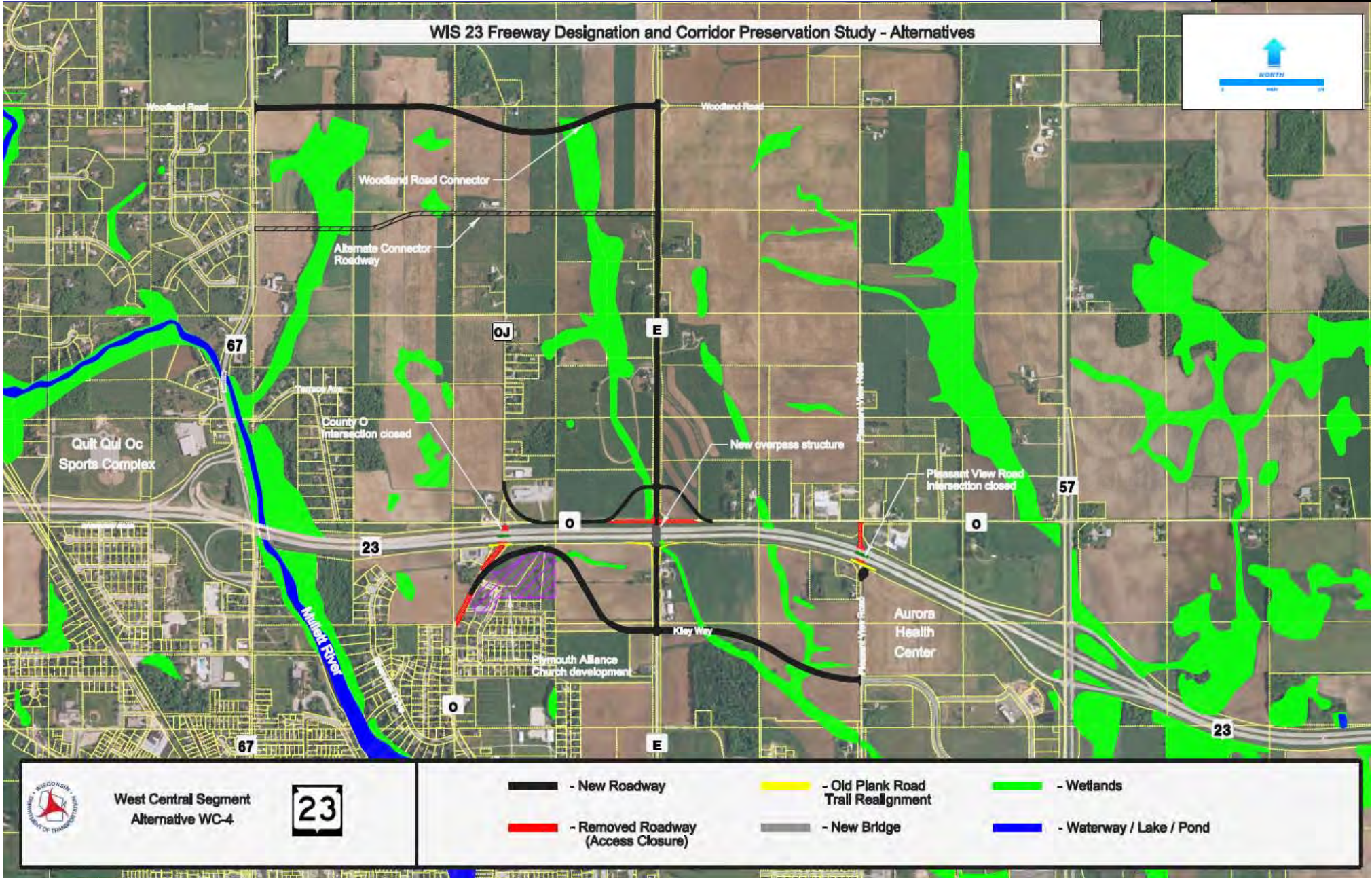


- Significant opposition to Alternative WC-1
- Most opposition from the Riverview Drive neighborhood
- Additional concerns about impacts WC-1 will have on:
  - Cemetery
  - Proximity to school
  - Environmental and wetlands
- Mixed reaction for alternative WC-2



# Central Segment

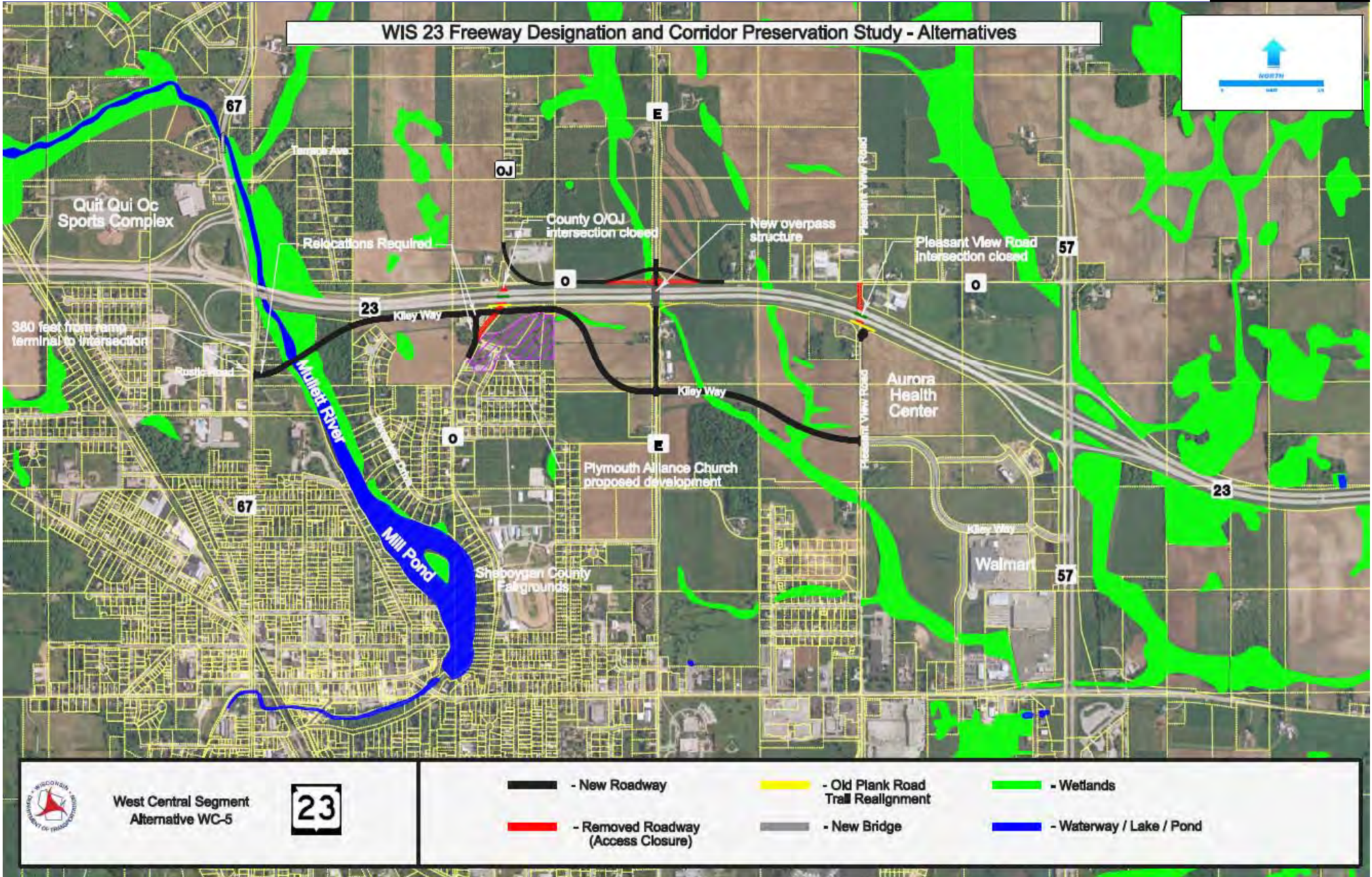
## Revision of Alternatives – Alternative WC-4





# Central Segment

## Revision of Alternatives – Alternative WC-5



West Central Segment  
Alternative WC-5



# What's Next?



- Stakeholder meeting #6
- Central segment alternative selection
- Preliminary engineering
- Environmental analysis
- Mapping of right of way





# Project Contacts / Information



- Rob Wagner – WisDOT Project Manager  
Phone – (920) 492-5983  
Email – Robert.wagner@dot.wi.gov
- Project information website

<http://www.dot.wisconsin.gov/projects/ne.htm>

Go to the WIS 23 Corridor Preservation Study button.



# Preliminary Project Impacts/Costs



Location	Alternative	Alternative Segment	Impacts									Costs				
			Total New R/W Required (Acres)	Farmland Impacts (Acres)	Residential Relocations (Number)	Business Relocations (Number)	Farm Relocations (Number)	Farms Severed (Number)	Wetland (Acres)	Arch (Y or N)	Historical (Y or N)	Old Plank Road Trail (Feet)	Estimated Bridge Structure	Estimated Real Estate	Estimated Construction (including structures)	Total Project Including Delivery
West Segment	W5 North	Realignment of County P down Valley Lane to County C	17	1	0	0	0	0	2	N	N	0	0	250,000	3,000,000	3,980,000
		County P/WS 23 Intersection Closure	0	0	0	0	0	0	0	N	N	600	0	5,000	180,000	225,000
		<b>North Connector Roadway Totals:</b>	<b>17</b>	<b>1</b>	<b>0</b>	<b>0</b>	<b>0</b>	<b>0</b>	<b>2</b>	<b>0</b>	<b>0</b>	<b>600</b>	<b>0</b>	<b>\$255,000</b>	<b>\$3,180,000</b>	<b>\$4,205,000</b>
	W5 South	Connecting Road from Pioneer Road to County C	14	6	0	0	0	0	1	N	N	1,500	0	210,000	2,510,000	3,350,000
		WS 23/First Court Intersection Closure	0	0	0	0	0	0	0	N	N	0	0	5,000	180,000	225,000
		WS 23/Branch Road Intersection Closure	0	0	0	0	0	0	0	N	N	0	0	5,000	180,000	225,000
<b>South Connector Roadway Totals:</b>	<b>14</b>	<b>6</b>	<b>0</b>	<b>0</b>	<b>0</b>	<b>2</b>	<b>1</b>	<b>N</b>	<b>N</b>	<b>1,500</b>	<b>\$0</b>	<b>\$220,000</b>	<b>\$2,890,000</b>	<b>\$3,800,000</b>		
<b>West Segment Totals:</b>			<b>31</b>	<b>7</b>	<b>0</b>	<b>0</b>	<b>0</b>	<b>2</b>	<b>3</b>	<b>0</b>	<b>0</b>	<b>2100</b>	<b>\$0</b>	<b>\$475,000</b>	<b>\$6,070,000</b>	<b>\$8,005,000</b>
West-Central Segment	WC-4	Kiley Way -County O and Pleasant View Road	18	15	0	0	0	4	1	N	N	0	0	275,000	2,790,000	3,700,000
		County E Overpass and Reconstruct - Kiley Way to Woodland Road	5	3	1	0	1	0	1	N	N	1250	1,470,000	300,000	4,800,000	5,360,000
		County O Realignment	4	4	0	0	0	0	1	N	N	0	0	35,000	1,490,000	1,845,000
		Woodland Road from WS 67 to County E	17	15	0	0	0	3	1	N	N	0	0	568,000	2,800,000	4,050,000
		WS 23/County O Intersection Closure	0	0	0	0	0	0	0	N	N	800	0	5,000	180,000	225,000
		WS 23/Pleasant View Rd Intersection Closure	0	0	0	0	0	0	0	N	N	600	0	5,000	180,000	225,000
	<b>Woodland Road - North Connection Totals:</b>	<b>44</b>	<b>36</b>	<b>1</b>	<b>0</b>	<b>1</b>	<b>7</b>	<b>4</b>	<b>0</b>	<b>0</b>	<b>2450</b>	<b>\$1,470,000</b>	<b>\$1,188,000</b>	<b>\$12,270,000</b>	<b>\$16,405,000</b>	
	WC-5	Kiley Way - WS 67 to Pleasant View Road	25	17.56	1	1	1	4	3	N	N	0	6,750,000	1,375,550	12,710,000	17,155,550
		County O Realignment	4	4	0	0	0	0	1	N	N	0	0	35,000	1,490,000	1,845,000
		County E Overpass - Kiley Way to County O	2	2	1	0	1	0	1	N	N	320	1,470,000	300,000	3,240,000	4,320,000
WS 23/County O Intersection Closure		0	0	0	0	0	0	0	N	N	800	0	5,000	180,000	225,000	
<b>Kiley Way - South Connection (Mullet Bridge) Totals:</b>	<b>30</b>	<b>23</b>	<b>2</b>	<b>1</b>	<b>2</b>	<b>4</b>	<b>5</b>	<b>0</b>	<b>0</b>	<b>1520</b>	<b>\$8,220,000</b>	<b>\$1,720,550</b>	<b>\$17,770,000</b>	<b>\$23,770,550</b>		
East Segment	E2	County TT Interchange	27	23	0	1	0	0	3	N	N	2,800	6,750,000	2,000,000	15,730,000	19,920,800
		WS 23/Meadowlark Road Intersection Closure	0	0	0	0	0	0	0	N	N	800	0	5,000	180,000	225,000
		WS 23/Sunset Road Intersection Closure	0	0	0	0	0	0	0	N	N	800	0	5,000	180,000	225,000
		WS 23/Bridgwood Road Intersection Closure	0	0	0	0	0	0	0	N	N	800	0	5,000	180,000	225,000
		WS 23/Hillside Road Intersection Closure	0	0	0	0	0	0	0	N	N	800	0	5,000	180,000	225,000
		County M Overpass	2	1	0	0	0	0	0	N	N	1,500	1,700,000	30,000	3,960,000	4,200,000
		Willow Road Overpass	2	1	0	0	0	0	0	N	N	1,500	1,700,000	30,000	3,960,000	4,200,000
<b>County TT Interchange Totals:</b>	<b>31</b>	<b>25</b>	<b>0</b>	<b>1</b>	<b>0</b>	<b>0</b>	<b>3</b>	<b>0</b>	<b>0</b>	<b>8,200</b>	<b>\$10,150,000</b>	<b>\$2,080,000</b>	<b>\$23,170,000</b>	<b>\$29,220,800</b>		



# Other Alternatives Considered

