



This presentation is for the project on US 53 between County B in the town of Tilden north to WIS 64 in the town of Bloomer in Chippewa County.

Rather than holding an in-person meeting, public involvement efforts have moved online as a precaution against COVID-19 based on the most current health information from the state, federal and local health departments.

All meeting materials, including the handout with a comment form, are posted on the design website for this project.

<https://wisconsindot.gov/Pages/projects/by-region/nw/us53chipco/default.aspx>

If you have any questions, please contact WisDOT Project Manager Jesse Larson at (715) 491-1470.

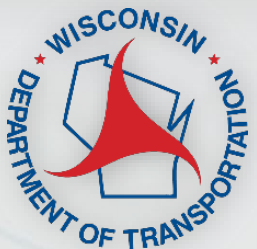


US 53 Project 1191-05-06/76 County Road B to WIS 64

Wisconsin Department of Transportation

Public Involvement Meeting

September 2020





Project Team

Nicole Passuello, P.E.

WisDOT Project Development Supervisor

Jesse Larson, P.E.

WisDOT Project Manager

Joe Malenofski, P.E.

CBS Squared, Inc.

Consultant Design Project Manager



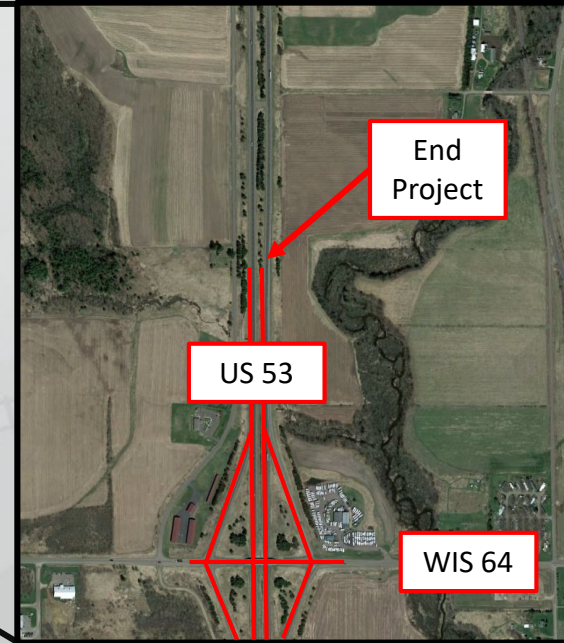
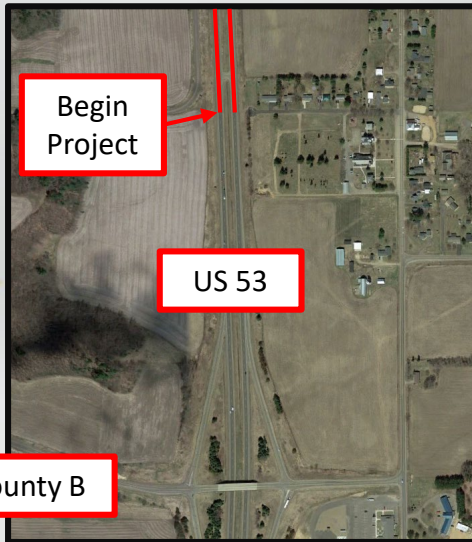
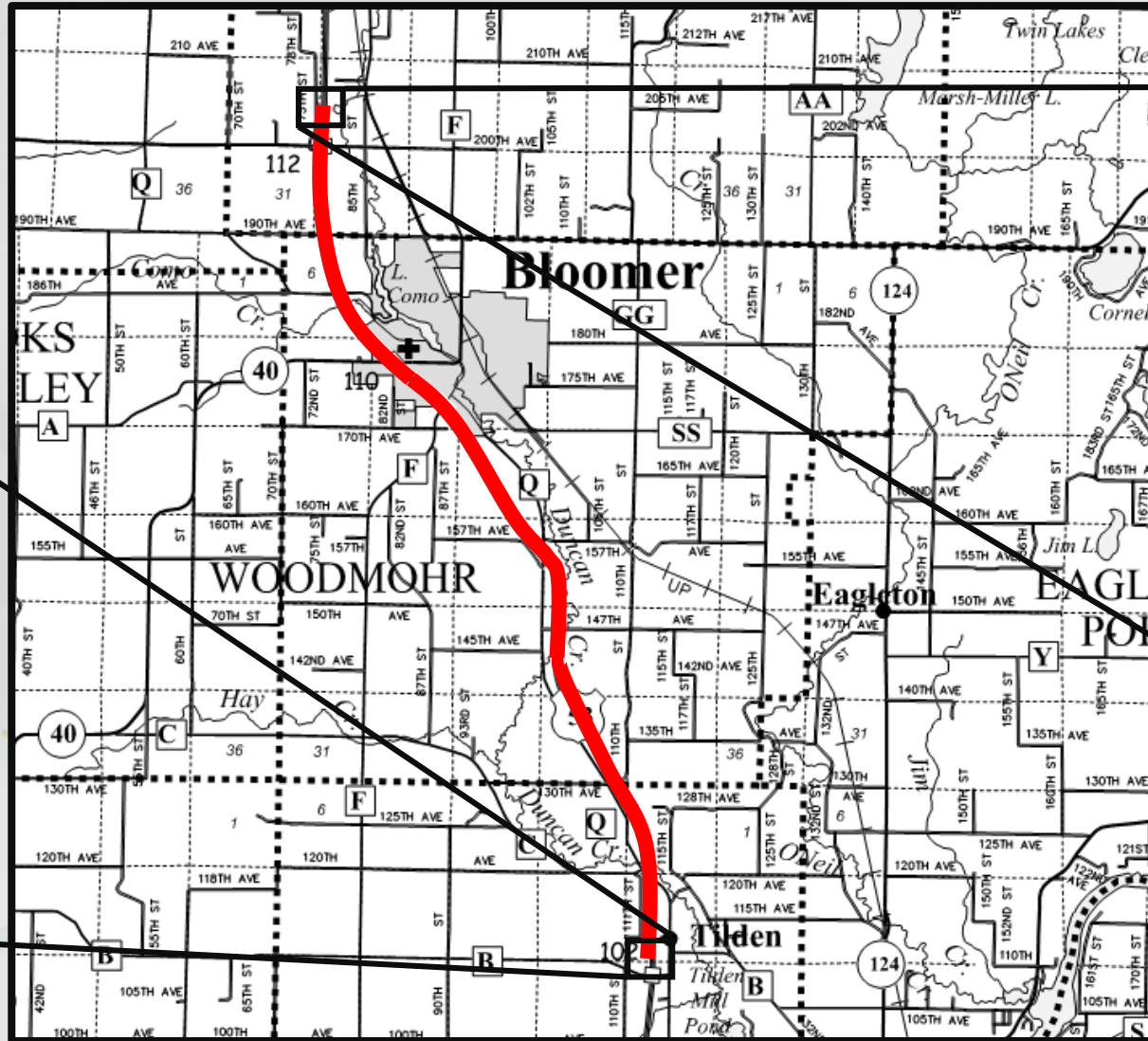


Presentation Agenda

- Project Limits
- Project Purpose & Need
- Proposed Improvements
- Project Schedule
- Contact Information



Project Location





Purpose and Need

- US 53 Importance
 - Part of the National Highway System
 - Truck route including movement of oversized-overweight loads
 - Serves local commuters and businesses
 - Interstate link to Minnesota
- WisDOT's objective is to ensure the safe and efficient operations of the state's Highway system while supporting local access






Purpose and Need

- Pavement Deterioration

- Original construction mid-1970s
- Asphaltic overlay in mid-2000s
- Cracking and rutting due to poor underlying concrete
- Existing pavement is nearing the end of its service life

- Bridge Deterioration

- County B over US 53
 - County Q over US 53 near 157th Avenue
 - WIS 40 over US 53
- 



US 53 Proposed Improvements

- Pavement improvements are recommended to keep traffic moving safely and efficiently.
- A pavement replacement alternative is proposed.
 - Asphaltic pavement overlay is not a cost-effective solution for this high-traffic corridor.
- Pavement replacement best addresses the project needs.
 - Balances level of investment in the roadway system with the added pavement life achieved





US 53 Proposed Improvements

- Place New Concrete Pavement
 - US 53
 - Interchange ramps at WIS 40 and WIS 64
 - WIS 40 and WIS 64 between ramps
- Pavement Replacement
 - Replacement of the aggregate drainage layer
 - Maintain existing alignment and travel lanes
 - Maintain existing intersection configurations





US 53 Proposed Improvements

- Repair bridges
 - County B – Replace bridge deck overlay, joints, and railing; repair surface
 - County Q – Paint bridge
 - WIS 40 - Replace bridge deck overlay, joints, and railing; repair surface; and paint bridge
- Replace culverts
- Replace beam guard
- Replace right-of-way fencing
- Replace marking and shoulder rumble strips






Real Estate Needs

- All work is proposed to be inside the existing right-of-way
- Right-of-way fencing proposed to be replaced.
 - If fencing holds livestock, please contact WisDOT.
 - Coordination will occur with the property owner during construction.





Current Construction Schedule

- Construction is currently scheduled to begin in spring 2025.
 - Construction of temporary crossovers on US 53 may begin in fall 2024.
 - Construction is anticipated to take two construction seasons, completion in fall 2026.
- 





Preliminary Construction Staging

- Maintaining safety and mobility during construction are high priorities
 - Traffic on US 53, WIS 40, and WIS 64 can be maintained effectively with one lane in each direction.
 - Interchange ramps at WIS 40 and WIS 64 will be closed for short periods.
 - Only one exit and one entrance ramp at each interchange will be allowed to be closed at the same time.
 - Consecutive interchange ramps will not be closed at the same time.
- All lanes and ramps will be open on holiday travel weekends.





Preliminary Construction Staging

- Temporary median crossovers are proposed to facilitate movements between northbound and southbound US 53.
 - North of County B
 - South of County F
 - North of WIS 64
- Temporary median crossovers are proposed to facilitate movements between US 53 and interchange ramps.
- Temporary traffic signals are proposed on County B and WIS 64 for directing a single lane of traffic crossing the overpass bridges.



Preliminary 2025 Construction Staging

Timeframe	Work Location	Traffic Conditions
Spring 2025*	Temporary crossovers along US 53	- Single lane closures on US 53 - All interchanges open
Spring 2025	NB US 53 from County B to 147th Ave	- Bidirectional traffic on SB US 53 from County B to County F - Normal traffic on US 53 north of County F
Early Summer 2025	NB US 53 from 147th Ave to County F	- Bidirectional traffic on SB US 53 from County B to County F - Normal traffic on US 53 north of County F
Late Summer 2025	SB US 53 from County F to 147th Ave	- Bidirectional traffic on NB US 53 from County B to County F - Normal traffic on US 53 north of County F
Fall 2025	SB US 53 from 147th Ave to County B	- Bidirectional traffic on NB US 53 from County B to County F - Normal traffic on US 53 north of County F
Winter Shutdown	None	- All lanes and all interchanges open

Notes

- Timeframes, Work Locations, and Traffic Conditions as shown above are preliminary and may be adjusted in final design.
- Spring = Before Memorial Day
- Summer = Memorial Day to Labor Day
- Fall = After Labor Day
- SB = Southbound; NB = Northbound
- * - Potential for this work to take place in the Fall of 2024.



Preliminary 2026 Construction Staging

Timeframe	Work Location	Traffic Conditions
Spring 2026	NB US 53 from County F to Lake Como	- Bidirectional traffic on SB US 53 from County F to WIS 64 - Normal traffic on US 53 south of County F
	WIS 40 NB ramps	- WIS 40 NB ramps closed (late spring for approx. 3 weeks)
Early - Mid-Summer 2026	NB US 53 from Lake Como to WIS 64	- Bidirectional traffic on SB US 53 from County F to WIS 64 - Normal traffic on US 53 south of County F
	WIS 64 NB ramps	- WIS 64 NB ramps closed (early summer for approx. 3 weeks)
	WIS 40	- Bidirectional traffic on WIS 40 from Woodard Rd to 19th Ave
	WIS 64	- Single lane traffic on WIS 64 from 80th St to east of NB ramps - Temporary traffic signals on WIS 64
	County B bridge work	- Single lane traffic on County B - Temporary traffic signals on County B
Mid - Late-Summer 2026	SB US 53 from WIS 64 to Lake Como	- Bidirectional traffic on NB US 53 from County F to WIS 64 - Normal traffic on US 53 south of County F
	WIS 64 SB ramps	- WIS 64 SB ramps closed (mid summer for approx. 3 weeks)
	WIS 40	- Bidirectional traffic on WIS 40 from Woodard Rd to 19th Ave
	WIS 64	- Bidirectional traffic on WIS 64 from 80th St to east of NB ramps - Temporary traffic signals on WIS 64
Fall 2026	SB US 53 from Lake Como to County F	- Bidirectional traffic on NB US 53 from County F to WIS 64 - Normal traffic on US 53 south of County F
	WIS 40 SB ramps	- WIS 40 SB ramps closed (early fall for approx. 3 weeks)
	Temporary crossovers along US 53 (removal)	- Single lane closures on US 53 - All interchanges open

Notes

- Timeframes, Work Locations, and Traffic Conditions as shown above are preliminary and may be adjusted in final design.
- Spring = Before Memorial Day
- Summer = Memorial Day to Labor Day
- Fall = After Labor Day
- SB = Southbound; NB = Northbound





Current Project Schedule

- Concept Plans – April 2020
 - Public Involvement – September 2020
 - Environmental Document – Fall/Winter 2020
 - Preliminary Plans – February 2021
 - Final Plans – August 2023
 - Construction – Spring 2025 to Fall 2026
- 





Project Design Website

- <https://wisconsin.gov/Pages/projects/by-region/nw/us53chipco/default.aspx>





Questions and Input

- Provide comments by Oct. 5, 2020
 - Via written comment form
Jesse Larson, P.E.
WisDOT Northwest Region – Eau Claire Office
718 W. Clairemont Avenue
Eau Claire, WI 54701
 - Via email
Jesse.Larson@dot.wi.gov

