

WisDOT IDs: 8610-08-02/72, 8610-08-03/73, 8610-02-04/74
 Chippewa Falls to Bloomer

February 2023

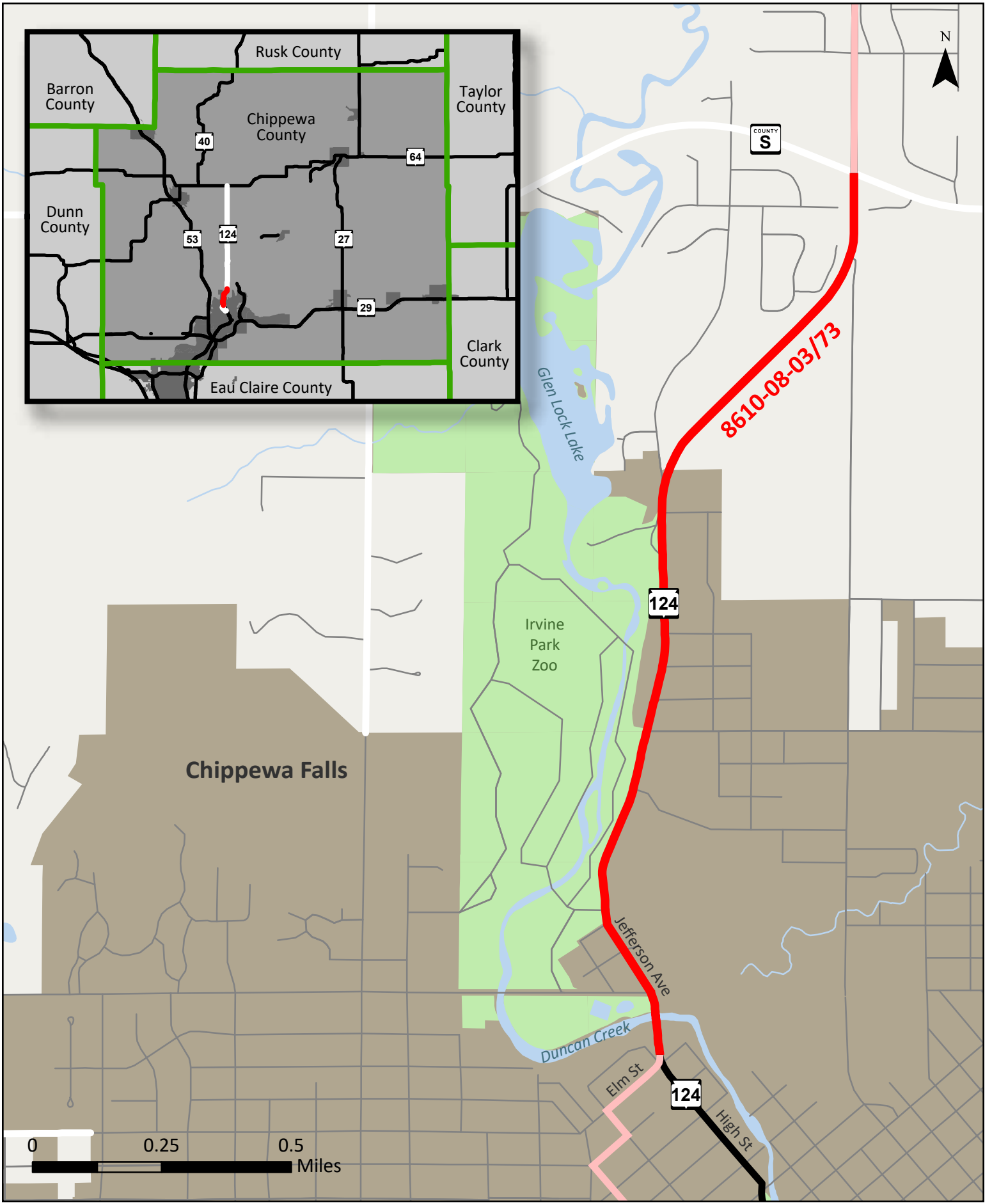
Project Location
 Chippewa County: WIS 124



WisDOT IDs: 8610-08-02/72, 8610-08-03/73, 8610-02-04/74
 Chippewa Falls to Bloomer

February 2023

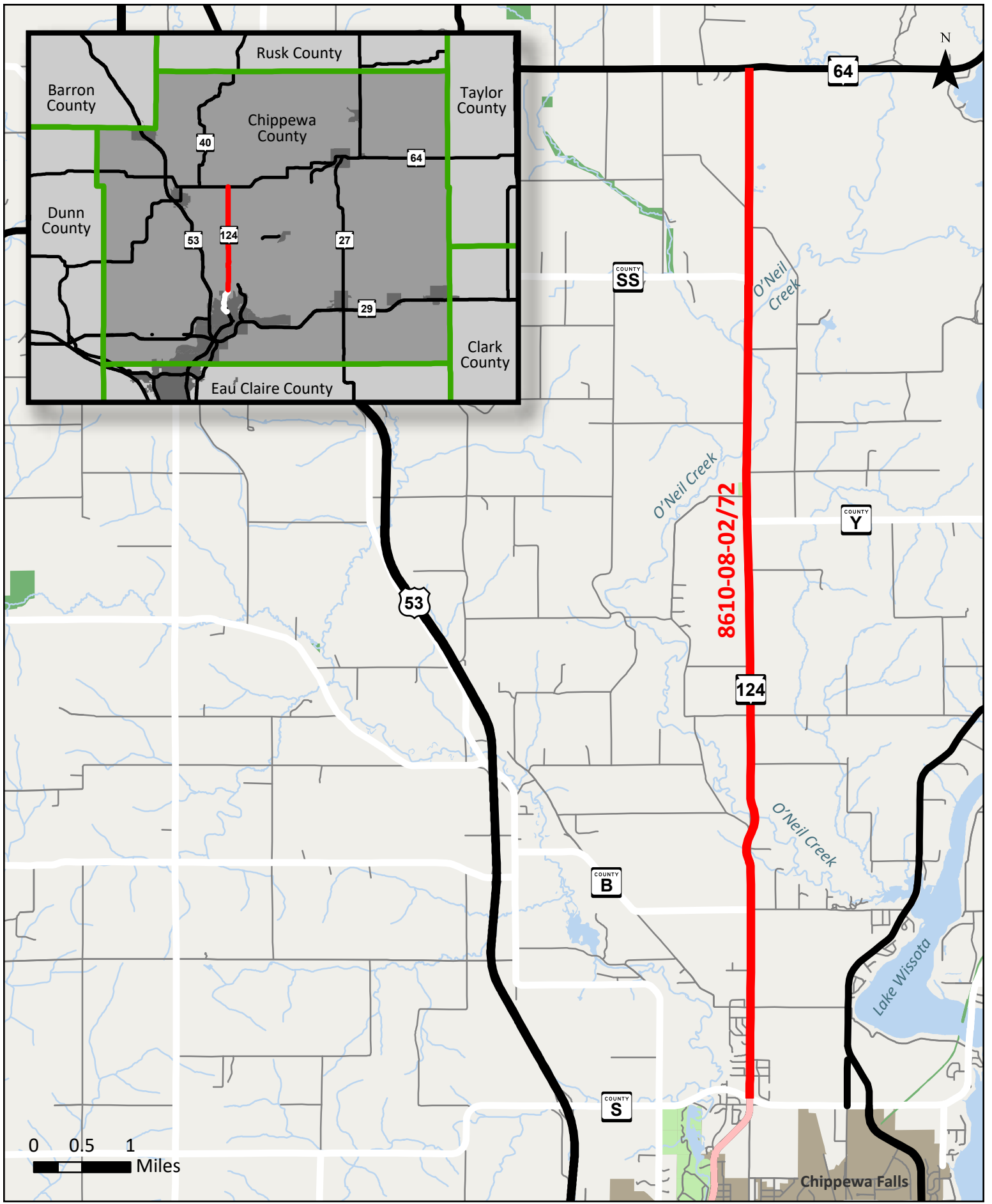
Project Location
 Chippewa County: WIS 124



WisDOT IDs: 8610-08-02/72, 8610-08-03/73, 8610-02-04/74
 Chippewa Falls to Bloomer

February 2023

Project Location
Chippewa County: WIS 124



WisDOT IDs: 8610-08-02/72, 8610-08-03/73, 8610-02-04/74
 Chippewa Falls to Bloomer
 February 2023

Project Location
Chippewa County: WIS 124
 Page 4 of 4