

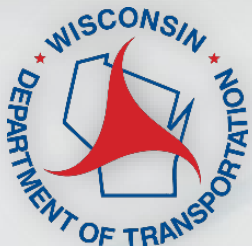
This presentation is for the project on WIS 27 between Black Bear Road and the Eau Claire-Chippewa County line in the Eau Claire County towns of Bridge Creek and Ludington.

An in-person meeting is not planned based on public health guidance to limit public gatherings.

All meeting materials, including the handout with a comment form, are posted on the design website for this project, which can be found at:

<https://wisconsindot.gov/Pages/projects/by-region/nw/wis27augusta/default.aspx>.

If you have any questions, please contact WisDOT Project Manager Jessica Bowker at 715-577-2963.



Public Involvement

WIS 27

Black Bear Road to Eau Claire-Chippewa County Line

&

Darrow Creek Culvert

Eau Claire County

June 25, 2020



Project team

- WisDOT Northwest Region
 - Jessica Bowker, P.E. – Project Manager
- MSA Professional Services, Inc.
 - Sean Spromberg, P.E. – Consultant Designer

Event objectives

- Project location
- Project purpose and need
- Proposed improvements
- Traffic control/detour
- Real estate needs
- Current project schedule
- Discussion

Purpose and need

- WIS 27 importance
 - Regional route for truck and passenger vehicles
 - Primary north-south route in Eau Claire County
- WisDOT's objective is to ensure the safe and efficient operations of the state's highway system while supporting local access.

Purpose and need

- Identified needs

- Deteriorating asphalt pavement.
- Culvert pipes along the corridor are showing signs of deterioration. This includes the large concrete culvert at Darrow Creek.
- Beam guard does not meet current crash standards.
- The intersection of WIS 27 and County D requires drainage improvements.

WIS 27 proposed improvements

- Pavement recycling and overlay with additional improvements best addresses the project needs.
 - Balances level of investment in the roadway system while achieving added pavement life.
- WisDOT's objective is to ensure the safe and efficient operations of the state's highway system while supporting local access.

WIS 27 proposed improvements

- Improvements recommended to keep traffic moving safely and efficiently.
 - Recycling the existing asphalt pavement in place and overlaying it with new asphalt.
 - Replacing deteriorating culverts.
 - Replacing the large concrete culvert at Darrow Creek.
 - Replacing or removing nonstandard beam guard.
 - Improving drainage at the WIS 27 and County D intersection.

Culvert improvements

- Deteriorating culverts will be replaced.



Beam guard improvements

- Existing nonstandard beam guard will be replaced or removed.



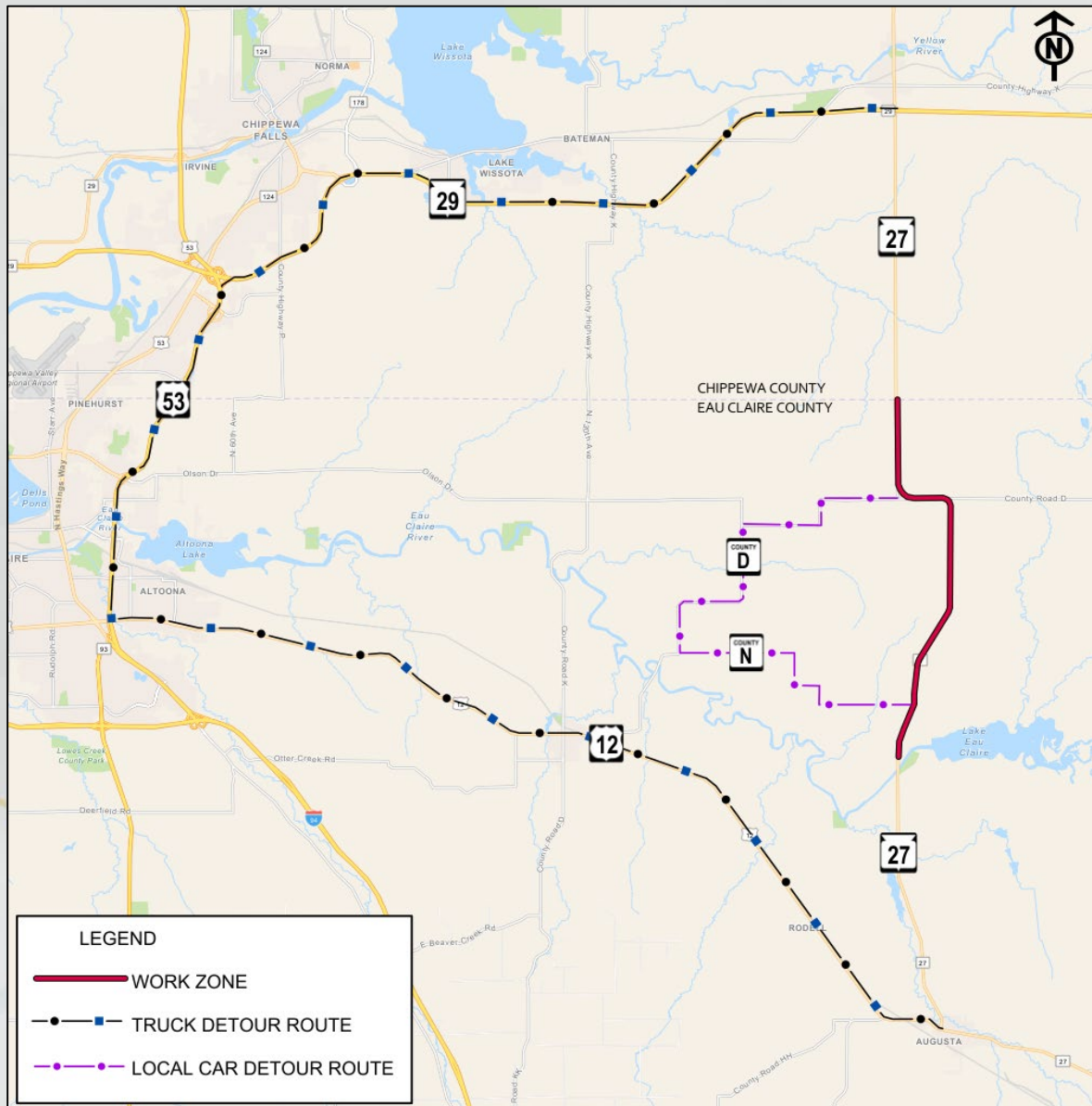
Proposed construction staging

- Maintaining safety and mobility are important during construction
- Proposed traffic impacts
 - Flagging operations
 - Shoulder closures
 - Detour for culvert replacements
 - Local and emergency access will be maintained
- Work staged outside of area events

Proposed detour for culvert replacements

- WIS 27 will be detoured for approximately 45 days to install new culverts. Traffic is proposed to be detoured as follows:
 - Trucks routed west of the project on US 12 to Altoona, US 53 to Lake Hallie and WIS 29 to Cadott. The detour is an additional 43 miles of travel length.
 - Cars routed west on County N then north along County D to WIS 27 at Ludington. The detour is an additional 13 miles of travel length.

Proposed detour for culvert replacements



Real estate needs

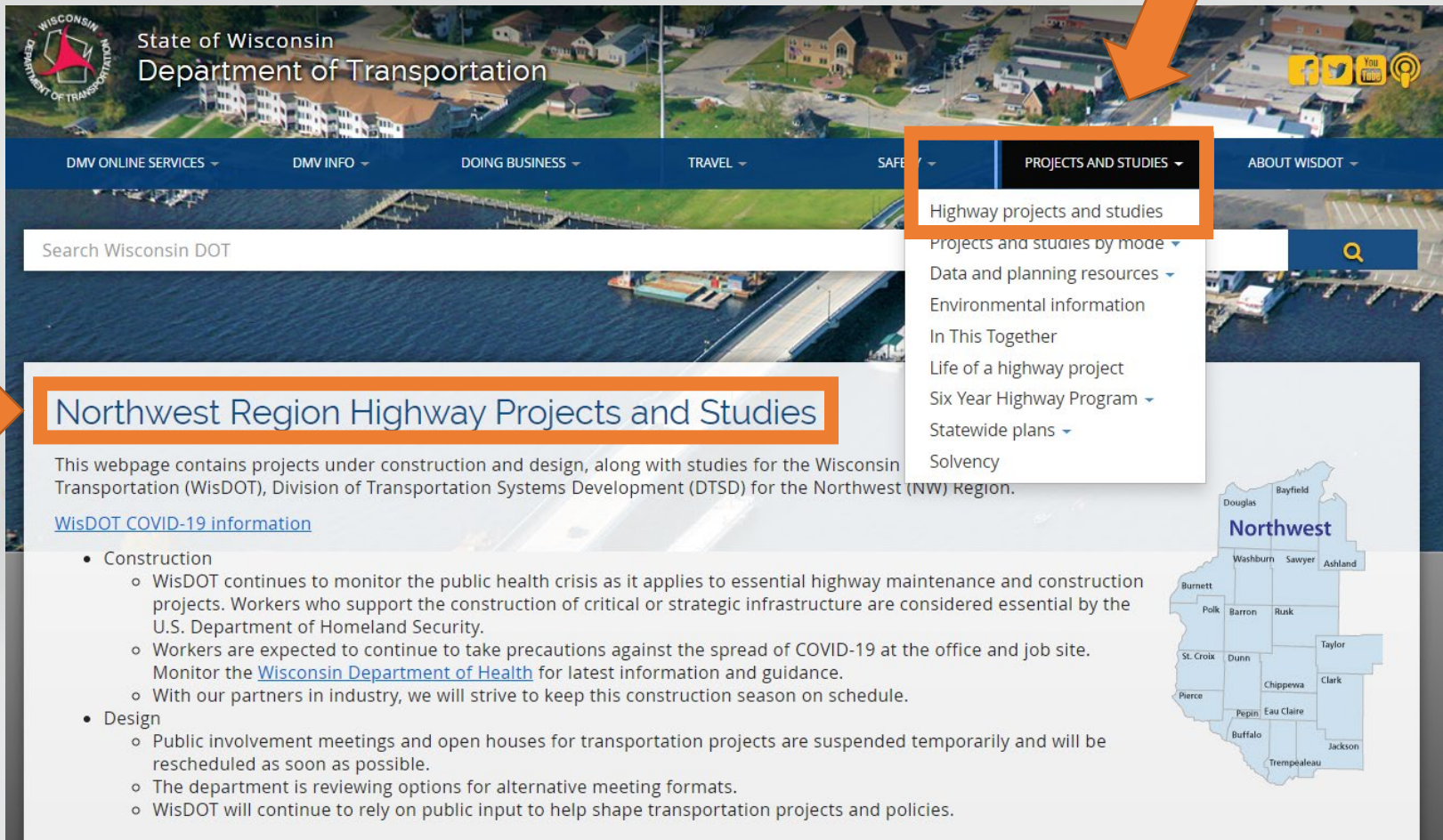
- Minor permanent fee and temporary limited easements may be needed at the Darrow Creek culvert replacement.
- Acquisition process
 - WisDOT will acquire real estate.
 - Individual property owner meetings will be held
 - Real estate acquisitions will begin in 2021/2022.
- Landowner rights brochure on the project website

Current project schedule

- Preliminary plans – March 2020
- Local official meetings – May 2020
- Public involvement event – June 2020
- Final environmental document – August 2020
- Final right of way plat – October 2021
- Right-of-way acquisition – Winter 2021 to Summer 2022
- Final plans – August 2023
- Construction – Spring/Summer 2024

Project Website

Visit: WisconsinDOT.gov



The screenshot shows the Wisconsin Department of Transportation website. The header includes the state logo and the text "State of Wisconsin Department of Transportation". A navigation bar contains links for "DMV ONLINE SERVICES", "DMV INFO", "DOING BUSINESS", "TRAVEL", "SAFETY", "PROJECTS AND STUDIES", and "ABOUT WISDOT". The "PROJECTS AND STUDIES" menu is open, listing options such as "Highway projects and studies", "Projects and studies by mode", "Data and planning resources", "Environmental information", "In This Together", "Life of a highway project", "Six Year Highway Program", "Statewide plans", and "Solvency". An orange arrow points to the "PROJECTS AND STUDIES" menu. Another orange arrow points to the "Northwest Region Highway Projects and Studies" section, which is highlighted with an orange border. Below this section, there is a search bar and a description of the webpage's content. A map of Wisconsin highlights the Northwest region, with counties labeled: Douglas, Bayfield, Washburn, Sawyer, Ashland, Burnett, Polk, Barron, Rusk, Taylor, St. Croix, Dunn, Chippewa, Clark, Pierce, Pepin, Eau Claire, Buffalo, and Trempealeau.

State of Wisconsin
Department of Transportation

DMV ONLINE SERVICES ▾ DMV INFO ▾ DOING BUSINESS ▾ TRAVEL ▾ SAFETY ▾ **PROJECTS AND STUDIES ▾** ABOUT WISDOT ▾

Search Wisconsin DOT

Northwest Region Highway Projects and Studies

This webpage contains projects under construction and design, along with studies for the Wisconsin Department of Transportation (WisDOT), Division of Transportation Systems Development (DTSD) for the Northwest (NW) Region.

[WisDOT COVID-19 information](#)

- Construction
 - WisDOT continues to monitor the public health crisis as it applies to essential highway maintenance and construction projects. Workers who support the construction of critical or strategic infrastructure are considered essential by the U.S. Department of Homeland Security.
 - Workers are expected to continue to take precautions against the spread of COVID-19 at the office and job site. Monitor the [Wisconsin Department of Health](#) for latest information and guidance.
 - With our partners in industry, we will strive to keep this construction season on schedule.
- Design
 - Public involvement meetings and open houses for transportation projects are suspended temporarily and will be rescheduled as soon as possible.
 - The department is reviewing options for alternative meeting formats.
 - WisDOT will continue to rely on public input to help shape transportation projects and policies.

Northwest

Douglas Bayfield
Washburn Sawyer Ashland
Burnett Polk Barron Rusk Taylor
St. Croix Dunn Chippewa Clark
Pierce Pepin Eau Claire
Buffalo Jackson
Trempealeau

Questions and input

➤ Provide comments by **July 14, 2020**

- Via written comment form

Jessica Bowker

Wisconsin Department of Transportation

718 W. Clairemont Ave.

Eau Claire, WI 54701

- Via email

Jessica.Bowker@dot.wi.gov