



I-43 N-S: ID 1228-22-01/71

FUTURE NOISE LEVELS – Noise barrier 6

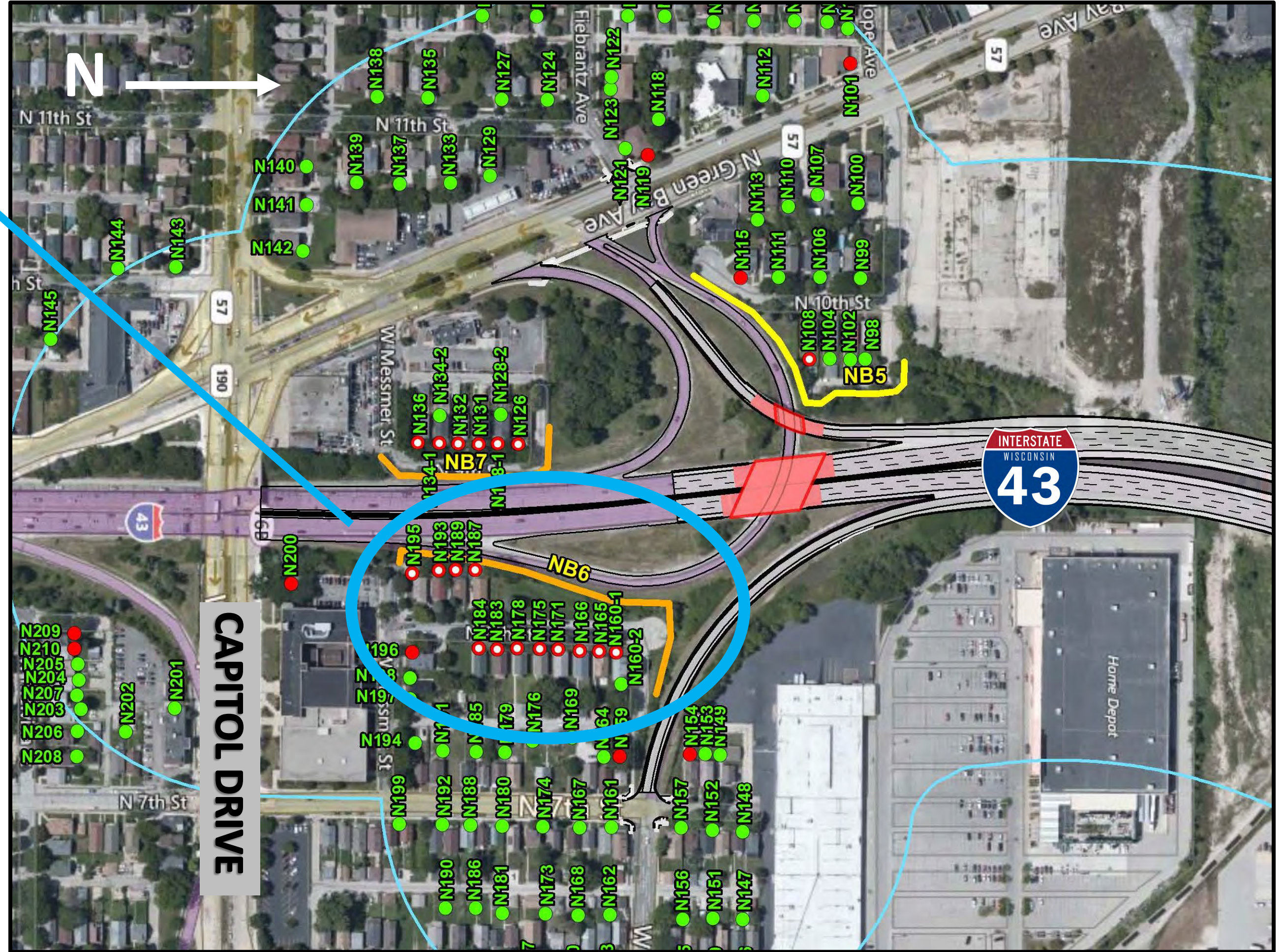
MAY 2020

Here is information on noise reduction for the barrier just north of Capitol Drive on the east side of I-43.

The orange line represents the location of the noise barrier.

The green and red dots are locations of noise measurements. We took actual noise measurements and used computer models to determine future noise levels.

Below is a chart illustrating the noise levels in decibels (dB) with and without a noise barrier at the properties most impacted by the potential barrier.



Receptor number	Address	Future Sound level - (dBA Without Wall)	Future Sound level - (dBA With Wall)	Change
160-1	4092 N. 8 th Street	66	58	8
165	4088 N. 8 th Street	66	58	8
166	4084 N. 8 th Street	66	58	8
171	4078 N. 8 th Street	67	59	8
175	4072 N. 8 th Street	68	59	9
178	4066 N. 8 th Street	69	60	9
183	4062 N. 8 th Street	69	60	9
184	4056 N. 8 th Street	69	60	9
187	4057 N. 8 th Street	77	62	15
189	4053 N. 8 th Street	77	63	14
193	4045 N. 8 th Street	77	64	13
195	4041 N. 8 th Street	76	68	8