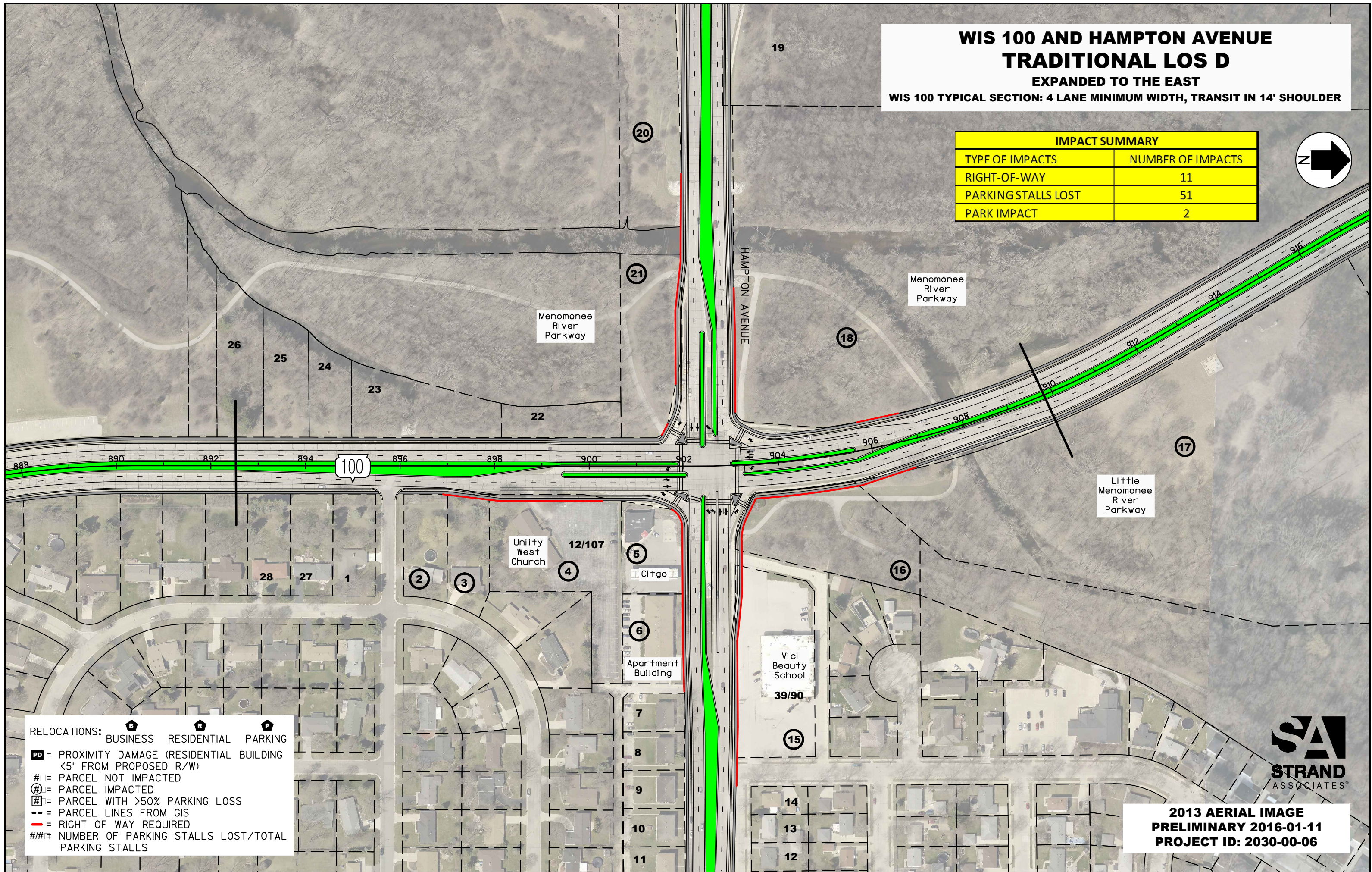
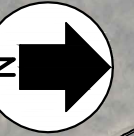


# WIS 100 AND HAMPTON AVENUE TRADITIONAL LOS D

EXPANDED TO THE EAST

WIS 100 TYPICAL SECTION: 4 LANE MINIMUM WIDTH, TRANSIT IN 14' SHOULDER

IMPACT SUMMARY	
TYPE OF IMPACTS	NUMBER OF IMPACTS
RIGHT-OF-WAY	11
PARKING STALLS LOST	51
PARK IMPACT	2



RELOCATIONS: **B** BUSINESS **R** RESIDENTIAL **P** PARKING  
**PD** = PROXIMITY DAMAGE (RESIDENTIAL BUILDING <5' FROM PROPOSED R/W)  
**#** = PARCEL NOT IMPACTED  
**⊕** = PARCEL IMPACTED  
**#** = PARCEL WITH >50% PARKING LOSS  
 --- = PARCEL LINES FROM GIS  
 --- = RIGHT OF WAY REQUIRED  
 ## = NUMBER OF PARKING STALLS LOST/TOTAL PARKING STALLS

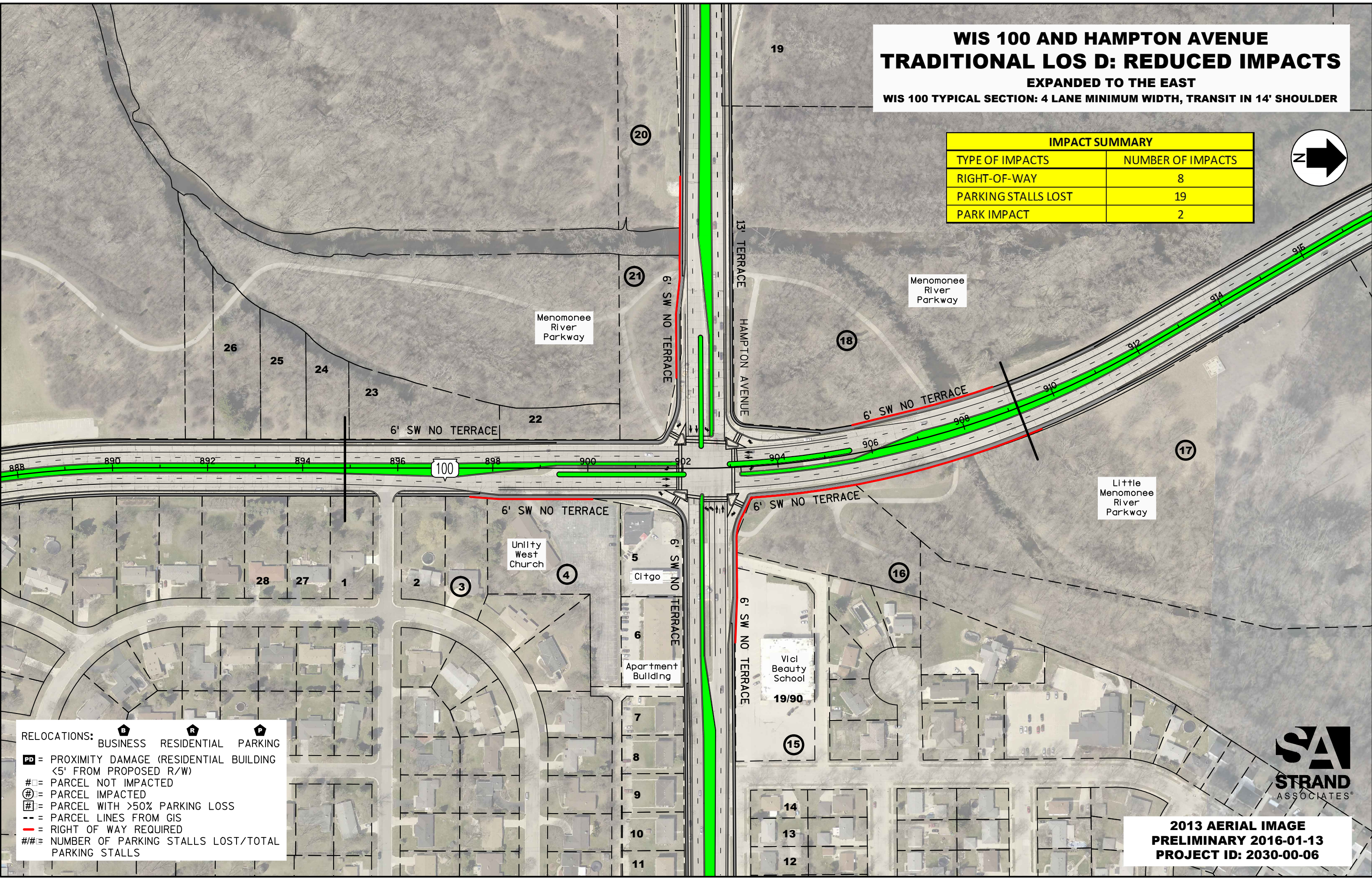
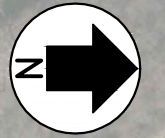


2013 AERIAL IMAGE  
 PRELIMINARY 2016-01-11  
 PROJECT ID: 2030-00-06



**WIS 100 AND HAMPTON AVENUE  
TRADITIONAL LOS D: REDUCED IMPACTS  
EXPANDED TO THE EAST**  
WIS 100 TYPICAL SECTION: 4 LANE MINIMUM WIDTH, TRANSIT IN 14' SHOULDER

IMPACT SUMMARY	
TYPE OF IMPACTS	NUMBER OF IMPACTS
RIGHT-OF-WAY	8
PARKING STALLS LOST	19
PARK IMPACT	2



RELOCATIONS: BUSINESS RESIDENTIAL PARKING

= PROXIMITY DAMAGE (RESIDENTIAL BUILDING <5' FROM PROPOSED R/W)

= PARCEL NOT IMPACTED

= PARCEL IMPACTED

= PARCEL WITH >50% PARKING LOSS

--- = PARCEL LINES FROM GIS

— = RIGHT OF WAY REQUIRED

##/## = NUMBER OF PARKING STALLS LOST/TOTAL PARKING STALLS



**2013 AERIAL IMAGE  
PRELIMINARY 2016-01-13  
PROJECT ID: 2030-00-06**



## Range of Alternatives Impact Summary Chart

### Hampton Avenue Intersection

Alternative	R/W-Only Impacted Parcels	Estimated Relocations Required		Estimated Relocation Cost (Millions)	Parking Stalls Lost	Details
		Business Parcels	Residential Parcels			
Traditional LOS D	11	0	0	\$0	51	-Impacts Menomonee River Parkway (in 2 locations) and Little Menomonee River Parkway.
Traditional LOS D: Reduced Impacts	8	0	0	\$0	19	-Impacts Menomonee River Parkway (in 2 locations) and Little Menomonee River Parkway.