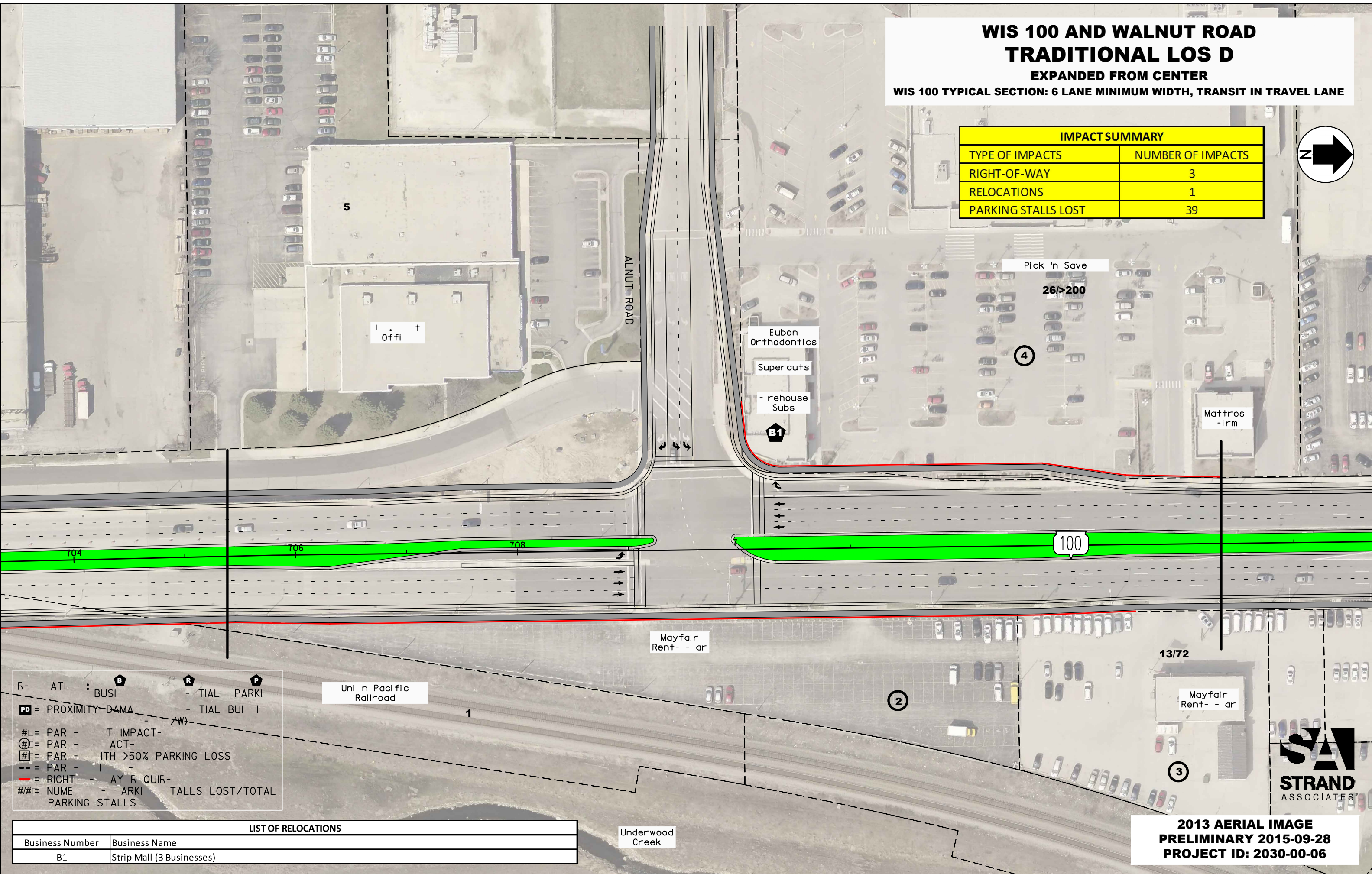


WIS 100 AND WALNUT ROAD TRADITIONAL LOS D EXPANDED FROM CENTER

WIS 100 TYPICAL SECTION: 6 LANE MINIMUM WIDTH, TRANSIT IN TRAVEL LANE

IMPACT SUMMARY	
TYPE OF IMPACTS	NUMBER OF IMPACTS
RIGHT-OF-WAY	3
RELOCATIONS	1
PARKING STALLS LOST	39



R- ATI : BUSI **B** **R** **P**
 - TIAL PARKI
 - TIAL BUI I
PD = PROXIMITY-DAMA
 # = PAR - T IMPACT-
 @ = PAR - ACT-
 # = PAR - ITH >50% PARKING LOSS
 - = PAR - I
 - = RIGHT - AY R QUIR-
 ## = NUME - ARKI TALLS LOST/TOTAL
 PARKING STALLS

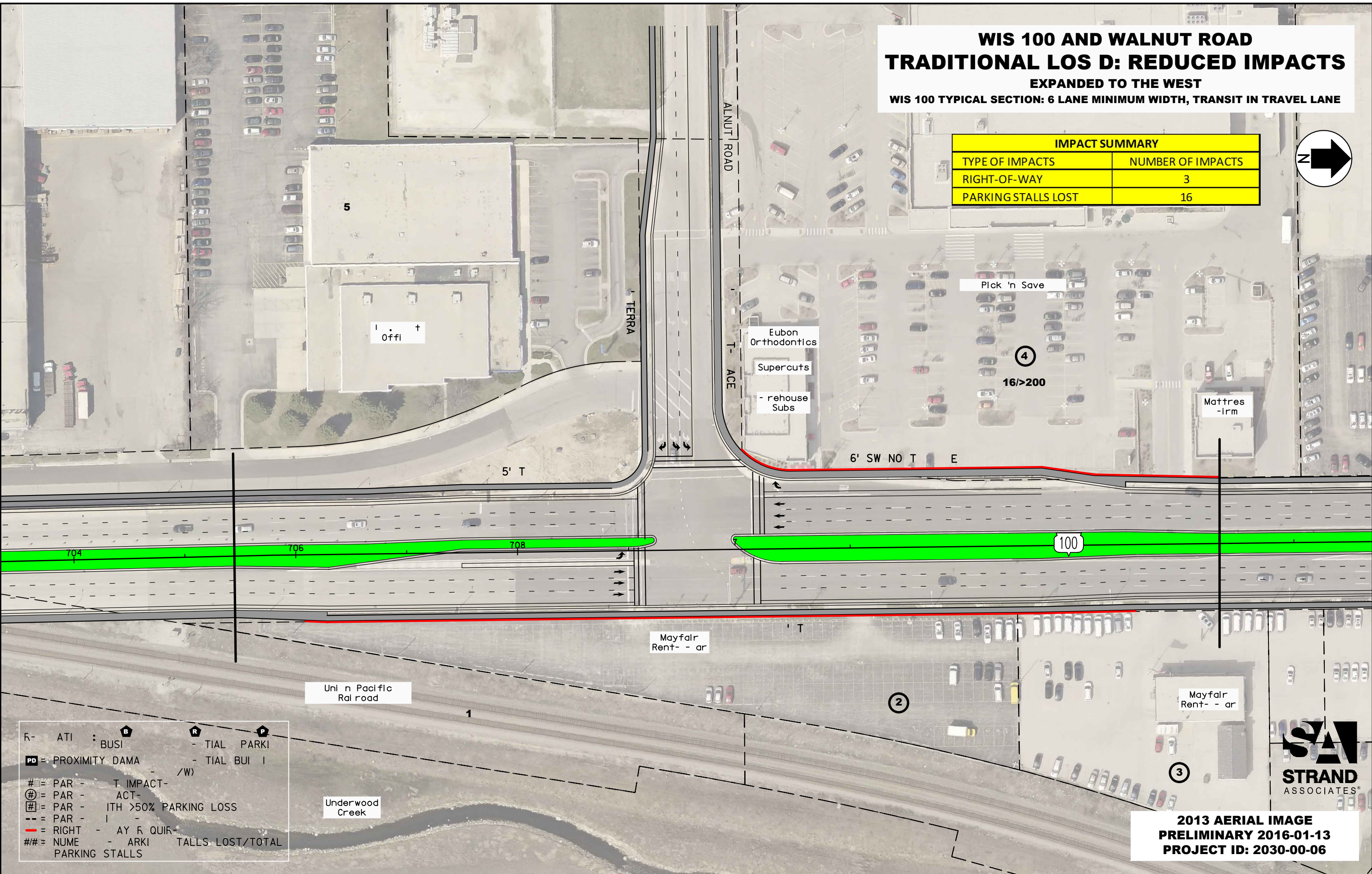
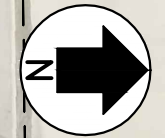
LIST OF RELOCATIONS	
Business Number	Business Name
B1	Strip Mall (3 Businesses)



**2013 AERIAL IMAGE
 PRELIMINARY 2015-09-28
 PROJECT ID: 2030-00-06**

**WIS 100 AND WALNUT ROAD
TRADITIONAL LOS D: REDUCED IMPACTS
EXPANDED TO THE WEST
WIS 100 TYPICAL SECTION: 6 LANE MINIMUM WIDTH, TRANSIT IN TRAVEL LANE**

IMPACT SUMMARY	
TYPE OF IMPACTS	NUMBER OF IMPACTS
RIGHT-OF-WAY	3
PARKING STALLS LOST	16



R- ATI : BUSI - TIAL PARKI
 PD = PROXIMITY DAMA - TIAL BUI I
 # = PAR - T IMPACT- /W)
 ⊕ = PAR - ACT-
 # = PAR - ITH >50% PARKING LOSS
 - - = PAR - I -
 - = RIGHT - AY R QUIR-
 ## = NUME - ARKI TALLS LOST/TOTAL
 PARKING STALLS



**2013 AERIAL IMAGE
PRELIMINARY 2016-01-13
PROJECT ID: 2030-00-06**

Range of Alternatives Impact Summary Chart

Walnut Road Intersection

Alternative	R/W-Only Impacted Parcels	Estimated Relocations Required		Estimated Relocation Cost (Millions)	Parking Stalls Lost	Details
		Business Parcels	Residential Parcels			
Traditional LOS D	3	1 bldg. (Includes 3 Businesses)	0	Unknown	39	-Impacts 1 commercial bldg. (3 businesses total) due to direct physical conflicts.
Traditional LOS D: Reduced Impacts	3	0	0	\$0	16	-Parking impact is minimal.