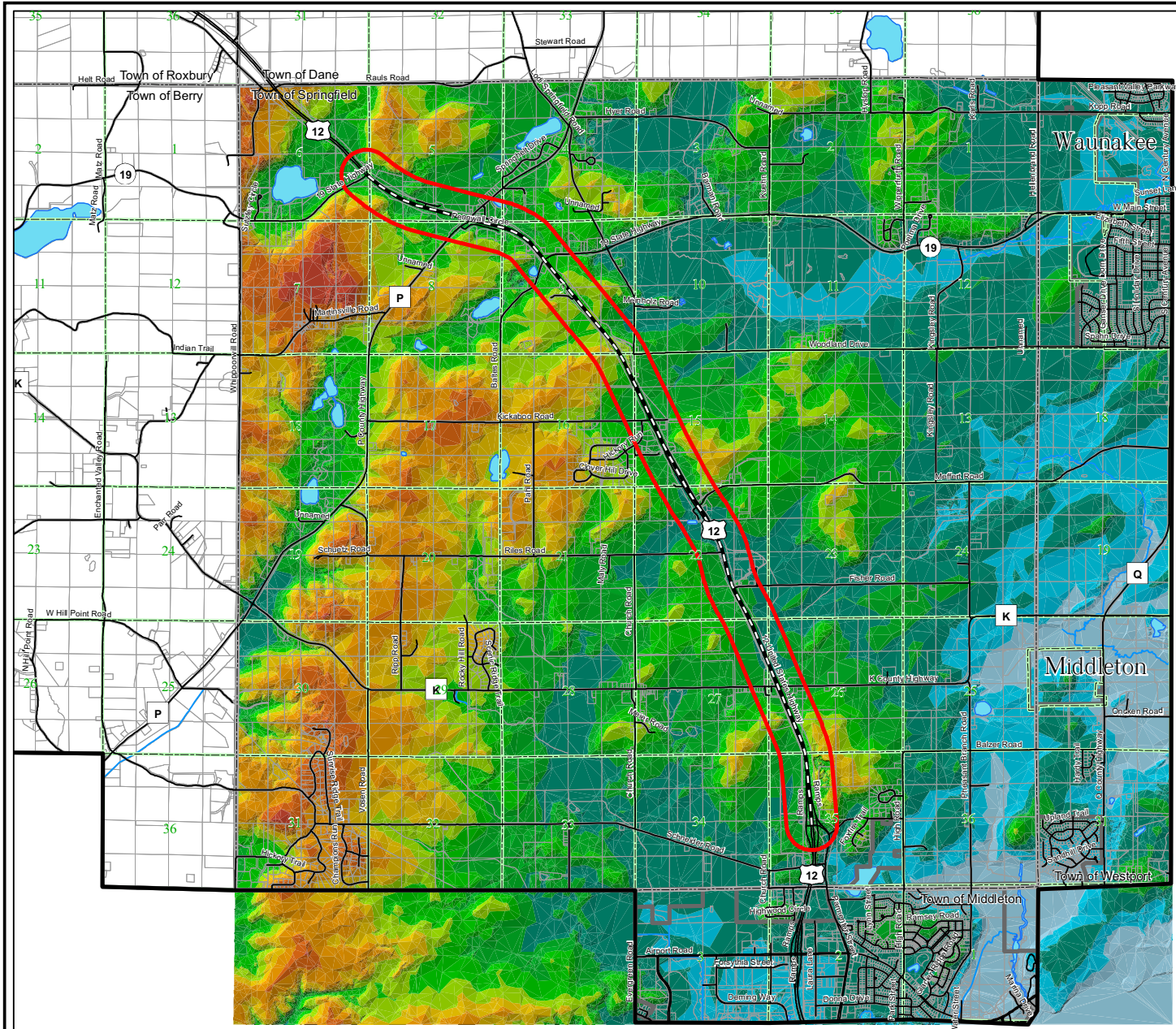
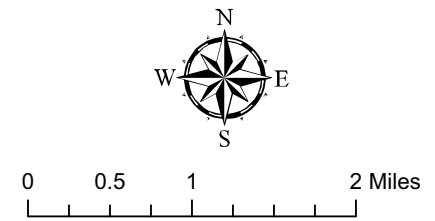


U.S. 12 Dane County, Wisconsin Shaded Relief Map



Legend

Project Area	1177.2 - 1213.6
USH 12 Buffer Area	1140.7 - 1177.2
USH 12 Centerline	1104.3 - 1140.7
Roads	1067.8 - 1104.3
Townships	1031.3 - 1067.8
Sections	994.9 - 1031.3
Municipal Divisions	958.4 - 994.9
Lakes	921.9 - 958.4
Rivers	885.5 - 921.9
Parcels	849 - 885.5



Sources:
 - Base map data provided by Dane County
 - DEM provided by Dane County LIO

