

# ***PUBLIC INFORMATION MEETING***

**US 12 FREEWAY CONVERSION STUDY**

**Project I.D. 5300-05-00**

**Parmenter Interchange to STH 19 West**

**Town of Springfield, Dane County**

**October 28, 2008**



## **MEETING AGENDA**

- ▶ Identify study team members
- ▶ Summarize study purpose & need
- ▶ Review project study scope
- ▶ Summarize input gathered to date
- ▶ Review preliminary design alternatives
- ▶ Review schedule
- ▶ Open House



## PROJECT STAFF

- ▶ Wisconsin Department of Transportation
  - Tom Koprowski – Project Manager
  - Jeff Berens – Lead Engineer
  - Michael Hoelker – Planning Supervisor
  
- ▶ MSA Professional Services, Inc.
  - David Boyd – Project Manager
  - Mike Statz – Lead Engineer
  - Loren Kugler – Highway Engineer
  - Kevin Ruhland – Traffic Engineer
  - Andrew Bremer – Project Planner
  
- ▶ KJohnson Engineers, Inc.
  - Rielly O'Donnell – Design Engineer



## STUDY PURPOSE & NEED

### Purpose:

- ▶ Conceptualize the conversion of US 12 from Parmenter Interchange to Wis 19 West from an expressway into a freeway facility
  - Freeway: Four lane divided roadway with access provided only through interchanges
  - Expressway: Intersections with side roads and private driveways allowed

### Need:

- ▶ Address increasing local and regional traffic volumes
- ▶ Enhance long term safety & operations
- ▶ Prevent conflicting and costly economic development from happening within the right-of-way
- ▶ Coordinate long term land use planning & transportation needs



## STUDY PURPOSE & NEED, cont.

- ▶ How decision is made to convert to a freeway facility

### Mobility factors

- Functional class - this is a US Highway
- Projected level of service (LOS) - based primarily upon traffic projections, expected delay in travel times, & queue lengths.
- Regional connections – freight, passenger, tourism

### Safety

- Crash rates and severity

### Development pressures

- Population, employment, traffic growth



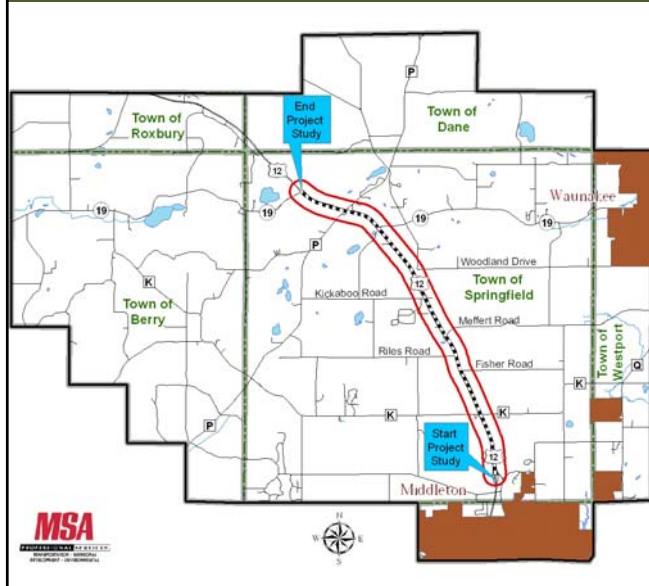
## KEY POINTS OF THIS MEETING

- ▶ This is just a mapping study and there are no impending construction projects associated with this study at this time.

- ▶ All of the concept alternatives are preliminary at this point and the project staff are open to any and all comments on the concepts and any new ideas you may have.



# PROJECT STUDY SCOPE



## Project limits

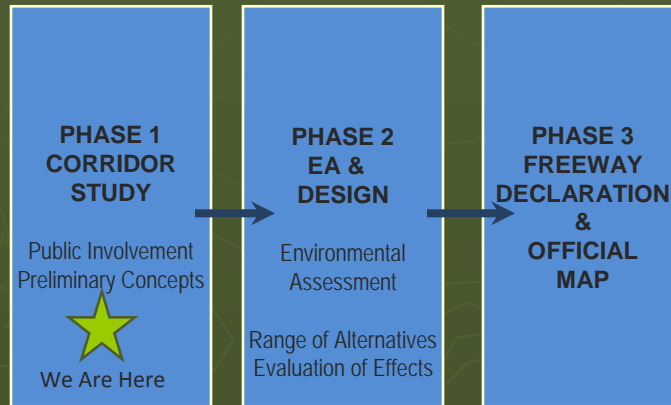
- ▶ Parmenter Interchange to WIS 19 West
- ▶ Town of Springfield, Dane County
- ▶ Total length approx. 6.3 miles

# PROJECT STUDY SCOPE, cont.

- ▶ No immediate construction plans or construction funding allocations beyond study phases
- ▶ Adhere to Wis State Statute 84.295
- ▶ Three Phase Process – concluding with officially mapping right-of-way



## PROJECT STUDY SCOPE, cont.



## OFFICIAL MAP PROCESS



## WIS. STATUTES 84.295 & OFFICIAL MAPPING

- ▶ State Statute (Wis. Stat. 84.295) authorizes WisDOT to create and update an official map for future freeways and expressways
- ▶ An official map allows WisDOT to preserve, protect, and set aside future right-of-way for US 12 where freeway design is being planned
- ▶ An official map also informs and enables landowners, the public, and local agencies to plan their future in ways that won't conflict with the future highway improvements



## WIS. STATUTES 84.295 & OFFICIAL MAPPING, cont.

- ▶ WisDOT will map and preserve land required to convert US 12 to a freeway under Wis. Statutes 84.295 including:
  - Interchanges
  - Grade separations (overpass/underpass)
  - Alterations to existing public and private access points, including driveways & field entrances
  - Alterations, removals, or additions to the local road system



## PROJECT STUDY SUMMARY

- ▶ General scope of Phase 1
  - Data collection
  - Develop conceptual alternatives for roadway modifications
  - Initial stakeholder meetings
  - Revise conceptual alternatives
  - ★ Meet with Local Officials and gather public input
  - Revise alternatives
  - Prepare report summarizing recommendations



## PROJECT STUDY SUMMARY , cont.

### ▶ Collect data:

- Demographics
- Traffic counts
- Environmentally sensitive areas
- Topography
- Prime Soils
- Community service boundaries
  - ▶ EMS, Fire, School Districts
- Existing access points
- Existing and proposed land use plans & plats
- Survey of agricultural operations within ½ mile of US 12
- Bicycle & snowmobile trails
- North Mendota Parkway



## PROJECT STUDY SUMMARY , cont.

### ▶ Initial Stakeholder Meetings

- Town of Springfield, Town Board
- Dane County
  - ▶ Highway Department
  - ▶ Land & Water Resources Department
  - ▶ Planning Department
- Madison Area MPO
- City of Middleton Planning Department
- School District & Emergency Providers
- Dane County Association of Wisconsin Snowmobile Clubs
- North Mendota Parkway Public Meetings



## STAKEHOLDER CONCERNS REGARDING FREEWAY CONVERSION

- ▶ Safety
- ▶ Traffic flow and volume
- ▶ Disruption of existing bicycle or snowmobile trails
- ▶ Access to agricultural fields
- ▶ School bus & emergency vehicle routing
- ▶ Connection with the proposed North Mendota Parkway
- ▶ Access to County Garage
- ▶ Spacing between interchanges
- ▶ Disturbance to environmentally sensitive areas
- ▶ Consideration of local comprehensive plans



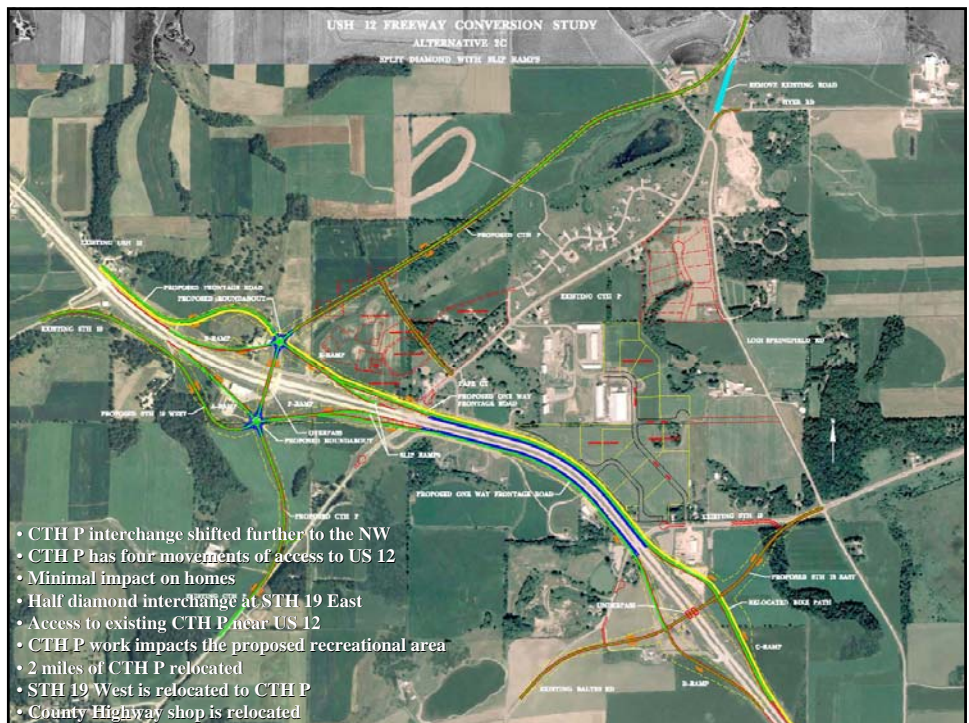
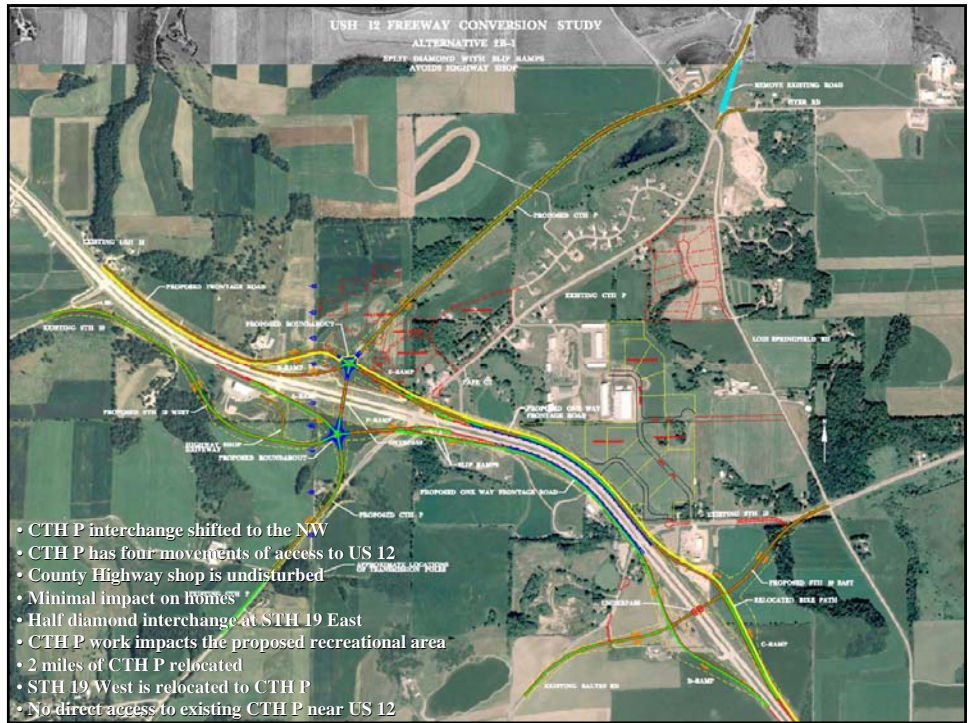
## DESIGN ALTERNATIVES

- ▶ Started with six conceptual alternatives
  - Includes a range of designs (full interchanges, split diamonds, etc.)
- ▶ Modified, combined, or eliminated based on information gathered through the initial stakeholder meetings

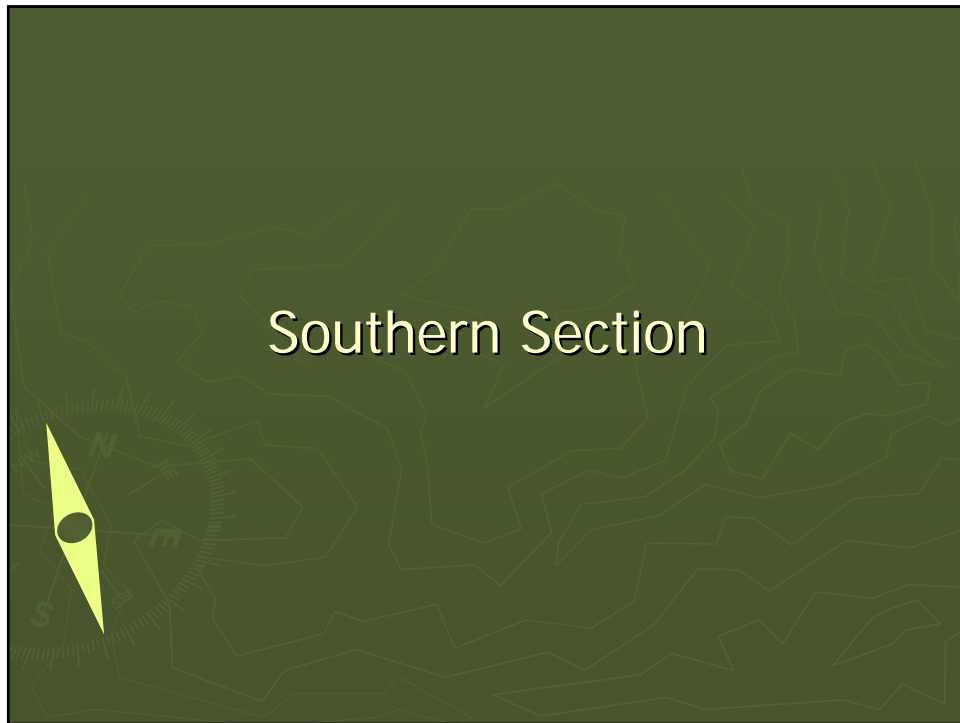




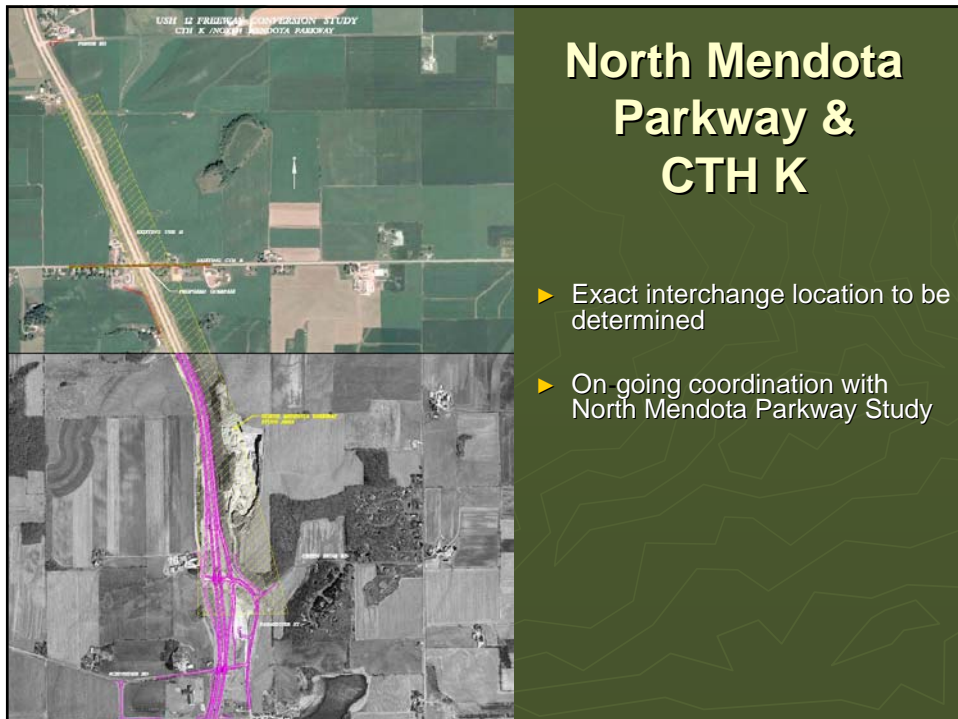




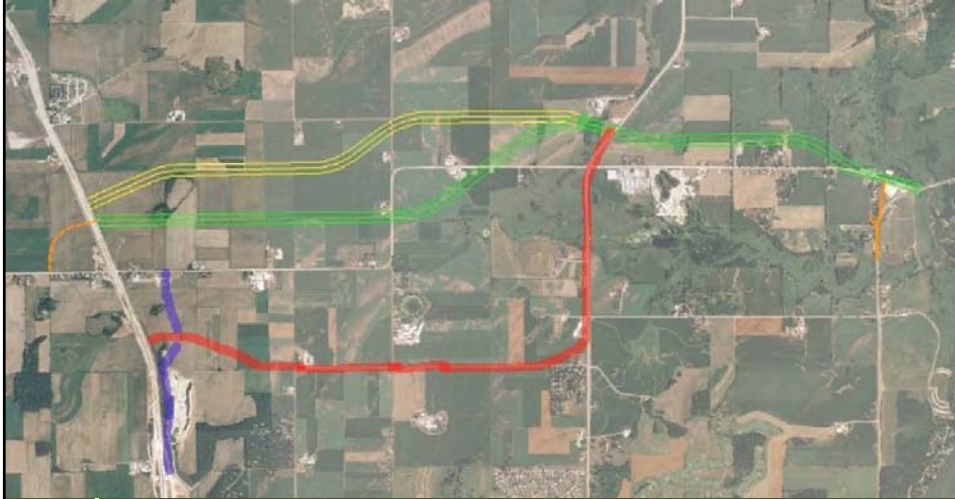




## Kickaboo & Meffert Roads



# North Mendota Parkway & CTH K



As presented 09-15 08



## PROJECT SCHEDULE

- ▶ Phase 1 - Corridor Study
  - Initiate Corridor Study Summer 2007
  - Collect data June 07 – Aug. 08
  - Design Concepts/Stakeholder Meetings Nov. 07 – Aug. 08
  - Local Officials Meeting September 23, 2008
  - Revise Design Concepts Sept. – Oct. 08
  - **Public Informational Meeting** Oct. 28, 2008
  - Summary Report Nov. 08 – Feb. 09
- ▶ Phase 2 - EA & Design Feb. 09 – Summer 2010
- ▶ Phase 3 - Official Mapping Summer - Winter 2010






# OPEN HOUSE SESSION / EXERCISE

- ▶ Exhibits of existing conditions & each alternative
- ▶ Opportunity to record input
  - Sticker and comment form
    - ▶ Place numbered sticker on map in location of desired comment
      - Use **Green** for aspects of each alternative you **favor** (i.e. alternative minimizes traffic on local road)
      - Use **Orange** for aspects of each alternative which are a **concern** (i.e. alternative may increase traffic on local road)
    - ▶ Record sticker number & color on comment form with your comment
    - ▶ Space on back of form for general comments
    - ▶ Return form to comment box



# COMMENT FORM

 **US 12 FREEWAY CONVERSION STUDY - COMMENT FORM**

Use the spaces below to provide your comments for specific locations that you identify on the map with the numbered stickers. Additional space for general comments is provided on the other side.

Sticker #	Comments
<input type="text"/>	<input type="text"/>
<input type="text"/>	<input type="text"/>
<input type="text"/>	<input type="text"/>
<input type="text"/>	<input type="text"/>
<input type="text"/>	<input type="text"/>
<input type="text"/>	<input type="text"/>
<input type="text"/>	<input type="text"/>
<input type="text"/>	<input type="text"/>
<input type="text"/>	<input type="text"/>



Place numbered sticker on map in desired location,

Write number of sticker on form in space provided,

Write your comment on the form.



Space is provided on the back for general comments.



**THANK YOU FOR COMING!**



**Public Informational Meeting:**

**Tuesday October 28<sup>th</sup> - 7:30 pm**

**Middleton High School Student Center**

**2100 Bristol Street, Middleton**

