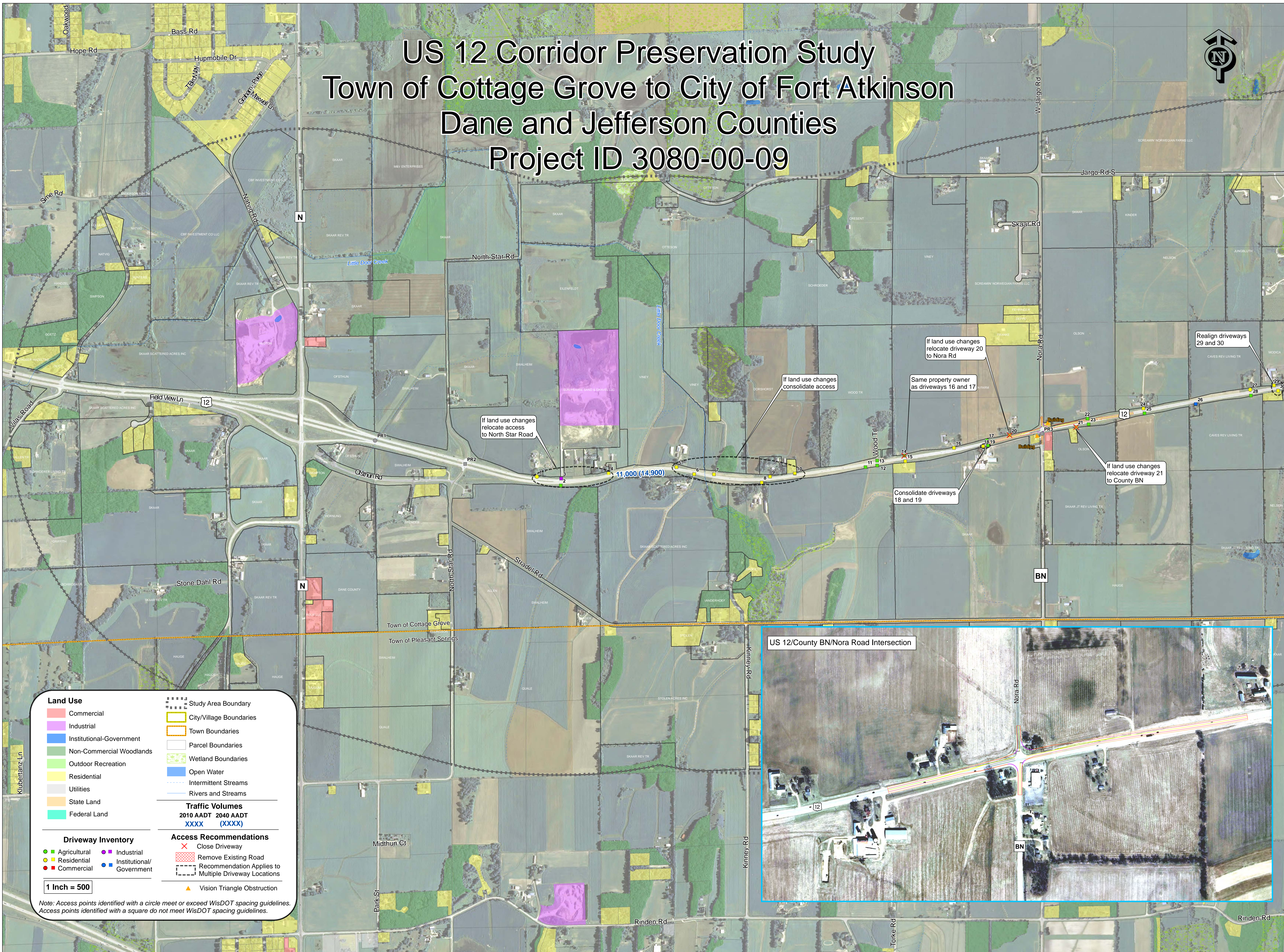


# US 12 Corridor Preservation Study

## Town of Cottage Grove to City of Fort Atkinson

### Dane and Jefferson Counties

#### Project ID 3080-00-09



Land Use		Traffic Volumes	
<span style="color: red;">■</span> Commercial	<span style="border: 1px dashed black; width: 10px; height: 10px; display: inline-block;"></span> Study Area Boundary	2010 AADT	2040 AADT
<span style="color: purple;">■</span> Industrial	<span style="border: 1px solid black; width: 10px; height: 10px; display: inline-block;"></span> City/Village Boundaries	XXXX	(XXXX)
<span style="color: blue;">■</span> Institutional-Government	<span style="border: 1px solid orange; width: 10px; height: 10px; display: inline-block;"></span> Town Boundaries		
<span style="color: green;">■</span> Non-Commercial Woodlands	<span style="border: 1px solid gray; width: 10px; height: 10px; display: inline-block;"></span> Parcel Boundaries		
<span style="color: lightgreen;">■</span> Outdoor Recreation	<span style="border: 1px dashed gray; width: 10px; height: 10px; display: inline-block;"></span> Wetland Boundaries		
<span style="color: yellow;">■</span> Residential	<span style="background-color: blue; width: 10px; height: 10px; display: inline-block;"></span> Open Water		
<span style="color: lightgray;">■</span> Utilities	<span style="border-bottom: 1px dashed gray; width: 10px; display: inline-block;"></span> Intermittent Streams		
<span style="color: orange;">■</span> State Land	<span style="border-bottom: 1px solid blue; width: 10px; display: inline-block;"></span> Rivers and Streams		
<span style="color: cyan;">■</span> Federal Land			
Driveway Inventory		Access Recommendations	
<span style="color: green;">●</span> Agricultural	<span style="color: purple;">●</span> Industrial	<span style="color: red;">✗</span> Close Driveway	<span style="background-color: red; width: 10px; height: 10px; display: inline-block;"></span> Remove Existing Road
<span style="color: yellow;">●</span> Residential	<span style="color: blue;">●</span> Institutional/Government	<span style="border: 1px dashed black; width: 10px; height: 10px; display: inline-block;"></span> Recommendation Applies to Multiple Driveway Locations	
<span style="color: red;">●</span> Commercial		<span style="color: orange;">▲</span> Vision Triangle Obstruction	

Note: Access points identified with a circle meet or exceed WisDOT spacing guidelines. Access points identified with a square do not meet WisDOT spacing guidelines.

