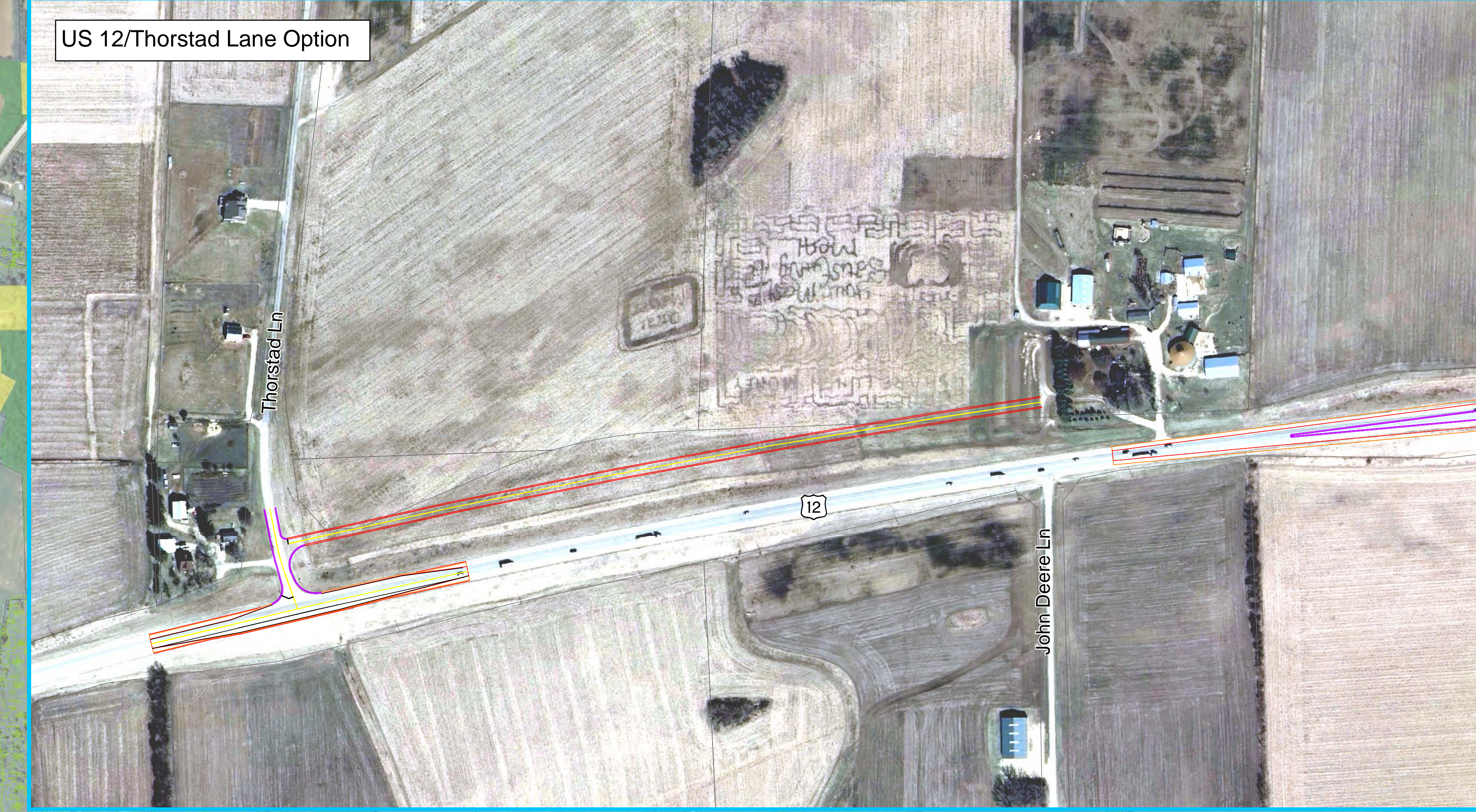


US 12 Corridor Preservation Study

Town of Cottage Grove to City of Fort Atkinson

Dane and Jefferson Counties

Project ID 3080-00-09



Land Use	
■	Commercial
■	Industrial
■	Institutional-Government
■	Non-Commercial Woodlands
■	Outdoor Recreation
■	Residential
■	Utilities
■	State Land
■	Federal Land

	Study Area Boundary
	City/Village Boundaries
	Town Boundaries
	Parcel Boundaries
	Wetland Boundaries
■	Open Water
—	Intermittent Streams
—	Rivers and Streams

Traffic Volumes	
XXXX	2010 AADT
(XXXX)	2040 AADT

Driveway Inventory	
●	Agricultural
●	Residential
●	Commercial
●	Industrial
●	Institutional/Government

Access Recommendations	
X	Close Driveway
	Remove Existing Road
	Recommendation Applies to Multiple Driveway Locations
▲	Vision Triangle Obstruction

1 Inch = 500

Note: Access points identified with a circle meet or exceed WisDOT spacing guidelines. Access points identified with a square do not meet WisDOT spacing guidelines.