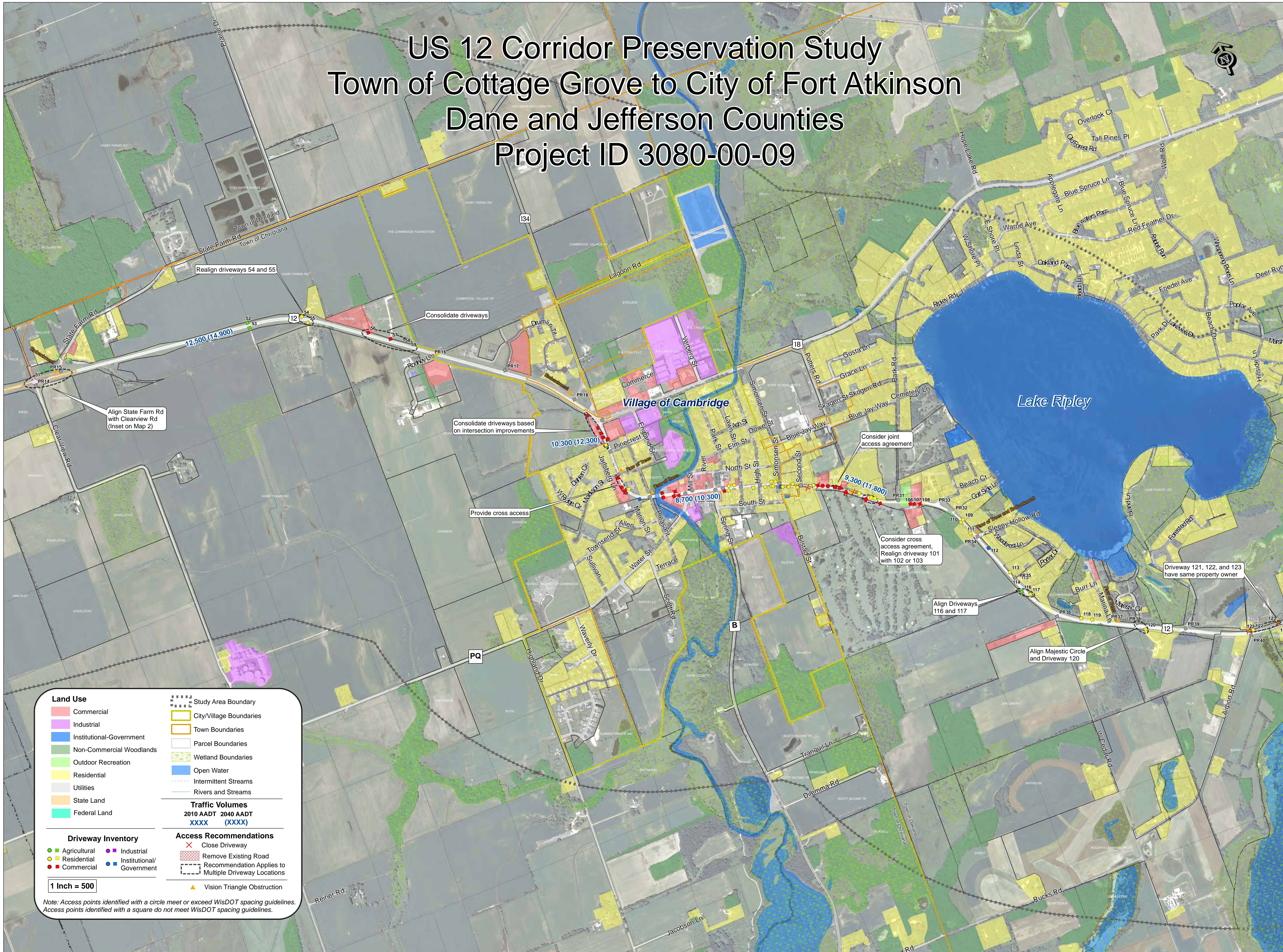


US 12 Corridor Preservation Study

Town of Cottage Grove to City of Fort Atkinson

Dane and Jefferson Counties

Project ID 3080-00-09



Land Use		Traffic Volumes	
■ Commercial	 Study Area Boundary	2010 AADT	2040 AADT
■ Industrial	 City/Village Boundaries	XXXX	(XXXX)
■ Institutional-Government	 Town Boundaries		
■ Non-Commercial Woodlands	 Parcel Boundaries		
■ Outdoor Recreation	 Wetland Boundaries		
■ Residential	■ Open Water		
■ Utilities	— Intermittent Streams		
■ State Land	— Rivers and Streams		
■ Federal Land			

Driveway Inventory		Access Recommendations	
● Agricultural	● Industrial	X Close Driveway	 Remove Existing Road
● Residential	● Institutional/Government	 Recommendation Applies to Multiple Driveway Locations	
● Commercial		▲ Vision Triangle Obstruction	

1 Inch = 500

Note: Access points identified with a circle meet or exceed WisDOT spacing guidelines. Access points identified with a square do not meet WisDOT spacing guidelines.