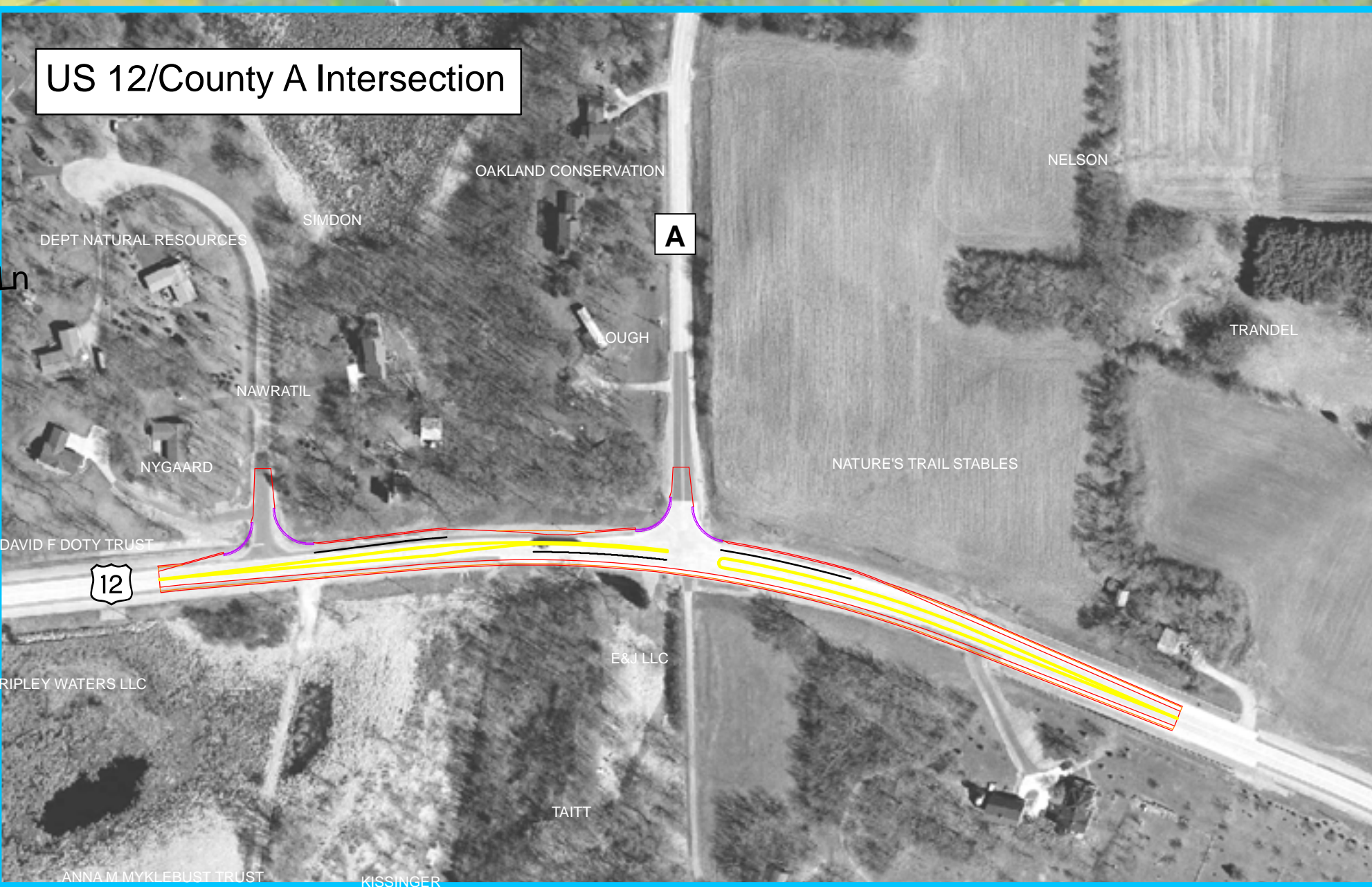
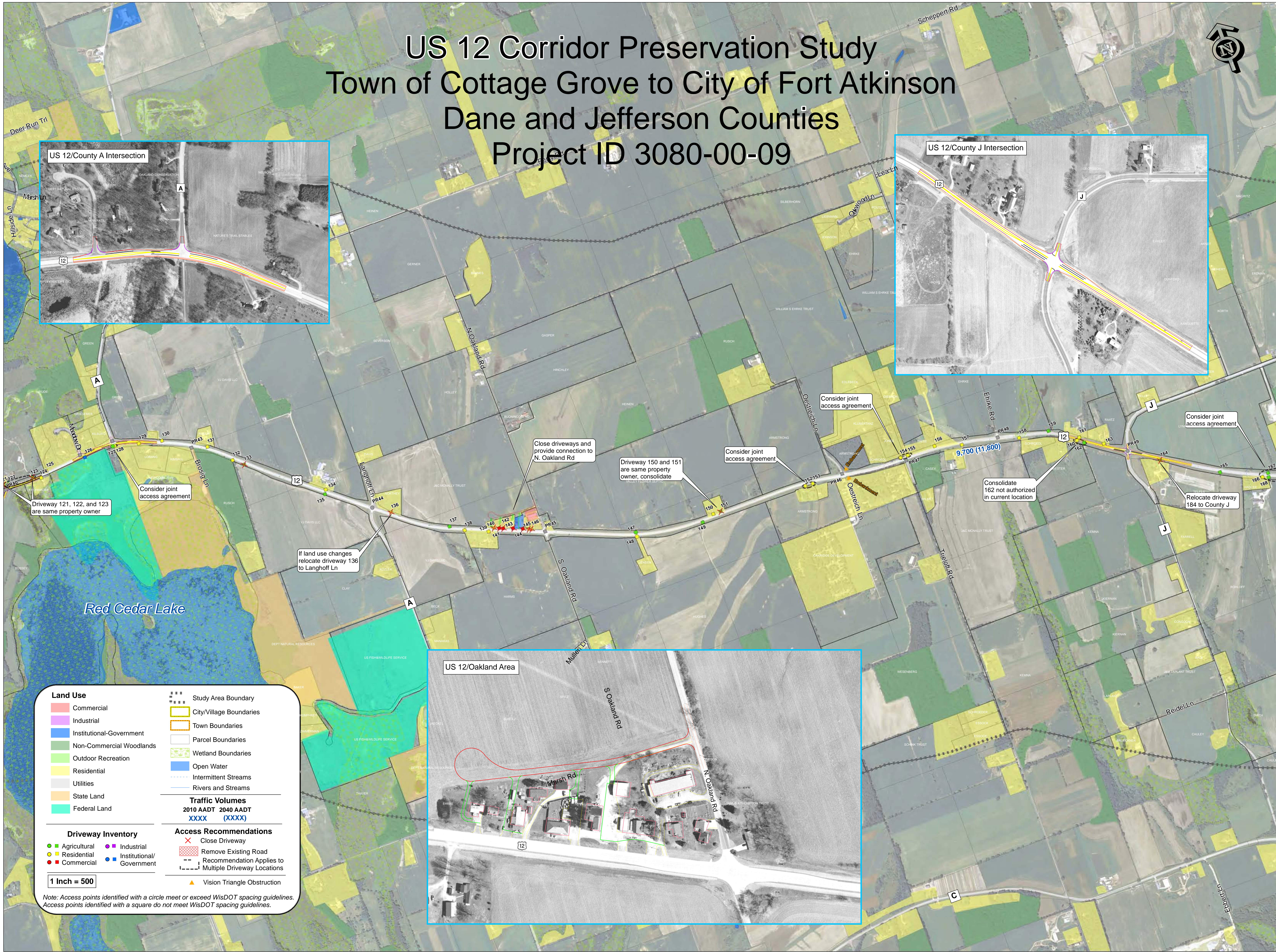


# US 12 Corridor Preservation Study Town of Cottage Grove to City of Fort Atkinson Dane and Jefferson Counties Project ID 3080-00-09



Land Use	
<span style="color: red;">■</span> Commercial	<span style="border: 1px dashed black; padding: 2px;"> </span> Study Area Boundary
<span style="color: purple;">■</span> Industrial	<span style="border: 1px solid black; padding: 2px;"> </span> City/Village Boundaries
<span style="color: blue;">■</span> Institutional-Government	<span style="border: 1px solid orange; padding: 2px;"> </span> Town Boundaries
<span style="color: green;">■</span> Non-Commercial Woodlands	<span style="border: 1px solid grey; padding: 2px;"> </span> Parcel Boundaries
<span style="color: lightgreen;">■</span> Outdoor Recreation	<span style="border: 1px solid green; padding: 2px;"> </span> Wetland Boundaries
<span style="color: yellow;">■</span> Residential	<span style="color: blue;">■</span> Open Water
<span style="color: lightblue;">■</span> Utilities	<span style="color: blue;">—</span> Intermittent Streams
<span style="color: orange;">■</span> State Land	<span style="color: blue;">—</span> Rivers and Streams
<span style="color: cyan;">■</span> Federal Land	
Traffic Volumes	
2010 AADT	2040 AADT
XXXX	(XXXX)
Driveway Inventory	
<span style="color: green;">●</span> Agricultural	<span style="color: purple;">●</span> Industrial
<span style="color: yellow;">●</span> Residential	<span style="color: blue;">●</span> Institutional/Government
<span style="color: red;">●</span> Commercial	
1 Inch = 500	
Access Recommendations	
<span style="color: red;">X</span> Close Driveway	<span style="border: 1px solid red; padding: 2px;"> </span> Remove Existing Road
<span style="border: 1px dashed black; padding: 2px;"> </span> Recommendation Applies to Multiple Driveway Locations	<span style="color: orange;">▲</span> Vision Triangle Obstruction

Note: Access points identified with a circle meet or exceed WisDOT spacing guidelines. Access points identified with a square do not meet WisDOT spacing guidelines.