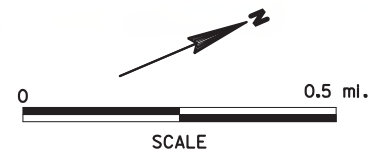


LEGEND			
	POTENTIAL INTERCHANGE ALLOWED		ACCESS REMOVAL
	POTENTIAL INTERCHANGE NOT ALLOWED		TYPE Residential
	EXISTING INTERCHANGE		Agricultural
	EXISTING GRADE SEPARATION		Commercial
	PROPOSED ROADWAY		Utility
	PROPOSED CUL-DE-SAC		Cemetery
	PROPOSED STRUCTURE		
	OBLITERATE ROADWAY		
	APPROXIMATE WETLAND BOUNDARY		POTENTIAL RELOCATION
	HISTORICAL BUILDING		APPROXIMATE WETLAND INTER-BOUNDARY DIVISION & TYPE

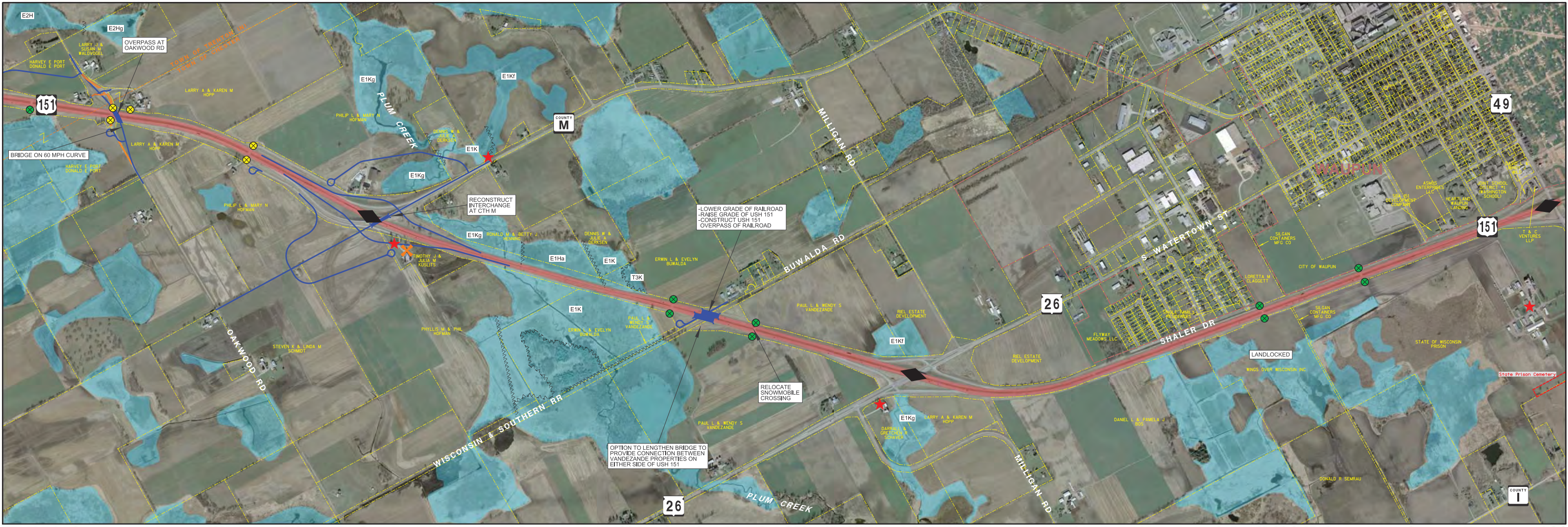
US 151 FREEWAY STUDY PRELIMINARY CONCEPTS - ALTERNATIVE 7A -

**PROPOSED INTERCHANGE - PARTIAL CLOVERLEAF AT REDWOOD ROAD, CTH M
PROPOSED OVERPASS AT BREEZY POINT ROAD, CTH C, OAKWOOD ROAD**



PROJECT ID: 1110-00-09
COLUMBUS TO WAUPUN
DODGE COUNTY

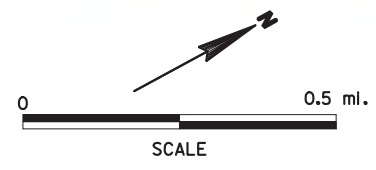




LEGEND					
	POTENTIAL INTERCHANGE ALLOWED		PROPOSED ROADWAY		ACCESS REMOVAL TYPE Residential
	POTENTIAL INTERCHANGE NOT ALLOWED		PROPOSED CUL-DE-SAC		Agricultural
	EXISTING INTERCHANGE		PROPOSED STRUCTURE		Commercial
	EXISTING GRADE SEPARATION		OBLITERATE ROADWAY		Utility
	APPROXIMATE WETLAND BOUNDARY		POTENTIAL RELOCATION		Cemetery
	HISTORICAL BUILDING		APPROXIMATE WETLAND INTER-BOUNDARY DIVISION & TYPE		

US 151 FREEWAY STUDY PRELIMINARY CONCEPTS - ALTERNATIVE 7A -

**PROPOSED INTERCHANGE - PARTIAL CLOVERLEAF AT REDWOOD ROAD, CTH M
PROPOSED OVERPASS AT BREEZY POINT ROAD, CTH C, OAKWOOD ROAD**



PROJECT ID: 1110-00-09
COLUMBUS TO WAUPUN
DODGE COUNTY



AVRES ASSOCIATES