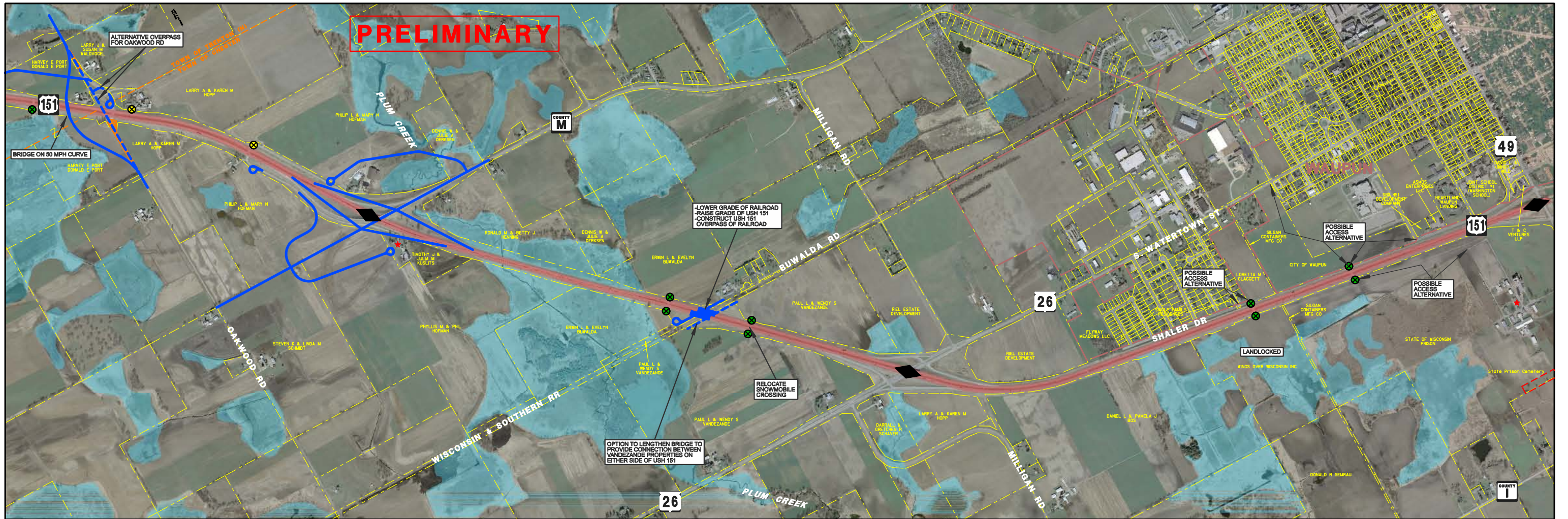


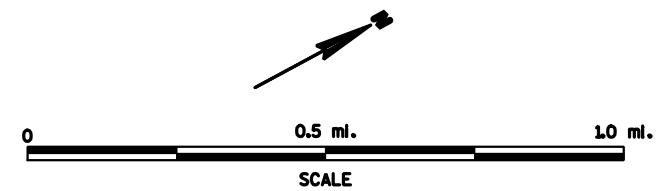
**PRELIMINARY**



LEGEND			
	POTENTIAL INTERCHANGE ALLOWED		PROPOSED ROADWAY
	POTENTIAL INTERCHANGE NOT ALLOWED		PROPOSED CUL-DE-SAC
	EXISTING INTERCHANGE		PROPOSED STRUCTURE
	EXISTING GRADE SEPARATION		DESIGN ALTERNATIVE
	APPROXIMATE WETLAND BOUNDARY		OBLITERATE ROADWAY
	HISTORICAL BUILDING		ACCESS REMOVAL
			TYPE Residential
			Agricultural
			Commercial
			Utility
			Cemetery

**US 151 FREEWAY STUDY  
PRELIMINARY CONCEPTS**

PROJECT ID: 1110-00-09  
COLUMBUS TO WAUPUN  
DODGE COUNTY  
(SHEET 5 OF 5)



**AVRES**  
ASSOCIATES