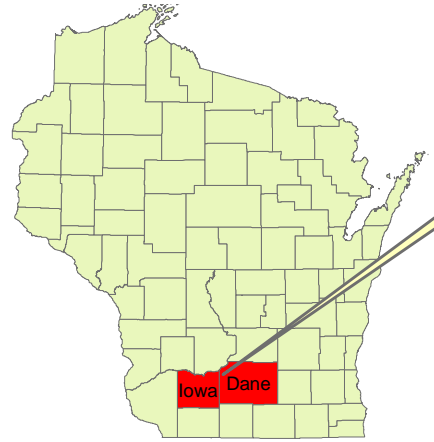
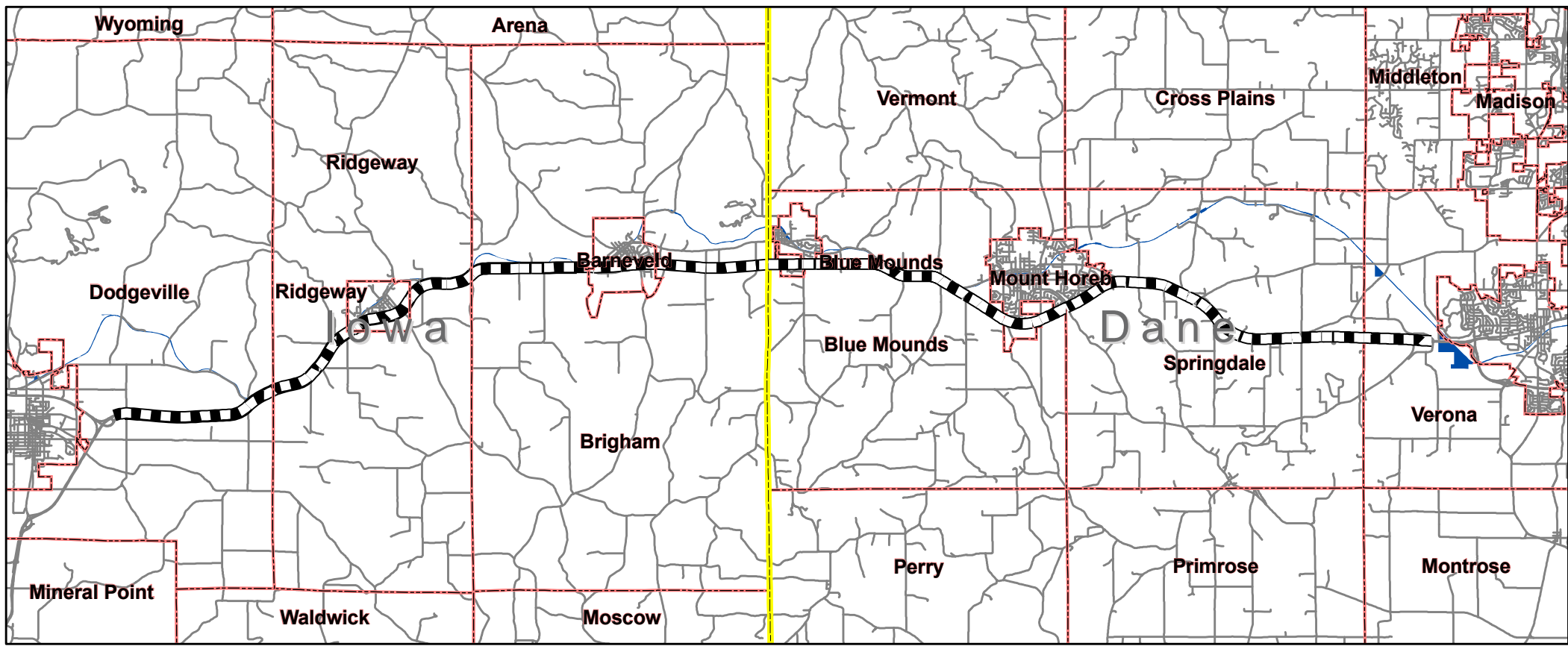


List of Exhibits






- Exhibit 1 Project Location Map**
- Exhibit 2 MRST Overview Map**
- Exhibit 3 Preferred Alternatives, Section 1-6**
- Exhibit 4 MRST Proposed Relocations**
- Exhibit 5 WDNR Correspondence**

Exhibit 1 Project Location Map



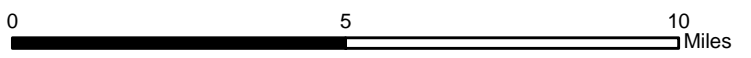
Study Location

Legend

-  US 18/151 Study Corridor
-  Roads
-  Dane/Iowa County Boundary
-  Municipal Boundary
-  Military Ridge Trail Right-of-Way



US 18/151 FREEWAY CONVERSION PLAN
 DODGEVILLE TO VERONA
 WisDOT ID: 1200-08-00



STUDY LOCATION MAP

EXHIBIT 1

Exhibit 2 MRST Overview Map

Military Ridge State Trail

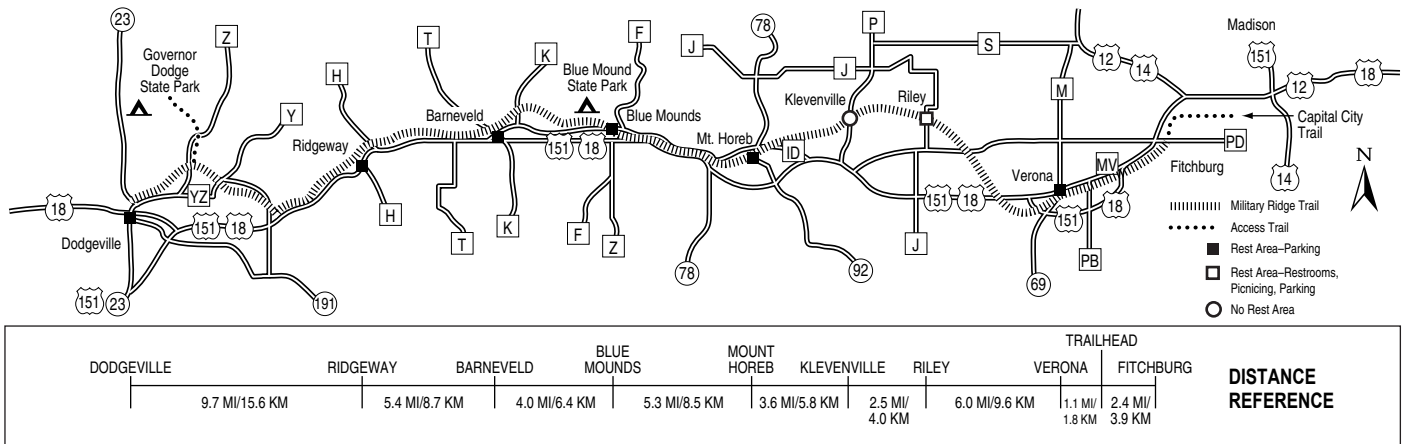
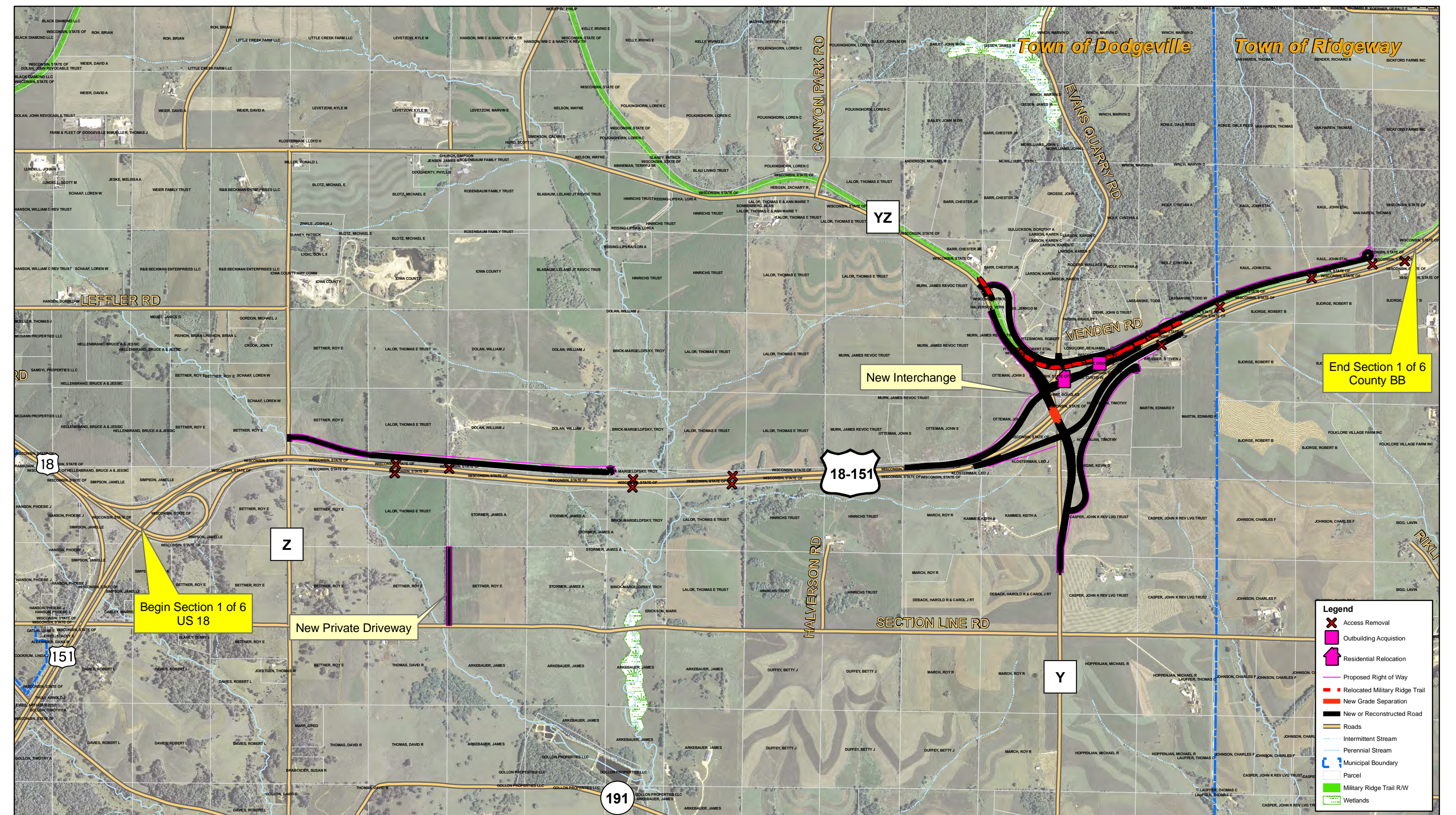


Exhibit 3 Preferred Alternatives, Section 1-6



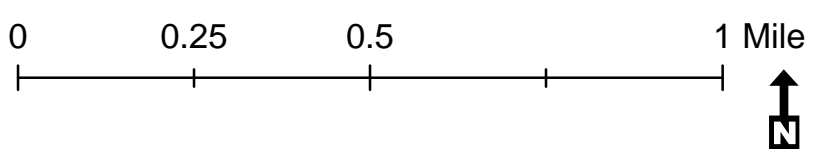
End Section 1 of 6 County BB

Begin Section 1 of 6 US 18

New Interchange

New Private Driveway

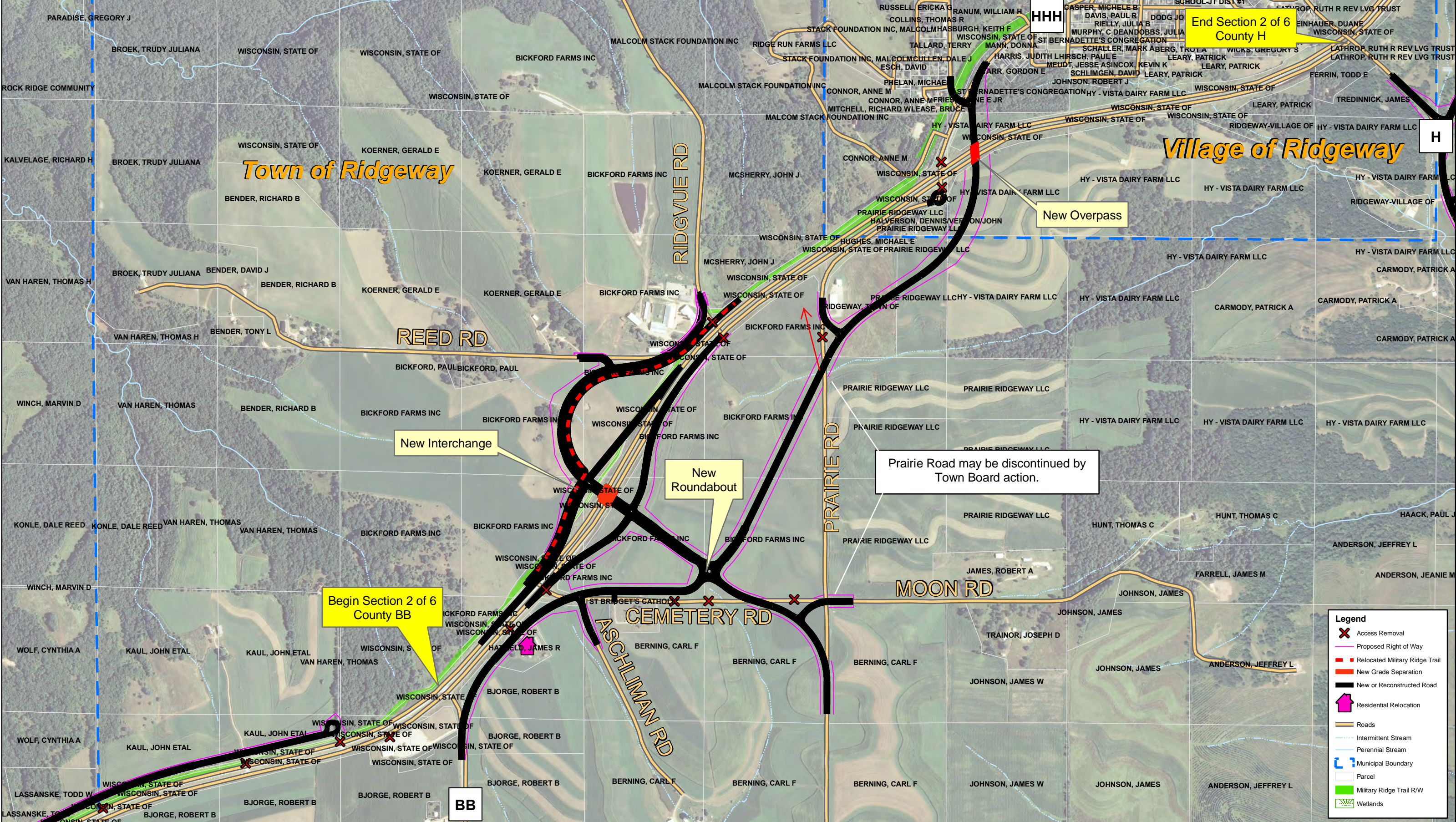

- Legend**
- Access Removal
 - Outbuilding Acquisition
 - Residential Relocation
 - Proposed Right of Way
 - Relocated Military Ridge Trail
 - New Grade Separation
 - New or Reconstructed Road
 - Roads
 - Intermittent Stream
 - Perennial Stream
 - Municipal Boundary
 - Parcel
 - Military Ridge Trail R/W
 - Wetlands




US 18/151 FREEWAY CONVERSION PLAN
 DODGEVILLE TO VERONA
 WisDOT ID: 1200-08-00
 Map Date: December 2012

PREFERRED ALTERNATIVE (DETAIL)
 1B
 US 18 TO COUNTY BB

EXHIBIT 3
 1 OF 6

0 0.25 0.5 Mile
















US 18/151 FREEWAY CONVERSION PLAN
 DODGEVILLE TO VERONA
 WisDOT ID: 1200-08-00
 Map Date: December 2012

PREFERRED ALTERNATIVE (DETAIL)
 2B
 COUNTY BB TO COUNTY H

EXHIBIT 3
 2 OF 6

Legend

-  Access Removal
-  Proposed Right of Way
-  Relocated Military Ridge Trail
-  New Grade Separation
-  New or Reconstructed Road
-  Residential Relocation
-  Roads
-  Intermittent Stream
-  Perennial Stream
-  Municipal Boundary
-  Parcel
-  Military Ridge Trail R/W
-  Wetlands



Begin Section 3 of 6 County H

West section of Rock Road may be discontinued by Town Board action.

Note: Symbols for cul de sacs were inadvertently omitted on EA map

End Section 3 of 6 County K

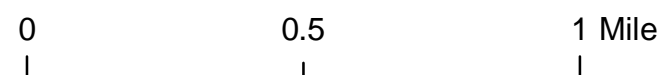
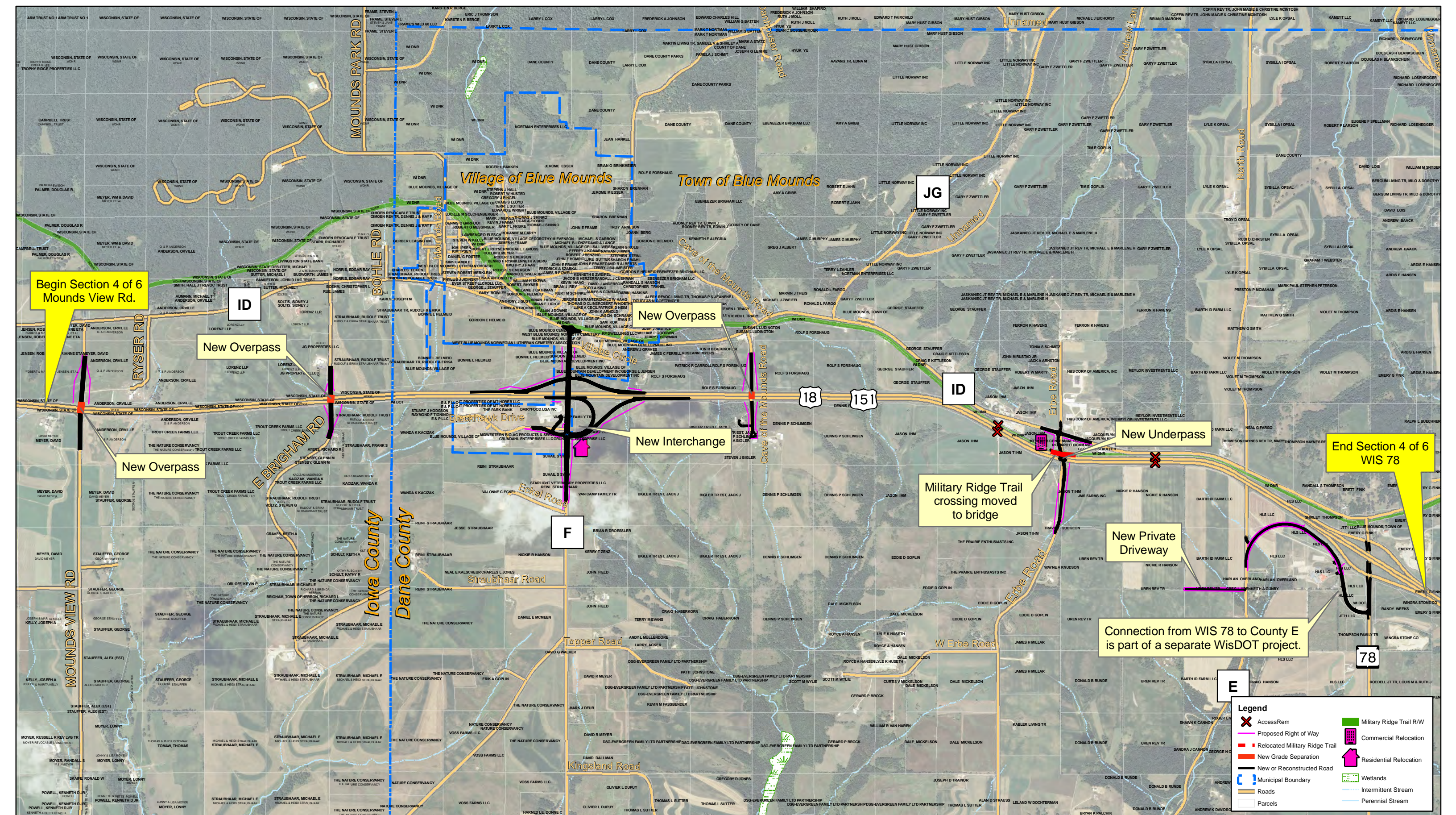
Legend	
	Access Removal
	Residential Relocation
	Relocated Military Ridge Trail
	New or Reconstructed Road
	Cul-de-sac
	Municipal Boundary
	Parcel
	Military Ridge Trail R/W
	Intermittent Stream
	Perennial Stream
	Wetlands

0 0.5 1 Mile

US 18/151 FREEWAY CONVERSION PLAN
DODGEVILLE TO VERONA
WisDOT ID: 1200-08-00

PREFERRED ALTERNATIVE (DETAIL)
3B
COUNTY H TO COUNTY K

EXHIBIT 3
3 OF 6

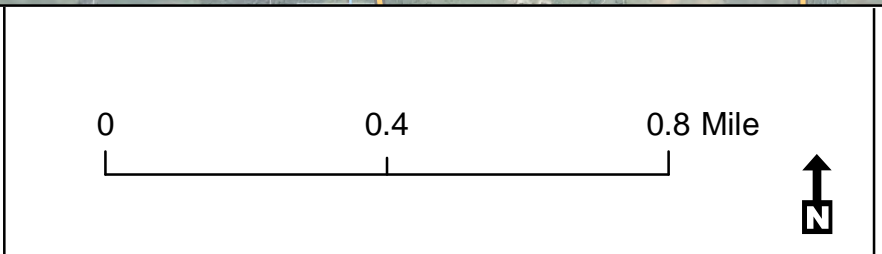
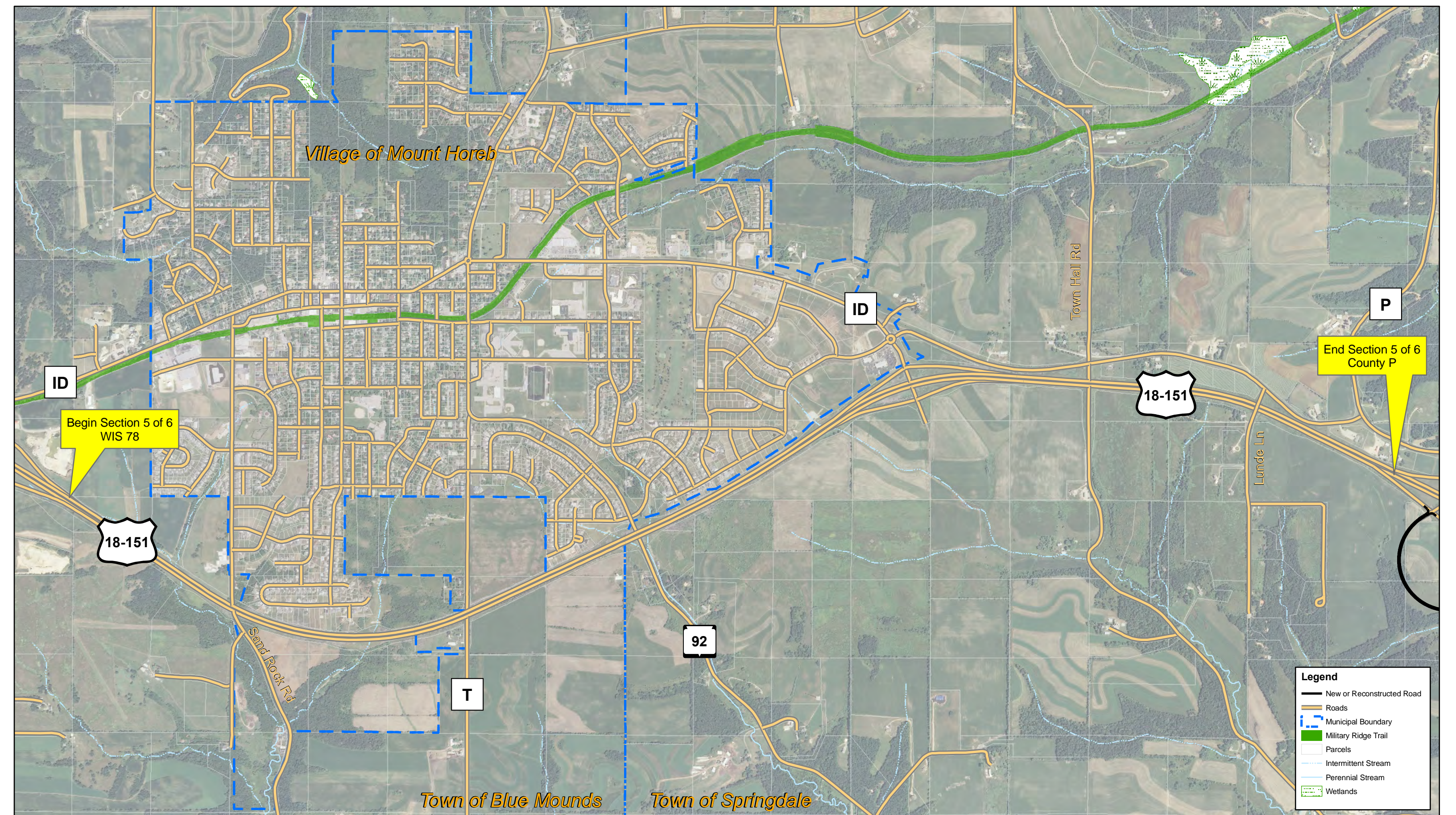


US 18/151 FREEWAY CONVERSION PLAN
 DODGEVILLE TO VERONA
 WisDOT ID: 1200-08-00
 Map Date: December 2012

PREFERRED ALTERNATIVE (DETAIL)
 4A
 MOUNDS VIEW RD. TO WIS 78

EXHIBIT 3
 4 OF 6

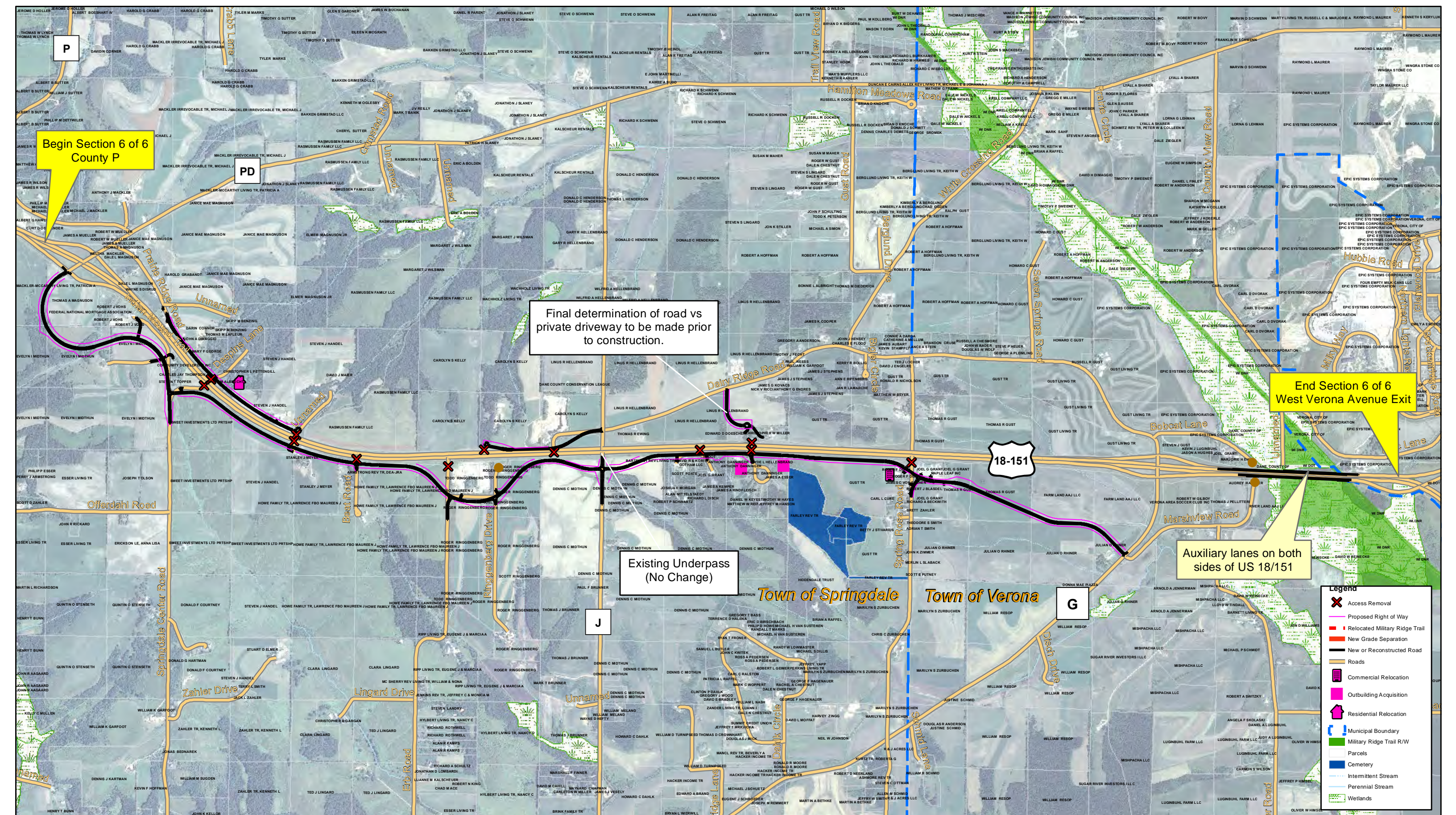
Legend	
	AccessRem
	Proposed Right of Way
	Relocated Military Ridge Trail
	New Grade Separation
	New or Reconstructed Road
	Municipal Boundary
	Roads
	Parcels
	Military Ridge Trail R/W
	Commercial Relocation
	Residential Relocation
	Wetlands
	Intermittent Stream
	Perennial Stream



US 18/151 FREEWAY CONVERSION PLAN
 DODGEVILLE TO VERONA
 WisDOT ID: 1200-08-00
 Map Date: December 2012

PREFERRED ALTERNATIVE (DETAIL)
 5 - NO CHANGE TO EXISTING CONDITIONS
 WIS 78 TO COUNTY P

EXHIBIT 3
 5 OF 6



0 0.5 1 Mile

US 18/151 FREEWAY CONVERSION PLAN
 DODGEVILLE TO VERONA
 WisDOT ID: 1200-08-00
 Map Date: December 2012

PREFERRED ALTERNATIVE (DETAIL)
 6B
 COUNTY P TO W. VERONA AVE. EXIT

EXHIBIT 3
 6 OF 6

Legend

- Access Removal
- Proposed Right of Way
- Relocated Military Ridge Trail
- New Grade Separation
- New or Reconstructed Road
- Roads
- Commercial Relocation
- Outbuilding Acquisition
- Residential Relocation
- Municipal Boundary
- Military Ridge Trail R/W
- Parcels
- Cemetery
- Intermittent Stream
- Perennial Stream
- Wetlands