

TRAFFIC FORECAST REPORT

PROJECT ID(S): 1200-08-00

ROUTE(S): USH 18/151

Region/COUNTY(IES): SW / Dane

LOCATION: Verona to Mt Horeb

COMPLETED: 2/21/2013

No-Build

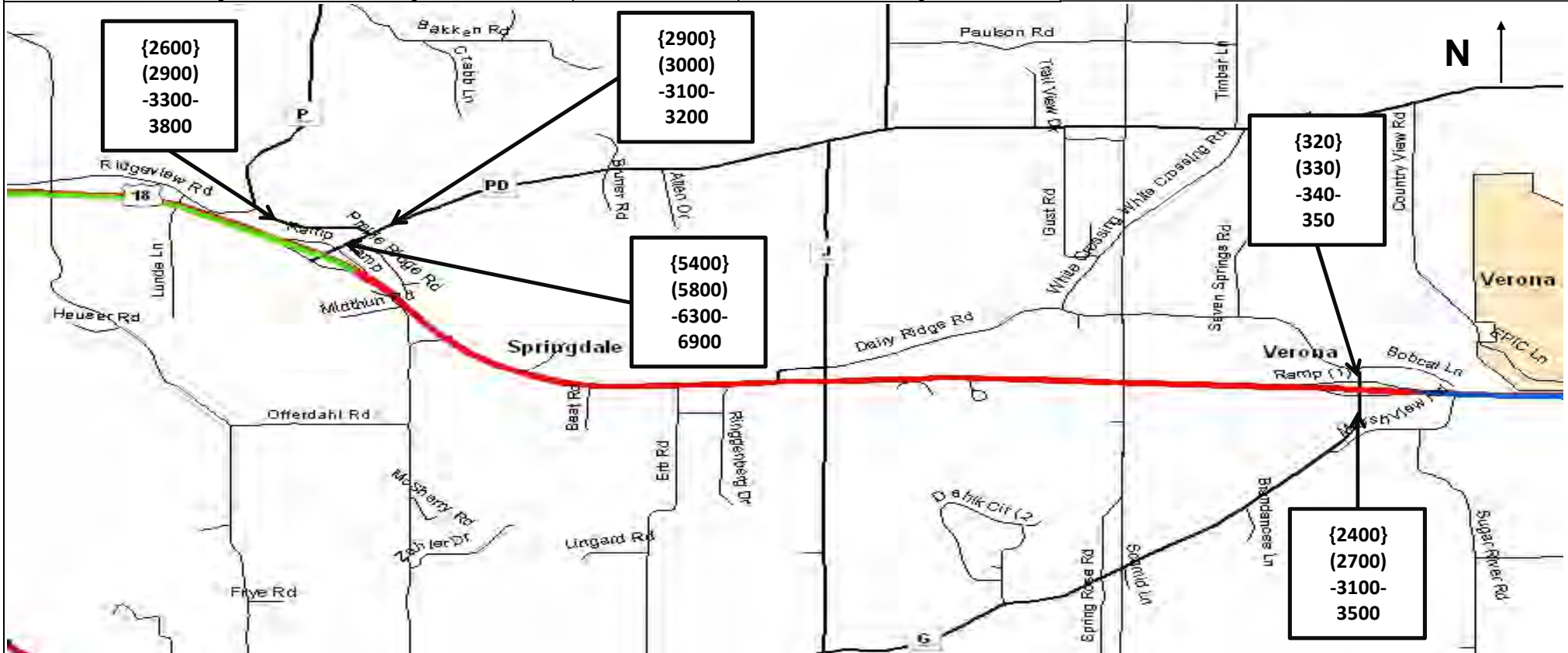
Developed by: Mike Sillence

Phone : (608) 266-3322

FAX #: (608) 267-1856

E-Mail ID:mike.sillence@dot.wi.gov

Traffic Forecasting Section; Bureau of Planning and Economic Development; Division of Transportation Investment Management



Design Values (%)			
Routes →	USH		
18/151			
Design Volume(s):	38000	--	--
K250	9.5	--	--
K100	9.9	--	--
K30	10.8	--	--
T(DHV)	6.6	--	--
D(Dsgn. Hr.)	60/40	--	--
K8(ADT)	--	--	--
T(A8HV)	--	--	--

Last Count/Forecast Years:			
{000}	2009	Count	
(000)	2017	AADT	
-000-	2027	AADT	
000	2037	AADT	
Truck Class %'s			
Class	Seg. 1	Seg. 2	Seg. 3
2D	3.0	--	--
3AX	1.3	--	--
2S1+2S2	1.2	--	--
3-S2	3.5	--	--
DBL-BTM	0.2	--	--
TOTAL	9.2%	--	--

NOTES ON THE FORECAST:

1. This projection assumes that no major new traffic generators will be added to the development already included in the travel demand model.
2. Truck classification percentages were taken from a table representative of similar facilities and locations throughout the state of Wisconsin.

MORE NOTES ON THE FORECAST:

3. USH 18 is a factor group IV (rural-other) highway (indicating low to moderate fluctuation in traffic from a seasonal perspective). It is functionally classified as a rural principal arterial (2) for count purposes.
4. The Dane County Travel Demand Model was used to complete this forecast. The Traffic Analysis Forecasting Information System output was used as a comparison tool to check against the model output. Adjustments were made as needed.

TRAFFIC FORECAST REPORT

PROJECT ID(S): 1200-08-00

ROUTE(S): USH 18/151

Region/COUNTY(IES): SW / Dane

LOCATION: Verona to Mt Horeb

COMPLETED: 10/08/2012

Build

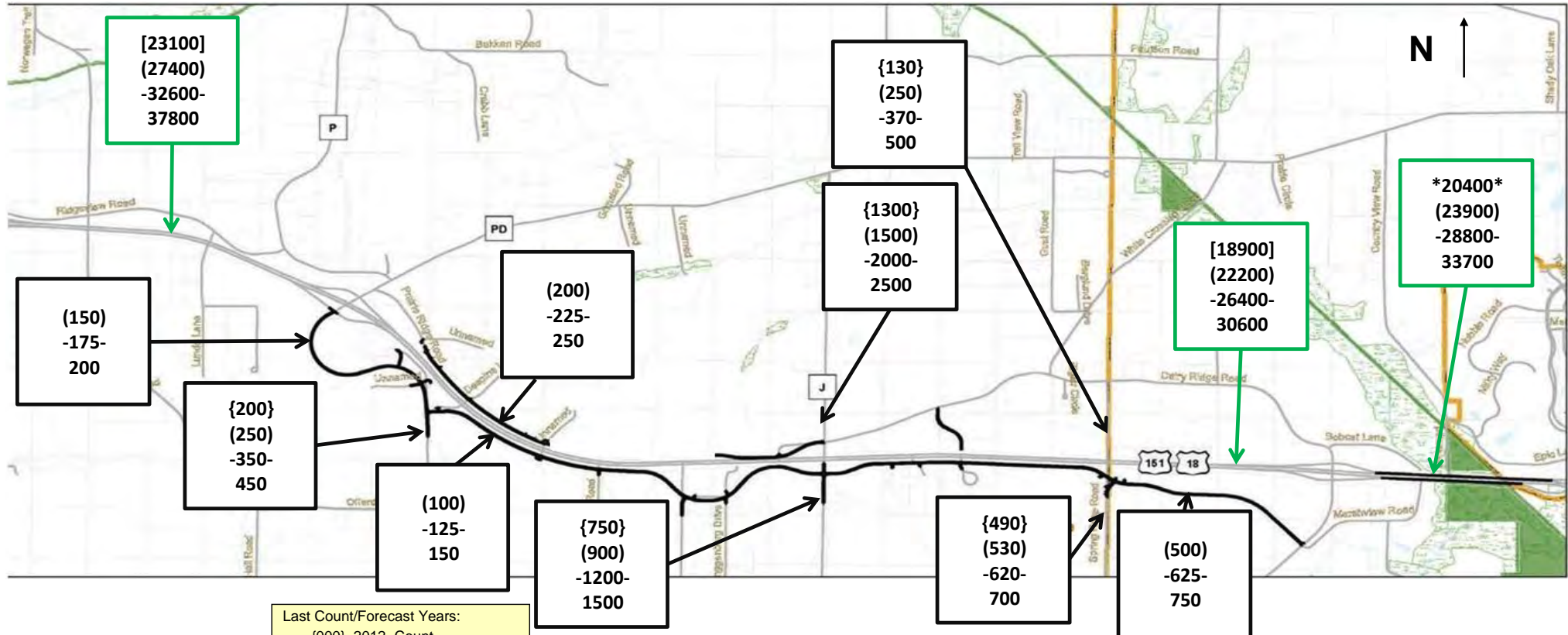
Developed by: Mike Sillence

Phone : (608) 266-3322

FAX #: (608) 267-1856

E-Mail ID:mike.sillence@dot.wi.gov

Traffic Forecasting Section; Bureau of Planning and Economic Development; Division of Transportation Investment Management



Last Count/Forecast Years:

{000}	2012 Count
000	2010 Count
[000]	2009 Count
(000)	2017 AADT
-000-	2027 AADT
000	2037 AADT

Truck Class %'s

Class	Seg. 1	Seg. 2	Seg. 3
2D	3.0	--	--
3AX	1.3	--	--
2S1+2S2	1.2	--	--
3-S2	3.5	--	--
DBL-BTM	0.2	--	--
TOTAL	9.2%	--	--

Design Values (%)

Routes	USH		
Design	18/151		
Volume(s):	38000	--	--
K250	9.5	--	--
K100	9.9	--	--
K30	10.8	--	--
T(DHV)	6.6	--	--
D(Dsgn. Hr.)	60/40	--	--
K8(ADT)	--	--	--
T(A8HV)	--	--	--

NOTES ON THE FORECAST:

1. This projection assumes that the service roads depicted above in black will be built in 2017.
2. Truck classification percentages were taken from a table representative of similar facilities and locations throughout the state of Wisconsin.

MORE NOTES ON THE FORECAST:

3. USH 151 is a factor group IV (rural-other) highway (indicating low to moderate fluctuation in traffic from a seasonal perspective). It is functionally classified as a rural principal arterial (2) for count purposes.
4. The Dane County Travel Demand Model was used to complete this forecast. The Traffic Analysis Forecasting Information System output was used as a comparison tool to check against the model output. Adjustments were made as needed.

TRAFFIC FORECAST REPORT

PROJECT ID(S): 1200-08-00

ROUTE(S): USH 18/151

Region/COUNTY(IES): SW / Dane

LOCATION: Mt Horeb to Iowa County

COMPLETED: 10/08/2012

No-Build

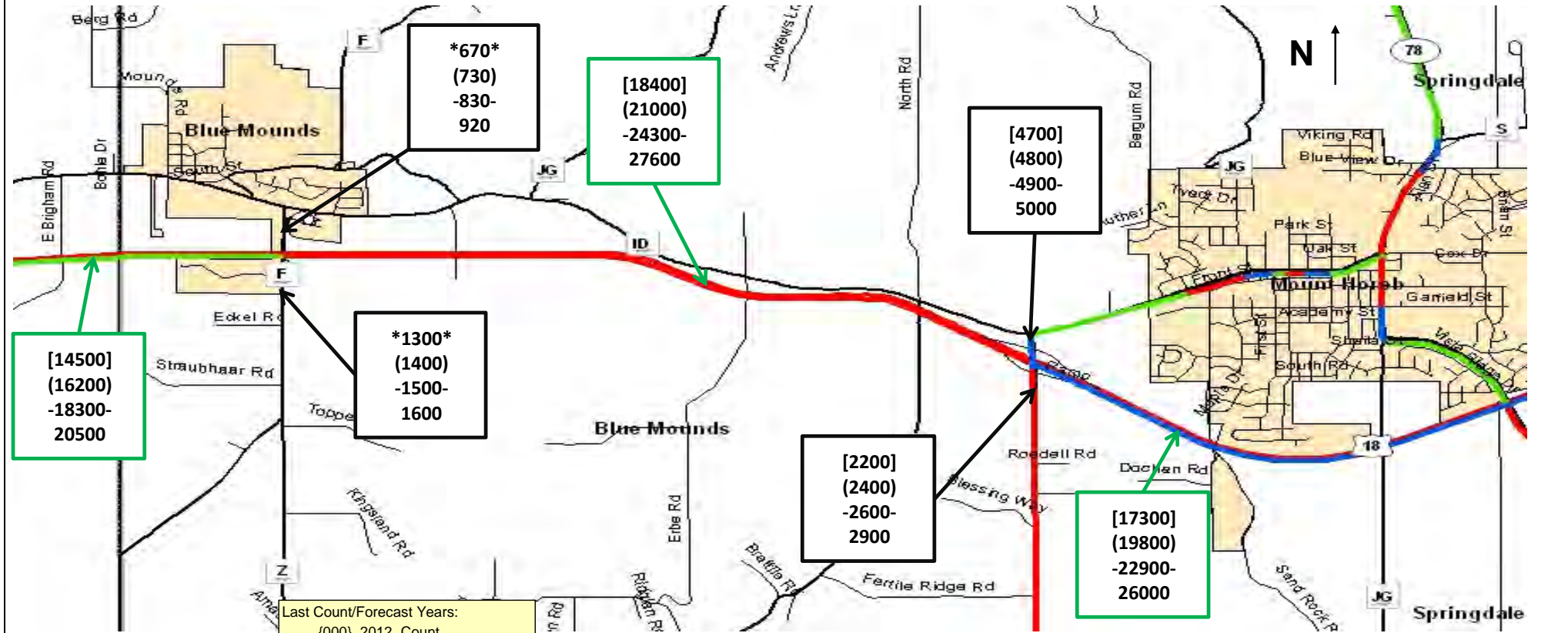
Developed by: Mike Sillence

Phone : (608) 266-3322

FAX #: (608) 267-1856

E-Mail ID:mike.sillence@dot.wi.gov

Traffic Forecasting Section; Bureau of Planning and Economic Development; Division of Transportation Investment Management



Last Count/Forecast Years:

{000}	2012 Count
000	2010 Count
[000]	2009 Count
(000)	2017 AADT
-000-	2027 AADT
000	2037 AADT

Design Values (%)			
Routes	→	USH	
Design	→	18/151	
Design Volume(s):		38000	--
K250		9.5	--
K100		9.9	--
K30		10.8	--
T(DHV)		6.6	--
D(Dsgn. Hr.)		60/40	--
K8(ADT)		--	--
T(A8HV)		--	--

Truck Class %'s			
Class	Seg. 1	Seg. 2	Seg. 3
2D	3.0	--	--
3AX	1.3	--	--
2S1+2S2	1.2	--	--
3-S2	3.5	--	--
DBL-BTM	0.2	--	--
TOTAL	9.2%	--	--

NOTES ON THE FORECAST:

1. This projection assumes that no major new traffic generators will be added to the development already included in the travel demand model.
2. Truck classification percentages were taken from a table representative of similar facilities and locations throughout the state of Wisconsin.

MORE NOTES ON THE FORECAST:

3. USH 151 is a factor group IV (rural-other) highway (indicating low to moderate fluctuation in traffic from a seasonal perspective). It is functionally classified as a rural principal arterial (2) for count purposes.
4. The Dane County Travel Demand Model was used to complete this forecast. The Traffic Analysis Forecasting Information System output was used as a comparison tool to check against the model output. Adjustments were made as needed.

TRAFFIC FORECAST REPORT

PROJECT ID(S): 1200-08-00

ROUTE(S): USH 18/151

Region/COUNTY(IES): SW / Dane

LOCATION: Mt Horeb to Iowa County

COMPLETED: 10/08/2012

Build

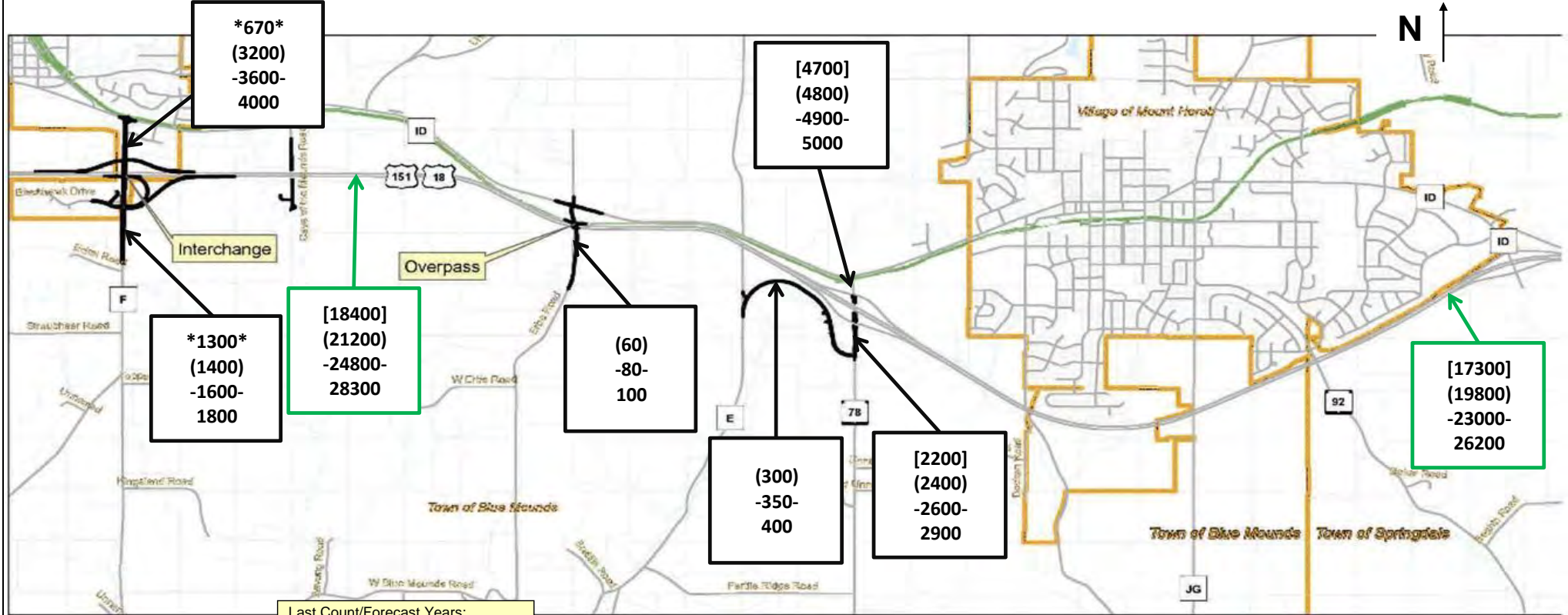
Developed by: Mike Sillence

Phone : (608) 266-3322

FAX #: (608) 267-1856

E-Mail ID:mike.sillence@dot.wi.gov

Traffic Forecasting Section; Bureau of Planning and Economic Development; Division of Transportation Investment Management



Design Values (%)			
Routes	USH		
Design	18/151		
Volume(s):	38000	--	--
K250	9.5	--	--
K100	9.9	--	--
K30	10.8	--	--
T(DHV)	6.6	--	--
D(Dsgn. Hr.)	60/40	--	--
K8(ADT)	--	--	--
T(A8HV)	--	--	--

Last Count/Forecast Years:			
{000}	2012	Count	
000	2010	Count	
[000]	2009	Count	
(000)	2017	AADT	
-000-	2027	AADT	
000	2037	AADT	
Truck Class %'s			
Class	Seg. 1	Seg. 2	Seg. 3
2D	3.0	--	--
3AX	1.3	--	--
2S1+2S2	1.2	--	--
3-S2	3.5	--	--
--DBL-BTM	0.2	--	--
TOTAL	9.2%	--	--

NOTES ON THE FORECAST:

1. This projection assumes that the service roads depicted above in black will be built in 2017.
2. Truck classification percentages were taken from a table representative of similar facilities and locations throughout the state of Wisconsin.

MORE NOTES ON THE FORECAST:

3. USH 151 is a factor group IV (rural-other) highway (indicating low to moderate fluctuation in traffic from a seasonal perspective). It is functionally classified as a rural principal arterial (2) for count purposes.
4. The Dane County Travel Demand Model was used to complete this forecast. The Traffic Analysis Forecasting Information System output was used as a comparison tool to check against the model output. Adjustments were made as needed.

TRAFFIC FORECAST REPORT

PROJECT ID(S): 1200-08-00

ROUTE(S): USH 18/151

Region/COUNTY(IES): SW / Iowa

LOCATION: County Line to Ridgeway

COMPLETED: 10/17/2012

No-Build

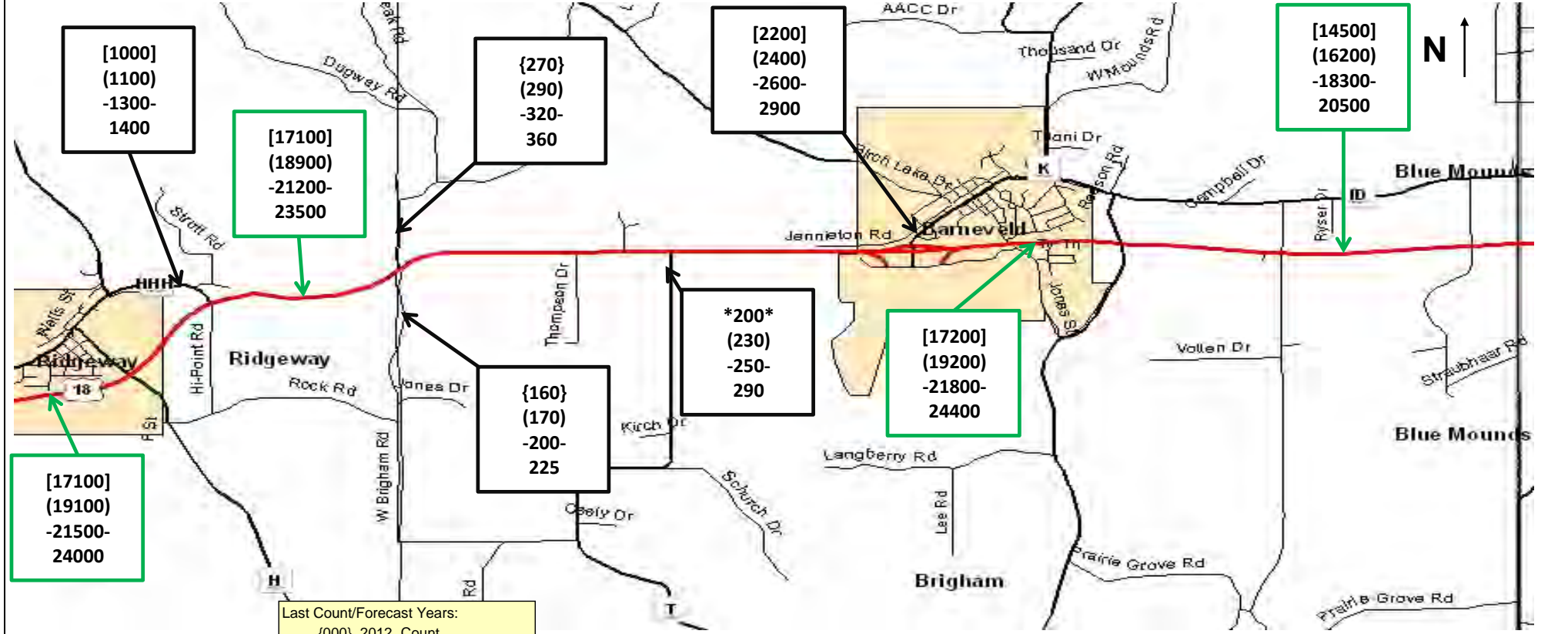
Developed by: Mike Sillence

Phone : (608) 266-3322

FAX #: (608) 267-1856

E-Mail ID:mike.sillence@dot.wi.gov

Traffic Forecasting Section; Bureau of Planning and Economic Development; Division of Transportation Investment Management



Design Values (%)			
Routes	USH		
Design	18/151		
Volume(s):	38000	--	--
K250	9.5	--	--
K100	9.9	--	--
K30	10.8	--	--
T(DHV)	6.6	--	--
D(Dsgn. Hr.)	60/40	--	--
K8(ADT)	--	--	--
T(A8HV)	--	--	--

Last Count/Forecast Years:

{000}	2012 Count
000	2008 Count
{000}	2009 Count
{000}	2017 AADT
-000-	2027 AADT
000	2037 AADT

Truck Class %'s

Class	Seg. 1	Seg. 2	Seg. 3
2D	3.0	--	--
3AX	1.3	--	--
2S1+2S2	1.2	--	--
3-S2	3.5	--	--
DBL-BTM	0.2	--	--
TOTAL	9.2%	--	--

NOTES ON THE FORECAST:

1. This projection assumes that no major new traffic generators will be added to the development already included in the travel demand model.
2. Truck classification percentages were taken from a table representative of similar facilities and locations throughout the state of Wisconsin.

MORE NOTES ON THE FORECAST:

3. USH 151 is a factor group IV (rural-other) highway (indicating low to moderate fluctuation in traffic from a seasonal perspective). It is functionally classified as a rural principal arterial (2) for count purposes.

TRAFFIC FORECAST REPORT

PROJECT ID(S): 1200-08-00

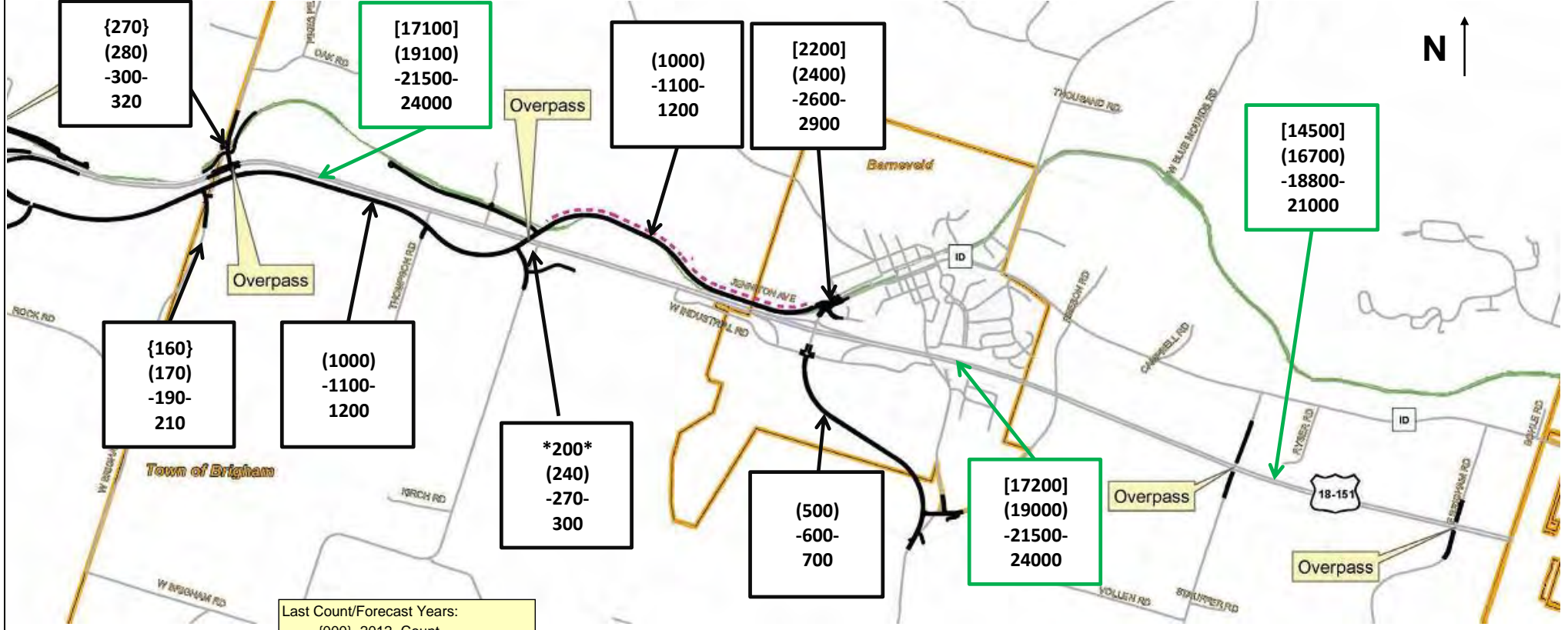
ROUTE(S): USH 18/151

Region/COUNTY(IES): SW / Iowa
 LOCATION: County Line to Ridgeway
 COMPLETED: 10/17/2012

Build

Developed by: Mike Sillence
 Phone : (608) 266-3322
 FAX #: (608) 267-1856
 E-Mail ID:mike.sillence@dot.wi.gov

Traffic Forecasting Section; Bureau of Planning and Economic Development; Division of Transportation Investment Management



Design Values (%)			
Routes →	USH		
Design	18/151		
Volume(s):	38000	--	--
K250	9.5	--	--
K100	9.9	--	--
K30	10.8	--	--
T(DHV)	6.6	--	--
D(Dsgn. Hr.)	60/40	--	--
K8(ADT)	--	--	--
T(A8HV)	--	--	--

Last Count/Forecast Years:
 {000} 2012 Count
 000 2008 Count
 [000] 2009 Count
 (000) 2017 AADT
 -000- 2027 AADT
 000 2037 AADT

Truck Class %'s			
Class	Seg. 1	Seg. 2	Seg. 3
2D	3.0	--	--
3AX	1.3	--	--
2S1+2S2	1.2	--	--
3-S2	3.5	--	--
--DBL-BTM	0.2	--	--
TOTAL	9.2%	--	--

NOTES ON THE FORECAST:

1. This projection assumes that the service roads depicted above in black will be built in 2017.
2. Truck classification percentages were taken from a table representative of similar facilities and locations throughout the state of Wisconsin.

MORE NOTES ON THE FORECAST:

3. USH 151 is a factor group IV (rural-other) highway (indicating low to moderate fluctuation in traffic from a seasonal perspective). It is functionally classified as a rural principal arterial (2) for count purposes.

TRAFFIC FORECAST REPORT

PROJECT ID(S): 1200-08-00

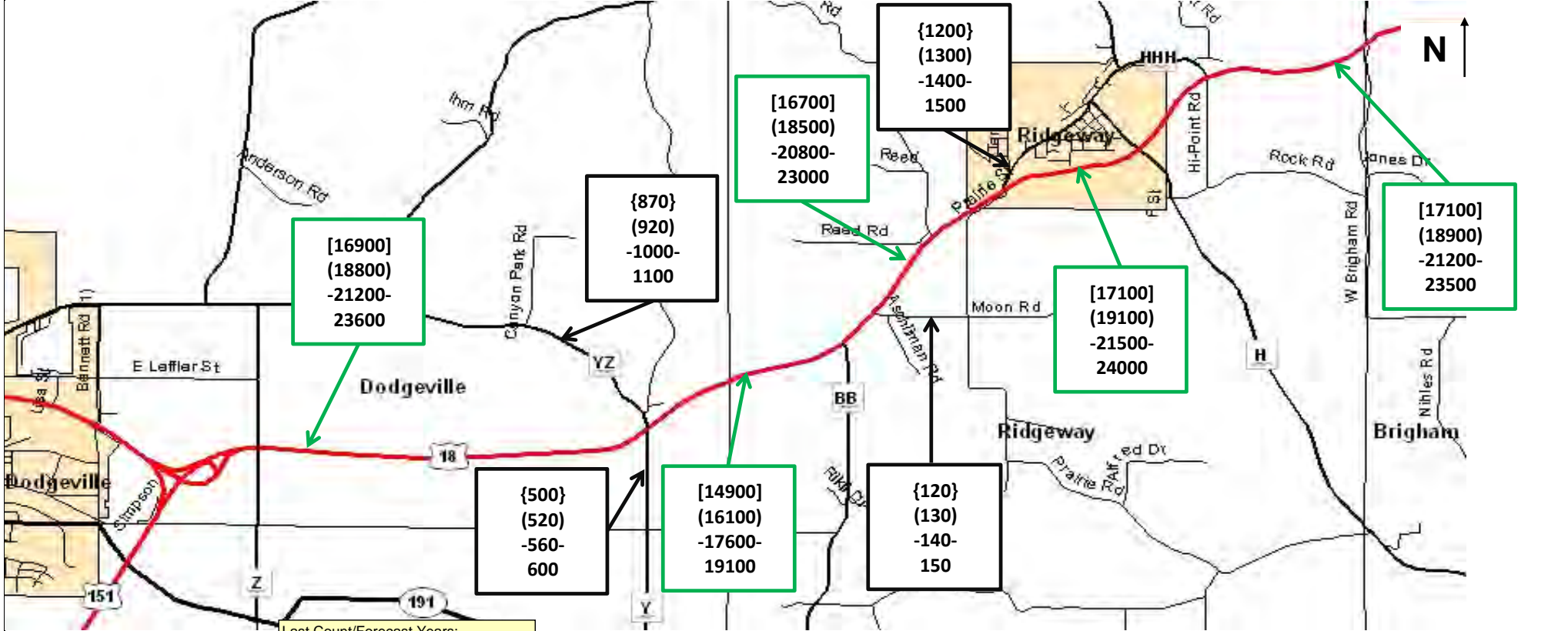
ROUTE(S): USH 18/151

Region/COUNTY(IES): SW / Iowa
 LOCATION: Ridgeway to Dodgeville
 COMPLETED: 10/18/2012

No-Build

Developed by: Mike Sillence
 Phone : (608) 266-3322
 FAX #: (608) 267-1856
 E-Mail ID:mike.sillence@dot.wi.gov

Traffic Forecasting Section; Bureau of Planning and Economic Development; Division of Transportation Investment Management



Design Values (%)			
Routes	USH		
Design 18/151			
Volume(s):	38000	--	--
K250	9.5	--	--
K100	9.9	--	--
K30	10.8	--	--
T(DHV)	6.6	--	--
D(Dsgn. Hr.)	60/40	--	--
K8(ADT)	--	--	--
T(A8HV)	--	--	--

Last Count/Forecast Years:
 (000) 2012 Count
 [000] 2009 Count
 (000) 2017 AADT
 -000- 2027 AADT

Truck Class %'s			
Class	Seg. 1	Seg. 2	Seg. 3
2D	3.0	--	--
3AX	1.3	--	--
2S1+2S2	1.2	--	--
3-S2	3.5	--	--
DBL-BTM	0.2	--	--
TOTAL	9.2%	--	--

NOTES ON THE FORECAST:

1. This projection assumes that no major new traffic generators will be added to the development already included in the travel demand model.
2. Truck classification percentages were taken from a table representative of similar facilities and locations throughout the state of Wisconsin.

MORE NOTES ON THE FORECAST:

3. USH 151 is a factor group IV (rural-other) highway (indicating low to moderate fluctuation in traffic from a seasonal perspective). It is functionally classified as a rural principal arterial (2) for count purposes.

TRAFFIC FORECAST REPORT

PROJECT ID(S): 1200-08-00

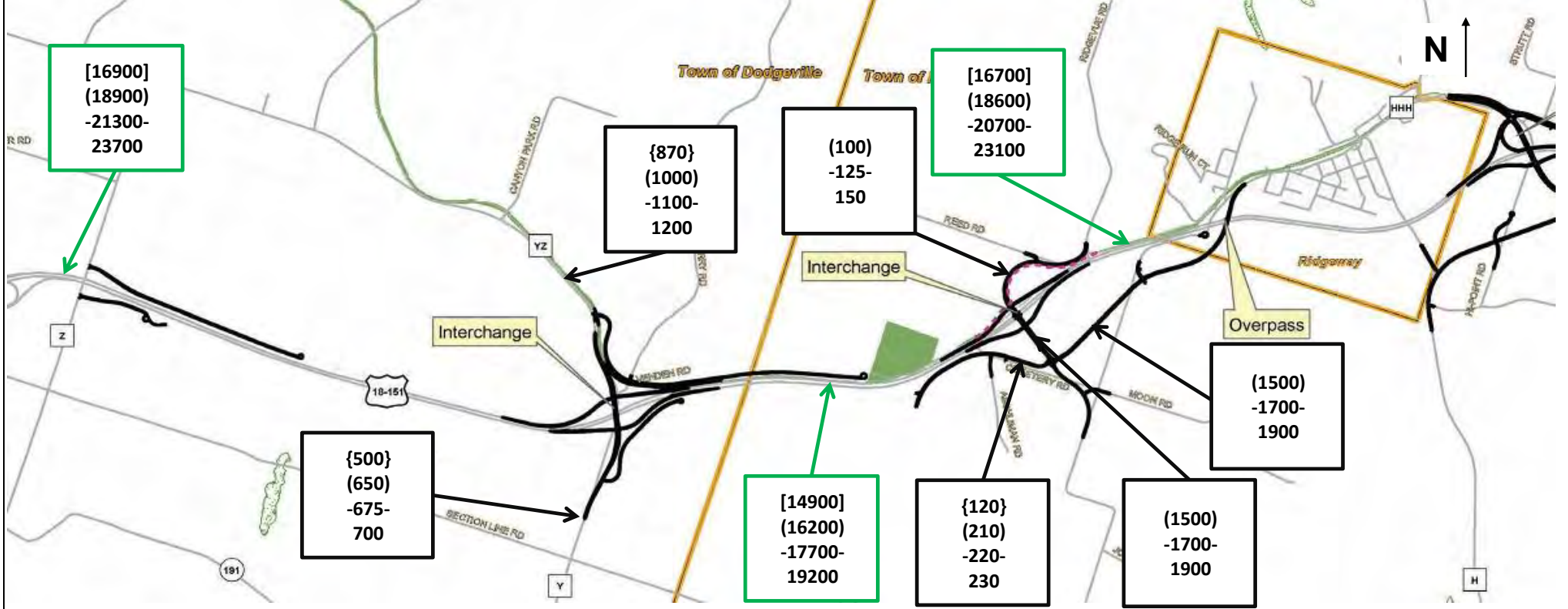
ROUTE(S): USH 18/151

Region/COUNTY(IES): SW / Iowa
 LOCATION: Ridgeway to Dodgeville
 COMPLETED: 10/18/2012

Build

Developed by: Mike Sillence
 Phone : (608) 266-3322
 FAX #: (608) 267-1856
 E-Mail ID:mike.sillence@dot.wi.gov

Traffic Forecasting Section; Bureau of Planning and Economic Development; Division of Transportation Investment Management



Design Values (%)			
Routes	USH 18/151		
Design Volume(s):		--	--
K250	9.5	--	--
K100	9.9	--	--
K30	10.8	--	--
T(DHV)	6.6	--	--
D(Dsgn. Hr.)	60/40	--	--
K8(ADT)	--	--	--
T(A8HV)	--	--	--

Last Count/Forecast Years:			
{000}	2012 Count		
[000]	2009 Count		
(000)	2017 AADT		
-000-	2027 AADT		
000	2037 AADT		
Truck Class %'s			
Class	Seg. 1	Seg. 2	Seg. 3
2D	3.0	--	--
3AX	0.0	--	--
2S1+2S2	0.0	--	--
3-S2	3.5	--	--
DBL-BTM	0.0	--	--
TOTAL	9.2%	--	--

NOTES ON THE FORECAST:

1. This projection assumes that the service roads depicted above in black will be built in 2017.
2. Truck classification percentages were taken from a table representative of similar facilities and locations throughout the state of Wisconsin.

MORE NOTES ON THE FORECAST:

3. USH 151 is a factor group IV (rural-other) highway (indicating low to moderate fluctuation in traffic from a seasonal perspective). It is functionally classified as a rural principal arterial (2) for count purposes.

TRAFFIC FORECAST REPORT

PROJECT ID(S): 1200-08-00

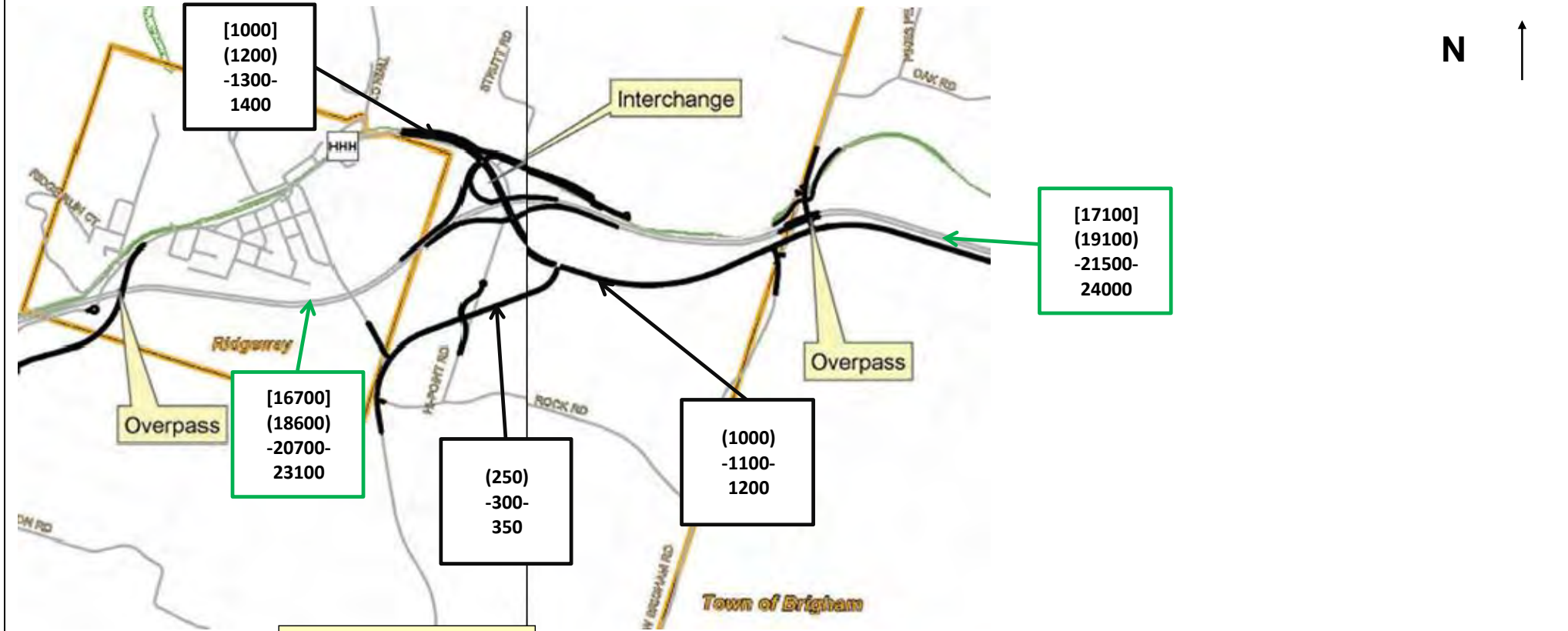
ROUTE(S): USH 18/151

Region/COUNTY(IES): SW / Iowa
 LOCATION: County Line to Ridgeway
 COMPLETED: 10/31/2012

Build

Developed by: Mike Sillence
 Phone : (608) 266-3322
 FAX #: (608) 267-1856
 E-Mail ID:mike.sillence@dot.wi.gov

Traffic Forecasting Section; Bureau of Planning and Economic Development; Division of Transportation Investment Management



Design Values (%)		Last Count/Forecast Years:	
Routes	USH	[000] 2009 Count	(000) 2017 AADT
Design	18/151		(000) 2017 AADT
Volume(s):	38000		-000- 2027 AADT
K250	9.5	--	--
K100	9.9	--	--
K30	10.8	--	--
T(DHV)	6.6	--	--
D(Dsgn. Hr.)	60/40	--	--
K8(ADT)	--	--	--
T(A8HV)	--	--	--
		Truck Class %'s	
Class	Seg. 1	Seg. 2	Seg. 3
2D	3.0	--	--
3AX	1.3	--	--
2S1+2S2	1.2	--	--
3-S2	3.5	--	--
--DBL-BTM	0.2	--	--
TOTAL	9.2%	--	--

NOTES ON THE FORECAST:

1. This projection assumes that the service roads depicted above in black will be built in 2017.
2. Truck classification percentages were taken from a table representative of similar facilities and locations throughout the state of Wisconsin.

MORE NOTES ON THE FORECAST:

3. USH 151 is a factor group IV (rural-other) highway (indicating low to moderate fluctuation in traffic from a seasonal perspective). It is functionally classified as a rural principal arterial (2) for count purposes.