

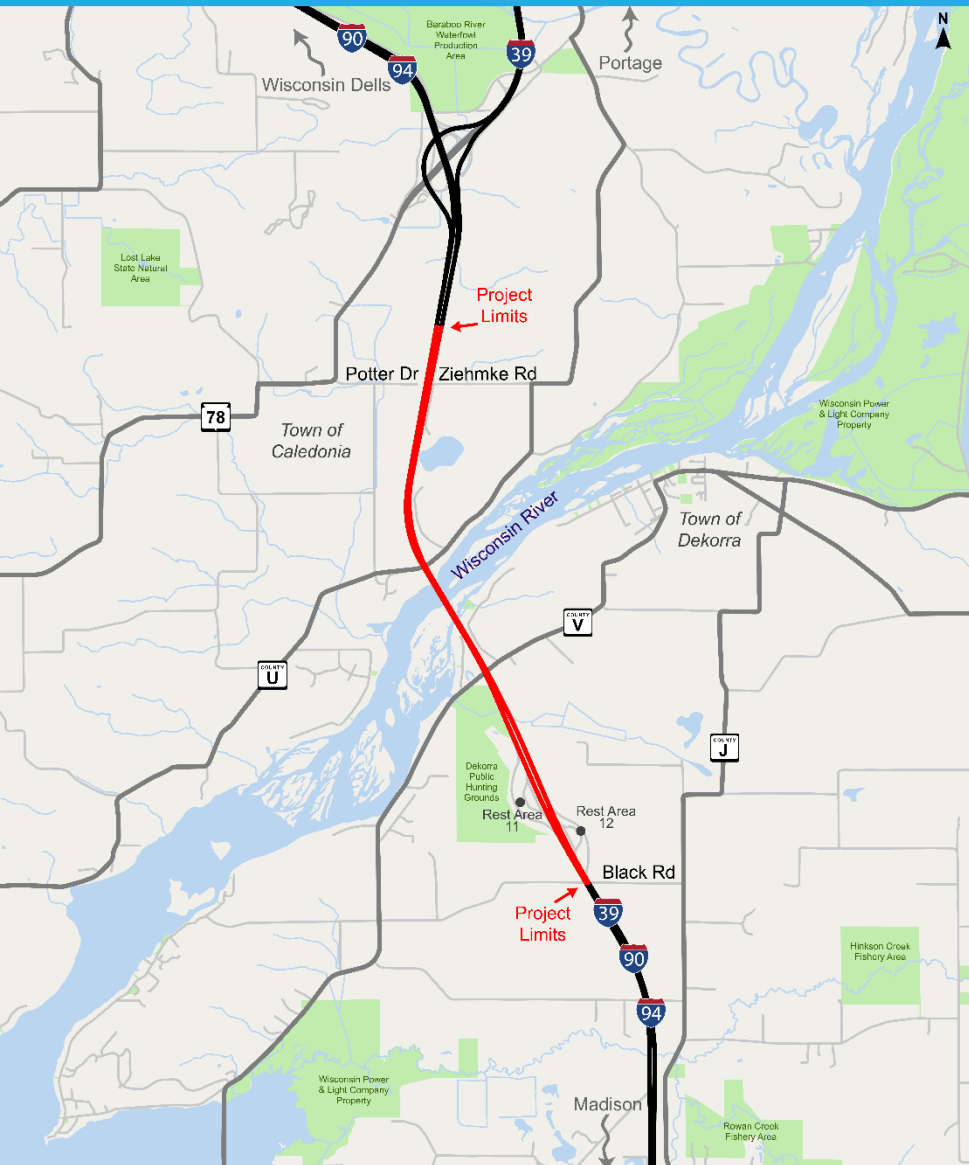
I-39/90/94 Wisconsin River Bridge Project



Public Involvement Meeting
September 12th, 2019



Project Location

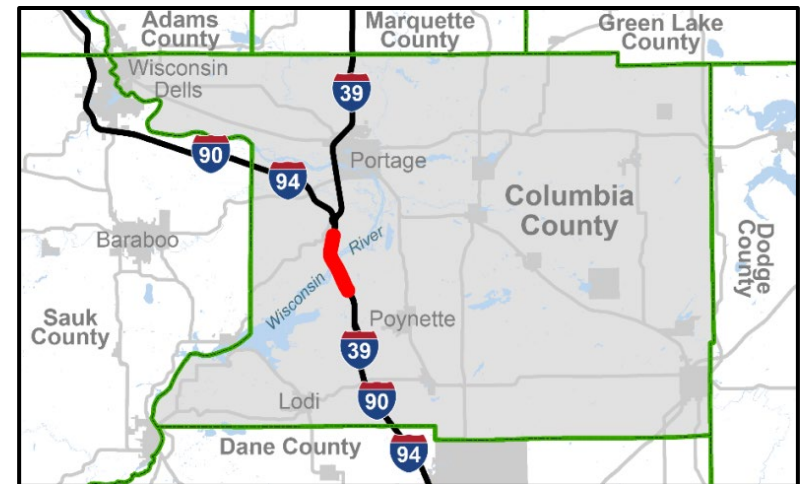


Project Termini:

Black Road to south of
I-39/94 & I-39/WIS 78

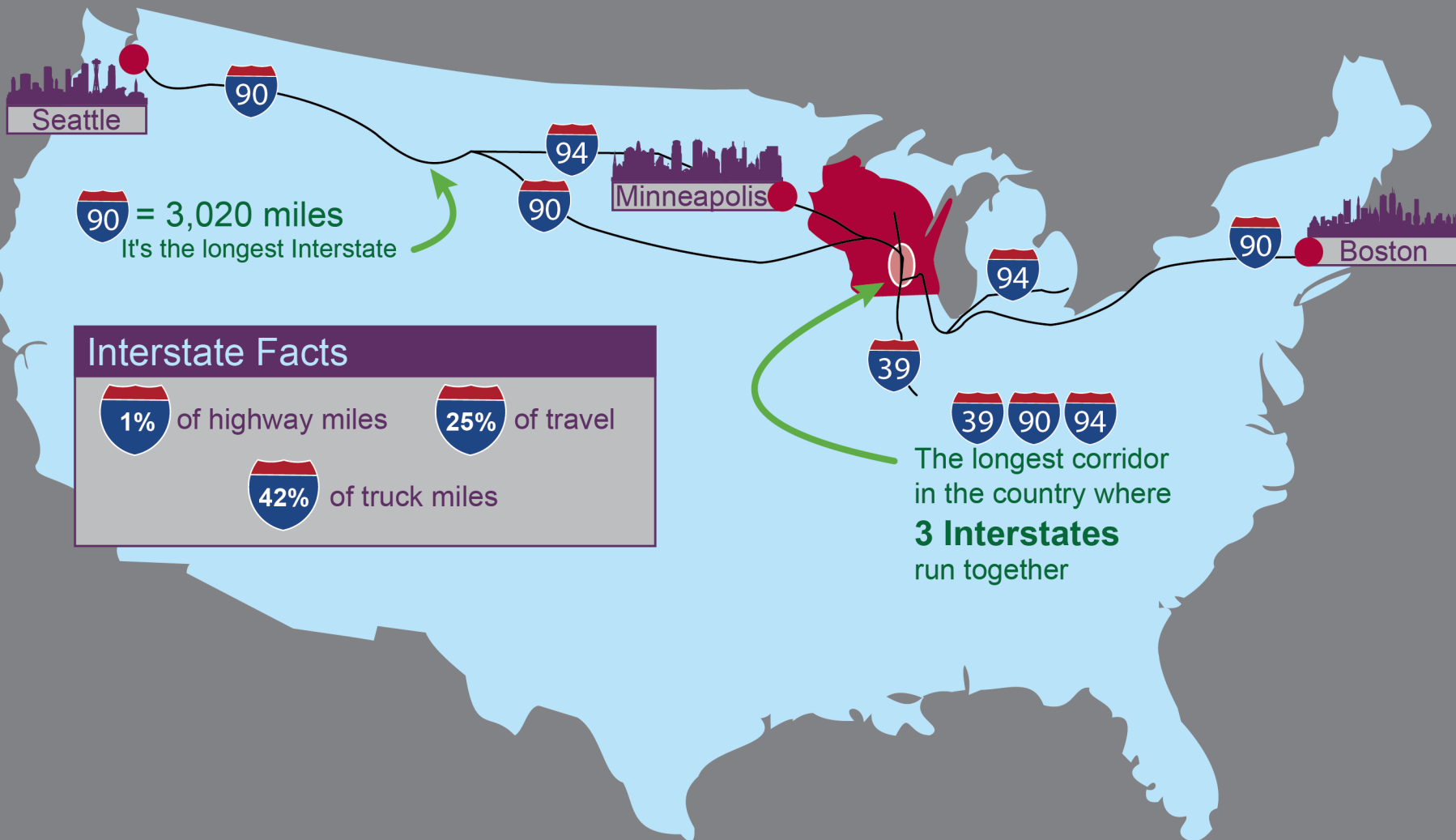
County: Columbia

Towns: Dekorra and Caledonia



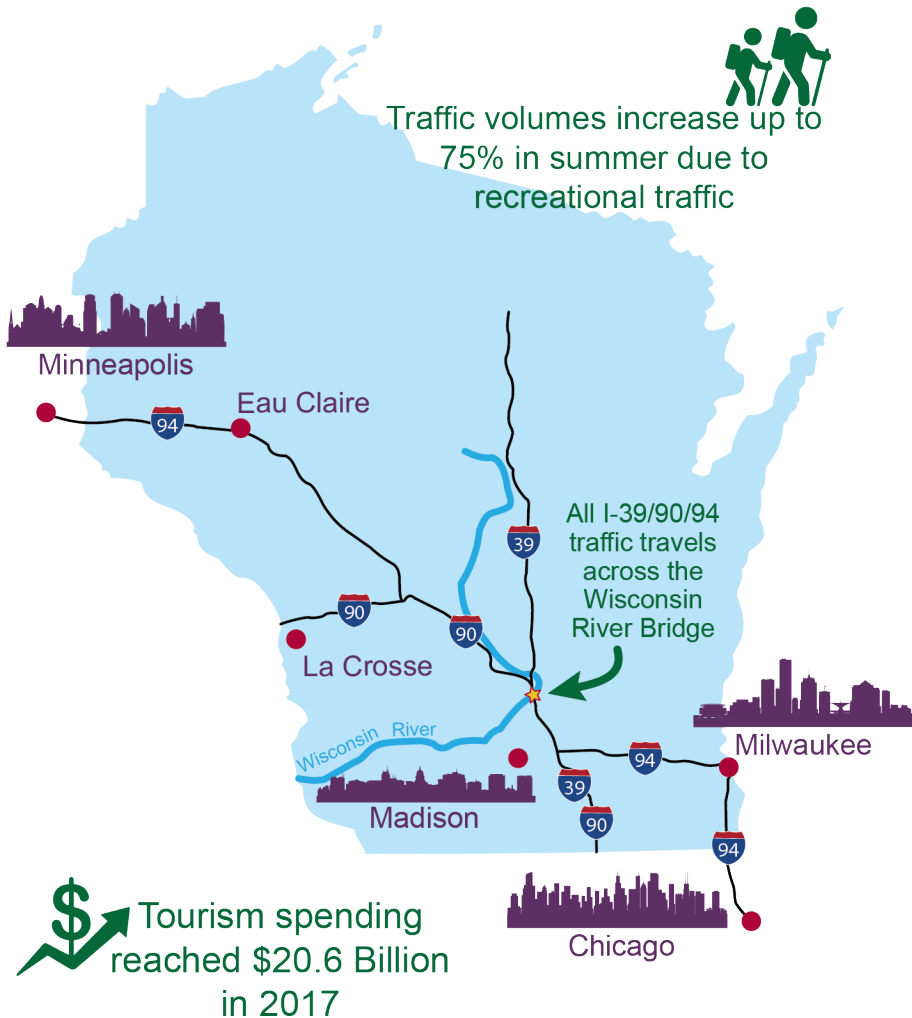
Route Importance

National Importance

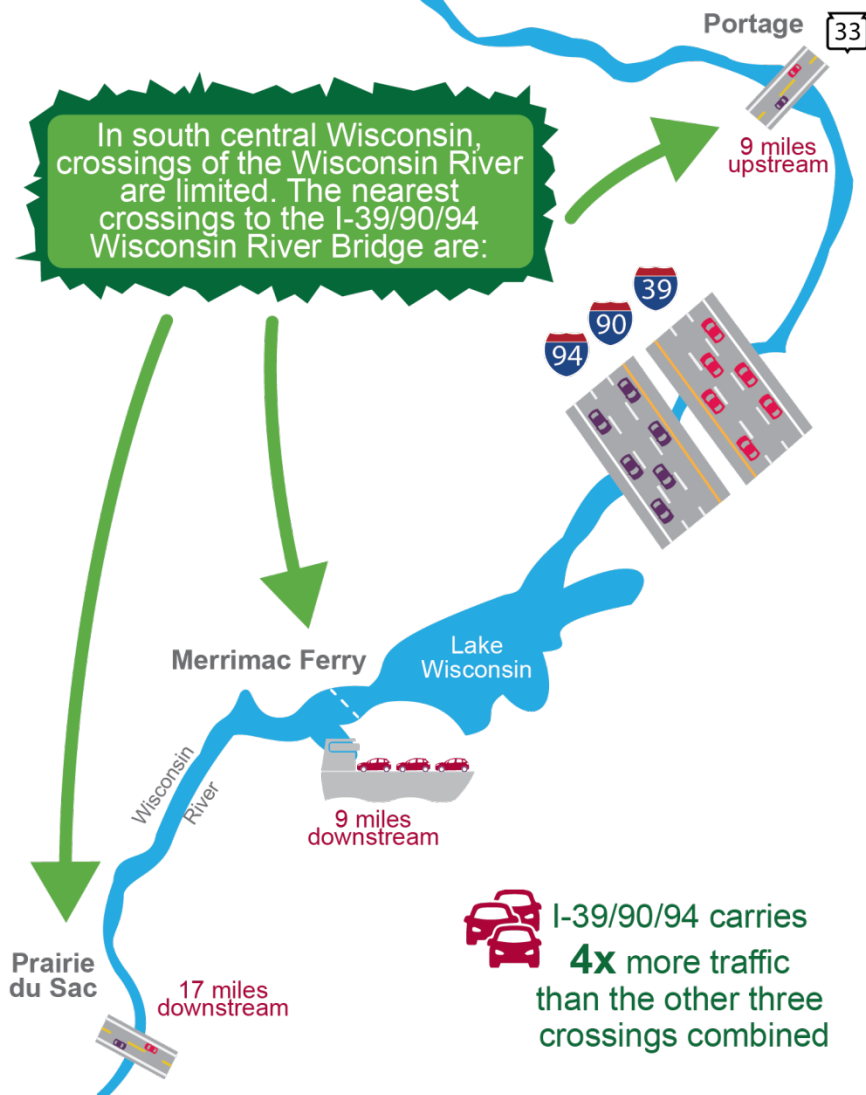


Route Importance

Regional Importance



Local Importance



≡ Purpose Statement

The purpose of the I-39/90/94 Wisconsin River Bridge Project is to address the needs of the aging I-39/90/94 structures and maintain vehicular traffic across the Wisconsin River in the towns of Dekorra and Caledonia located in Columbia County.

≡ Primary Need

 Condition of the Wisconsin River Bridge

≡ Secondary Needs

 Traffic Demands

 Roadway Geometrics

Primary Need of the Project

Concrete Deck

Poor condition



Concrete Deck

Poor condition



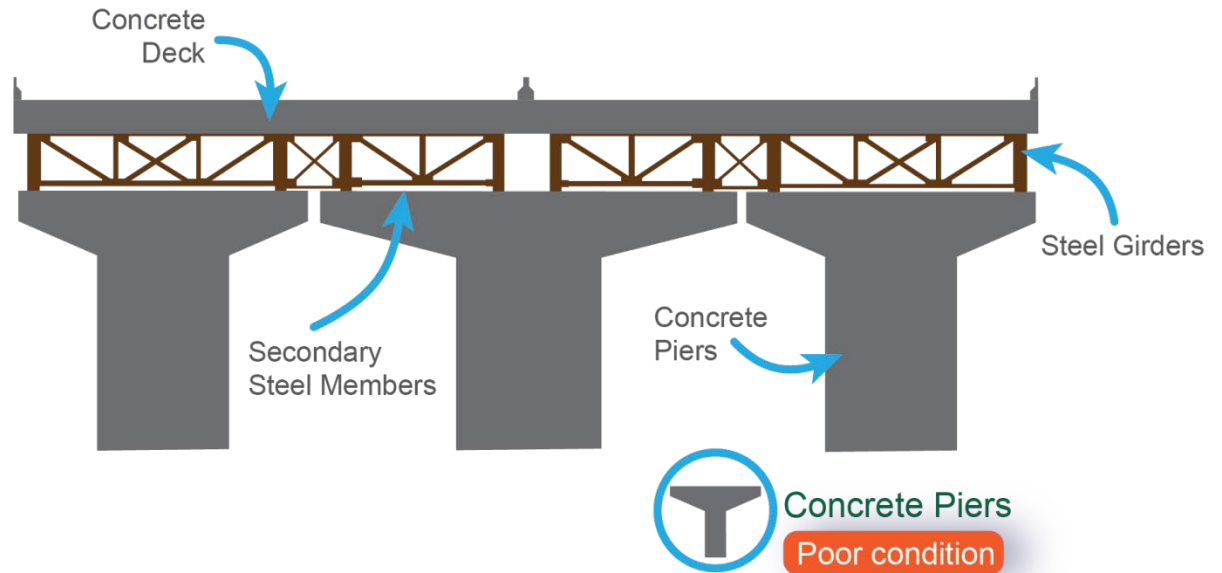
Steel Girders

Severe condition



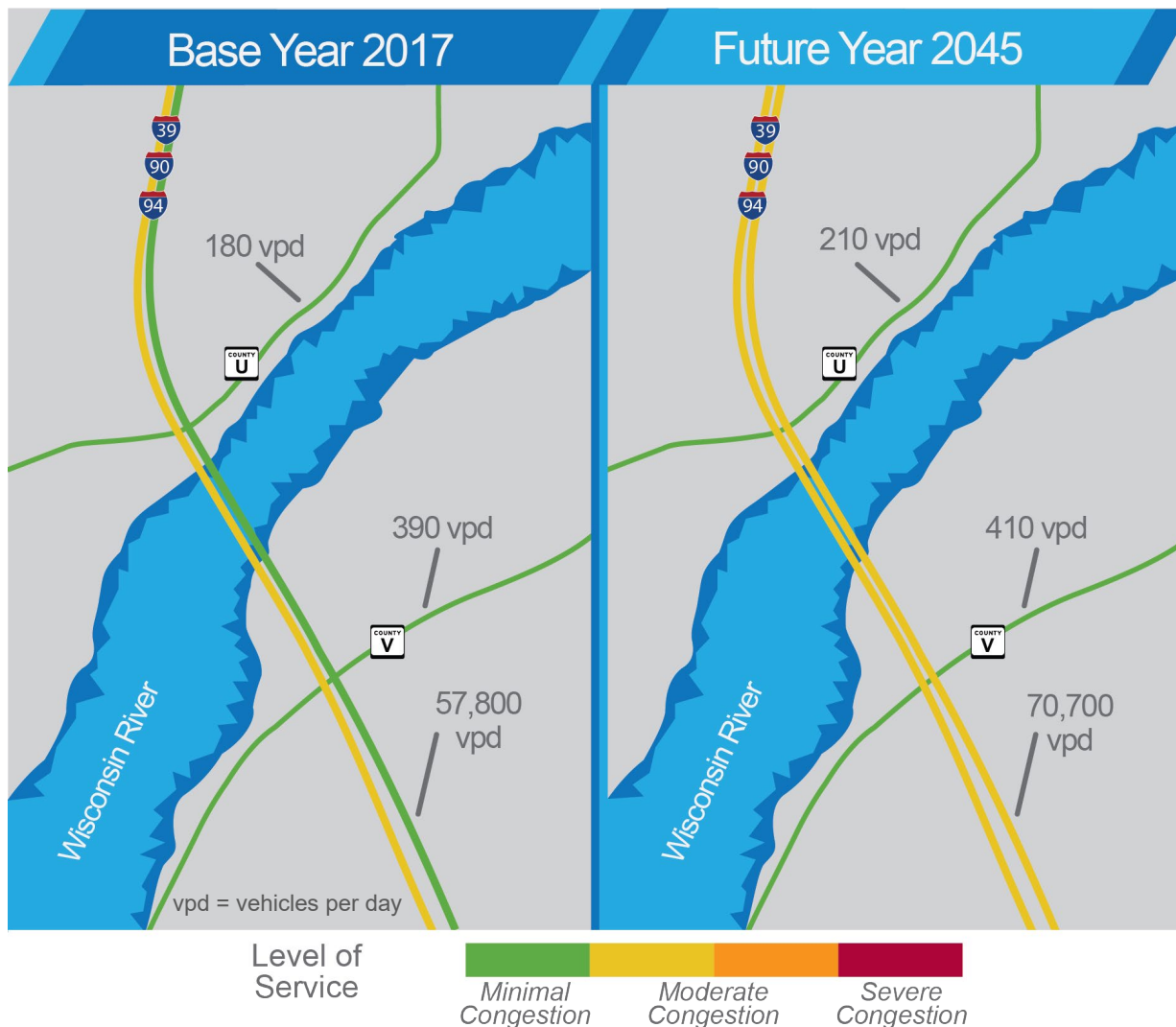
Secondary Steel Members

Poor condition



Secondary Needs of the Project

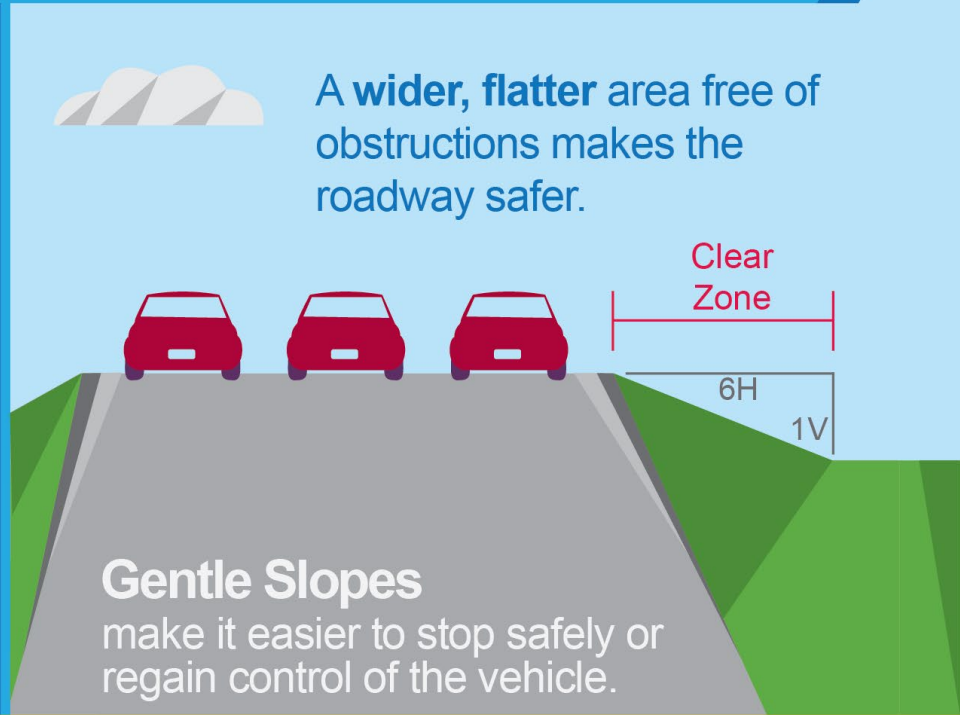
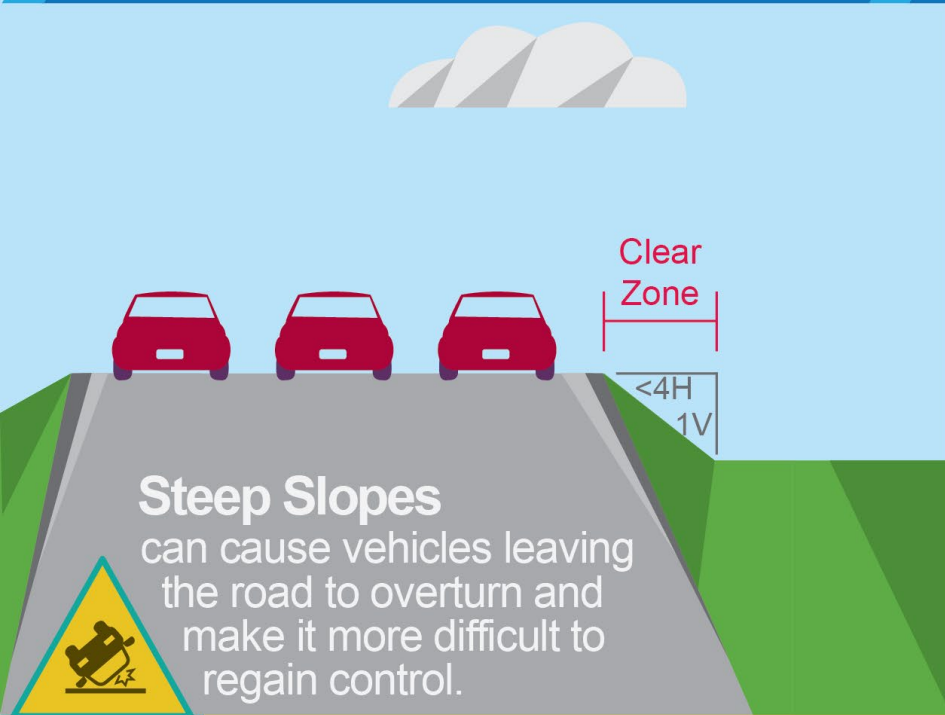
Traffic Volumes and Congestion



Secondary Needs of the Project

Existing Clear Zone I-39/90/94

Current WisDOT Clear Zone Standard



48% of crashes within the project termini were run-off-the-road crashes between 2013 and 2017



Preliminary Alternatives



No Build Alternative

- Will be used as baseline comparison

Rehab Alternative

- Repair the bridge in its current location
- Replace the concrete deck and repair steel supports

East Alternative

- Construct a new bridge just east of the existing bridge
- Shift I-39/90/94 to east to match the new bridge
- Evaluate County U and V bridges for possible replacement

West Alternative

- Construct a new bridge just west of the existing bridge
- Shift I-39/90/94 to west to match the new bridge
- Evaluate County U and V bridges for possible replacement



Preliminary Alternatives



✓ No Build Alternative

- Will be used as baseline comparison

✗ Rehab Alternative

- Traffic reduced to two lanes during construction
 - Construction would occur 4 times in 10 years
- Requires full replacement in 2045

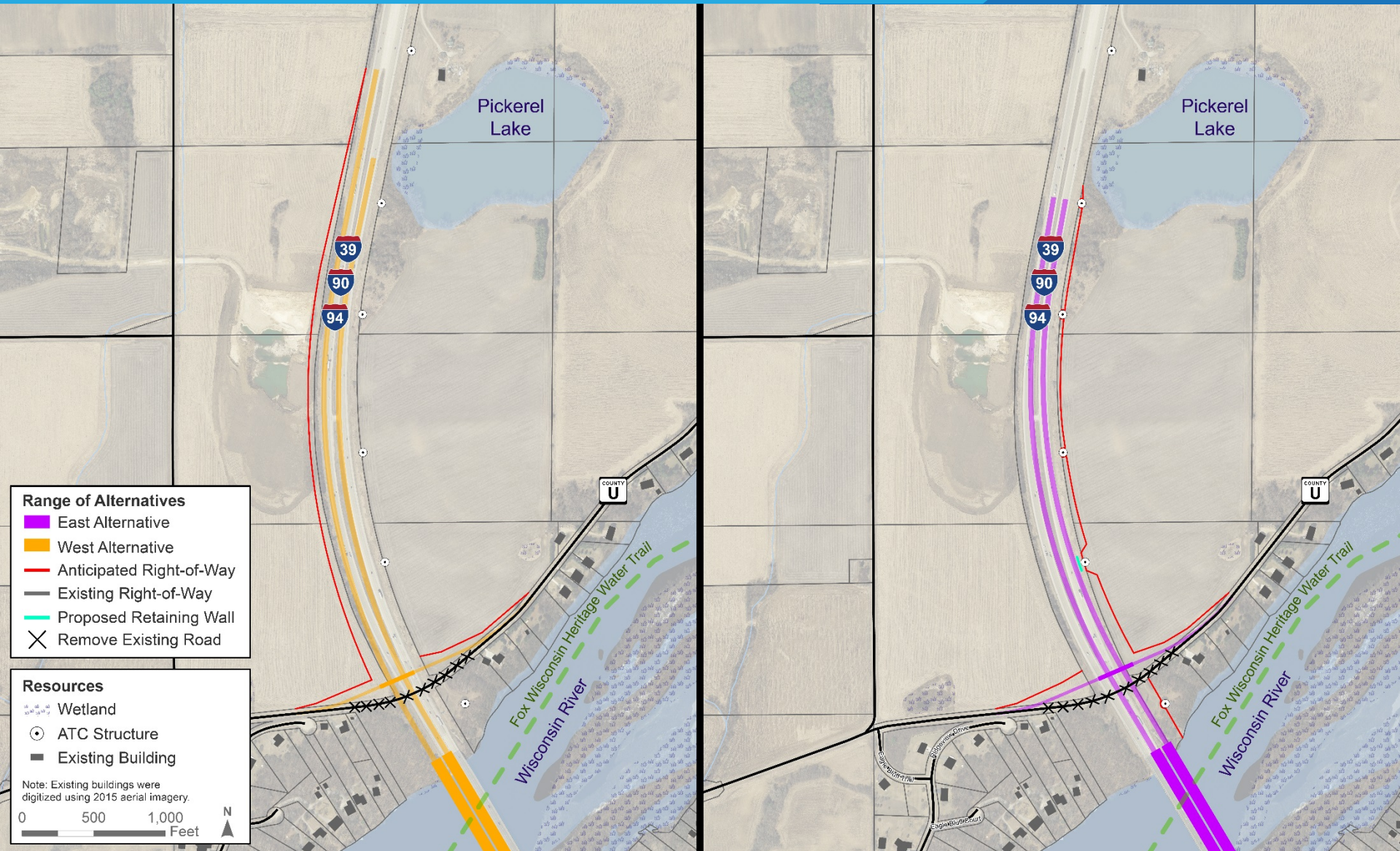
✓ East Alternative

- Addresses bridge deficiencies
- Accommodates traffic demands
- Improves roadway geometrics

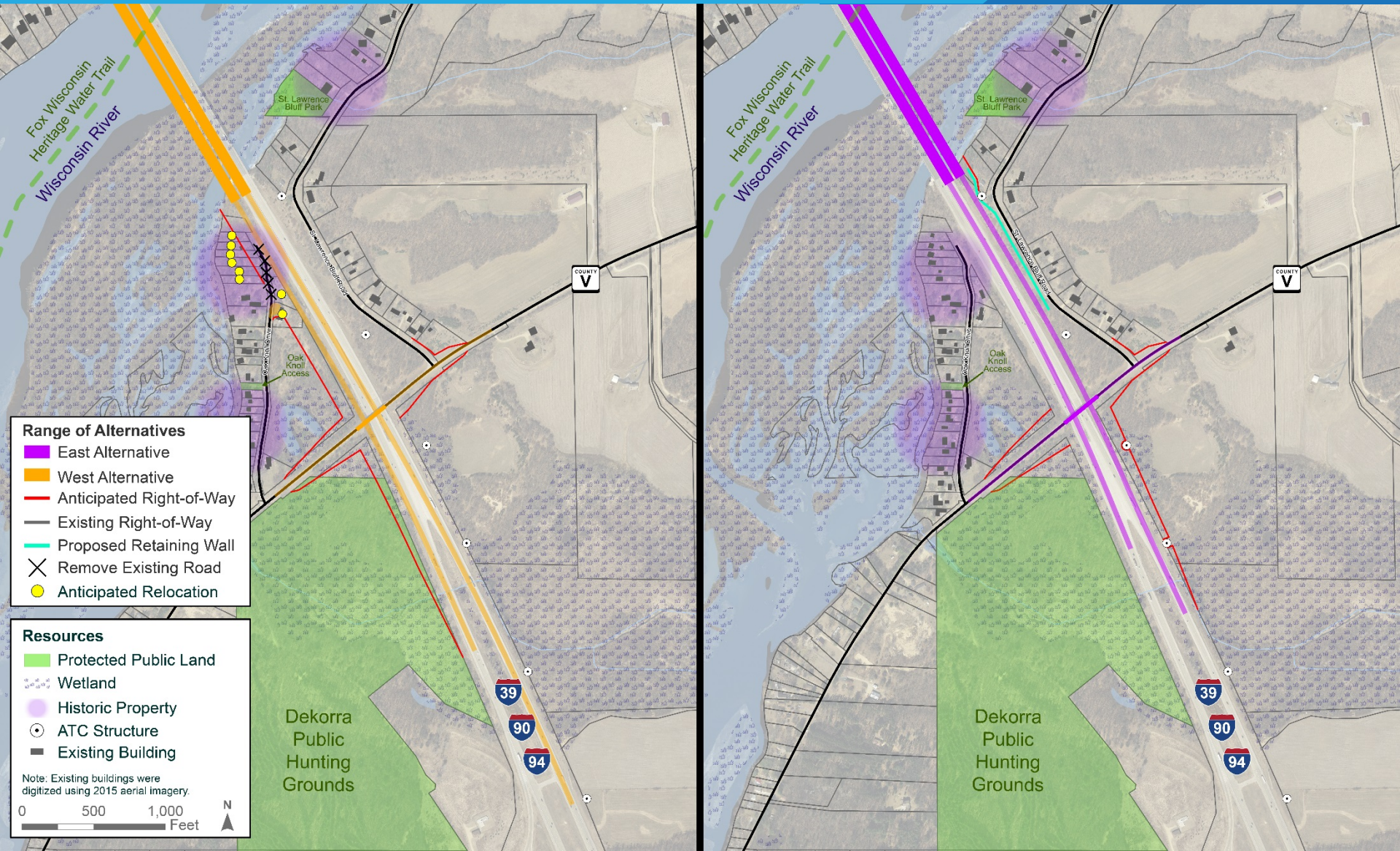
✓ West Alternative

- Addresses bridge deficiencies
- Accommodates traffic demands
- Improves roadway geometrics







Range of Alternatives (North of the Wisconsin River)









Range of Alternatives (South of the Wisconsin River)



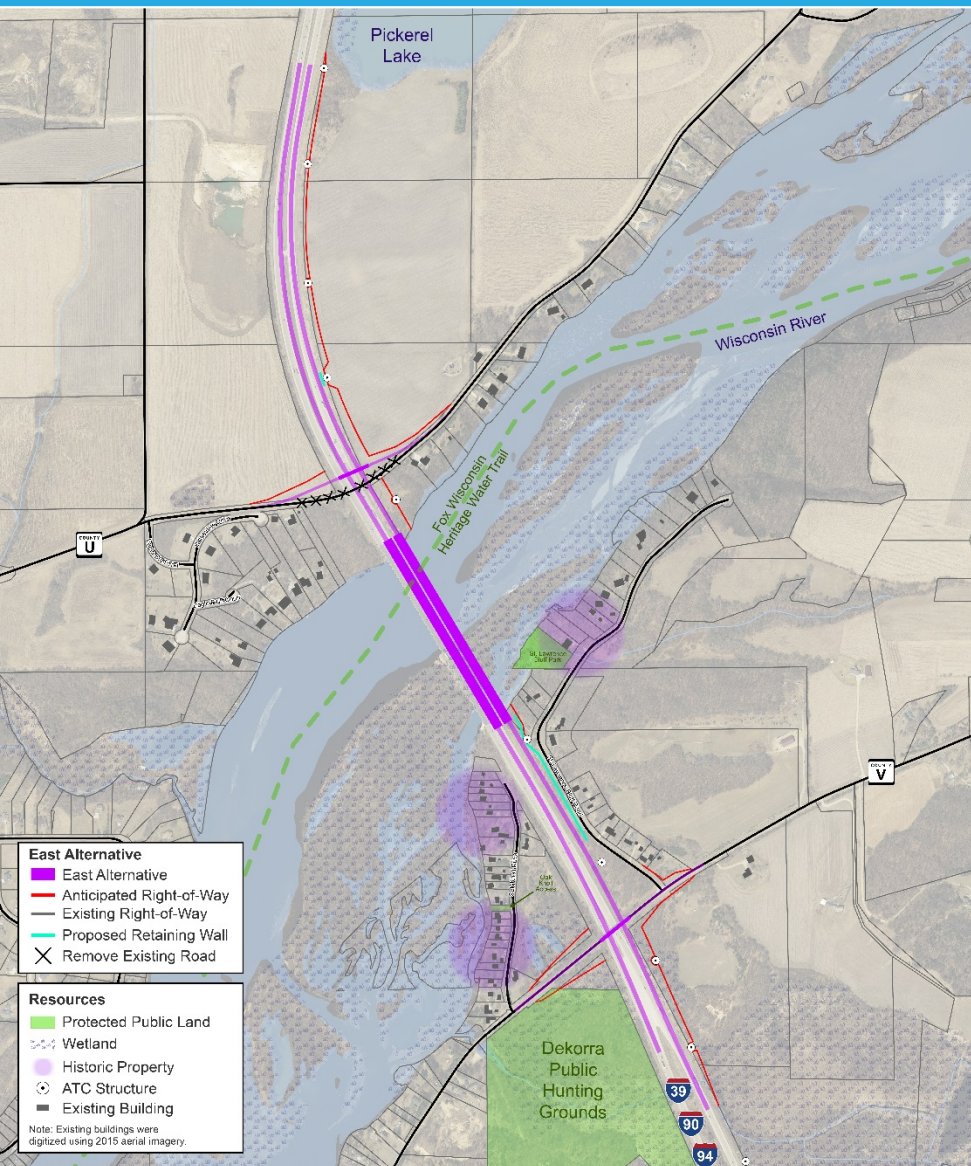
Range of Alternatives Impacts - Part 1

Item of Anticipated Impact		No Build	West Alternative	East Alternative (WisDOT Recommended)
	Alternative Length	N/A	2.0 miles	1.8 miles
	Bridge Length	1,690 feet	1,840 feet	1,760 feet
	ATC Pole Impacts	No	No	Avoided
	Historic Properties	0	1	0
 Likely to Affect	Fox-Wisconsin Heritage Water Trail	No	Yes	Yes
 Likely to Affect	Threatened or Endangered Species	No	Yes	Yes
	Relocations	0	8	0

Range of Alternatives Impacts - Part 2

Item of Anticipated Impact	No Build	West Alternative	East Alternative (WisDOT Recommended)
 Right-of-Way Required	0 acres	15.7 acres	10.4 acres
 Agricultural Land	0 acres	4.1 acres	4.1 acres
 Protected Public Land	0 acres	1.2 acres	0.1 acres
 Water Crossings	N/A	2	2
 Wetlands	0 acres	5.8 acres	5.6 acres
 Planning Level Cost Estimate (million)	\$0	\$140-190	\$140-190

WisDOT Recommended Alternative



East Alternative



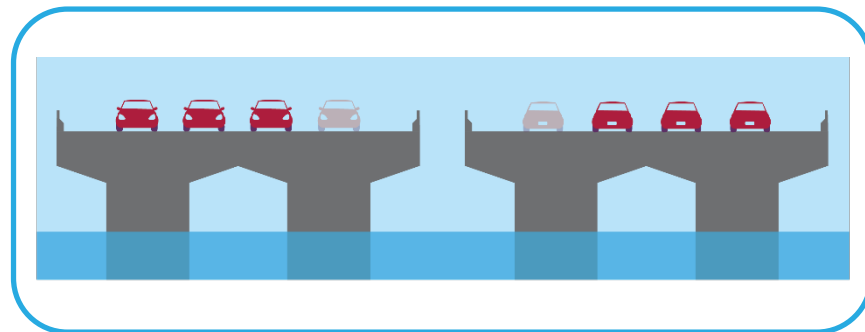
No relocations



Avoids ATC pole impacts



Allows for future fourth lane of traffic



Project Schedule

Development of Purpose and Need

Spring 2019

Preliminary Alternatives

Spring 2019

Range of Alternatives

Summer 2019

Preferred Alternative

Spring 2020

Environmental Document Complete

Fall 2020

Final Design / Real Estate Acquisition

2021 - 2023

Construction

mid-2020's



Rob Knorr, PE
Project Manager
robert.knorr@dot.wi.gov
(608) 246-5444

Southwest Region Office
2101 Wright Street
Madison, WI 53704

Project Website

<https://wisconsindot.gov/Pages/projects/by-region/sw/i399094-bridge/default.aspx>

