

Project 1071-01-02/82

**I-90**

# **Theater Road to County C La Crosse County**

Virtual Public Involvement Meeting

**October 2023**

**Dominic Cypher, P.E.**

**WisDOT-SWR La Crosse**



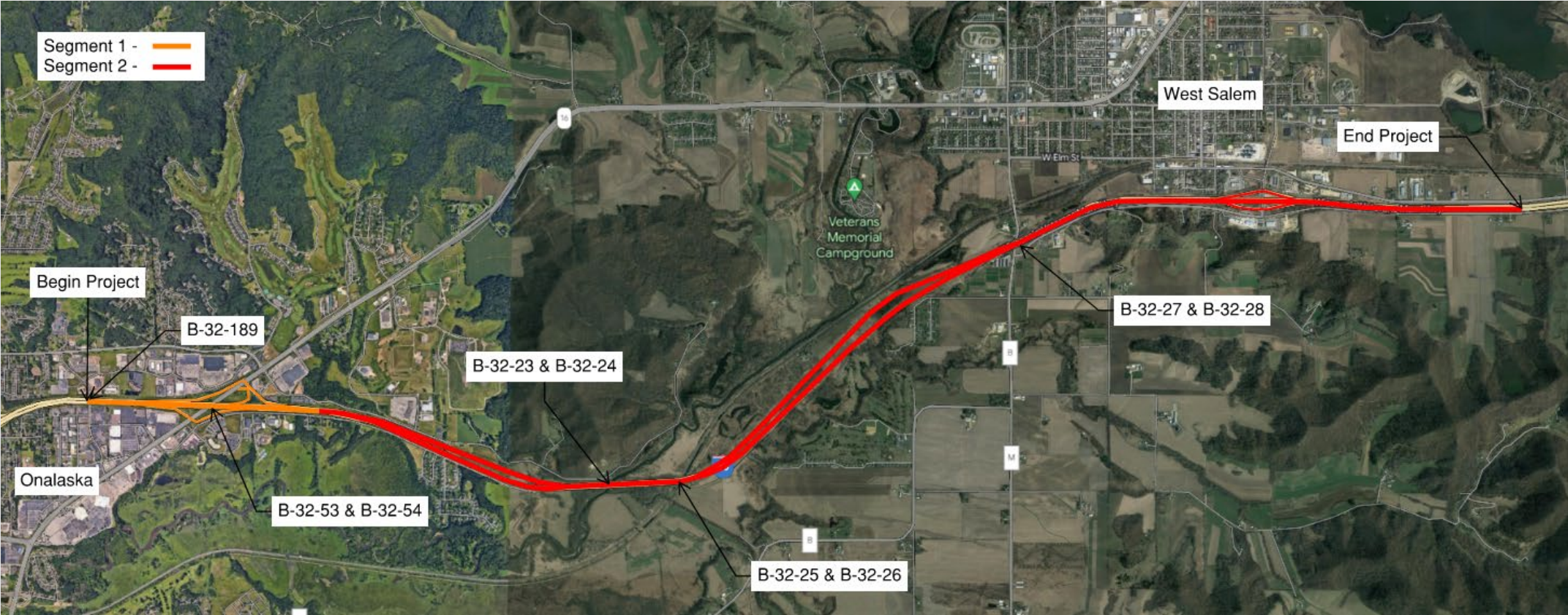
# Presentation Agenda

- Project Limits
- Project Purpose and Need
- Purposed Improvements
- Business Coordination
- Upcoming Schedule
- Contact Information



# Project Limits

## Overview



# Project Limits

## Pavement Segments

- Segment 1

- Limits

- Begins at Theater Rd and ends just East of the I-90/WIS 16 interchange at the pavement change

- Existing Pavement

- Concrete pavement with asphalt shoulders

- Segment 2

- Limits

- Begins just East of the I-90/WIS 16 interchange at the pavement change and end just East of the I-90/Count C interchange at the pavement change

- Existing Pavement

- Concrete pavement with an asphalt overlay and asphalt shoulders

# Purpose and Need

## Pavement Deterioration

- Purpose

- Maintain interstate connectivity

- Need

- Pavement deterioration exhibited on I-90
- Segment 1 deficiencies include deteriorated joints (travel lanes) and shoulders are in poor condition
- Segment 2 deficiencies include transverse and longitudinal cracking.



# Proposed Improvements

- Segment 1

- I-90

- Concrete Pavement Repair/Replacement
      - Remove areas of deficient concrete pavement and replace with new concrete.
    - Mill and Overlay Asphalt Shoulders and Gores
      - Mill 3.5-inches and overlay 3.5-inches of new asphalt
    - Replace Guardrail
      - Update Class A Beam Guard to Midwest Guardrail System (MGS) Guardrail
    - Install Drop Inlet Drainage System at Structures
    - Replace Right-of-Way Fence
    - Culvert Maintenance
    - Structure Repairs
      - Structures Over WIS 16 (B-32-53/54) and Structure Over Theater Road (B-32-189)



# Proposed Improvements Cont.

- Segment 1

- I-90/WIS 16 Interchange Ramps

- Concrete Pavement Repair/Replacement
      - Remove areas of deficient concrete pavement and replace with new concrete.
    - Mill and Overlay Asphalt Shoulders
      - Mill 3.5-inches and overlay 3.5-inches of new asphalt in spot locations
    - Storm Sewer Maintenance
    - Replace Concrete Curb and Gutter



# Proposed Improvements Cont.

- Segment 2

- I-90

- Mill and Overlay Asphalt Travel Lanes, Shoulders, and Gores
      - Mill 3.5-inches and overlay 3.5-inches of new asphalt
    - Replace Guardrail
      - Update Class A Beam Guard to Midwest Guardrail System (MGS) Guardrail
    - Install Drop Inlet Drainage System at Structures
    - Culvert Maintenance
    - Crossovers
    - Structure Repairs
      - Structures Over La Crosse River (B-32-23/24), Structures Over La Crosse State Trail (B-32-25/26), and Structures Over County M (B-32-27/28)





# Proposed Improvements Cont.

- Segment 2

- I-90/County C Interchange Ramps and Terminal Intersections

- Mill 2-inches of asphalt pavement, remove areas of deficient underlying concrete pavement, replace with new concrete, and overlay 2-inches of new asphalt pavement.

- Mill and Overlay Asphalt Shoulders

- Mill 2-inches and overlay 2-inches of new asphalt



# Structure Specific Improvements

- Structures Over La Crosse River (B-32-23/24)
  - Concrete Deck Replacement
  - Repair/Replace Bearings
  - Apply a Thin Polymer Overlay
- Structures Over La Cross State Trail (B-32-25/26)
  - Spot Painting



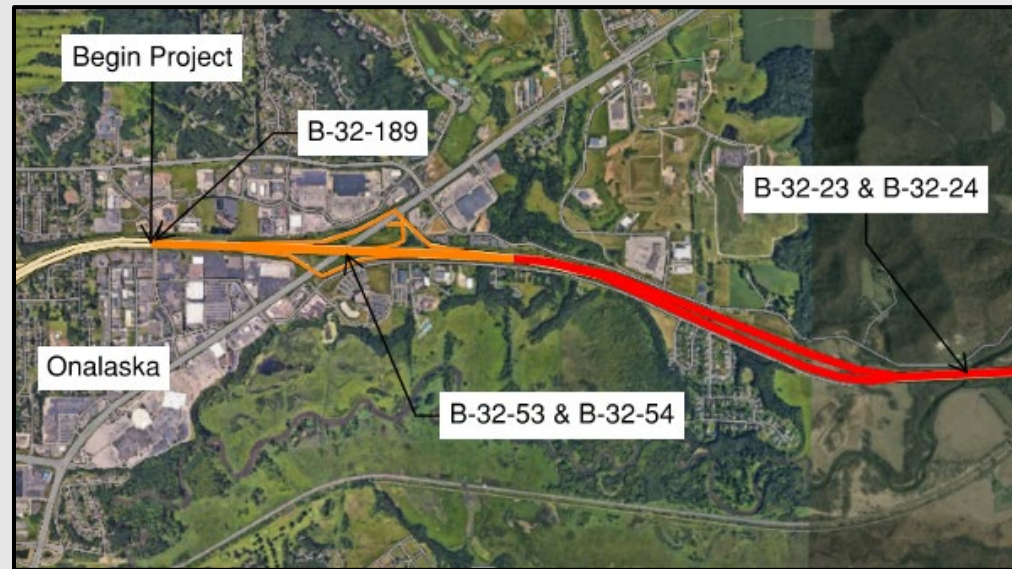
# Structure Specific Improvements Cont.

- Structure Over County M (B-32-27)
  - Concrete Deck Replacement
  - Bridge Painting
- Structure Over County M (B-32-28)
  - Concrete Deck Replacement
  - Replace/Repair Bearings
  - Bridge Painting



# Structure Specific Improvements

- Structures Over WIS 16 (B-32-53/54)
  - Replace Bearings
- Structure Over Theater Road (B-32-189)
  - Apply High Friction Surface Treatment



# Business Coordination

- Visit “[wisconsindot.gov/together](https://wisconsindot.gov/together)”
  - Tips, Tools, and Resources
- Project Team is Here to Help
  - What Information Would Help You...
    - Inform Customers About the Project?
    - Coordinate with Suppliers?
    - Communicate with Employees?



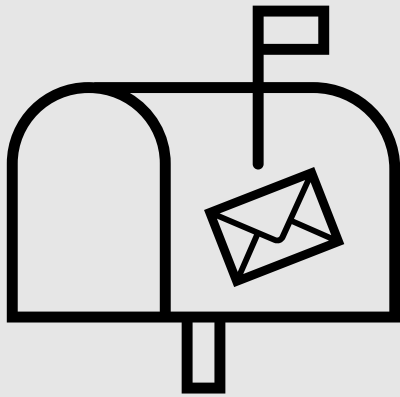
# Project Schedule

- Environmental Report– April 2024
- Preliminary Design Complete – August 2024
- PS&E – August 2026
- Contract Let – November 2026
- Construction Start – Spring 2027
- Construction Completion – Fall 2027



# Thank You

If you have any comments, questions, or concerns please do not hesitate to call, send an email, or mail a letter.



# Project Contact Information

Brian Meyer, PE

WisDOT Project Manager

(608) 789-5676

[Brian.Meyer@dot.wi.gov](mailto:Brian.Meyer@dot.wi.gov)

Dominic Cypher, PE

WisDOT Project Engineer

(608) 785-9044

[Dominic.Cypher@dot.wi.gov](mailto:Dominic.Cypher@dot.wi.gov)

## **Mailing Address:**

WisDOT Southwest Region – La Crosse  
3550 Mormon Coulee Road  
La Crosse, WI 54601

