

Project 1077-03-31/61

I-90

**0.65 MI W of County M to US 12
Monroe County**

Virtual Public Involvement Meeting

October 2023

Dominic Cypher, P.E.

WisDOT-SWR La Crosse



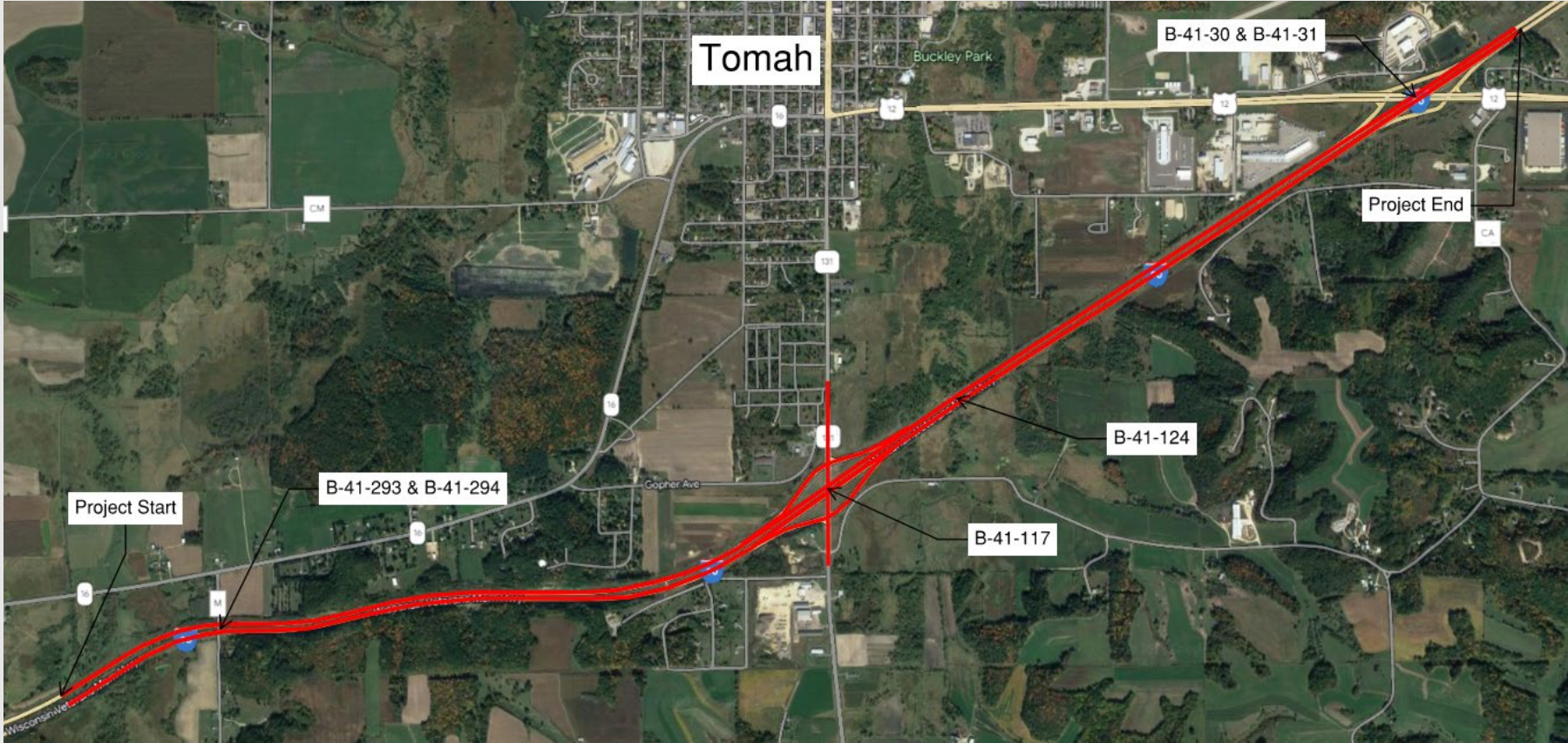
Presentation Agenda

- Project Limits
- Project Purpose and Need
- Purposed Improvements
- Business Coordination
- Upcoming Schedule
- Contact Information



Project Limits

Overview



Purpose and Need

Pavement Deterioration

- Purpose

- Maintain interstate connectivity

- Need

- Pavement deterioration exhibited on I-90 and WIS 131
- Deficiencies include cracking, spalling at joints, punchouts, and corner breaks.



Proposed Improvements

- I-90 (0.65 MI W of County M to US 12)
 - Concrete Pavement Repair/Replacement
 - Remove areas of deficient concrete pavement and replace with new concrete.
 - Mill and Overlay Asphalt Shoulders
 - Mill 2-inches and overlay 2-inches of new asphalt in spot locations
 - Replace Guardrail
 - Install Drop Inlet Drainage System at Structures
 - Replace Right-of-Way Fence
 - Project Length
 - Culvert Maintenance
 - Structure Repairs
 - Structures Over US 12 (B-41-30/31), Structure on WIS 131 Over I-90 (B-41-117)
Structure Under I-90 (B-41-124), and Structures Over County M (B-41-293/294)



Proposed Improvements Cont.

- I-90/WIS 131 Interchange Ramps
 - Concrete Pavement Repair/Replacement
 - Remove areas of deficient concrete pavement and replace with new concrete.
 - Mill and Overlay Asphalt Shoulders
 - Mill 2-inches and overlay 2-inches of new asphalt



Proposed Improvements Cont.

- WIS 131

- Concrete Pavement Repair/Replacement

- Remove areas of deficient concrete pavement and replace with new concrete.

- Mill and Overlay Asphalt Shoulders

- Mill 2-inches and overlay 2-inches of new asphalt

- Replace Guardrail

- Install Drop Inlet Drainage System at Structures

- Replace Right-of-Way Fence

- Structure Repairs

- Structure on WIS 131 Over I-90 (B-41-117)



Structure Specific Improvements

- Structures Over US 12 (B-41-30/31)

- Spot Painting
- Clean and Paint Bearings



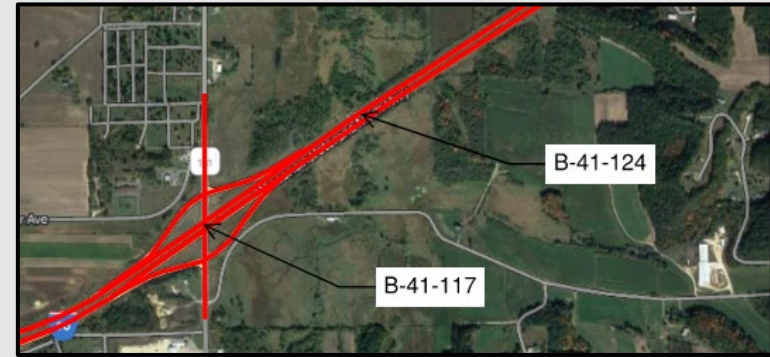
- Structure on WIS 131 Over I-90 (B-41-117)

- Concrete Deck Overlay
- Surface Repair
- Replace Concrete Approach Slabs
- Spot Painting
- Clean and Paint Bearings



Structure Specific Improvements Cont.

- Structure Under I-90 (B-41-124)
 - Repair/Replace Wingwalls
 - Clean Endwalls
- Structures Over County M (B-41-293/294)
 - Apply a Thin Polymer Overlay



Business Coordination

- Visit “wisconsindot.gov/together”
 - Tips, Tools, and Resources
- Project Team is Here to Help
 - What Information Would Help You...
 - Inform Customers About the Project?
 - Coordinate with Suppliers?
 - Communicate with Employees?



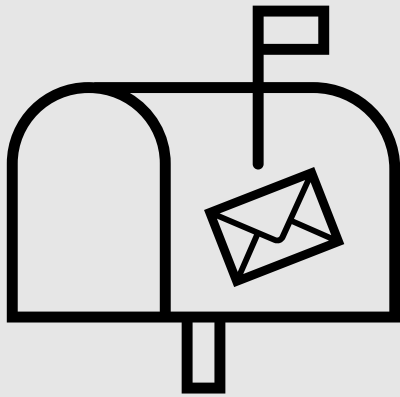
Project Schedule

- Environmental Report– February 2024
- Preliminary Design Complete – July 2024
- PS&E – November 2025
- Contract Let – February 2026
- Construction Start – Spring 2026
- Construction Completion – Fall 2026



Thank You

If you have any comments, questions, or concerns please do not hesitate to call, send an email, or mail a letter.



Project Contact Information

Brian Meyer, PE

WisDOT Project Manager

(608) 789-5676

Brian.Meyer@dot.wi.gov

Dominic Cypher, PE

WisDOT Project Engineer

(608) 785-9044

Dominic.Cypher@dot.wi.gov

Mailing Address:

WisDOT Southwest Region – La Crosse
3550 Mormon Coulee Road
La Crosse, WI 54601

