

Project 5155-02-04/74

US 14 resurfacing project

Public involvement meeting

Anthony Buerger
Project Design Engineer

March 2023



Project website

US 14 (WIS 92 to City of Evansville) - wisconsindot.gov

US 14 WIS 92 to City of Evansville

Search Results

About 179 results (0.24 seconds) Sort by: **Relevance**

US 14 (WIS 92 to City of Evansville) - Rock County
wisconsindot.gov > Pages > projects > by-region > us14-rockcounty
The proposed project will resurface **US 14** from **WIS 92** to the northern city limits of **Evansville, Wisconsin**.

Southwest Region Highway Projects and Studies
wisconsindot.gov > Pages > projects > by-region
List of current and future Wisconsin Department of Transportation ... **US 14 (WIS 92 to City of Evansville)**, between Brooklyn and Evansville - Rock County





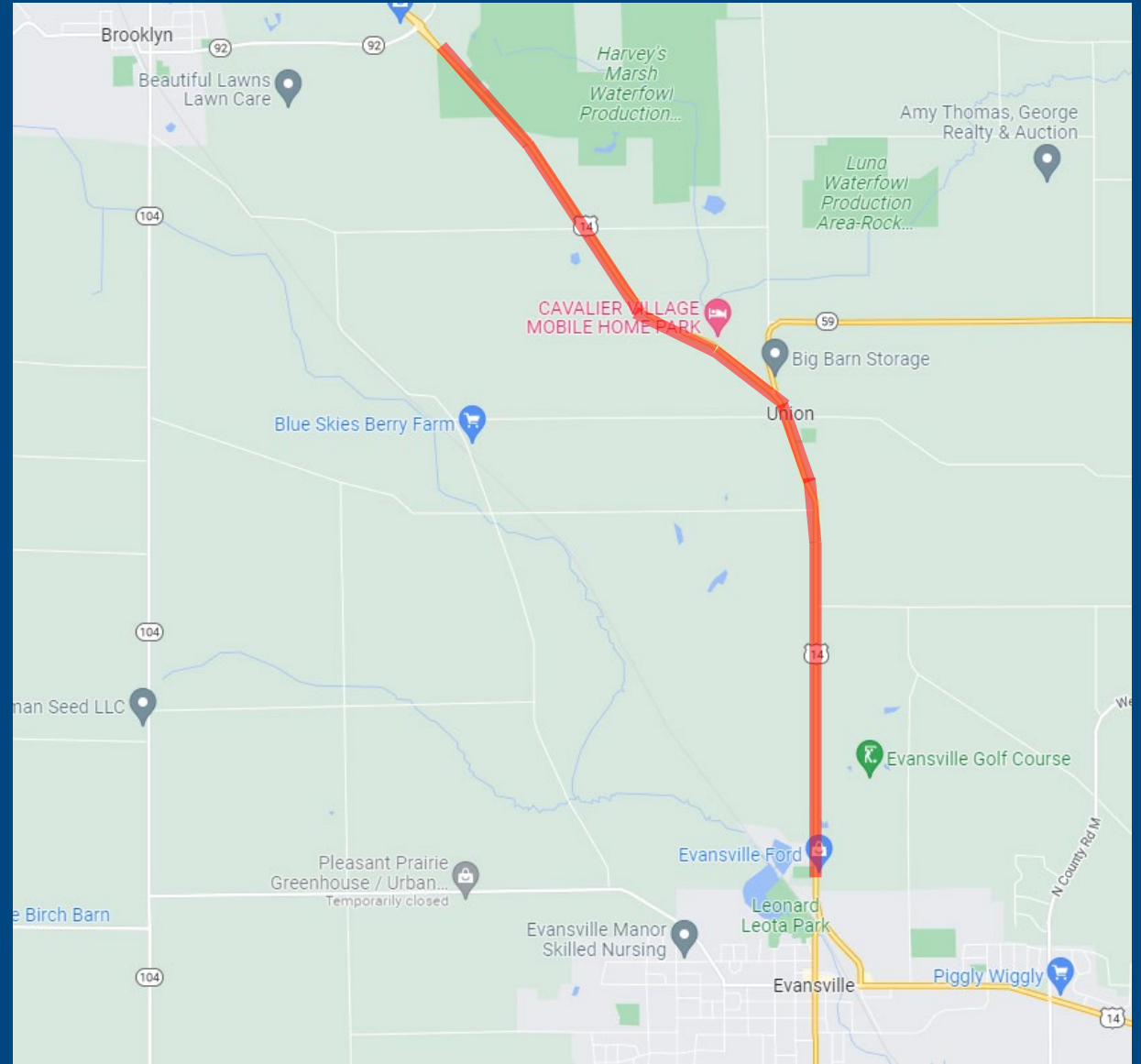
Project staff

- Anthony Buerger
 - Project leader
- Chris Hazard, P.E.
 - Project manager
- Jim Simpson, P.E.
 - Project supervisor





Project limits WIS 92 to City of Evansville north limit





Project limits

Project start – south end of
US 14/WIS 92 roundabout





Project limits

Project end – Evansville
north city limits





Roadway conditions

US 14 – existing conditions

- Traffic
 - 7980-9150 – Average Daily Traffic
 - Truck % – 3.0% - 14.1%
- Pavement
 - Two 12-foot travel lanes
 - 6-foot shoulders
- Safety
 - HSIP approval for safety improvements because departure crashes along the corridor, along with sight distance issues and left turn crashes of at three intersections





Purpose and need

US 14 pavement

- Pavement deterioration
 - Longitudinal cracking
 - Rutting





Design overview

Proposed details

- Mill and remove top layer of asphalt pavement and replace with a new layer of asphalt pavement
- Replace all pavement markings with some adjustments at intersections





Design overview

Proposed details continued

- Widen paved shoulders for a majority of the corridor
- Intersection improvements at Holt Road, WIS 59, W Butts Corners Road, and Bullard Road





Design overview

Proposed details

- Holt Road intersection improvement
 - New Holt Road alignment
 - Northbound and southbound right and left turn lanes
 - Exhibit provided







Design overview

Proposed details

- WIS 59 intersection improvement
 - High friction surface around curve near intersection





Design overview

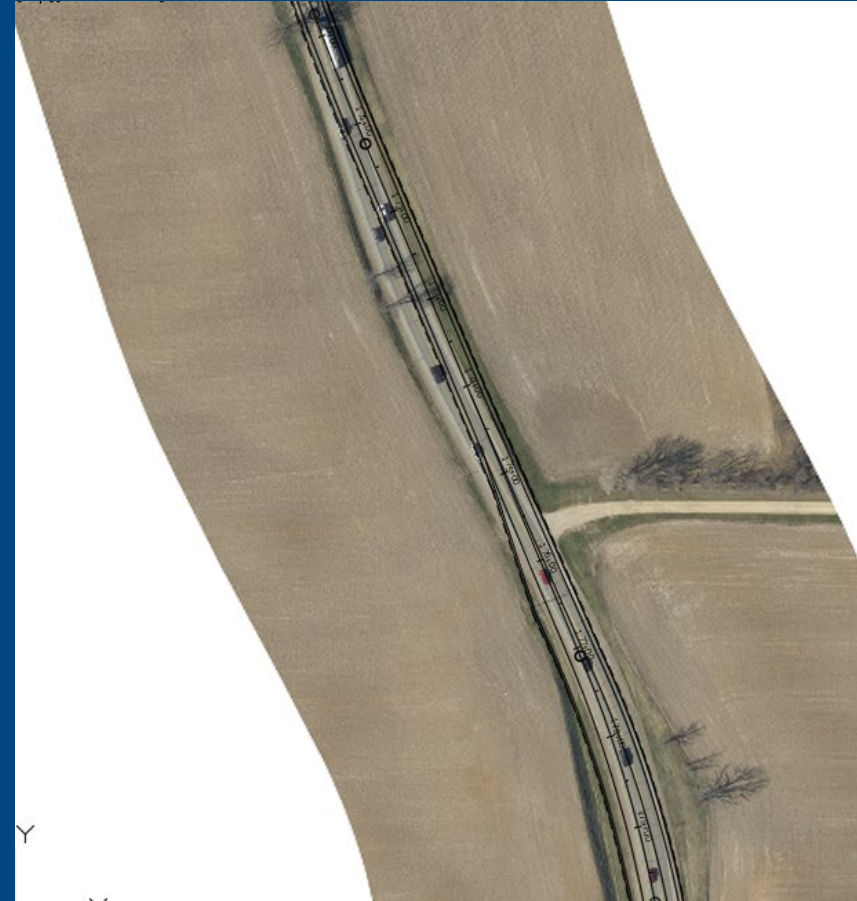
Proposed details

- W Butts Corners Road intersection improvement
 - Addition of northbound left turn lane and southbound right turn lane
 - Horizontal alignment improvements
 - Vertical profile improvements with a hill cut





Design overview





Design overview

Proposed details

- Bullard Road intersection improvement
 - Southbound left turn lane







Construction traffic impacts

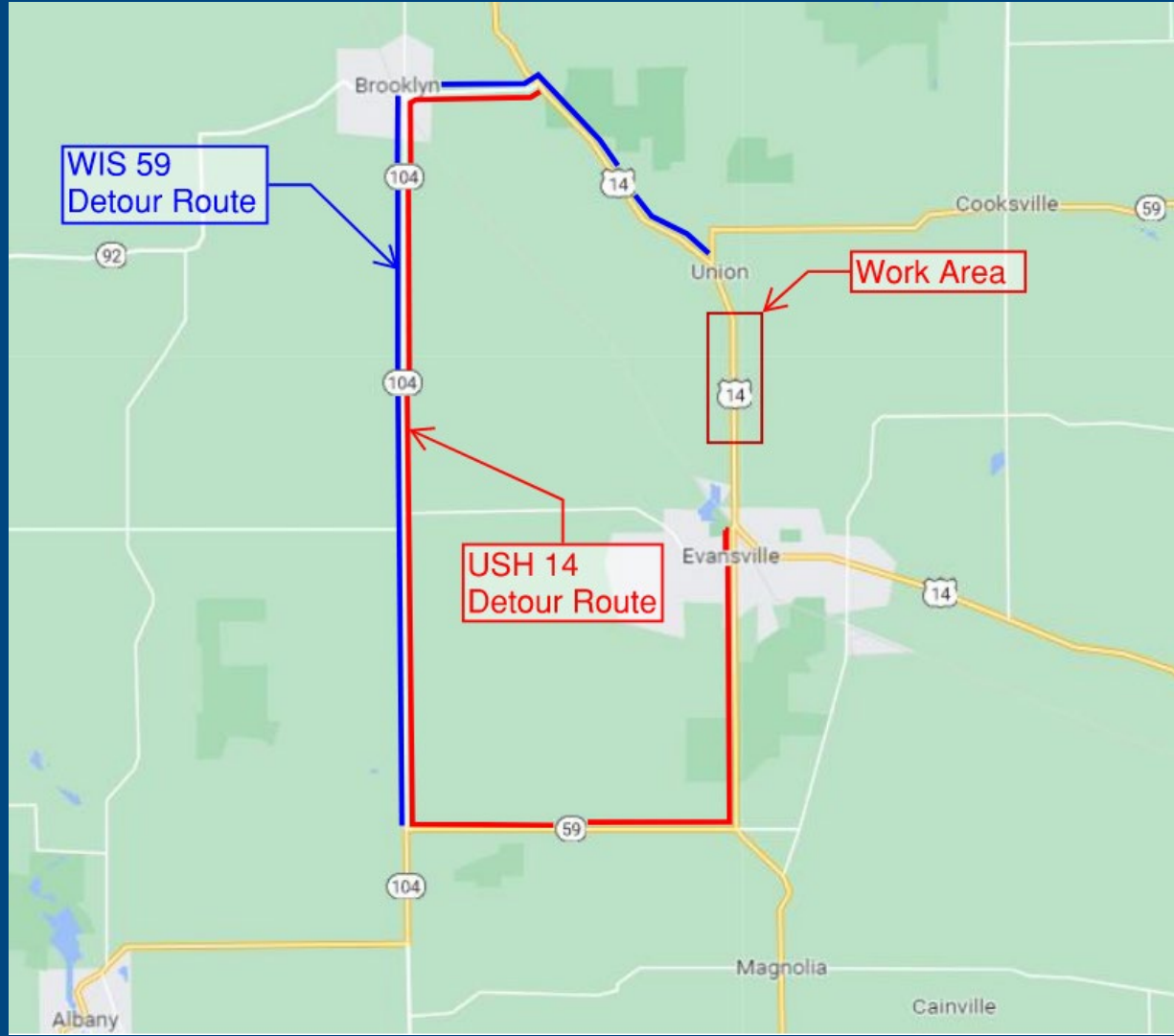
Staged under traffic

- Traffic will still be able to access US 14 for most of the project
- Thru traffic will be detoured during reconstruction of W Butts Corners intersection and possibly Holt Road intersection work
- Construction stages will be used to complete project
- Advanced signing and portable changeable message boards used to communicate with motorists when a change in the staging will occur
- Access to all businesses will be maintained to the greatest extent possible.





Detour route



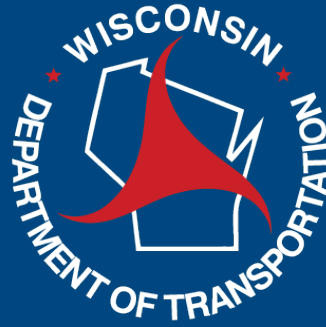


Project details

Real estate and schedule

- Real estate
 - Real estate acquisition is expected for intersection improvements
 - Landowners impacted will be contacted with further details in the future
- Schedule
 - Real estate acquisition begins – Fall 2023
 - Out for bid – November 11, 2025
 - Construction – Summer 2026





Thank you for your time!

Question or concerns?

Contact Chris Hazard, Project Manager

By Mail: 2101 Wright Street, Madison WI 53704

By Email: Christopher.hazard@dot.wi.gov

By Phone: (608) 245-2652