

US 14 Resurfacing Project

Wright Road to County MM

City of Janesville, Rock County

Public Involvement Meeting

December 2023

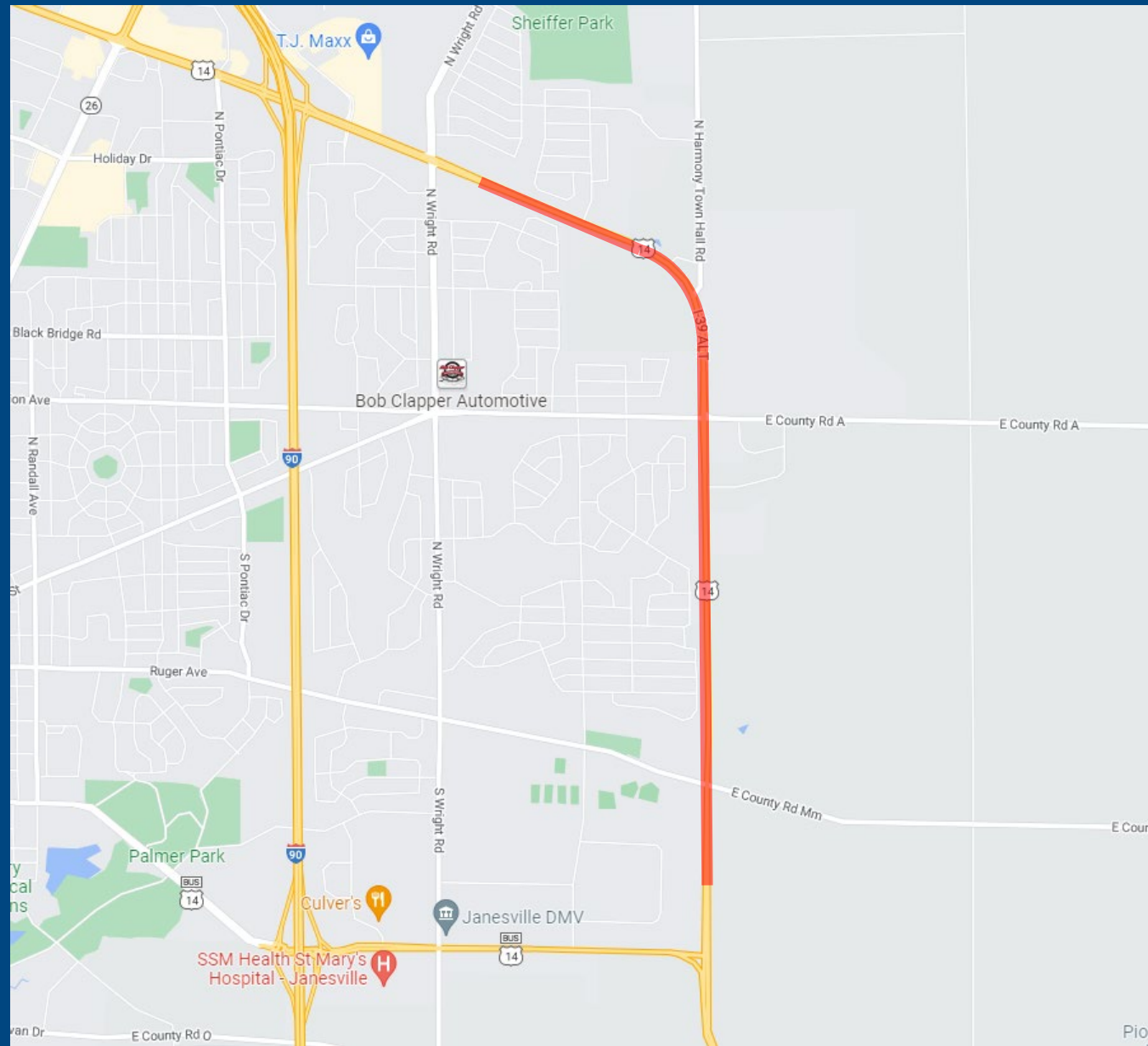


Project staff

- Matt Johnson, P.E.
 - Project Leader
- Chris Hazard, P.E.
 - Project Manager
- Jim Simpson, P.E.
 - Project Supervisor



Project limits
0.17 miles east of Wright Rd
to
0.3 miles south of
County MM



Project limits

Project start – 0.17 miles east of Wright Road



Project limits

Project end – 0.3 miles south of
County MM



Roadway conditions

US 14 – Existing conditions

- Traffic
 - 5,080-7,300 – Average Daily Traffic
 - Truck % – 5% - 11.5%
- Pavement
 - Two 12-foot travel lanes
 - 10-foot shoulders (5-foot paved, 5-foot aggregate)
- Safety
 - HSIP approval for safety improvements because of sight distance issues at two intersections



Purpose and need

US 14 pavement

- Pavement deterioration
 - Longitudinal cracking
 - Rutting



Design overview

Proposed details

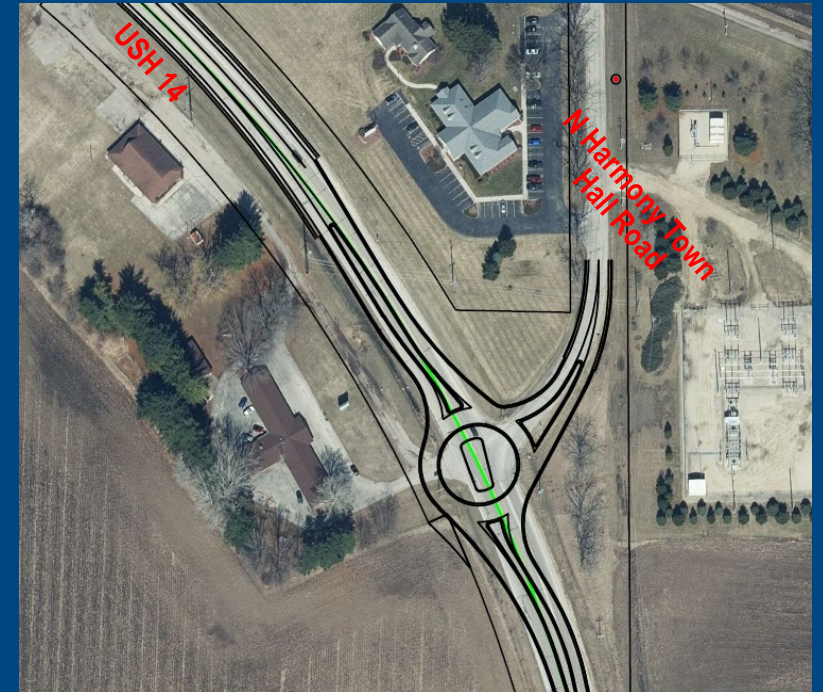
- Mill and remove 2-inches of existing asphalt pavement
- Replace with 4-inches of new asphalt pavement
- Intersection improvements at Harmony Town Hall Road and County A



Design overview

Proposed details

- Harmony Town Hall Road Intersection Improvement
 - Roundabout



Design overview

Proposed details

- County A Intersection Improvement
 - Independent left turn, through and right turn lanes



Design overview

Proposed details

- Funds were approved from the Highway Safety Improvement Program due to safety issues
 - 17 crashes were reported at this intersection between 2016 and 2020, including one fatality



Construction traffic impacts

Staged under flagging

- Traffic will still be able to access US 14
- Construction stages will be used to complete project
- Advanced signing and portable changeable message boards used to communicate with motorists when a change in the staging will occur
- Access to all businesses will be maintained to the greatest extent possible.

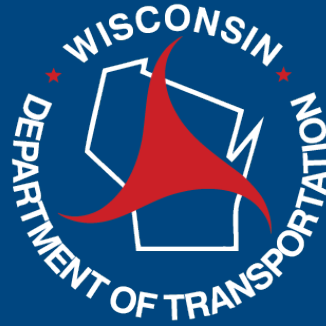


Project details

Real estate and schedule

- Real estate
 - Real estate acquisition is expected for intersection improvements at county A
 - Landowners impacted will be contacted with further details in the future
- Schedule
 - Real estate acquisition begins – Fall 2024
 - Out for bid – February 2027
 - Construction – Summer 2027





Thank You For Your Time!

Question or Concerns?

Project website: <https://wisconsindot.gov/Pages/projects/by-region/sw/us14-wrightroad/default.aspx>

Contact Chris Hazard, Project Manager

By Mail: 2101 Wright Street, Madison WI 53704

By Email: christopher.hazard@dot.wi.gov

By Phone: (608) 245-2652

