



Public Involvement Meeting & Local Officials Meeting

WIS 130, Lone Rock Sauk and Richland Counties

February/March 2022

Project Team

- WisDOT Southwest Region
 - Nathaniel Schumaker, P.E. – Project Manager
- EMCS, Inc. – Consultant Designer
 - Cory Inman, P.E. – Project Manager

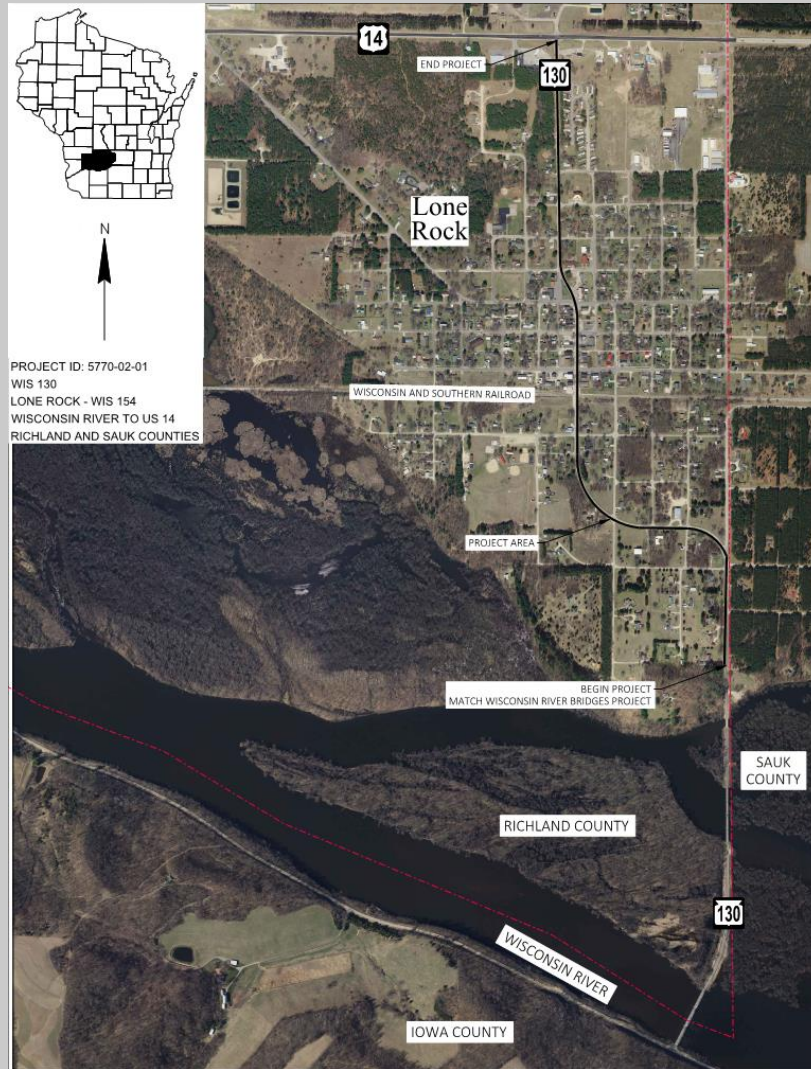


Overview

- Project location
- Project purpose and need
- Proposed improvements
- Real estate needs
- Construction staging
- Current project schedule



Project location



Project Purpose and Need

- WIS 130 importance
 - Regional route for truck and passenger vehicles
 - Designated long truck route for freight movement
- WisDOT's objective is to ensure the safe and efficient operations of the state's highway system while supporting local access

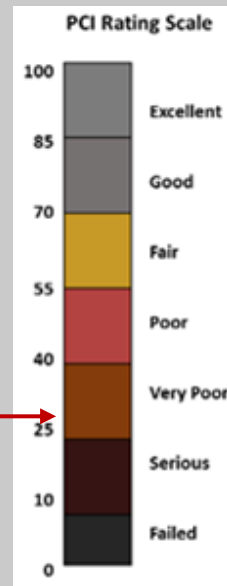


Project Purpose and Need

- Identified needs:

- Deteriorating pavement with cracking and rutting present
- Curb ramps do not meet Americans with Disabilities Act (ADA) standards
- Pavement markings are aging with lack of proper reflectivity

WIS 130 = 34



Proposed Improvements

- Pavement resurfacing with additional improvements best address the project needs
 - Balances level of investment in the roadway system while achieving added pavement life and improving safety
- Implementing a cycle of well-timed pavement maintenance ensures that the taxpayers' investment continues to be maximized



Proposed Improvements

- Improvements recommended to keep pedestrians moving safely and efficiently
 - ADA curb ramp upgrades at the following intersections
 - East Exchange St
 - Railroad Tracks
 - Commercial St
 - Richland St
 - Union St



Real Estate Needs

- Minor permanent fee and temporary limited easements are needed for curb ramp upgrades throughout
- Acquisition process
 - WisDOT will acquire real estate
 - Real estate staff will meet with impacted property owners
 - Begin real estate acquisitions in fall/winter 2022
- Landowner Rights brochure available on the project website

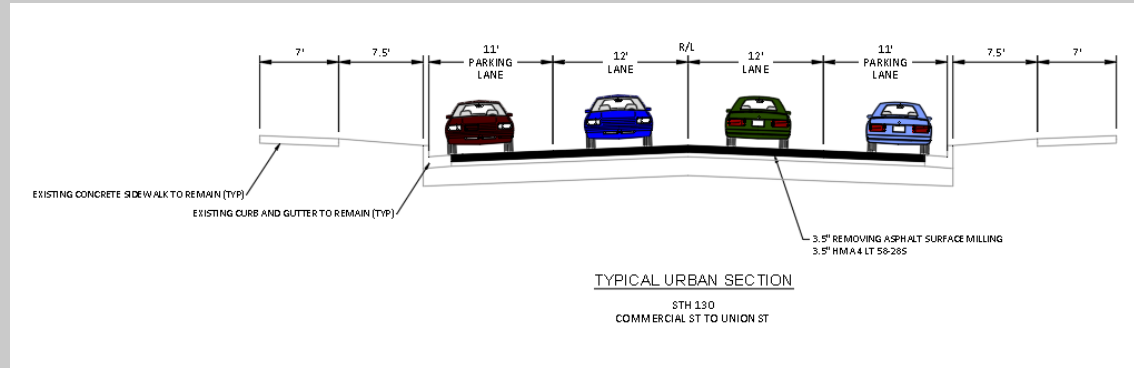
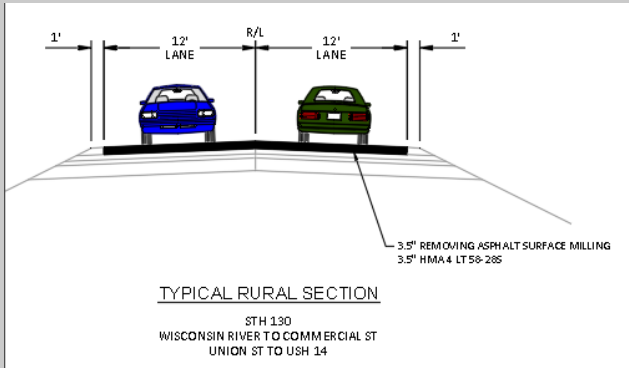


Proposed Construction Staging

- Maintaining safety and mobility are important during construction
- Proposed traffic impacts
 - Single lane closures with flagging conditions for the majority of work
 - Local and emergency access will be maintained
 - Detour Route anticipated for railroad crossing work
 - Anticipate one week
- Work is anticipated in summer and fall of 2025 or 2026



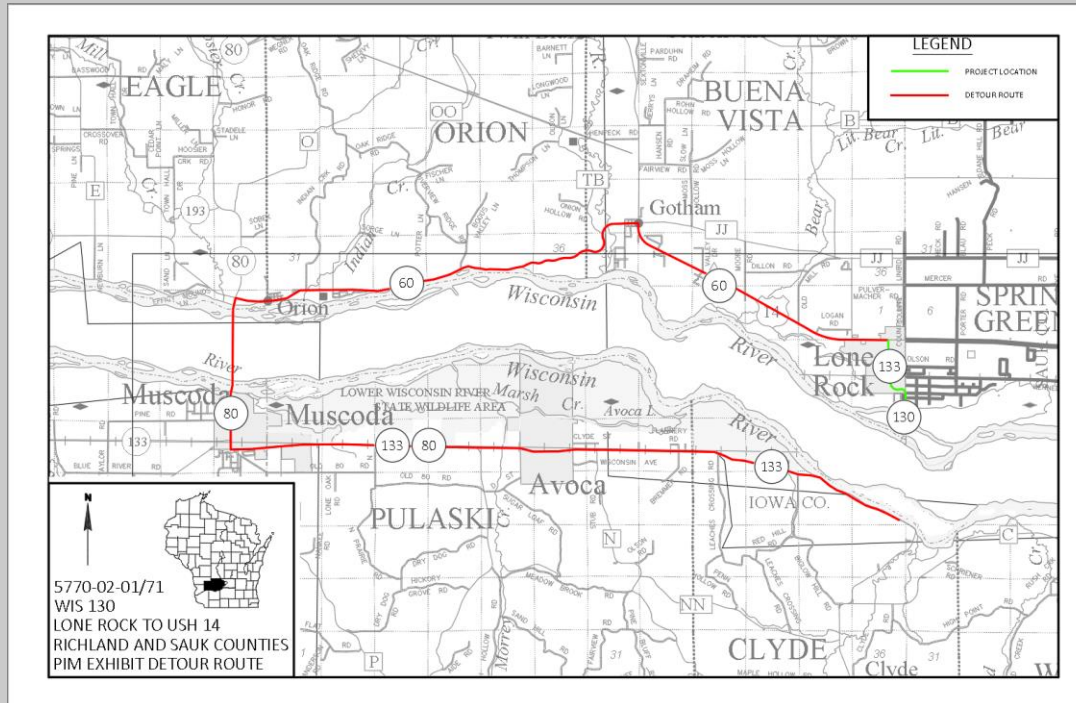
Mill and Overlay



- Daytime work
- Staged Construction
- Roadway open to all lanes during non-working hours



Detour Route



- Detour Route USH 14/WIS 60 to WIS 80 to WIS 133
- Road Closure between Exchange St and Commercial Street
- Duration anticipated to be one week for railroad crossing work

Current project schedule

- 30% Conceptual plans – February 2022
- Environmental document – March 2022
- Preliminary plans – April 2022
- Right of way plat – June 2022
- Real estate negotiations – Fall/Winter 2022 to spring 2023
- Final plans – August 2025 advanceable to May 2024
- Construction currently scheduled – Summer / Fall 2026 advanceable to 2025



Project Design Website

<https://wisconsindot.gov/Pages/projects/by-region/sw/wis130-richlandcounty/default.aspx>

The screenshot shows the website's navigation menu with 'PROJECTS AND STUDIES' selected. A dropdown menu is open, and 'STEP 1' points to 'Highway projects and studies'. The main content area shows 'Highway projects and studies' with a list of links and a map of Wisconsin divided into regions. 'STEP 2' points to the 'Southwest' region. Below, the 'Southwest Region Highway Projects and Studies' page is shown, with 'STEP 3' pointing to 'Design Projects'. 'STEP 4' points to the 'Design Projects' list, and 'STEP 5' points to a specific project entry for 'WIS 130 Wisconsin River Bridge'.

STEP 1 → Highway projects and studies

- Highway projects and studies
- Projects and Studies by mode
- Data and planning resources
- Environmental information
- In This Together
- Life of a highway project
- Six Year Highway Program
- Statewide plans
- Solvency

STEP 2 → Southwest

STEP 3 → Design Projects

STEP 4 → Design Projects

STEP 5 → WIS 130 Wisconsin River Bridge



