



WIS 23, Sauk County

Project: 5060-00-07/77

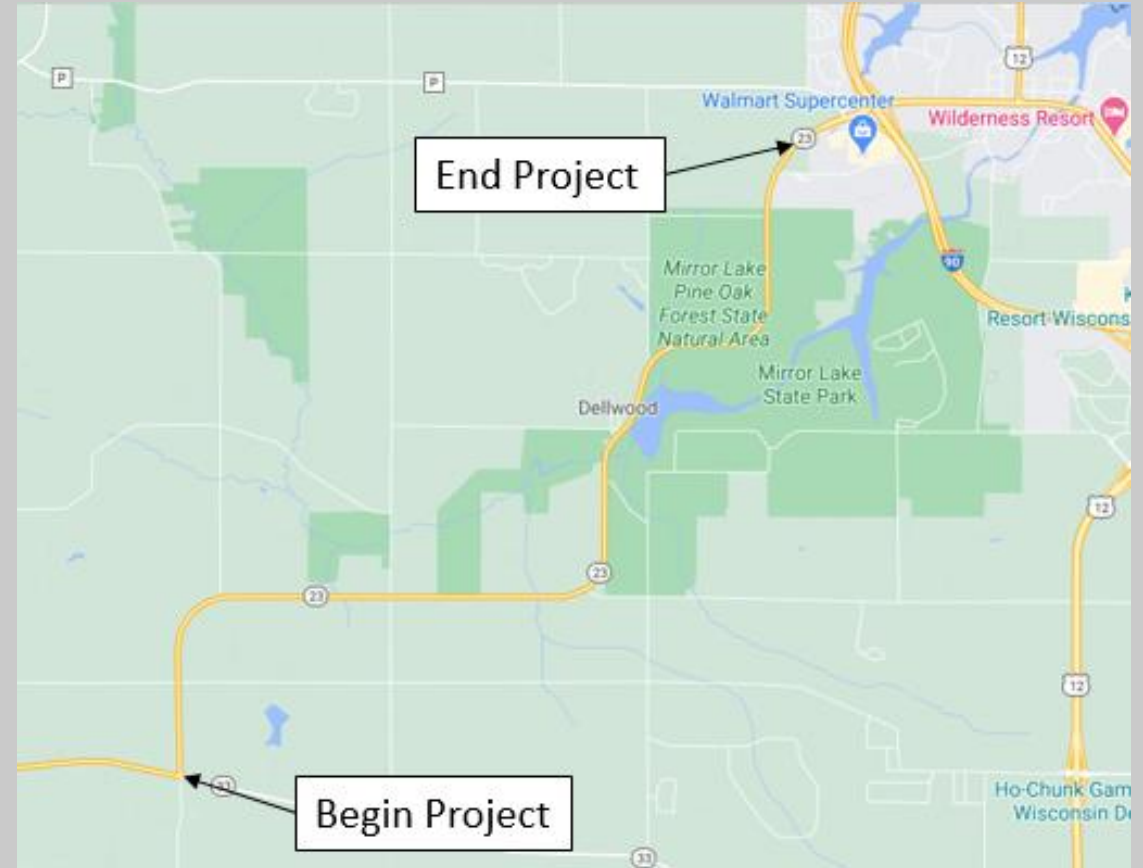
Public Information Meeting

January 2021

Jim Simpson
WisDOT Project Manager

Project Location

- WIS 23, Sauk County
- WIS 33 to 1500' west of County P



Who can I talk with about the project?

- Emily Kendall, WisDOT Designer
- Jim Simpson, WisDOT Project Manager
- Marc Schweiger, WisDOT Project Supervisor

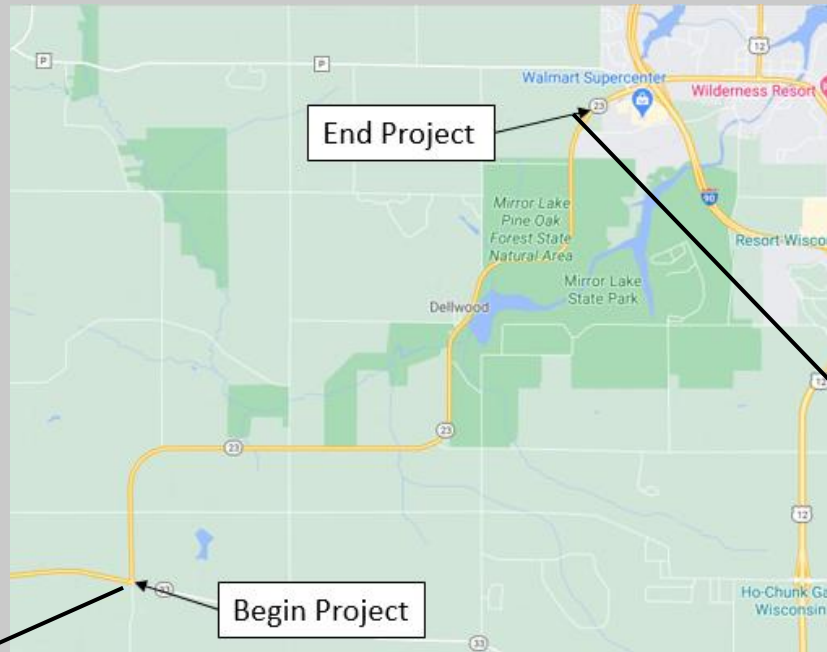


Agenda

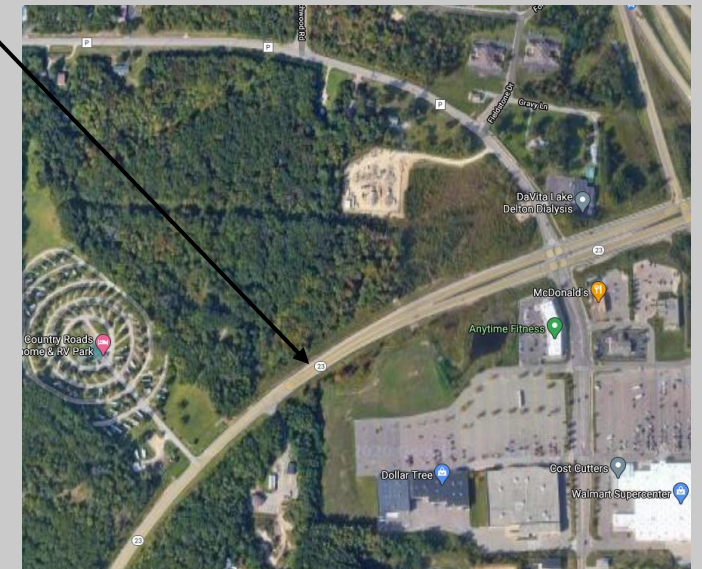
- Project Limits
- Purpose and Need
- Proposed Design Overview
- Upcoming Schedule
- Contact Information



What are the Project Limits?



STH 33/23 Intersection



1500' West of CTH P



What will happen to WIS 23 traffic?

- WIS 23 will remain open to through traffic
- Temporary lane closures utilizing flaggers
- Access to properties and businesses will be maintained



Why do we need this project?

Pavement Deterioration



What improvements are proposed?

- Remove entirety of existing pavement (4.75")
- Replace with 5" of asphalt



Proposed Design Overview

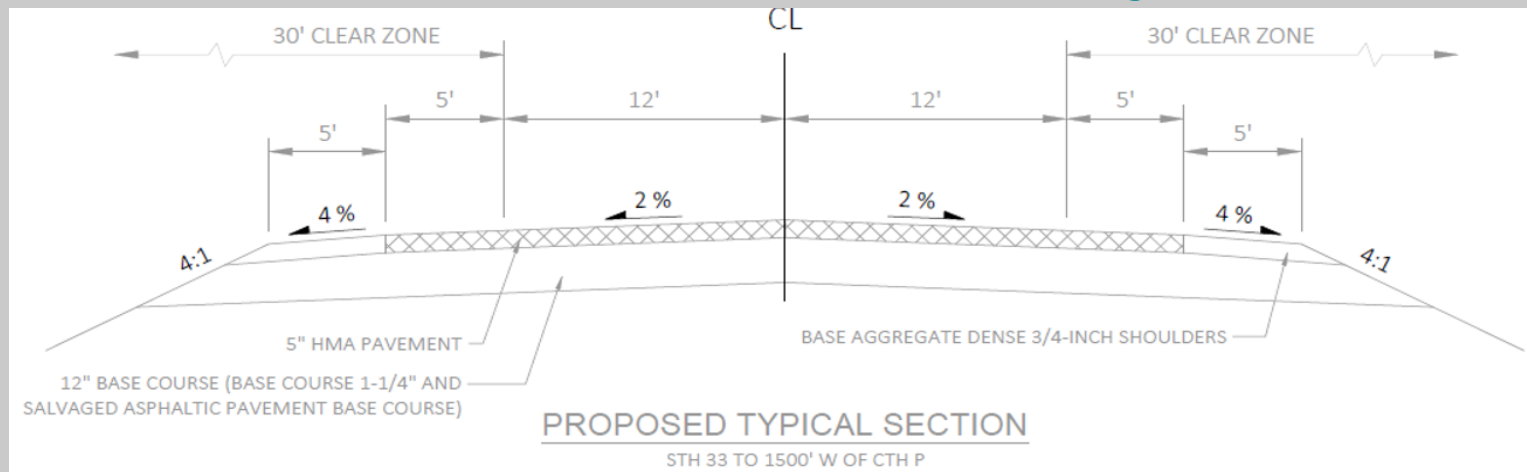
Typical Section – WIS 23

- Pavement

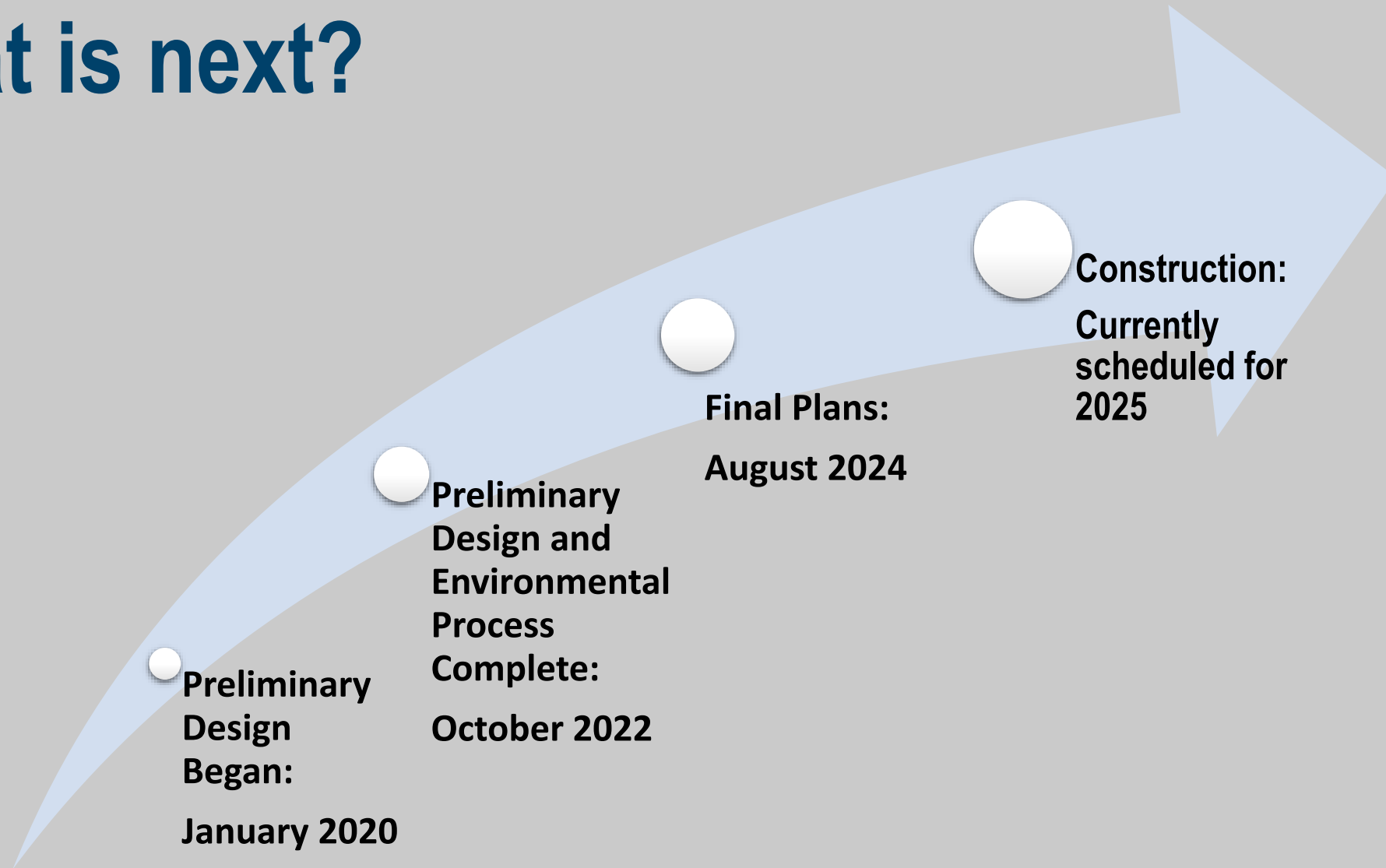
- Milling – 4.75 Inches
- Paving – 5 Inches

- Shoulders

- 5'-6' paved
- Existing curb and gutter and beamguard to remain



What is next?



Thank you for your time!

If you have any comments, questions, or concerns please send us an email, give us a call, or send us mail at 2101 Wright St, Madison, WI 53704.



Project Contact Information

Emily Kendall

Project Designer

WisDOT

Emily.Kendall@dot.wi.gov

(608) 246-3881

Jim Simpson, PE, PLS

Project Manager

WisDOT

Jim.Simpson@dot.wi.gov

(608) 246-5628

Marc Schweiger, PE

Project Supervisor

WisDOT

Marc.Schweiger@dot.wi.gov

(608) 245-2633

