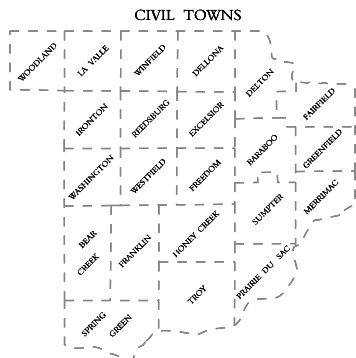


SECTION NUMBERING OF A TOWNSHIP

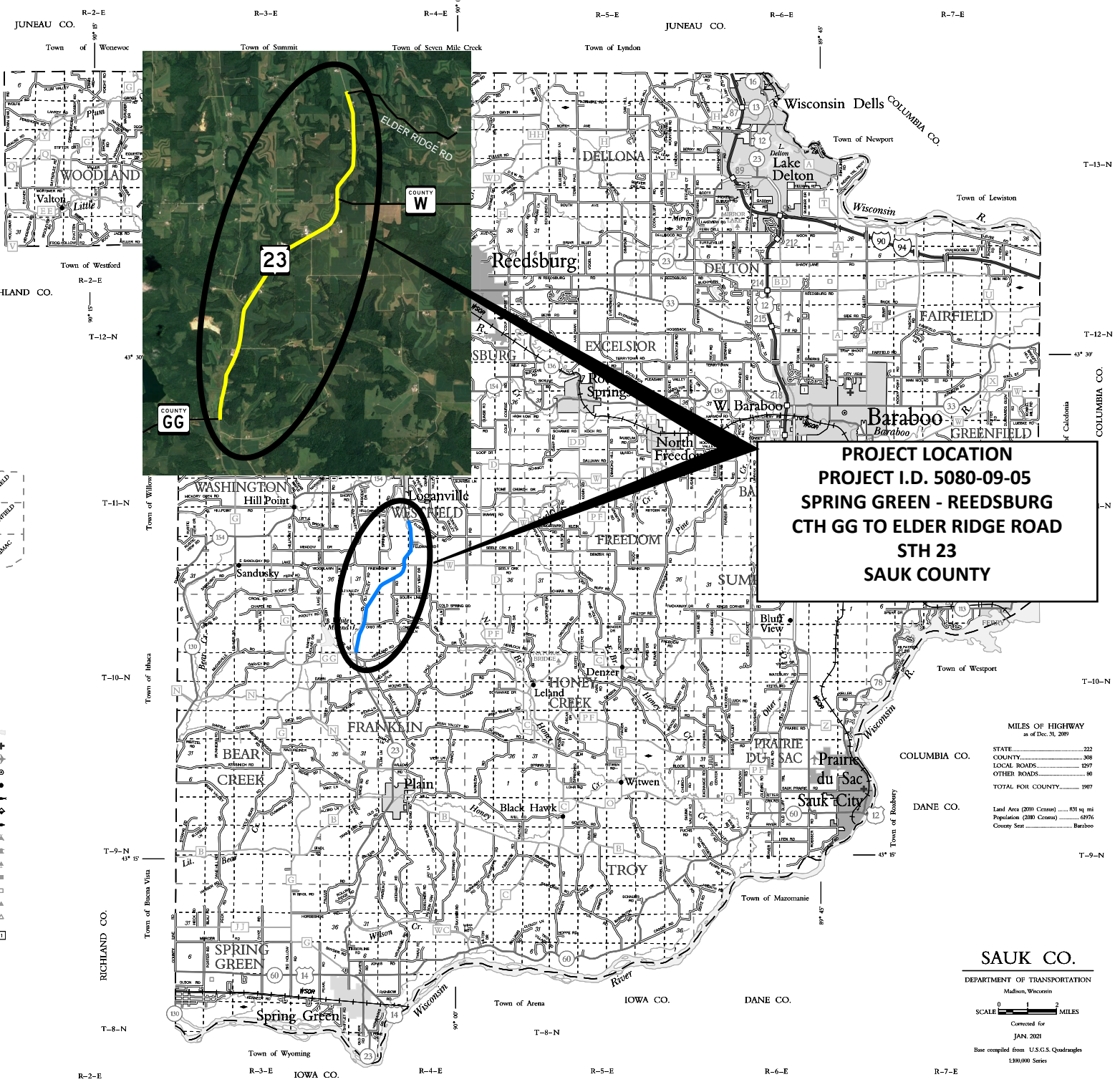
6	5	4	3	2	1
7	8	9	10	11	12
18	17	16	15	14	13
19	20	21	22	23	24
30	29	28	27	26	25
31	32	33	34	35	36



LEGEND

- Freeway
- Multiline Divided
- U.S. or State Hwy
- County Trunk Hwy
- Town Road
- Firelane
- Railroad
- State Trail
- Interchange
- Highway Separation
- Interstate Highway No.
- U.S. Highway No.
- State Highway No.
- County Highway Letter
- State Boundary
- County Boundary
- Civil Town Boundary
- Section Line
- Dam
- Hospital
- Airport
- County Seat
- Unincorporated Village
- Fish Hatchery
- Game Farm
- Public Hunt or Fish Grds.
- Public Camp & Picnic Gnds.
- Ranger Station
- State Park
- County Park
- Without Facilities
- Rest Area
- Modern Facilities
- Wayside
- Basic Facilities
- Units of Wisconsin
- Baraboo/Sauk Co.

For boundaries of public hunting and fishing grounds please contact the Department of Natural Resources



PROJECT LOCATION
PROJECT I.D. 5080-09-05
SPRING GREEN - REEDSBURG
CTH GG TO ELDER RIDGE ROAD
STH 23
SAUK COUNTY

MILES OF HIGHWAY as of Dec. 31, 2009

STATE	222
COUNTY	308
LOCAL ROADS	1207
OTHER ROADS	86
TOTAL FOR COUNTY	1907

Land Area (2000 Census) 831 sq mi
Population (2000 Census) 69976
County Seat Baraboo

SAUK CO.
DEPARTMENT OF TRANSPORTATION
Madison, Wisconsin
SCALE 0 1 2 MILES
Corrected for JAN. 2021
Base compiled from U.S.C.S. Quadrangles 1:80,000 Series