

WIS 39 Project 5970-02-04/74 Hollandale – New Glarus County K to 0.16 MI E of York Center Road

**Wisconsin Department of Transportation
Public Involvement Meeting**

October 2021



Project staff

Kurt Johnson, P.E.

WisDOT Project Development Supervisor

Jim Simpson, P.E., P.L.S

WisDOT Project Manager

Ryan Rudzinski, P.E.

RH Batterman

Consultant Project Manager

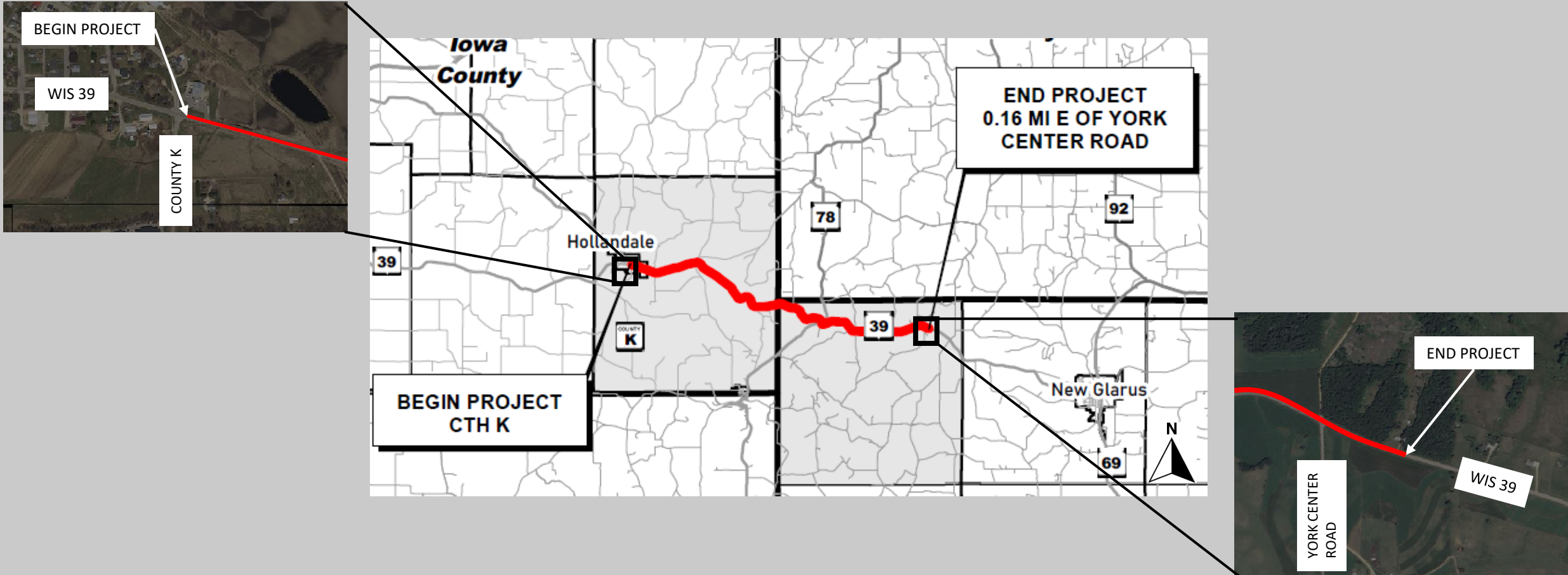


Presentation agenda

- Project limits
- Project purpose and need
- Design overview
- Recent activities
- Upcoming schedule
- Contact information



Project limits



Project purpose and need

Pavement deterioration

- Edge cracking



- Transverse cracking

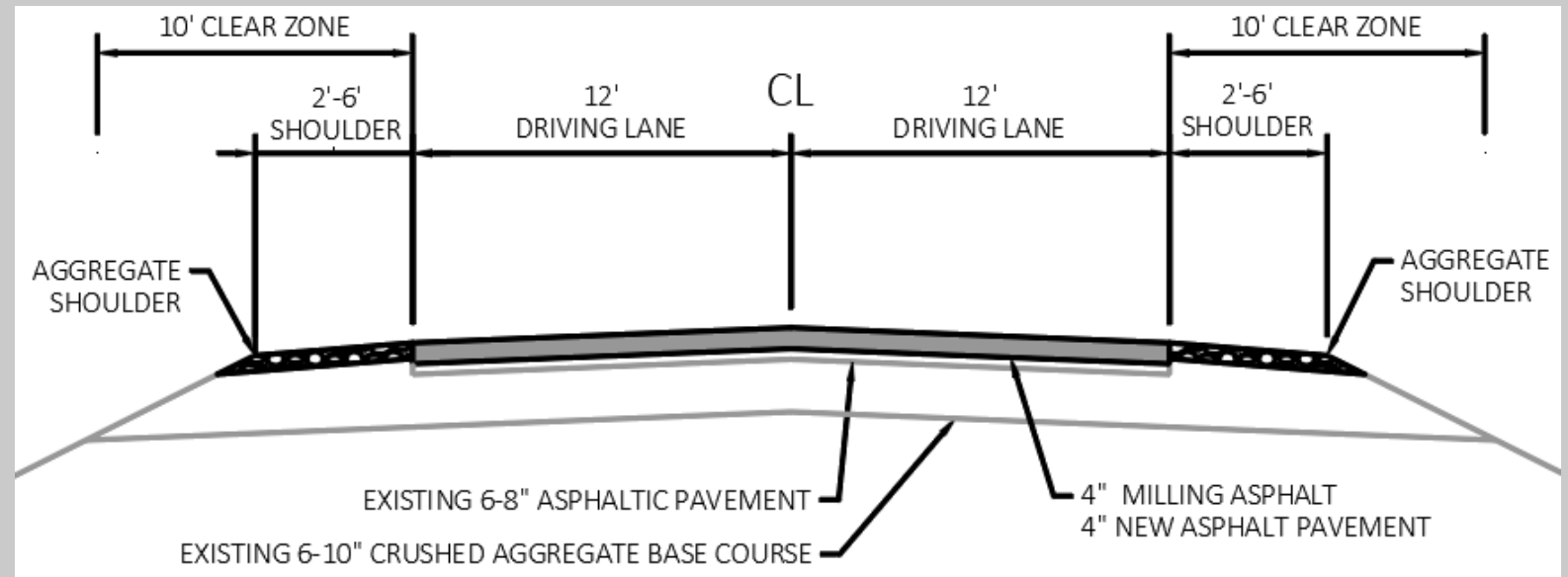
- Longitudinal cracking

Design overview

Roadway improvements

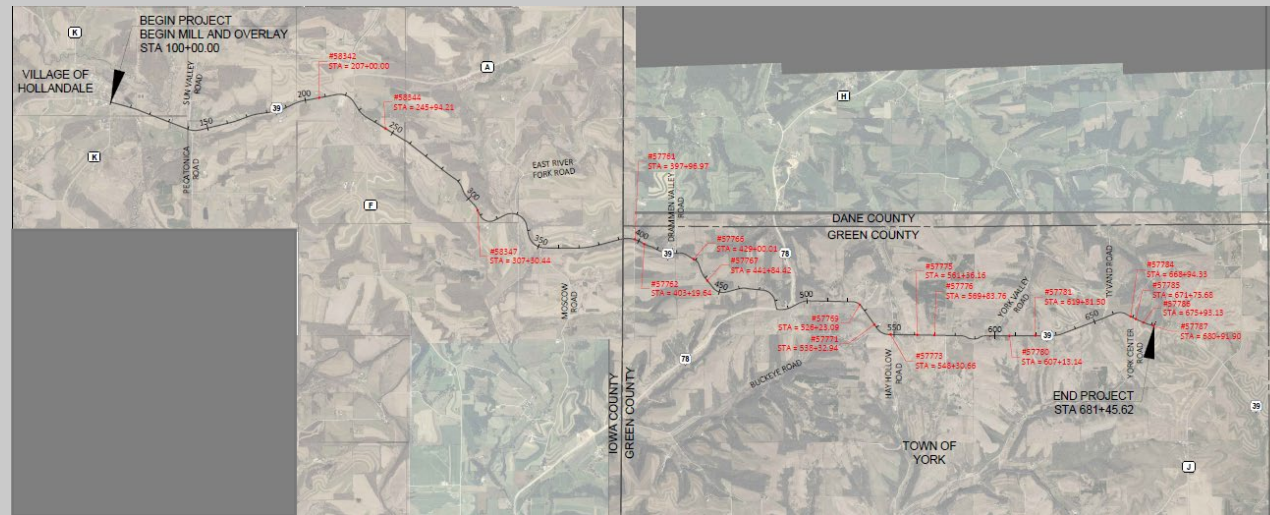
WIS 39 Typical Section

- Pavement
 - Milling – 4 inches
 - Paving – 4 inches
- New shoulder aggregate
- New pavement markings



Design overview

Replace 16 deteriorating culverts



- Corrosion and holes

- Corrosion and undermining

Recent activity

- 2020
 - Survey completed
 - Culverts inspected

- 2021
 - Initial agency coordination completed
 - Preliminary plans completed
 - Draft environmental report completed



Upcoming schedule

- Environmental report signed December 2021
- Real estate August 2022
 - Acquisition of new right of way and/or temporary limited easements
- Final plans August 2024
- Construction Scheduled 2025



Thank you for your time

If you have any comments, questions, or concerns please send us an email, give us a call, or send us mail at

2101 Wright St, Madison, WI 53704



Project contact information

Kurt Johnson, P.E.

Kurt.Johnson@dot.wi.gov

(608) 246-5358

Jim Simpson, P.E., P.L.S

Jim.Simpson@dot.wi.gov

(608) 246-5628

Ryan Rudzinski, P.E.

RRudzinski@rhbatterman.com

(608) 365-4464

