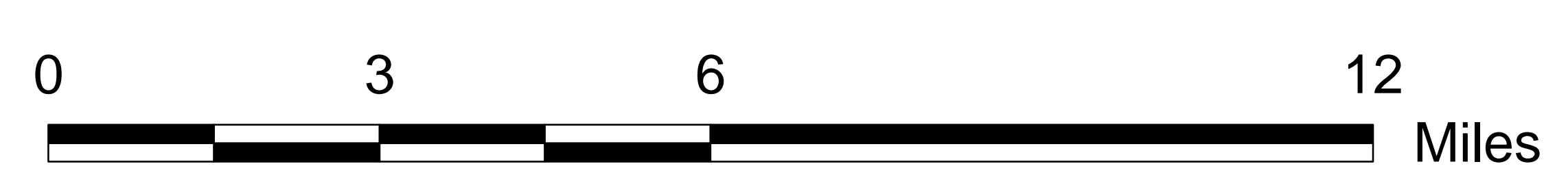
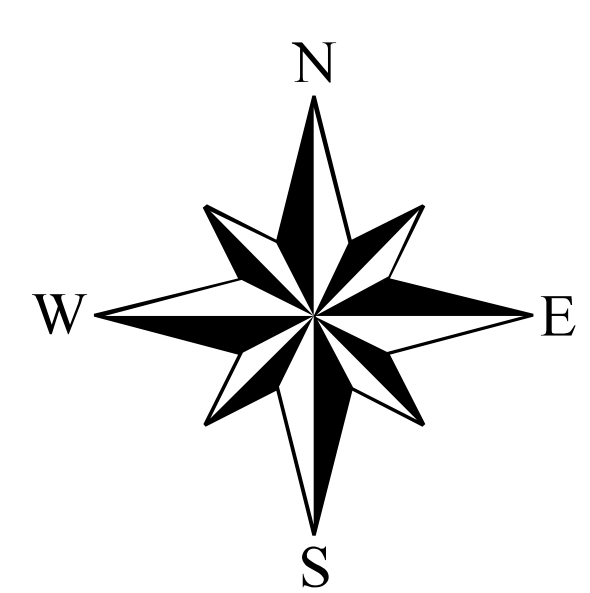
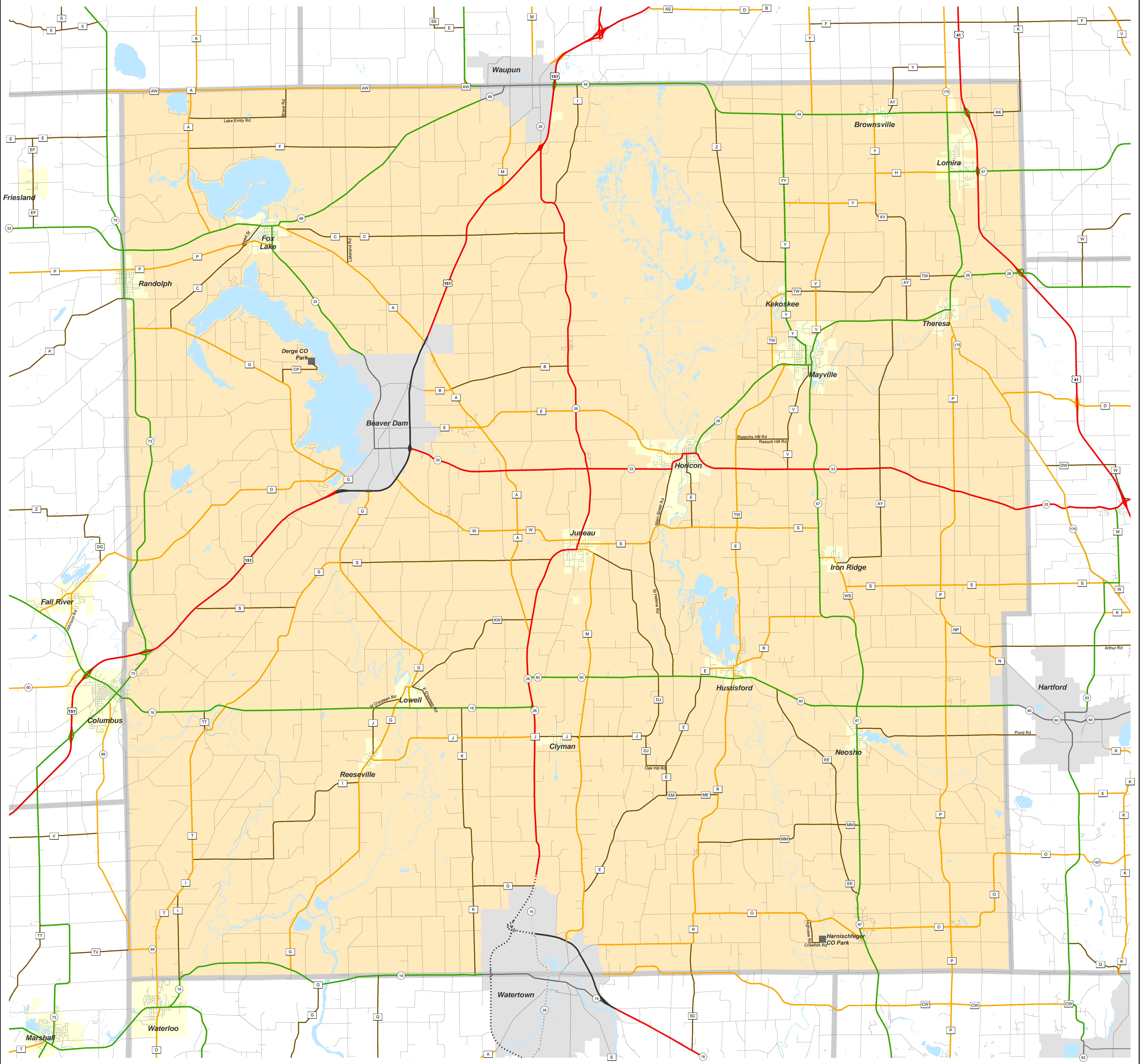


# DODGE

## Functional Classification      03/06/2012

DODGE



Legend	
<b>Existing</b>	<b>Planned</b>
<span style="color: red;">—</span> Principal Arterial	<span style="color: red;">- - - - -</span> Principal Arterial
<span style="color: green;">—</span> Minor Arterial	<span style="color: green;">- - - - -</span> Minor Arterial
<span style="color: orange;">—</span> Major Collector	<span style="color: orange;">- - - - -</span> Major Collector
<span style="color: brown;">—</span> Minor Collector	<span style="color: brown;">- - - - -</span> Minor Collector
<span style="color: grey;">—</span> Minor Collector classified using small community criteria and all Local	<span style="color: grey;">- - - - -</span> Minor Collector classified using small community criteria and all Local
Railroads	Lakes, Rivers, Streams
City or Village Limits	Urbanized Area

(In urban areas, only connecting links of rural routes are shown).

The information on these maps and produced from these maps was created for the official use of the Wisconsin Department of Transportation (WisDOT). Any other use, while not prohibited, is the sole responsibility of the user. WisDOT expressly disclaims all liability regarding fitness of use of the information for other than official WisDOT business.

# DODGE

## Chart “C” Communities

### Page

- 3 Fox Lake
- 4 Horicon
- 5 Juneau
- 6 Lomira
- 7 Mayville
- 8 Randolph

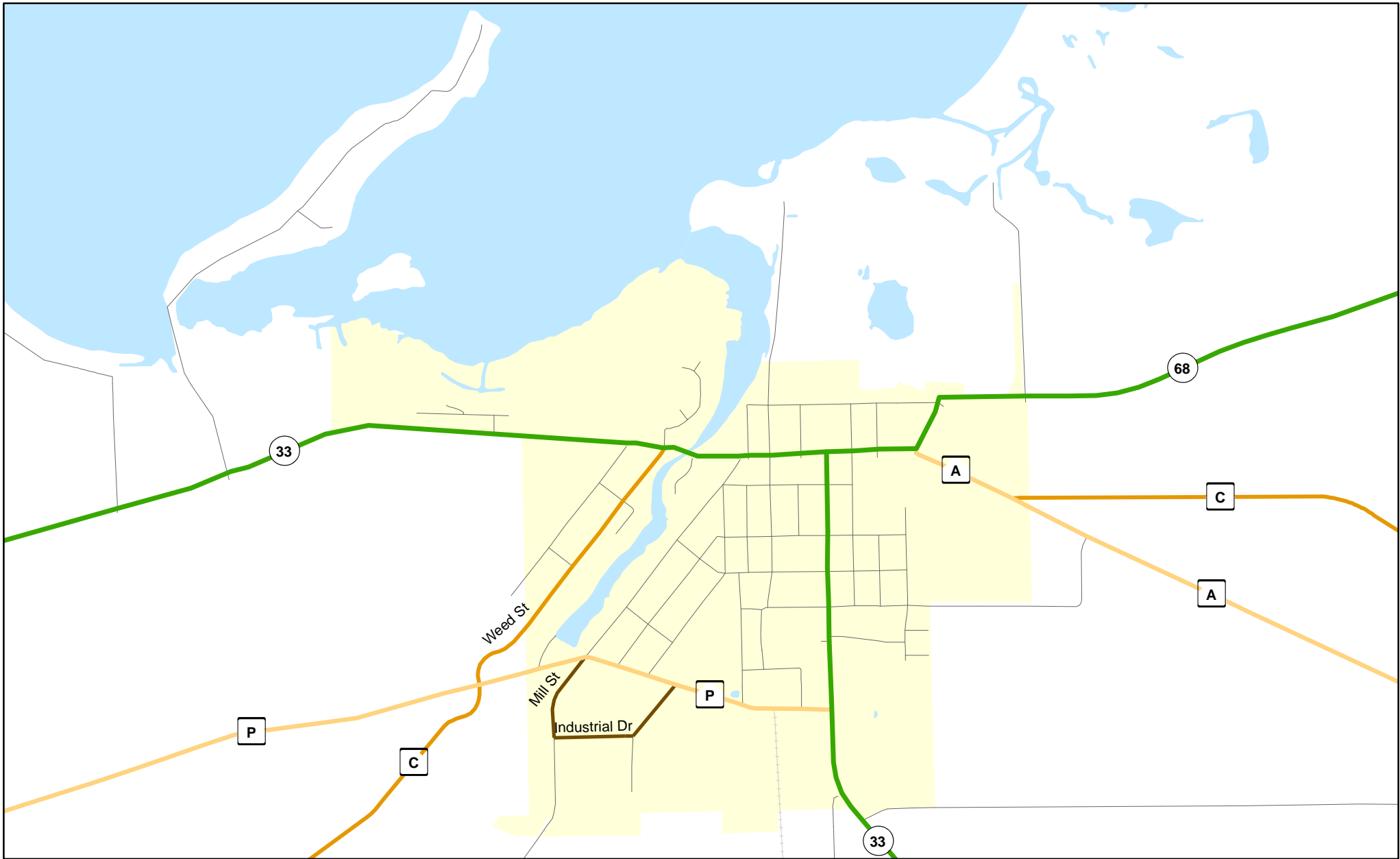


# Chart C Community: FOX LAKE

County: Dodge

Functional Classification

03/06/2012



## Functional Classification

- Principal Arterial
- Minor Arterial
- Major Collector
- Minor Collector
- Chart C Minor Collector
- planned Principal Arterial
- planned Minor Arterial
- planned Major Collector
- planned Minor Collector

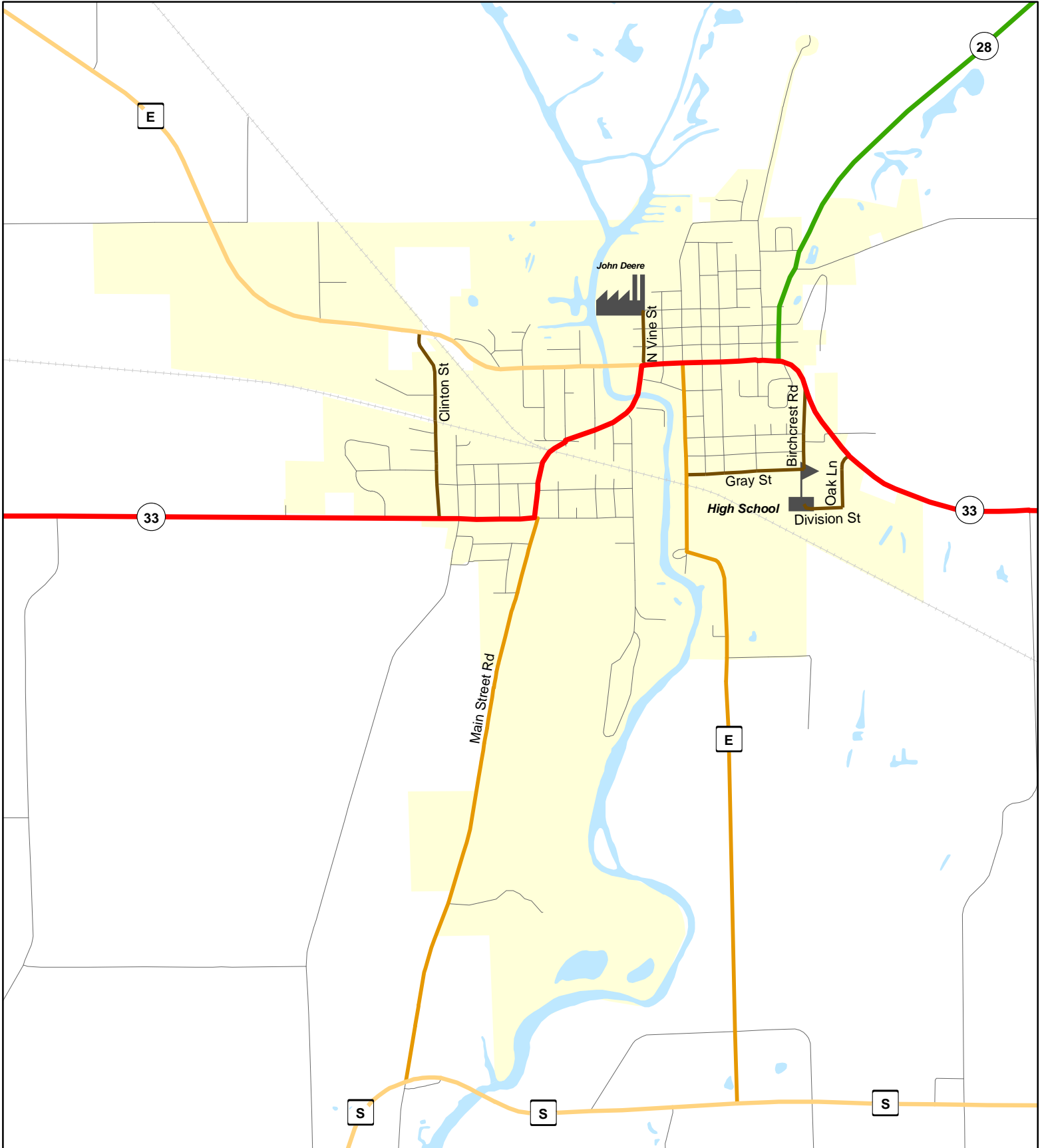
WisDOT Bureau of Planning and Economic Development  
FHWA approval: 03/06/2012  
PDF created: 11/21/2011

**Chart C Community: FOX LAKE**  
**County: Dodge**



# Chart C Community: HORICON County: Dodge

Functional Classification 03/06/2012



### Functional Classification

- Principal Arterial
- Minor Arterial
- Major Collector
- Minor Collector
- Chart C Minor Collector
- planned Principal Arterial
- planned Minor Arterial
- planned Major Collector
- planned Minor Collector

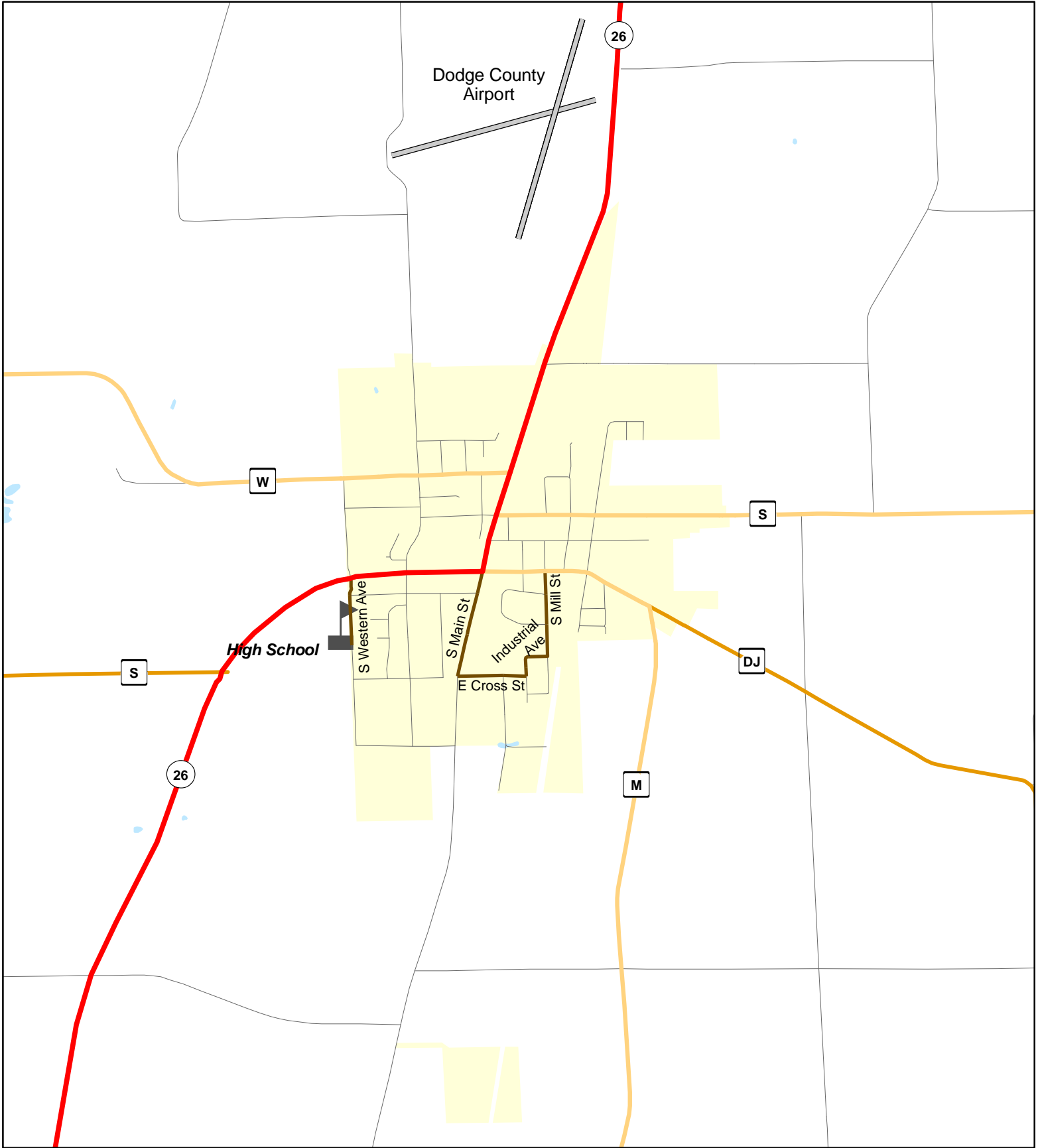
WisDOT Bureau of Planning and Economic Development  
FHWA approval: 03/06/2012  
PDF created: 11/21/2011

**Chart C Community: HORICON  
County: Dodge**

**Chart C Community: JUNEAU  
County: Dodge**

**Functional Classification**

**03/06/2012**



**Functional Classification**

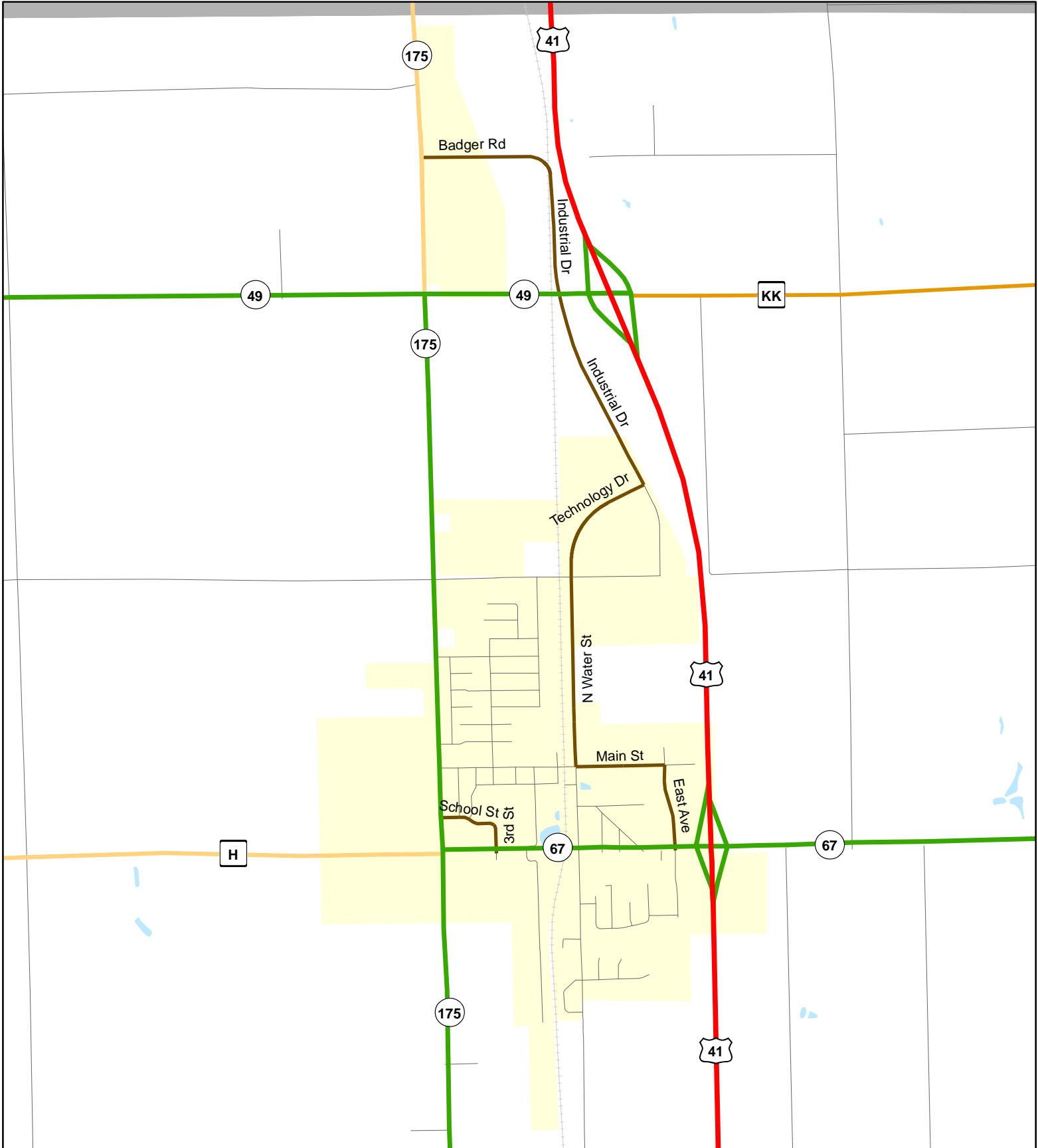
- Principal Arterial
- Minor Arterial
- Major Collector
- Minor Collector
- Chart C Minor Collector
- planned Principal Arterial
- planned Minor Arterial
- planned Major Collector
- planned Minor Collector

WisDOT Bureau of Planning and Economic Development  
FHWA approval: 03/06/2012  
PDF created: 11/21/2011

**Chart C Community: JUNEAU  
County: Dodge**

**Chart C Community: LOMIRA  
County: Dodge**

**Functional Classification 03/06/2012**



**Functional Classification**

- Principal Arterial
- Minor Arterial
- Major Collector
- Minor Collector
- Chart C Minor Collector
- planned Principal Arterial
- planned Minor Arterial
- planned Major Collector
- planned Minor Collector

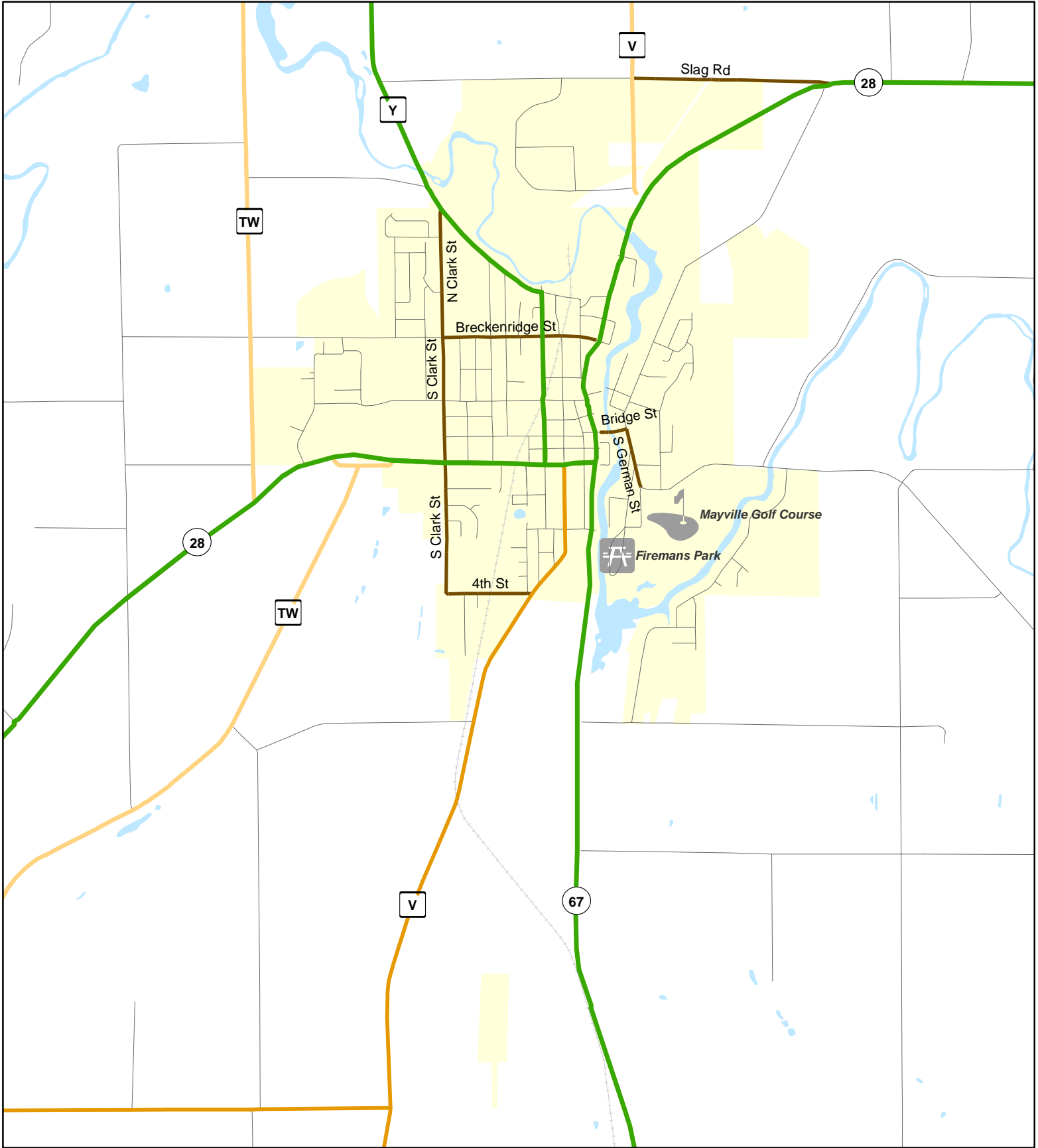
WisDOT Bureau of Planning and Economic Development  
FHWA approval: 03/06/2012  
PDF created: 11/21/2011

**Chart C Community: LOMIRA  
County: Dodge**



# Chart C Community: MAYVILLE County: Dodge

Functional Classification 03/06/2012



### Functional Classification

- Principal Arterial
- Minor Arterial
- Major Collector
- Minor Collector
- Chart C Minor Collector
- - planned Principal Arterial
- - planned Minor Arterial
- - planned Major Collector
- - planned Minor Collector

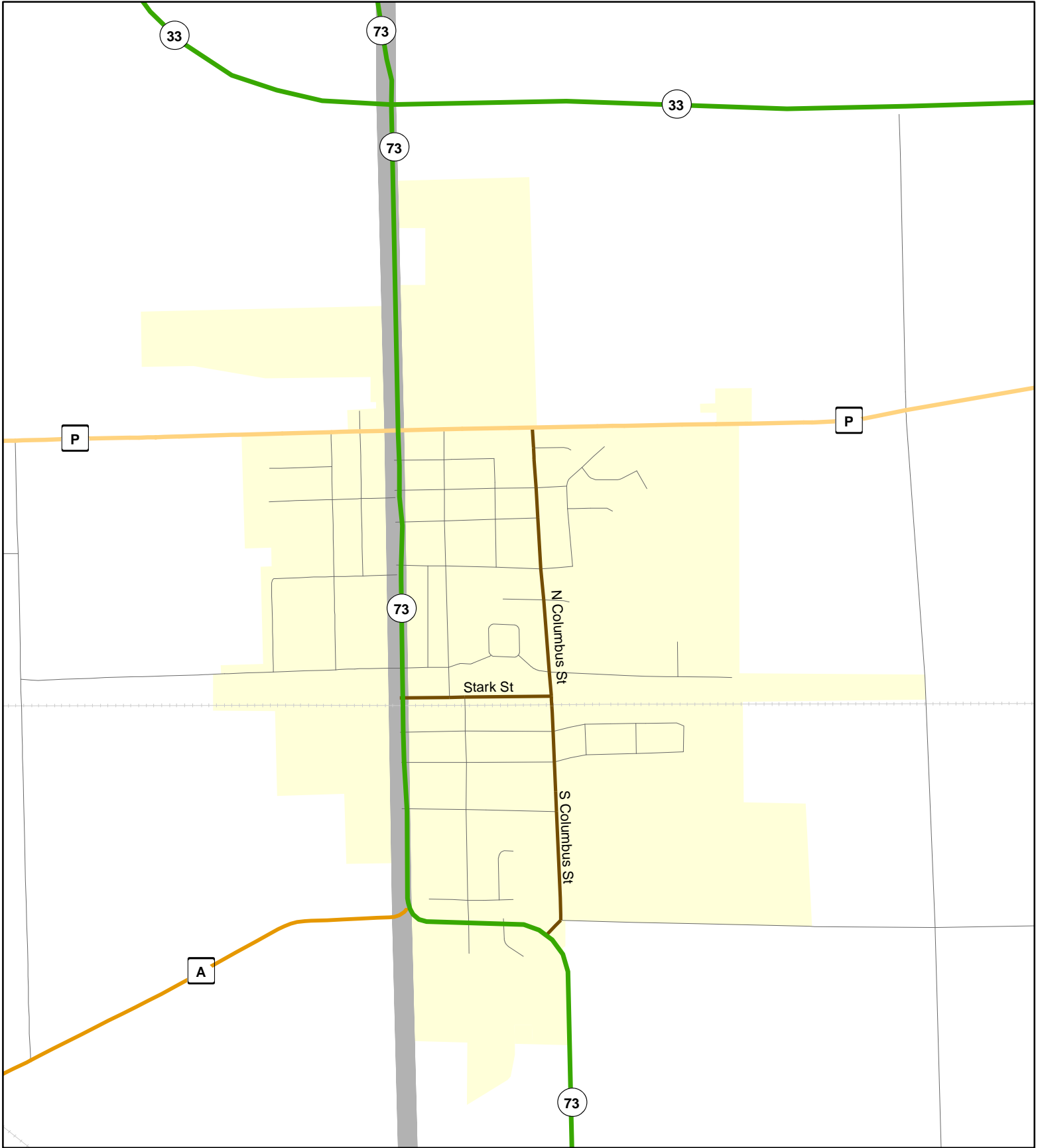
WisDOT Bureau of Planning and Economic Development  
FHWA approval: 03/06/2012  
PDF created: 11/21/2011

## Chart C Community: MAYVILLE County: Dodge



# Chart C Community: Randolph County: Dodge

Functional Classification 03/06/2012



### Functional Classification

- Principal Arterial
- Minor Arterial
- Major Collector
- Minor Collector
- Chart C Minor Collector
- planned Principal Arterial
- planned Minor Arterial
- planned Major Collector
- planned Minor Collector

WisDOT Bureau of Planning and Economic Development  
FHWA approval: 03/06/2012  
PDF created: 11/21/2011

**Chart C Community: RANDOLPH  
County: Dodge**