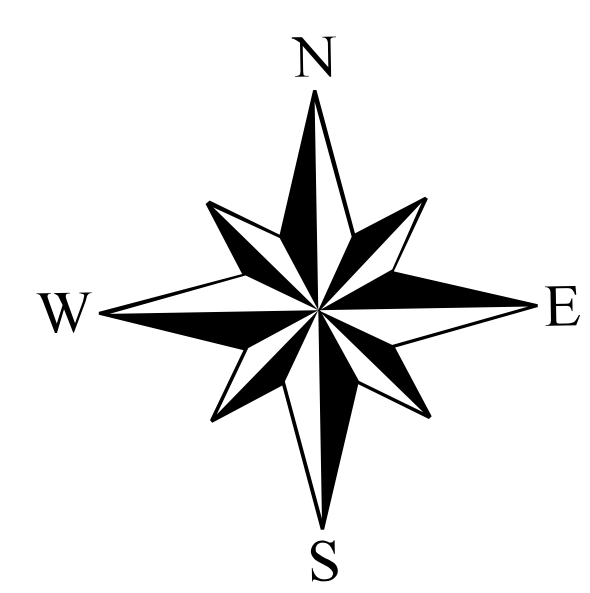
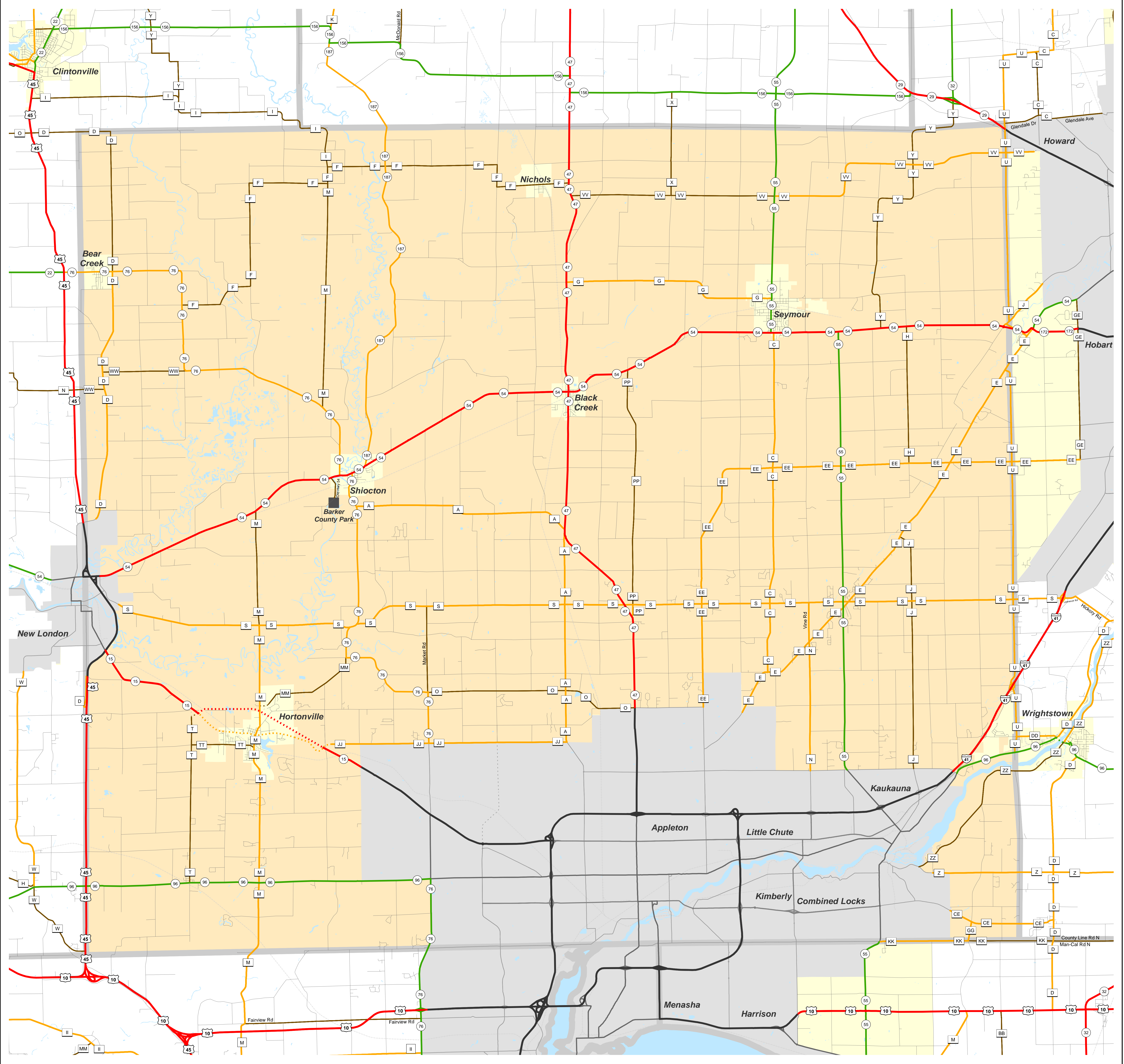


OUTAGAMIE

Functional Classification 08/11/2016

OUTAGAMIE



Legend		Other
Existing	Planned*	
— Principal Arterial	- - - - Principal Arterial	Railroads
— Minor Arterial	- - - - Minor Arterial	Lakes, Rivers, Streams
— Major Collector	- - - - Major Collector	City/Village Boundary
— Minor Collector	- - - - Minor Collector	Urban (ized) Area
- - - - Minor Collector classified using small community criteria and Local		

* NOTE: In urban (ized) areas, only urban connecting links of rural classified routes and urban non-connecting link principal arterials are shown.
All planned route locations are approximations only.

The information on these maps and produced from these maps was created for the official use of the Wisconsin Department of Transportation (WisDOT). Any other use, while not prohibited, is the sole responsibility of the user. WisDOT expressly disclaims all liability regarding fitness of use of the information for other than official WisDOT business.

OUTAGAMIE

Chart “C” Communities

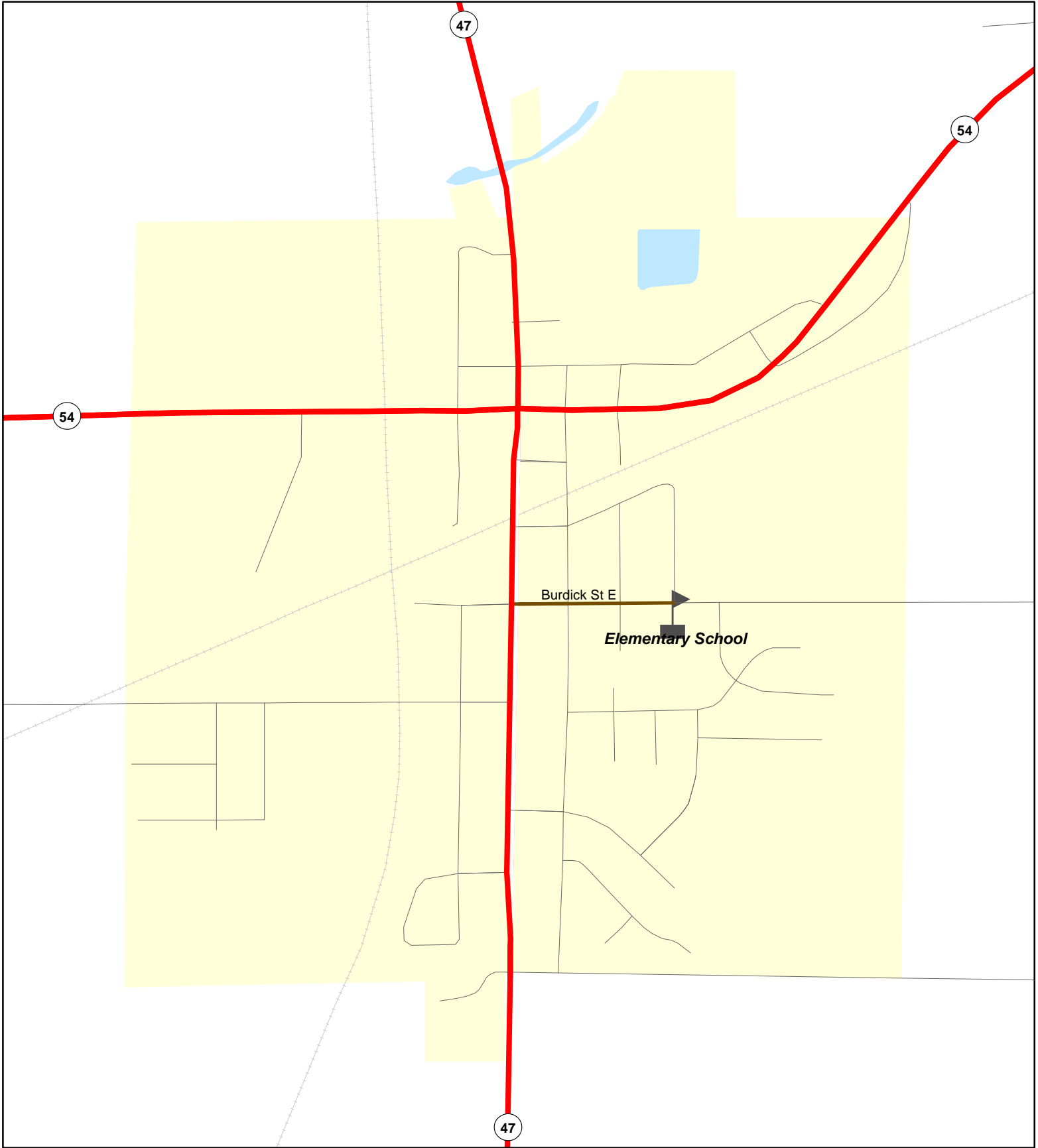
Page

- 3 Black Creek
- 4 Hortonville
- 5 Seymour
- 6 Shiocton
- 7 Wrightstown



Chart C Community: BLACK CREEK
County: Outagamie

Functional Classification **08/11/2016**



Functional Classification

- | | | | | |
|----------------------------|------------------------|-------------------------|-------------------------|-------------------------|
| Principal Arterial | Minor Arterial | Major Collector | Minor Collector | Chart C Minor Collector |
| planned Principal Arterial | planned Minor Arterial | planned Major Collector | planned Minor Collector | |

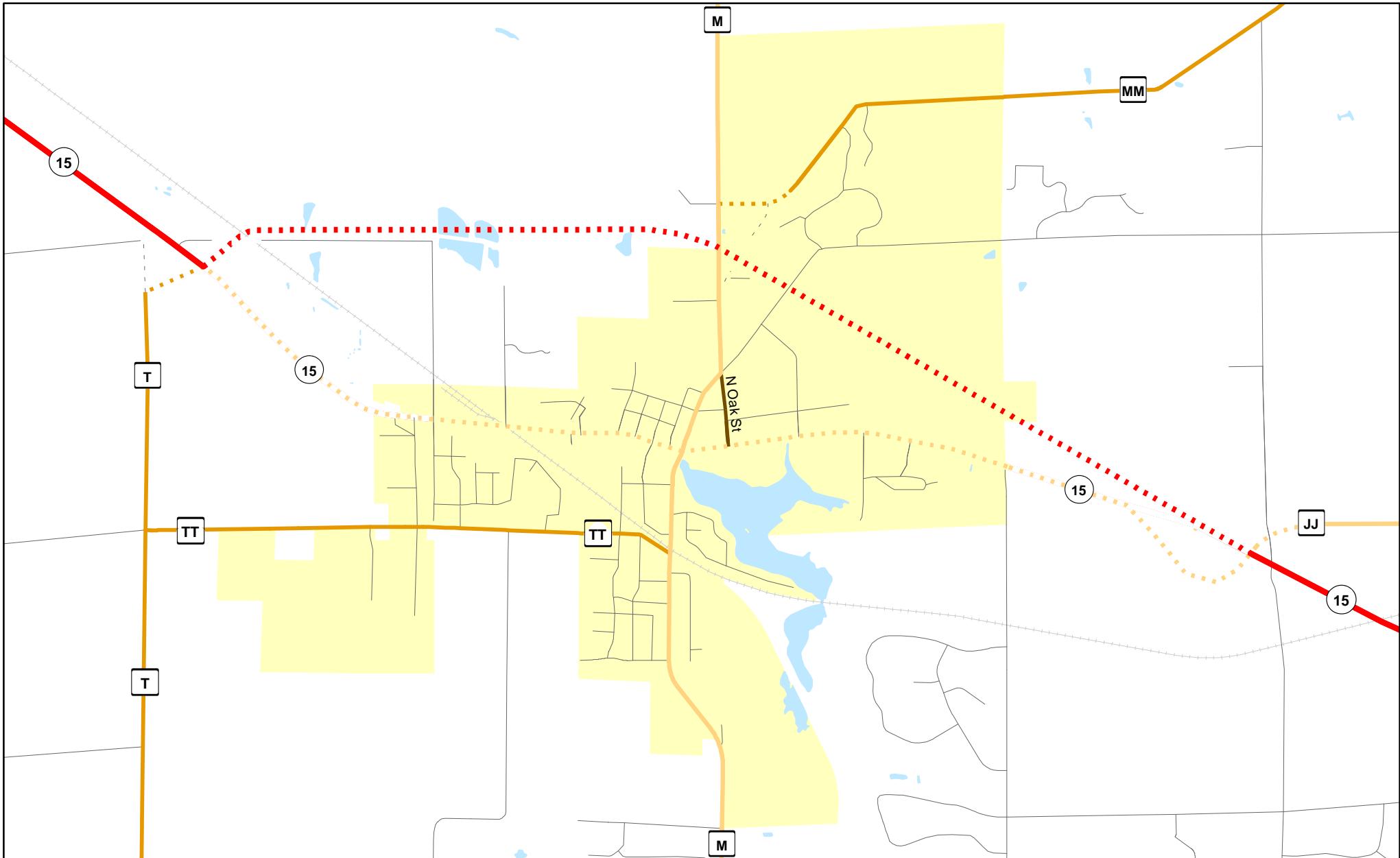
WisDOT Bureau of Planning and Economic Development
FHWA approval: 08/11/2016
PDF created: 04/20/2016

Chart C Community: BLACK CREEK
County: Outagamie



Chart C Community: HORTONVILLE
County: Outagamie

Functional Classification 08/11/2016



Functional Classification

- Principal Arterial
- Minor Arterial
- Major Collector
- Chart C Minor Collector
- - - planned Principal Arterial
- - - planned Minor Arterial
- - - planned Major Collector
- - - planned Minor Collector

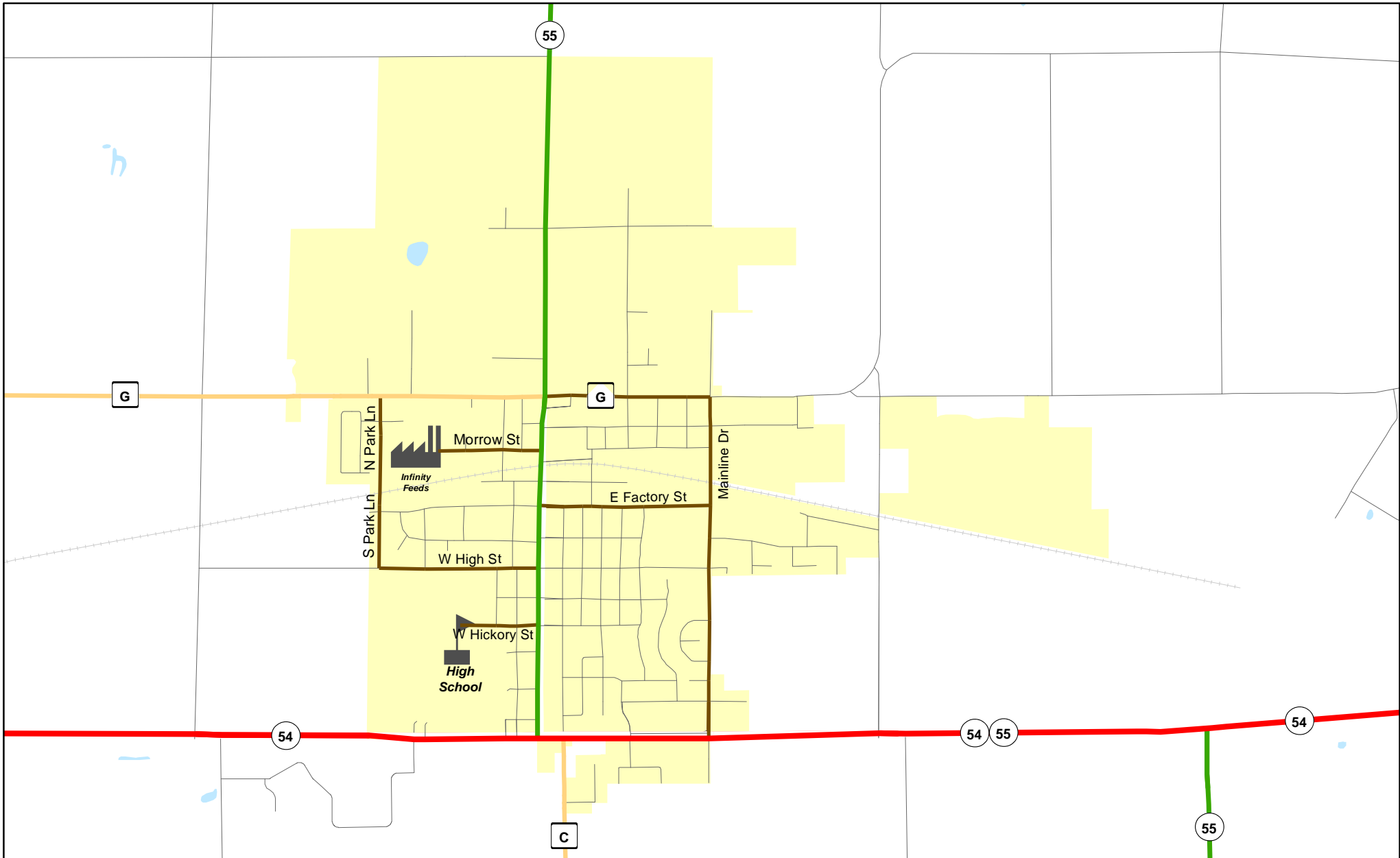
WisDOT Bureau of Planning and Economic Development
FHWA approval: 08/11/2016
PDF created: 04/20/2016

Chart C Community: HORTONVILLE
County: Outagamie



Chart C Community: SEYMOUR
County: Outagamie

Functional Classification **08/11/2016**



Functional Classification

- Principal Arterial
- Minor Arterial
- Major Collector
- Minor Collector
- Chart C Minor Collector
- - - planned Principal Arterial
- - - planned Minor Arterial
- - - planned Major Collector
- - - planned Minor Collector

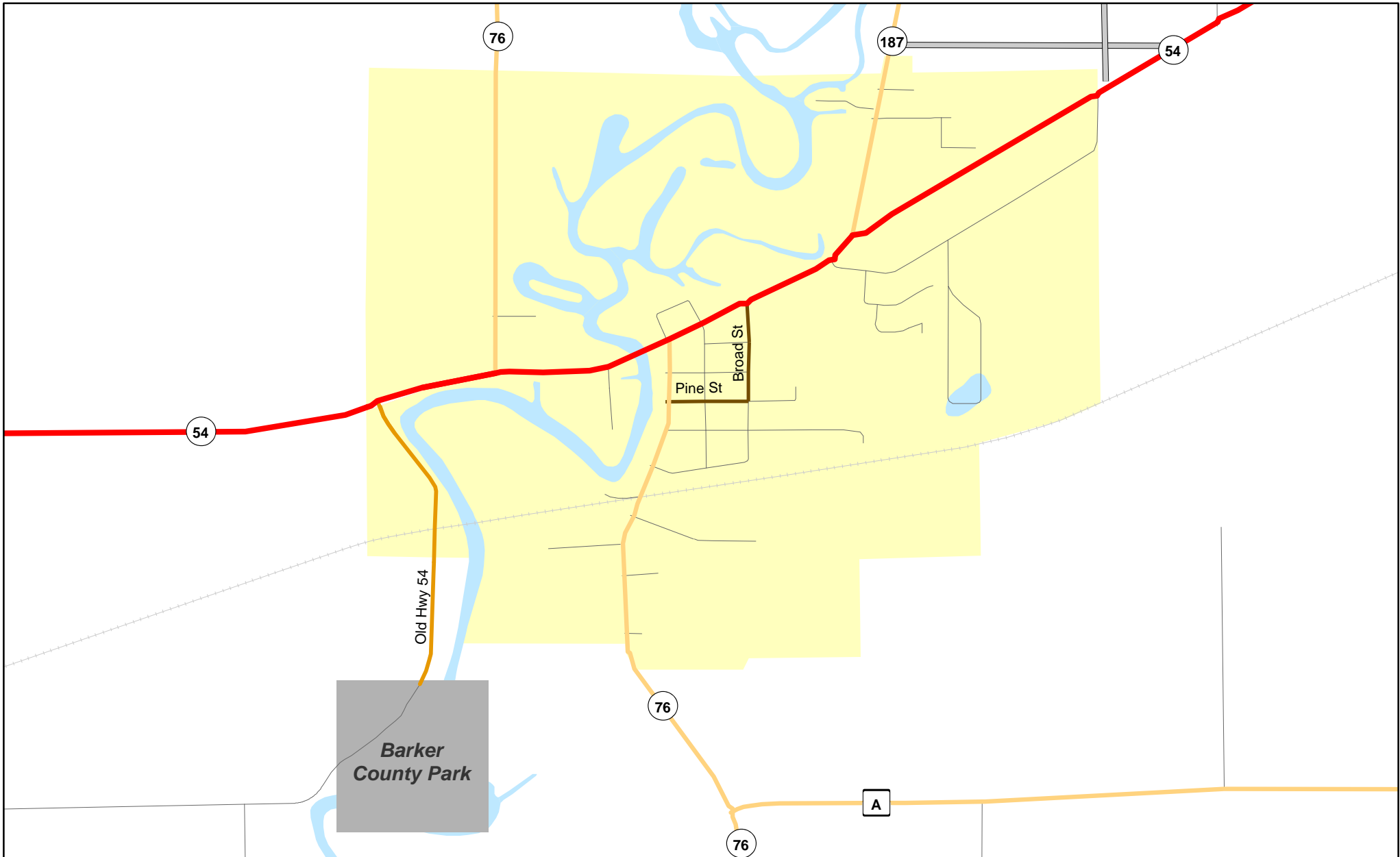
WisDOT Bureau of Planning and Economic Development
FHWA approval: 08/11/2016
PDF created: 04/20/2016

Chart C Community: SEYMOUR
County: Outagamie



Chart C Community: SHIOCTON
County: Outagamie

Functional Classification **08/11/2016**



Functional Classification

- Principal Arterial
- Minor Arterial
- Major Collector
- Minor Collector
- Chart C Minor Collector
- - - planned Principal Arterial
- - - planned Minor Arterial
- - - planned Major Collector
- - - planned Minor Collector

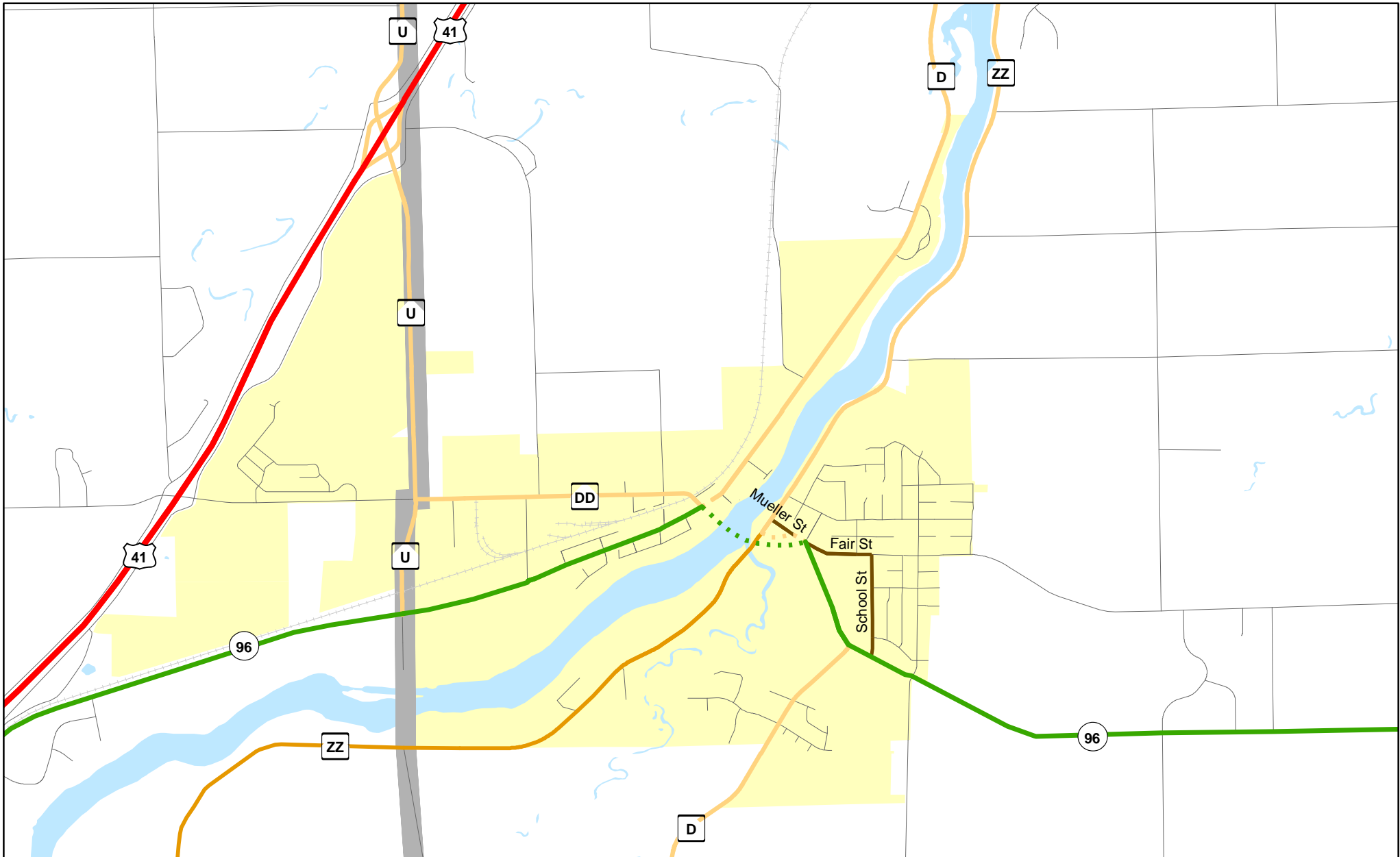
WisDOT Bureau of Planning and Economic Development
FHWA approval: 08/11/2016
PDF created: 04/20/2016

Chart C Community: SHIOCTON
County: Outagamie



Chart C Community: WRIGHTSTOWN
County: Brown/Outagamie

Functional Classification **08/11/2016**



Functional Classification

- Principal Arterial
- Minor Arterial
- Major Collector
- Minor Collector
- Chart C Minor Collector
- - - planned Principal Arterial
- - - planned Minor Arterial
- - - planned Major Collector
- - - planned Minor Collector

WisDOT Bureau of Planning and Economic Development
FHWA approval: 08/11/2016
PDF created: 04/20/2016

Chart C Community: WRIGHTSTOWN
County: Brown/Outagamie

OUTAGAMIE COUNTY

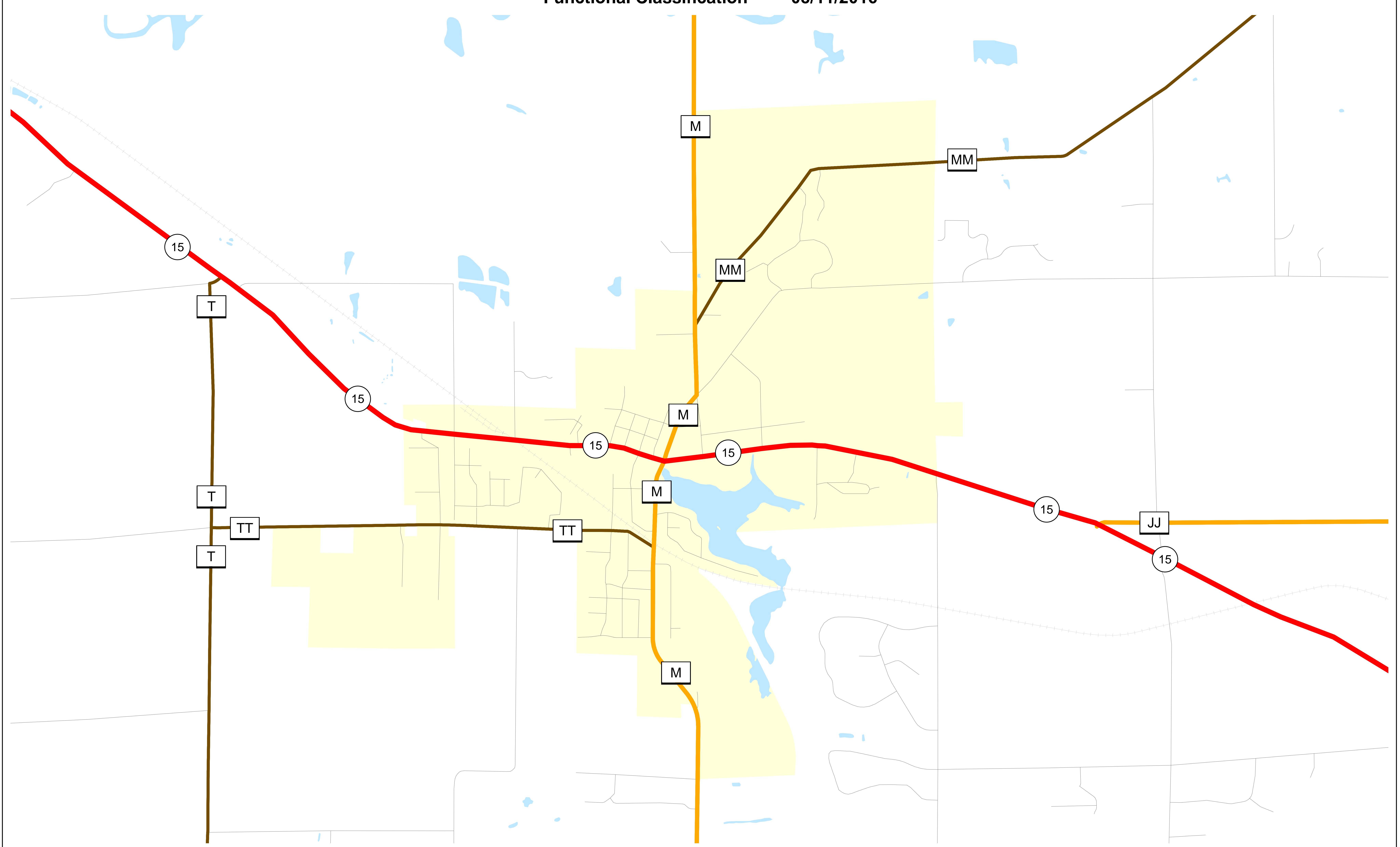
Existing function detail map(s) for planned routes

Page

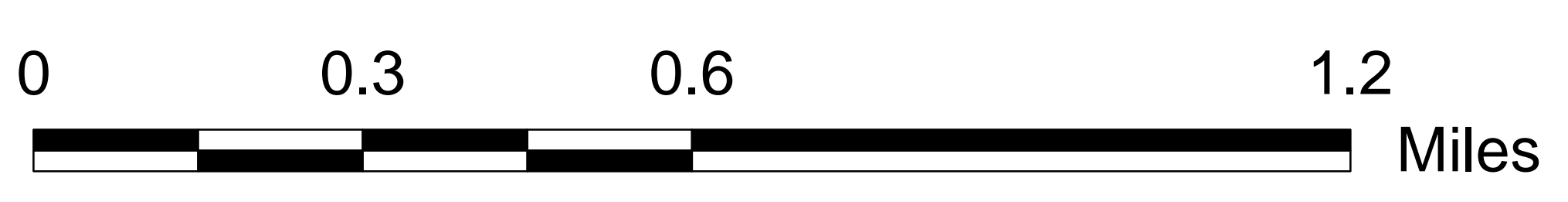
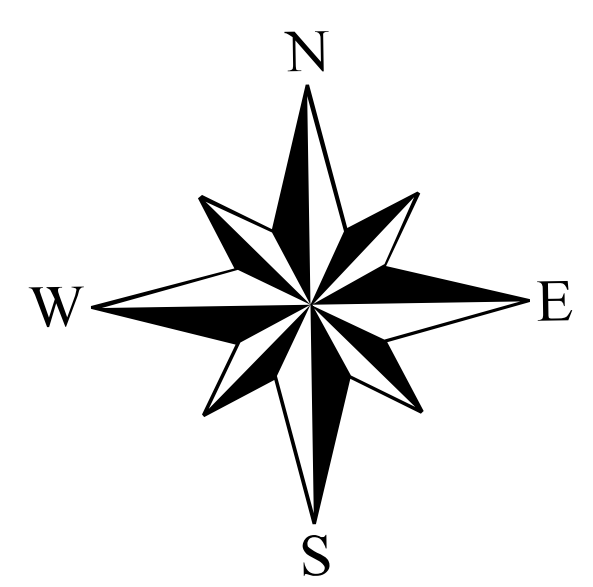
9 STH 15 bypass of Hortonville

OUTAGAMIE COUNTY (existing function detail: STH 15 bypass of Hortonville)

Functional Classification 08/11/2016



OUTAGAMIE COUNTY (existing function detail: STH 15 bypass of Hortonville)



Existing		Planned*		Other	
	Principal Arterial		Principal Arterial		Railroads
	Minor Arterial		Minor Arterial		Lakes, Rivers, Streams
	Collector		Collector		City/Village Boundary
	Local		Local		Urban(ized) Area
					Other surrounding urban(ized) area
					Rural Area
					County Boundary

* NOTE:
All planned route locations are approximations only.