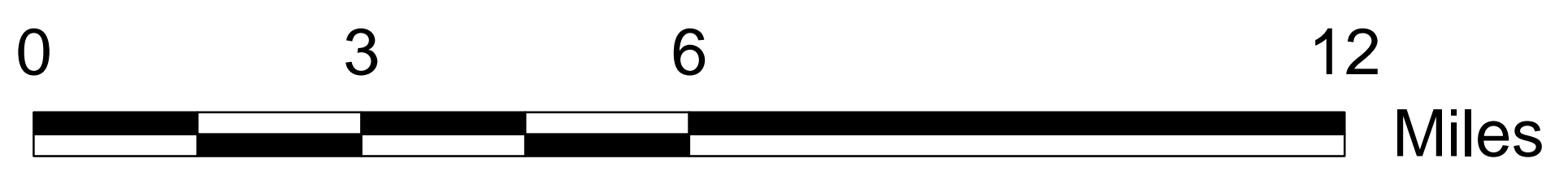
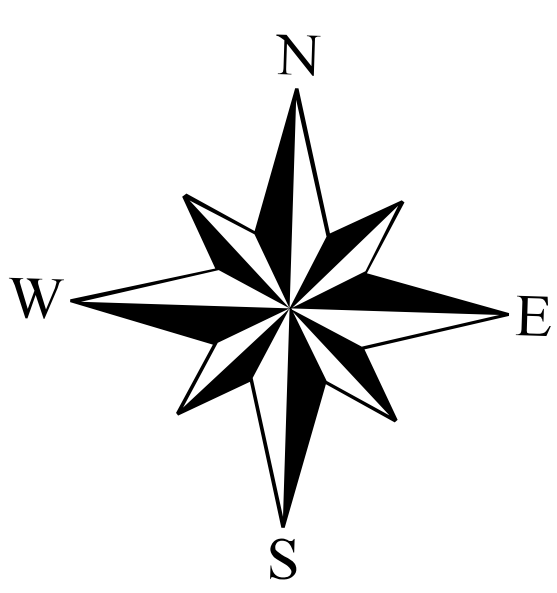
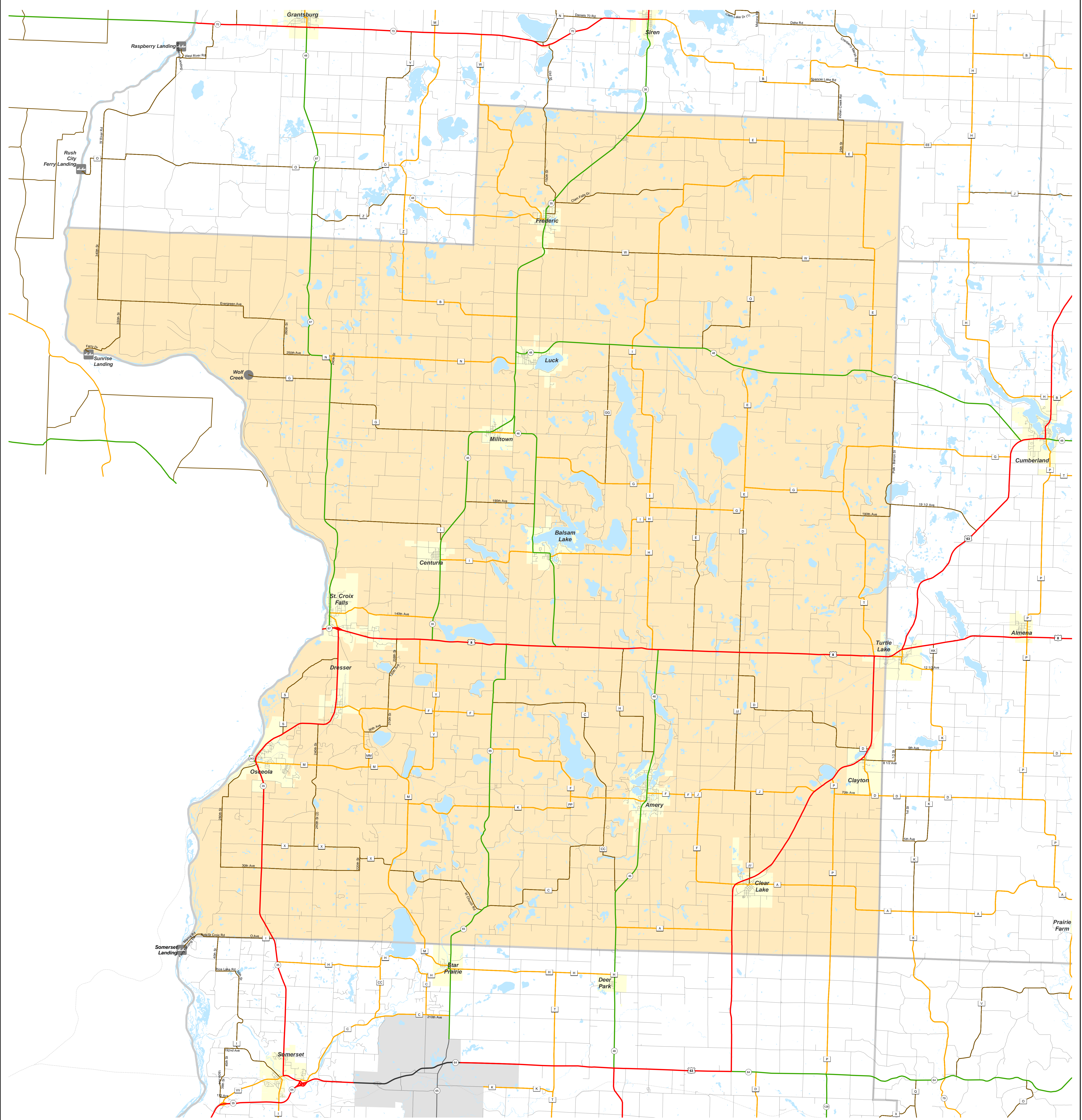


# POLK

## Functional Classification 08/14/2013

POLK



Legend	
<b>Existing</b>	<b>Planned</b>
<span style="color: red;">—</span> Principal Arterial	<span style="color: red;">- - - -</span> Principal Arterial
<span style="color: green;">—</span> Minor Arterial	<span style="color: green;">- - - -</span> Minor Arterial
<span style="color: orange;">—</span> Major Collector	<span style="color: orange;">- - - -</span> Major Collector
<span style="color: brown;">—</span> Minor Collector	<span style="color: brown;">- - - -</span> Minor Collector
<span style="color: grey;">—</span> Minor Collector classified using small community criteria and all Local	<span style="color: grey;">- - - -</span> Minor Collector classified using small community criteria and all Local
<span style="color: grey;">—</span> Railroads	<span style="color: grey;">- - - -</span> Railroads
<span style="background-color: lightblue; border: 1px solid black; display: inline-block; width: 10px; height: 10px;"></span> Lakes, Rivers, Streams	<span style="background-color: yellow; border: 1px solid black; display: inline-block; width: 10px; height: 10px;"></span> City or Village Limits
<span style="background-color: grey; border: 1px solid black; display: inline-block; width: 10px; height: 10px;"></span> Urbanized Area	

(In urban areas, only connecting links of rural routes are shown).

The information on these maps and produced from these maps was created for the official use of the Wisconsin Department of Transportation (WisDOT). Any other use, while not prohibited, is the sole responsibility of the user. WisDOT expressly disclaims all liability regarding fitness of use of the information for other than official WisDOT business.



# POLK

## Chart “C” Communities

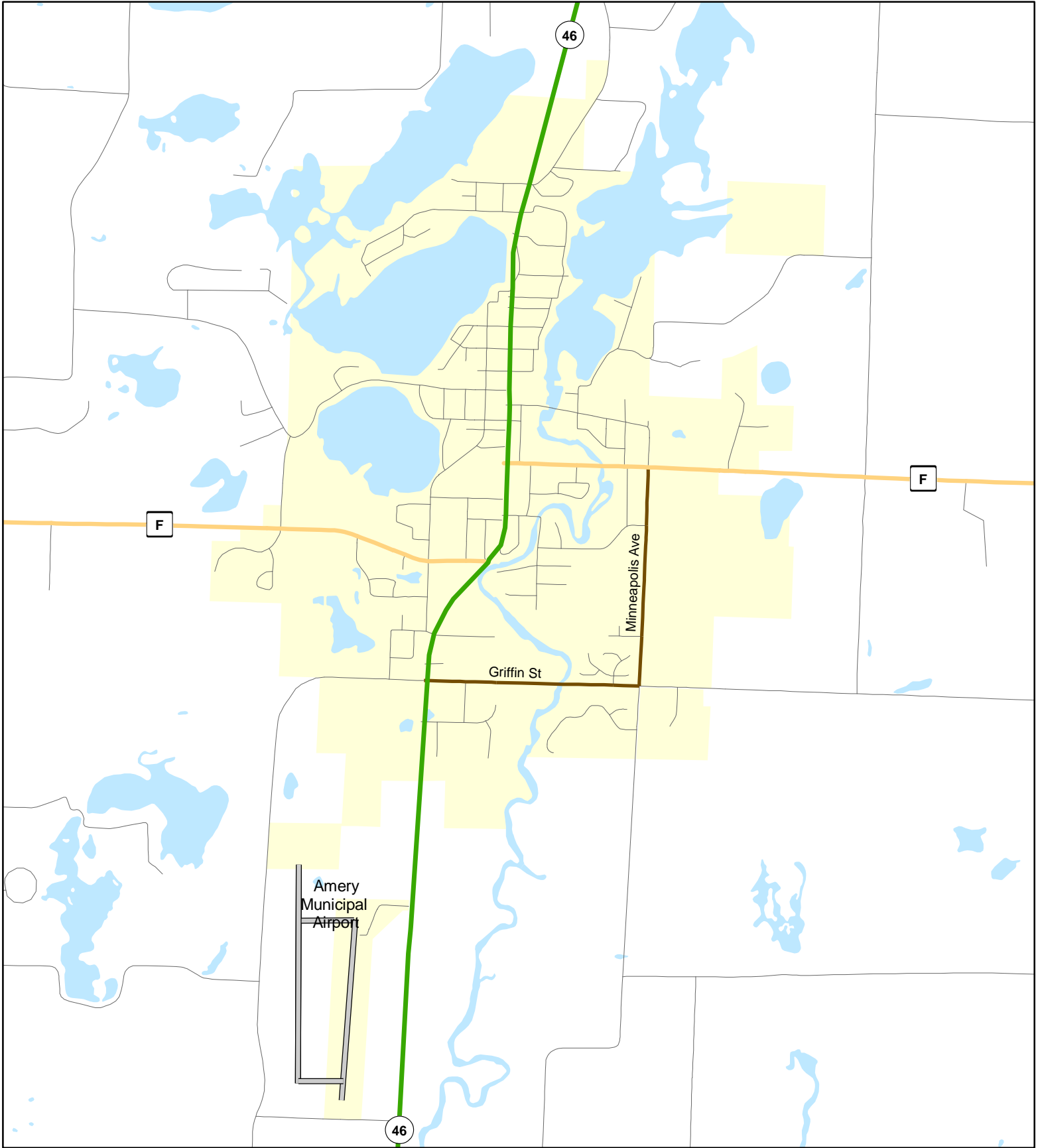
### Page

3	Amery
4	Centuria
5	Clear Lake
6	Dresser
7	Frederic
8	Luck
9	Milltown
10	Osceola
11	St. Croix Falls
12	Turtle Lake



**Chart C Community: AMERY**  
**County: Polk**

**Functional Classification**      **02/17/2009**



**Functional Classification**

- |                            |                        |                         |                         |                         |
|----------------------------|------------------------|-------------------------|-------------------------|-------------------------|
| Principal Arterial         | Minor Arterial         | Major Collector         | Minor Collector         | Chart C Minor Collector |
| planned Principal Arterial | planned Minor Arterial | planned Major Collector | planned Minor Collector |                         |

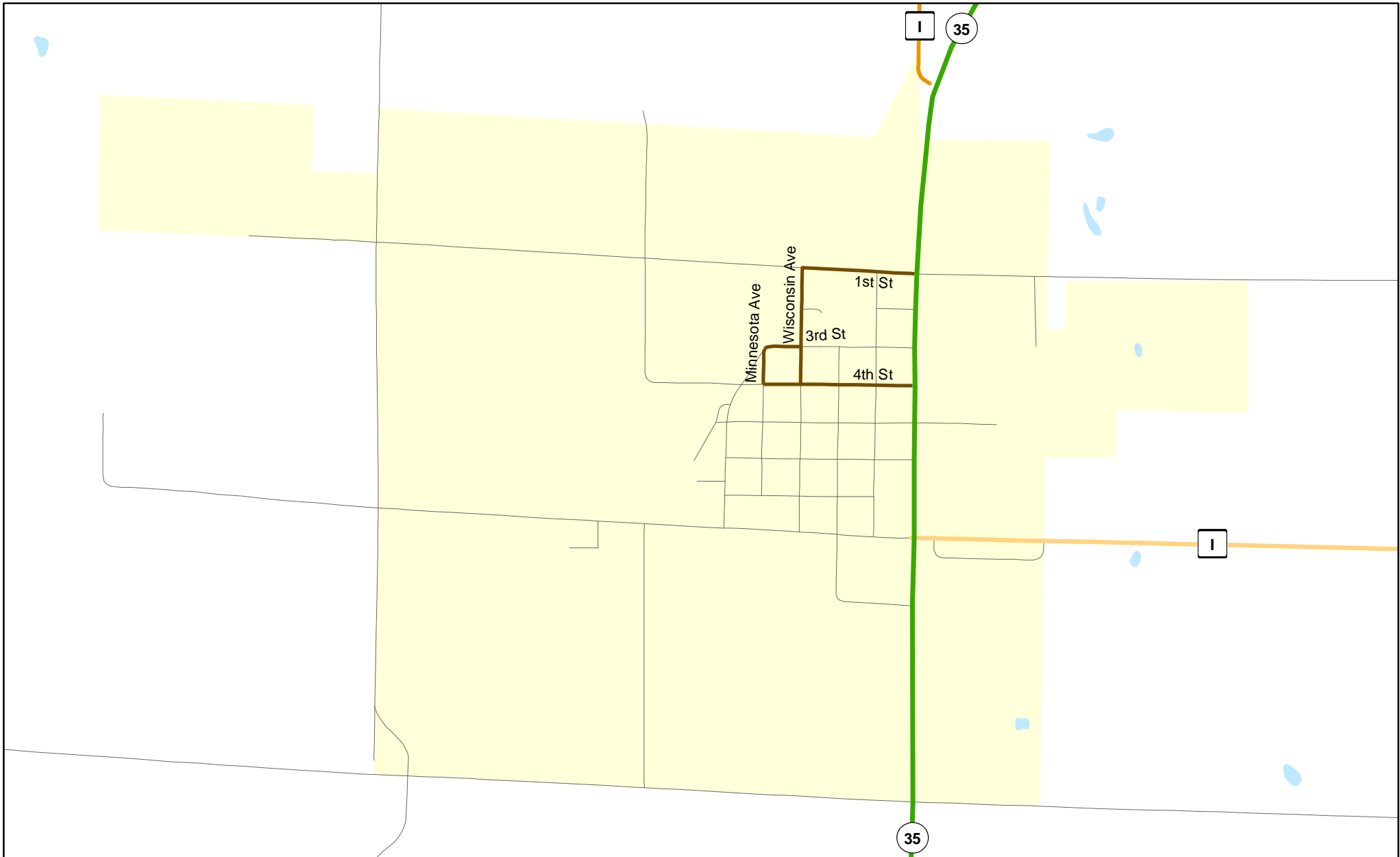
WisDOT Bureau of Planning and Economic Development  
FHWA approval: 02/17/2009  
PDF created: 06/29/2007

**Chart C Community: AMERY**  
**County: Polk**



**Chart C Community: CENTURIA**  
**County: Polk**

**Functional Classification**      **02/17/2009**



**Functional Classification**

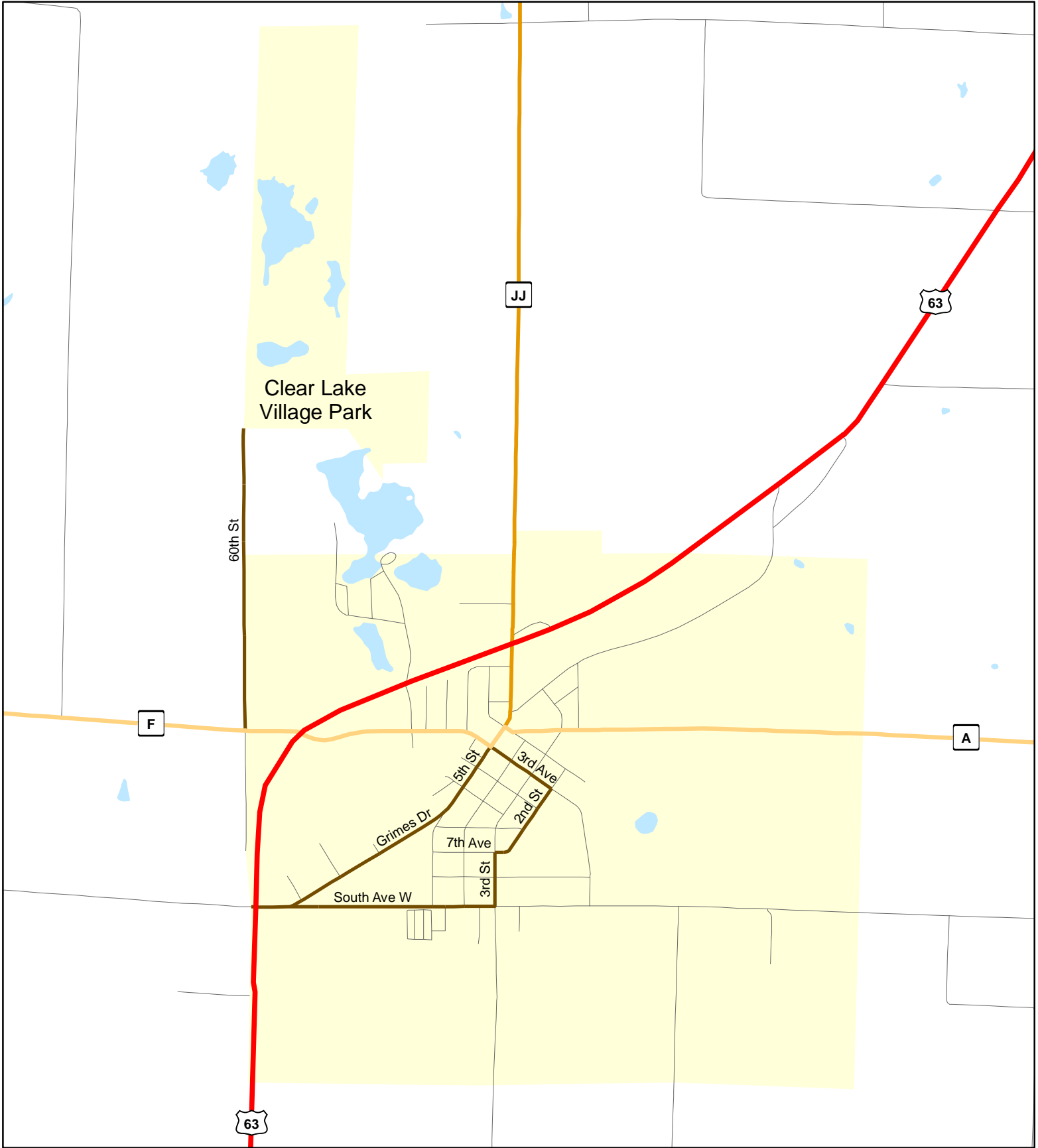
- Principal Arterial
- Minor Arterial
- Major Collector
- Minor Collector
- Chart C Minor Collector
- planned Principal Arterial
- planned Minor Arterial
- planned Major Collector
- planned Minor Collector

WisDOT Bureau of Planning and Economic Development  
FHWA approval: 02/17/2009  
PDF created: 06/29/2007

**Chart C Community: CENTURIA**  
**County: Polk**

**Chart C Community: CLEAR LAKE**  
**County: Polk**

**Functional Classification 02/17/2009**



**Functional Classification**

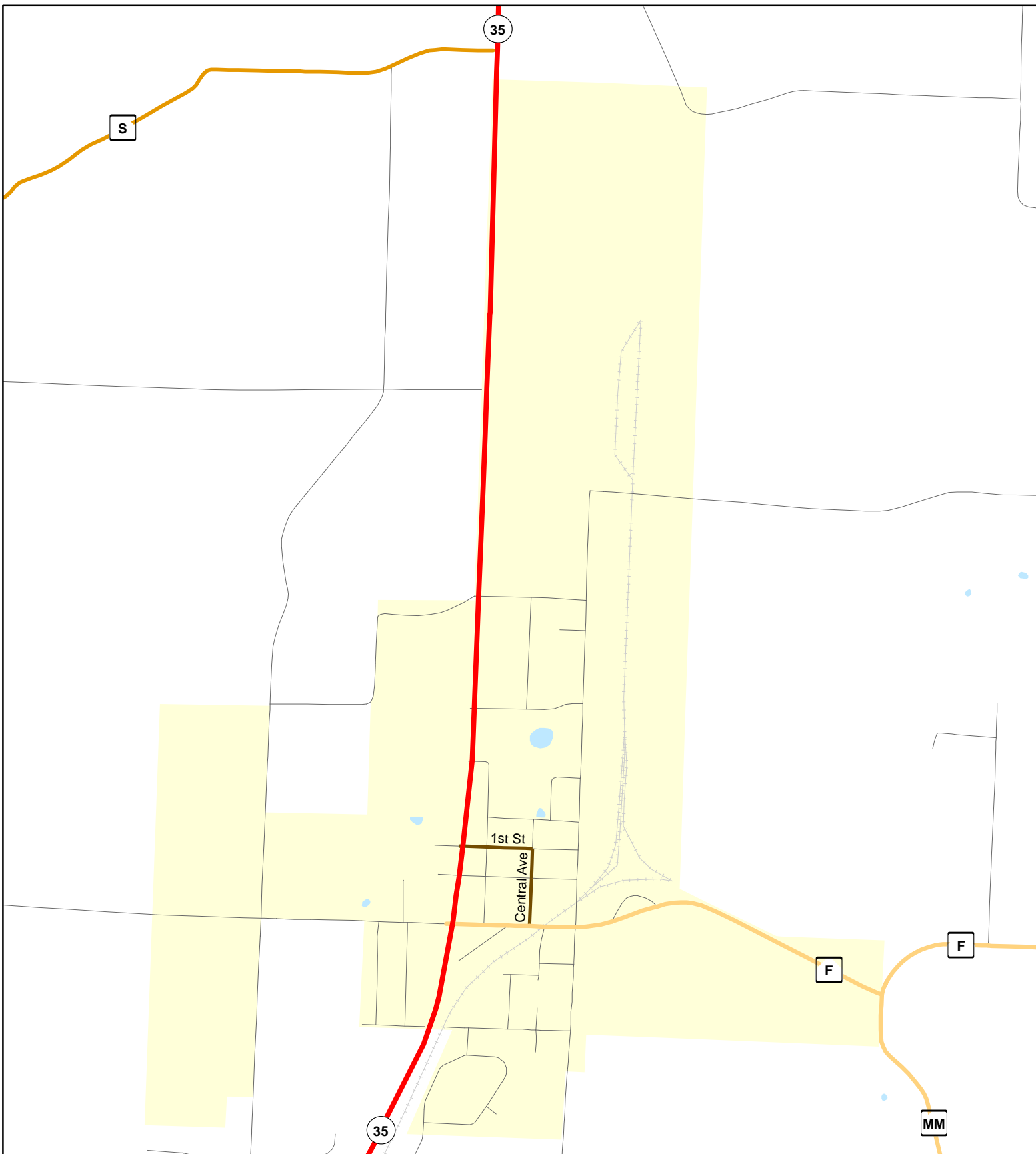
- Principal Arterial
- Minor Arterial
- Major Collector
- Minor Collector
- Chart C Minor Collector
- - planned Principal Arterial
- - planned Minor Arterial
- - planned Major Collector
- - planned Minor Collector

WisDOT Bureau of Planning and Economic Development  
 FHWA approval: 02/17/2009  
 PDF created: 06/29/2007

**Chart C Community: CLEAR LAKE**  
**County: Polk**

**Chart C Community: DRESSER  
County: Polk**

**Functional Classification      02/17/2009**



**Functional Classification**

- Principal Arterial      — Minor Arterial      — Major Collector      — Minor Collector      — Chart C Minor Collector
- - planned Principal Arterial      - - planned Minor Arterial      - - planned Major Collector      - - planned Minor Collector

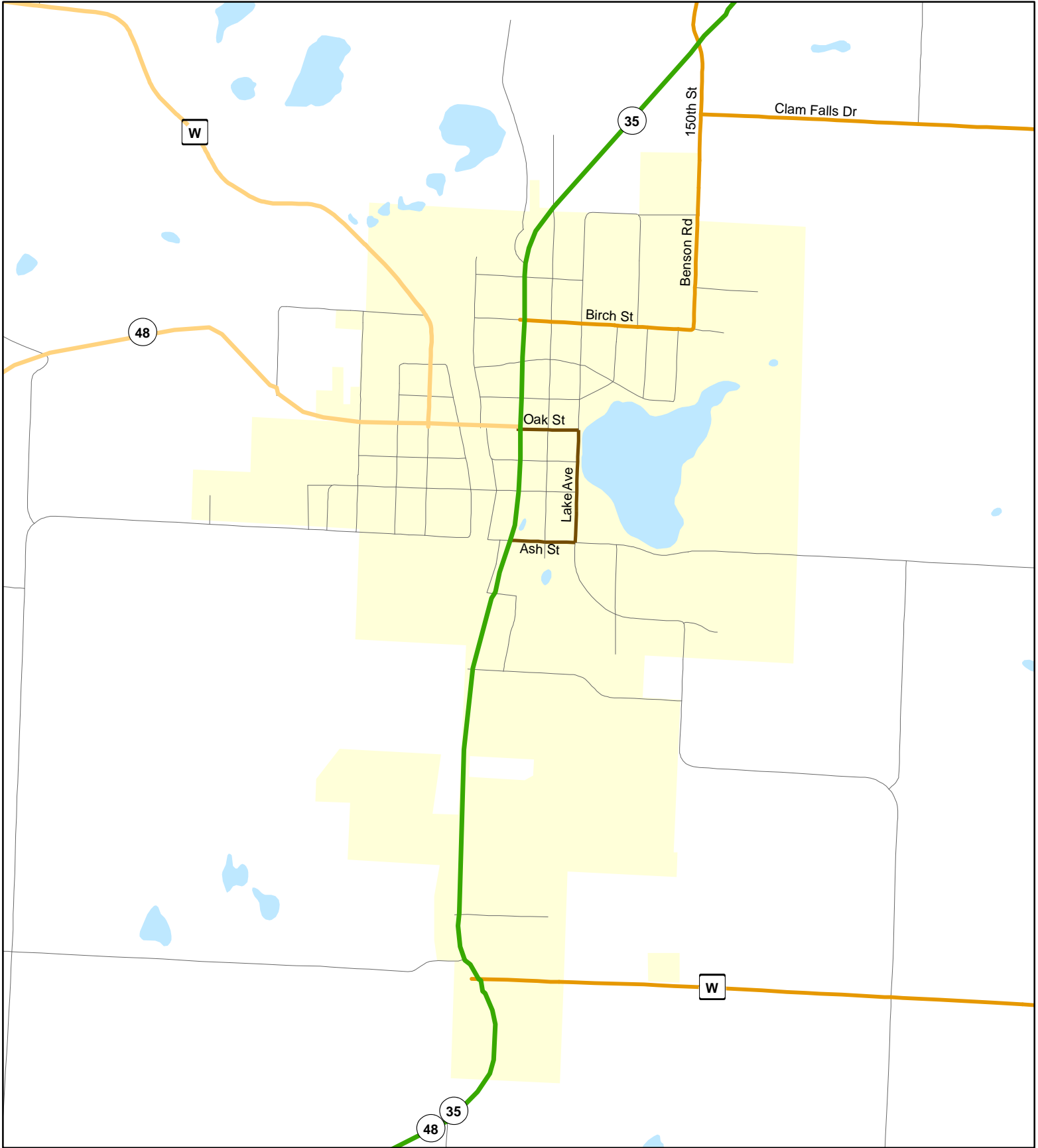
WisDOT Bureau of Planning and Economic Development  
FHWA approval: 02/17/2009  
PDF created: 06/29/2007

**Chart C Community: DRESSER  
County: Polk**



# Chart C Community: FREDERIC County: Polk

Functional Classification 02/17/2009



### Functional Classification

- Principal Arterial
- Minor Arterial
- Major Collector
- Minor Collector
- Chart C Minor Collector
- planned Principal Arterial
- planned Minor Arterial
- planned Major Collector
- planned Minor Collector

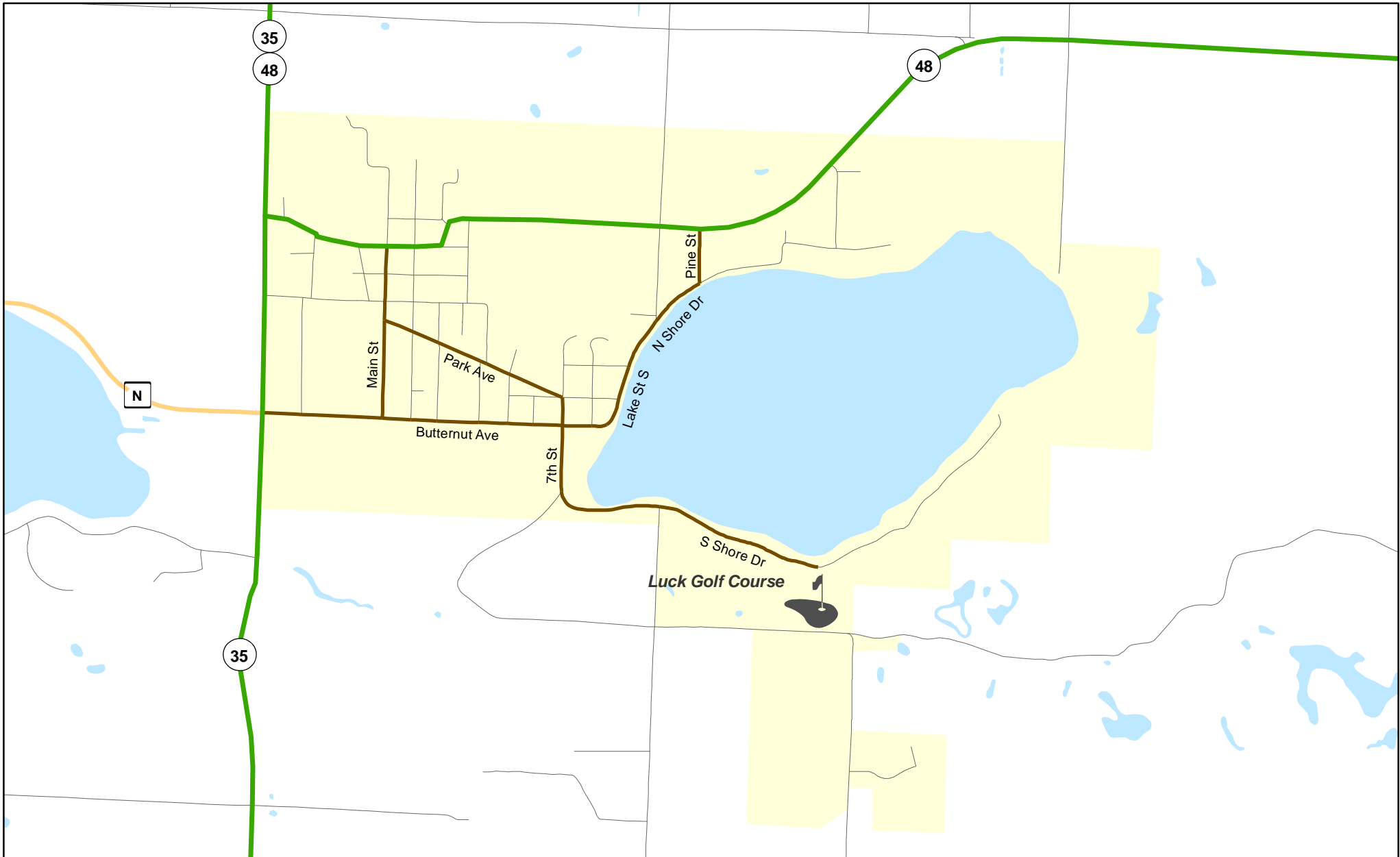
WisDOT Bureau of Planning and Economic Development  
FHWA approval: 02/17/2009  
PDF created: 06/29/2007

## Chart C Community: FREDERIC County: Polk



**Chart C Community: LUCK**  
**County: Polk**

**Functional Classification**      **02/17/2009**



**Functional Classification**

- Principal Arterial      — Minor Arterial      — Major Collector      — Minor Collector      — Chart C Minor Collector
- - - planned Principal Arterial      - - - planned Minor Arterial      - - - planned Major Collector      - - - planned Minor Collector

WisDOT Bureau of Planning and Economic Development  
FHWA approval: 02/17/2009  
PDF created: 06/29/2007

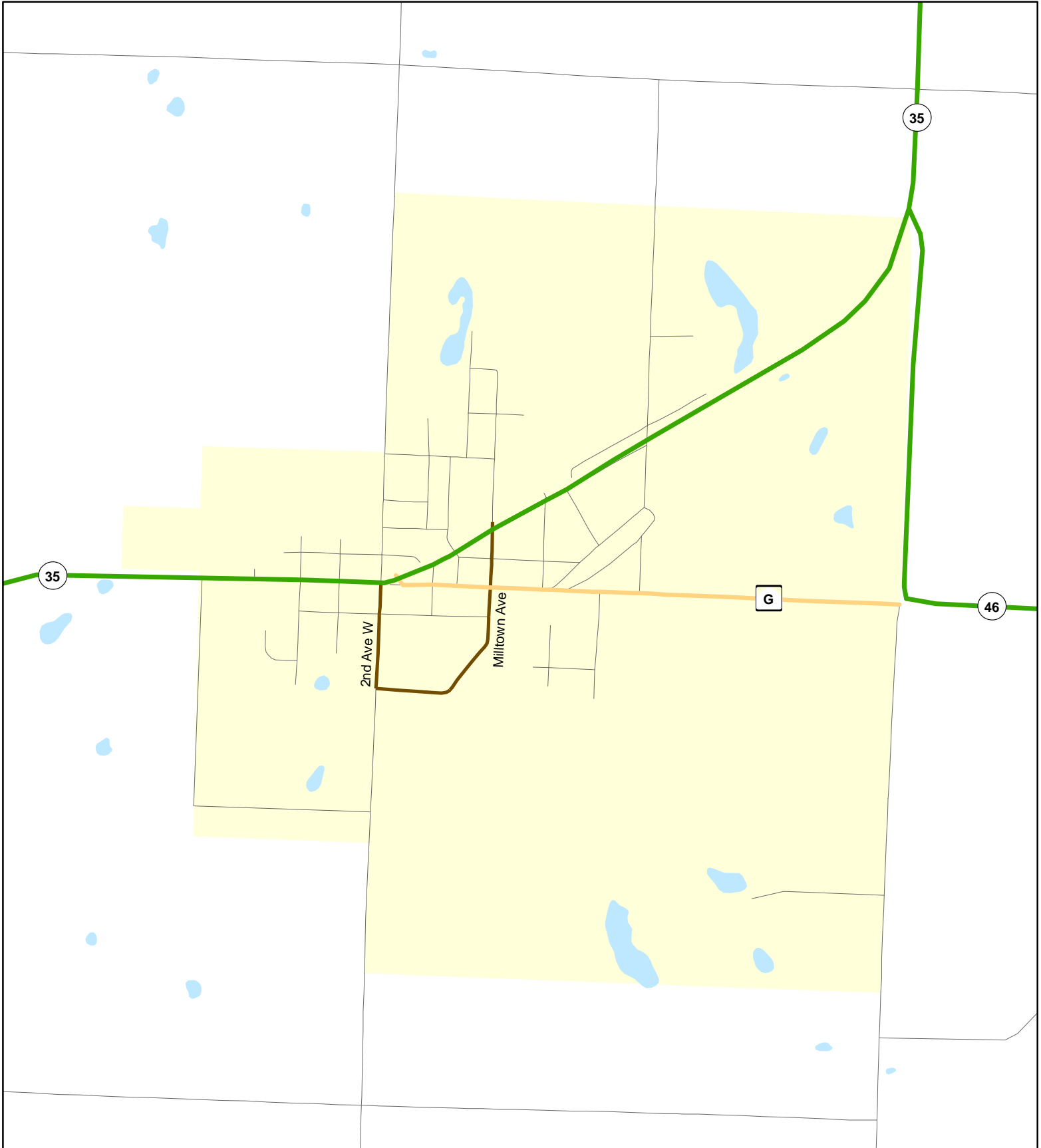
**Chart C Community: LUCK**  
**County: Polk**





**Chart C Community: MILLTOWN**  
**County: Polk**

**Functional Classification 02/17/2009**



**Functional Classification**

- |                            |                        |                         |                         |                         |
|----------------------------|------------------------|-------------------------|-------------------------|-------------------------|
| Principal Arterial         | Minor Arterial         | Major Collector         | Minor Collector         | Chart C Minor Collector |
| planned Principal Arterial | planned Minor Arterial | planned Major Collector | planned Minor Collector |                         |

WisDOT Bureau of Planning and Economic Development  
FHWA approval: 02/17/2009  
PDF created: 06/29/2007

**Chart C Community: MILLTOWN**  
**County: Polk**



**Chart C Community: OSCEOLA**  
**County: Polk**

**Functional Classification**      **02/17/2009**



**Functional Classification**

- Principal Arterial      — Minor Arterial      — Major Collector      — Minor Collector      — Chart C Minor Collector
- - - planned Principal Arterial      - - - planned Minor Arterial      - - - planned Major Collector      - - - planned Minor Collector

WisDOT Bureau of Planning and Economic Development  
FHWA approval: 02/17/2009  
PDF created: 06/29/2007

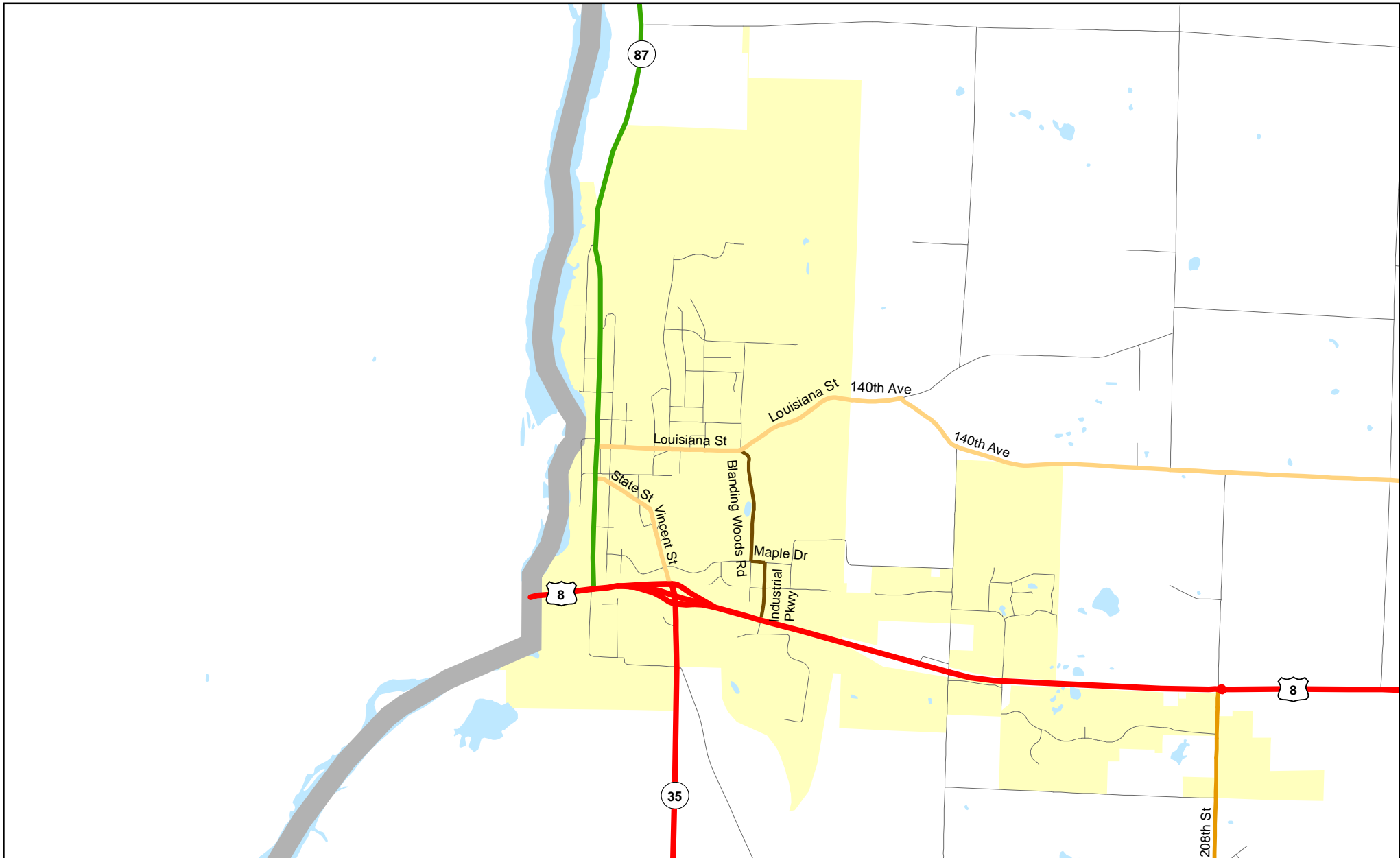
**Chart C Community: OSCEOLA**  
**County: Polk**



# Chart C Community: ST. CROIX FALLS

County: Polk

Functional Classification 08/14/2013



## Functional Classification

- Principal Arterial
- Minor Arterial
- Major Collector
- Minor Collector
- Chart C Minor Collector
- planned Principal Arterial
- planned Minor Arterial
- planned Major Collector
- planned Minor Collector

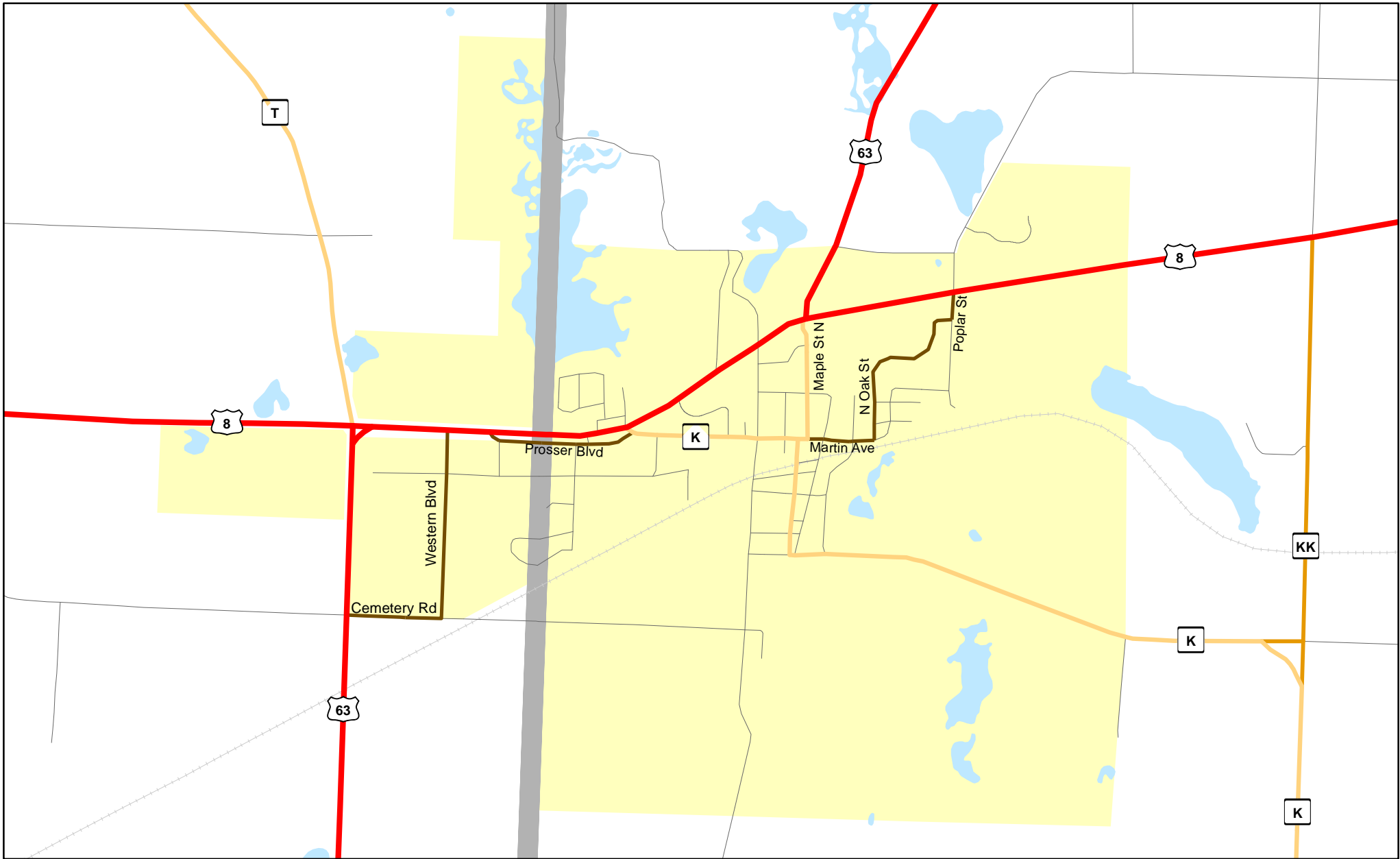
WisDOT Bureau of Planning and Economic Development  
FHWA approval: 08/14/2013  
PDF created: 08/05/2013

**Chart C Community: ST. CROIX FALLS**  
**County: Polk**



**Chart C Community: TURTLE LAKE**  
**County: Barron / Polk**

**Functional Classification**      **08/14/2013**



**Functional Classification**

- |                            |                        |                         |                         |                         |
|----------------------------|------------------------|-------------------------|-------------------------|-------------------------|
| Principal Arterial         | Minor Arterial         | Major Collector         | Minor Collector         | Chart C Minor Collector |
| planned Principal Arterial | planned Minor Arterial | planned Major Collector | planned Minor Collector |                         |

WisDOT Bureau of Planning and Economic Development  
FHWA approval: 08/14/2013  
PDF created: 08/05/2013

**Chart C Community: TURTLE LAKE**  
**County: Barron / Polk**